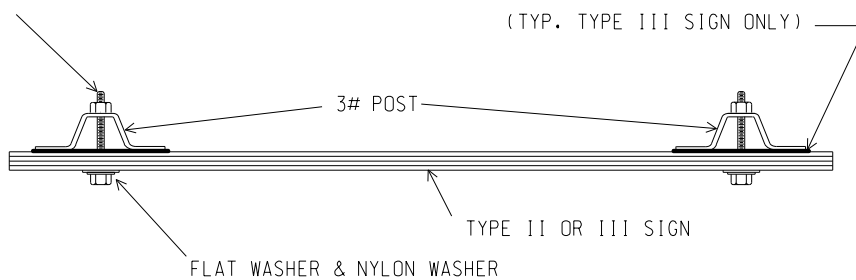


TYPICAL ROUTE MARKER ASSEMBLIES

5/16" DIAMETER STAINLESS STEEL BOLT
AND NYLON INSERT LOCK NUT

SELF-ALIGNING STEEL REINFORCING PLATE
(TYP. TYPE III SIGN ONLY)



SIGN TO POST



PREPARED
BY
DESIGN DIVISION

DRAWN BY: DHD

CHECKED BY: AJU

DEPARTMENT DIRECTOR
Kirk T. Steudle

APPROVED BY: *Randy U. Puffel*
DIRECTOR, BUREAU OF FIELD SERVICES

APPROVED BY: *Mark A. Van Pelt*
DIRECTOR, BUREAU OF HIGHWAY DEVELOPMENT

MICHIGAN DEPARTMENT OF TRANSPORTATION
BUREAU OF HIGHWAY DEVELOPMENT STANDARD PLAN FOR

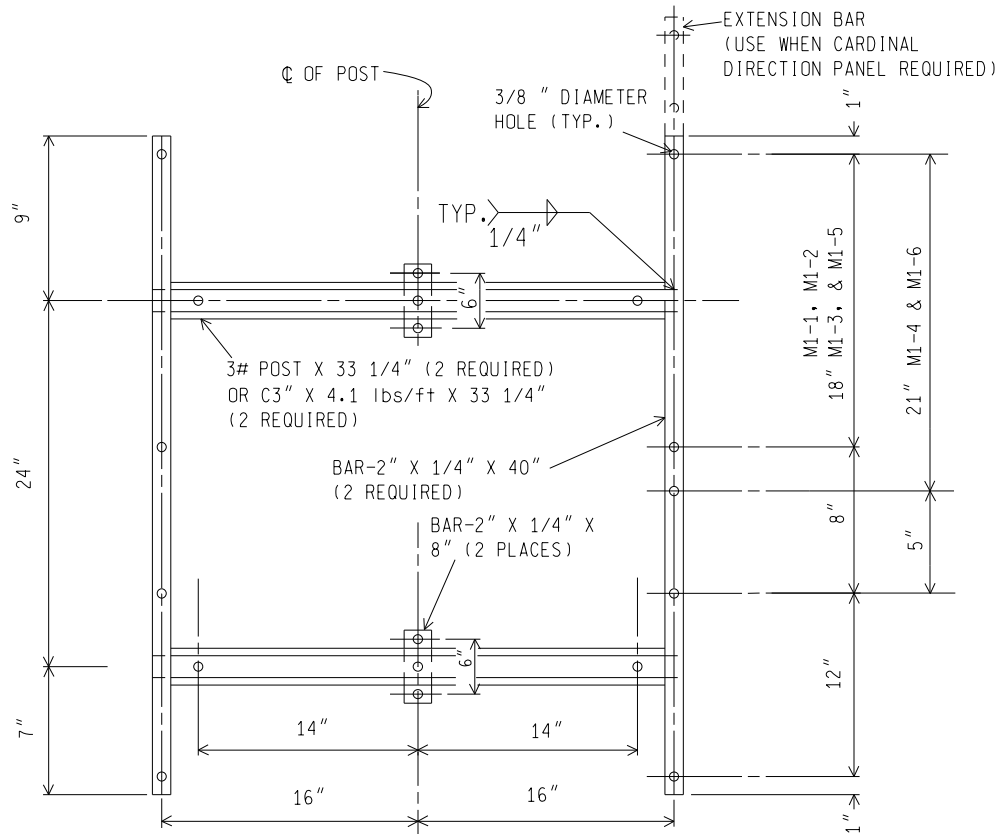
MISCELLANEOUS SIGN
CONNECTION DETAILS

07/03/2013
F.H.W.A. APPROVAL

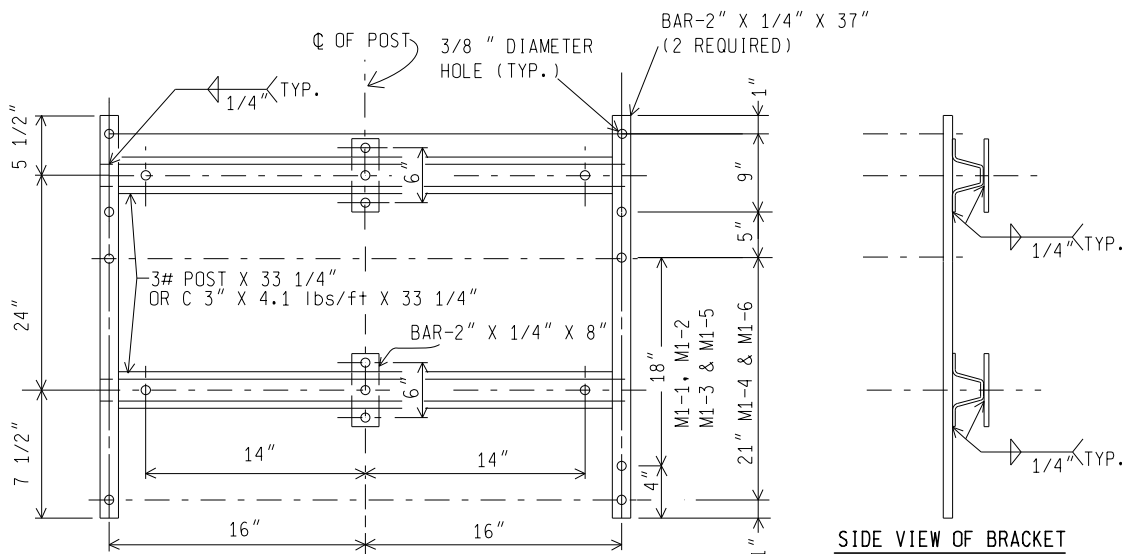
06/20/2013
PLAN DATE

SIGN-740-B

SHEET
1 OF 5



BRACKET



BRACKET

SIDE VIEW OF BRACKET

(USED WITH 2-ROUTE MARKERS & 2-CARDINAL DIRECTION PANELS)

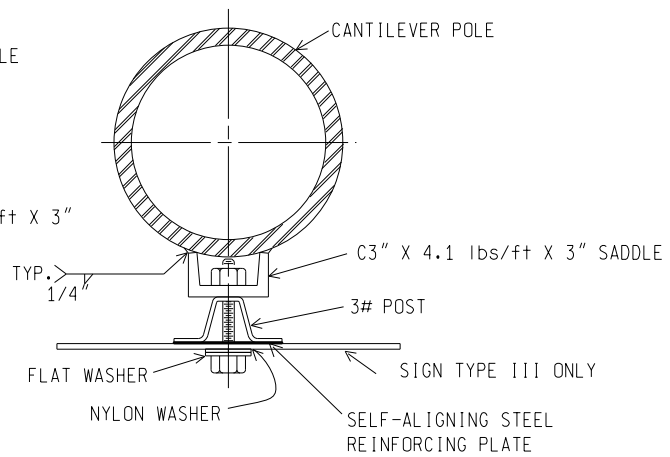
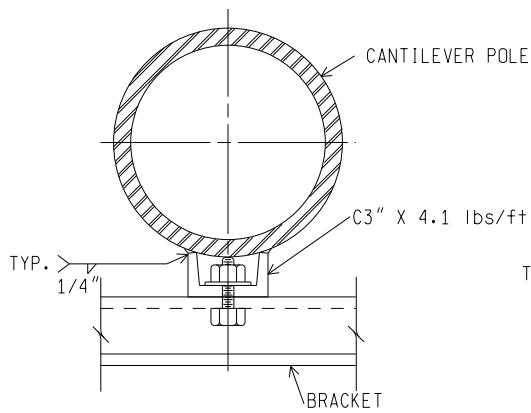
NOTES:

1. ALL CONNECTIONS ARE INCIDENTAL TO PAY ITEM "SIGN, TYPE _".
2. ALL STEEL PARTS SHALL CONFORM TO MDOT STANDARD SPECIFICATIONS FOR CONSTRUCTION.
3. FOR SIGN CONNECTIONS TO WOOD SUPPORTS SEE SIGN-210-SERIES.
4. USE BAR FOR BRACKET WHEN "BANDING CONNECTION TO POLE" IS USED.

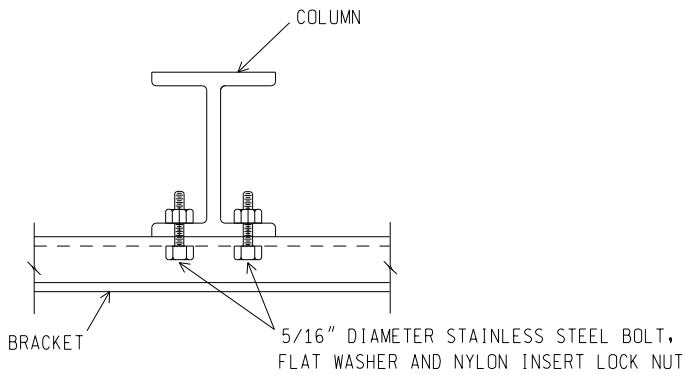
NOT TO SCALE

MICHIGAN DEPARTMENT OF TRANSPORTATION BUREAU OF HIGHWAY DEVELOPMENT STANDARD PLAN	07/03/2013 F.H.W.A. APPROVAL	06/20/2013 PLAN DATE	SIGN-740-B	SHEET 2 OF 5
--	---------------------------------	-------------------------	-------------------	-----------------

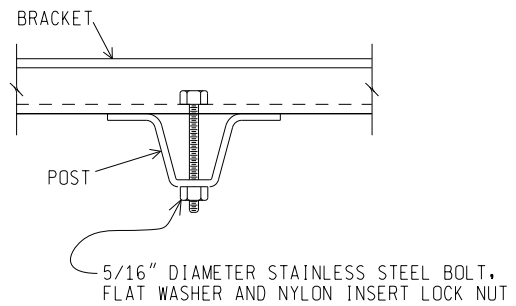
NOTE: THE ORIGINAL SIGNED COPY IS KEPT ON FILE AT THE MICHIGAN DEPARTMENT OF TRANSPORTATION.



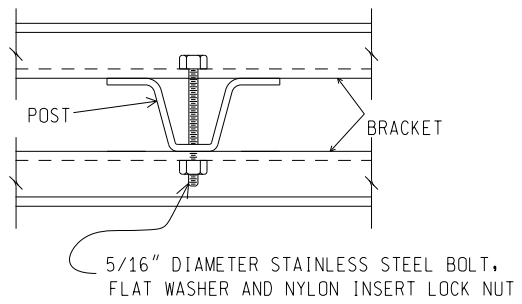
BRACKET OR SIGN TO CANTILEVER POLE



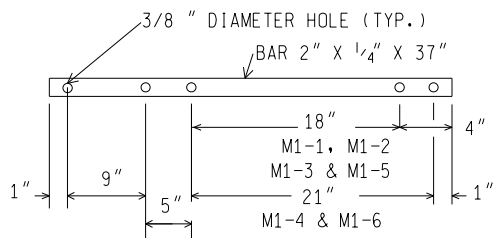
BRACKET TO COLUMN



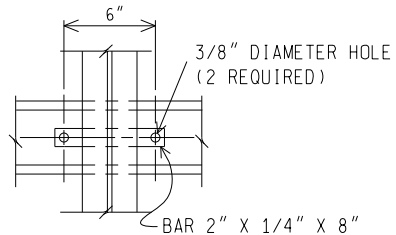
BRACKET TO POST



BRACKET TO POST



EXTENSION BAR



DETAIL I (TYP.) COUPLING BAR

NOT TO SCALE

MICHIGAN DEPARTMENT OF TRANSPORTATION
BUREAU OF HIGHWAY DEVELOPMENT STANDARD PLAN

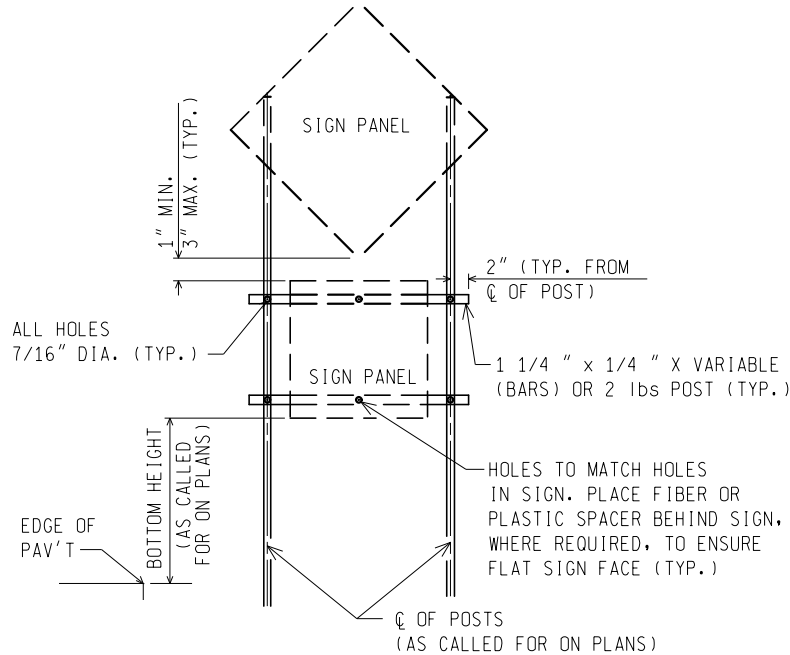
07/03/2013
F.H.W.A. APPROVAL

06/20/2013
PLAN DATE

SIGN-740-B

SHEET
3 OF 5

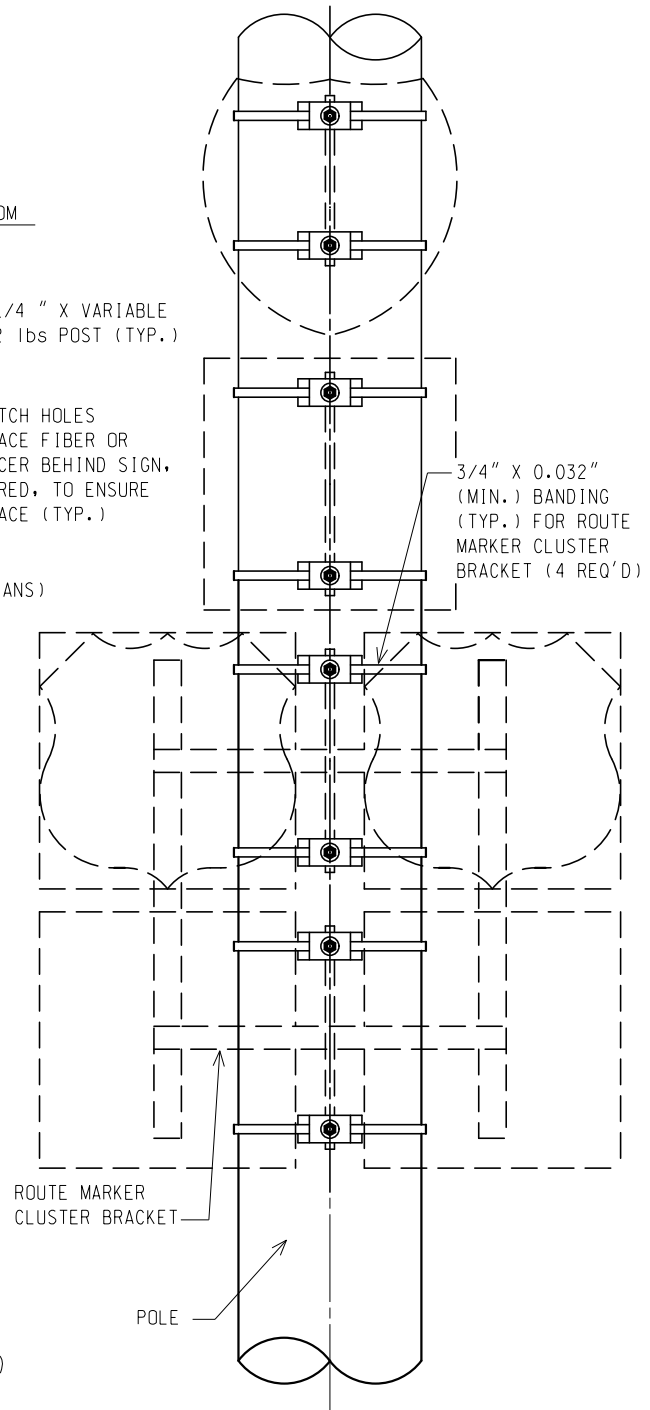
NOTE: THE ORIGINAL SIGNED COPY IS KEPT ON FILE AT THE MICHIGAN DEPARTMENT OF TRANSPORTATION.



MULTIPLE SIGN PANEL
INSTALLATION

NOTES:

1. ALL HORIZONTAL MEMBERS ARE TO BE CONNECTED TO THE SIDE OF THE POST FACING TRAFFIC.
2. FOR INSTALLATIONS WHERE THE HORIZONTAL DIMENSION OF THE PANEL(S) IS EQUAL TO OR LESS THAN THE DISTANCE BETWEEN SUPPORTS, USE HORIZONTAL MEMBERS AS IN NOTE 1.
3. WHERE A PANEL(S) HAS A HORIZONTAL DIMENSION 4" GREATER THAN THE CENTERLINE DISTANCE BETWEEN SUPPORTS, THE PANEL(S) IS TO BE FIELD DRILLED AND ATTACHED DIRECTLY TO THE SUPPORTS.
4. THIS ITEM IS PAID PER EACH BAND.



BANDING CONNECTION TO POLE

NOT TO SCALE

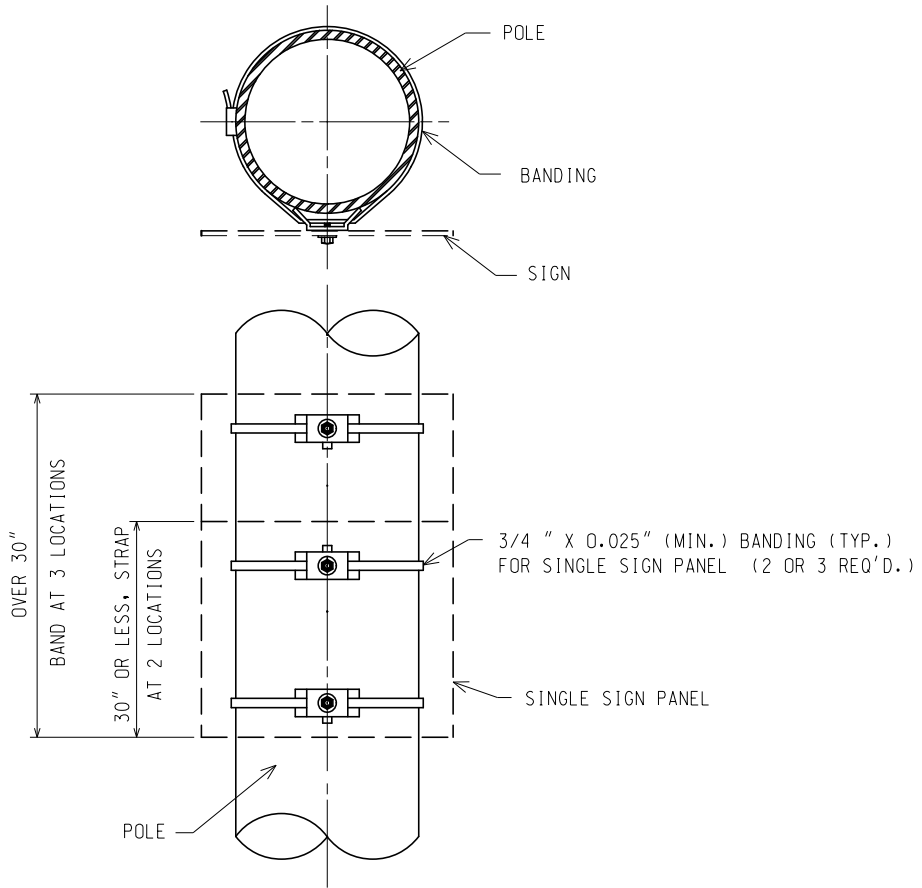
MICHIGAN DEPARTMENT OF TRANSPORTATION
BUREAU OF HIGHWAY DEVELOPMENT STANDARD PLAN

07/03/2013
F.H.W.A. APPROVAL

06/20/2013
PLAN DATE

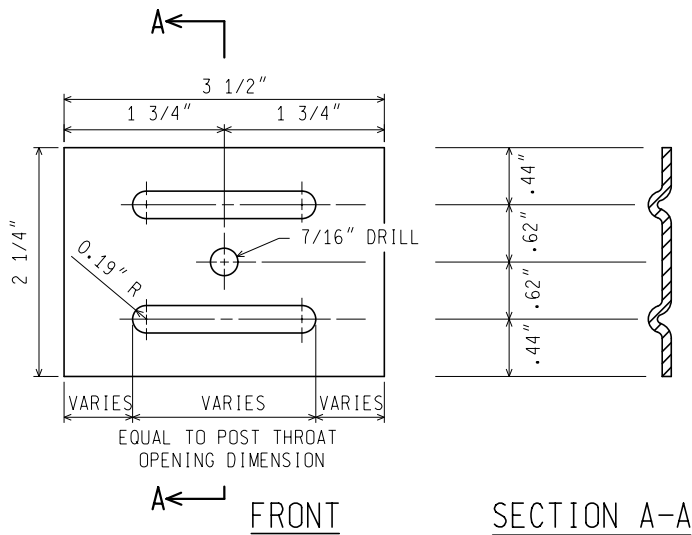
SIGN-740-B

SHEET
4 OF 5



BANDING CONNECTION TO POLE

NOTE: BANDING, BRACKETS, SEALS, NUTS, BOLTS, AND WASHERS SHALL BE STAINLESS STEEL, PER MDT STANDARD SPECIFICATIONS FOR CONSTRUCTION.



NOTES FOR STEEL SIGN REINFORCING PLATE:

1. MATERIAL: 12 GAUGE CARBON STEEL.
2. TOLERANCE ON ALL DIMENSIONS $\pm 0.0625''$
3. FINISH—AFTER STAMPING AND PUNCHING, GALVANIZE ACCORDING TO CURRENT SPECIFICATIONS FOR ZINC (HOT GALVANIZE) COATINGS ON PRODUCTS FABRICATED FROM PLATES OR STRIPS

STEEL SIGN REINFORCING PLATE

NOT TO SCALE

MICHIGAN DEPARTMENT OF TRANSPORTATION BUREAU OF HIGHWAY DEVELOPMENT STANDARD PLAN	07/03/2013 F.H.W.A. APPROVAL	06/20/2013 PLAN DATE	SIGN-740-B	SHEET 5 OF 5
--	---------------------------------	-------------------------	------------	-----------------

NOTE: THE ORIGINAL SIGNED COPY IS KEPT ON FILE AT THE MICHIGAN DEPARTMENT OF TRANSPORTATION.