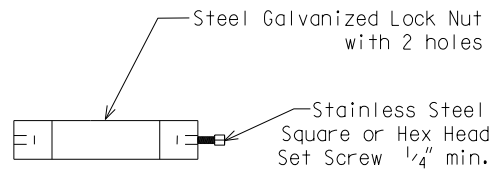
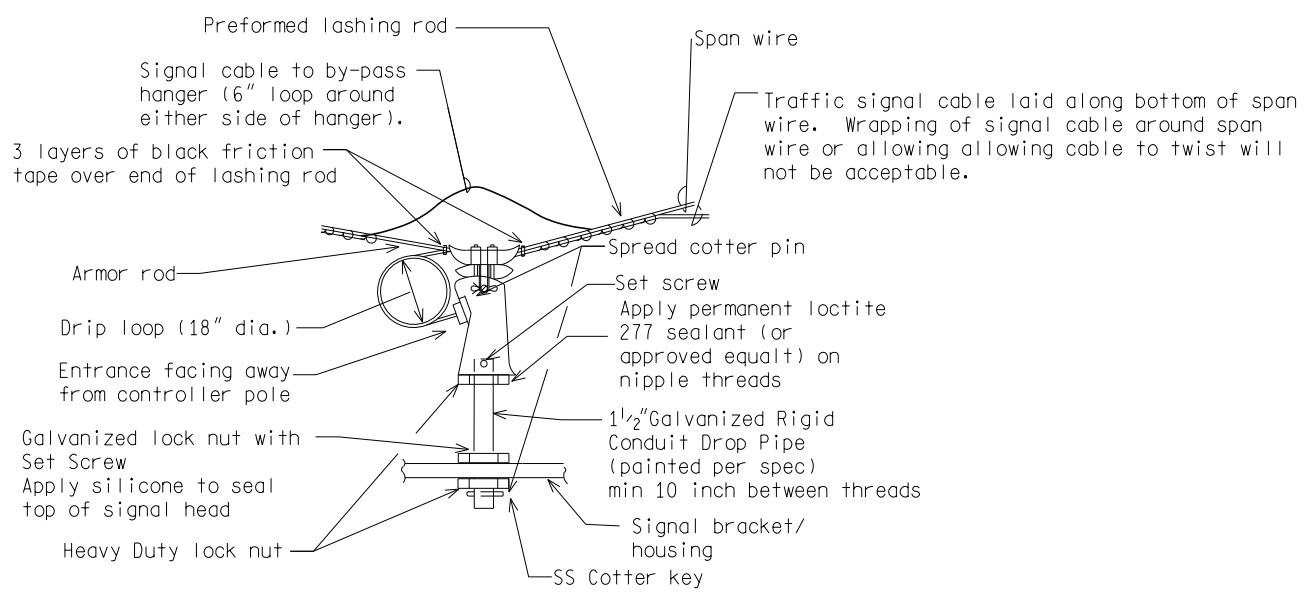


(\* NOTE:  
Cotter key required as shown.

ONE-WAY TRAFFIC SIGNAL HEAD



OH SIGNAL LOCK NUT DETAIL



HANGER ATTACHMENT

NOT TO SCALE

File: RefDoc/TR/Signals/Web/Sp Det/Fin/SIG300A.dgn Rev. 11/13/20



PREPARED BY  
TRAFFIC AND SAFETY

DRAWN BY: DJF

CHECKED BY:

\_\_\_\_\_  
ENGINEER OF DELIVERY

\_\_\_\_\_  
ENGINEER OF DEVELOPMENT

(SPECIAL DETAIL)

FHWA APPROVAL DATE

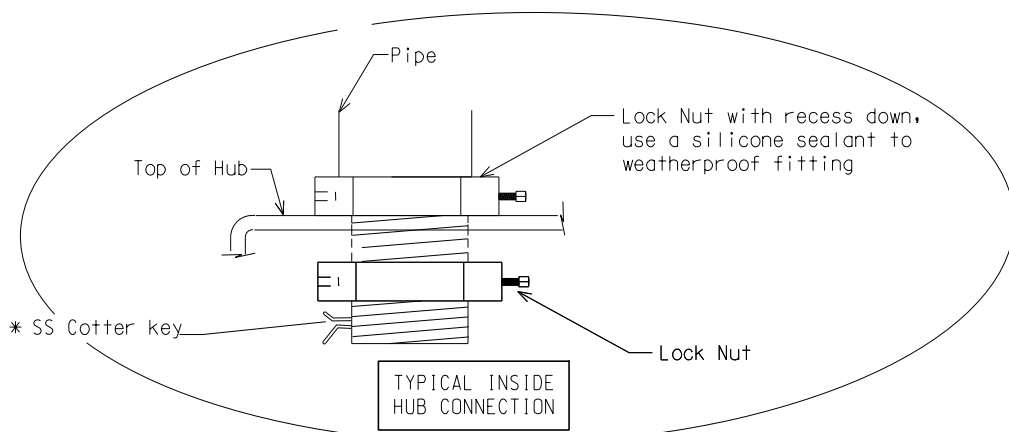
MICHIGAN DEPARTMENT OF TRANSPORTATION  
BUREAU OF HIGHWAYS DELIVERY STANDARD PLAN FOR

**SPAN WIRE MOUNTED  
T.S. BRACKET ASSEMBLY**

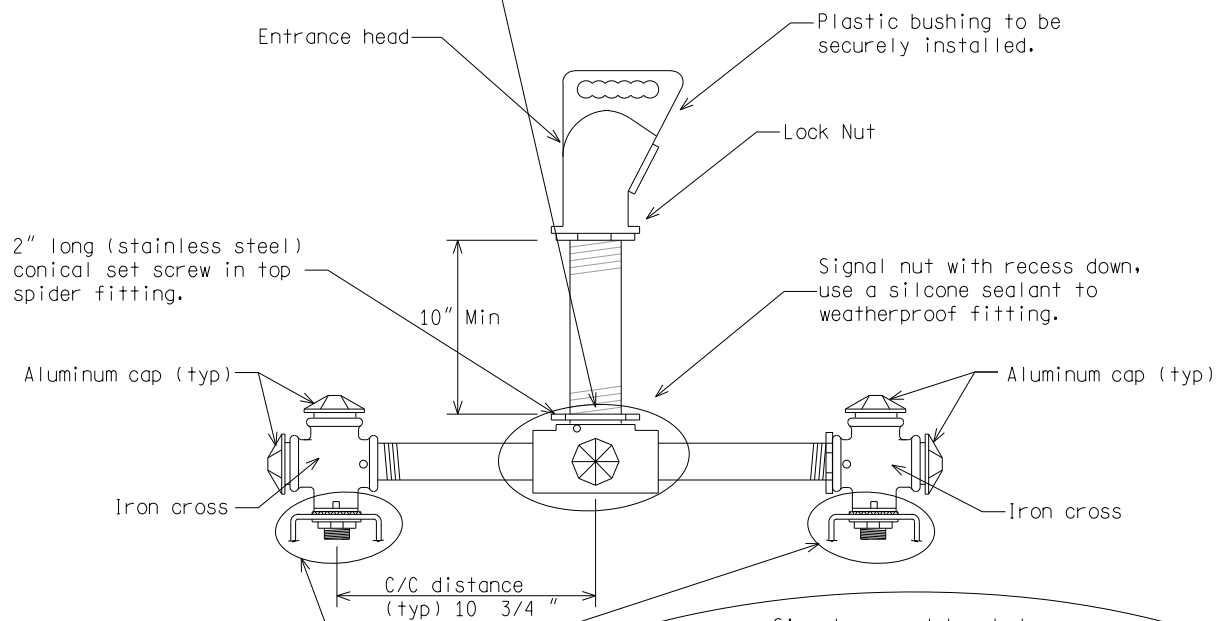
\_\_\_\_\_  
PLAN DATE

**SIG-300-A**

SHEET  
1 of 3

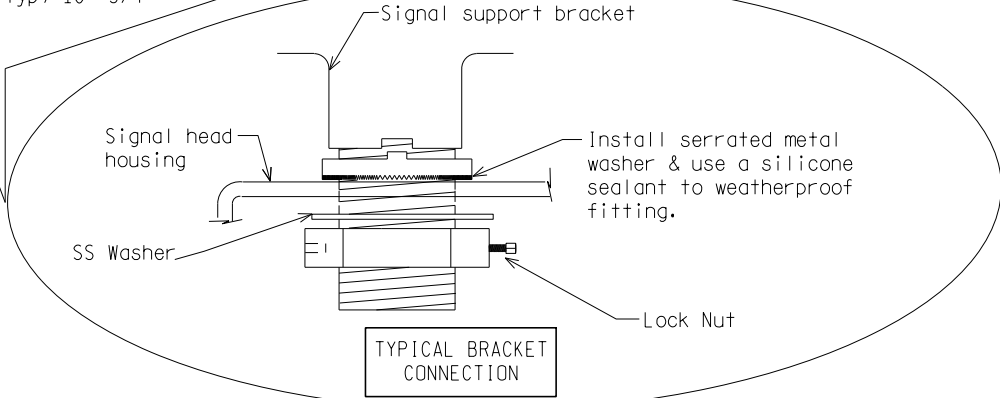


TYPICAL INSIDE HUB CONNECTION



2" long (stainless steel) conical set screw in top spider fitting.

NOTE:  
2-way T.S. shown  
3-way T.S. & 4-way similar



TYPICAL BRACKET CONNECTION

### MULTIPLE-WAY TRAFFIC SIGNAL HEAD(S)

- NOTE:
- 1) Exterior surface of all mounting assemble located below span clamps, including stems, lock nuts, and related hardware must match the current FHWA Highway yellow color tolerance chart per the Standard Specifications for Construction.
  - 2) Tolerance within  $\pm 1/8"$  for all bracketing.

NOT TO SCALE

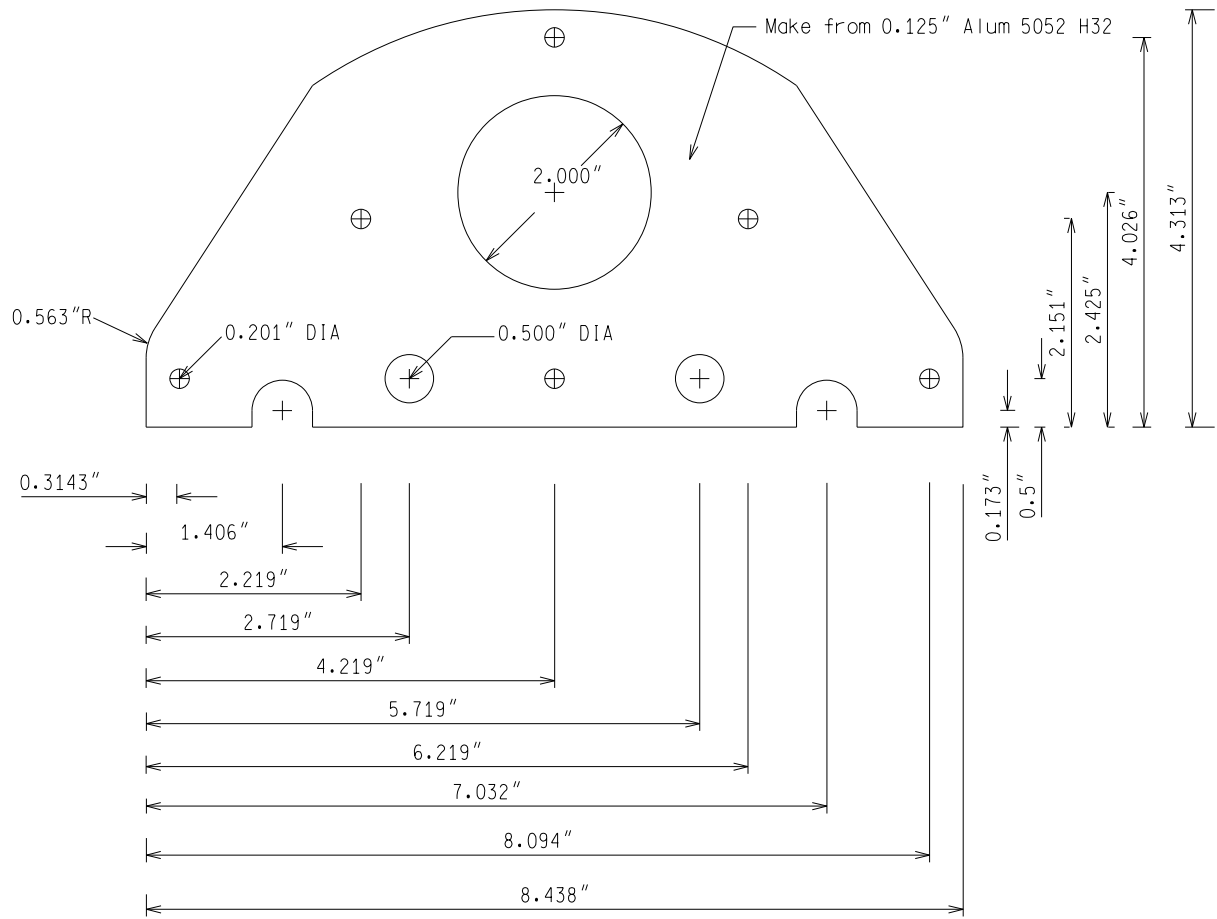
MICHIGAN DEPARTMENT OF TRANSPORTATION  
BUREAU OF HIGHWAYS DELIVERY STANDARD PLAN

(SPECIAL DETAIL)  
FHWA APPROVAL DATE

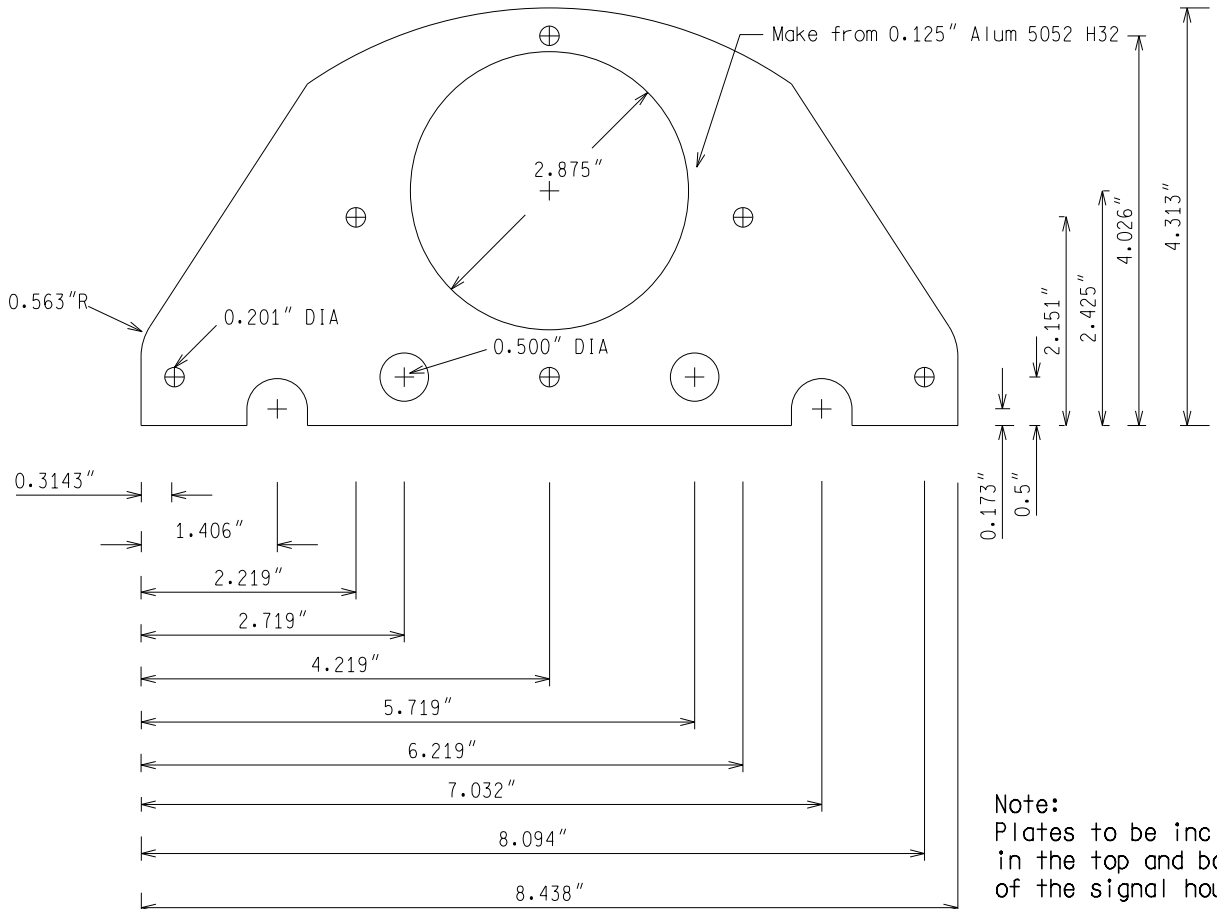
PLAN DATE

SIG-300-A

SHEET  
2 of 3



INSIDE SIGNAL HOUSING



OUTSIDE SIGNAL HOUSING

Note:  
Plates to be included  
in the top and bottom  
of the signal housing.

NOT TO SCALE

MICHIGAN DEPARTMENT OF TRANSPORTATION BUREAU OF HIGHWAYS DELIVERY STANDARD PLAN	(SPECIAL DETAIL) FHWA APPROVAL DATE	PLAN DATE	SIG-300-A	SHEET 3 of 3
File: RefDoc/TR/Signals/Web/Sp Det/Fin/SIG300A.dgn Rev. 11/13/20				