

END ROAD WORK

PLACE THIS SIGN ALONG WITH THE ADVANCE WORK ZONE SIGNING AS DEPICTED ON THE APPROPRIATE TYPICAL M0030a-M0080a.

SPEED LIMIT XX
R2-1
LEGEND REFLECTS SPEED LIMIT BEYOND WORK AREA.

END ROAD WORK

PLACE THIS SIGN ALONG WITH THE ADVANCE WORK ZONE SIGNING AS DEPICTED ON THE APPROPRIATE TYPICAL M0030a-M0080a.

SPEED LIMIT XX
R2-1
LEGEND REFLECTS SPEED LIMIT BEYOND WORK AREA.

SPEED LIMIT XX
R2-1

WHERE WORKERS PRESENT 45
R2-1a

PLACE ADDITIONAL SUPPLEMENTAL SETS OF SPEED LIMIT SIGNS THROUGHOUT THE WORK AREA AS DEPICTED ON TYPICAL M0100a.

WHERE WORKERS PRESENT 45
R2-1a

WORK ZONE BEGINS R5-18c

SPEED LIMIT XX R2-1

DO NOT PASS R4-1

DO NOT PASS R4-1

DO NOT PASS R4-1

DO NOT PASS R4-1

DO NOT PASS R4-1

DO NOT PASS R4-1

DO NOT PASS R4-1

WORK ZONE BEGINS R5-18c

SPEED LIMIT XX R2-1

DO NOT PASS R4-1

DO NOT PASS R4-1

DO NOT PASS R4-1

DO NOT PASS R4-1

DO NOT PASS R4-1

DO NOT PASS R4-1

- KEY**
- CHANNELIZING DEVICES
 - ← LIGHTED ARROW PANEL
 - ⊕ STROBE LIGHT
 - ⇒ TRAFFIC FLOW
 - ▲ SEE SHEET 3 OF 3

SIGN = 622 ft±2 - TYPE B PLUS ADDITIONAL SPEED LIMIT SIGNING THROUGHOUT WORK AREA

A MATCH A

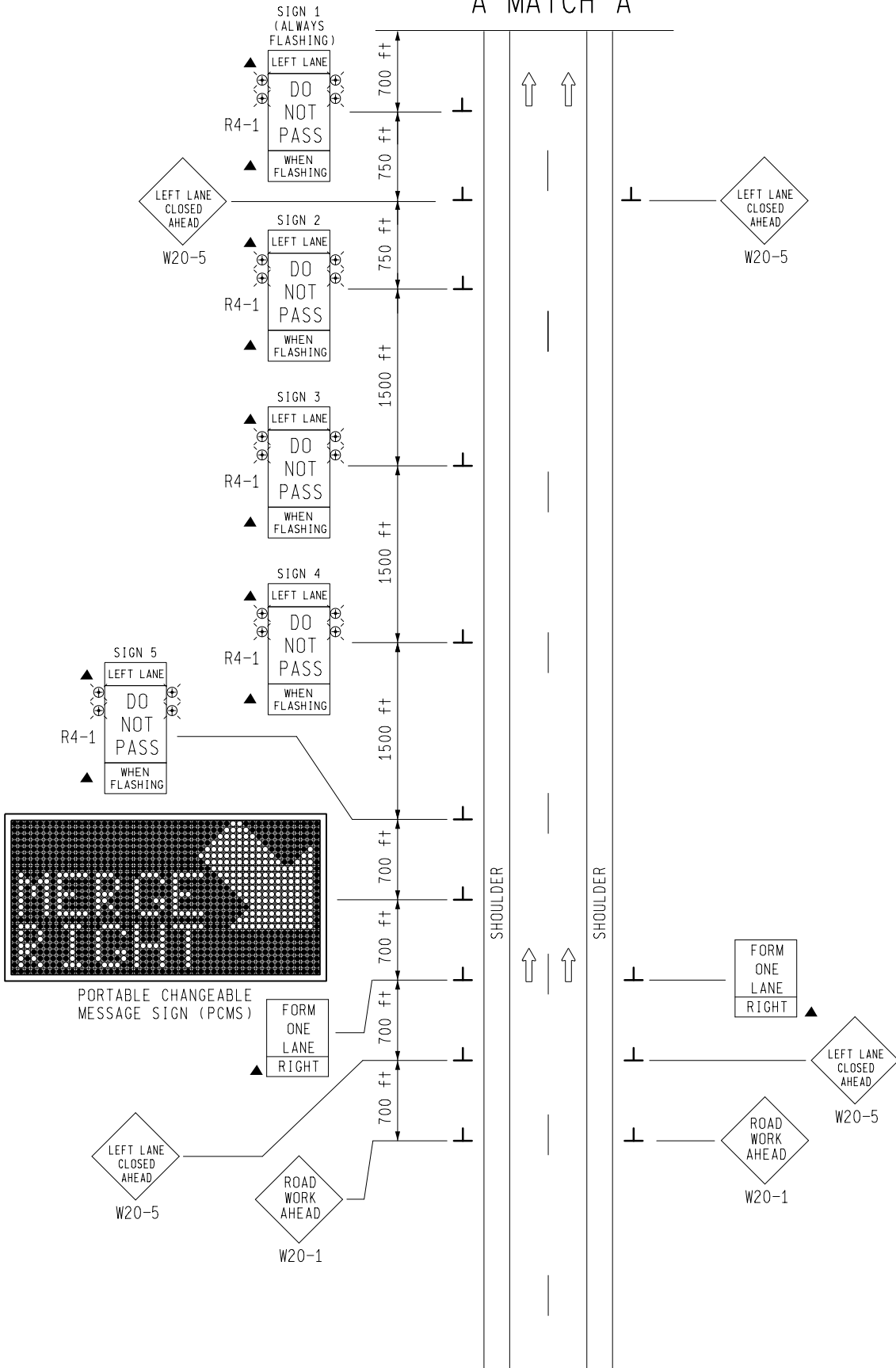
MDOT
Michigan Department of Transportation
TRAFFIC AND SAFETY
MAINTAINING TRAFFIC
TYPICAL

TYPICAL TEMPORARY TRAFFIC CONTROL FOR A ONE-LANE CLOSURE ON A TWO-LANE FREEWAY UTILIZING THE "DYNAMIC LANE MERGE" SYSTEM USING A REDUCED SPEED LIMIT WHERE WORKERS PRESENT

DRAWN BY: CON:AE:djf	OCTOBER 2011	M1090a	SHEET 1 OF 3
CHECKED BY: BMM:CRB	PLAN DATE:		
FILE: PW RD/TS/Typicals/Signs/MT FWY/M1090a.dgn		REV.	10/26/2011

NOT TO SCALE

A MATCH A




 Michigan Department of Transportation
 TRAFFIC AND SAFETY
 MAINTAINING TRAFFIC
 TYPICAL

TYPICAL TEMPORARY TRAFFIC CONTROL FOR
 A ONE-LANE CLOSURE ON A TWO-LANE
 FREEWAY UTILIZING THE "DYNAMIC LANE
 MERGE" SYSTEM USING A REDUCED SPEED
 LIMIT WHERE WORKERS PRESENT

DRAWN BY: CON:AE:djf
 CHECKED BY: BMM:CRB

OCTOBER 2011
 PLAN DATE:

M1090a

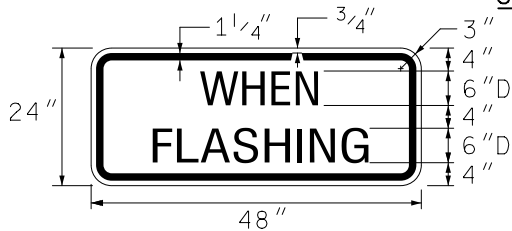
SHEET
 2 OF 3

NOT TO SCALE

NOTES

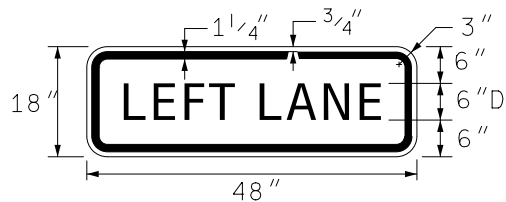
10. L = MINIMUM LENGTH OF TAPER
D = LENGTH OF LONGITUDINAL BUFFER
SEE **M0020a** FOR "L" AND "D" VALUES
2. ALL NON-APPLICABLE SIGNING WITHIN THE CIA SHALL BE MODIFIED TO FIT CONDITIONS, COVERED OR REMOVED.
- 2A. DISTANCES BETWEEN SIGNS, THE VALUES FOR WHICH ARE SHOWN, ARE APPROXIMATE AND MAY NEED ADJUSTING AS DIRECTED BY THE ENGINEER.
- 3A. THE "WORK ZONE BEGINS" (R5-18c) SIGN SHALL BE USED ONLY IN THE INITIAL SIGNING SEQUENCE IN THE WORK ZONE. SUBSEQUENT SEQUENCES IN THE SAME WORK ZONE SHALL OMIT THIS SIGN AND THE QUANTITIES SHALL BE ADJUSTED APPROPRIATELY.
- 4D. THE SPACING OF CHANNELIZING DEVICES SHOULD NOT EXCEED 45 FEET WHEN USED FOR TAPER CHANNELIZATION, AND SHOULD NOT EXCEED 90 FEET WHEN USED FOR TANGENT CHANNELIZATION.
5. FOR OVERNIGHT CLOSURES, TYPE III BARRICADES SHALL BE LIGHTED.
6. WHEN CALLED FOR IN THE FHWA ACCEPTANCE LETTER FOR THE SIGN SYSTEM SELECTED, THE TYPE A WARNING FLASHER, SHOWN ON THE WARNING SIGNS, SHALL BE POSITIONED ON THE SIDE OF THE SIGN NEAREST THE ROADWAY.
7. ALL TEMPORARY SIGNS, TYPE III BARRICADES, THEIR SUPPORT SYSTEMS AND LIGHTING REQUIREMENTS SHALL MEET NCHRP 350 CRASHWORTHLY REQUIREMENTS STIPULATED IN THE CURRENT EDITION OF THE MICHIGAN MANUAL ON UNIFORM TRAFFIC CONTROL DEVICES, THE CURRENT EDITION OF THE STANDARD SPECIFICATIONS FOR CONSTRUCTION, THE STANDARD PLANS AND APPLICABLE SPECIAL PROVISIONS. ONLY DESIGNS AND MATERIALS APPROVED BY MDOT WILL BE ALLOWED.
8. WHEN BUFFER AREAS ARE ESTABLISHED, THERE SHALL BE NO EQUIPMENT OR MATERIALS STORED OR WORK CONDUCTED IN THE BUFFER AREA.
- 16B. WHEN REDUCED SPEED LIMITS ARE UTILIZED IN THE WORK AREA, ADDITIONAL SPEED LIMIT SIGNS RETURNING TRAFFIC TO ITS NORMAL SPEED SHALL BE PLACED BEYOND THE LIMITS OF THE REDUCED SPEED AS INDICATED.
21. ALL EXISTING PAVEMENT MARKINGS WHICH ARE IN CONFLICT WITH EITHER PROPOSED CHANGES IN TRAFFIC PATTERNS OR PROPOSED TEMPORARY TRAFFIC MARKINGS, SHALL BE REMOVED BEFORE ANY CHANGE IS MADE IN THE TRAFFIC PATTERN. EXCEPTION WILL BE MADE FOR DAYTIME-ONLY TRAFFIC PATTERNS THAT ARE ADEQUATELY DELINEATED BY OTHER TRAFFIC CONTROL DEVICES.
26. THE LIGHTED ARROW PANEL SHALL BE LOCATED AT THE BEGINNING OF THE TAPER AS SHOWN. WHEN PHYSICAL LIMITATIONS RESTRICT ITS PLACEMENT AS INDICATED, THEN IT SHALL BE PLACED AS CLOSE TO THE BEGINNING OF THE TAPER AS POSSIBLE.

SIGN DETAILS



COLORS

LEGEND & BORDER - BLACK (NON-REFLECTORIZED)
BACKGROUND - WHITE (REFLECTORIZED)



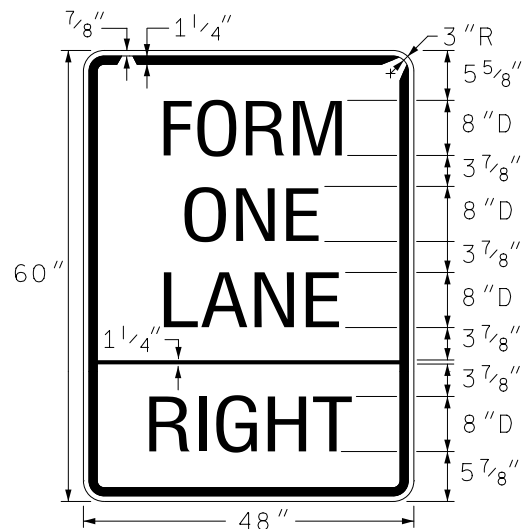
COLORS

LEGEND & BORDER - BLACK (NON-REFLECTORIZED)
BACKGROUND - WHITE (REFLECTORIZED)

SIGN SIZES

DIAMOND WARNING - 48" x 48"
RECTANGULAR REGULATORY - 48" x 60"
R5-18c REGULATORY - 48" x 48"
SIGN DETAILS - AS SHOWN

NOT TO SCALE



COLORS

LEGEND & BORDER - BLACK (NON-REFLECTORIZED)
BACKGROUND - WHITE (REFLECTORIZED)

MDOT
Michigan Department of Transportation
TRAFFIC AND SAFETY
MAINTAINING TRAFFIC
TYPICAL

TYPICAL TEMPORARY TRAFFIC CONTROL FOR
A ONE-LANE CLOSURE ON A TWO-LANE
FREEWAY UTILIZING THE "DYNAMIC LANE
MERGE" SYSTEM USING A REDUCED SPEED
LIMIT WHERE WORKERS PRESENT

DRAWN BY: CON:AE:djf
CHECKED BY: BMM:CRB

OCTOBER 2011
PLAN DATE:

M1090a

SHEET
3 OF 3

FILE: PW RD/TS/Typicals/Signs/MT FWY/M1090a.dgn

REV. 10/26/2011