

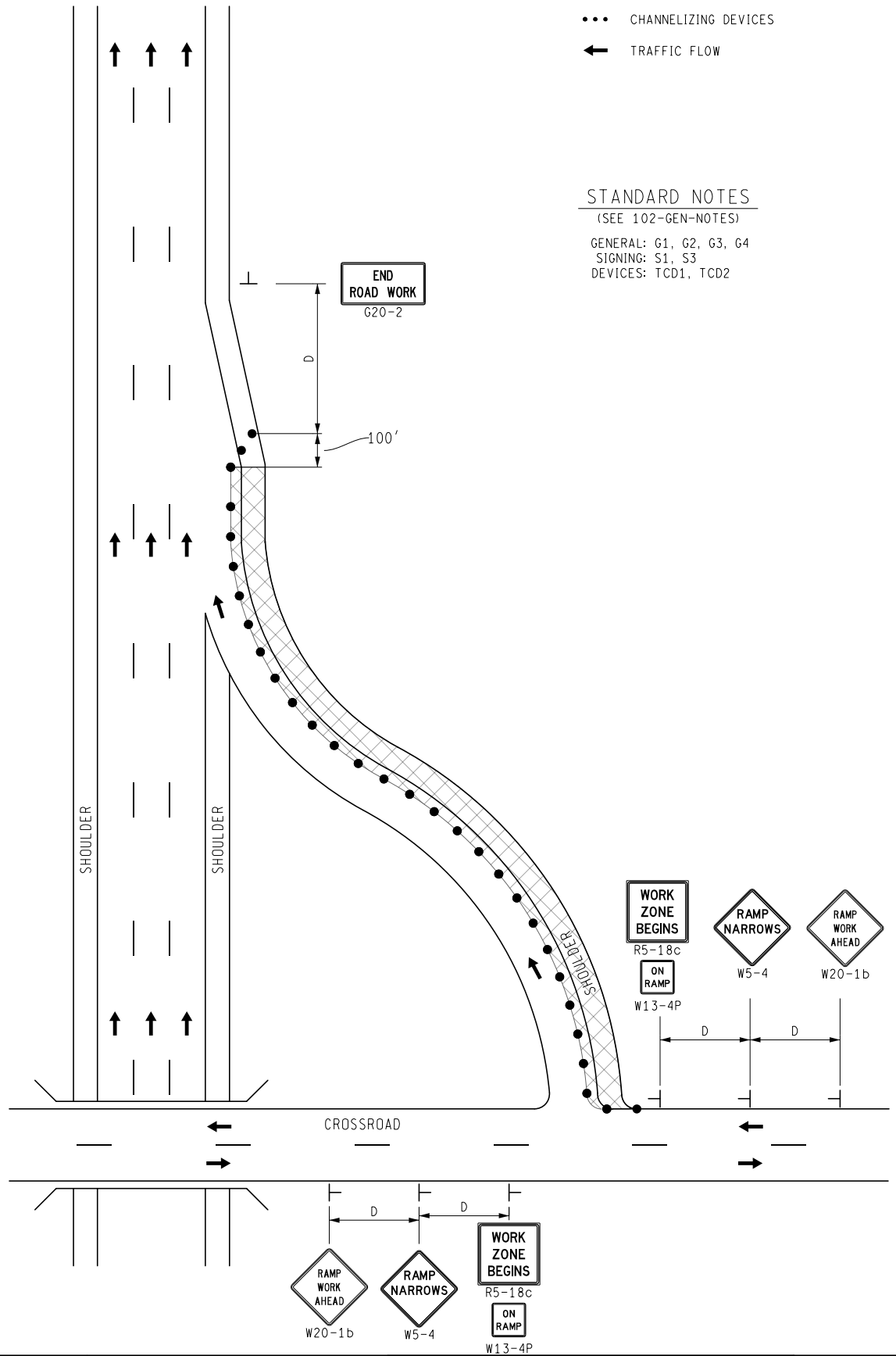
KEY

- CHANNELIZING DEVICES
- ← TRAFFIC FLOW

STANDARD NOTES

(SEE 102-GEN-NOTES)

GENERAL: G1, G2, G3, G4
 SIGNING: S1, S3
 DEVICES: TCD1, TCD2



	NOT TO SCALE	MAINTAINING TRAFFIC TYPICAL	1-LANE SHIFT WITH REDUCED LANE WIDTH ON A 1-LANE FREEWAY ENTRANCE RAMP	DATE: MAY 2021
		NO: 225-FW-EnR-SHL-SHIFT		SHEET: 1 OF 1