

TYPICAL VEHICLE SENSOR NODE CONFIGURATION

INTERSECTION DETECTION CROSS ROAD ACTIVATED (NON-LOCKING)

NOT TO SCALE

File: PW:RD/T&S/Standards/Signals/mdot_420a.dgn

Rev. 06/18/2013



PREPARED BY
TRAFFIC AND SAFETY

DRAWN BY: KMZ

CHECKED BY:

ENGINEER OF DELIVERY

ENGINEER OF DEVELOPMENT

(SPECIAL DETAIL)

FHWA APPROVAL DATE

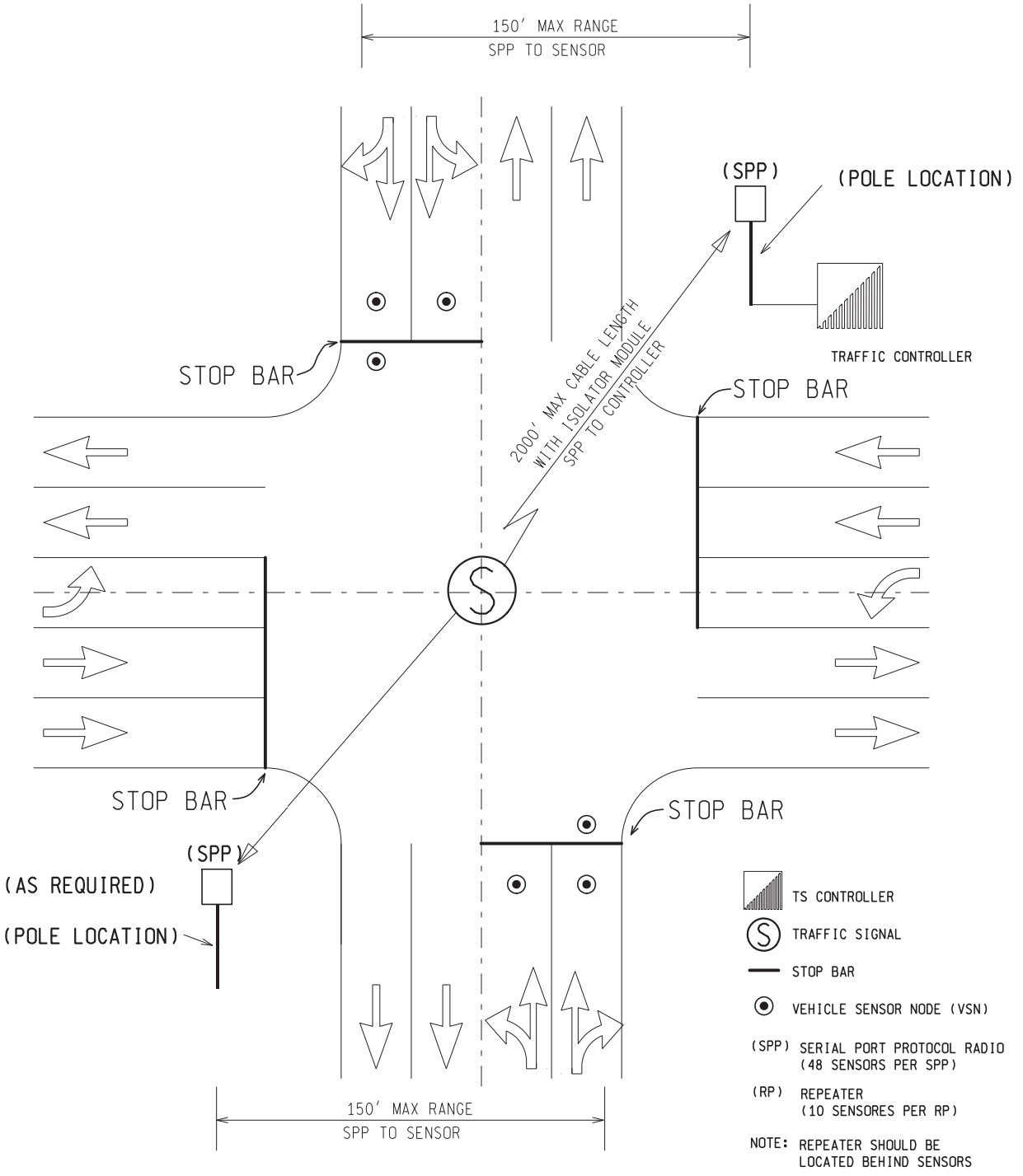
MICHIGAN DEPARTMENT OF TRANSPORTATION
BUREAU OF HIGHWAYS DELIVERY STANDARD PLAN FOR

WIRELESS VEHICLE DETECTION SYSTEM

SIG-420-A

PLAN DATE

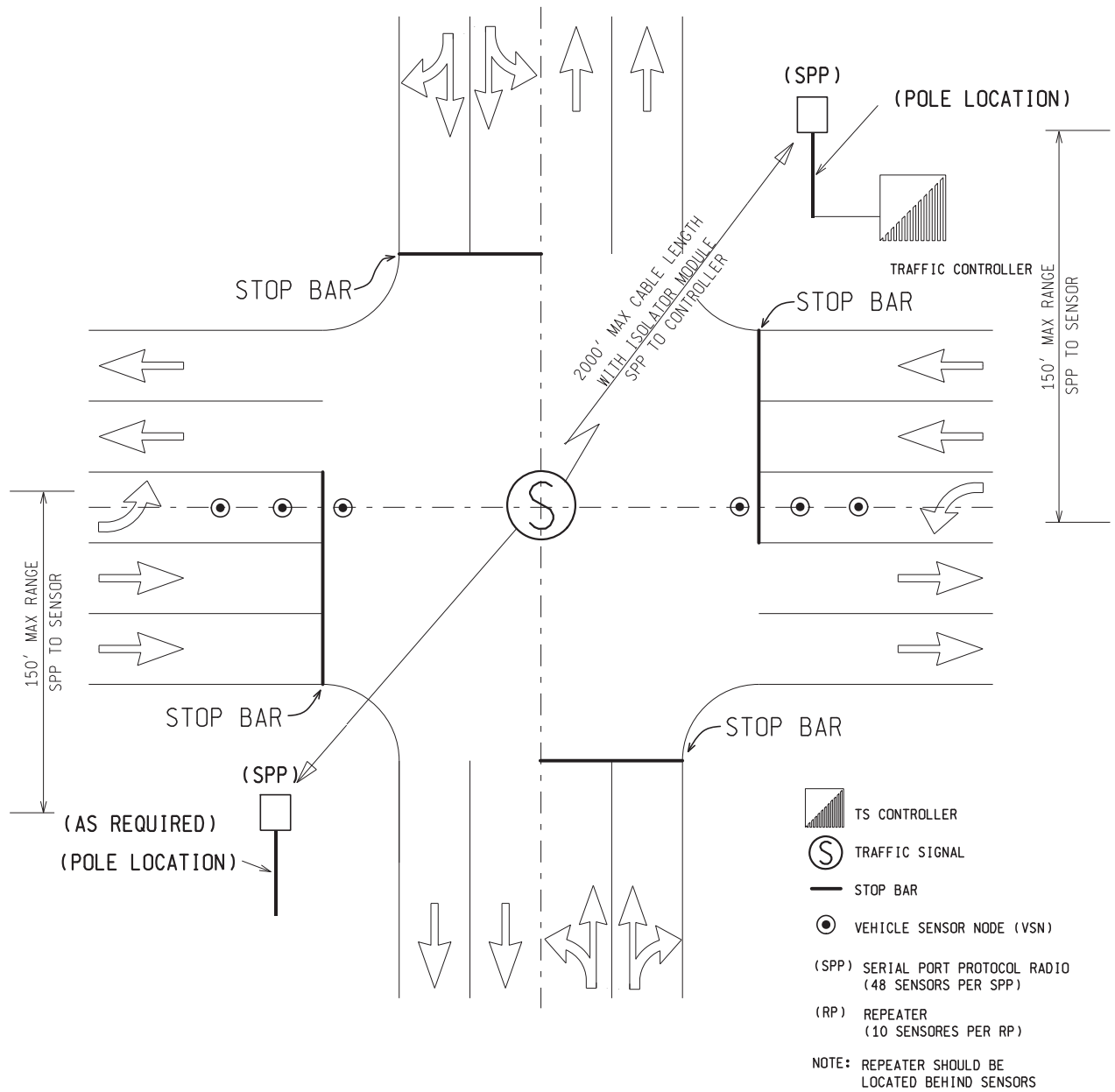
SHEET
1 of 10



TYPICAL VEHICLE SENSOR NODE CONFIGURATION
INTERSECTION DETECTION CROSS ROAD ACTIVATED (LOCKING)

NOT TO SCALE

MICHIGAN DEPARTMENT OF TRANSPORTATION BUREAU OF HIGHWAYS DELIVERY STANDARD PLAN	(SPECIAL DETAIL) FHWA APPROVAL DATE		SIG-420-A	SHEET 2 of 10
File: PW:RD/T&S/Standards/Signals/mdot_420a.dgn	Rev. 06/18/2013	PLAN DATE		



TYPICAL VEHICLE SENSOR NODE CONFIGURATION
 INTERSECTION DETECTION LEFT-TURN ACTIVATED
 PERMISSIVE PROTECTED (NON-LOCKING)

NOT TO SCALE

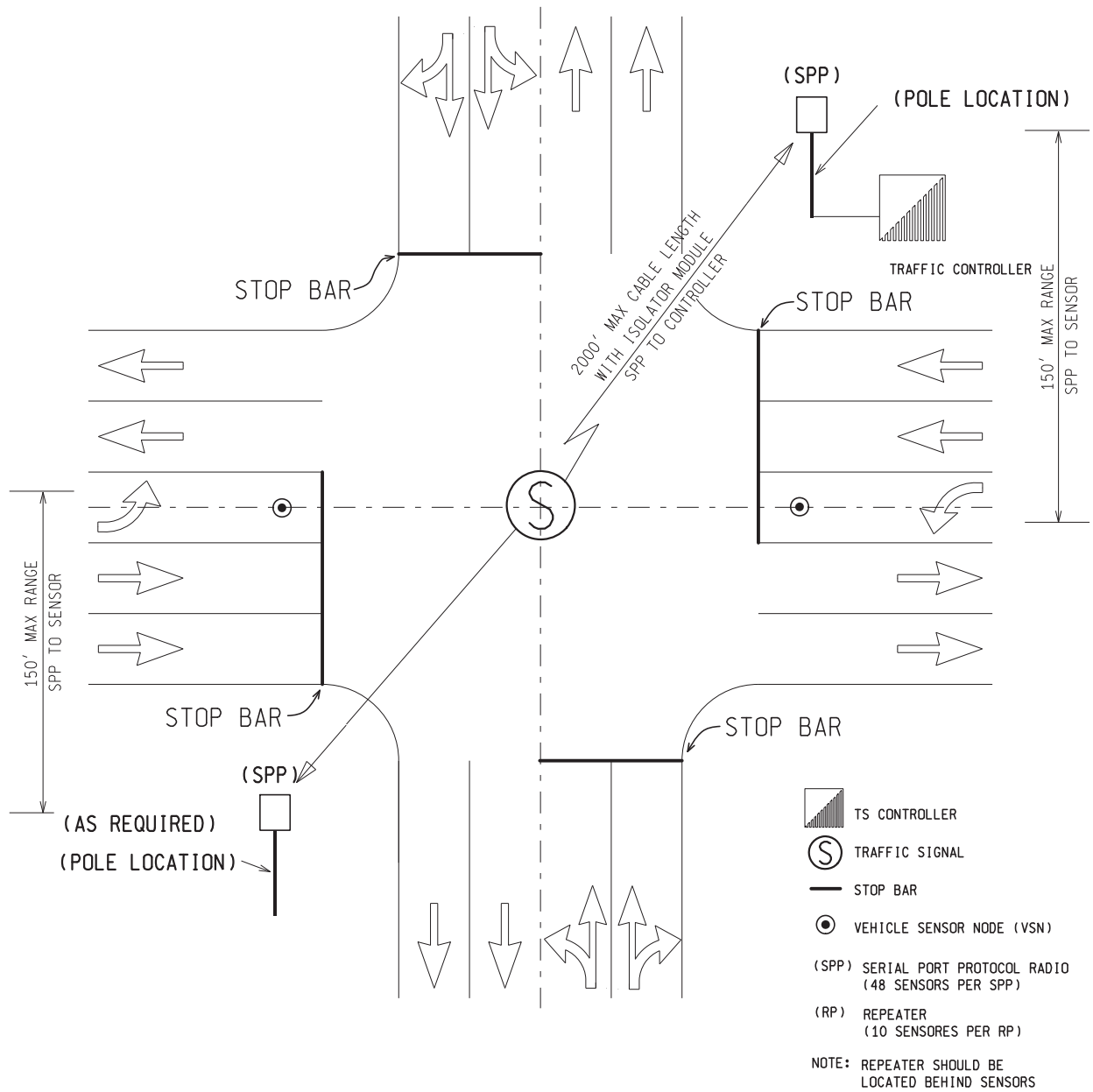
MICHIGAN DEPARTMENT OF TRANSPORTATION
 BUREAU OF HIGHWAYS DELIVERY STANDARD PLAN

(SPECIAL DETAIL)
 FHWA APPROVAL DATE

PLAN DATE

SIG-420-A

SHEET
 3 of 10



TYPICAL VEHICLE SENSOR NODE CONFIGURATION
INTERSECTION DETECTION LEFT-TURN ACTIVATED
PROTECTED ONLY (LOCKING)

NOT TO SCALE

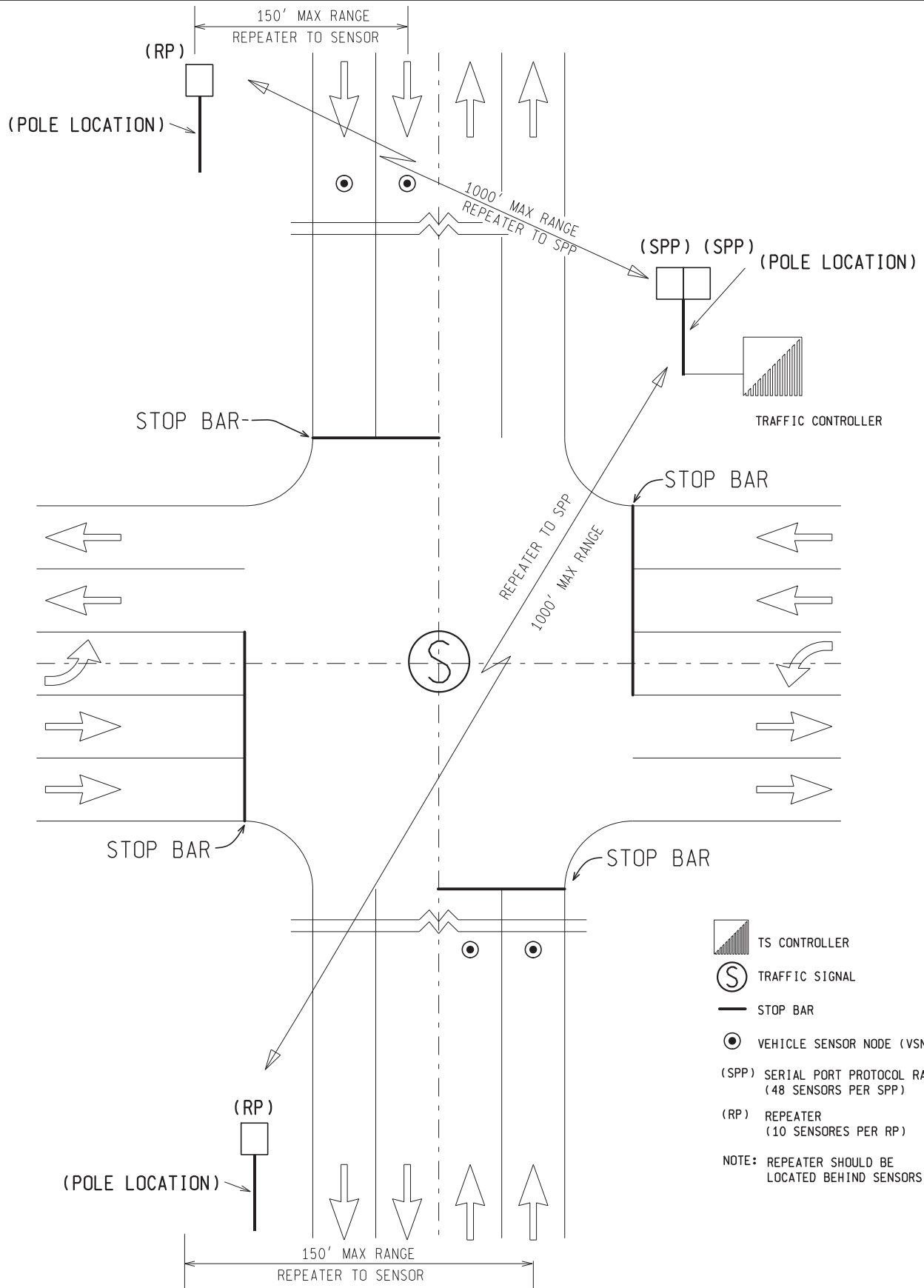
MICHIGAN DEPARTMENT OF TRANSPORTATION
 BUREAU OF HIGHWAYS DELIVERY STANDARD PLAN

(SPECIAL DETAIL)
 FHWA APPROVAL DATE

PLAN DATE

SIG-420-A

SHEET
 4 of 10



TYPICAL VEHICLE SENSOR NODE CONFIGURATION

NOT TO SCALE

ADVANCE DETECTION

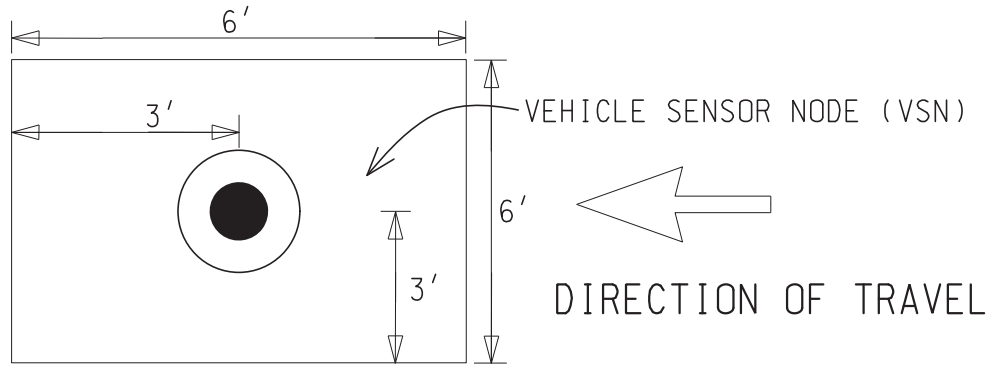
MICHIGAN DEPARTMENT OF TRANSPORTATION
BUREAU OF HIGHWAYS DELIVERY STANDARD PLAN

(SPECIAL DETAIL)
FHWA APPROVAL DATE

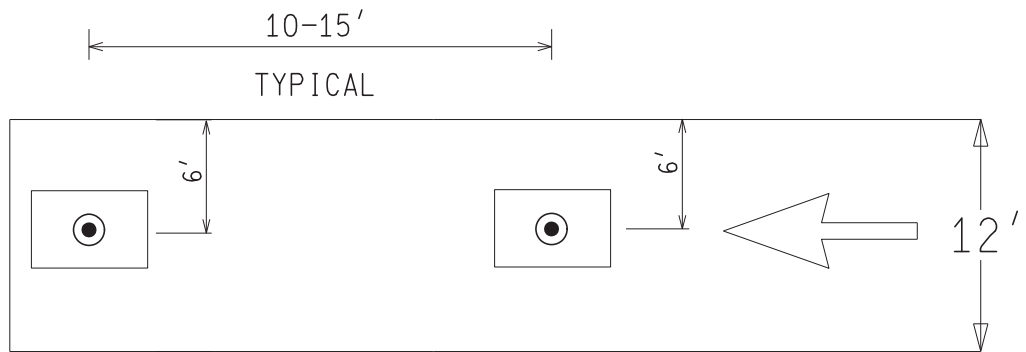
PLAN DATE

SIG-420-A

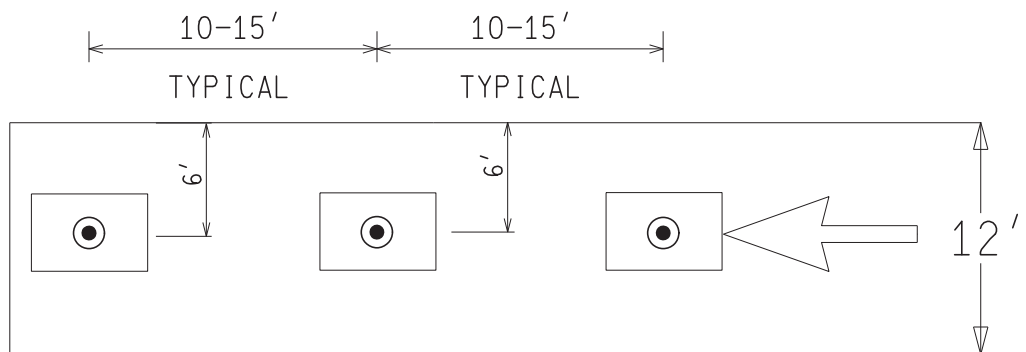
SHEET
5 of 10



TYPICAL 6' X 6' DETECTION ZONE



TYPICAL 6' X 20' DETECTION ZONE



TYPICAL 6' X 30' DETECTION ZONE

NOT TO SCALE

MICHIGAN DEPARTMENT OF TRANSPORTATION
BUREAU OF HIGHWAYS DELIVERY STANDARD PLAN

(SPECIAL DETAIL)
FHWA APPROVAL DATE

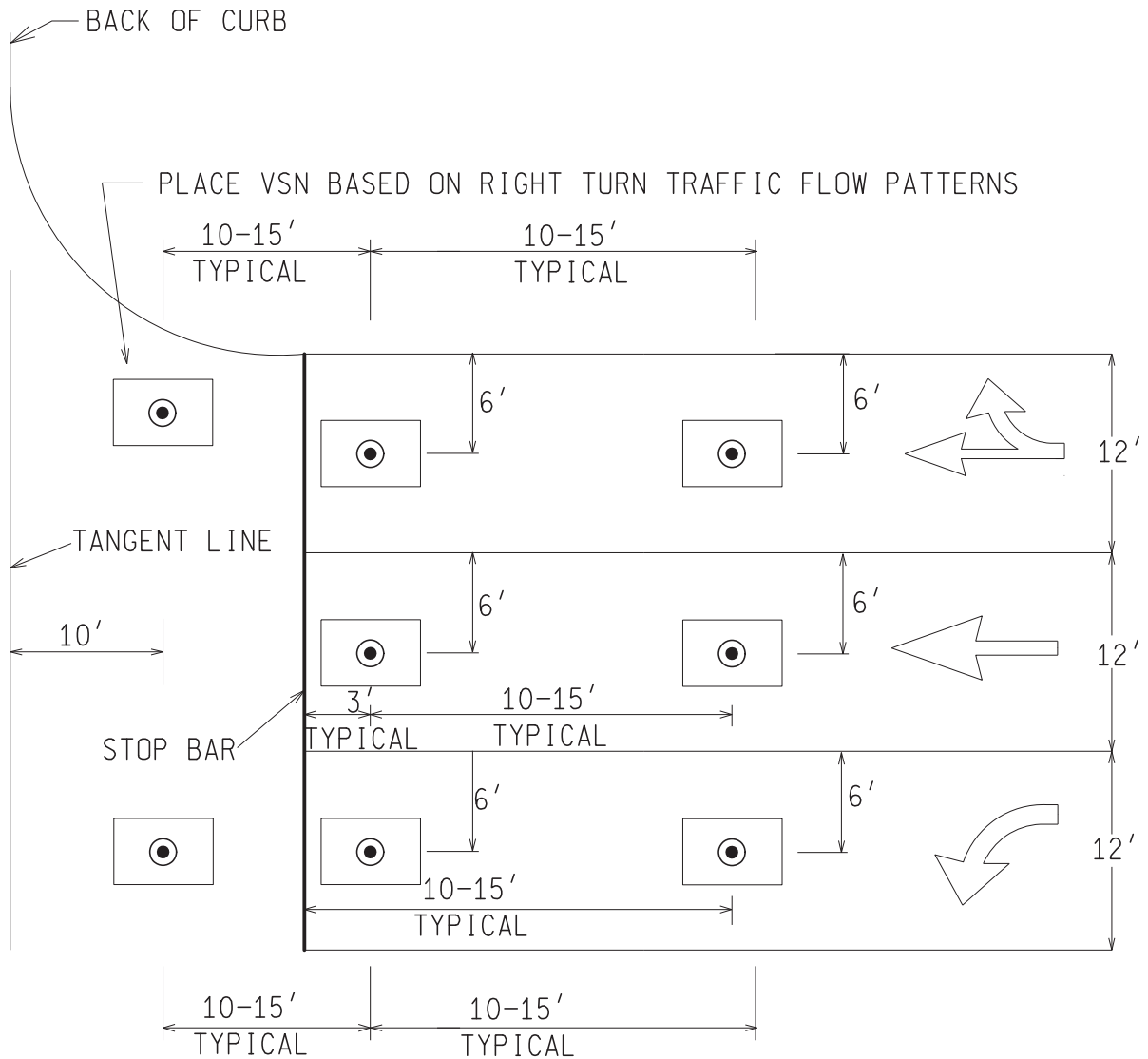
File: PW:RD/T&S/Standards/Signals/mdot_420a.dgn

Rev. 06/18/2013

PLAN DATE

SIG-420-A

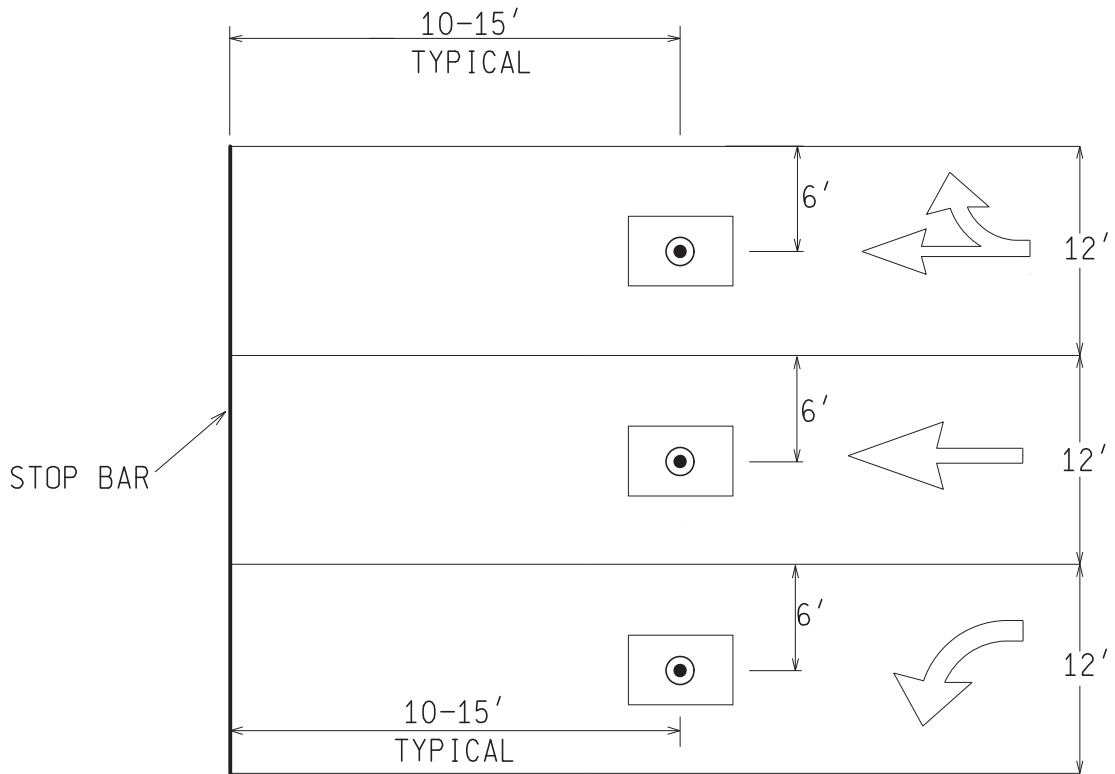
SHEET
6 of 10



TYPICAL VEHICLE SENSOR NODE (NON-LOCKING) INSTALLATION DIAGRAM
 FOR A TWO PHASE (NON-COORDINATED) APPROACH WITH (NON-LOCKING) PERMISSIVE OR
 PERMISSIVE-PROTECTED LEFT TURN PHASING

NOT TO SCALE

MICHIGAN DEPARTMENT OF TRANSPORTATION BUREAU OF HIGHWAYS DELIVERY STANDARD PLAN	(SPECIAL DETAIL) FHWA APPROVAL DATE		SIG-420-A	SHEET 7 of 10
File: PW:RD/T&S/Standards/Signals/mdot_420a.dgn	Rev. 06/18/2013	PLAN DATE		



TYPICAL VEHICLE SENSOR NODE (LOCKING) INSTALLATION DIAGRAM

FOR AT TWO PHASE APPROACH WITH (LOCKING)
PROTECTED ONLY LEFT TURN PHASING

NOT TO SCALE

MICHIGAN DEPARTMENT OF TRANSPORTATION
BUREAU OF HIGHWAYS DELIVERY STANDARD PLAN

(SPECIAL DETAIL)
FHWA APPROVAL DATE

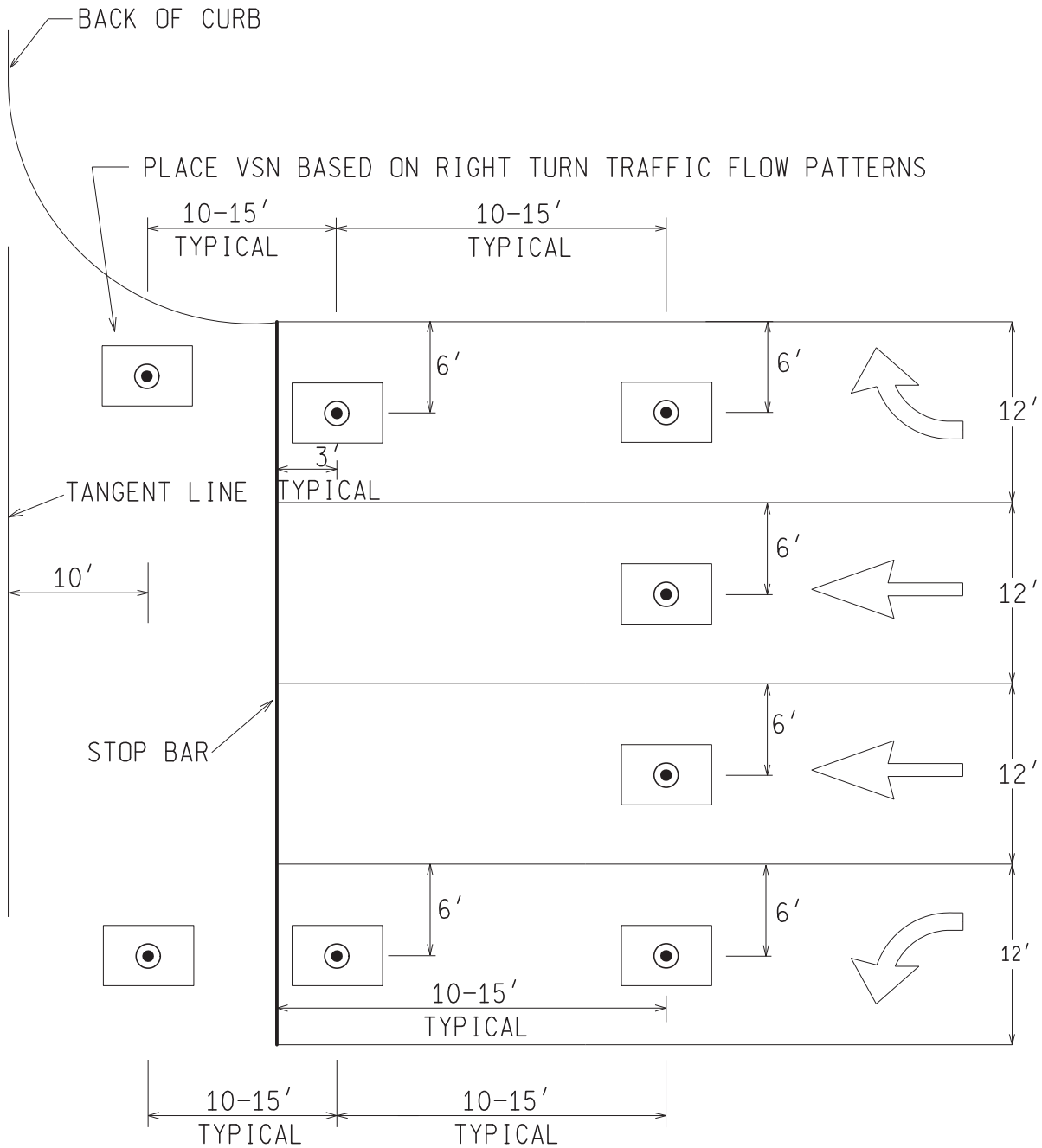
File: PW:RD/T&S/Standards/Signals/mdot_420a.dgn

Rev. 06/18/2013

PLAN DATE

SIG-420-A

SHEET
8 of 10

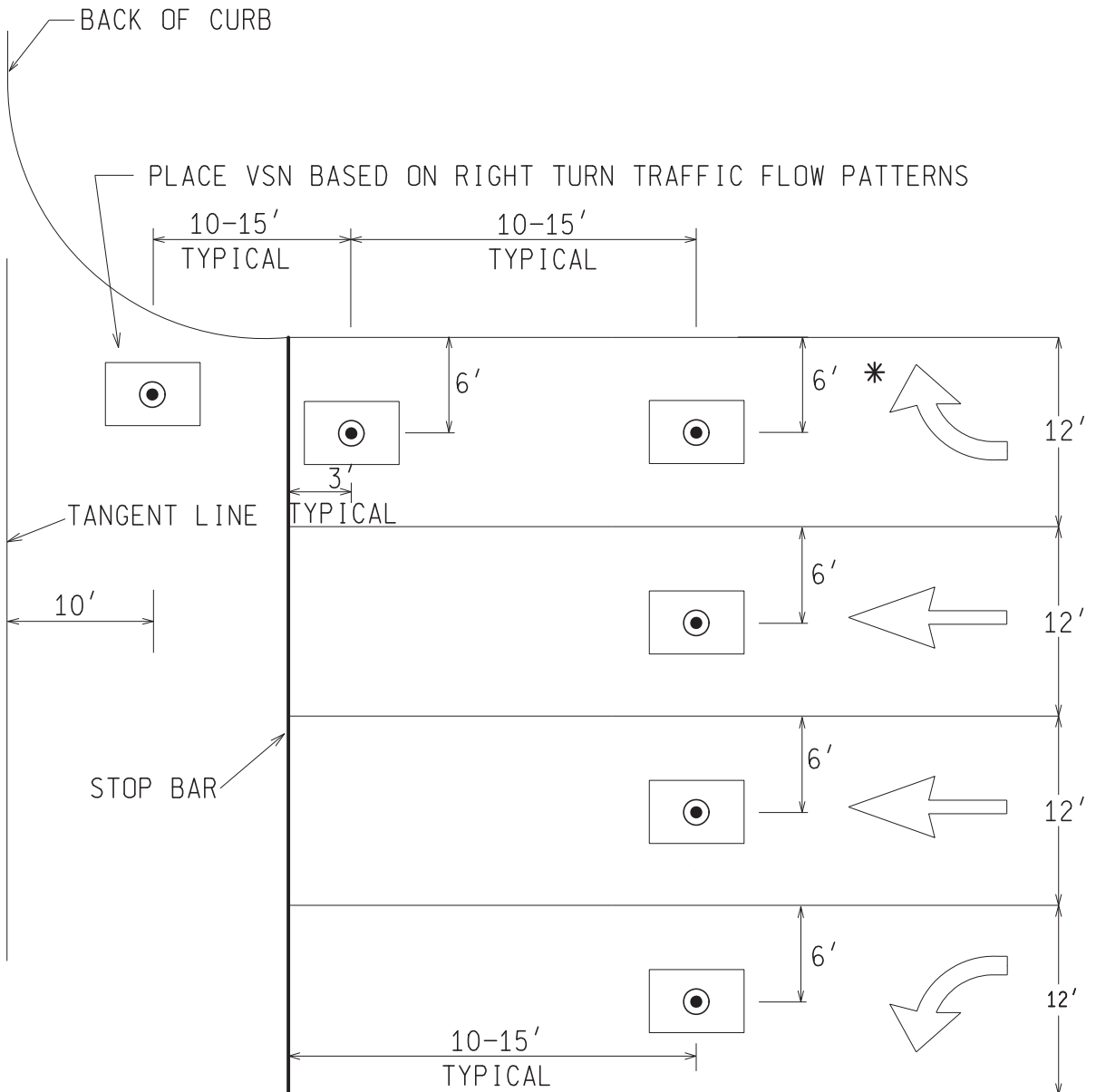


TYPICAL VEHICLE SENSOR NODE (NON-LOCKING) INSTALLATION DIAGRAM

FOR A TWO PHASE (COORDINATED) APPROACH WITH (NON-LOCKING)
 PERMISSIVE OR PERMISSIVE-PROTECTED LEFT TURN PHASING

NOT TO SCALE

MICHIGAN DEPARTMENT OF TRANSPORTATION BUREAU OF HIGHWAYS DELIVERY STANDARD PLAN	(SPECIAL DETAIL) FHWA APPROVAL DATE	PLAN DATE	SIG-420-A	SHEET 9 of 10
File: PW:RD/T&S/Standards/Signals/mdot_420a.dgn	Rev. 06/18/2013	PLAN DATE	SIG-420-A	SHEET 9 of 10



TYPICAL VEHICLE SENSOR NODE (LOCKING) INSTALLATION DIAGRAM

FOR A TWO PHASE APPROACH WITH PROTECTED ONLY LEFT TURN PHASING

* RIGHT TURNS MAY BE NON-LOCKING OR LOCKING WITH RIGHT TURN DELAYS

NOT TO SCALE

MICHIGAN DEPARTMENT OF TRANSPORTATION
BUREAU OF HIGHWAYS DELIVERY STANDARD PLAN

(SPECIAL DETAIL)
FHWA APPROVAL DATE

PLAN DATE

SIG-420-A

SHEET
10 of 10