

KEY

- CHANNELIZING DEVICES
- ← TRAFFIC FLOW
- △ PLACE TYPE III BARRICADES AS INDICATED IN NOTE TCD7

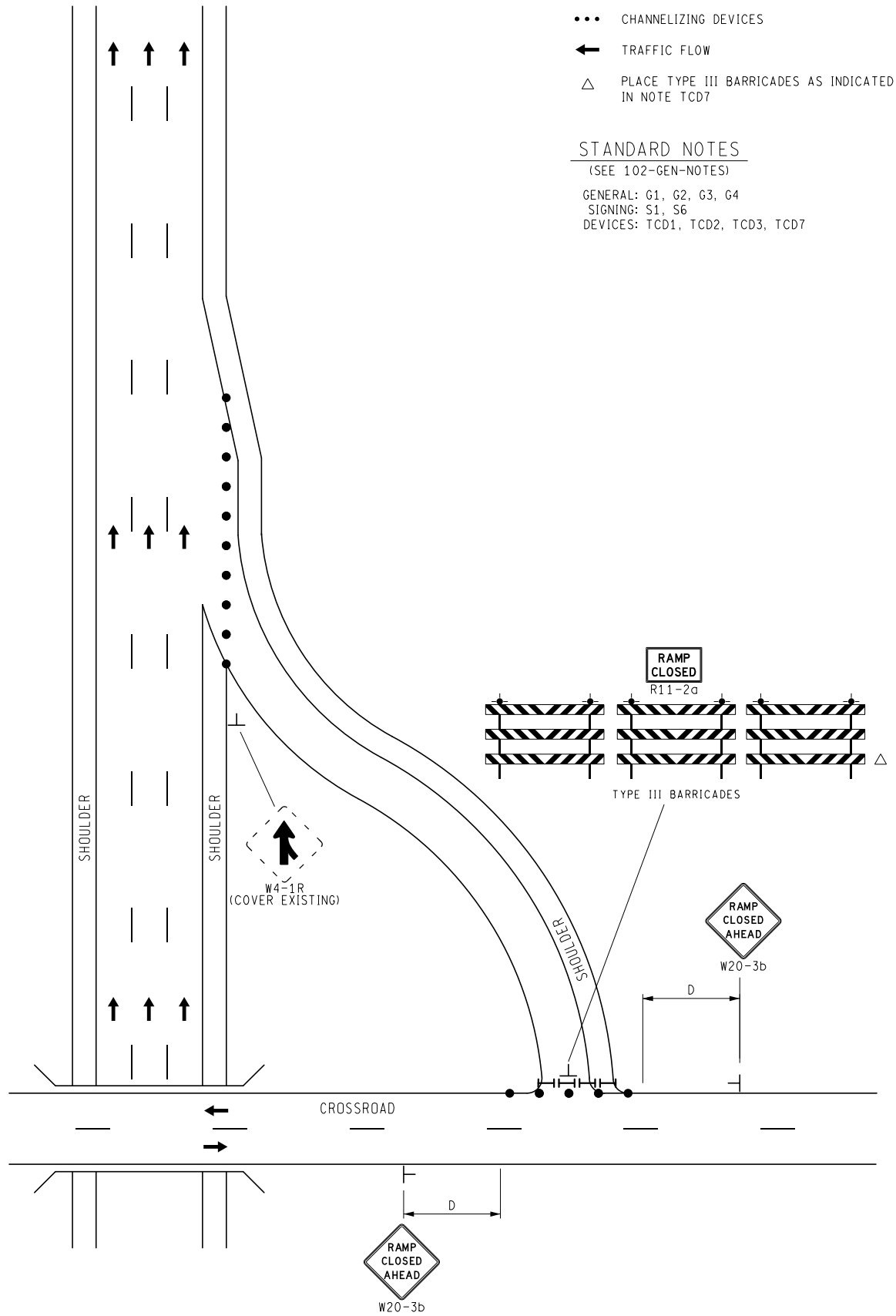
STANDARD NOTES

(SEE 102-GEN-NOTES)

GENERAL: G1, G2, G3, G4

SIGNING: S1, S6

DEVICES: TCD1, TCD2, TCD3, TCD7



NOT TO SCALE

MAINTAINING TRAFFIC TYPICAL

NO:

220-FW-EnR-C

**FREEWAY
ENTRANCE RAMP CLOSURE**

DATE: MAY 2021

SHEET:

1 OF 1