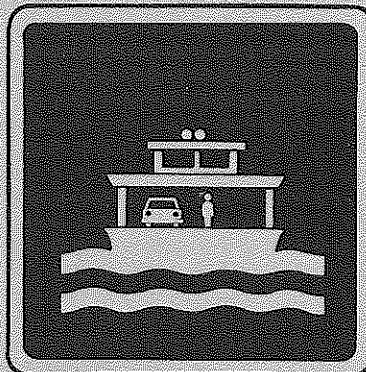
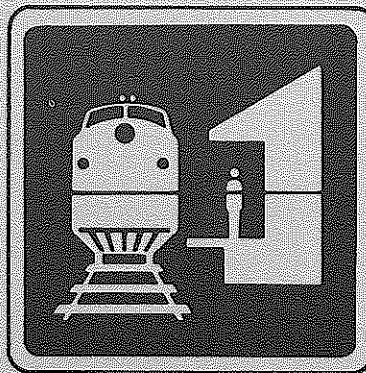
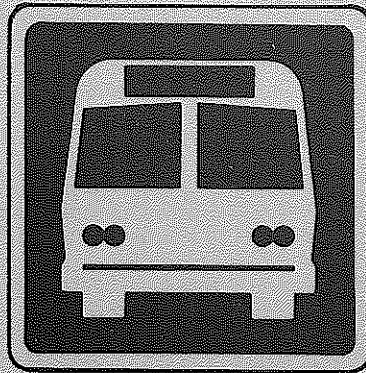


HE
9797.5
.M5
M54
C. 1

PUBLIC TRANSPORTATION IN MICHIGAN

Michigan
Air Carrier Airport
Statistics
1981-1985

May 1986



**PASSENGER TRANSPORTATION PLANNING SECTION
MICHIGAN DEPARTMENT OF TRANSPORTATION**

MICHIGAN DEPARTMENT
OF
TRANSPORTATION

Michigan
Air Carrier Airport
Statistics
1981-1985

May 1986

Bureau of Transportation Planning
Intercity Transportation Planning Division
Passenger Transportation Planning Section

This report represents the findings and/or
professional opinions of the Michigan
Department of Transportation staff and
publication does not represent an official
opinion of the State Transportation Commission.

State Transportation Commission

William C. Marshall, Chairman

Hannes Meyers, Jr.

Rodger D. Young

Carl V. Pellonpaa

Shirley Zeller

William Beckham, Jr.

James P. Pitz
Director

The Aviation Planning Unit maintains historical data on passengers, mail and cargo of each airport with scheduled airline service. These statistics are provided by the airport managers and compiled by the Aviation Planning Unit. These statistics are utilized both to measure aviation activity and to justify projects for state and federal programs. They are also provided to other governmental agencies, private industry, the news media, and the general public.

TABLE OF CONTENTS

	<u>Page</u>
List of Maps, Tables and Figures	iii
Commercial Service Airport Locations	1
Air Service Statistics and Trends.	1
Observations and Conclusions	2

LIST OF MAPS, TABLES AND FIGURES

<u>Maps</u>		<u>Page</u>
1	Michigan Air Carrier Airports	4

Tables

1	Deplaned, Enplaned and Total Passengers at Air Carrier Airports: 1981-85	5
2	Enplanements at Airports with Scheduled Service: 1976-1985	8
3	Deplaned, Enplaned and Total Passengers at Air Carrier Airports: 1984 vs. 1985	10
4	Deplaned, Enplaned and Total Mail at Air Carrier Airports in Pounds: 1984 vs. 1985	14
5	Deplaned, Enplaned and Total Cargo at Air Carrier Airports in Tons: 1984 vs. 1985	19

Figures

1	Enplanements at Airports with Scheduled Service 1976-1985.	9
2	Michigan Air Passenger, 1985 Ridership.	12
3	Michigan Airmail Statistics, 1985 (Pounds).	16
4	Michigan Air Cargo Statistics, 1985 (Tons).	21
5	Enplanements at Phelps Collins Airport - Alpena 1981-1985	23
6	Enplanements at W.K. Kellogg Reg. Airport - Battle Creek, 1981-1985	24
7	Enplanements at Ross Field - Benton Harbor 1981-1985.	25
8	Enplanements at Detroit City Airport, 1981-1985	26
9	Enplanements at Metropolitan Airport - Detroit 1981-1985.	27
10	Enplanements at Delta County Airport - Escanaba 1981-1985	28
11	Enplanements at Bishop Airport - Flint 1981-1985	29
12	Enplanements at Kent Co. Int'l Airport - Grand Rapids, 1981-1985	30
13	Enplanements at Houghton Co. Mem. Airport - Houghton/Hancock, 1981-1985	31
14	Enplanements at Ford Airport - Iron Mountain 1981-1985	32
15	Enplanements at Gogebic County Airport - Ironwood 1981-1985	33
16	Enplanements at Jackson Co. Reynolds Field - Jackson, 1981-1985	34

Figures

Page

17	Enplanements at Kalamazoo Municipal Airport - Kalamazoo, 1981-1985	35
18	Enplanements at Capital City Airport - Lansing, 1981-1985	36
19	Enplanements at Mackinac Island - Airport 1981-1985.	37
20	Enplanements at Manistee Co. Blacker Airport - Manistee, 1981-1985.	38
21	Enplanements at Marquette Co. Airport - Marquette, 1981-1985	39
22	Enplanements at Menominee - Marinette Airport 1981-1985.	40
23	Enplanements at Muskegon Co. Airport - Muskegon 1981-1985.	41
24	Enplanements at Emmett Co. Airport - Pellston 1981-1985.	42
25	Enplanements at Tri-City International Airport - Saginaw, 1981-1985	43
26	Enplanements at Chippewa Co. Airport - Sault Ste. Marie, 1981-1985.	44
27	Enplanements at Cherry Capital Airport - Traverse City, 1981-1985	45
28	Percent of Total Passengers by Air Carrier Airport Millions, 1981	46
29	Percent of Total Passengers by Air Carrier Airport Millions, 1982	47
30	Percent of Total Passengers by Air Carrier Airport Millions, 1983	48
31	Percent of Total Passengers by Air Carrier Airport Millions, 1984	49
32	Percent of Total Passengers by Air Carrier Airport Millions, 1985	50

Commercial Service Airport Locations

During 1985 scheduled air passenger services were provided at 23 Michigan airports. Map 1 identifies those airports with service throughout 1985. Mackinac Island, which began service in 1982, operates a seasonal service during the summer months only. The other 22 airports have been operating since before 1981 and operate throughout the year.

Air Service Statistics and Trends

Table 1 identifies the deplaned, enplaned and total passengers at the 23 commercial service airports for each year between 1981 and 1985. The percent change in total passengers from the previous year is also identified. The 10 year trend of enplaned passengers is identified in Table 2 and graphically portrayed in Figure 1. Table 3 provides a detailed breakdown of passengers; Table 4 airmail; and Table 5 air cargo for 1984 vs. 1985. Figures 2, 3 and 4 gives the monthly breakdown in 1985 for passengers, airmail and cargo, respectively.

Since 1982, when the decline in total passengers ended, total passenger figures have climbed to record statewide levels in 1985. In 1983 the declining trend in total passengers was reversed and an increase of 6.7 percent occurred. This trend continued into 1984 with a 19.7 percent increase. Total annual passenger movements from 1981 to 1985 have increased by 6,998,707 or 62.5 percent. Total passengers in 1985 surpassed the 1979 total by 4,219,925 and the 1984 all time high for Michigan by 4,146,925 passengers.

A five year continual drop in total passengers occurred at Ironwood, Jackson and Muskegon. Detroit City and Sault Ste. Marie reversed a downward trend and showed an increase in 1985 over 1984. Mackinac Island had a three year decline in total passengers.

Total statewide airmail increased by 4.4 percent and total air cargo also increased by 4.4 percent from 1984 to 1985. Airmail decreased at seven of the 13 locations that reported statistics. Only six of the 23 locations showed increases in total air cargo. Detroit Metropolitan and Grand Rapids were responsible for the overall increase in statewide cargo statistics.

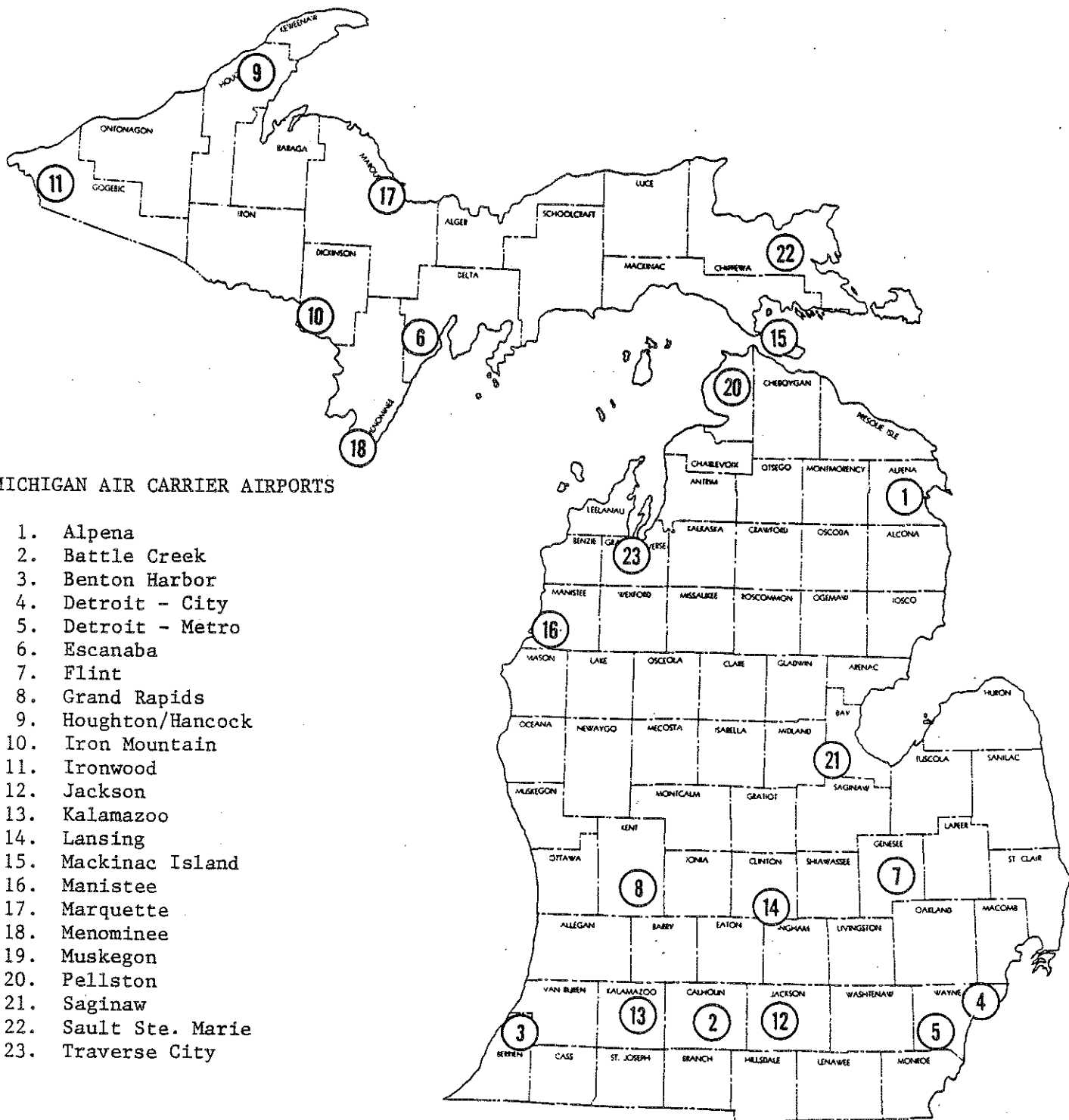
Observations and Conclusions

Figures 5 through 27 identify the monthly trends of enplanements at each of the 23 commercial service airports between 1981 and 1985. Generally, the peak of enplaned passengers during the five year period occurred during 1981 and, as the impacts of air service deregulation and the downturn in the Michigan economy were realized, a steady decline was experienced. During 1983 and 1984 this trend was reversed at the busier airports with passenger levels returning to or exceeding 1981 levels. These locations were Detroit Metropolitan, Flint, Grand Rapids, Houghton/Hancock, Kalamazoo, Lansing, Marquette and Saginaw. At 15 of the airports with a low level of scheduled passenger service, passenger levels remain depressed over the five year period (refer to Table 1). Only 8 locations had higher figures in 1985 than they experienced in 1981.

Figures 28 through 32 identify the market share that each of the five busiest commercial service airports had of the total passenger activity for each year 1981 to 1985. The five busiest airports have increased their market share from 93.1 percent in 1981 to 95.1 percent in 1985.

Detroit Metropolitan, the busiest airport in Michigan, accounted for more than 80.2 percent of the traffic in 1981 and 83.0 percent in 1985. This trend has been generally observed throughout the country as one of the impacts of air service deregulation where the larger, busier airports have increased their share of the market as smaller airports continue to experience declining service and passenger levels.

MAP 1



MICHIGAN AIR CARRIER AIRPORTS

1. Alpena
2. Battle Creek
3. Benton Harbor
4. Detroit - City
5. Detroit - Metro
6. Escanaba
7. Flint
8. Grand Rapids
9. Houghton/Hancock
10. Iron Mountain
11. Ironwood
12. Jackson
13. Kalamazoo
14. Lansing
15. Mackinac Island
16. Manistee
17. Marquette
18. Menominee
19. Muskegon
20. Pellston
21. Saginaw
22. Sault Ste. Marie
23. Traverse City

Table 1

DEPLANED, ENPLANED AND TOTAL PASSENGERS AT AIR CARRIER AIRPORTS: 1981-85

CITY	YEAR	PASSENGERS DEPLANED	PASSENGERS ENPLANED	TOTAL PASSENGERS	PERCENT CHANGE
ALPENA	1981	7079	7007	14086	
	1982	4056	3963	8009	-43.1%
	1983	4074	4091	8165	1.9%
	1984	4196	4375	8571	5.0%
	1985	5008	4985	9993	16.6%
BATTLE CREEK	1981	19614	20644	40258	
	1982	20348	20851	41199	2.3%
	1983	18212	18698	36910	-10.4%
	1984	18791	18940	37731	2.2%
	1985	16255	17112	33367	-11.6%
BENTON HARBOR	1981	15003	17607	32610	
	1982	8498	9898	18396	-43.6%
	1983	10673	11454	22127	20.3%
	1984	13069	13749	26818	21.2%
	1985	11255	11536	22791	-15.0%
DETROIT CITY	1981	25992	27507	53499	
	1982	25856	25217	51073	-4.5%
	1983	22868	23080	45948	-10.0%
	1984	21286	22354	43640	-5.0%
	1985	22352	23306	45658	4.6%
DETROIT - METRO	1981	4497667	4484880	8982547	
	1982	4457037	4418887	8875924	-1.2%
	1983	4580235	4548393	9128628	2.8%
	1984	5654617	5643208	11297825	23.8%
	1985	7517719	7585820	15103539	33.7%
ESCANABA	1981	14469	16376	30845	
	1982	16571	15933	32504	5.4%
	1983	14797	15824	30621	-5.8%
	1984	15160	15459	30619	.0%
	1985	10577	10865	21442	-30.0%
FLINT	1981	55399	54031	109430	
	1982	45487	43286	88773	-18.9%
	1983	83606	85005	168611	89.9%
	1984	115163	118257	233420	38.4%
	1985	132891	134588	267479	14.6%
GRAND RAPIDS	1981	356536	345810	702346	
	1982	366762	373477	740239	5.4%
	1983	494525	491416	985941	33.2%
	1984	519085	520686	1039771	5.5%
	1985	599636	595605	1195241	15.0%

cont.

CITY	YEAR	PASSENGERS DEPLANED	PASSENGERS ENPLANED	TOTAL PASSENGERS	PERCENT CHANGE
HOUGHTON/HANCOCK	1981	20715	20895	41610	
	1982	18389	18727	37116	-10.8%
	1983	21344	19939	41283	11.2%
	1984	20002	19644	39646	-4.0%
	1985	20448	21167	41615	5.0%
IRON MOUNTAIN	1981	13020	13263	26283	
	1982	10095	10370	20465	-22.1%
	1983	10336	10662	20998	2.6%
	1984	10718	10845	21563	2.7%
	1985	8713	8683	17396	-19.3%
IRONWOOD	1981	7939	8131	16070	
	1982	7152	6702	13854	-13.8%
	1983	5131	5158	10289	-25.7%
	1984	3026	3079	6105	-40.7%
	1985	2893	2996	5889	-3.5%
JACKSON	1981	3360	3767	7127	
	1982	1893	1994	3887	-45.5%
	1983	1585	1429	3014	-22.5%
	1984	1342	1103	2445	-18.9%
	1985	1021	1029	2050	-16.2%
KALAMAZOO	1981	102040	101197	203237	
	1982	89563	86364	175927	-13.4%
	1983	106162	100989	207151	17.7%
	1984	124975	124684	249659	20.5%
	1985	172828	168065	340893	36.5%
LANSING	1981	133038	123767	256805	
	1982	127315	129779	257094	0.1%
	1983	177255	172858	350113	36.2%
	1984	170235	163569	333804	-4.7%
	1985	171033	172966	343999	3.1%
MACKINAC ISLAND	1981	-	-	-	
	1982	946	990	1936	
	1983	870	881	1751	-9.6%
	1984	630	783	1413	-19.3%
	1985	582	720	1302	-7.9%
MANISTEE	1981	1219	1555	2774	
	1982	665	901	1566	-43.5%
	1983	814	852	1666	6.4%
	1984	834	890	1724	3.5%
	1985	72	97	169	-90.2%
MARQUETTE	1981	28975	29610	58585	
	1982	26624	27255	53879	-8.0%
	1983	32815	32942	65757	22.0%
	1984	36258	35898	72156	9.7%
	1985	37039	38171	75210	4.2%

cont.

CITY	YEAR	PASSENGERS DEPLANED	PASSENGERS ENPLANED	TOTAL PASSENGERS	PERCENT CHANGE
MENOMINEE	1981	4079	3959	8038	
	1982	2327	2206	4533	-43.6%
	1983	1675	1494	3169	-30.1%
	1984	1615	1571	3186	0.5%
	1985	1062	1056	2118	-33.5%
MUSKEGON	1981	49495	50762	100257	
	1982	46036	48612	94648	-5.6%
	1983	44413	44690	89103	-5.9%
	1984	43802	43986	87788	-1.5%
	1985	42314	44468	86782	-1.1%
PELLSTON	1981	18304	18624	36928	
	1982	16648	17307	33955	-8.1%
	1983	19731	20154	39885	17.5%
	1984	20833	20706	41539	4.1%
	1985	15681	14740	30421	-26.8%
SAGINAW	1981	153173	155435	308608	
	1982	144413	150312	294725	-4.5%
	1983	156801	163499	320300	8.7%
	1984	158621	159014	317635	-0.8%
	1985	188739	191981	380720	19.9%
SAULT STE. MARIE	1981	6216	6457	12673	
	1982	5318	5569	10887	-14.1%
	1983	4783	4969	9752	-10.4%
	1984	3849	4198	8047	-17.5%
	1985	5060	5017	10077	25.2%
TRAVERSE CITY	1981	71660	73166	144826	
	1982	64021	65368	129389	-10.7%
	1983	70156	68927	139083	7.5%
	1984	68828	67295	136123	-2.1%
	1985	75458	74540	149998	10.2%
T O T A L	1981	5604992	5584450	11189442	
	1982	5506041	5486994	10993035	-1.8%
	1983	5883017	5847599	11730616	6.7%
	1984	7026934	7014290	14041224	19.7%
	1985	9058636	9129513	18188149	29.5%

SOURCE: MICHIGAN DEPARTMENT OF TRANSPORTATION, AVIATION PLANNING UNIT.

NOTES: MACKINAC ISLAND OPERATES ONLY DURING THE SUMMER MONTHS WITH SERVICE STARTING IN 1982.

MANISTEE HAD SERVICE TERMINATED IN DECEMBER OF 1984 AND BEGAN SERVICE IN OCTOBER OF 1985.

Table 2

ENPLANEMENTS AT AIRPORTS WITH SCHEDULED SERVICE: 1976 - 1985

CITY	1976	1977	1978	1979	1980	1981	1982	1983	1984	1985 10YR % CHANG	
ALPENA	9757	10978	12615	13020	12038	7007	3963	4091	4375	4985	-48.9%
BATTLE CREEK	22915	29646	30582	28369	24097	20644	20851	18698	18940	17112	-25.3%
BENTON HARBOR	31347	35511	34431	37508	29133	17607	9898	11454	13749	11536	-63.2%
DETROIT - CITY	27784	32072	35483	38597	33732	27507	25217	23080	22354	23306	-16.1%
DETROIT - METRO	3957830	4272391	4769762	5333450	4830851	4484880	4418887	4548393	5643208	7585820	91.7%
ESCANABA	16543	17988	17317	21471	21464	16376	15933	15824	15459	10865	-34.3%
FLINT	114107	129710	138213	119763	83880	54031	46286	85005	118257	134588	17.9%
GRAND RAPIDS	309624	365164	420709	459268	429341	345810	373477	491416	520686	595605	92.4%
HOUGHTON/HANCOCK	21857	23243	26281	27614	24796	20895	18727	19939	19644	21167	-3.2%
IRON MOUNTAIN	17749	19359	22265	17883	18676	13263	10370	10662	10845	8683	-51.1%
IRONWOOD	8861	9171	10125	11796	11533	8131	6702	5158	3079	2996	-66.2%
JACKSON	8995	10448	10196	8651	7377	3767	1994	1429	1103	1029	-88.6%
KALAMAZOD	110082	105924	135815	141677	118591	101197	86364	100989	124684	168065	52.7%
LANSING	178175	201681	221301	220046	180302	123767	129779	172858	163569	172966	-2.9%
MACKINAC ISLAND							990	881	783	720	-27.3%
MANISTEE	2985	2933	2844	2877	2416	1555	901	852	890	97	-96.8%
MARQUETTE	35221	38410	42569	41840	33718	29610	27255	32942	35898	38171	8.4%
MENOMINEE	9438	9997	10978	10468	10211	3959	2206	1494	1571	1056	-88.8%
MUSKEGON	77820	82629	85832	81159	53040	50762	48612	44690	43986	44468	-42.9%
PELLSTON	25344	27506	30128	30096	25457	18624	17307	20154	20706	14740	-41.8%
SAGINAW	189577	205690	226745	229629	190392	155435	150312	163499	159014	191981	1.3%
SAULT STE. MARIE	14223	12886	12179	13019	10736	6457	5569	4969	4195	5017	-64.7%
TRAVERSE CITY	61271	69256	78067	89060	78163	73166	65638	68927	67295	74540	21.7%
TOTAL	5251505	5712593	6374437	6977261	6229944	5584450	5487238	5847404	7014290	9129513	73.8%

SOURCE: MDDT, Aviation Planning Unit

NOTES: Mackinac Island Percent Change Calculated From 1982 to 1985.

Figure 1

ENPLANEMENTS AT AIRPORTS WITH SCHEDULED SERVICE
1976 - 1985

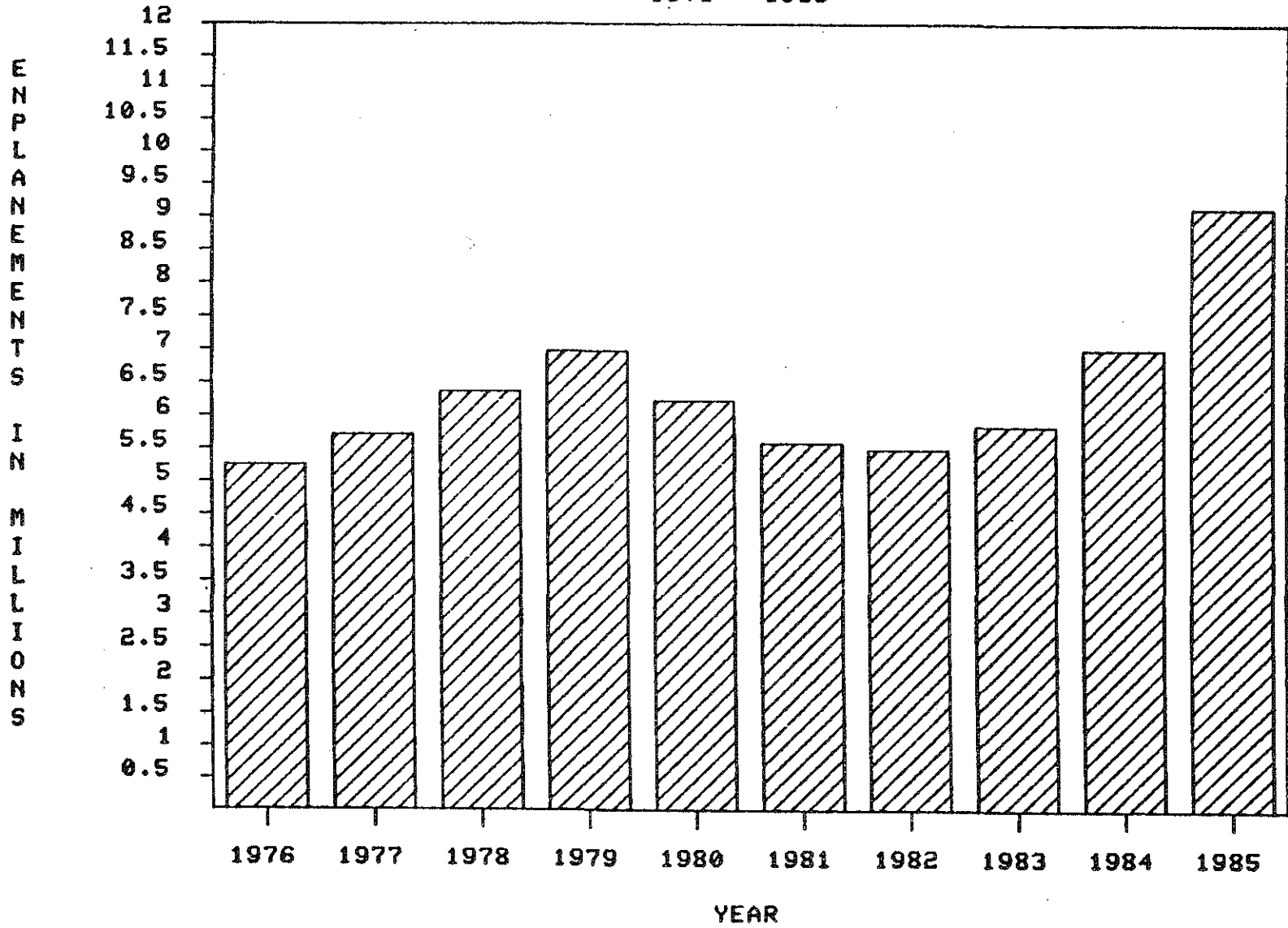


Table 3

DEPLANED, ENPLANED AND TOTAL PASSENGERS AT AIR CARRIER AIRPORTS: 1984 VS. 1985

LOCATION		1984	1985	% CHANGE
ALPENA	D	4196	5008	19.4%
	E	4375	4985	13.9%
	T	8571	9993	16.6%
BATTLE CREEK	D	18791	16255	-13.5%
	E	18940	17112	-9.7%
	T	37731	33367	-11.6%
BENTON HARBOR	D	13068	11255	-13.9%
	E	13749	11536	-16.1%
	T	26817	22791	-15.0%
DETROIT CITY	D	21286	22352	5.0%
	E	22354	23306	4.3%
	T	43640	45658	4.6%
DETROIT METRO	D	5654617	7517719	32.9%
	E	5643208	7585820	34.4%
	T	11297825	15103539	33.7%
ESCANABA	D	15160	10577	-30.2%
	E	15459	10865	-29.7%
	T	30619	21442	-30.0%
FLINT	D	115163	132891	15.4%
	E	118257	134588	13.8%
	T	233420	267479	14.6%
GRAND RAPIDS	D	519085	599636	15.5%
	E	520686	595605	14.4%
	T	1039771	1195241	15.0%
HOUGHTON/HANCOCK	D	20002	20448	2.2%
	E	19644	21167	7.8%
	T	39646	41615	5.0%
IRON MOUNTAIN	D	10718	8713	-18.7%
	E	10845	8683	-19.9%
	T	21563	17396	-19.3%
IRONWOOD	D	3026	2893	-4.4%
	E	3079	2996	-2.7%
	T	6105	5889	-3.5%
JACKSON	D	1342	1021	-23.9%
	E	1103	1029	-6.7%
	T	2445	2050	-16.2%

cont.

LOCATION		1984	1985	% CHANGE
KALAMAZOO	D	124975	172828	38.3%
	E	124684	168065	34.8%
	T	249659	340893	36.5%
LANSING	D	170235	171033	0.5%
	E	163569	172966	5.7%
	T	333804	343999	3.1%
MACKINAC ISLAND	D	630	582	-7.6%
	E	783	720	-8.0%
	T	1413	1302	-7.9%
MANISTEE	D	834	72	-91.4%
	E	890	97	-89.1%
	T	1724	169	-90.2%
MARQUETTE	D	36258	37039	2.2%
	E	35898	38171	6.3%
	T	72156	75210	4.2%
MENOMINEE	D	1615	1062	-34.2%
	E	1571	1056	-32.8%
	T	3186	2118	-33.5%
MUSKOGON	D	43802	42314	-3.4%
	E	43986	44468	1.1%
	T	87788	86782	-1.1%
PELLSTON	D	20833	15681	-24.7%
	E	20706	14740	-28.8%
	T	41539	30421	-26.8%
SAGINAW	D	158621	188739	19.0%
	E	159014	191981	20.7%
	T	317635	380720	19.9%
SAULT STE. MARIE	D	3849	5060	31.5%
	E	4195	5017	19.6%
	T	8044	10077	25.3%
TRAVERSE CITY	D	68828	75458	9.6%
	E	67295	74540	10.8%
	T	136123	149998	10.2%
TOTAL	D	7026934	9058636	28.9%
	E	7014290	9129513	30.2%
	T	14041224	18188149	29.5%

SOURCE: MICHIGAN DEPARTMENT OF TRANSPORTATION, AVIATION PLANNING UNIT.

NOTES: D = DEPLANED PASSENGERS
E = ENPLANED PASSENGERS
T = TOTAL PASSENGERS

Figure 2

MICHIGAN AIR PASSENGER
1985
RIDERSHIP

CITY	*	JAN	FEB	MAR	APR	MAY	JUN	JUL	AUG	SEP	OCT	NOV	DEC	TOT
ALPENA	D	398	356	384	324	441	549	430	492	393	443	421	377	5008
	E	414	370	413	352	397	559	424	450	417	419	388	382	4985
	T	812	726	797	676	838	1108	854	942	810	862	809	759	9993
BATTLE CREEK	D	1100	1305	1632	1760	1727	1585	1354	1312	1263	1463	991	763	16255
	E	1258	1434	1668	1633	1897	1663	1481	1299	1326	1409	1126	918	17112
	T	2358	2739	3300	3393	3624	3248	2835	2611	2589	2872	2117	1681	33367
RENTON HARBOR	D	973	737	1109	1012	1061	1113	1010	978	843	896	814	709	11255
	E	960	740	1124	1043	1051	1115	1032	1108	870	942	853	698	11536
	T	1933	1477	2233	2055	2112	2228	2042	2086	1713	1838	1667	1407	22791
DETROIT - CITY	D	1671	1526	1744	1750	1727	1984	1893	1988	2242	2540	1872	1415	22352
	E	1806	1706	1938	2002	2199	1943	1857	1989	2170	2492	1875	1329	23306
	T	3477	3232	3682	3752	3926	3927	3750	3977	4412	5032	3747	2744	45658
DETROIT - METRO	D	458879	437656	611135	639454	697759	727370	713629	734675	593463	648752	598133	656814	7517719
	E	451186	466294	604869	630470	692588	737042	703842	739373	603693	658391	608607	689465	7585820
	T	910065	903950	1216004	1269924	1390347	1464412	1417471	1474048	1197156	1307143	1206740	1346279	15103539
ESCANABA	D	1005	835	907	1127	922	920	1042	988	733	848	590	660	10577
	E	1097	916	960	1004	939	968	1054	975	840	848	601	663	10865
	T	2102	1751	1867	2131	1861	1888	2096	1963	1573	1696	1191	1323	21442
FLINT	D	11046	9804	12552	12088	11084	12193	10598	12766	10393	9911	9414	11042	132891
	E	11476	10780	12113	11978	11036	11997	10695	12270	10226	10563	9666	11788	134588
	T	22522	20584	24665	24066	22120	24190	21293	25036	20619	20474	19080	22830	267479
GRAND RAPIDS	D	40584	37747	60754	62536	51152	51549	54311	55462	42428	46814	44316	51983	599636
	E	41275	42131	66467	51759	49466	49936	52632	54292	43111	47032	43759	53745	595605
	T	81859	79878	127221	114295	100618	101485	106943	109754	85539	93846	88075	105728	1195241
HOUGHTON/HANCOCK	D	1738	1507	2312	1985	1554	1750	1910	2215	1375	1655	1184	1263	20448
	E	1786	1872	2045	1982	1626	1752	1922	2262	1430	1834	1285	1371	21167
	T	3524	3379	4357	3967	3180	3502	3832	4477	2805	3489	2469	2634	41615
IRON MOUNTAIN	D	678	656	638	644	737	1063	866	867	697	593	565	709	8713
	E	750	647	634	734	801	976	824	774	655	613	564	711	8683
	T	1428	1303	1272	1378	1538	2039	1690	1641	1352	1206	1129	1420	17396
IRONWOOD	D	283	191	224	167	225	294	267	247	182	214	202	397	2893
	E	292	191	225	164	195	276	307	200	219	271	259	397	2996
	T	575	382	449	331	420	570	574	447	401	485	461	794	5889
JACKSON	D	47	82	69	88	120	124	77	106	78	96	77	57	1021
	E	59	90	69	104	143	115	62	117	68	91	56	55	1029
	T	106	172	138	192	263	239	139	223	146	187	133	112	2050

CITY	*	JAN	FEB	MAR	APR	MAY	JUN	JUL	AUG	SEP	OCT	NOV	DEC	TOT
KALAMAZOO	D	12754	11171	15612	15916	16618	14943	13839	15069	12823	15308	13193	15582	172828
	E	12474	11737	15518	15470	15241	14485	13012	14231	12432	14807	12933	15725	168065
	T	25228	22908	31130	31386	31859	29428	26851	29300	25255	30115	26126	31307	340893
LANSING	D	12653	12249	17452	16857	15121	13764	13653	14634	13104	13684	12713	15149	171033
	E	11802	12728	18258	16811	14510	14210	13532	15138	12796	14097	12979	16105	172966
	T	24455	24977	35710	33668	29631	27974	27185	29772	25900	27781	25692	31254	343999
MACKINAC ISLAND	D	0	0	0	0	20	148	151	172	91	0	0	0	582
	E	0	0	0	0	18	159	252	196	95	0	0	0	720
	T	0	0	0	0	38	307	403	368	186	0	0	0	1302
MANISTEE	D	0	0	0	0	0	0	0	0	0	7	38	27	72
	E	0	0	0	0	0	0	0	0	0	16	43	38	97
	T	0	0	0	0	0	0	0	0	0	23	81	65	169
MARQUETTE	D	2959	2681	4245	4114	3105	3057	3523	3081	2547	2656	2244	2827	37039
	E	2957	3092	4199	3196	3235	2848	3431	3261	2669	3324	2808	3151	38171
	T	5916	5773	8444	7310	6340	5905	6954	6342	5216	5980	5052	5978	75210
MENOMINEE	D	106	101	126	147	89	102	125	104	69	23	28	42	1062
	E	132	110	137	113	101	120	105	98	36	34	37	33	1056
	T	238	211	263	260	190	222	230	202	105	57	65	75	2118
MUSKEGON	D	3230	3179	3480	3405	3148	3914	4265	4477	3116	3493	3316	3291	42314
	E	3713	3331	3794	3241	3306	3842	4112	4737	3550	3730	3404	3708	44468
	T	6943	6510	7274	6646	6454	7756	8377	9214	6666	7223	6720	6999	86782
PELLSTON	D	586	651	671	512	984	1868	3113	2998	1723	1041	588	946	15681
	E	597	727	655	445	830	1664	2864	2918	1352	1159	609	920	14740
	T	1183	1378	1326	957	1814	3532	5977	5916	3075	2200	1197	1866	30421
SAGINAW	D	11995	11387	19616	19163	17201	14162	16451	17221	14139	16719	14030	16655	188739
	E	12571	13044	19336	18616	16110	14538	16851	17344	14978	16493	14385	17715	191981
	T	24566	24431	38952	37779	33311	28700	33302	34565	29117	33212	28415	34370	380720
SAULT STE. MARIE	D	267	286	269	388	475	441	608	665	444	488	352	377	5060
	E	280	307	312	365	459	423	533	739	477	425	327	370	5017
	T	547	593	581	753	934	864	1141	1404	921	913	679	747	10077
TRAVERSE CITY	D	4237	4175	5444	6373	5918	7919	10139	10855	5938	5444	4167	4849	75458
	E	4416	4675	5462	5376	5352	7041	9806	11429	6424	5584	4127	4848	74540
	T	8653	8850	10906	11749	11270	14960	19945	22284	12362	11028	8294	9697	149998
T O T A L	D	567189	538282	760375	789810	831188	860812	853254	881372	708084	773088	709248	785934	9058636
	E	561301	576922	760196	766858	821500	867672	840630	885200	719834	784574	720691	824135	9129513
	T	1128490	1115204	1520571	1556668	1652688	1728484	1693884	1766572	1427918	1557662	1429939	1610069	18188149

Notes: D = Passengers Deplaned
E = Passengers Enplaned
T = Total Passengers

Table 4

DEPLANED, ENPLANED AND TOTAL MAIL AT AIR CARRIER AIRPORTS IN POUNDS: 1984 VS. 1985

LOCATION		1984	1985	% CHANGE
ALPENA	D	0	35	
	E	0	458	
	T	0	493	
BATTLE CREEK	D	0	0	
	E	0	0	
	T	0	0	
BENTON HARBOR	D	0	0	
	E	0	5507	
	T	0	5507	
DETROIT CITY	D	0	0	
	E	0	0	
	T	0	0	
DETROIT METRO	D	42796010	44859215	4.8%
	E	48832620	45731697	-6.4%
	T	91628630	90590912	-1.1%
ESCANABA	D	1712	0	-100.0%
	E	13271	14176	6.8%
	T	14983	14176	-5.4%
FLINT	D	32618	35403	8.5%
	E	106250	940298	785.0%
	T	138868	975701	602.6%
GRAND RAPIDS	D	8594796	9909467	15.3%
	E	654249	2950764	351.0%
	T	9249045	12860231	39.0%
HOUGHTON/HANCOCK	D	5090	2253	-55.7%
	E	6607	3008	-54.5%
	T	11697	5261	-55.0%
IRON MOUNTAIN	D	9384	4462	-52.5%
	E	18237	19810	8.6%
	T	27621	24272	-12.1%
IRONWOOD	D	0	0	
	E	0	140	
	T	0	140	
JACKSON	D	0	0	
	E	0	0	
	T	0	0	

cont.

LOCATION		1984	1985	% CHANGE
KALAMAZOO	D	134902	55576	-58.8%
	E	196156	647456	230.1%
	T	331058	703032	112.4%
LANSING	D	162675	116656	-28.3%
	E	718969	1295066	80.1%
	T	881644	1411722	60.1%
MACKINAC ISLAND	D	0	0	
	E	0	0	
	T	0	0	
MANISTEE	D	0	0	
	E	0	0	
	T	0	0	
MARQUETTE	D	352	2	-99.4%
	E	69	1115	1515.9%
	T	421	1117	165.3%
MENOMINEE	D	0	0	
	E	0	0	
	T	0	0	
MUSKEGON	D	0	0	
	E	0	0	
	T	0	0	
PELLSTON	D	117	0	-100.0%
	E	467	369	-21.0%
	T	584	369	-36.8%
SAGINAW	D	77209	85477	10.7%
	E	48711	276077	466.8%
	T	125920	361554	187.1%
SAULT STE. MARIE	D	3189	1942	-39.1%
	E	1914	2719	42.1%
	T	5103	4661	-8.7%
TRAVERSE CITY	D	20774	5873	-71.7%
	E	12579	8583	-31.8%
	T	33353	14456	-56.7%
TOTAL	D	51838828	55076361	6.2%
	E	50610099	51897243	2.5%
	T	102448927	106973604	4.4%

SOURCE: MICHIGAN DEPARTMENT OF TRANSPORTATION, AVIATION PLANNING UNIT.

NOTES: D = DEPLANED MAIL
E = EXPLANED MAIL
T = TOTAL MAIL

Figure 3

MICHIGAN AIRMAIL STATISTICS
1985
(POUNDS)

CITY	#	JAN	FEB	MAR	APR	MAY	JUN	JUL	AUG	SEP	OCT	NOV	DEC	TOT
ALPENA	D	0	0	0	0	0	0	0	0	0	25	3	7	35
	E	0	0	0	0	0	0	0	0	22	96	156	184	458
	T	0	0	0	0	0	0	0	0	22	121	159	191	493
BATTLE CREEK	D	0	0	0	0	0	0	0	0	0	0	0	0	0
	E	0	0	0	0	0	0	0	0	0	0	0	0	0
	T	0	0	0	0	0	0	0	0	0	0	0	0	0
BENTON HARBOR	D	0	0	0	0	0	0	0	0	0	0	0	0	0
	E	0	0	0	143	594	640	538	599	1288	503	631	571	5507
	T	0	0	0	143	594	640	538	599	1288	503	631	571	5507
DETROIT - CITY	D	0	0	0	0	0	0	0	0	0	0	0	0	0
	E	0	0	0	0	0	0	0	0	0	0	0	0	0
	T	0	0	0	0	0	0	0	0	0	0	0	0	0
DETROIT - METRO	D	4705491	3957391	3692296	3344348	3578465	3438062	3200290	3454319	3044654	3798263	3393867	5251769	44859215
	E	5409801	4309384	3895928	3426761	3616546	3422080	3099538	3395039	3234954	3817933	3634178	4469555	45731697
	T	10115292	8266775	7588224	6771109	7195011	6860142	6299828	6849358	6279608	7616196	7028045	9721324	90590912
ESCANABA	D	0	0	0	0	0	0	0	0	0	0	0	0	0
	E	905	632	960	1012	1035	1069	1437	1026	1152	1229	1250	2469	14176
	T	905	632	960	1012	1035	1069	1437	1026	1152	1229	1250	2469	14176
FLINT	D	2130	2509	1809	3434	3435	3175	3997	1015	2432	5391	2670	3406	35403
	E	18034	39723	104284	79352	85028	81850	81862	86896	81757	95978	85065	100469	940298
	T	20164	42232	106093	82786	88463	85025	85859	87911	84189	101369	87735	103875	975701
GRAND RAPIDS	D	597696	753656	949518	767273	750689	819331	779251	847262	787409	914620	843971	1098791	9909467
	E	156533	196261	298132	280237	301886	255515	242406	266842	219934	181498	189728	361792	2950764
	T	754229	949917	1247650	1047510	1052575	1074846	1021657	1114104	1007343	1096118	1033699	1460583	12860231
HOUGHTON/HANCOCK	D	1156	483	614	0	0	0	0	0	0	0	0	0	2253
	E	439	1076	245	170	52	58	204	187	200	138	81	158	3008
	T	1595	1559	859	170	52	58	204	187	200	138	81	158	5261

cont.

CITY	*	JAN	FEB	MAR	APR	MAY	JUN	JUL	AUG	SEP	OCT	NOV	DEC	TOT
IRON MOUNTAIN	D	648	179	1890	0	40	313	493	822	71	5	1	0	4462
	E	1725	1548	724	3011	1334	1599	1575	1461	1254	1321	1084	3174	19810
	T	2373	1727	2614	3011	1374	1912	2068	2283	1325	1326	1085	3174	24272
IRONWOOD	D	0	0	0	0	0	0	0	0	0	0	0	0	0
	E	0	0	0	0	0	0	0	0	0	0	72	68	140
	T	0	0	0	0	0	0	0	0	0	0	72	68	140
JACKSON	D	0	0	0	0	0	0	0	0	0	0	0	0	0
	E	0	0	0	0	0	0	0	0	0	0	0	0	0
	T	0	0	0	0	0	0	0	0	0	0	0	0	0
KALAMAZOO	D	6388	4486	5880	5831	5120	3409	3958	3765	4034	3942	3377	5386	55576
	E	12846	11440	11284	10514	53336	91762	82914	101593	77957	82311	53574	57925	647456
	T	19234	15926	17164	16345	58456	95171	86872	105358	81991	86253	56951	63311	703032
LANSING	D	11090	6411	5110	3584	6674	4107	1223	1524	1953	1741	4916	68323	116656
	E	3584	35960	61420	80431	95418	109829	116764	131893	152172	189797	168970	148828	1295066
	T	14674	42371	66530	84015	102092	113936	117987	133417	154125	191538	173886	217151	1411722
MACKINAC ISLAND	D	0	0	0	0	0	0	0	0	0	0	0	0	0
	E	0	0	0	0	0	0	0	0	0	0	0	0	0
	T	0	0	0	0	0	0	0	0	0	0	0	0	0
MANISTEE	D	0	0	0	0	0	0	0	0	0	0	0	0	0
	E	0	0	0	0	0	0	0	0	0	0	0	0	0
	T	0	0	0	0	0	0	0	0	0	0	0	0	0
MARQUETTE	D	0	0	2	0	0	0	0	0	0	0	0	0	2
	E	0	0	3	0	0	0	173	158	65	291	248	177	1115
	T	0	0	5	0	0	0	173	158	65	291	248	177	1117
MEMPHINEE	D	0	0	0	0	0	0	0	0	0	0	0	0	0
	E	0	0	0	0	0	0	0	0	0	0	0	0	0
	T	0	0	0	0	0	0	0	0	0	0	0	0	0

cont.

CITY	*	JAN	FEB	MAR	APR	MAY	JUN	JUL	AUG	SEP	OCT	NOV	DEC	TOT
MUSKEGON	D	0	0	0	0	0	0	0	0	0	0	0	0	0
	E	0	0	0	0	0	0	0	0	0	0	0	0	0
	T	0	0	0	0	0	0	0	0	0	0	0	0	0
PELLSTON	D	0	0	0	0	0	0	0	0	0	0	0	0	0
	E	0	0	0	0	0	0	0	0	0	79	127	163	369
	T	0	0	0	0	0	0	0	0	0	79	127	163	369
SAGINAW	D	31617	1833	3058	2327	3020	3546	7622	4247	3386	4076	1606	19139	85477
	E	3045	36168	41870	42507	34846	34496	28381	21501	17881	7314	4708	3360	276077
	T	34662	38001	44928	44834	37866	38042	36003	25748	21267	11390	6314	22499	361554
SAULT STE. MARIE	D	270	532	373	0	0	0	0	319	0	193	255	0	1942
	E	221	29	251	234	275	200	299	258	140	320	222	270	2719
	T	491	561	624	234	275	200	299	577	140	513	477	270	4661
TRAVERSE CITY	D	346	488	652	519	174	707	572	582	505	505	459	364	5873
	E	688	554	813	854	1098	934	1309	1156	534	251	294	98	8583
	T	1034	1042	1465	1373	1272	1641	1881	1738	1039	756	753	462	14456
T O T A L	D	5356832	4727968	4661202	4127316	4347617	4272650	3997406	4313855	3844444	4728761	4251125	6447185	55076361
	E	5607821	4632775	4415914	3925226	4191448	4000032	3657400	4008609	3789310	4379059	4140388	5149261	51897243
	T	10964653	9360743	9077116	8052542	8539065	8272682	7654806	8322464	7633754	9107820	8391513	11596446	106973604

NOTES: D = Deplaned
E = Enplaned
T = Total

SOURCE: Michigan Department of Transportation, Aviation Planning Unit

Table 5

DEPLANED, ENPLANED AND TOTAL CARGO AT AIR CARRIER AIRPORTS IN TONS: 1984 VS. 1985

LOCATION		1984	1985	% CHANGE
ALPENA	D	6.2	4.8	-22.6%
	E	2.4	1.6	-33.3%
	T	8.6	6.4	-25.6%
BATTLE CREEK	D	141.1	55.2	-60.9%
	E	35.9	25.0	-30.4%
	T	177.0	80.2	-54.7%
BENTON HARBOR	D	6.4	14.3	123.4%
	E	4.1	2.9	-29.3%
	T	10.5	17.2	63.8%
DETROIT CITY	D	45.9	40.8	-11.1%
	E	57.3	25.7	-55.1%
	T	103.2	66.5	-35.6%
DETROIT METRO	D	52622.9	49471.8	-6.0%
	E	51674.5	58354.2	12.9%
	T	104297.4	107826.0	3.4%
ESCANADA	D	13.6	14.8	8.8%
	E	16.0	10.5	-34.4%
	T	29.6	25.3	-14.5%
FLINT	D	165.3	167.4	1.3%
	E	44.6	27.6	-38.1%
	T	209.9	195.0	-7.1%
GRAND RAPIDS	D	3380.2	4176.4	23.6%
	E	3261.7	4549.6	39.5%
	T	6641.9	8726.0	31.4%
HOUGHTON/HANCOCK	D	32.1	23.0	-28.3%
	E	28.8	24.0	-16.7%
	T	60.9	47.0	-22.8%
IRON MOUNTAIN	D	11.9	9.7	-18.5%
	E	5.8	2.0	-65.5%
	T	17.7	11.7	-33.9%
IRONWOOD	D	4.4	2.8	-36.4%
	E	1.2	0.1	-91.7%
	T	5.6	2.9	-48.2%
JACKSON	D	2.6	2.5	-3.8%
	E	2.0	1.0	-50.0%
	T	4.6	3.5	-23.9%

cont.

LOCATION		1984	1985	% CHANGE
KALAMAZOO	D	208.3	250.6	20.3%
	E	144.0	100.9	-29.9%
	T	352.3	351.5	-0.2%
LANSING	D	292.9	241.6	-17.5%
	E	131.1	102.1	-22.1%
	T	424.0	343.7	-18.9%
MACKINAC ISLAND	D	0.1	0.2	100.0%
	E	0.0	0.0	0.0%
	T	0.1	0.2	100.0%
MANISTEE	D	0.7	0.0	-100.0%
	E	0.0	0.1	0.0%
	T	0.7	0.1	-85.7%
MARQUETTE	D	173.8	106.8	-38.6%
	E	29.3	37.3	27.3%
	T	203.1	144.1	-29.0%
MENOMINEE	D	1.9	0.7	-63.2%
	E	1.1	0.2	-81.8%
	T	3.0	0.9	-70.0%
MUSKEGON	D	31.3	26.1	-16.6%
	E	21.5	25.1	16.7%
	T	52.8	51.2	-3.0%
PELLSTON	D	64.9	21.6	-66.7%
	E	54.0	17.0	-68.5%
	T	118.9	38.6	-67.5%
SAGINAW	D	316.0	329.9	4.4%
	E	139.1	157.7	13.4%
	T	455.1	487.6	7.1%
SAULT STE. MARIE	D	8.0	8.6	7.5%
	E	3.9	2.8	-28.2%
	T	11.9	11.4	-4.2%
TRAVERSE CITY	D	337.9	184.3	-45.5%
	E	127.8	57.4	-55.1%
	T	465.7	241.7	-48.1%
TOTAL	D	57868.4	55153.8	-4.7%
	E	55786.1	63524.8	13.9%
	T	113654.5	118678.6	4.4%

SOURCE: MICHIGAN DEPARTMENT OF TRANSPORTATION, AVIATION PLANNING UNIT.

NOTES: D = DEPLANED CARGO
E = ENPLANED CARGO
T = TOTAL CARGO

Figure 4

MICHIGAN AIR CARGO STATISTICS
1985
(TONS)

CITY	*	JAN	FEB	MAR	APR	MAY	JUN	JUL	AUG	SEP	OCT	NOV	DEC	TOT
ALPENA	D	0.5	0.7	0.3	0.2	0.4	0.4	0.4	0.3	0.8	0.3	0.4	0.1	4.8
	E	0.1	0.2	0.1	0.3	0.1	0.1	0.3	0.1	0.2	0.1	0.0	0.0	1.6
	T	0.6	0.9	0.4	0.5	0.5	0.5	0.7	0.4	1.0	0.4	0.4	0.1	6.4
BATTLE CREEK	D	7.3	7.5	4.8	7.0	3.4	7.6	4.1	3.2	2.7	2.3	2.6	2.7	55.2
	E	2.3	3.0	3.6	2.7	2.3	2.4	2.4	1.9	1.5	2.4	0.1	0.4	25.0
	T	9.6	10.5	8.4	9.7	5.7	10.0	6.5	5.1	4.2	4.7	2.7	3.1	80.2
BENTON HARBOR	D	0.1	0.2	0.3	1.0	0.4	0.3	1.7	2.5	3.7	2.6	1.2	0.3	14.3
	E	0.4	0.1	0.3	0.2	0.2	0.1	0.1	0.6	0.5	0.1	0.1	0.2	2.9
	T	0.5	0.3	0.6	1.2	0.6	0.4	1.8	3.1	4.2	2.7	1.3	0.5	17.2
DETROIT - CITY	D	4.4	2.1	5.3	5.6	4.8	4.6	2.6	1.8	6.7	2.9	0.0	0.0	40.8
	E	3.5	3.5	2.2	2.7	3.5	3.4	2.0	1.3	1.8	1.8	0.0	0.0	25.7
	T	7.9	5.6	7.5	8.3	8.3	8.0	4.6	3.1	8.5	4.7	0.0	0.0	66.5
DETROIT - METRO	D	4340.2	4380.4	4163.8	3970.8	3924.6	3800.5	3841.8	4237.6	3802.2	4665.3	4658.2	3686.4	49471.8
	E	4743.7	5127.5	5112.6	5131.7	4904.0	5100.7	5903.0	4283.6	4482.4	4661.2	4414.4	4489.4	58354.2
	T	9083.9	9507.9	9276.4	9102.5	8828.6	8901.2	9744.8	8521.2	8284.6	9326.5	9072.6	8175.8	107826.0
ESCANABA	D	1.5	1.0	0.8	0.8	1.4	1.1	1.2	1.6	1.8	1.9	1.0	0.7	14.8
	E	0.8	1.0	0.9	0.4	0.7	1.4	0.9	1.6	0.5	1.0	0.2	1.1	10.5
	T	2.3	2.0	1.7	1.2	2.1	2.5	2.1	3.2	2.3	2.9	1.2	1.8	25.3
FLINT	D	11.2	17.4	17.3	13.9	19.5	10.4	12.1	14.3	15.8	12.4	11.5	11.6	167.4
	E	2.2	1.2	2.4	2.8	2.1	3.0	2.7	2.4	3.6	2.1	1.4	1.7	27.6
	T	13.4	18.6	19.7	16.7	21.6	13.4	14.8	16.7	19.4	14.5	12.9	13.3	195.0
GRAND RAPIDS	D	302.3	305.2	367.4	364.8	407.6	291.1	270.6	375.2	327.5	441.4	427.0	296.3	4176.4
	E	373.7	349.3	357.2	405.5	373.0	294.1	279.7	441.2	459.6	457.8	443.6	314.9	4549.6
	T	676.0	654.5	724.6	770.3	780.6	585.2	550.3	816.4	787.1	899.2	870.6	611.2	8726.0
HOUGHTON/HANCOCK	D	3.5	2.3	2.7	1.3	2.8	1.4	1.6	1.8	1.6	1.2	1.6	1.2	23.0
	E	2.1	2.1	2.4	2.0	2.1	1.5	3.1	2.1	2.1	2.3	1.3	0.9	24.0
	T	5.6	4.4	5.1	3.3	4.9	2.9	4.7	3.9	3.7	3.5	2.9	2.1	47.0
IRON MOUNTAIN	D	0.4	1.1	0.6	0.8	1.6	0.4	1.1	1.1	1.0	0.7	0.7	0.2	9.7
	E	0.1	0.0	0.2	0.4	0.2	0.5	0.1	0.2	0.2	0.1	0.0	0.0	2.0
	T	0.5	1.1	0.8	1.2	1.8	0.9	1.2	1.3	1.2	0.8	0.7	0.2	11.7
IRONWOOD	D	0.3	0.6	0.1	0.2	0.1	0.3	0.2	0.4	0.1	0.3	0.1	0.1	2.8
	E	0.1	0.0	0.0	0.0	0.0	0.0	0.0	0.0	0.0	0.0	0.0	0.0	0.1
	T	0.4	0.6	0.1	0.2	0.1	0.3	0.2	0.4	0.1	0.3	0.1	0.1	2.9
JACKSON	D	0.0	0.1	0.3	0.2	0.1	0.4	0.4	0.1	0.4	0.3	0.1	0.1	2.5
	E	0.0	0.1	0.1	0.1	0.2	0.1	0.0	0.2	0.0	0.1	0.0	0.1	1.0
	T	0.0	0.2	0.4	0.3	0.3	0.5	0.4	0.3	0.4	0.4	0.1	0.2	3.5

cont.

CITY	*	JAN	FEB	MAR	APR	MAY	JUN	JUL	AUG	SEP	OCT	NOV	DEC	TOT
KALAMAZOO	D	19.5	17.2	19.3	24.6	18.7	23.8	23.5	26.1	19.7	19.2	19.9	19.1	250.6
	E	7.0	6.1	8.2	9.0	9.8	9.7	8.8	7.7	10.9	9.2	7.1	7.4	100.9
	T	26.5	23.3	27.5	33.6	28.5	33.5	32.3	33.8	30.6	28.4	27.0	26.5	351.5
LANSING	D	22.6	29.5	27.3	27.8	16.8	11.1	19.4	17.2	20.9	16.0	13.5	19.5	241.6
	E	7.5	8.5	12.0	10.8	5.5	6.9	8.1	13.7	6.2	7.7	9.7	5.5	102.1
	T	30.1	38.0	39.3	38.6	22.3	18.0	27.5	30.9	27.1	23.7	23.2	25.0	343.7
MACKINAC ISLAND	D	0.0	0.0	0.0	0.0	0.0	0.0	0.1	0.0	0.1	0.0	0.0	0.0	0.2
	E	0.0	0.0	0.0	0.0	0.0	0.0	0.0	0.0	0.0	0.0	0.0	0.0	0.0
	T	0.0	0.0	0.0	0.0	0.0	0.0	0.1	0.0	0.1	0.0	0.0	0.0	0.2
MANISTEE	D	0.0	0.0	0.0	0.0	0.0	0.0	0.0	0.0	0.0	0.0	0.0	0.0	0.0
	E	0.0	0.0	0.0	0.0	0.0	0.0	0.0	0.0	0.0	0.0	0.1	0.0	0.1
	T	0.0	0.0	0.0	0.0	0.0	0.0	0.0	0.0	0.0	0.0	0.1	0.0	0.1
MARQUETTE	D	12.9	13.8	17.7	15.8	1.5	11.3	4.4	4.7	4.9	6.7	6.4	6.7	106.8
	E	2.4	1.9	2.5	2.0	16.5	0.6	0.4	0.4	1.7	3.8	3.3	1.8	37.3
	T	15.3	15.7	20.2	17.8	18.0	11.9	4.8	5.1	6.6	10.5	9.7	8.5	144.1
MENOMINEE	D	0.0	0.1	0.1	0.1	0.1	0.2	0.1	0.0	0.0	0.0	0.0	0.0	0.7
	E	0.0	0.0	0.0	0.0	0.2	0.0	0.0	0.0	0.0	0.0	0.0	0.0	0.2
	T	0.0	0.1	0.1	0.1	0.3	0.2	0.1	0.0	0.0	0.0	0.0	0.0	0.9
MUSKEGON	D	2.2	1.4	1.7	1.9	2.7	2.7	3.0	1.5	1.4	2.5	2.9	2.2	26.1
	E	2.5	1.8	2.0	2.9	2.3	2.3	2.6	3.1	1.6	1.7	0.9	1.4	25.1
	T	4.7	3.2	3.7	4.8	5.0	5.0	5.6	4.6	3.0	4.2	3.8	3.6	51.2
PELLSTON	D	1.2	1.1	1.1	1.1	2.2	3.6	4.5	1.8	2.2	2.0	0.2	0.6	21.6
	E	0.6	0.4	0.4	0.5	1.2	1.1	1.2	3.5	2.8	1.8	1.0	2.5	17.0
	T	1.8	1.5	1.5	1.6	3.4	4.7	5.7	5.3	5.0	3.8	1.2	3.1	38.6
SAGINAW	D	26.2	20.8	26.5	22.8	27.9	29.4	30.5	28.4	35.3	32.5	21.6	27.9	329.8
	E	12.2	10.3	15.1	10.8	11.5	20.1	12.5	13.1	11.6	14.8	12.8	12.9	157.7
	T	38.4	31.1	41.6	33.6	39.4	49.5	43.0	41.5	46.9	47.3	34.4	40.8	487.5
SAULT STE. MARIE	D	1.4	0.5	0.6	0.7	0.7	0.5	0.7	0.6	0.8	1.1	0.4	0.6	8.6
	E	0.1	0.1	0.5	0.1	0.4	0.6	0.1	0.1	0.3	0.4	0.1	0.0	2.8
	T	1.5	0.6	1.1	0.8	1.1	1.1	0.8	0.7	1.1	1.5	0.5	0.6	11.4
TRAVERSE CITY	D	21.0	26.7	20.0	20.1	13.4	12.0	13.8	16.7	12.7	12.3	9.3	6.3	184.3
	E	8.2	10.9	8.3	8.8	2.0	3.5	2.8	3.3	2.9	2.1	3.6	1.0	57.4
	T	29.2	37.6	28.3	28.9	15.4	15.5	16.6	20.0	15.6	14.4	12.9	7.3	241.7
TOTAL	D	4778.7	4829.7	4678.0	4481.5	4450.7	4213.1	4237.8	4736.9	4262.3	5223.9	5178.6	4082.6	55153.8
	E	5169.5	5528.0	5531.0	5593.7	5337.8	5452.1	6230.8	4780.1	4990.4	5170.5	4899.7	4841.2	63524.8
	T	9948.2	10357.7	10209.0	10075.2	9788.5	9665.2	10468.6	9517.0	9252.7	10394.4	10078.3	8923.8	118678.6

NOTES: D = Deplaned
E = Enplaned
T = Total

SOURCE: Michigan Department of Transportation, Aviation Planning Unit

Figure 5

ENPLANEMENTS AT PHELPS COLLINS AIRPORT - ALPENA
1981 - 1985

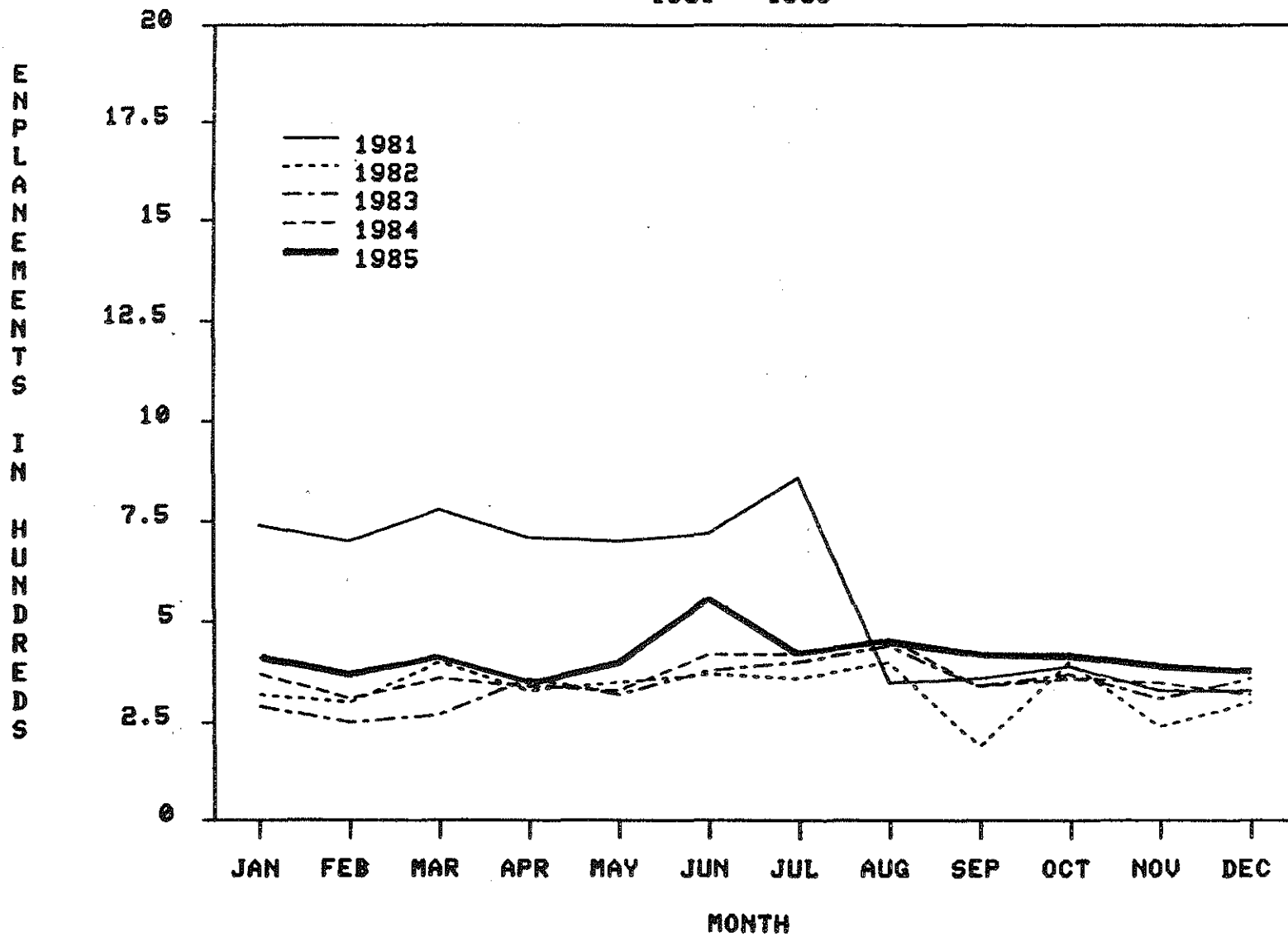


Figure 6

ENPLANEMENTS AT U.K. KELLOGG REG. AIRPORT - BATTLE CREEK
1981 - 1985

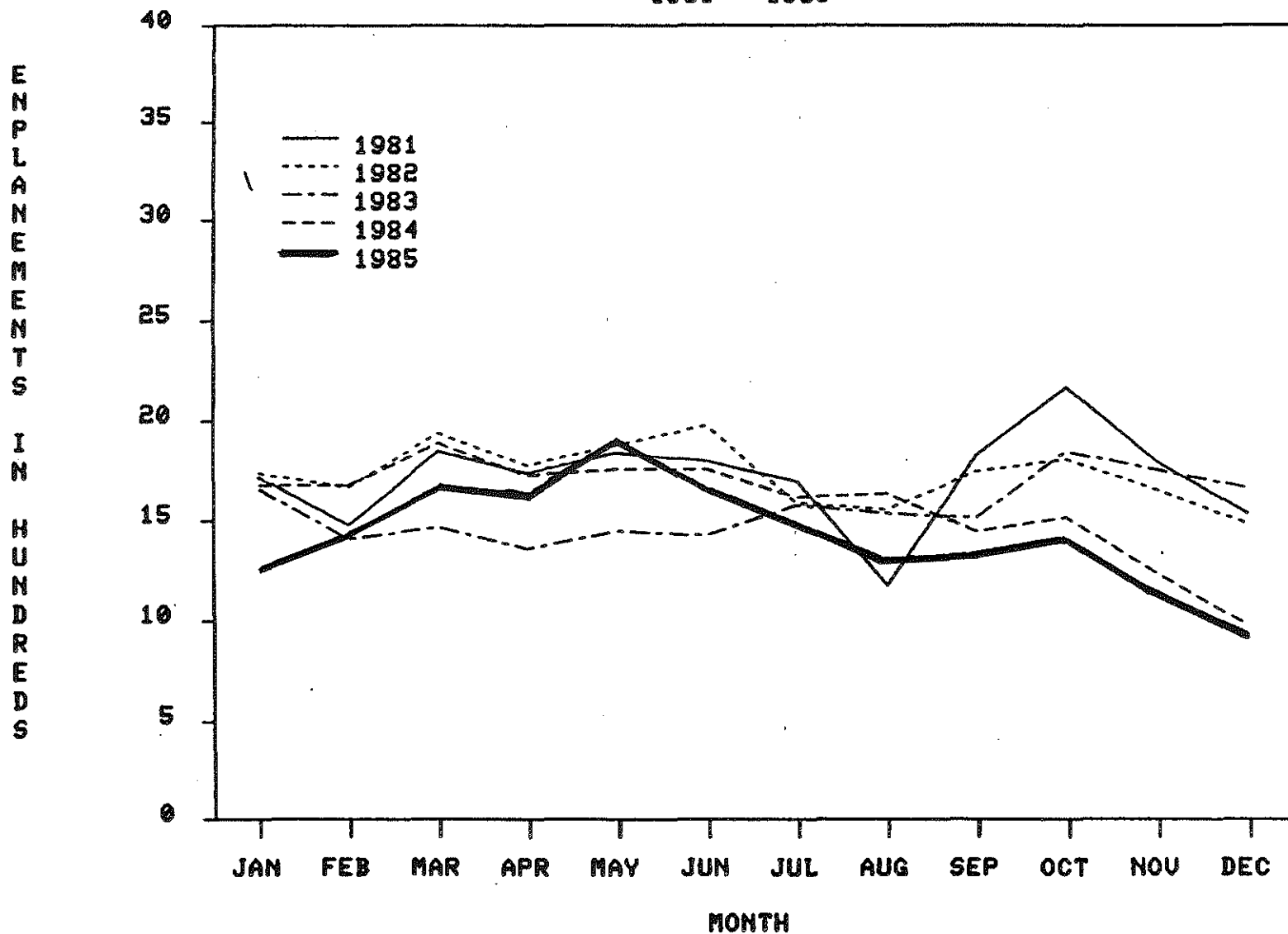


Figure 7

ENPLANEMENTS AT ROSS FIELD - BENTON HARBOR
1981 - 1985

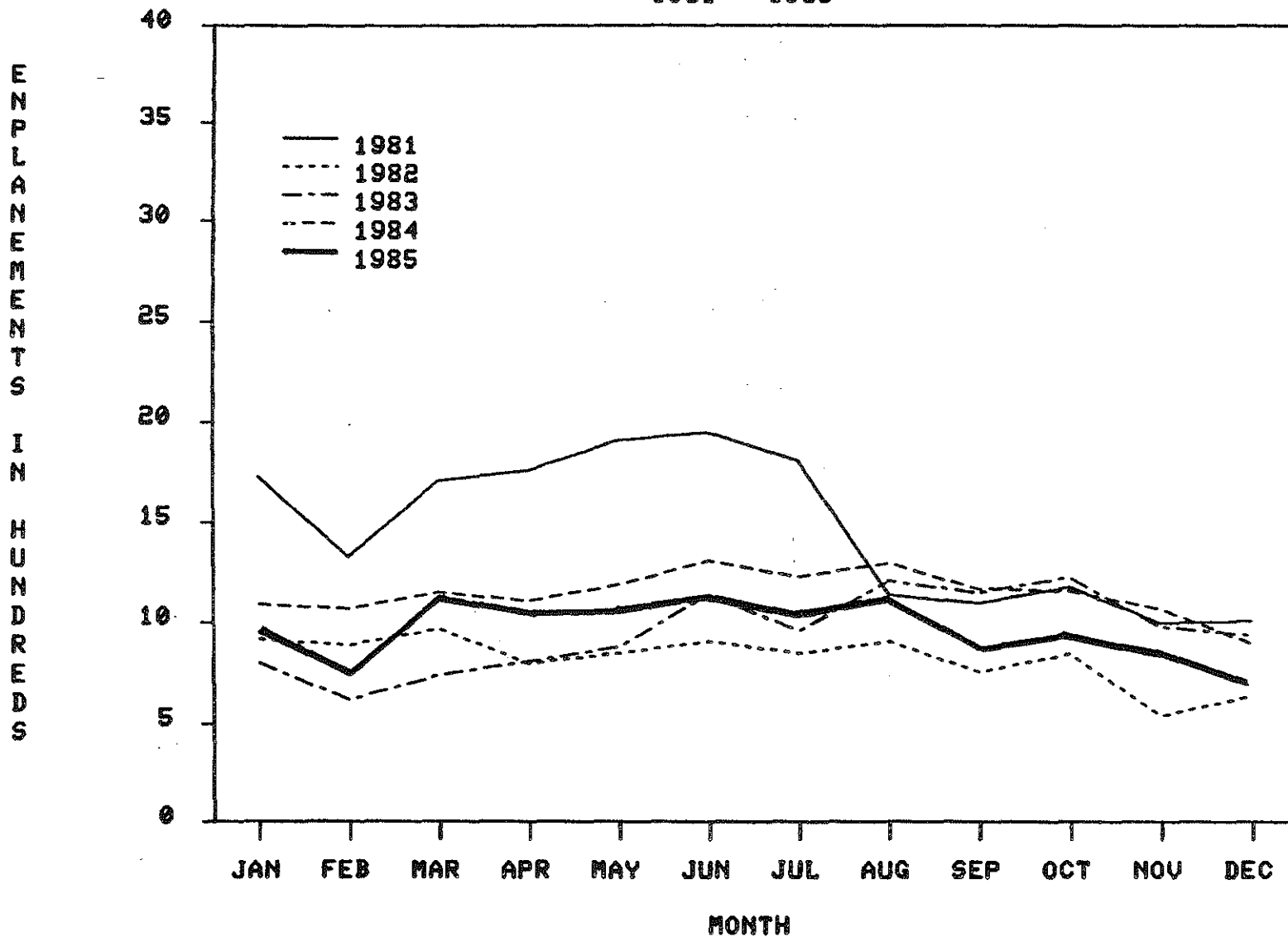


Figure 8

ENPLANEMENTS AT DETROIT CITY AIRPORT
1981 - 1985

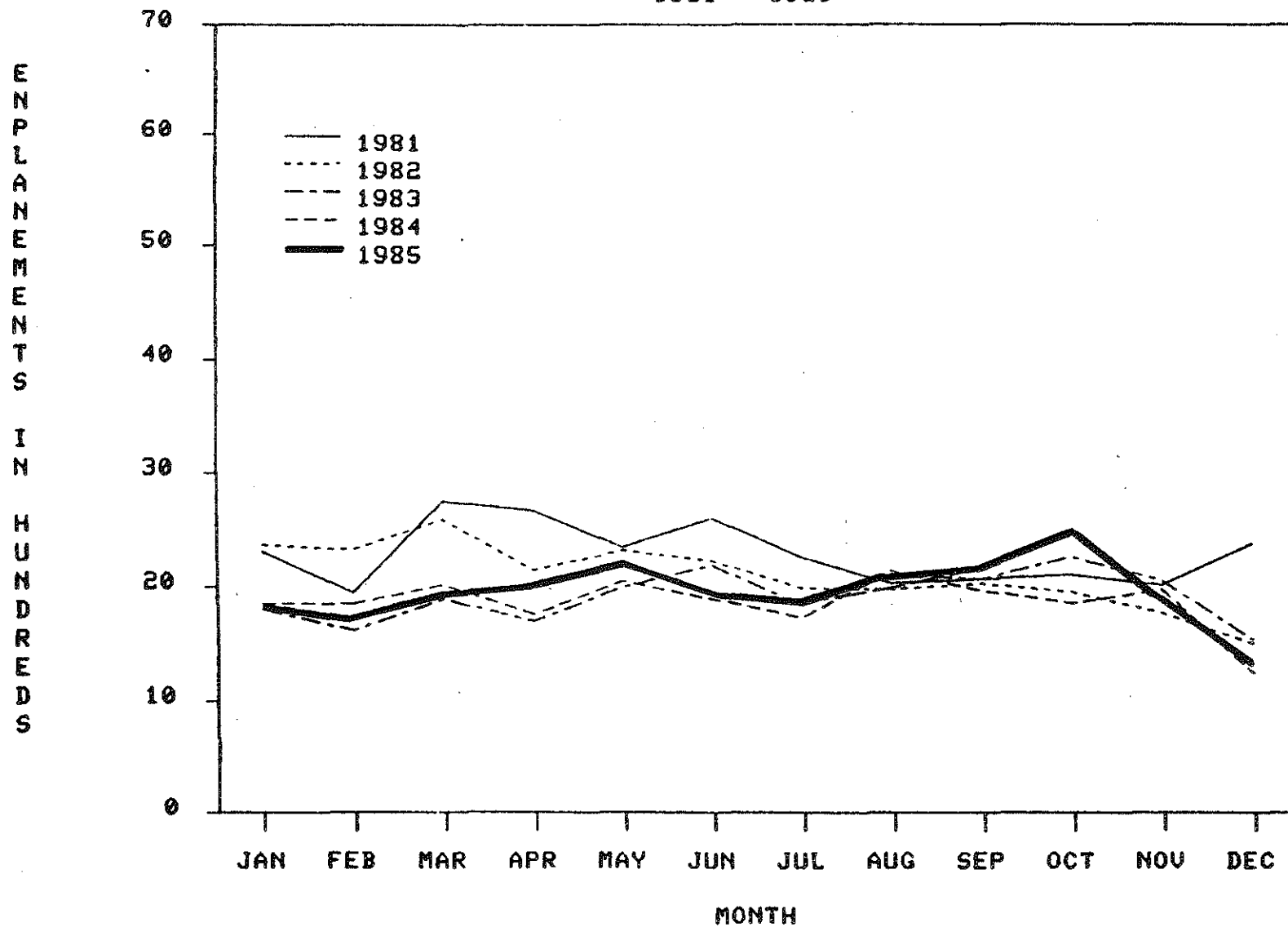


Figure 9

ENPLANEMENTS AT METROPOLITAN AIRPORT - DETROIT
1981 - 1985

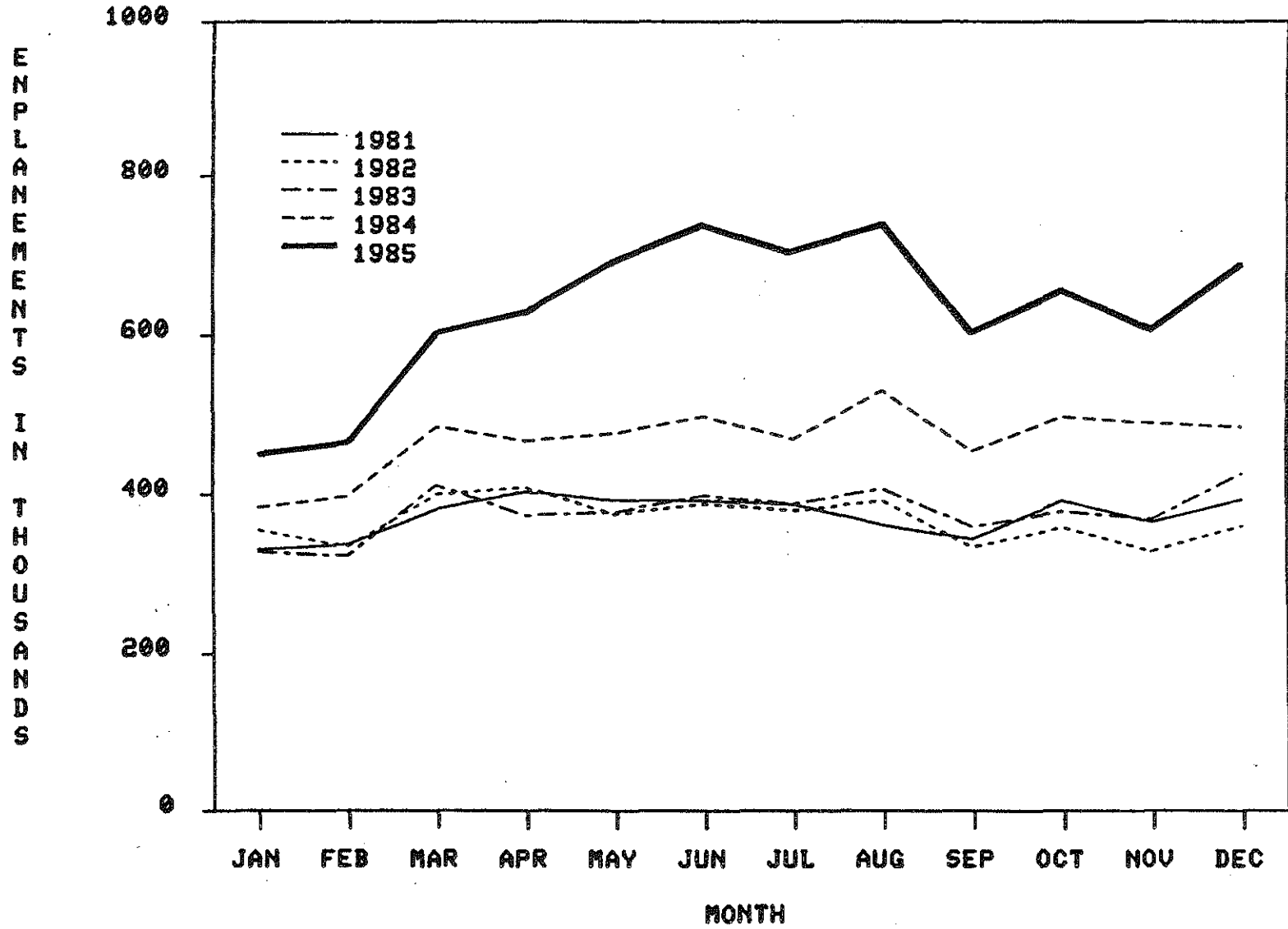


Figure 10

ENPLANEMENTS AT DELTA COUNTY AIRPORT - ESCANABA
1981 - 1985

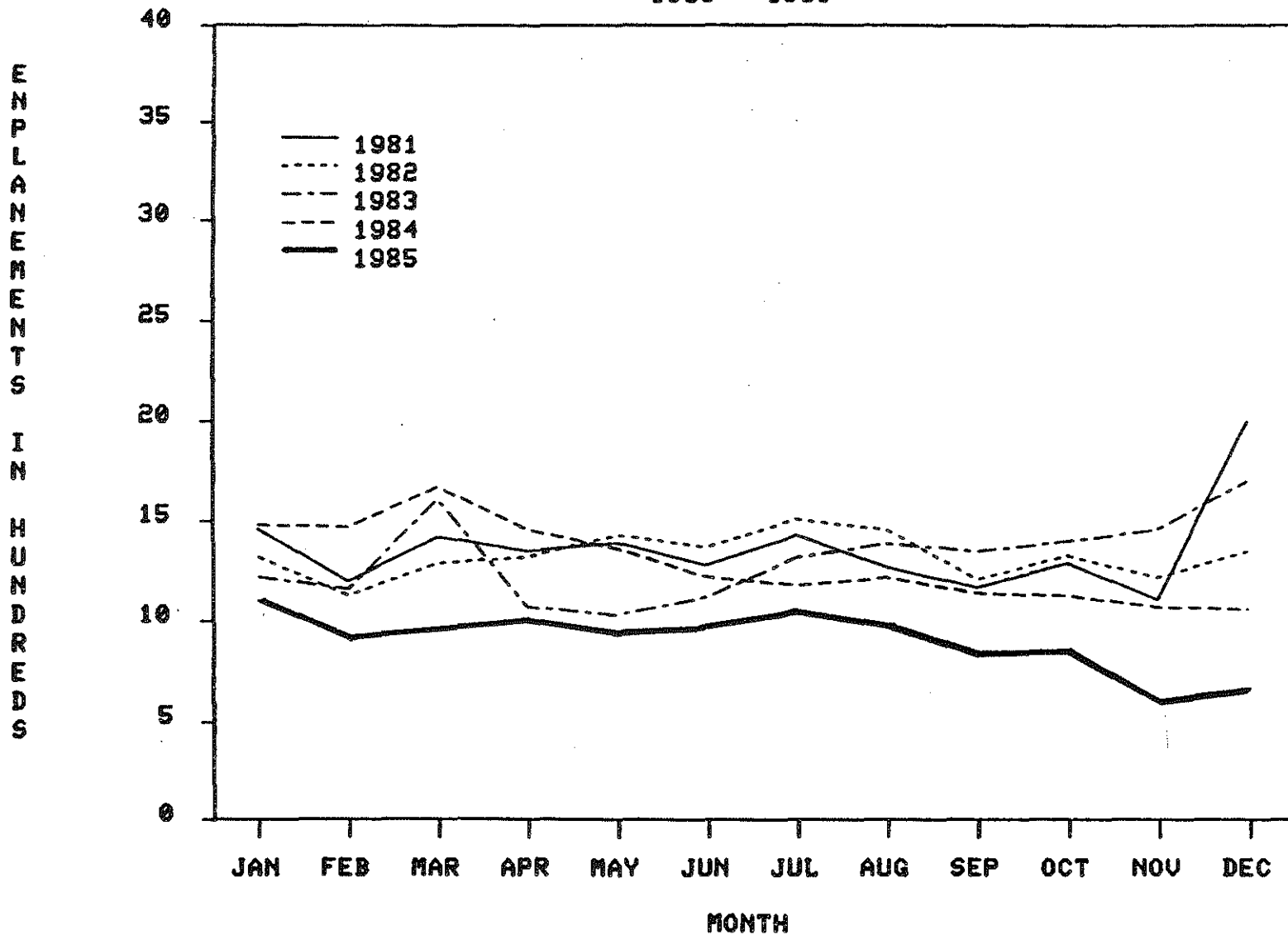


Figure 11

ENPLANEMENTS AT BISHOP AIRPORT - FLINT
1981 - 1985

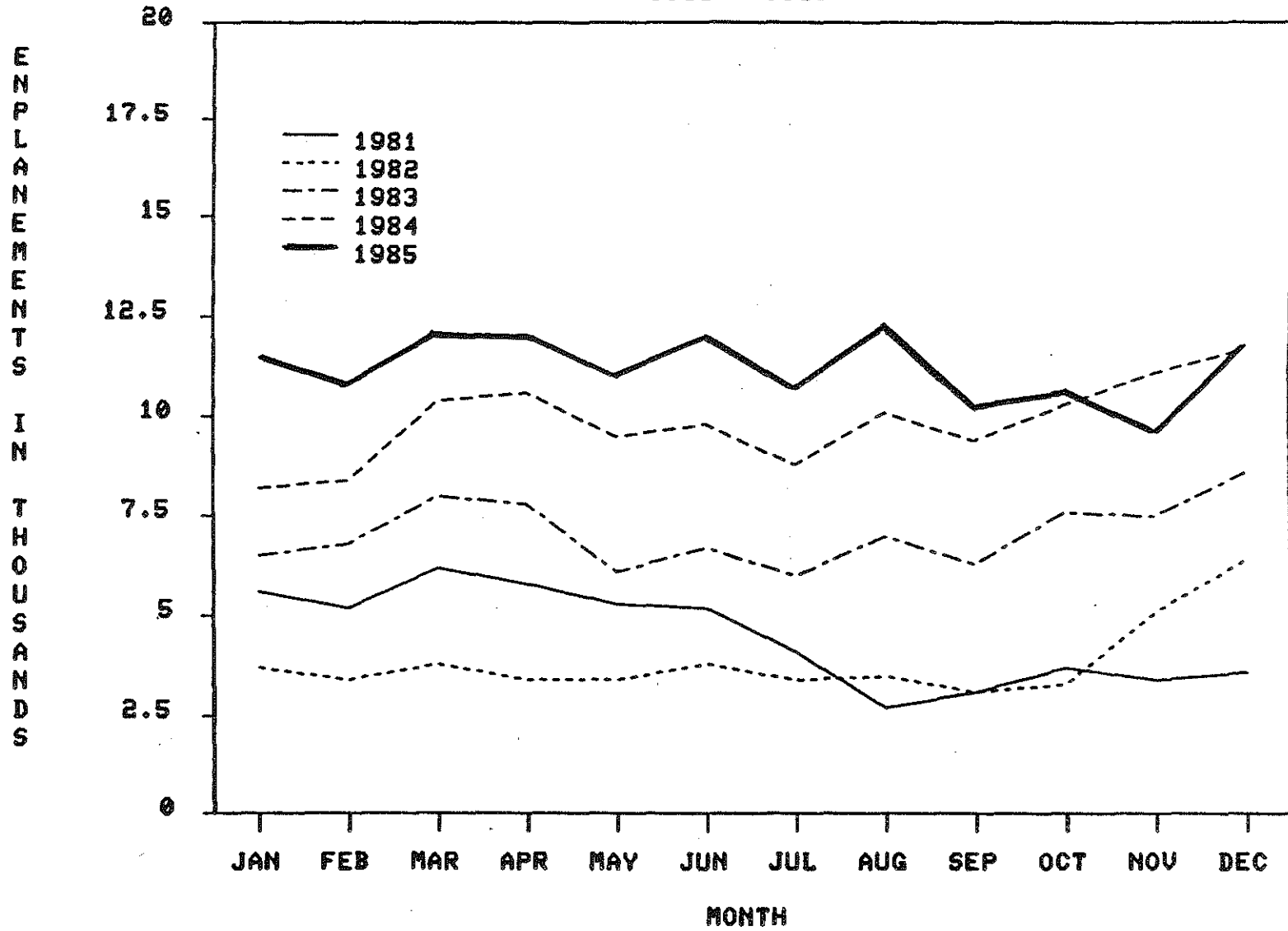


Figure 12

ENPLANEMENTS AT KENT CO. INT'L AIRPORT - GRAND RAPIDS
1981 - 1985

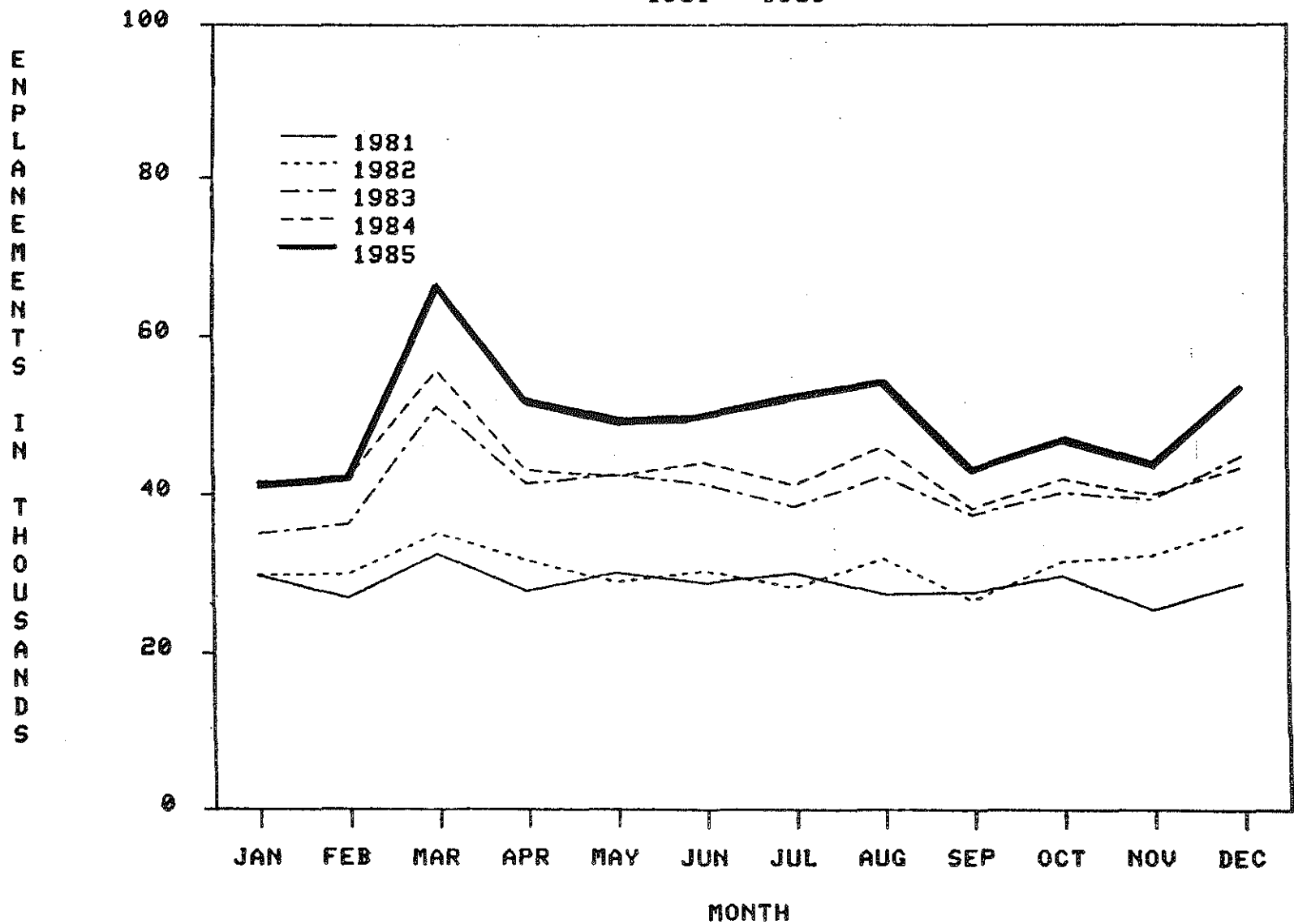


Figure 13

ENPLANEMENTS AT HOUGHTON CO. MEM. AIRPORT - HOUGHTON/HANCOCK
1981 - 1985

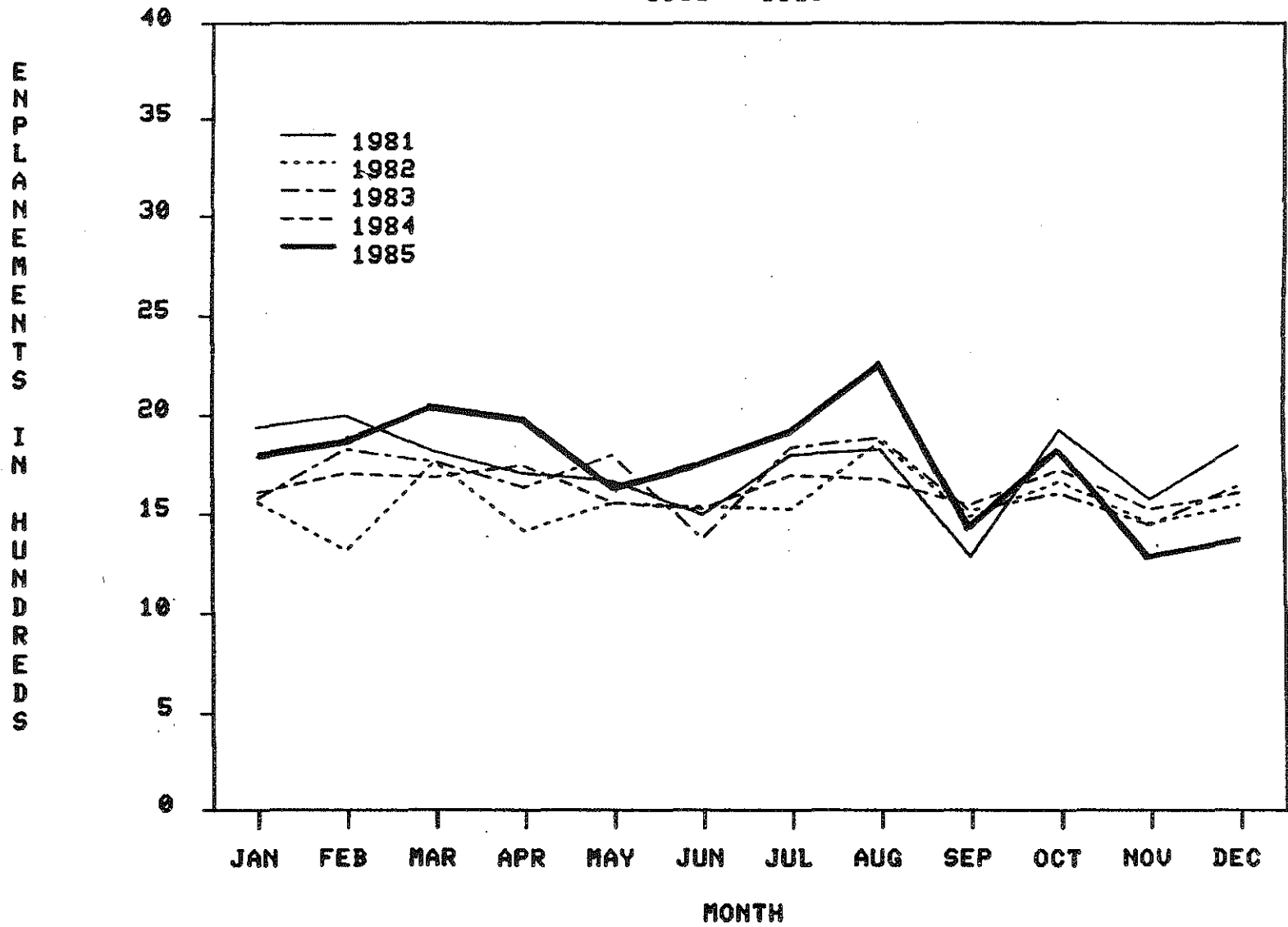


Figure 14

ENPLANEMENTS AT FORD AIRPORT - IRON MOUNTAIN
1981 - 1985

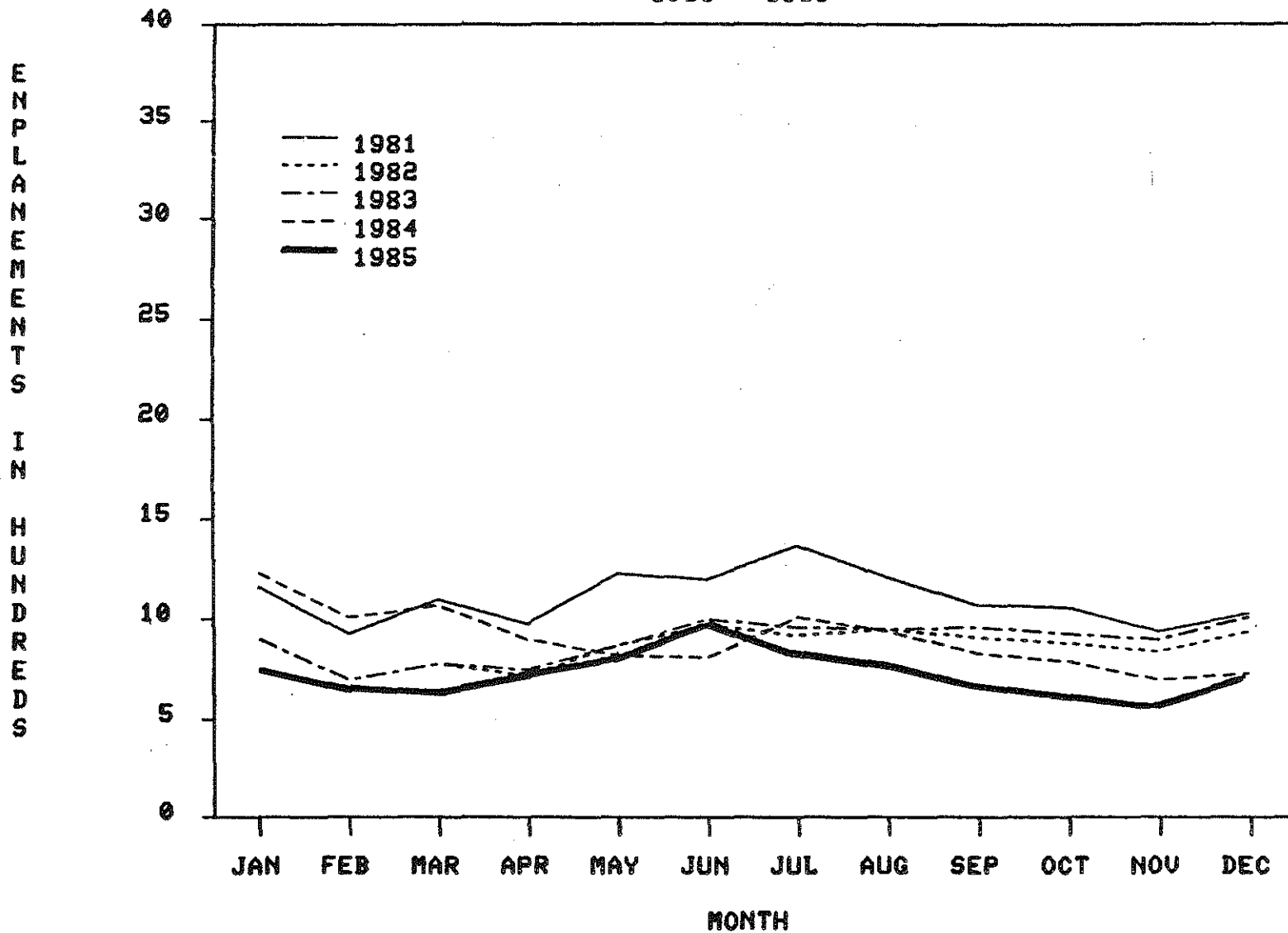


Figure 15

ENPLANEMENTS AT GOGEBIC COUNTY AIRPORT - IRONWOOD
1981 - 1985

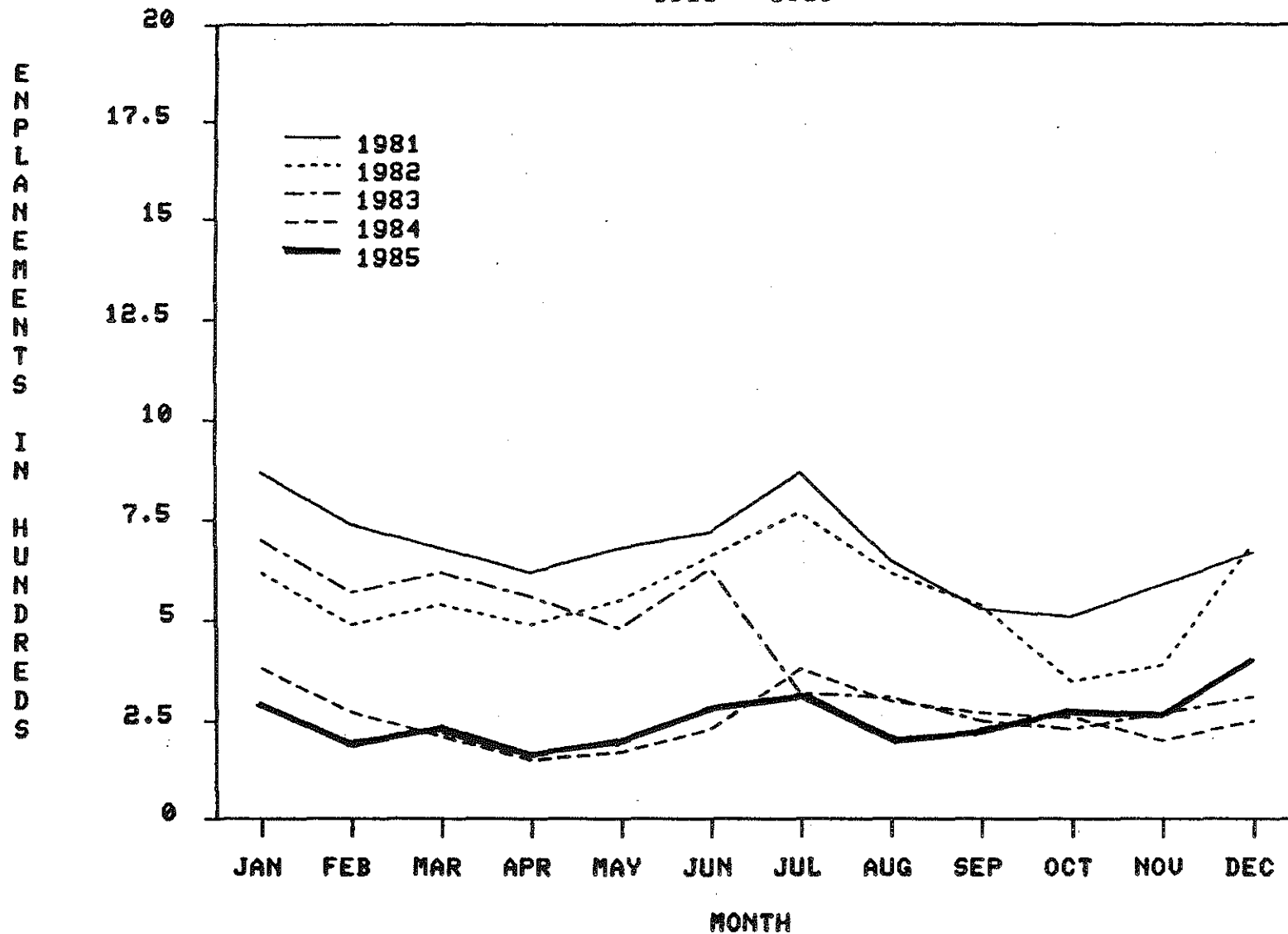


Figure 16

ENPLANEMENTS AT JACKSON CO. REYNOLDS FIELD - JACKSON
1981 - 1985

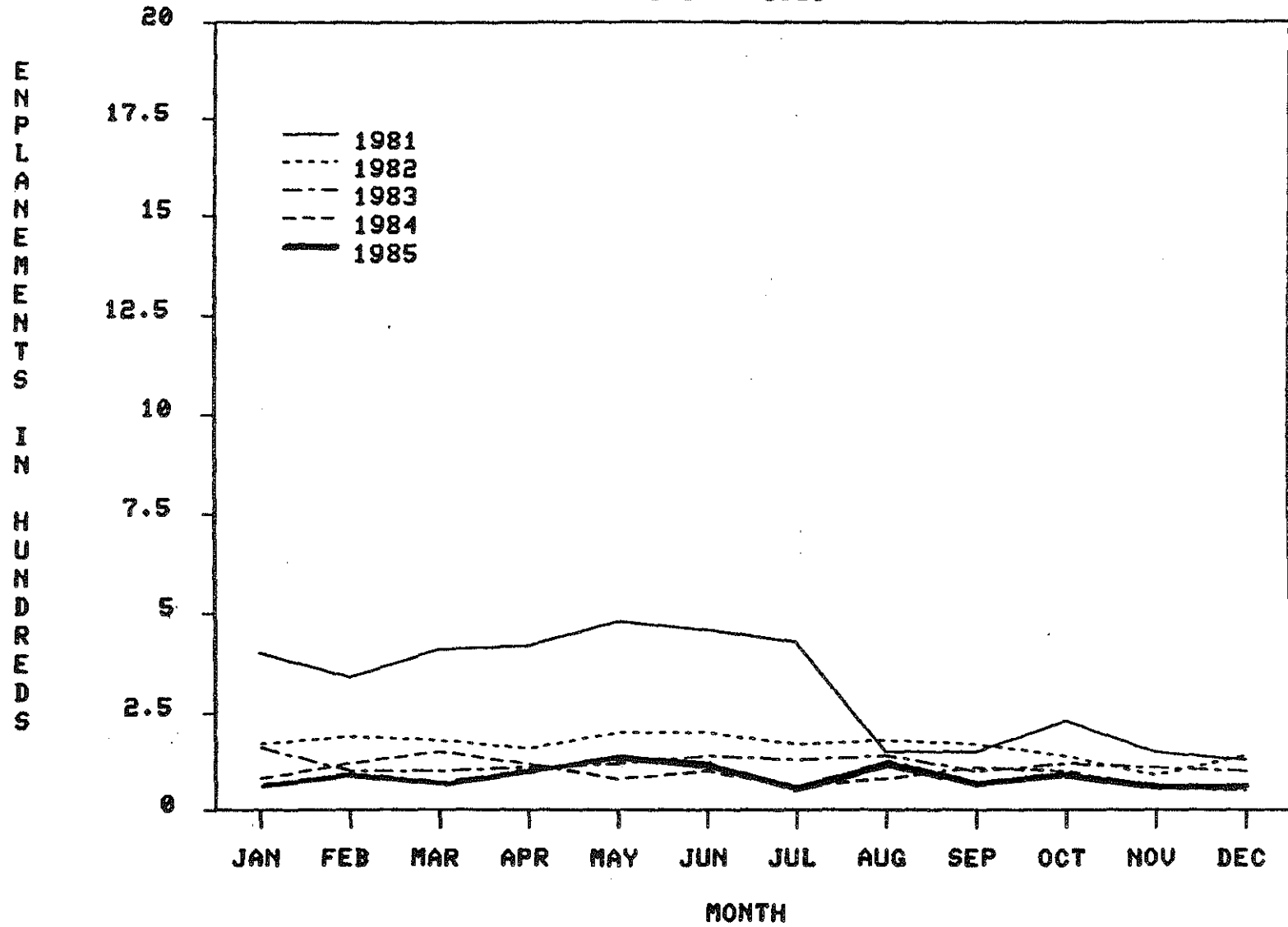


Figure 17

ENPLANEMENTS AT KALAMAZOO MUNICIPAL AIRPORT - KALAMAZOO
1981 - 1985

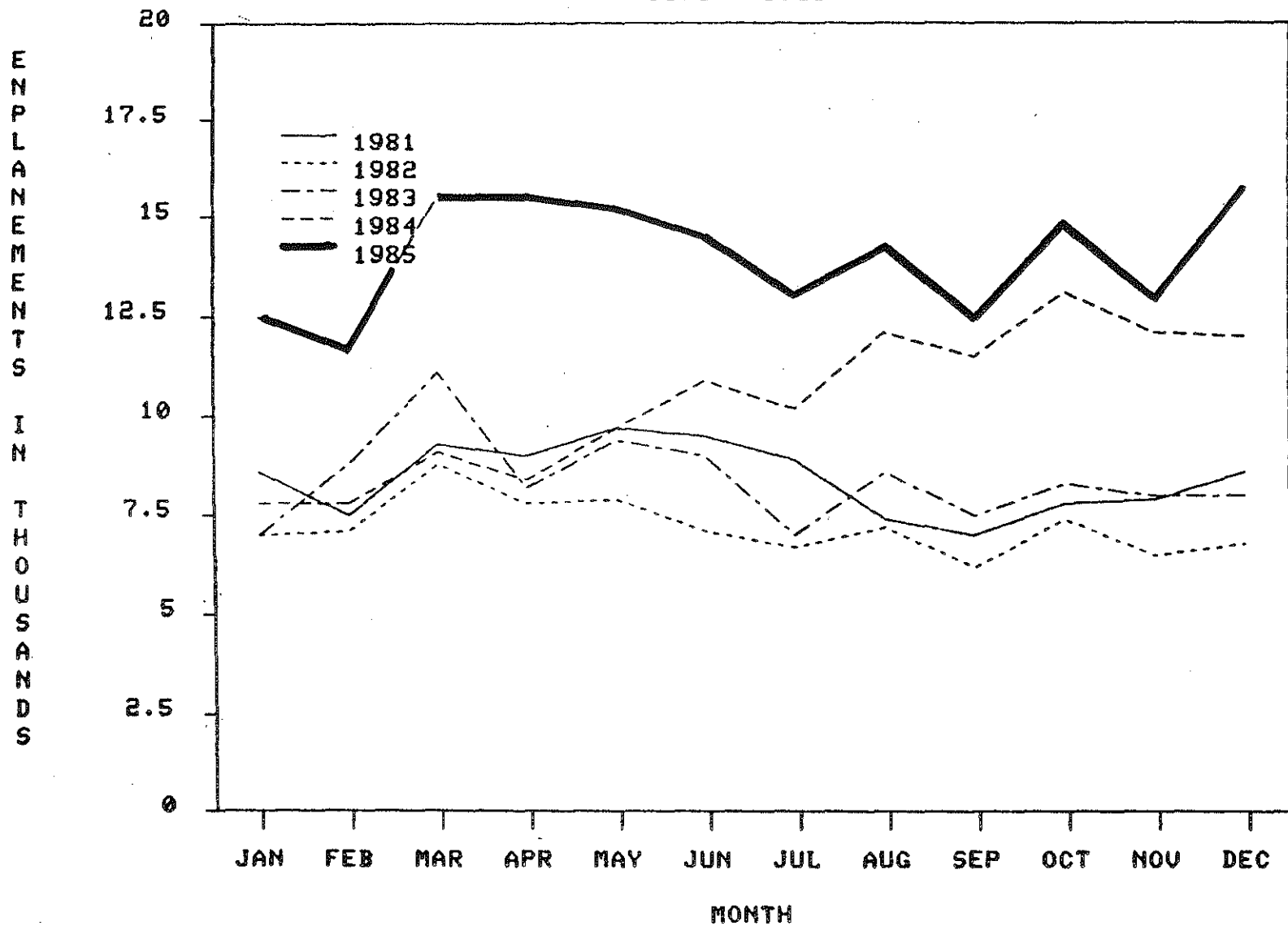


Figure 18

ENPLANEMENTS AT CAPITAL CITY AIRPORT - LANSING
1981 - 1985

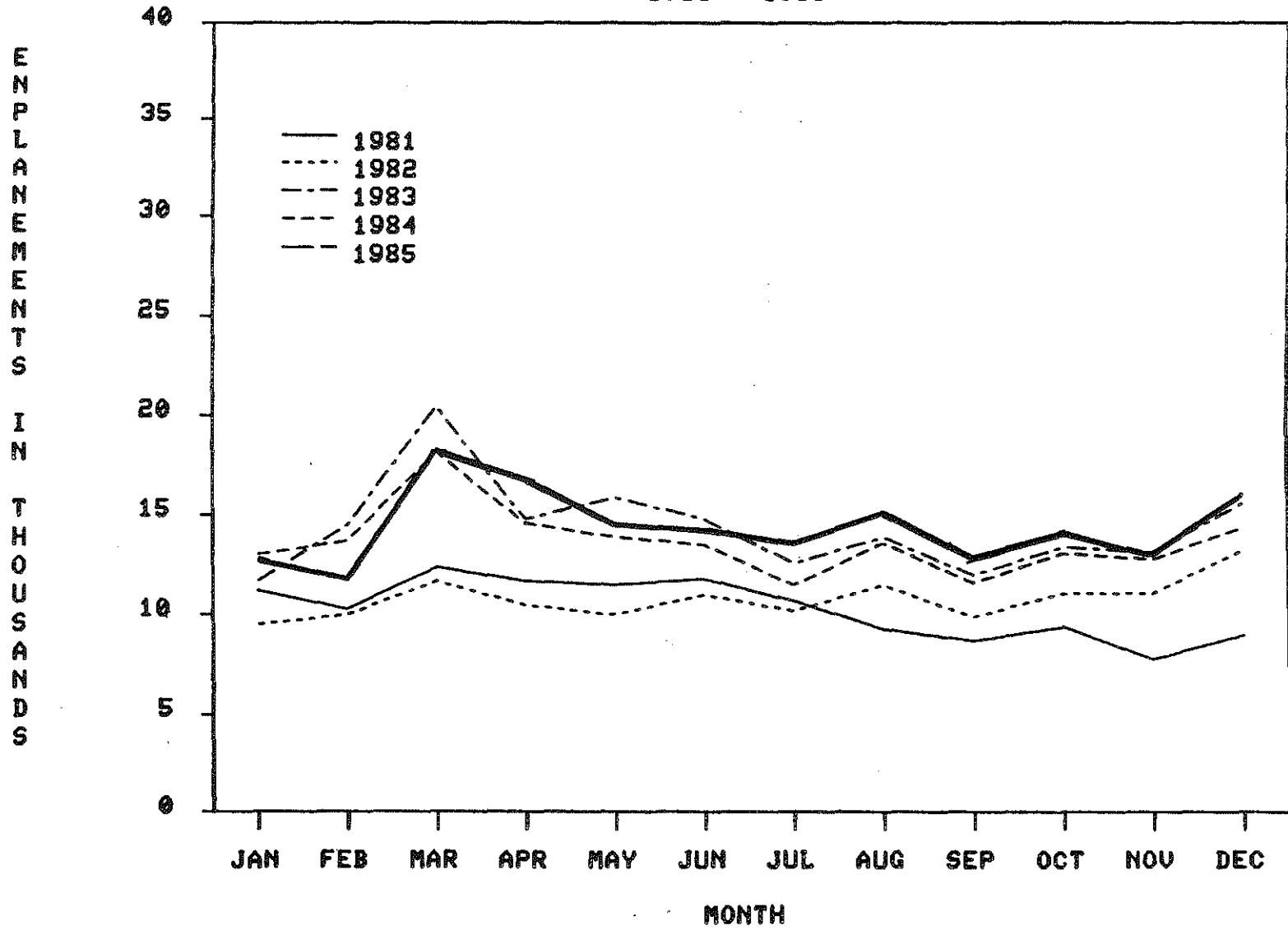


Figure 19

ENPLANEMENTS AT MACKINAC ISLAND - AIRPORT
1981 - 1985

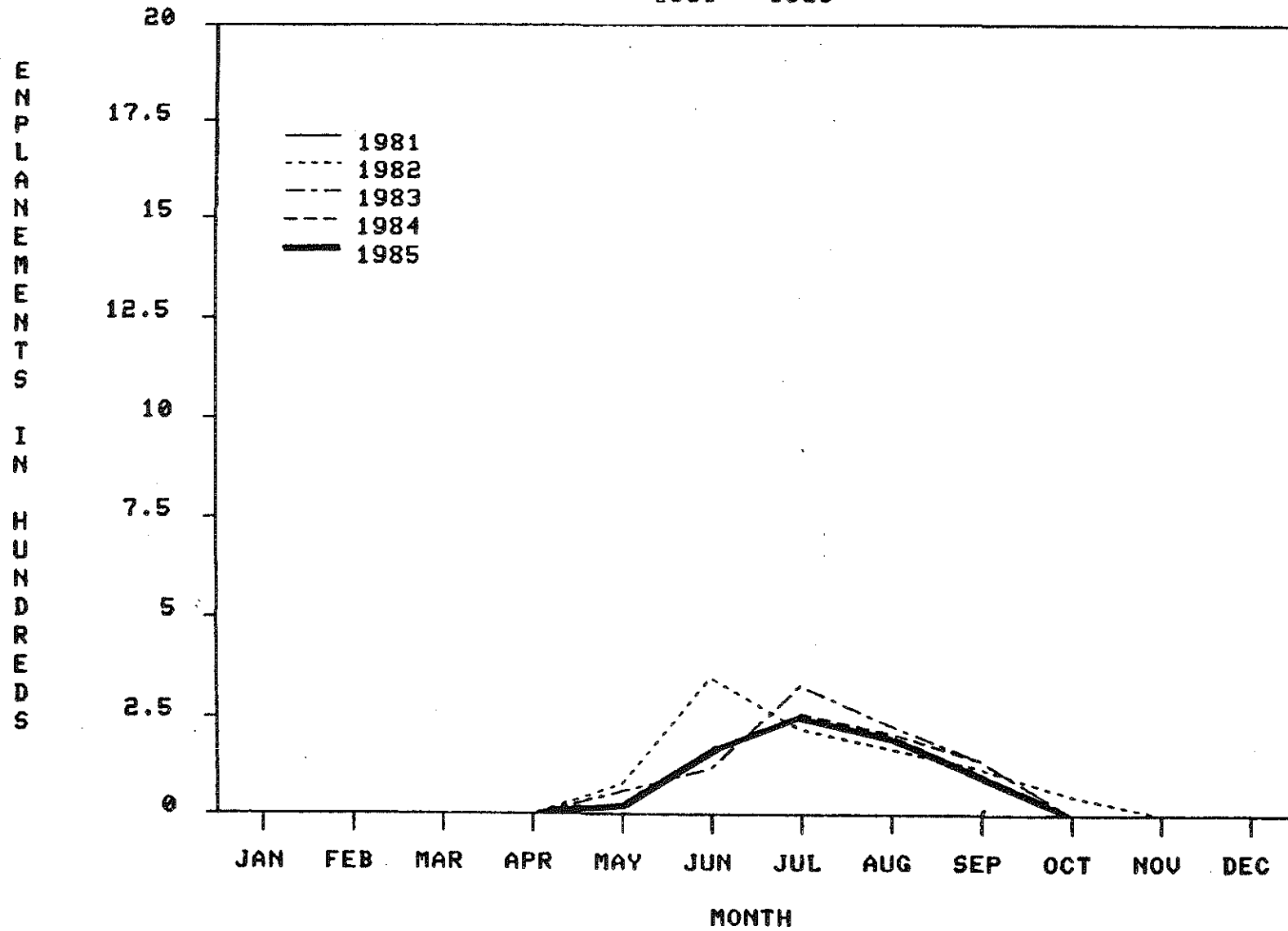


Figure 20

ENPLANEMENTS AT MANISTEE CO. BLACKER AIRPORT - MANISTEE
1981 - 1985

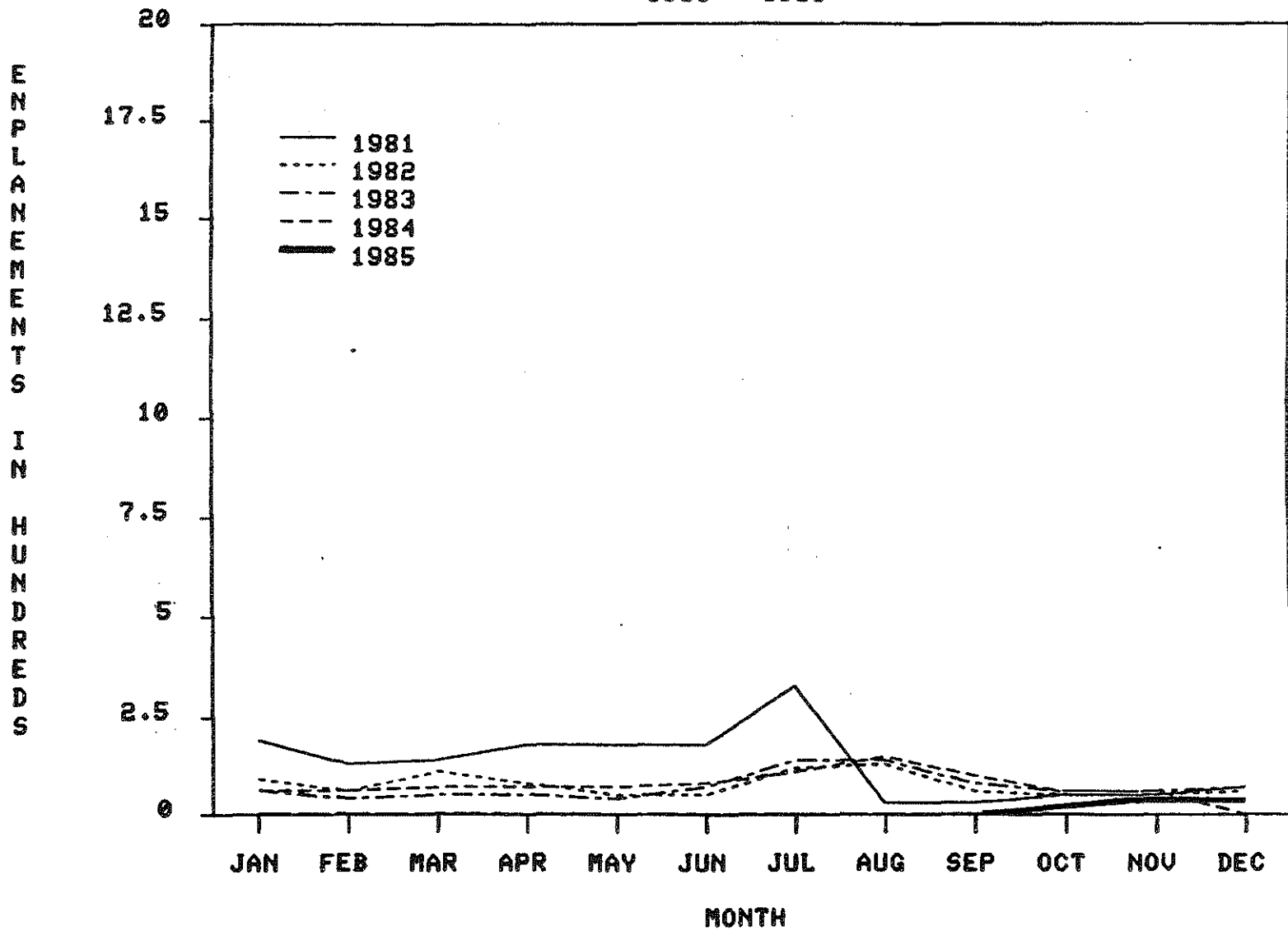


Figure 21

ENPLANEMENTS AT MARQUETTE CO. AIRPORT - MARQUETTE
1981 - 1985

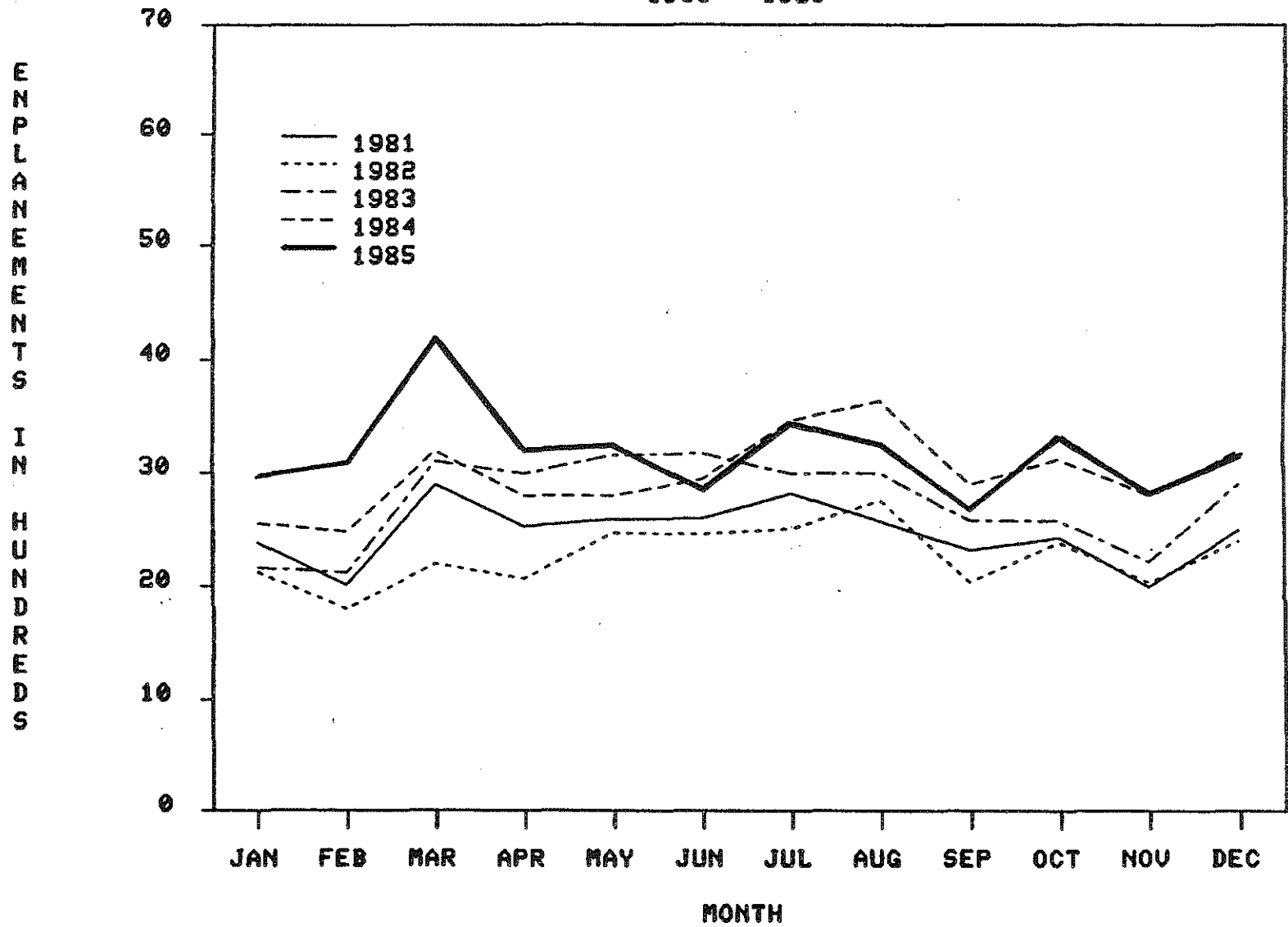


Figure 22

ENPLANEMENTS AT MENOMINEE - MARINETTE AIRPORT
1981 - 1985

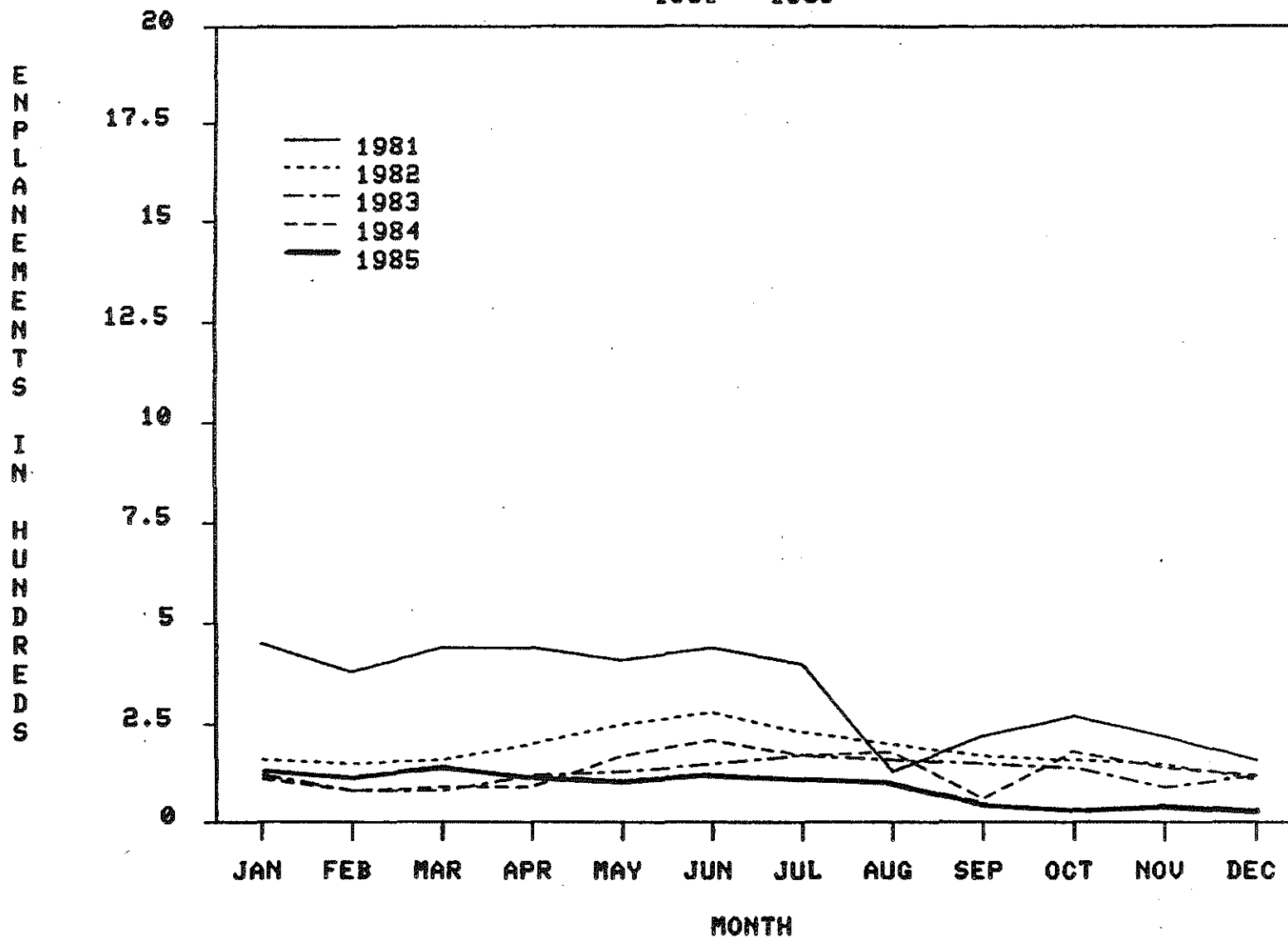


Figure 23

ENPLANEMENTS AT MUSKEGON CO. AIRPORT - MUSKEGON
1981 - 1985

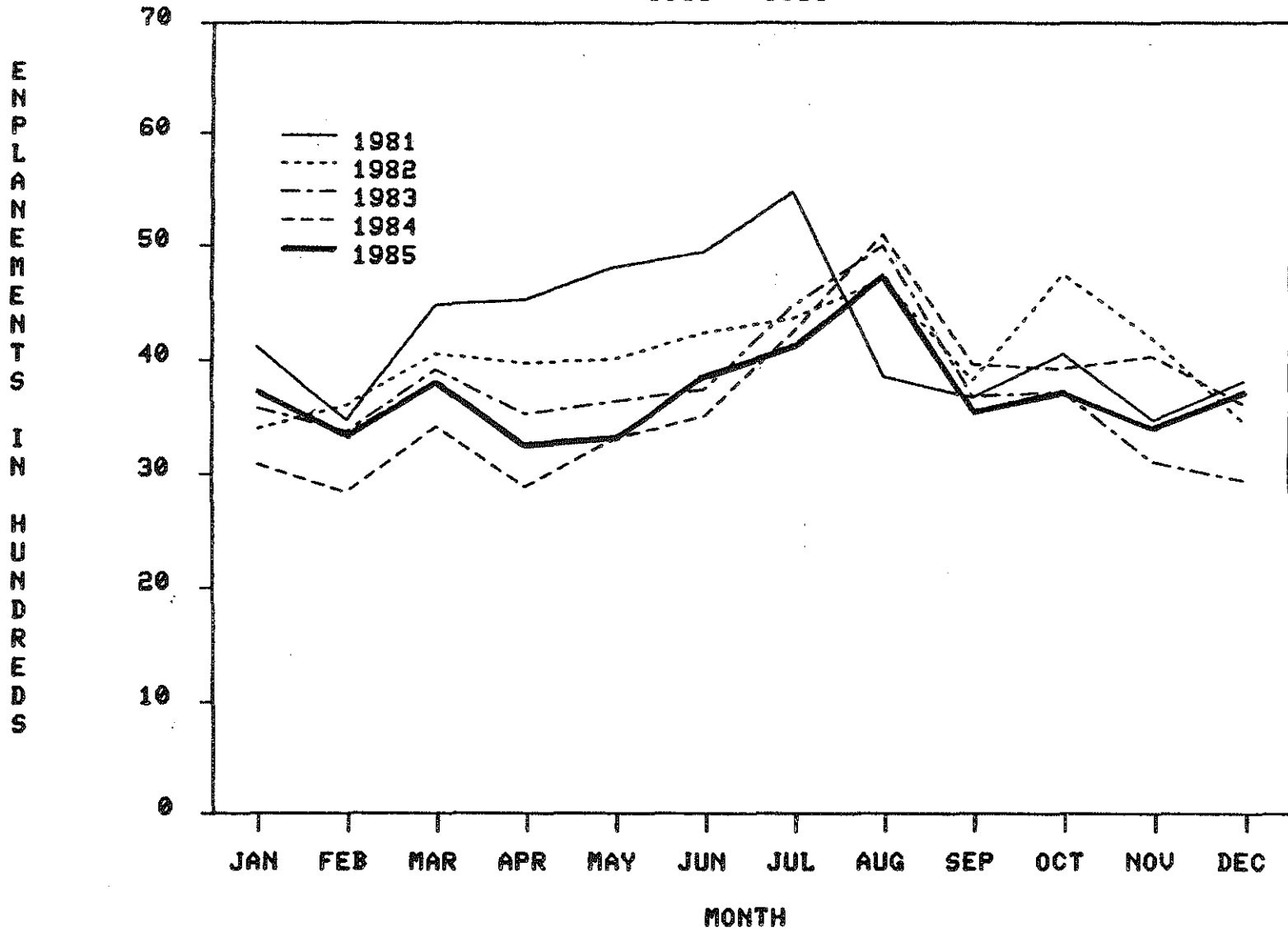


Figure 24

ENPLANEMENTS AT EMMETT CO. AIRPORT - PELLSTON
1981 - 1985

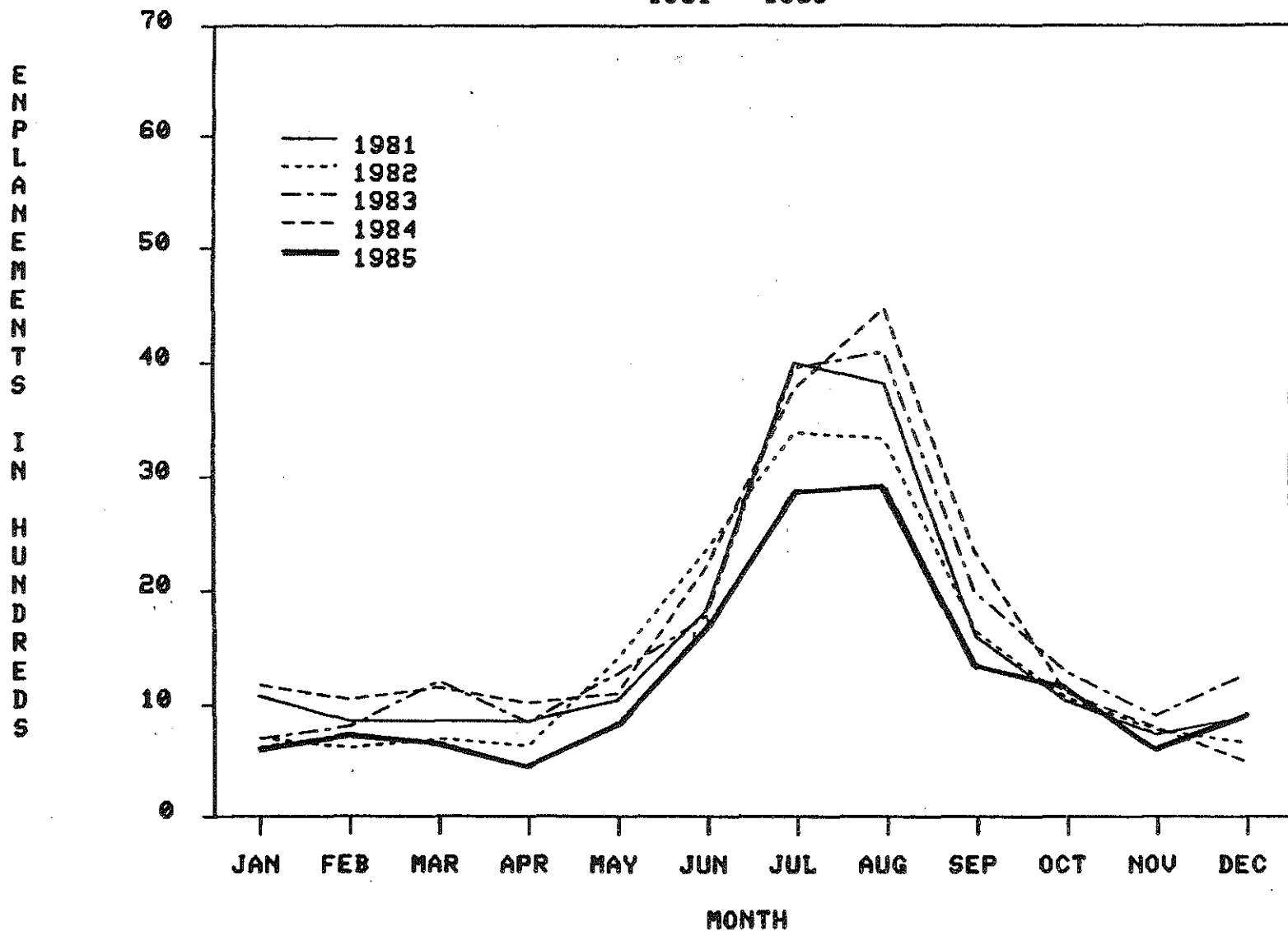


Figure 25

ENPLANEMENTS AT TRI - CITY INTERNATIONAL AIRPORT - SAGINAW
1981 - 1985

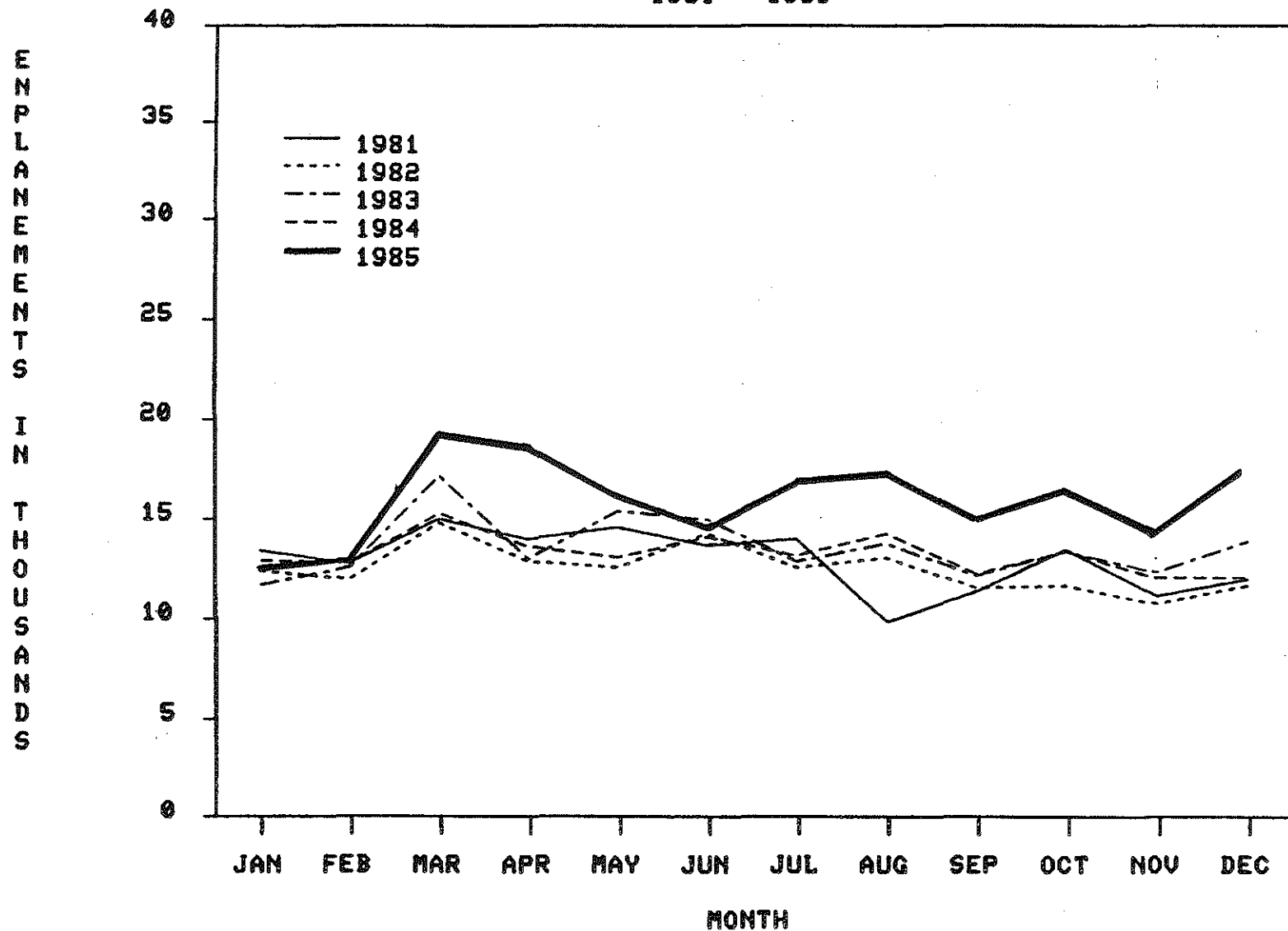


Figure 26

ENPLANEMENTS AT CHIPPEWA CO. AIRPORT - SAULT STE. MARIE
1981 - 1985

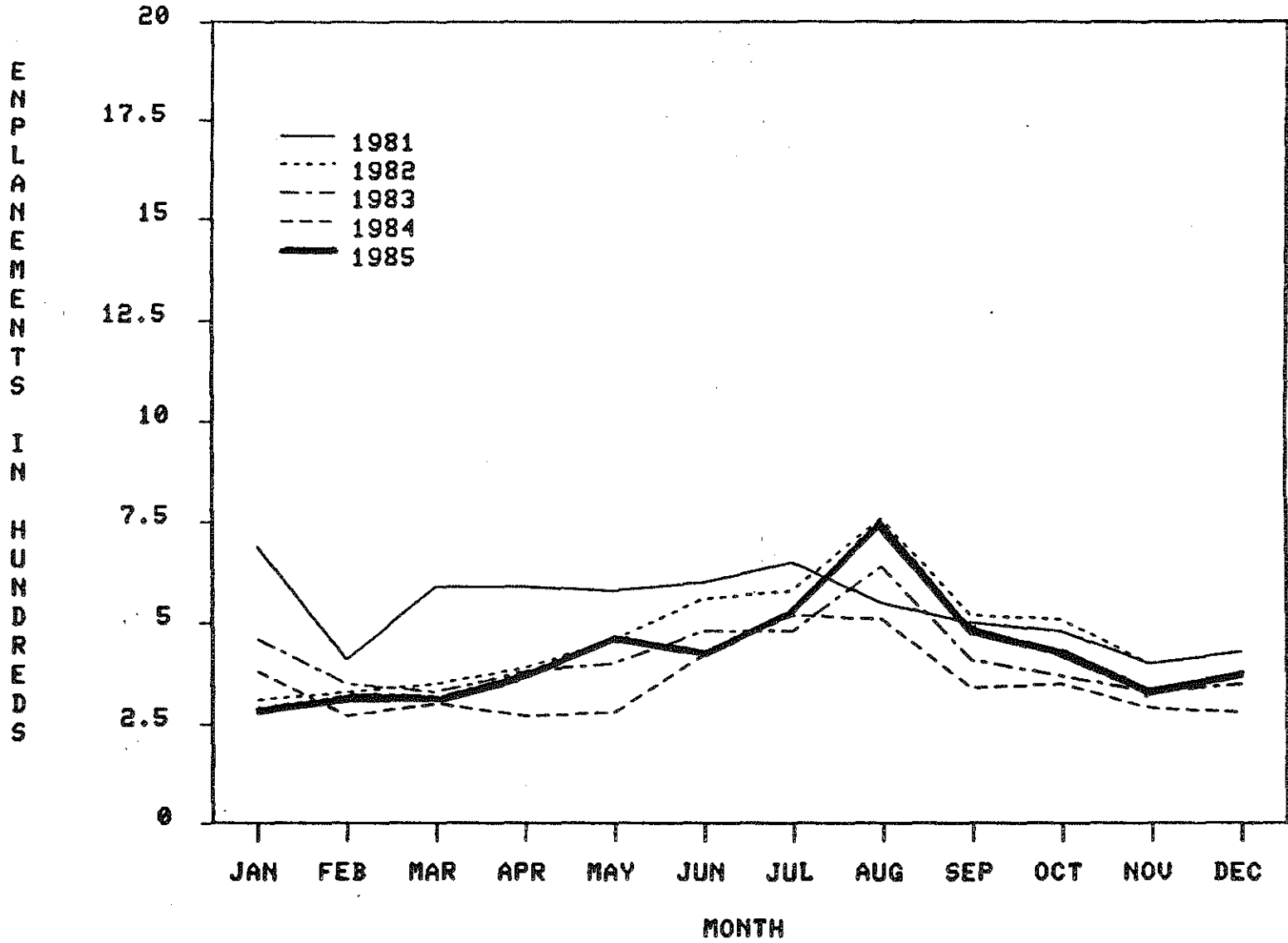


Figure 27

ENPLANEMENTS AT CHERRY CAPITAL AIRPORT - TRAVERSE CITY
1981 - 1985

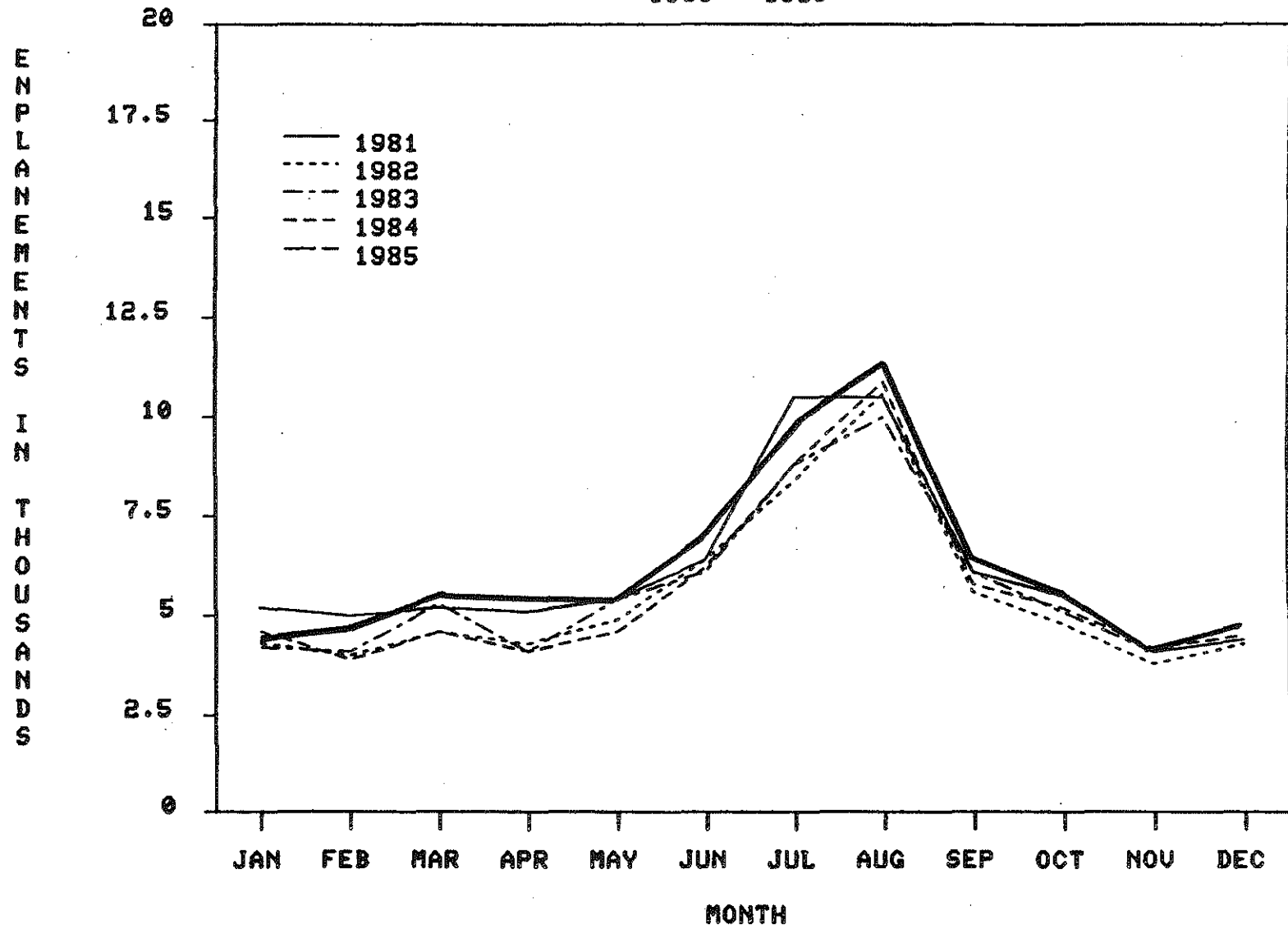


Figure 28

PERCENT OF TOTAL PASSENGERS BY AIR CARRIER AIRPORT MILLIONS
1981

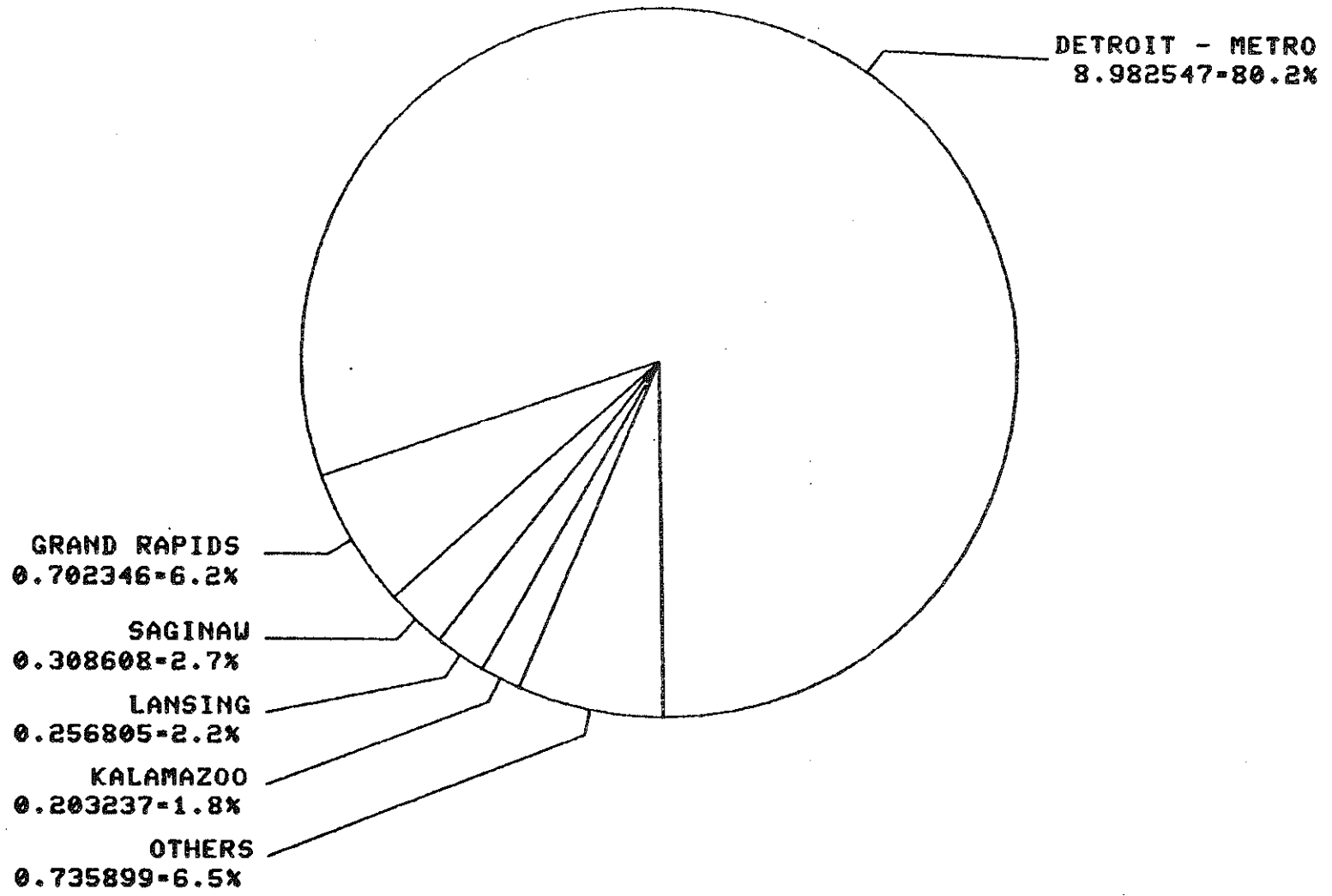


Figure 29

PERCENT OF TOTAL PASSENGERS BY AIR CARRIER AIRPORT MILLIONS
1982

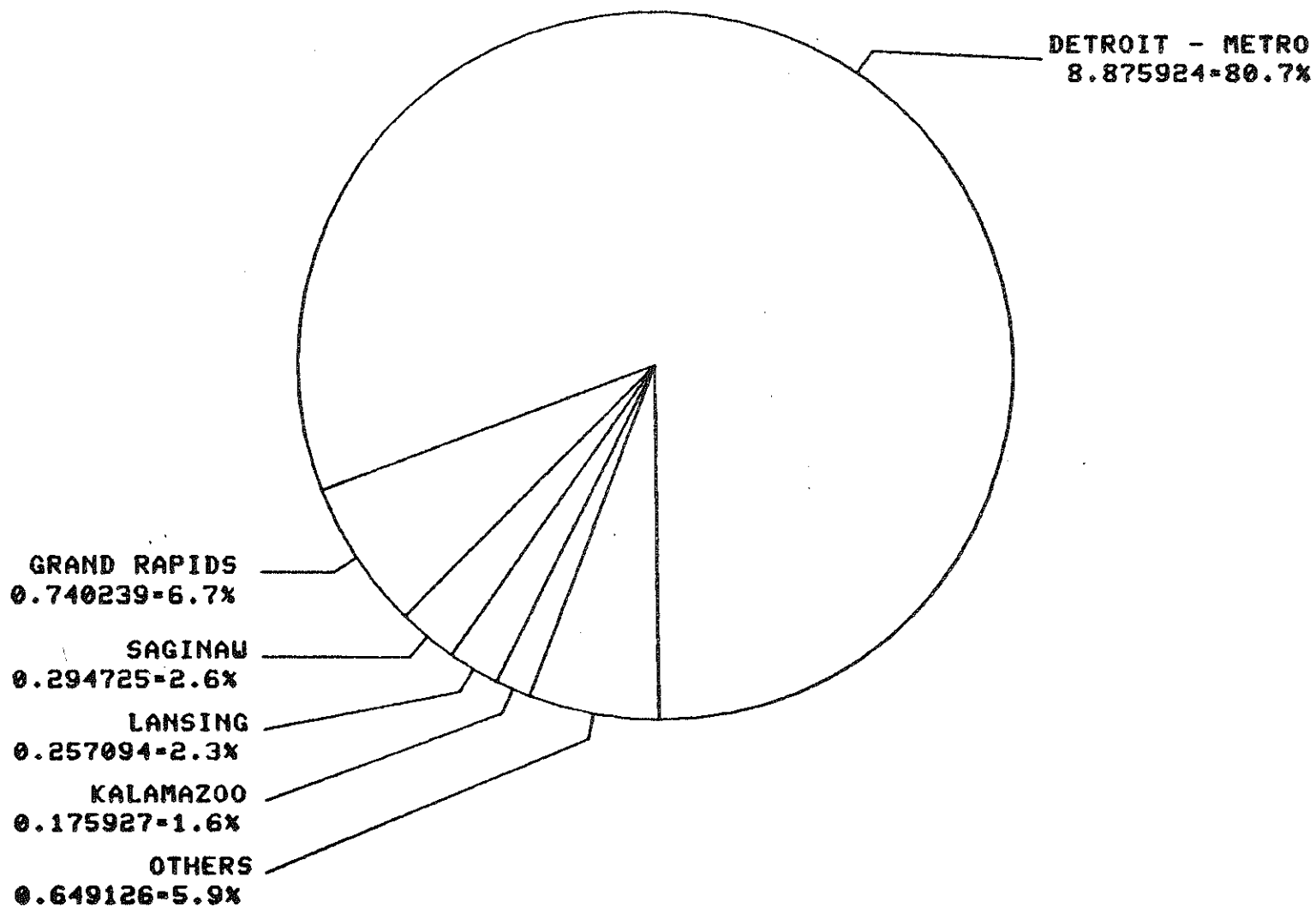


Figure 30

PERCENT OF TOTAL PASSENGERS BY AIR CARRIER AIRPORT MILLIONS
1983

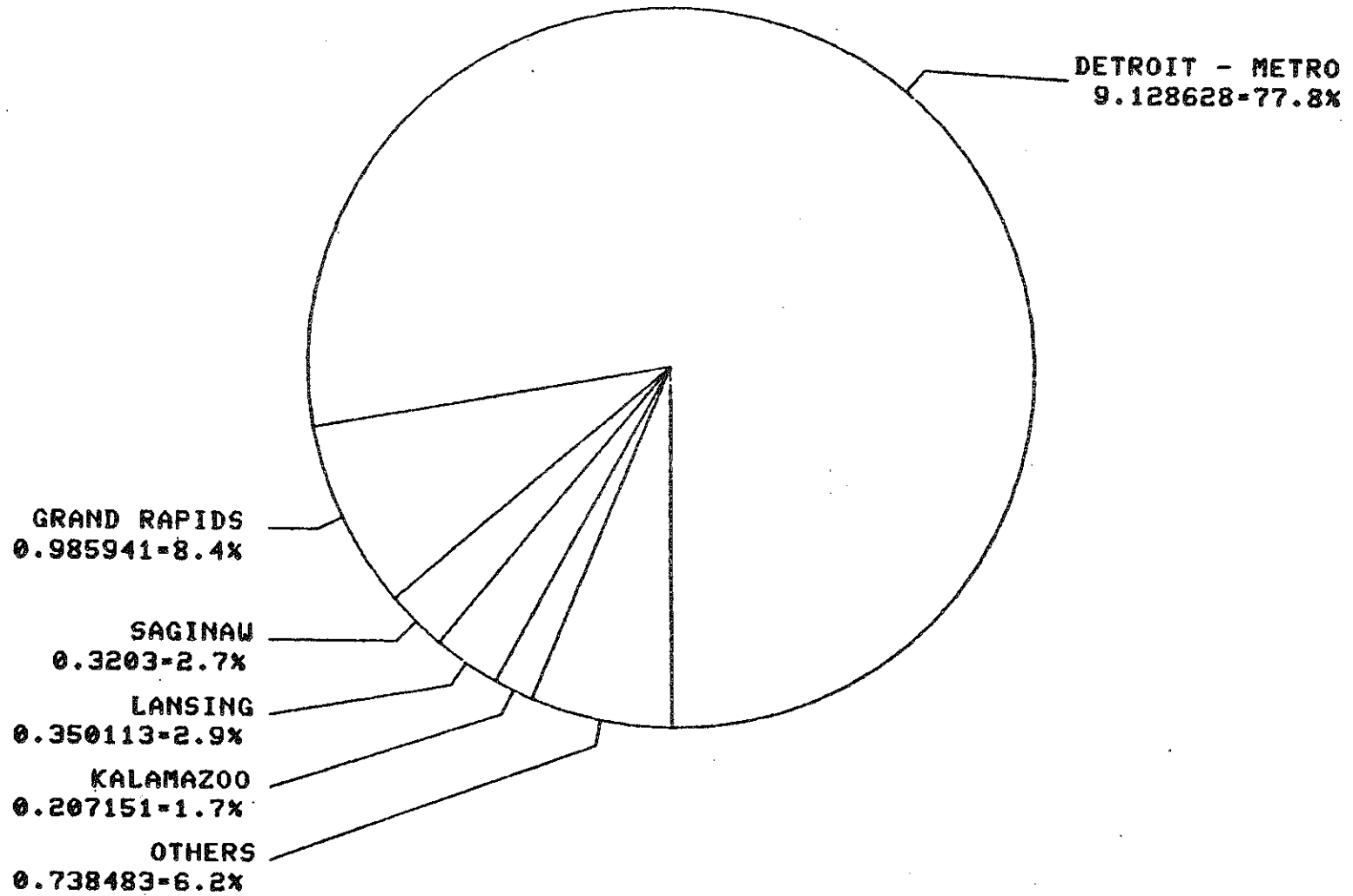


Figure 31

PERCENT OF TOTAL PASSENGERS BY AIR CARRIER AIRPORT MILLIONS
1984

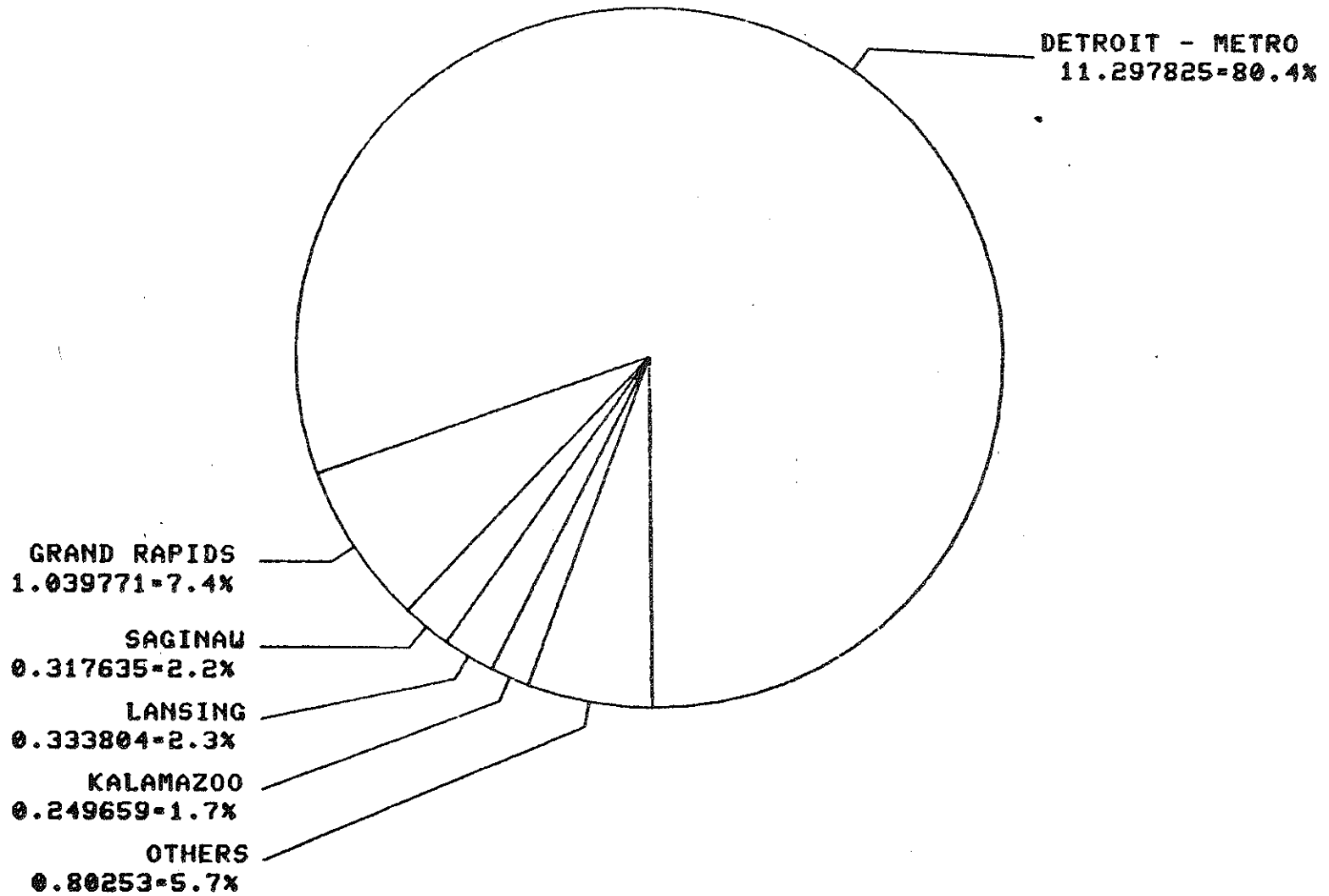


Figure 32

PERCENT OF TOTAL PASSENGERS BY AIR CARRIER AIRPORT MILLIONS
1985

