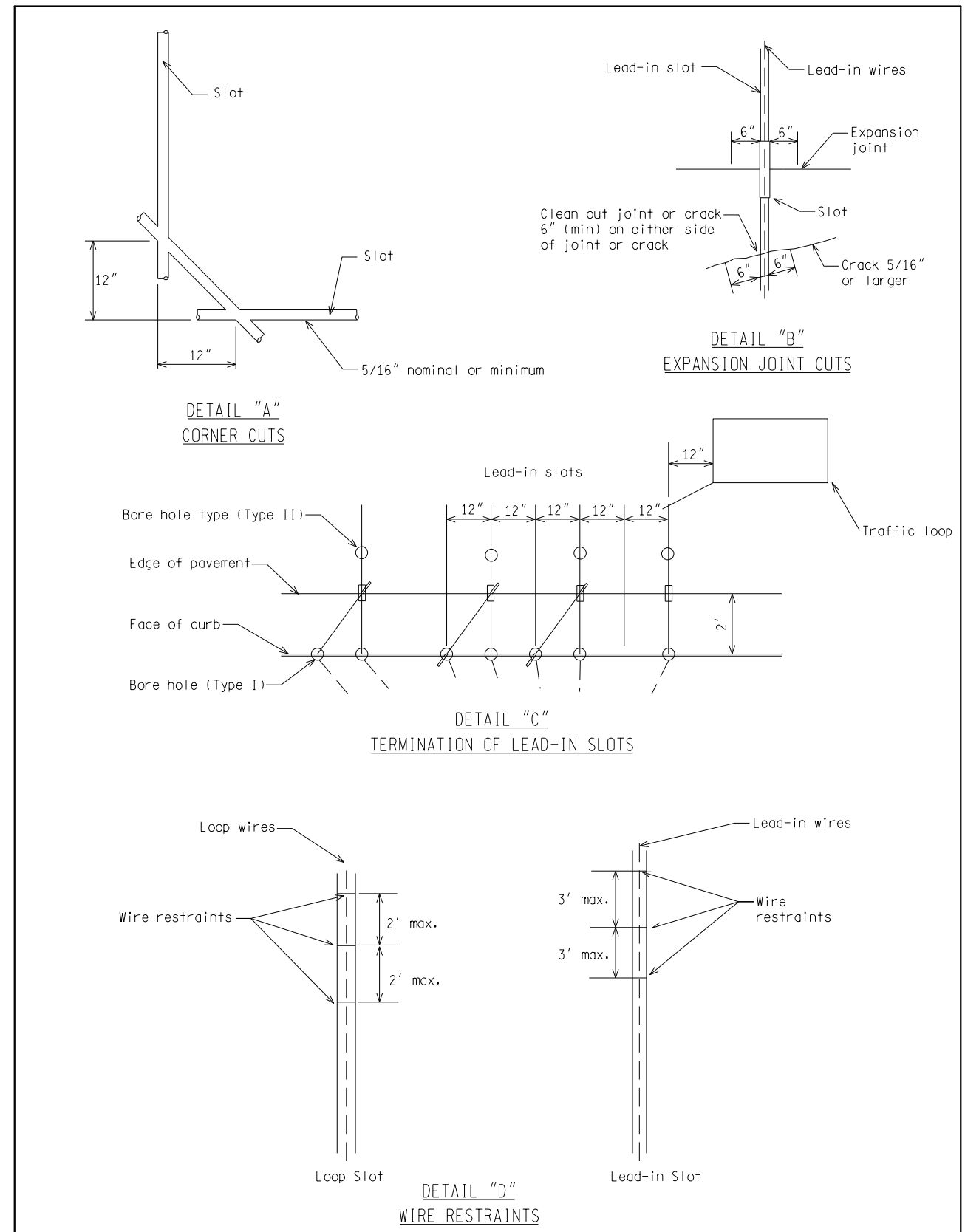


- NOTES:**
- 1) Lead-in slot may be on either near or far side of loop approach as directed by the Engineer.
  - 2) Two loops maximum allowed per saw cut from loop to curb.
  - 3) 3 turns required for loops equal to or greater than 6'x10'.
  - 4) 4 turns required for loops less than 6'x10'.
  - 5) Refer to contract documents for high pressure washing of saw cuts and removal of debris.

NOT TO SCALE		File: PW:RD/TR/Signals/WC SD/Final	Rev. 10/21/14
 MICHIGAN DEPARTMENT OF TRANSPORTATION BUREAU OF HIGHWAYS DELIVERY STANDARD PLAN FOR <b>TRAFFIC LOOPS</b>	ENGINEER OF DELIVERY		
	ENGINEER OF DEVELOPMENT		
DRAWN BY:	(SPECIAL DETAIL)	WC-170-A	SHEET 1 of 4
CHECKED BY:	FHWA APPROVAL DATE	PLAN DATE	

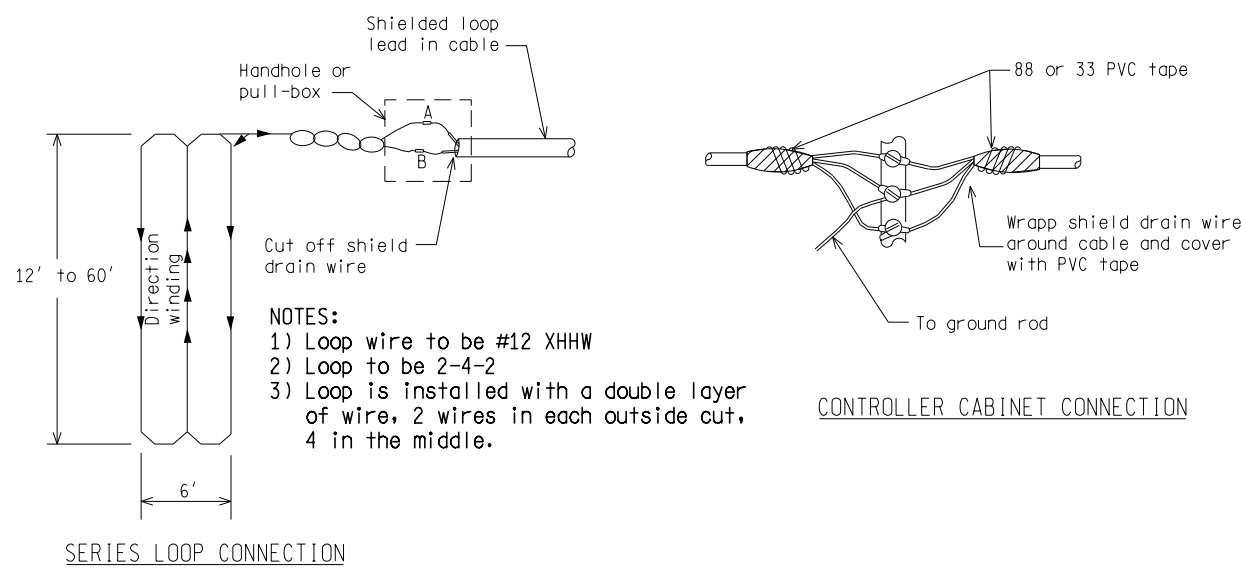
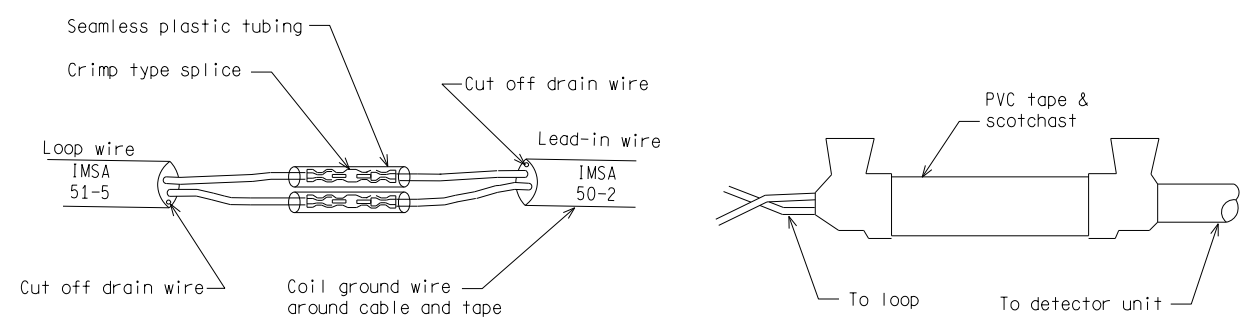
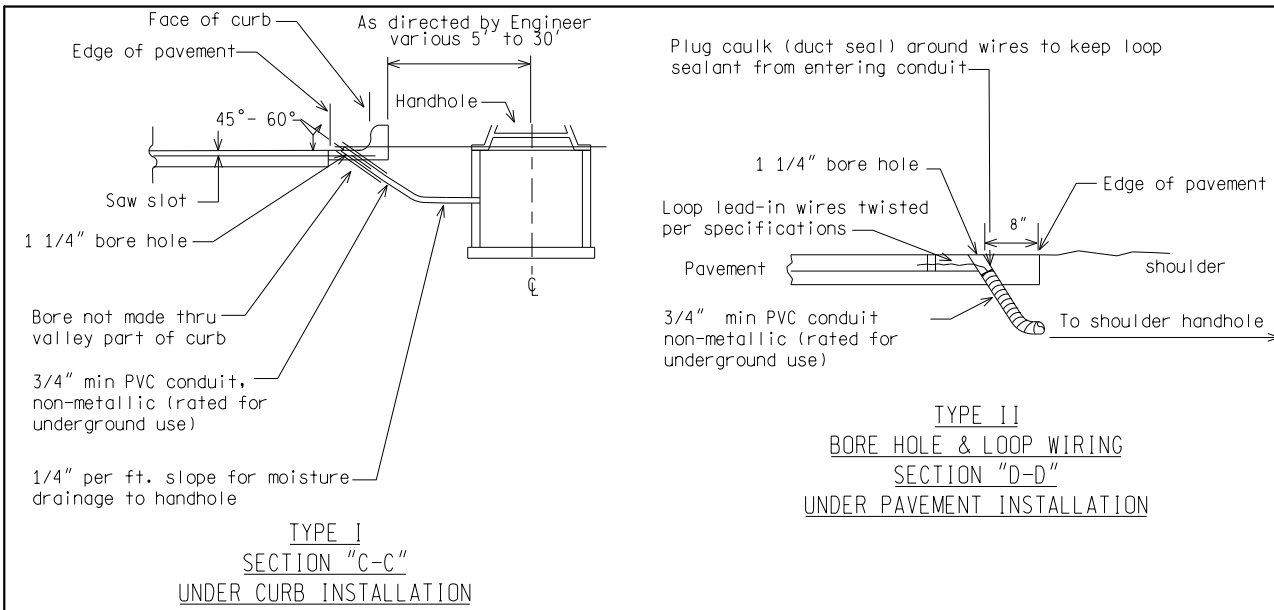


NOT TO SCALE		File: PW:RD/TR/Signals/WC SD/Final	Rev. 10/21/14
 MICHIGAN DEPARTMENT OF TRANSPORTATION BUREAU OF HIGHWAYS DELIVERY STANDARD PLAN (SPECIAL DETAIL) FHWA APPROVAL DATE	ENGINEER OF DELIVERY		
	ENGINEER OF DEVELOPMENT		
DRAWN BY:	(SPECIAL DETAIL)	WC-170-A	SHEET 2 of 4
CHECKED BY:	FHWA APPROVAL DATE	PLAN DATE	

AS-LET PLAN REVISIONS							
NO.	DATE	AUTH	DESCRIPTION	NO.	DATE	AUTH	DESCRIPTION

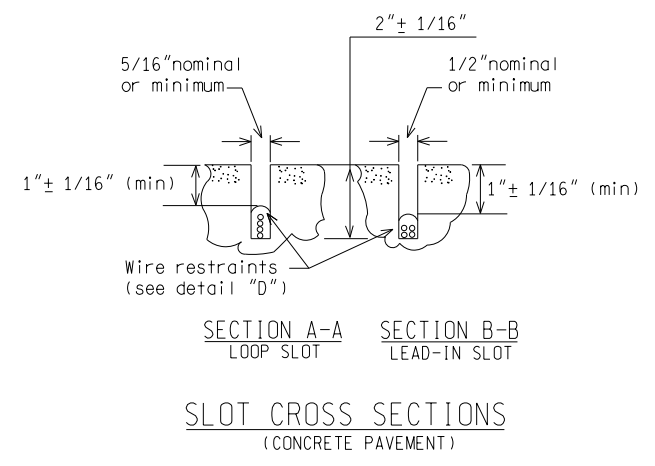
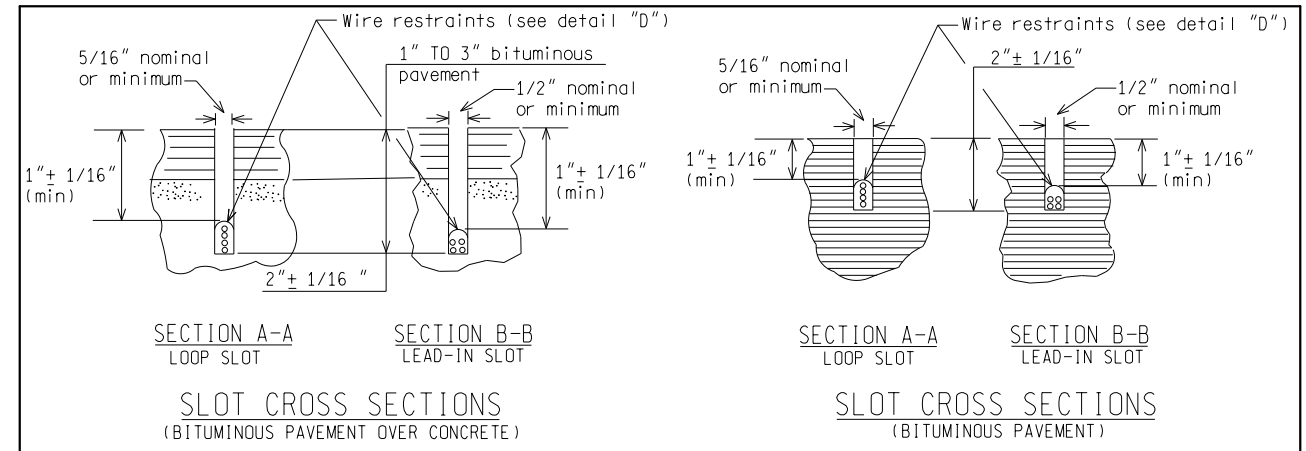


FILE:	DATE:	CS:	DRAWING	SHEET
	DESIGN UNIT:	JN:		
	TSC:			



NOT TO SCALE

MICHIGAN DEPARTMENT OF TRANSPORTATION BUREAU OF HIGHWAYS DELIVERY STANDARD PLAN	(SPECIAL DETAIL) FHWA APPROVAL DATE	PLAN DATE	WC-170-A	SHEET 3 of 4
File: PW:RD/TR/Signals/WC SD/Final	Rev. 10/21/14			



NOT TO SCALE

MICHIGAN DEPARTMENT OF TRANSPORTATION BUREAU OF HIGHWAYS DELIVERY STANDARD PLAN	(SPECIAL DETAIL) FHWA APPROVAL DATE	PLAN DATE	WC-170-A	SHEET 4 of 4
File: PW:RD/TR/Signals/WC SD/Final	Rev. 10/21/14			

AS-LET PLAN REVISIONS							
NO.	DATE	AUTH	DESCRIPTION	NO.	DATE	AUTH	DESCRIPTION



FILE:	DATE:	CS:	DRAWING	SHEET
	DESIGN UNIT:			
	TSC:	JN:		