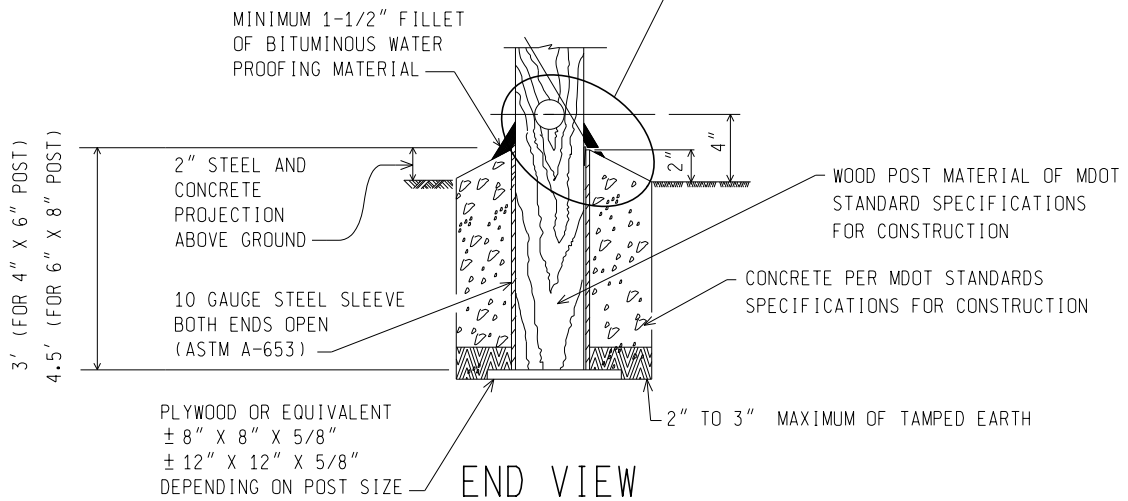
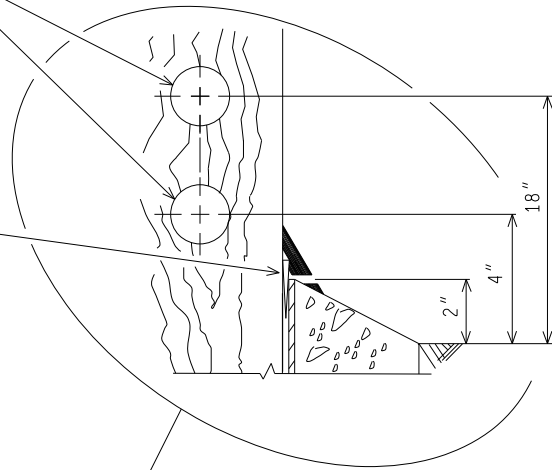


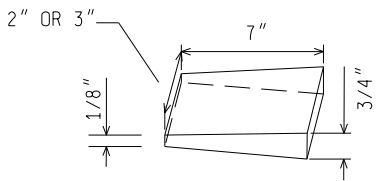
4" X 6" (NOMINAL POST) 1-1/2" DIA. 2 HOLES

6" X 8" (NOMINAL POST) 3-1/2" DIA. 2 HOLES

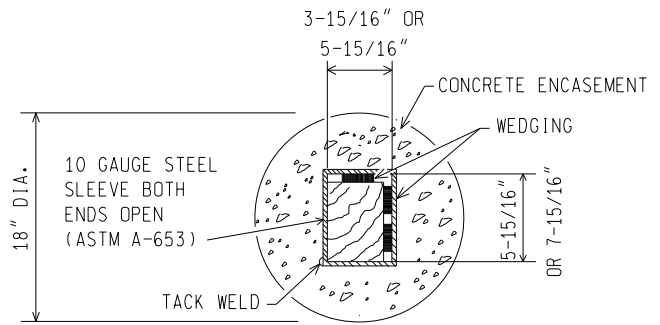
TAPERED HARD WOOD WEDGES (HARDWOOD WEDGE TO BE OAK, MAPLE OR OTHER APPROVED DENSE HARDWOODS) TO HOLD POST IN A STABLE POSITION AFTER CONCRETE HAS SET. USE 2" OR 3" WEDGES TO COVER APPROXIMATELY 75% OF POST WIDTH ON TWO ADJACENT SIDES.



NOTE: INSIDE DIMENSIONS OF SLEEVE MAY BE A MAXIMUM OF 1/8" GREATER THAN SHOWN.



WEDGE



TOP VIEW

WOOD POST FOUNDATION DETAILS



PREPARED BY
TSMO DIVISION

DRAWN BY: DHD

CHECKED BY: AJU

DEPARTMENT DIRECTOR
Paul C. Ajegba

APPROVED BY: Randy V. Puffel
DIRECTOR, BUREAU OF FIELD SERVICES

APPROVED BY: Mark A. Van Pelt
DIRECTOR, BUREAU OF DEVELOPMENT

MICHIGAN DEPARTMENT OF TRANSPORTATION
BUREAU OF DEVELOPMENT STANDARD PLAN FOR

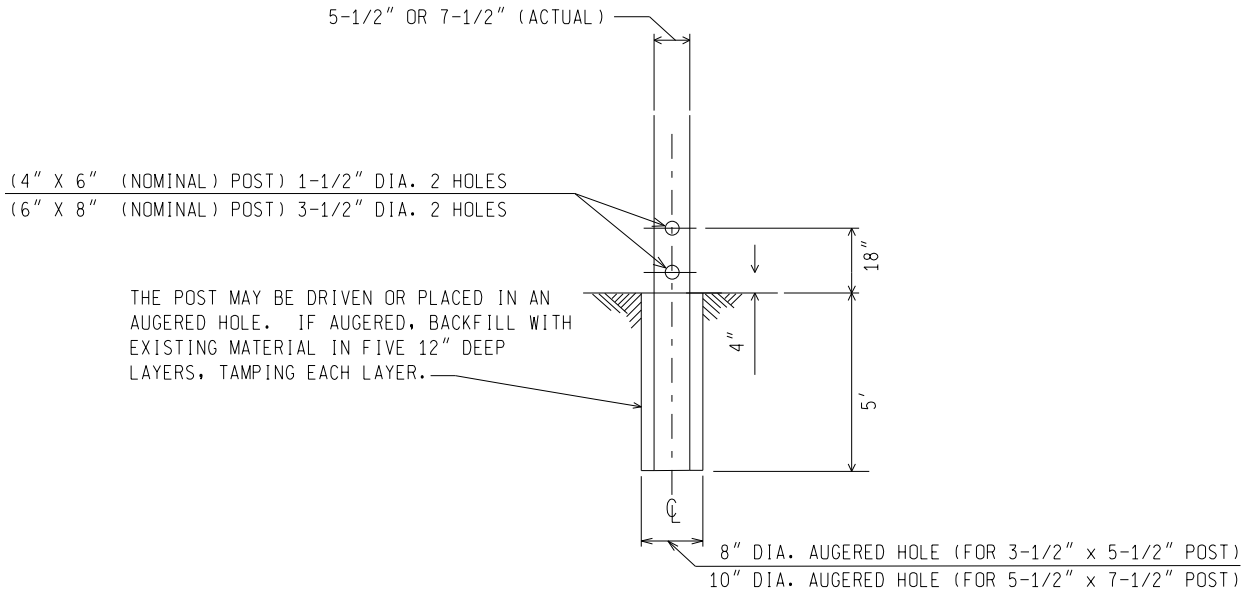
WOOD POSTS

05/01/15
F.H.W.A. APPROVAL

08/13/14
PLAN DATE

SIGN-210-B

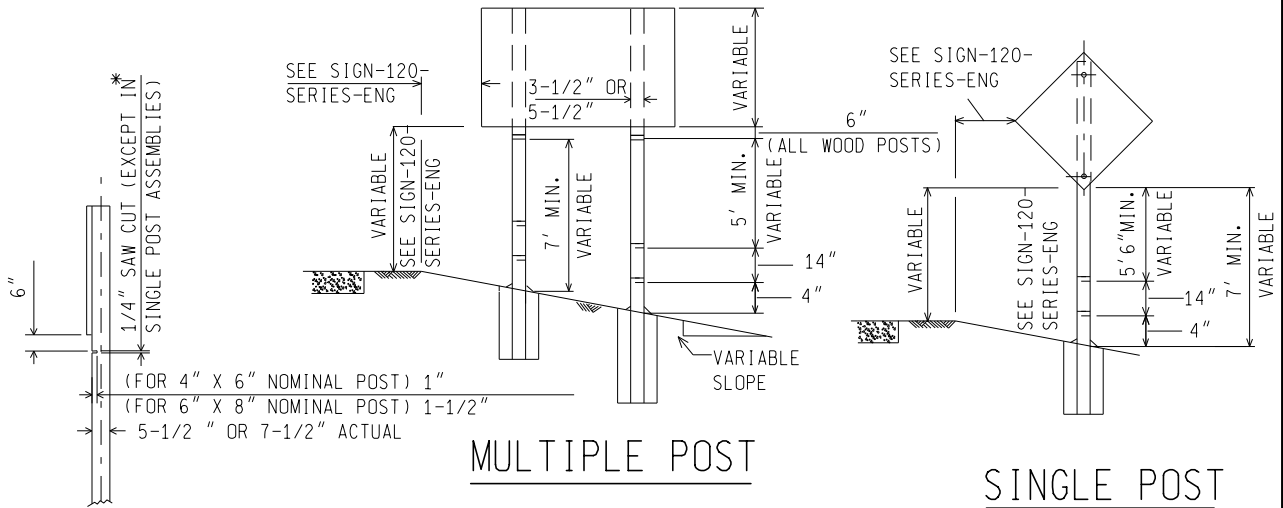
SHEET
1 OF 5



END VIEW

WOOD POST DIRECT EMBEDMENT DETAIL
SINGLE POST INSTALLATIONS ONLY

NOTE: DIRECT EMBEDMENT ONLY AT LOCATIONS IDENTIFIED IN PLANS OR PROPOSAL.



SAW CUT DETAIL

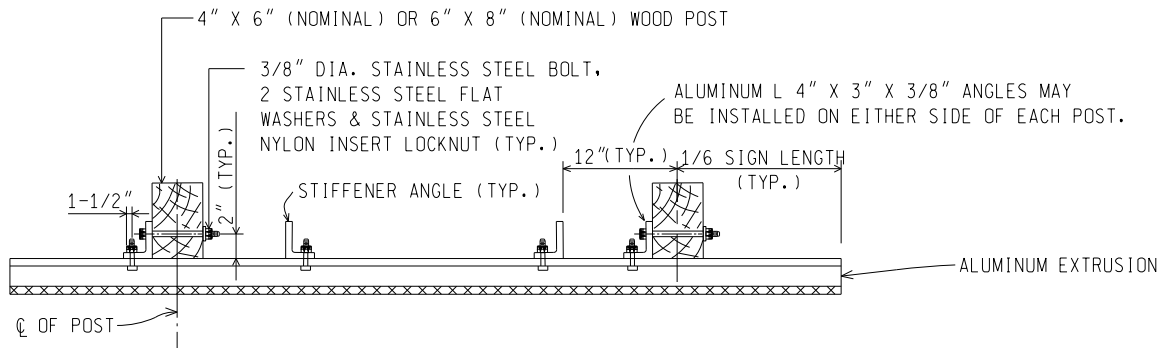
BREAKAWAY HOLES/SAWCUT RELATIONSHIP

*SAW CUT SHALL BE PLACED ON
APPROACH TRAFFIC SIDE OF POST.

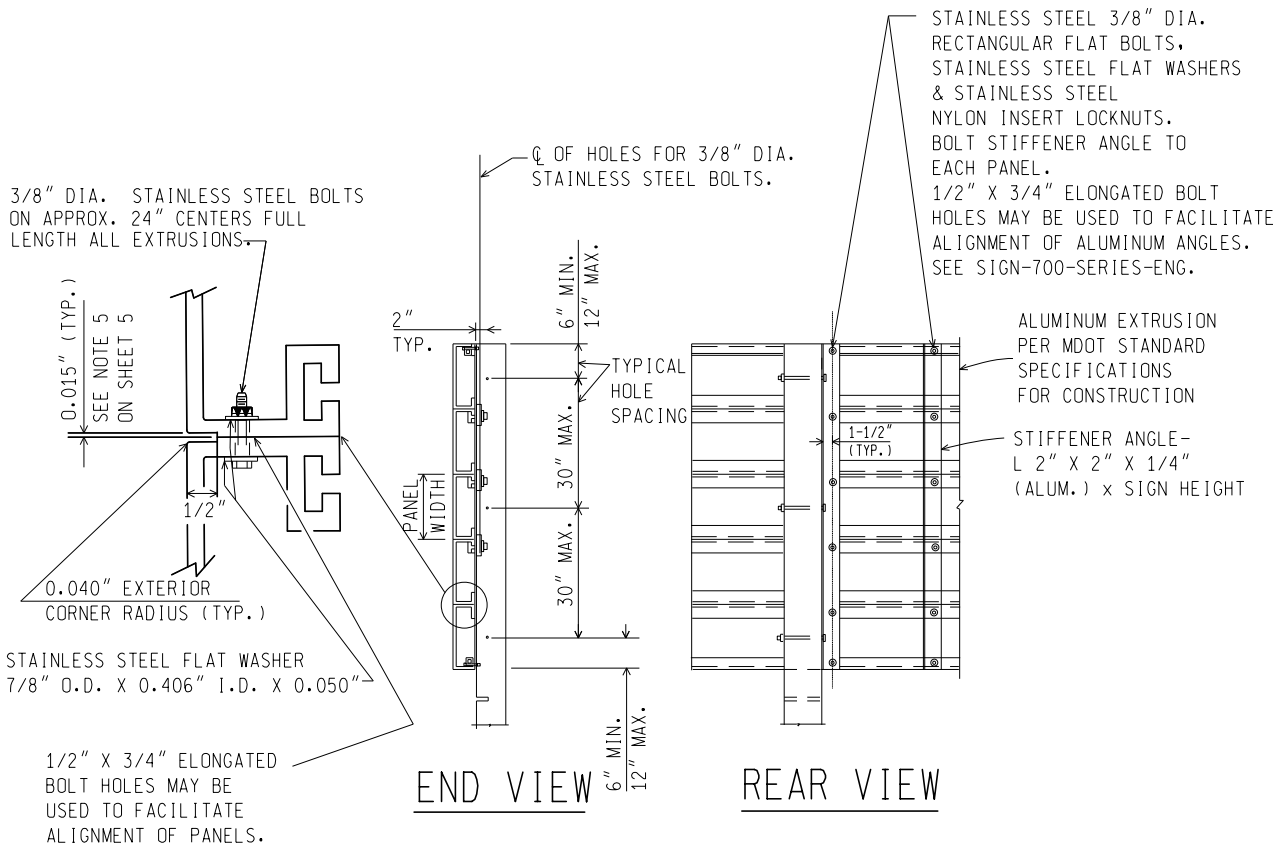
NOT TO SCALE

MICHIGAN DEPARTMENT OF TRANSPORTATION BUREAU OF DEVELOPMENT STANDARD PLAN	05/01/15 F.H.W.A. APPROVAL	08/13/14 PLAN DATE	SIGN-210-B	SHEET 2 OF 5
--	-------------------------------	-----------------------	------------	-----------------

NOTE: THE ORIGINAL SIGNED COPY IS KEPT ON FILE AT THE MICHIGAN DEPARTMENT OF TRANSPORTATION.



TOP VIEW
SINGLE TYPE I SIGN



TYPE I SINGLE SIGN - ERECTION DETAILS

NOT TO SCALE

MICHIGAN DEPARTMENT OF TRANSPORTATION
BUREAU OF DEVELOPMENT STANDARD PLAN

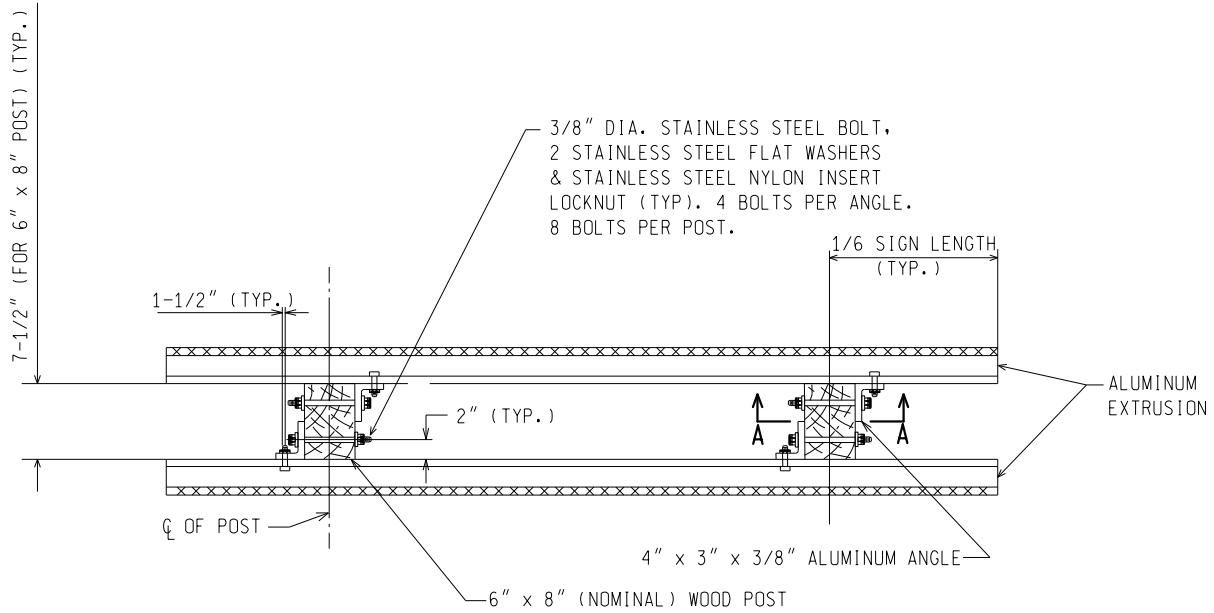
05/01/15
F.H.W.A. APPROVAL

08/13/14
PLAN DATE

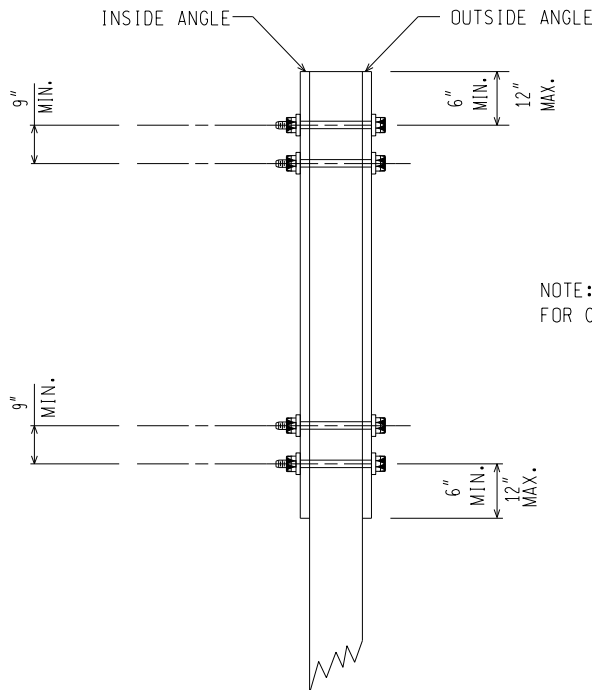
SIGN-210-B

SHEET
3 OF 5

NOTE: THE ORIGINAL SIGNED COPY IS KEPT ON FILE AT THE MICHIGAN DEPARTMENT OF TRANSPORTATION.



TOP VIEW
BACK-TO-BACK TYPE I SIGNS



NOTE: REFER TO TYPE I SIGN-ERECTION DETAILS FOR CONNECTING ANGLES TO BACK OF SIGNS.

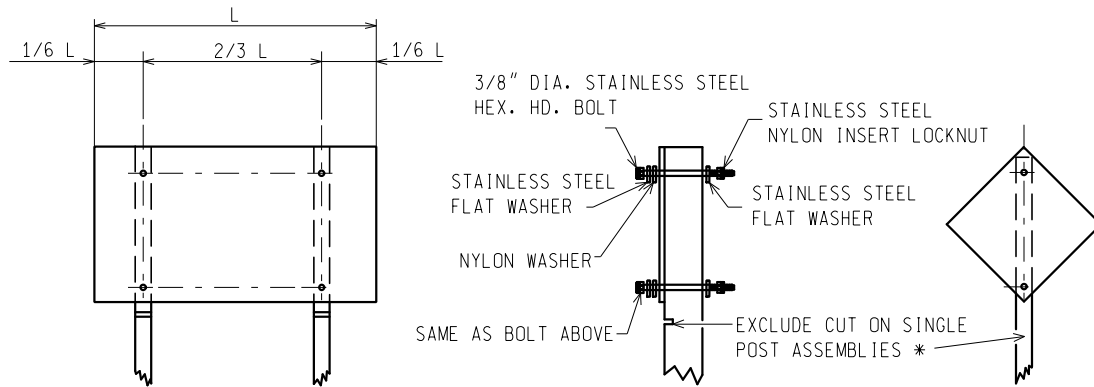
SECTION A-A

TYPE I BACK-TO-BACK SIGNS-ERECTION DETAILS

NOT TO SCALE

MICHIGAN DEPARTMENT OF TRANSPORTATION BUREAU OF DEVELOPMENT STANDARD PLAN	05/01/15 F.H.W.A. APPROVAL	08/13/14 PLAN DATE	SIGN-210-B	SHEET 4 OF 5
--	-------------------------------	-----------------------	------------	-----------------

NOTE: THE ORIGINAL SIGNED COPY IS KEPT ON FILE AT THE MICHIGAN DEPARTMENT OF TRANSPORTATION.



* SAW CUT SHALL BE PLACED ON APPROACH TRAFFIC SIDE OF POST.

CONNECTION DETAIL

TYPES II & III SIGNS - ERECTION DETAILS

NOTES:

1. THE DRILLED BREAKAWAY HOLES ARE TO BE CAREFULLY CENTERED ON THE POSTS.
2. ALL CONCRETE FOUNDATIONS SHALL BE FINISHED AS SHOWN AND ANY SURPLUS MATERIAL SHALL BE COMPLETELY REMOVED FROM RIGHT-OF-WAY. SIGNS SHALL NOT BE ERECTED ON WOOD POSTS FOR A MINIMUM OF 24 HOURS AFTER PLACEMENT OF THE CONCRETE.
3. THE PAY ITEM "SIGN, TYPE ___" INCLUDES ALL ATTACHING DEVICES AND HARDWARE.
4. WOOD POSTS MAY BE DIRECTLY EMBEDDED ONLY AT THOSE LOCATIONS IDENTIFIED IN THE PLANS OR PROPOSAL.
5. A 0.500" WIDE X 0.015" DEEP GROOVE SHALL RUN THE ENTIRE LENGTH AT TOP AND BOTTOM OF ALL EXTRUDED ALUMINUM PANELS TO ACCOMMODATE OVERLAP SHEETING.
6. ALL STAINLESS STEEL BOLTS, NUTS, AND WASHERS SHALL BE MDOT STANDARDS SPECIFICATIONS FOR CONSTRUCTION.
7. FIELD DRILL ALUMINUM ANGLES AND WOOD POSTS.
8. ALL SIGNS SHALL BE ATTACHED SO THAT THE BOLTS ARE CENTERED HORIZONTALLY ON THE POSTS.
9. THE SIGNS SHOULD BE PLACED ON THE SUPPORT FOLLOWING SHS 10 - SUPPORT HOLE PLACEMENT. FOR RECTANGULAR SIGNS THE SUPPORT SHOULD BE LONG ENOUGH TO REACH THE TOP OF THE SIGN. THE SUPPORT SHOULD NOT EXTEND BEYOND THE TOP EDGE OF THE SIGN. FOR SIGNS THAT ARE NOT RECTANGULAR THE SUPPORT SHOULD EXTEND THE TOP OF THE SIGN WITHOUT EXTENDING BEYOND THE TOP EDGE. THE SUPPORT SHOULD NOT BE VISIBLE WHEN FACING THE SIGN.

NOT TO SCALE

MICHIGAN DEPARTMENT OF TRANSPORTATION BUREAU OF DEVELOPMENT STANDARD PLAN	05/01/15 F.H.W.A. APPROVAL	08/13/14 PLAN DATE	SIGN-210-B	SHEET 5 OF 5
--	-------------------------------	-----------------------	------------	-----------------

NOTE: THE ORIGINAL SIGNED COPY IS KEPT ON FILE AT THE MICHIGAN DEPARTMENT OF TRANSPORTATION.