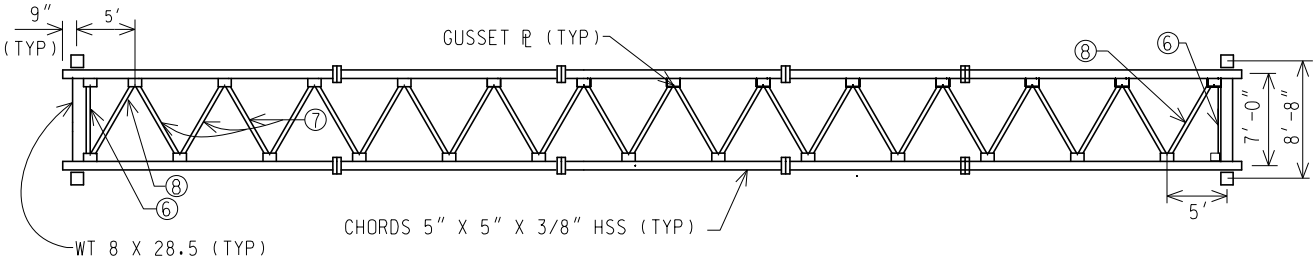


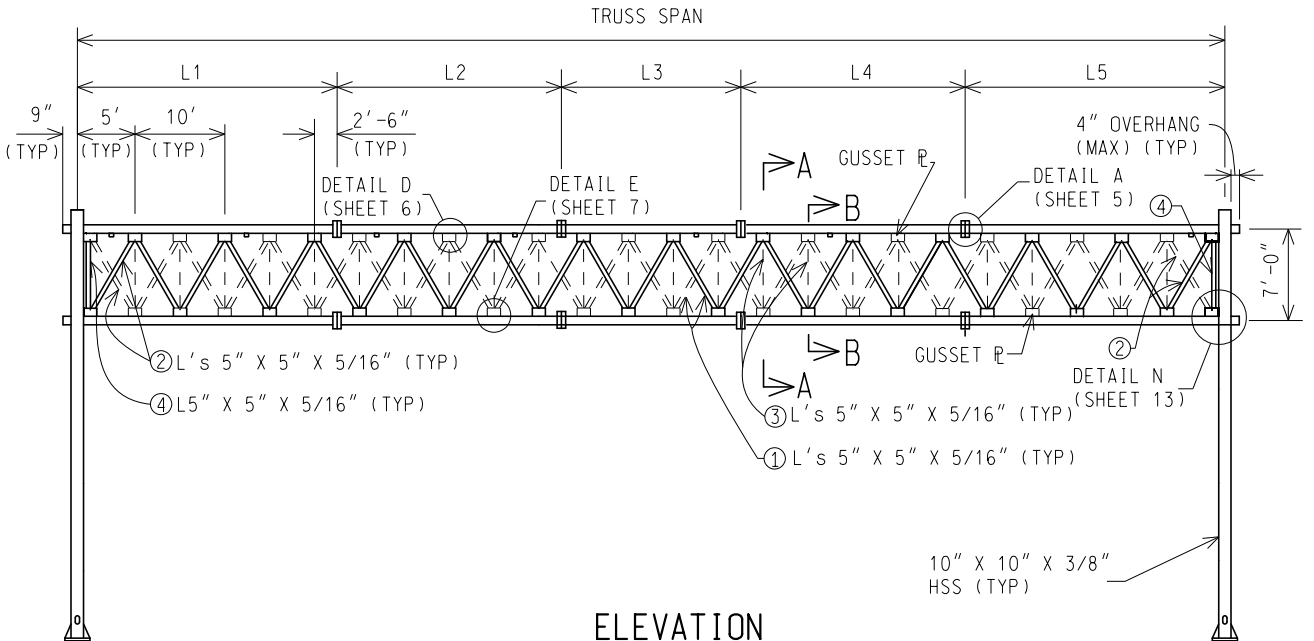
PLAN

TOP WIND BRACING LOOKING DOWN



PLAN

BOTTOM WIND BRACING LOOKING DOWN



ELEVATION

FACING TRAFFIC

TO BE USED FOR MAINTENANCE PURPOSES ONLY



PREPARED BY
DESIGN DIVISION

DRAWN BY: _____
CHECKED BY: _____

DEPARTMENT DIRECTOR
Kirk T. Steudle

APPROVED BY: _____
DIRECTOR, BUREAU OF FIELD SERVICES

APPROVED BY: _____
DIRECTOR, BUREAU OF DEVELOPMENT

MICHIGAN DEPARTMENT OF TRANSPORTATION
BUREAU OF DEVELOPMENT STANDARD PLAN FOR

**STEEL TRUSS TYPE D
(105 FT - 125 FT)**

(SPECIAL DETAIL)
F.H.W.A. APPROVAL

PLAN DATE

SIGN-500-B

SHEET
1 OF 14

TRUSS DATA								
TRUSS SPAN (FT)	L1 (FT)	L2 (FT)	L3 (FT)	L4 (FT)	L5 (FT)	CAMBER (IN)	BOX TRUSS	ESTIMATED WEIGHT (LBS/FT)
105	22.5	20	20	20	22.5	1 ⁷ / ₈	7'-0" x 7'-0"	206
110	22.5	20	25	20	22.5	2	7'-0" x 7'-0"	206
115	22.5	25	20	25	22.5	2 ¹ / ₄	7'-0" x 7'-0"	206
120	27.5	20	25	20	27.5	2 ¹ / ₂	7'-0" x 7'-0"	206
125	27.5	25	20	25	27.5	2 ⁵ / ₈	7'-0" x 7'-0"	206

THE CAMBER GIVEN IN THE ABOVE TABLE IS THE ORDINATE AT THE CENTER OF THE ASSEMBLED TRUSS PRIOR TO DEAD LOAD DEFLECTION. ALLOWABLE CAMBER TOLERANCE FOR TRUSS IS $\pm 25\%$.

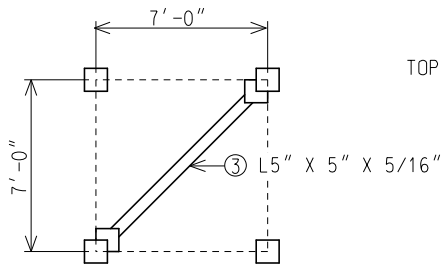
NOTES:

1. THE DESIGN OF THIS STRUCTURE IS BASED ON THE AASHTO STANDARD SPECIFICATIONS FOR STRUCTURAL SUPPORTS FOR HIGHWAY SIGNS, LUMINARIES AND TRAFFIC SIGNALS, CURRENT EDITION.
2. WELDING MUST BE IN CONFORMANCE WITH AMERICAN WELDING SOCIETY (AWS) D1.1:2010, STRUCTURAL WELDING CODE-STEEL (AS MODIFIED BY THE CURRENT 12SP-707A - STRUCTURAL STEEL AND ALUMINUM CONSTRUCTION), HEREAFTER CALLED AWS D1.1.
3. MAXIMUM SIGN AREA IS 500 SQUARE FEET FOR NO MORE THAN THREE SIGNS. MAXIMUM 6 FOOT SIGN PROJECTION ABOVE THE TOP CHORD.
4. HOT-DIP GALVANIZE (HDG) ALL TRUSS COMPONENTS PER ASTM A123 PRIOR TO BOLTED ASSEMBLY. HDG ALL FASTENER COMPONENTS PER ASTM A153. BLAST CLEAN BASE PLATES, STIFFENERS, AND ALL WELDMENTS PRIOR TO GALVANIZING.
5. PROVIDE 13/16" \emptyset HOLES FOR 3/4" \emptyset HIGH STRENGTH (HS) BOLTS FOR ALL CONNECTIONS UNLESS OTHERWISE STATED. PROVIDE HIGH STRENGTH BOLTS, NUTS, AND WASHERS IN ACCORDANCE WITH SUBSECTION 906.07 OF THE MDOT STANDARD SPECIFICATIONS FOR CONSTRUCTION.
6. TIGHTEN ALL HIGH STRENGTH BOLTS BY THE TURN OF NUT METHOD PER SUBSECTION 707.03.D OF THE MDOT STANDARD SPECIFICATIONS FOR CONSTRUCTION.
7. DO NOT LIFT THE TRUSS BY THE WEB MEMBERS.
8. THE CAMBERING MUST BE PROVIDED IN THE FABRICATION SO THAT THE FLANGES ARE CORRECTLY SLOPED TO ASSURE OBTAINING FULL CONTACT IN THE RELAXED ASSEMBLED POSITION PRIOR TO SNUGGING UP THE FLANGE BOLTS. THE FLANGE BOLTS MUST NOT BE TIGHTENED IN AN ATTEMPT TO CLOSE ANY FLANGE MISALIGNMENT.
9. THE TRUSS SECTION LENGTHS TABULATED MAY BE INCREASED IN 5 FOOT INCREMENTS TO REDUCE THE NUMBER OF FIELD SPLICES.
10. THE MAXIMUM SECTION LENGTH MUST NOT EXCEED 40 FEET. ANY DEVIATION FROM THE DETAILS SHOWN ON THESE STANDARDS WILL REQUIRE APPROVED SHOP DRAWINGS BEFORE FABRICATION.
11. ALL WELDS MUST BE 100 PERCENT VISUAL TEST (VT) INSPECTED BY AN AWS CERTIFIED WELDING INSPECTOR (CWI). ALL FILLET WELDS (EXCEPT END CAP AND COLUMN CAP WELDS) MUST BE 25 PERCENT MAGNETIC PARTICLE TEST (MT) INSPECTED BY A TECHNICIAN QUALIFIED IN ACCORDANCE WITH AMERICAN SOCIETY OF NONDESTRUCTIVE TESTING (ASNT) LEVEL II. ALL COMPLETE JOINT PENETRATION (CJP) WELDS MUST BE 100 PERCENT ULTRASONIC TEST (UT) INSPECTED BY A TECHNICIAN QUALIFIED IN ACCORDANCE WITH ASNT LEVEL II.
12. SEE CURRENT MDOT SIGN SUPPORT TYPICAL PLAN SIGN-600-SERIES FOR SIGN FOUNDATION.
13. SEE CURRENT MDOT SIGN SUPPORT TYPICAL PLAN SIGN-700-SERIES FOR SIGN CONNECTION.
14. BASE PLATE (R) WARPAGE MUST NOT EXCEED 1/16 INCH PER FOOT.
15. HSS DENOTES HOLLOW STRUCTURAL SHAPE.

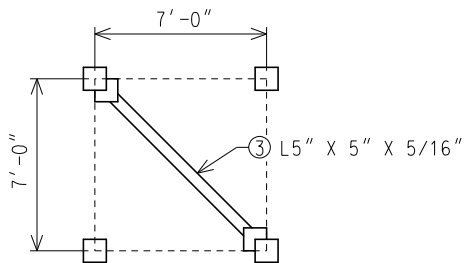
NOT TO SCALE

MICHIGAN DEPARTMENT OF TRANSPORTATION BUREAU OF DEVELOPMENT STANDARD PLAN	(SPECIAL DETAIL) F.H.W.A. APPROVAL	PLAN DATE	SIGN-500-B	SHEET 2 OF 14
--	---------------------------------------	-----------	------------	------------------

NOTE: THE ORIGINAL SIGNED COPY IS KEPT ON FILE AT THE MICHIGAN DEPARTMENT OF TRANSPORTATION.

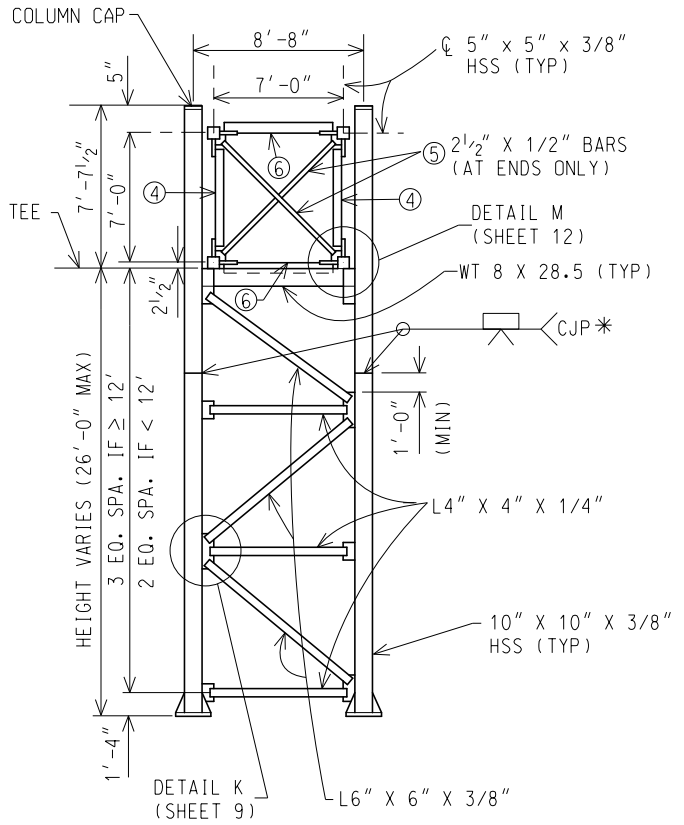


SECTION A-A



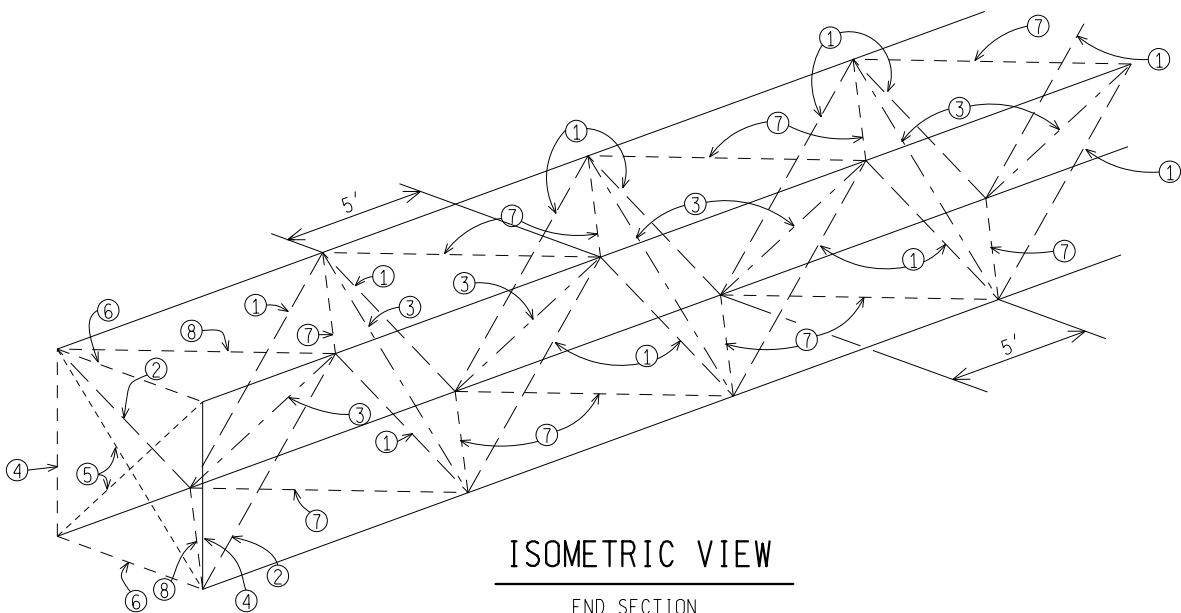
SECTION B-B

TOP OF STRUCTURAL TEE



END ELEVATION

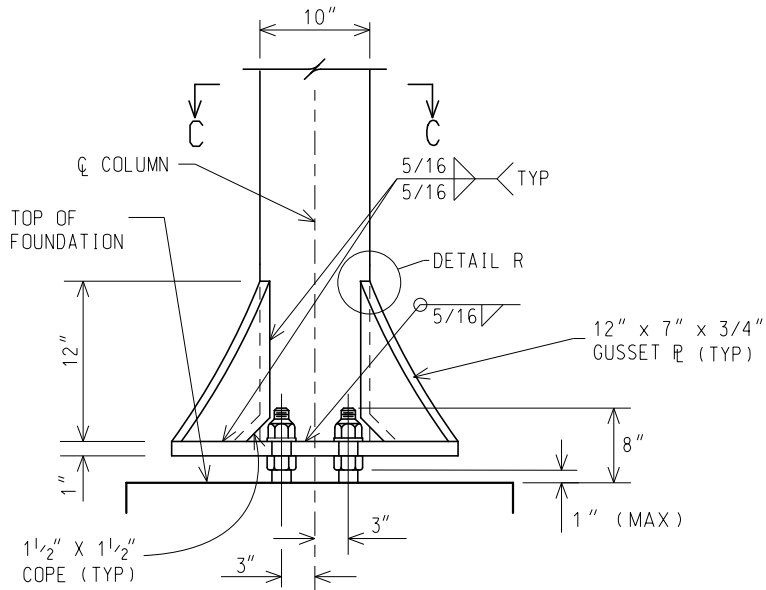
*OPTIONAL SPLICE



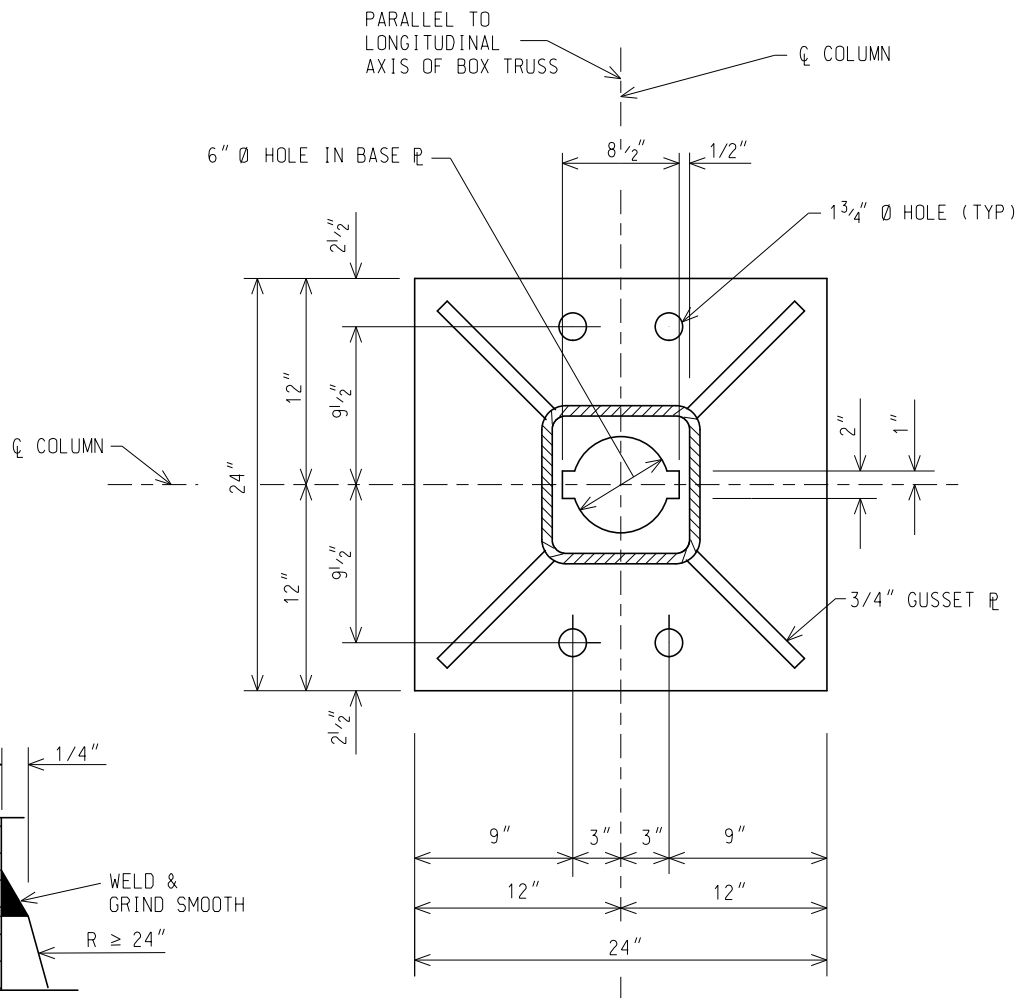
ISOMETRIC VIEW

END SECTION

NOT TO SCALE



COLUMN ELEVATION



DETAIL R

SECTION C-C

NOT TO SCALE

MICHIGAN DEPARTMENT OF TRANSPORTATION
BUREAU OF DEVELOPMENT STANDARD PLAN

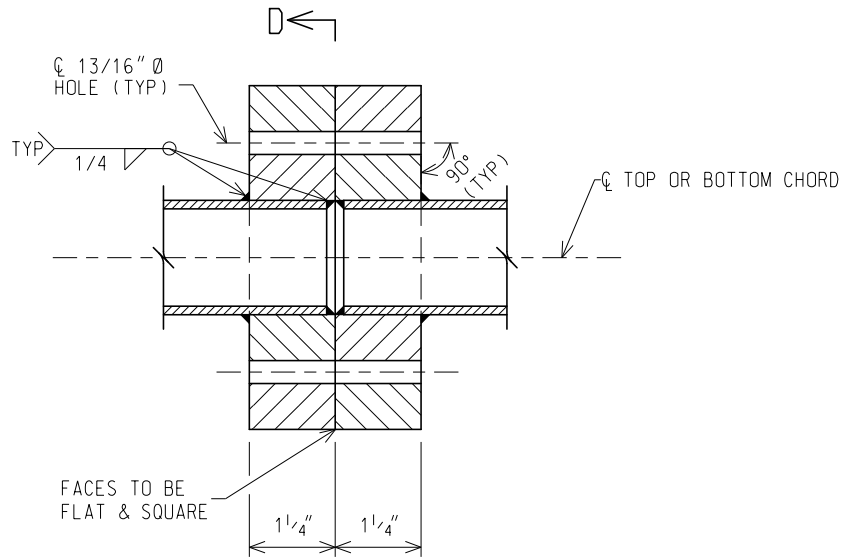
(SPECIAL DETAIL)
F.H.W.A. APPROVAL

PLAN DATE

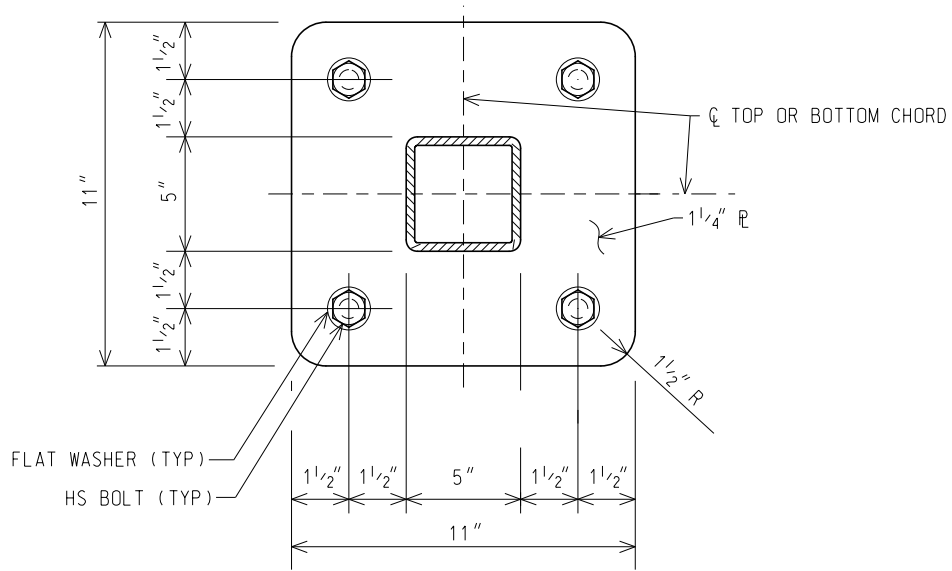
SIGN-500-B

SHEET
4 OF 14

NOTE: THE ORIGINAL SIGNED COPY IS KEPT ON FILE AT THE MICHIGAN DEPARTMENT OF TRANSPORTATION.



D ←
DETAIL A



SECTION D-D

TOP AND BOTTOM CHORD CONNECTION DETAILS

NOT TO SCALE

MICHIGAN DEPARTMENT OF TRANSPORTATION
 BUREAU OF DEVELOPMENT STANDARD PLAN

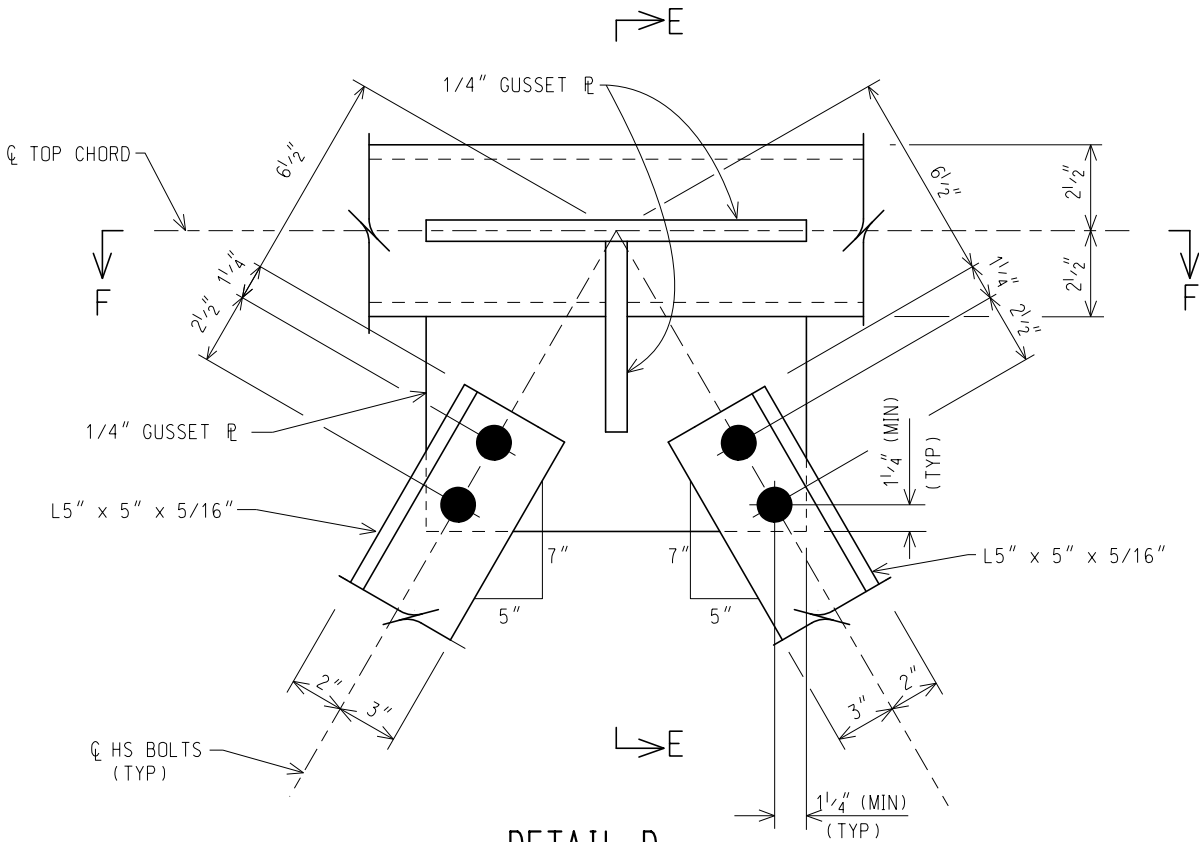
(SPECIAL DETAIL)
 F.H.W.A. APPROVAL

PLAN DATE

SIGN-500-B

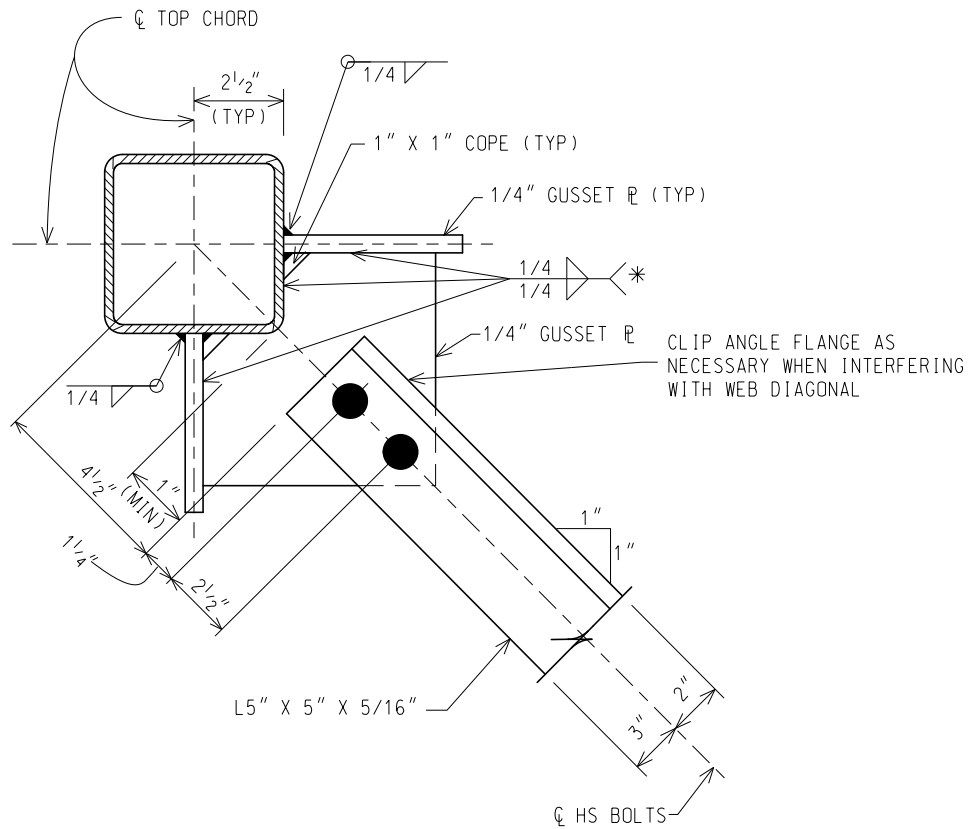
SHEET
 5 OF 14

NOTE: THE ORIGINAL SIGNED COPY IS KEPT ON FILE AT THE MICHIGAN DEPARTMENT OF TRANSPORTATION.



DETAIL D

TOP CHORD TO DIAGONAL CONNECTION DETAIL



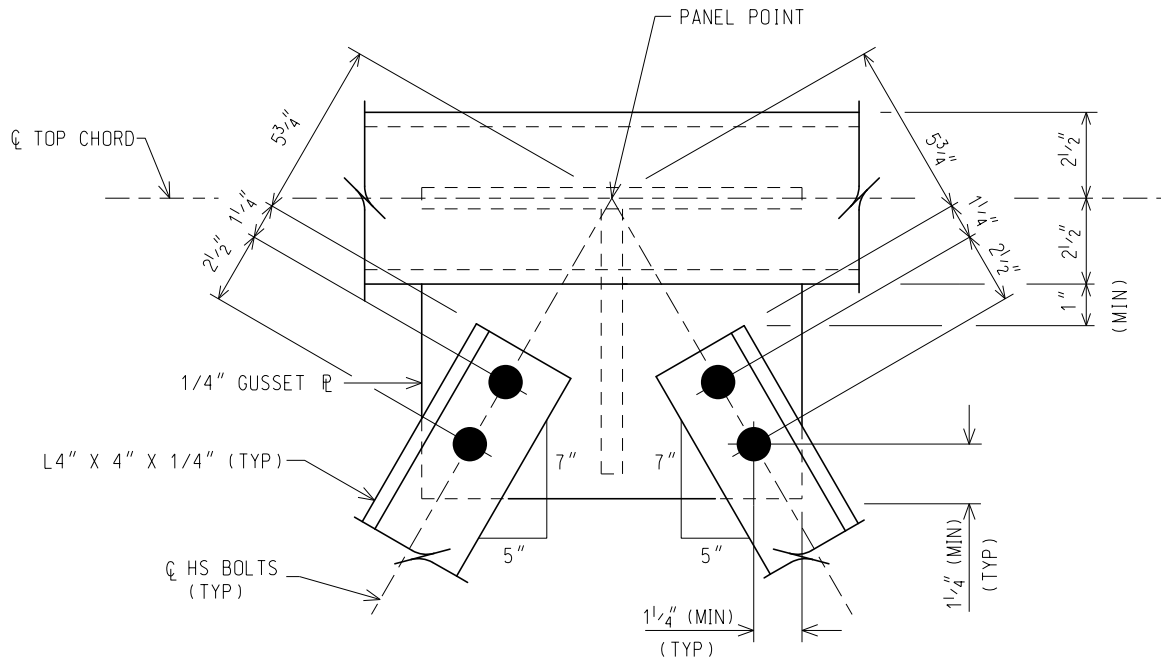
SECTION E-E

NOT TO SCALE

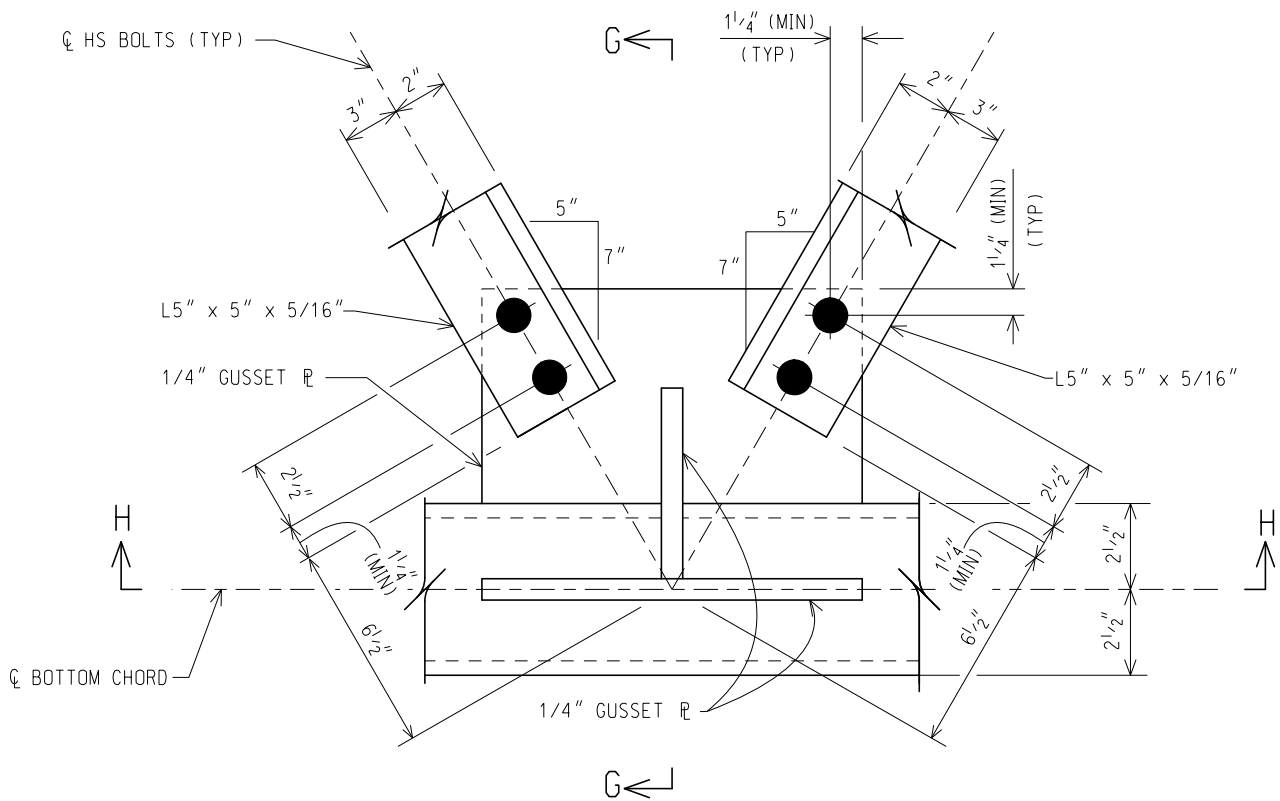
* WRAP WELD AROUND ENDS AND STOP 1/4" SHORT OF CLIP.

MICHIGAN DEPARTMENT OF TRANSPORTATION BUREAU OF DEVELOPMENT STANDARD PLAN	(SPECIAL DETAIL) F.H.W.A. APPROVAL	_____ PLAN DATE	SIGN-500-B	SHEET 6 OF 14
--	---------------------------------------	--------------------	------------	------------------

NOTE: THE ORIGINAL SIGNED COPY IS KEPT ON FILE AT THE MICHIGAN DEPARTMENT OF TRANSPORTATION.



SECTION F-F



DETAIL E

BOTTOM CHORD TO DIAGONAL CONNECTION DETAIL

NOT TO SCALE

MICHIGAN DEPARTMENT OF TRANSPORTATION
BUREAU OF DEVELOPMENT STANDARD PLAN

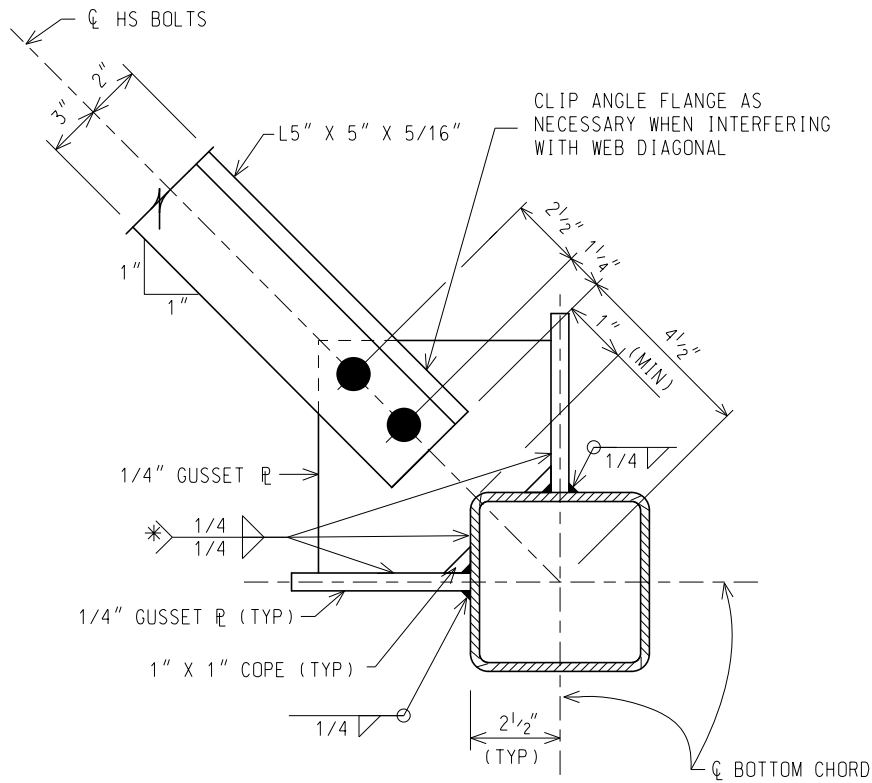
(SPECIAL DETAIL)
F.H.W.A. APPROVAL

PLAN DATE

SIGN-500-B

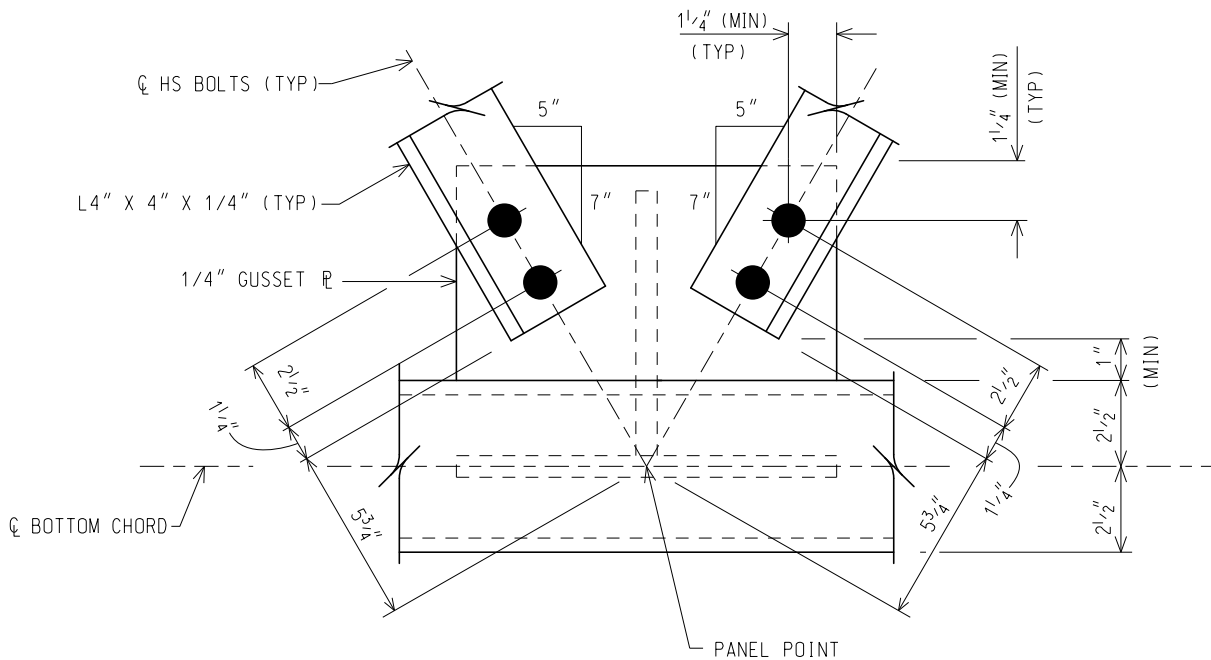
SHEET
7 OF 14

NOTE: THE ORIGINAL SIGNED COPY IS KEPT ON FILE AT THE MICHIGAN DEPARTMENT OF TRANSPORTATION.



SECTION G-G

* WRAP WELD AROUND ENDS AND STOP 1/4" SHORT OF CLIP.



SECTION H-H

NOT TO SCALE

MICHIGAN DEPARTMENT OF TRANSPORTATION
BUREAU OF DEVELOPMENT STANDARD PLAN

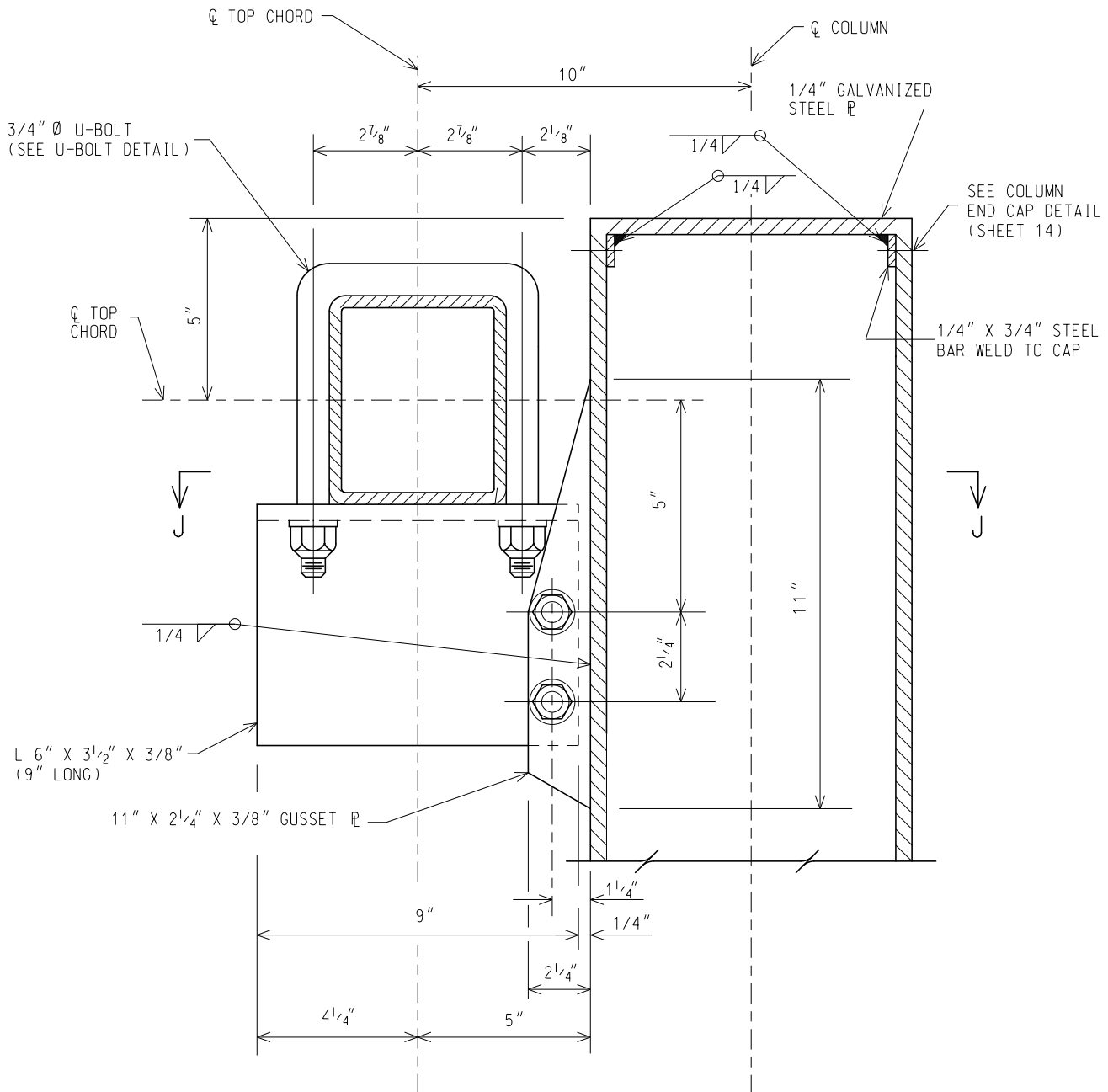
(SPECIAL DETAIL)
F.H.W.A. APPROVAL

PLAN DATE

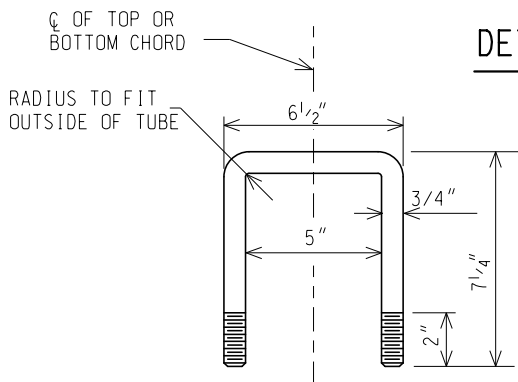
SIGN-500-B

SHEET
8 OF 14

NOTE: THE ORIGINAL SIGNED COPY IS KEPT ON FILE AT THE MICHIGAN DEPARTMENT OF TRANSPORTATION.



DETAIL OF UPPER CLAMP



U-BOLT DETAIL

(12 REQUIRED)

3/4" Ø STAINLESS STEEL BOLT WITH FLAT 3/16" Ø THICK WASHER AND 3/4" Ø NYLON INSERT LOCKNUT (TYP)

NOT TO SCALE

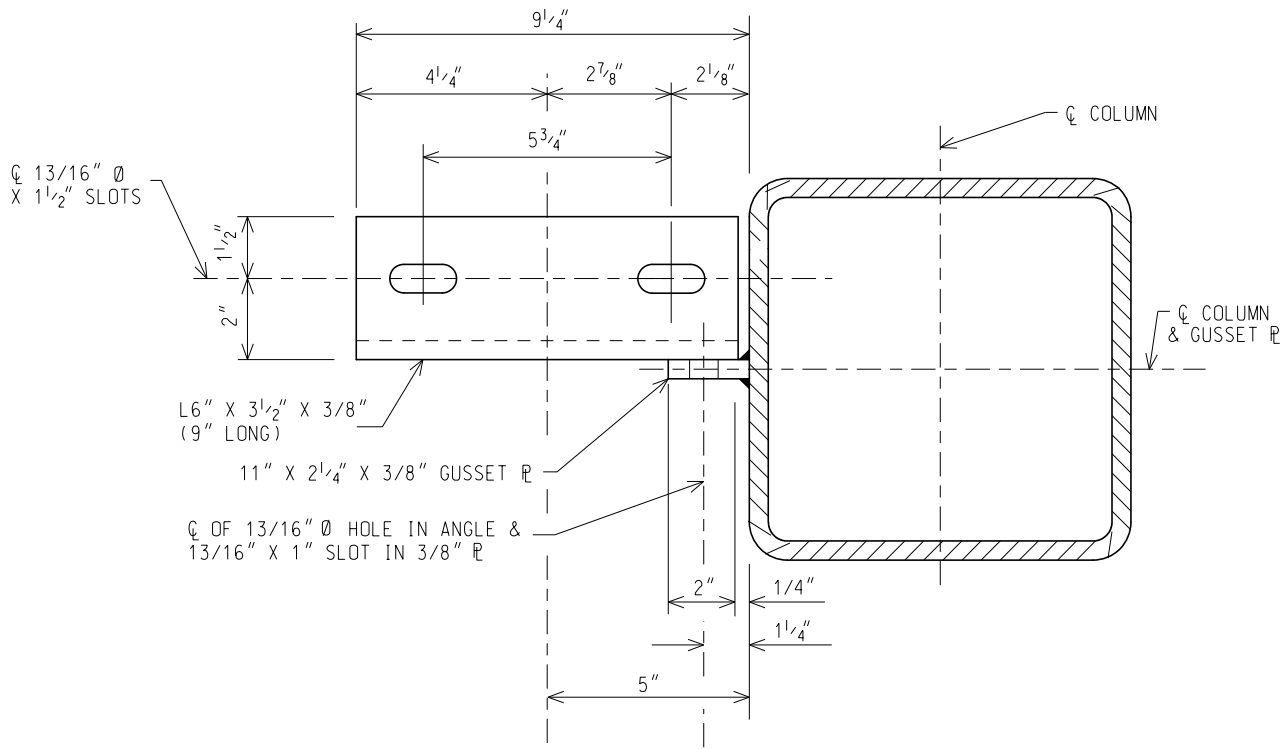
MICHIGAN DEPARTMENT OF TRANSPORTATION
BUREAU OF DEVELOPMENT STANDARD PLAN

(SPECIAL DETAIL)
F.H.W.A. APPROVAL

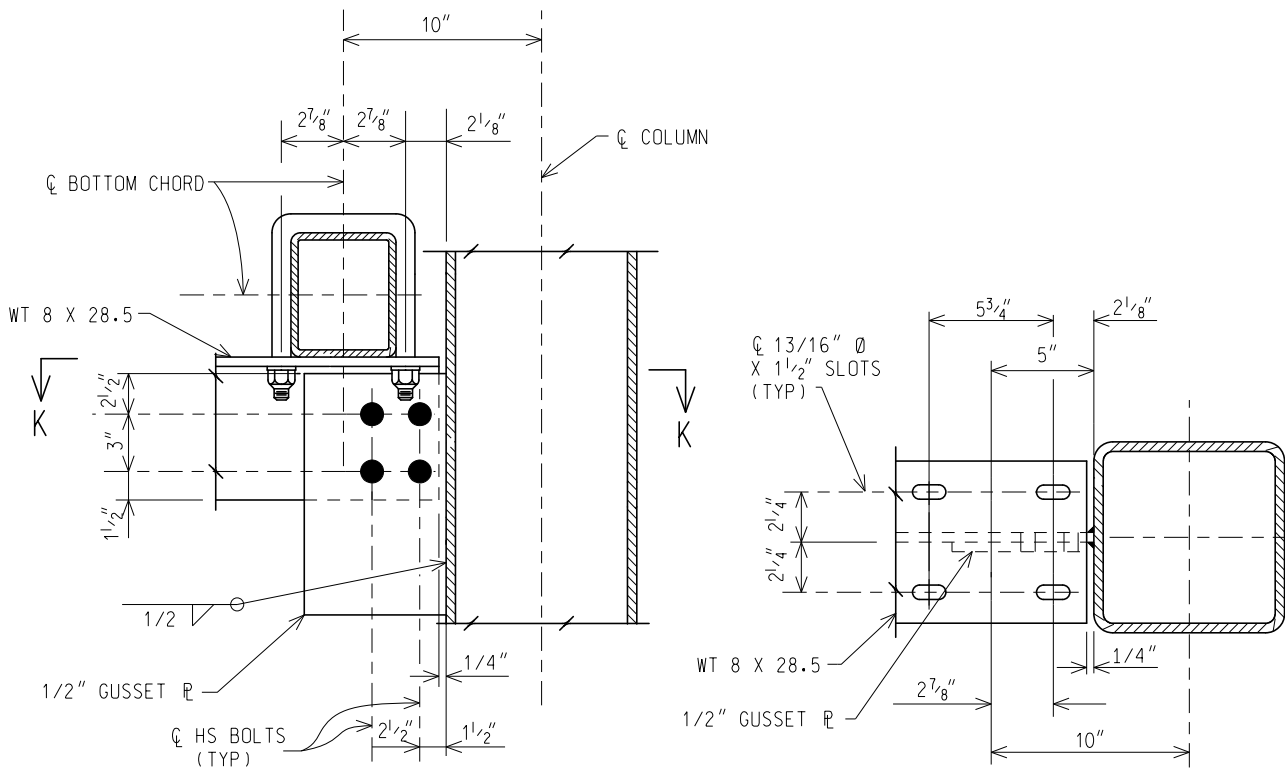
PLAN DATE

SIGN-500-B

SHEET
10 OF 14



SECTION J-J



SEAT DETAIL

SECTION K-K

DIAGONAL ANGLE NOT SHOWN FOR CLARITY
(SEE SHEET 12 FOR DIMENSIONS OF DIAGONAL ANGLE)

NOT TO SCALE

MICHIGAN DEPARTMENT OF TRANSPORTATION
BUREAU OF DEVELOPMENT STANDARD PLAN

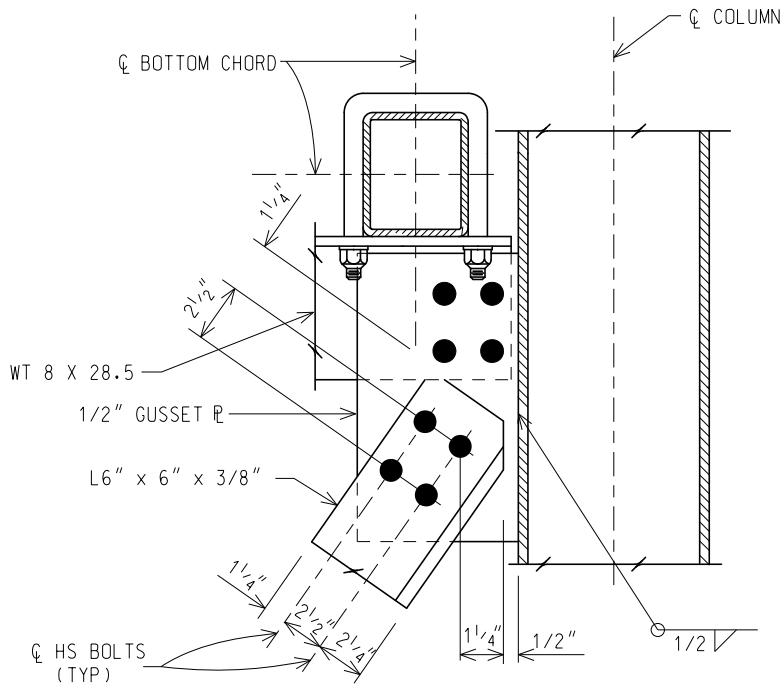
(SPECIAL DETAIL)
F.H.W.A. APPROVAL

PLAN DATE

SIGN-500-B

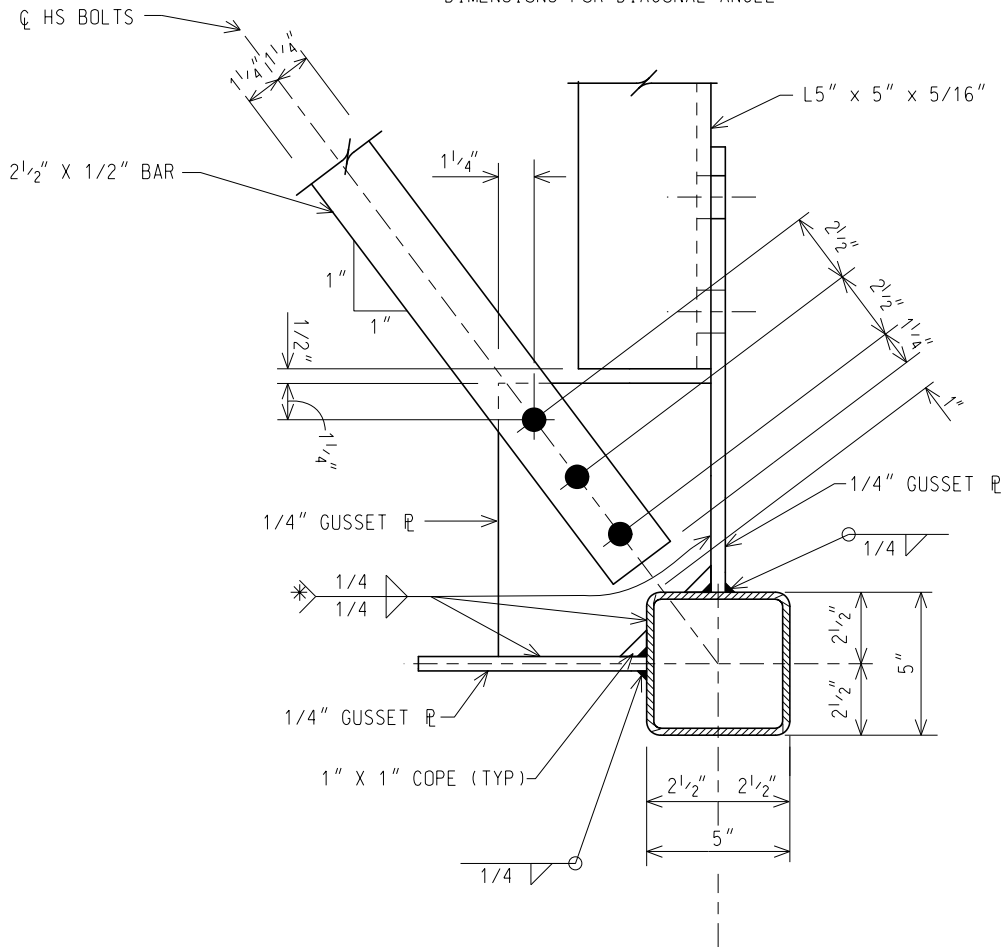
SHEET
11 OF 14

NOTE: THE ORIGINAL SIGNED COPY IS KEPT ON FILE AT THE MICHIGAN DEPARTMENT OF TRANSPORTATION.



SEAT DETAIL

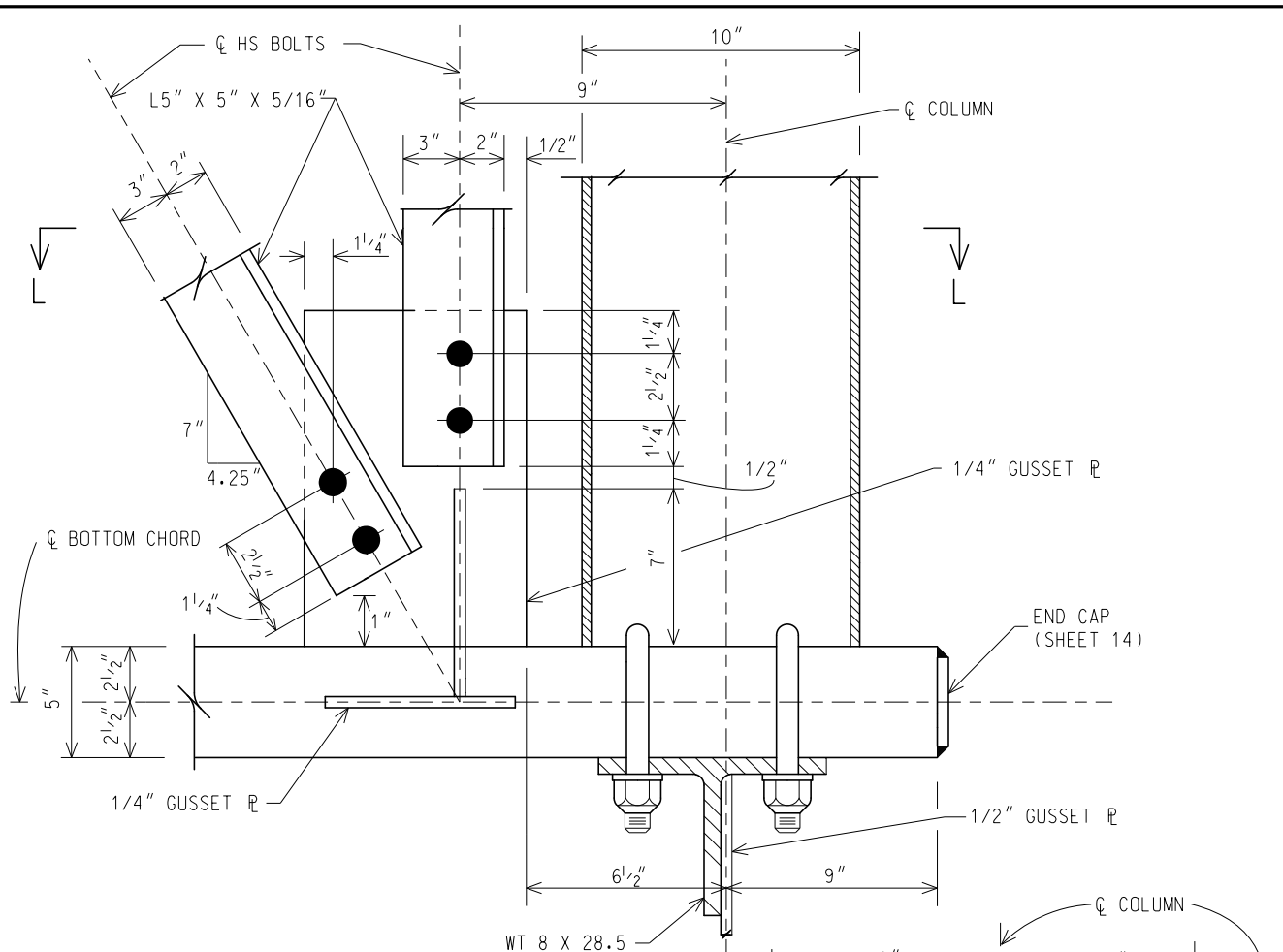
DIMENSIONS FOR DIAGONAL ANGLE



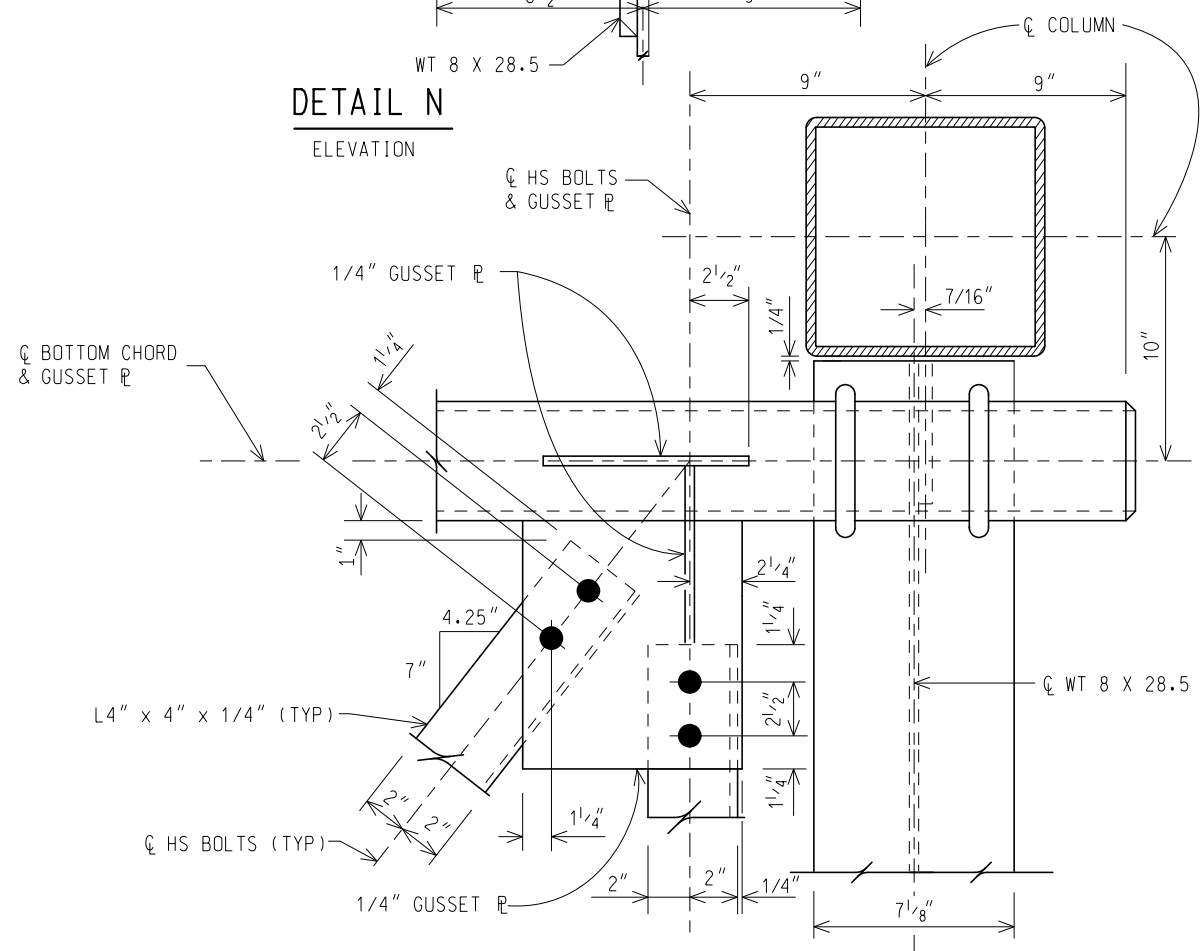
DETAIL M

* WRAP WELD AROUND ENDS AND STOP 1/4" SHORT OF CLIP.

NOT TO SCALE



DETAIL N
ELEVATION



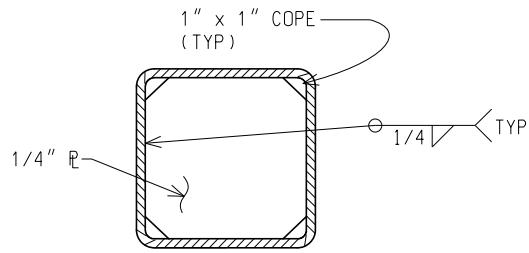
SECTION L-L

BOTTOM WINDBRACING PLAN

NOT TO SCALE

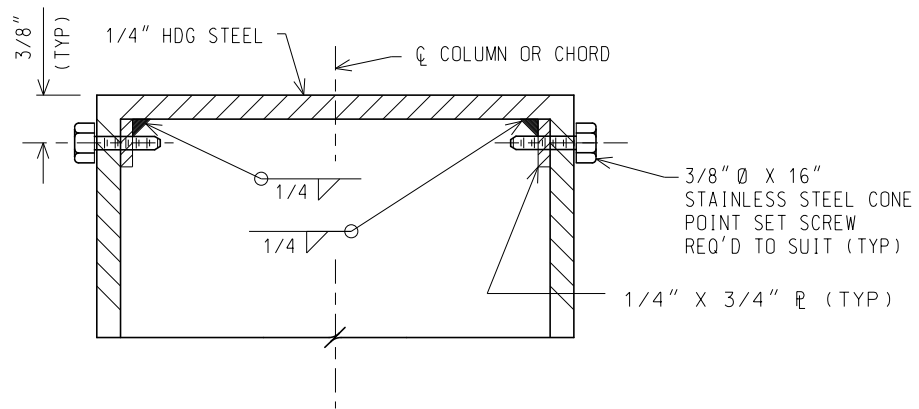
MICHIGAN DEPARTMENT OF TRANSPORTATION BUREAU OF DEVELOPMENT STANDARD PLAN	(SPECIAL DETAIL) F.H.W.A. APPROVAL	_____ PLAN DATE	SIGN-500-B	SHEET 13 OF 14
--	---------------------------------------	--------------------	------------	-------------------

NOTE: THE ORIGINAL SIGNED COPY IS KEPT ON FILE AT THE MICHIGAN DEPARTMENT OF TRANSPORTATION.



END CAP DETAIL

SEAL END OF CHORD WITH 1/4" R (WELD BEFORE GALVANIZING)
 OPTIONAL: CAP WITH SET SCREWS MAY BE USED AS END CAP (SEE COLUMN END CAP DETAILS)



COLUMN CAP DETAIL

NOT TO SCALE

MICHIGAN DEPARTMENT OF TRANSPORTATION
 BUREAU OF DEVELOPMENT STANDARD PLAN

(SPECIAL DETAIL)
 F.H.W.A. APPROVAL

PLAN DATE

SIGN-500-B

SHEET
 14 OF 14

NOTE: THE ORIGINAL SIGNED COPY IS KEPT ON FILE AT THE MICHIGAN DEPARTMENT OF TRANSPORTATION.