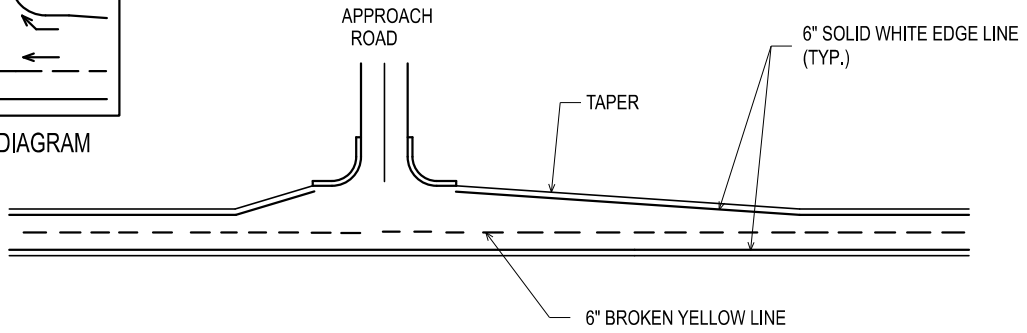
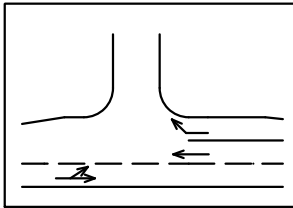


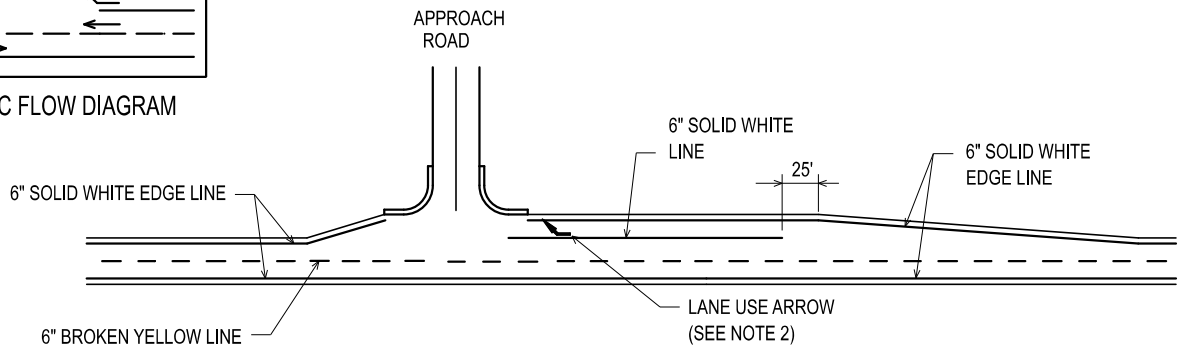
TRAFFIC FLOW DIAGRAM



INTERSECTION WITH RIGHT TURN TAPER



TRAFFIC FLOW DIAGRAM



INTERSECTION WITH RIGHT TURN LANE

NOTES:

1. PAINT INTERSECTION TAPERS GREATER THAN 50 FT IN LENGTH.
2. ARROW MARKINGS SHOULD BE INSTALLED ACCORDING TO PAVE-900, PAVE-935 AND PAVE-940, IF APPLICABLE.
3. WHERE THE PAVED SHOULDER IS 5 FT OR GREATER IN WIDTH APPROACHING AN INTERSECTION, RADIUS THE EDGE LINE TO THE CURB/EDGE OF PAVEMENT ON BOTH SIDES OF THE INTERSECTION. FOR NARROWER SHOULDERS, THE EDGE LINE MAY BE SIMPLY DISCONTINUED ACROSS THE INTERSECTION (BLUNT ENDS).

NOT TO SCALE

APPROVED BY: _____
DIRECTOR, BUREAU OF FIELD SERVICES

APPROVED BY: _____
DIRECTOR, BUREAU OF DEVELOPMENT



DEPARTMENT DIRECTOR
BRADLEY C. WIEFERICH, PE

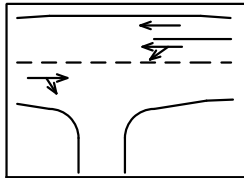
STANDARD PLAN FOR
PAVEMENT MARKINGS FOR
NON-SIGNALIZED INTERSECTIONS

11/22/2023
FHWA APPROVAL

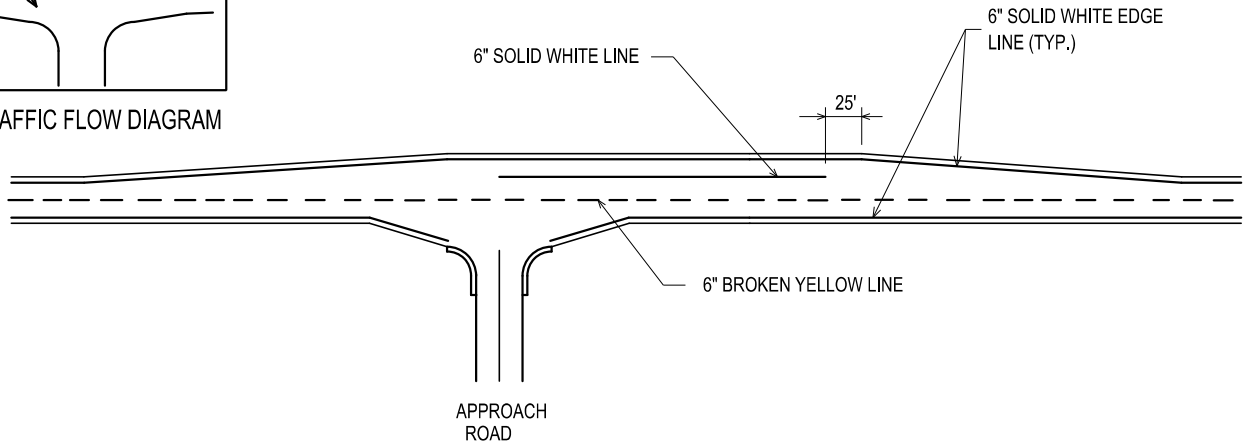
09/13/2023
PLAN DATE

PAVE-930-E

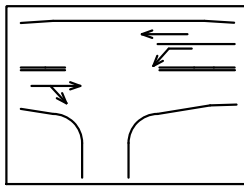
SHEET
1 OF 8



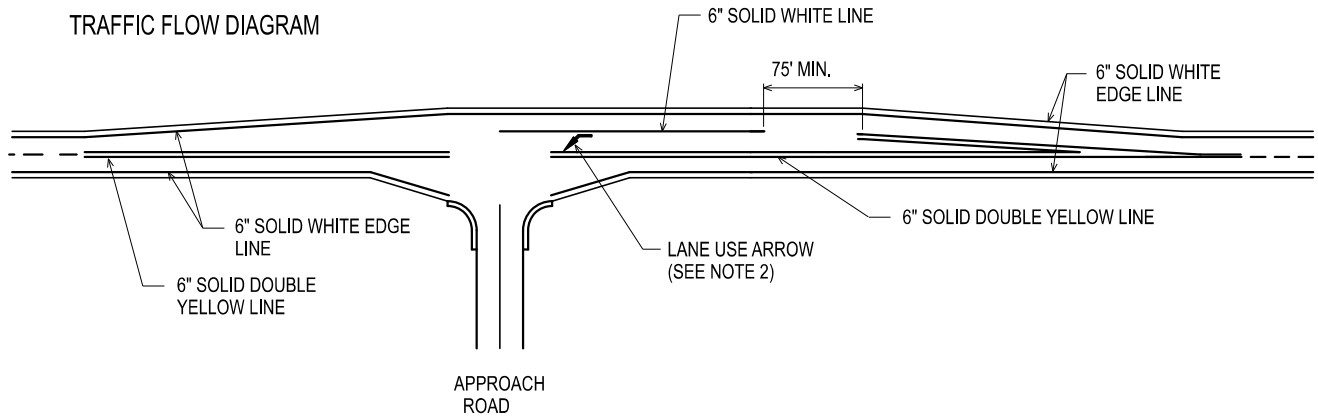
TRAFFIC FLOW DIAGRAM



"T" INTERSECTION WITH PASSING FLARE



TRAFFIC FLOW DIAGRAM



"T" INTERSECTION WITH MANDATORY LEFT TURN LANE

NOTES:

1. PAINT INTERSECTION TAPERS GREATER THAN 50 FT IN LENGTH.
2. ARROW MARKINGS SHOULD BE INSTALLED ACCORDING TO PAVE-900, PAVE-935 AND PAVE-940, IF APPLICABLE.
3. WHERE THE PAVED SHOULDER IS 5 FT OR GREATER IN WIDTH APPROACHING AN INTERSECTION, RADIUS THE EDGE LINE TO THE CURB/EDGE OF PAVEMENT ON BOTH SIDES OF THE INTERSECTION. FOR NARROWER SHOULDERS, THE EDGE LINE MAY BE SIMPLY DISCONTINUED ACROSS THE INTERSECTION (BLUNT ENDS).



DEPARTMENT DIRECTOR
BRADLEY C. WIEFERICH, PE

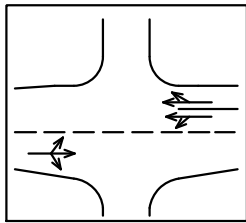
STANDARD PLAN FOR
PAVEMENT MARKINGS FOR
NON-SIGNALIZED INTERSECTIONS

11/22/2023
FHWA APPROVAL

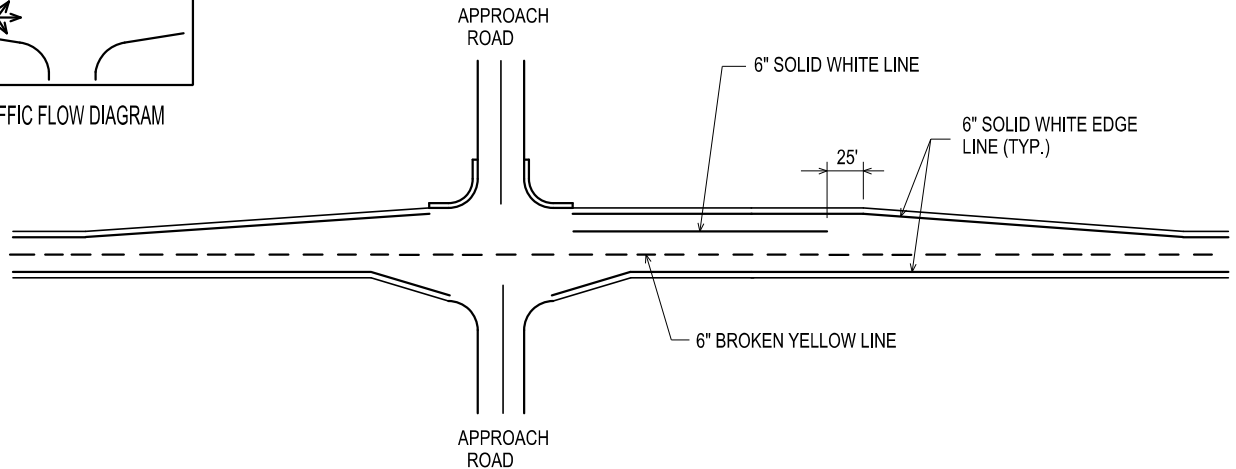
09/13/2023
PLAN DATE

PAVE-930-E

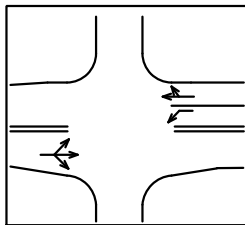
SHEET
2 OF 8



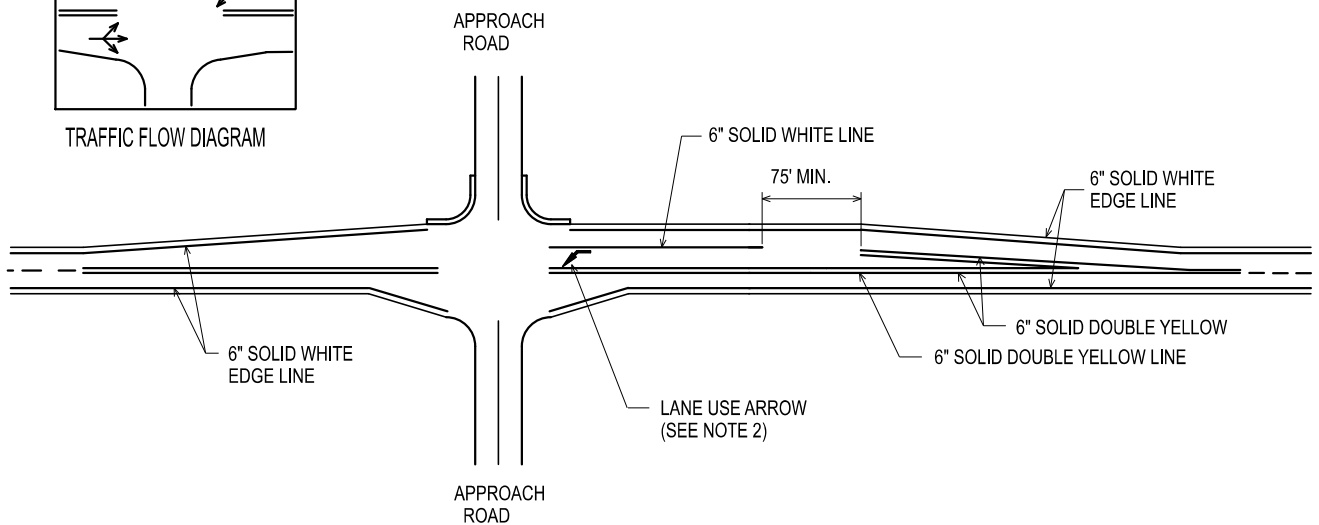
TRAFFIC FLOW DIAGRAM



FULL INTERSECTION WITH PASSING FLARE



TRAFFIC FLOW DIAGRAM



FULL INTERSECTION WITH MANDATORY LEFT TURN LANE

NOTES:

1. PAINT INTERSECTION TAPERS GREATER THAN 50 FT IN LENGTH.
2. ARROW MARKINGS SHOULD BE INSTALLED ACCORDING TO PAVE-900, PAVE-935 AND PAVE-940, IF APPLICABLE.
3. WHERE THE PAVED SHOULDER IS 5 FT OR GREATER IN WIDTH APPROACHING AN INTERSECTION, RADIUS THE EDGE LINE TO THE CURB/EDGE OF PAVEMENT ON BOTH SIDES OF THE INTERSECTION. FOR NARROWER SHOULDERS, THE EDGE LINE MAY BE SIMPLY DISCONTINUED ACROSS THE INTERSECTION (BLUNT ENDS).



DEPARTMENT DIRECTOR
BRADLEY C. WIEFERICH, PE

STANDARD PLAN FOR
PAVEMENT MARKINGS FOR
NON-SIGNALIZED INTERSECTIONS

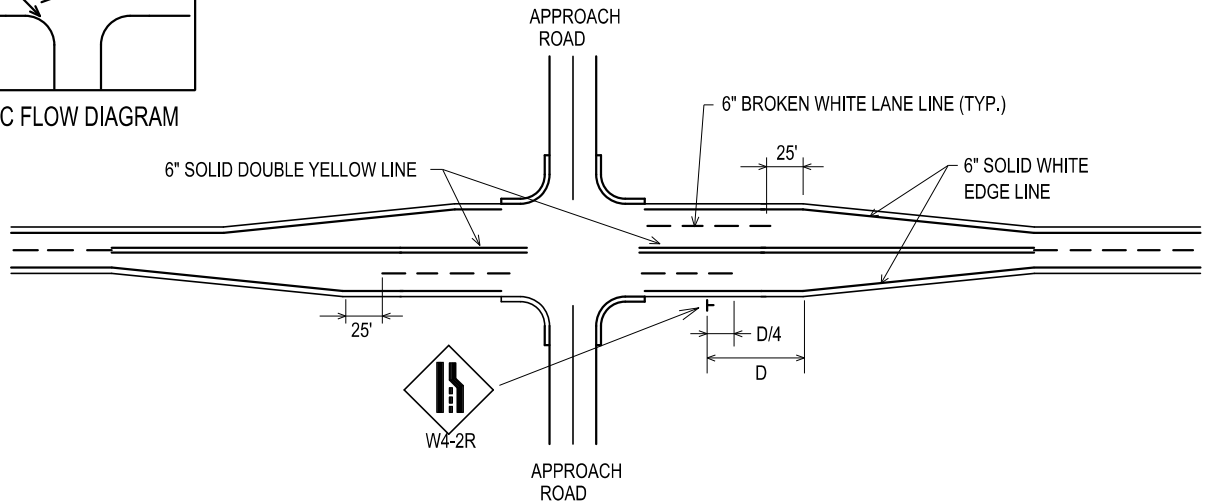
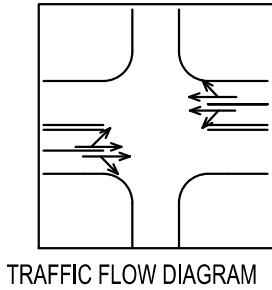
11/22/2023
FHWA APPROVAL

09/13/2023
PLAN DATE

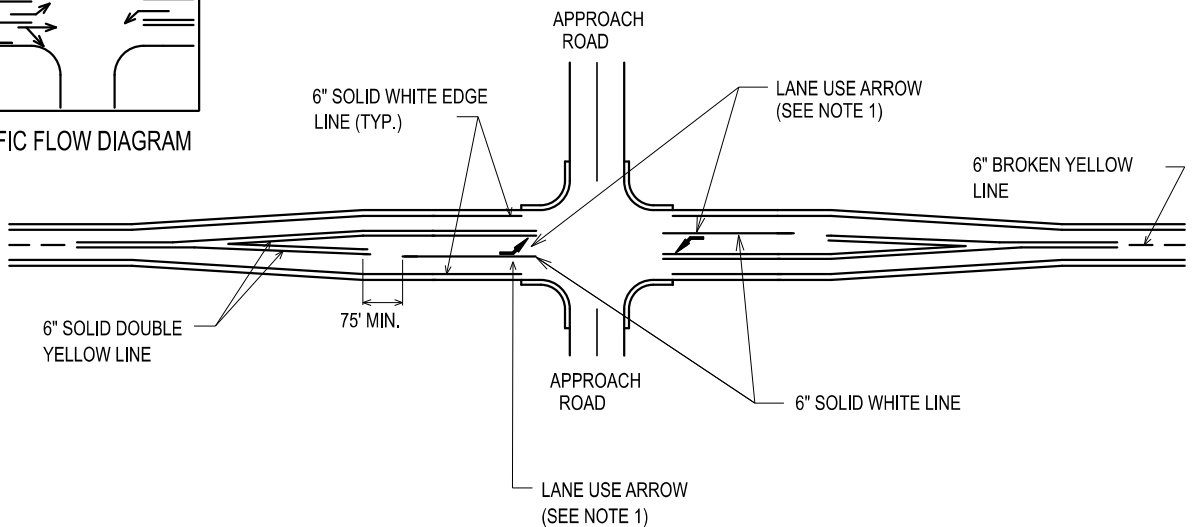
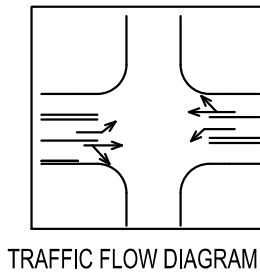
PAVE-930-E

SHEET
3 OF 8

NOT TO SCALE



FULL INTERSECTION WITH FAR SIDE LANE DROP



FULL INTERSECTION WITH PARTIAL FLARE WITH DEVELOPED CENTER LEFT-TURN LANE

(MAJOR CROSS STREET)

NOTES:

1. ARROW MARKINGS SHOULD BE INSTALLED ACCORDING TO PAVE-900, PAVE-935 AND PAVE-940, IF APPLICABLE.
2. WHERE THE PAVED SHOULDER IS 5 FT OR GREATER IN WIDTH APPROACHING AN INTERSECTION, RADIUS THE EDGE LINE TO THE CURB/EDGE OF PAVEMENT ON BOTH SIDES OF THE INTERSECTION. FOR NARROWER SHOULDER, THE EDGE LINE MAY BE SIMPLY DISCONTINUED ACROSS THE INTERSECTION (BLUNT ENDS).

NOT TO SCALE



DEPARTMENT DIRECTOR
BRADLEY C. WIEFERICH, PE

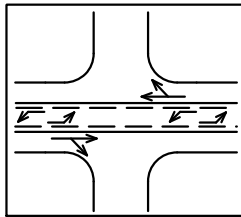
STANDARD PLAN FOR
PAVEMENT MARKINGS FOR
NON-SIGNALIZED INTERSECTIONS

11/22/2023
FHWA APPROVAL

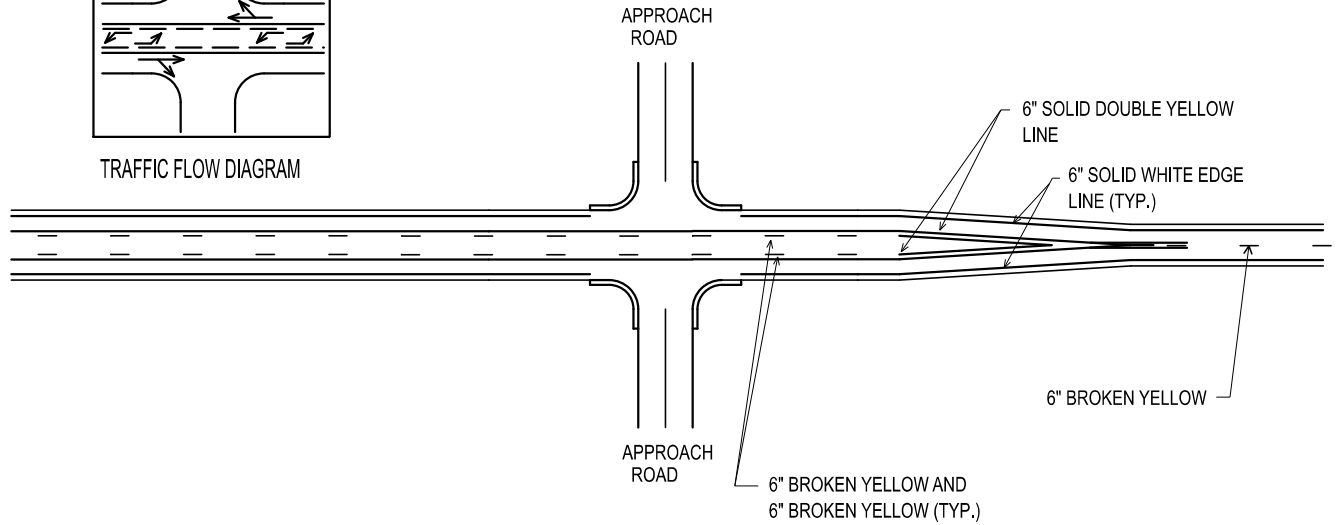
09/13/2023
PLAN DATE

PAVE-930-E

SHEET
4 OF 8

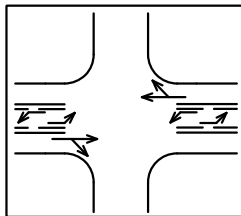


TRAFFIC FLOW DIAGRAM

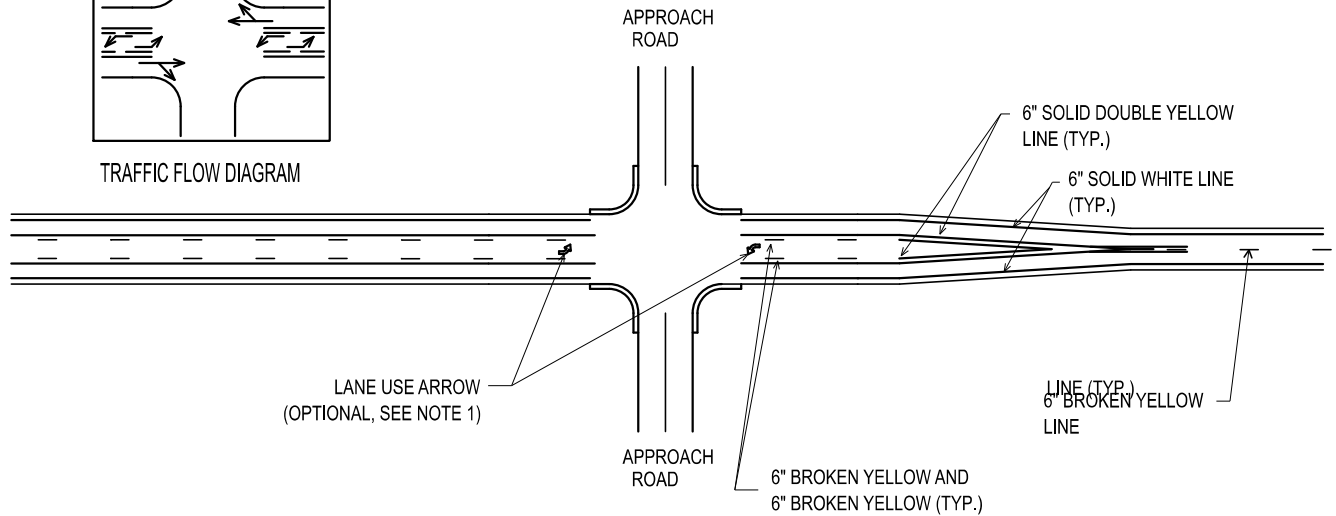


**FULL INTERSECTION PARTIAL FLARE WITH DEVELOPED
CENTER LEFT-TURN LANE - CONVENTIONAL MARKINGS**

(MINOR CROSS STREET)



TRAFFIC FLOW DIAGRAM



**FULL INTERSECTION PARTIAL FLARE WITH DEVELOPED
CENTER LEFT-TURN LANE - ALTERNATE MARKING**

(MINOR CROSS STREET)

NOTES:

1. ARROW MARKINGS SHOULD BE INSTALLED ACCORDING TO PAVE-900, PAVE-935 AND PAVE-940, IF APPLICABLE.
2. WHERE THE PAVED SHOULDER IS 5 FT OR GREATER IN WIDTH APPROACHING AN INTERSECTION, RADIUS THE EDGE LINE TO THE CURB/EDGE OF PAVEMENT ON BOTH SIDES OF THE INTERSECTION. FOR NARROWER SHOULDER, THE EDGE LINE MAY BE SIMPLY DISCONTINUED ACROSS THE INTERSECTION (BLUNT ENDS).

NOT TO SCALE



DEPARTMENT DIRECTOR
BRADLEY C. WIEFERICH, PE

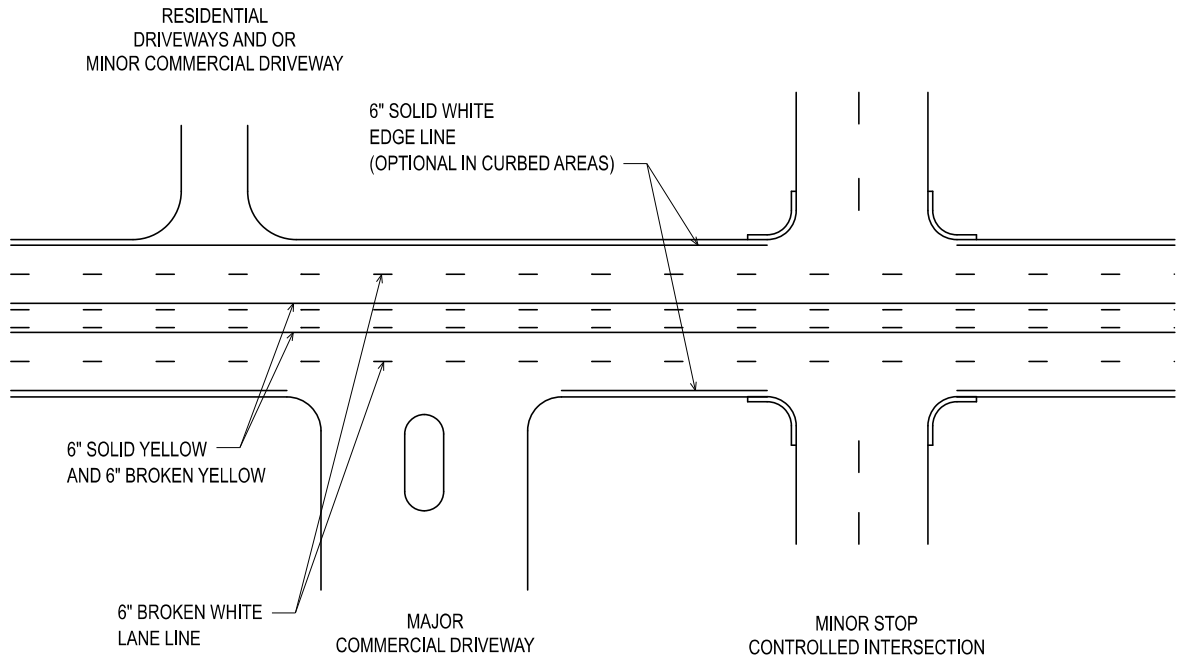
STANDARD PLAN FOR
PAVEMENT MARKINGS FOR
NON-SIGNALIZED INTERSECTIONS

11/22/2023
FHWA APPROVAL

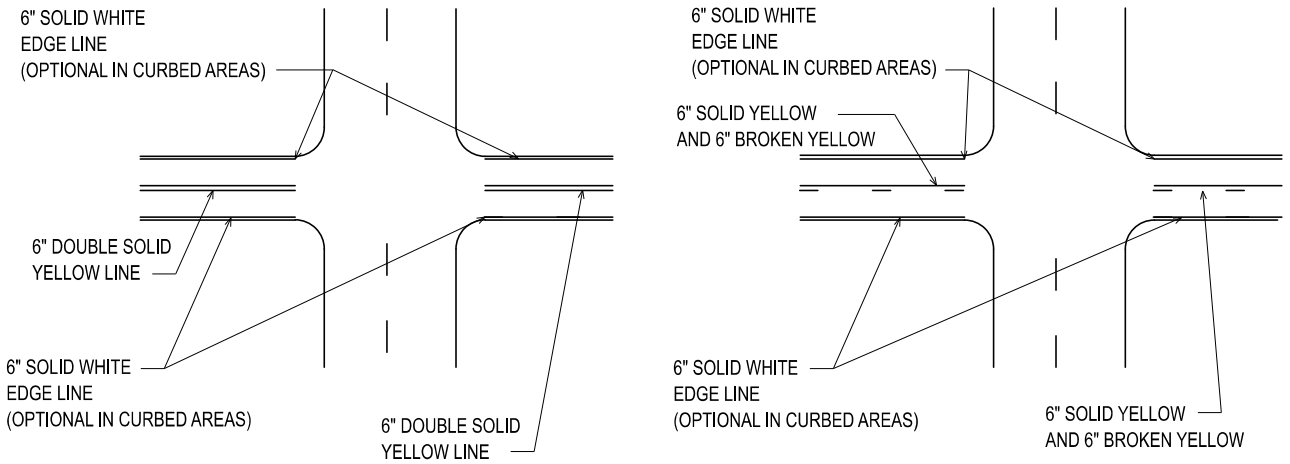
09/13/2023
PLAN DATE

PAVE-930-E

SHEET
5 OF 8



**STRIPING THROUGH MINOR (STOP CONTROLLED)
INTERSECTIONS AND DRIVEWAYS**



**GAPPING INTERSECTIONS AT
MINOR (STOP CONTROLLED) STREETS**

NOTES:

1. WHERE THE PAVED SHOULDER IS 5 FT OR GREATER IN WIDTH APPROACHING AN INTERSECTION, RADIUS THE EDGE LINE TO THE CURB/EDGE OF PAVEMENT ON BOTH SIDES OF THE INTERSECTION. FOR NARROWER SHOULDERS, THE EDGE LINE MAY BE SIMPLY DISCONTINUED ACROSS THE INTERSECTION (BLUNT ENDS).

NOT TO SCALE



DEPARTMENT DIRECTOR
BRADLEY C. WIEFERICH, PE

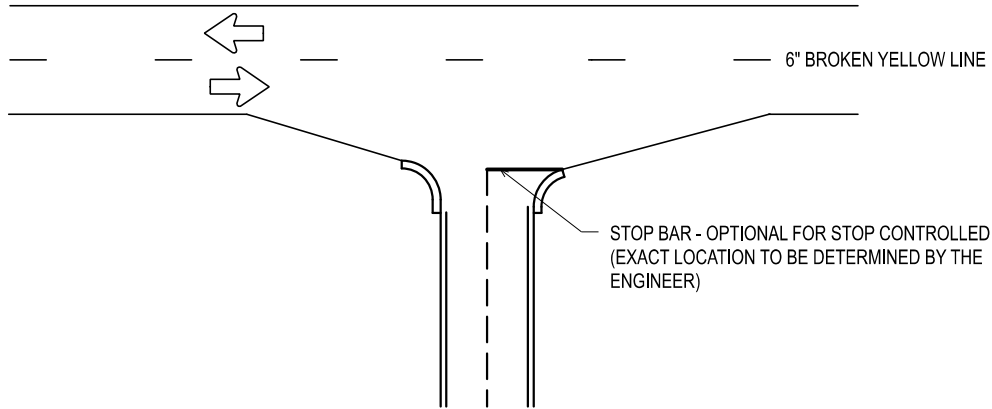
STANDARD PLAN FOR
PAVEMENT MARKINGS FOR
NON-SIGNALIZED INTERSECTIONS

11/22/2023
FHWA APPROVAL

09/13/2023
PLAN DATE

PAVE-930-E

SHEET
6 OF 8



STOP BAR DETAIL

(TRUNKLINE TO TRUNKLINE "T" INTERSECTION)

NOTES:

1. THE WIDTH OF STOP BARS SHALL BE 24 IN.
2. STOP BARS SHOULD BE PLACED BETWEEN 4 FT AND 30 FT FROM THE NEAREST EDGE OF THE INTERSECTING ROADWAY.
3. TO MINIMIZE VEHICLE EXPOSURE TIME, STOP BARS SHOULD BE LOCATED AS NEAR THE INTERSECTING ROADWAY AS PRACTICAL.



DEPARTMENT DIRECTOR
BRADLEY C. WIEFERICH, PE

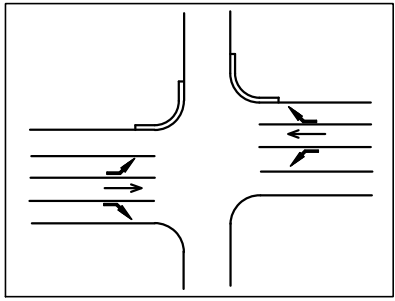
STANDARD PLAN FOR
PAVEMENT MARKINGS FOR
NON-SIGNALIZED INTERSECTIONS

11/22/2023
FHWA APPROVAL

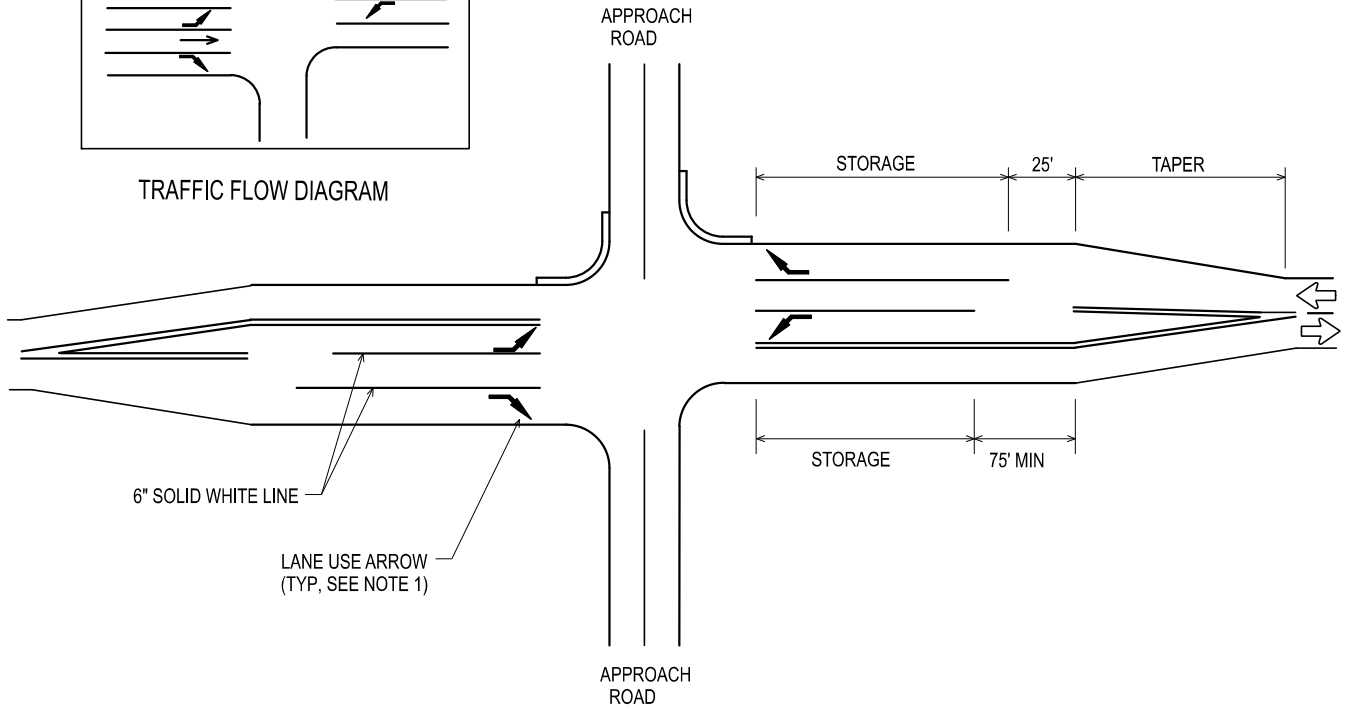
09/13/2023
PLAN DATE

PAVE-930-E

SHEET
7 OF 8



TRAFFIC FLOW DIAGRAM



RIGHT AND LEFT TURN LANES ON THE SAME APPROACH

NOTE:

1. ARROW MARKINGS SHOULD BE INSTALLED ACCORDING TO THE LAYOUTS SHOWN ON PAVE-900, PAVE-935 AND PAVE-940, IF APPLICABLE.
2. REFER TO GEO-650 FOR TAPER LENGTHS.


 Michigan Department of Transportation
 DEPARTMENT DIRECTOR
 BRADLEY C. WIEFERICH, PE

STANDARD PLAN FOR PAVEMENT MARKINGS FOR NON-SIGNALIZED INTERSECTIONS			
11/22/2023 FHWA APPROVAL	09/13/2023 PLAN DATE	PAVE-930-E	SHEET 8 OF 8

NOT TO SCALE