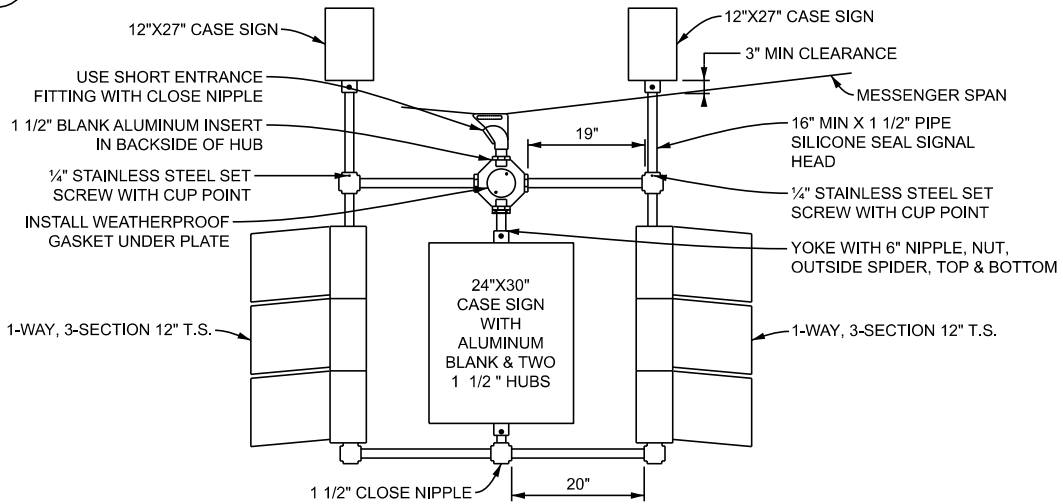
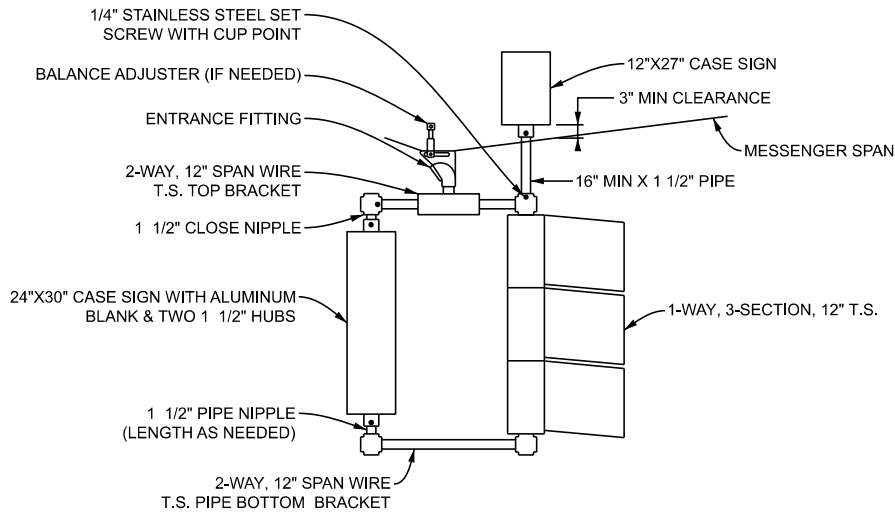


A DETAIL - PREFERRED METHOD 2-WAY T.S./CASE SIGN COMBINATION BELOW HUB
N.T.S.



B DETAIL - (ALTERNATE) 2-WAY T.S./CASE SIGN COMBINATION ABOVE HUB
N.T.S.



C DETAIL - 1-WAY T.S./CASE SIGN COMBINATION ABOVE HUB
N.T.S.

APPROVED BY: _____
DIRECTOR, BUREAU OF FIELD SERVICES

APPROVED BY: _____
DIRECTOR, BUREAU OF DEVELOPMENT



DEPARTMENT DIRECTOR
BRADLEY G. WIEFERICH, PE

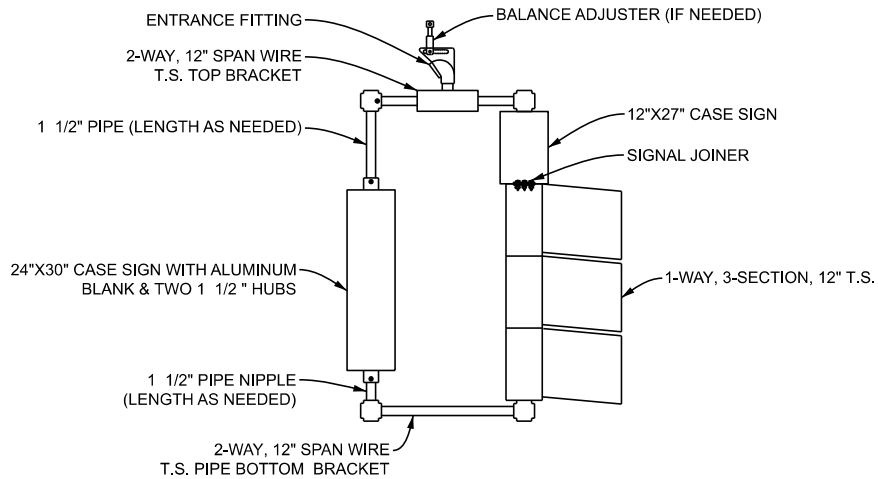
STANDARD PLAN FOR
**BRACKETING FOR SIGNAL
HEAD/CASE SIGN COMBINATIONS**

(SPECIAL DETAIL)
FHWA APPROVAL

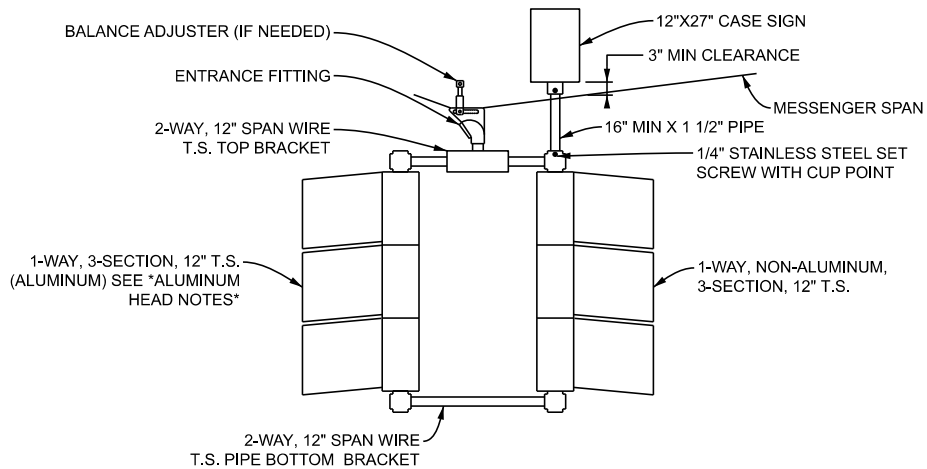
10/29/2024
PLAN DATE

SIG-311-A

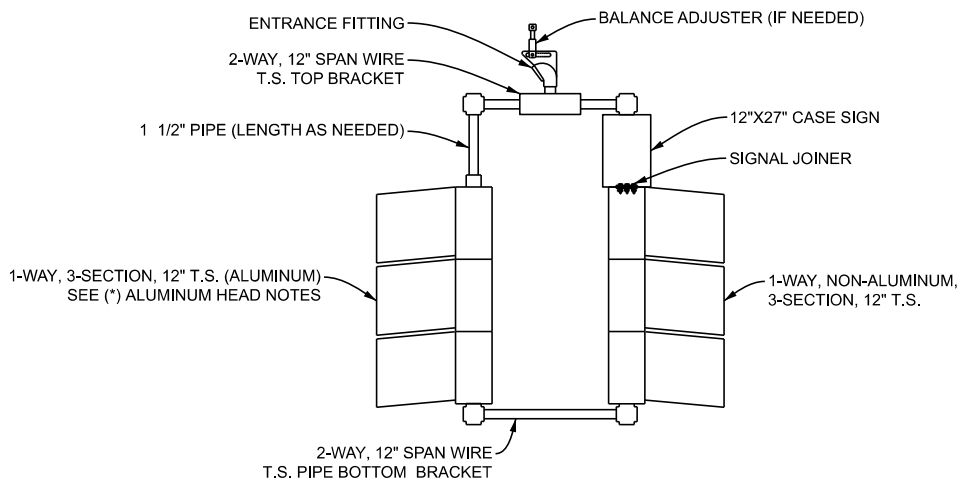
SHEET
1 OF 5



D DETAIL - 1-WAY T.S./CASE SIGN COMBINATION BELOW HUB
N.T.S.



E DETAIL - 1-WAY (ALUMINUM) & 1-WAY T.S./CASE SIGN COMBINATION ABOVE HUB
N.T.S.



(*) ALUMINUM HEAD NOTES:

- 6) TRAFFIC SIGNALS MUST CONFORM TO THE REQUIREMENTS OF THE CURRENT ITE PUBLICATION "VEHICLE TRAFFIC CONTROL SIGNAL HEADS."
- 7) PROVIDE CAST ALUM. ALLOY HOUSINGS WITH A 2" DIAM. HOLE TOP & BOTTOM TO RECEIVE 1 1/2" SUPPORTING PIPE.
- 8) PROVIDE A DETACHABLE, SHEET ALUM. VISOR (MIN. 0.057" THICK), FOR EACH SIGNAL INDICATION.
- 9) PROVIDE TWIST ON SLOTS FOR VISOR MOUNTING THAT ARE EITHER IN THE VISOR OR ON THE TABS FORMED ON THE VISOR.

F DETAIL - 1-WAY (ALUMINUM) & 1-WAY T.S./CASE SIGN COMBINATION BELOW HUB
N.T.S.



DEPARTMENT DIRECTOR
BRADLEY C. WIEFERICH, PE

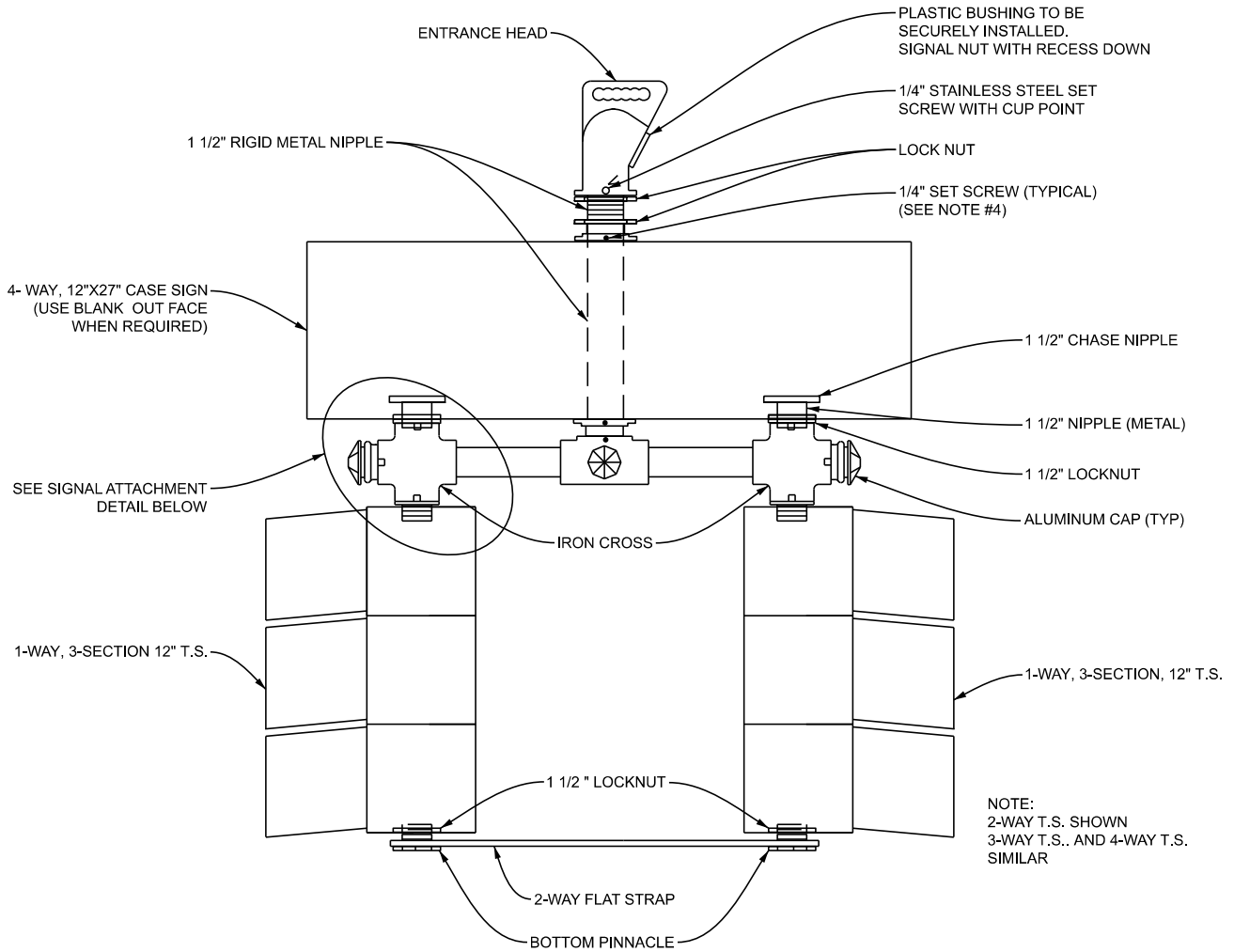
STANDARD PLAN FOR
**BRACKETING FOR SIGNAL
HEAD/CASE SIGN COMBINATIONS**

(SPECIAL DETAIL)
FHWA APPROVAL

10/29/2024
PLAN DATE

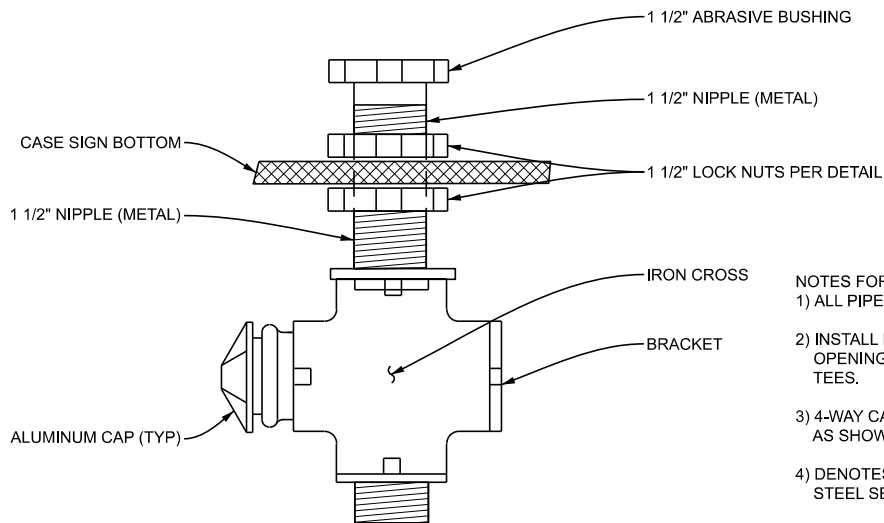
SIG-311-A

SHEET
2 OF 5



NOTE:
2-WAY T.S. SHOWN
3-WAY T.S.. AND 4-WAY T.S.
SIMILAR

G DETAIL - SPAN WIRE MOUNTED T.S. BRACKET ASSEMBLY WITH 4-WAY CASE SIGN COMBINATION BELOW HUB
N.T.S.



NOTES FOR ALL DETAILS:
1) ALL PIPE SIZES INCLUDE THREAD.
2) INSTALL PINNACLES IN ALL UNUSED
OPENINGS IN HUBS, CROSSES &
TEES.
3) 4-WAY CASE SIGN LEGEND TO BE
AS SHOWN ON PLANS.
4) DENOTES 1/4" STAINLESS
STEEL SET SCREW (TYPICAL).
5) APPLY SILICON SEALANT TO THE
FITTINGS ON THE TOP OF CASE
SIGNS, AND THE TOP AND BOTTOM
CONNECTIONS OF SIGNAL HEADS.

H DETAIL - SIGNAL ATTACHMENT DETAIL
N.T.S.

APPROVED BY: _____
DIRECTOR, BUREAU OF FIELD SERVICES

APPROVED BY: _____
DIRECTOR, BUREAU OF DEVELOPMENT



DEPARTMENT DIRECTOR
BRADLEY G. WIEFERICH, PE

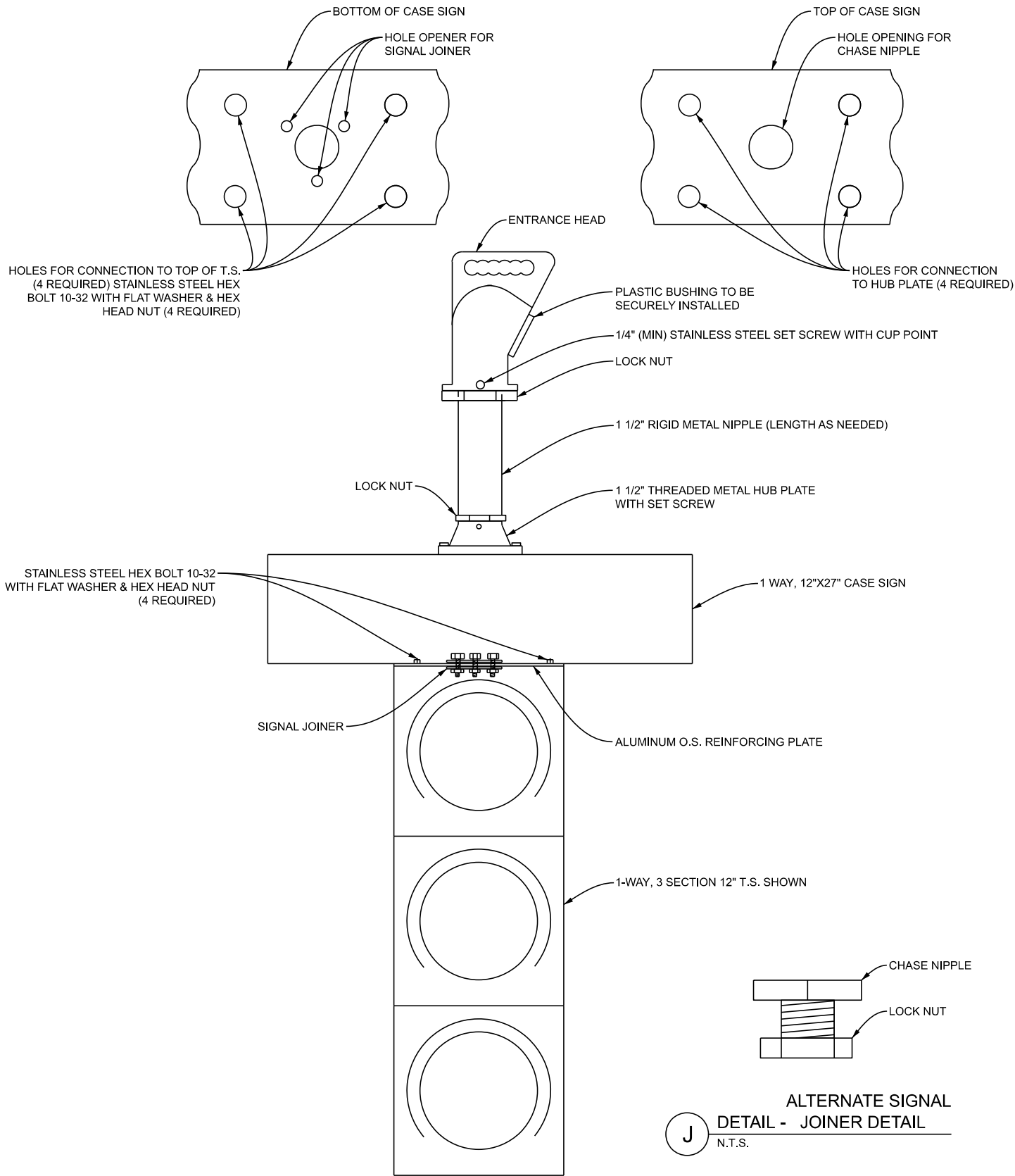
STANDARD PLAN FOR
**BRACKETING FOR SIGNAL
HEAD/CASE SIGN COMBINATIONS**

(SPECIAL DETAIL)
FHWA APPROVAL

10/29/2024
PLAN DATE

SIG-311-A

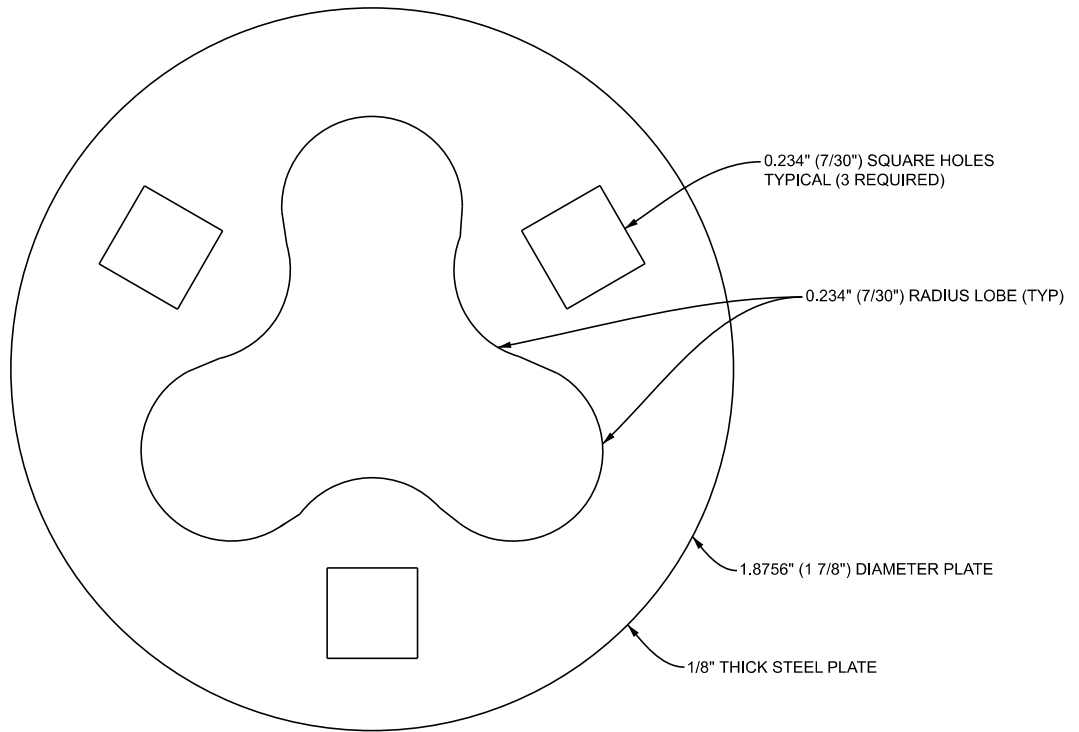
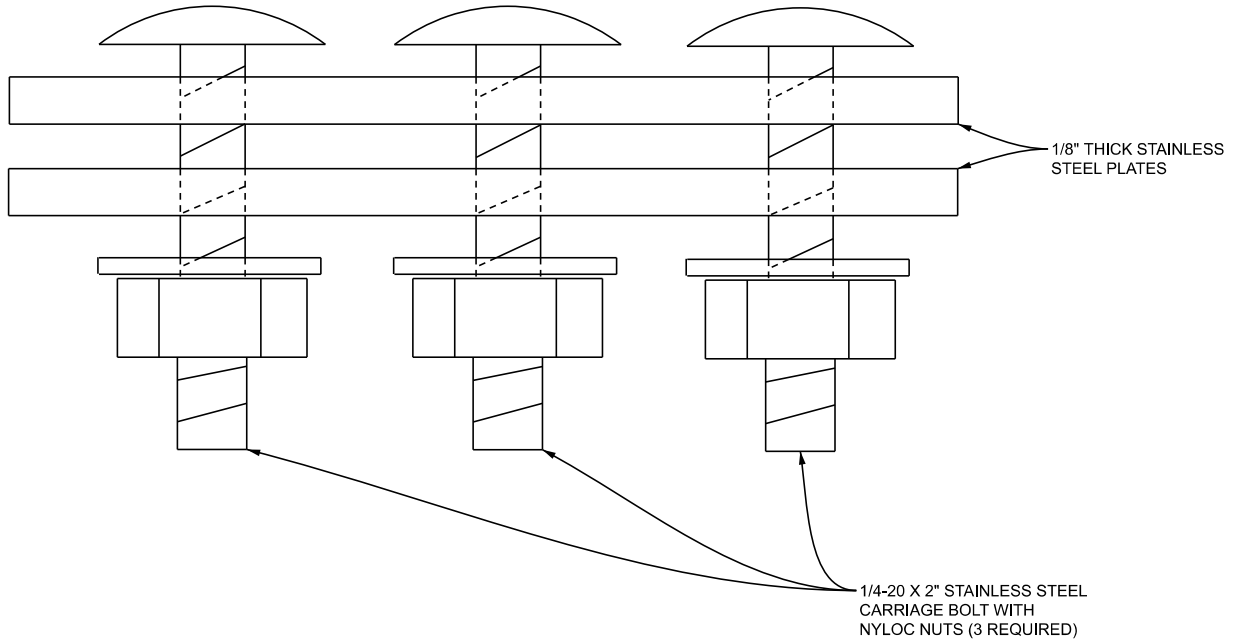
SHEET
3 OF 5



I DETAIL - T.S. MOUNTED BELOW CASE SIGN
N.T.S.

J ALTERNATE SIGNAL
DETAIL - JOINER DETAIL
N.T.S.

	STANDARD PLAN FOR BRACKETING FOR SIGNAL HEAD/CASE SIGN COMBINATIONS			SHEET 4 OF 5
	DEPARTMENT DIRECTOR BRADLEY G. WIEFERICH, PE	(SPECIAL DETAIL) FHWA APPROVAL	10/29/2024 PLAN DATE	



K DETAIL - SIGNAL JOINER
N.T.S.

APPROVED BY: _____
DIRECTOR, BUREAU OF FIELD SERVICES

APPROVED BY: _____
DIRECTOR, BUREAU OF DEVELOPMENT



DEPARTMENT DIRECTOR
BRADLEY C. WIEFERICH, PE

STANDARD PLAN FOR
**BRACKETING FOR SIGNAL
HEAD/CASE SIGN COMBINATIONS**

(SPECIAL DETAIL)
FHWA APPROVAL

10/29/2024
PLAN DATE

SIG-311-A

SHEET
5 OF 5