

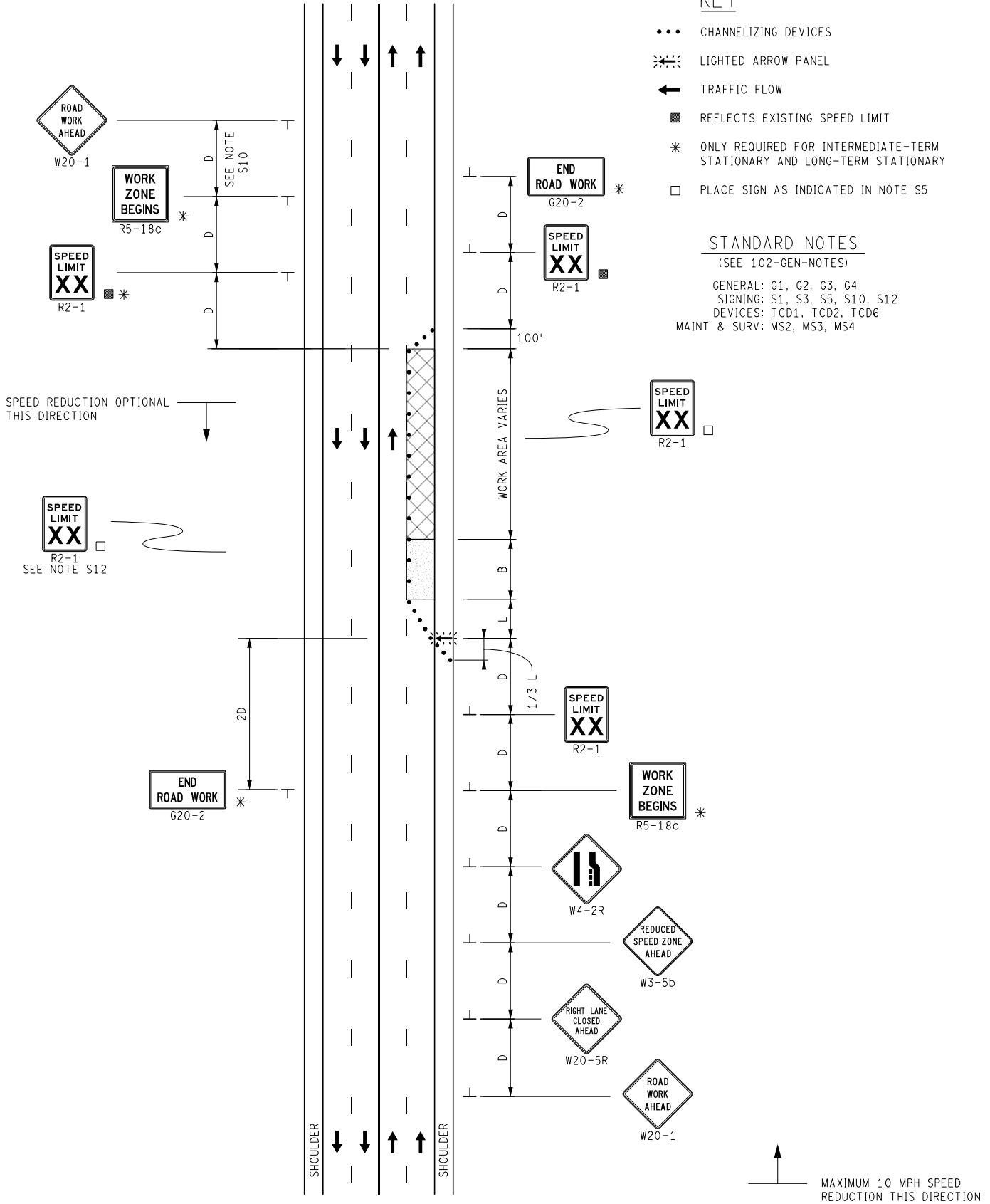
# KEY

- CHANNELIZING DEVICES
- ⚡ LIGHTED ARROW PANEL
- ← TRAFFIC FLOW
- REFLECTS EXISTING SPEED LIMIT
- \* ONLY REQUIRED FOR INTERMEDIATE-TERM STATIONARY AND LONG-TERM STATIONARY
- PLACE SIGN AS INDICATED IN NOTE S5

# STANDARD NOTES

(SEE 102-GEN-NOTES)

GENERAL: G1, G2, G3, G4  
 SIGNING: S1, S3, S5, S10, S12  
 DEVICES: TCD1, TCD2, TCD6  
 MAINT & SURV: MS2, MS3, MS4



NOT TO SCALE

	MAINTENANCE MAINTAINING TRAFFIC TYPICAL	DURATION: LONG-TERM STATIONARY INTERMEDIATE-TERM STATIONARY SHORT-TERM STATIONARY	ONE-LANE CLOSURE ON AN UNDIVIDED MULTI-LANE ROADWAY, WITH A MAXIMUM 10 MPH SPEED REDUCTION	DATE: MAY 2021
				NO: 4123B-M-NFW-1LC-(R)
FILE: 4123B-M-NFW-1LC-(R).dgn				SHEET: 1 OF 1