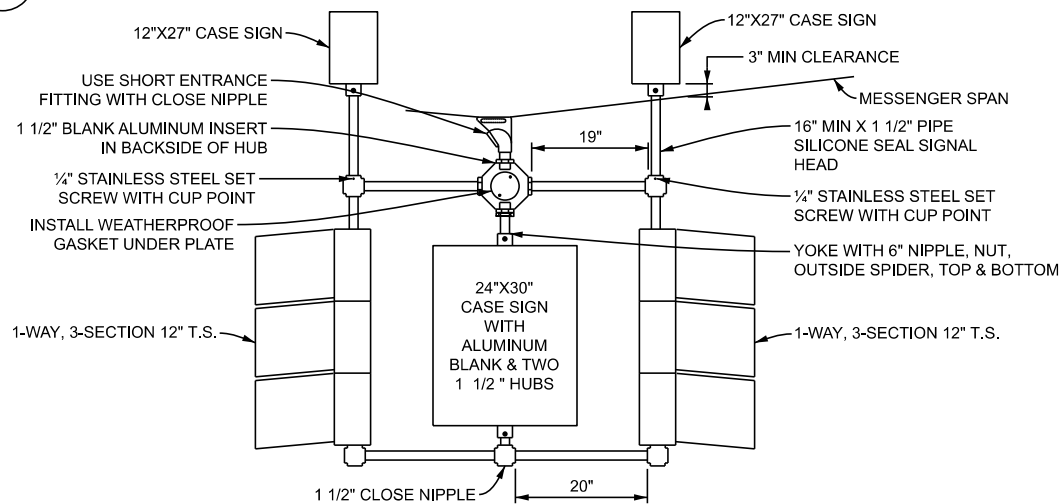
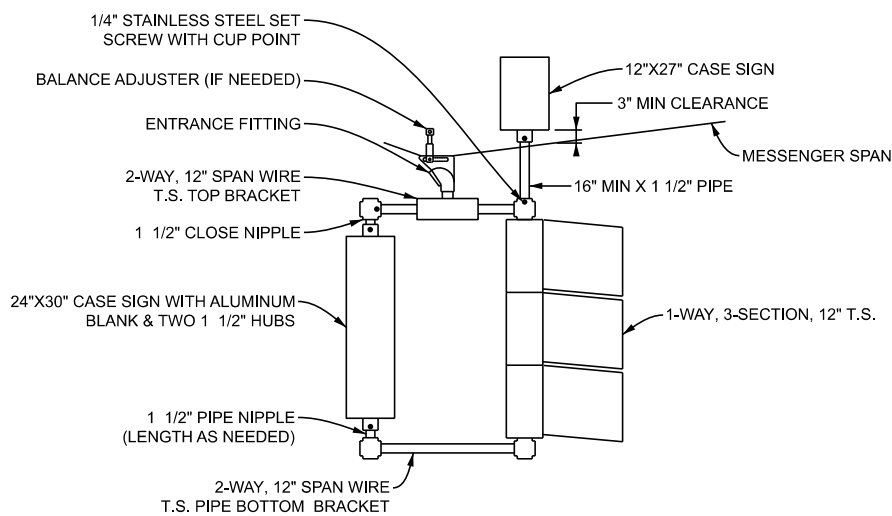


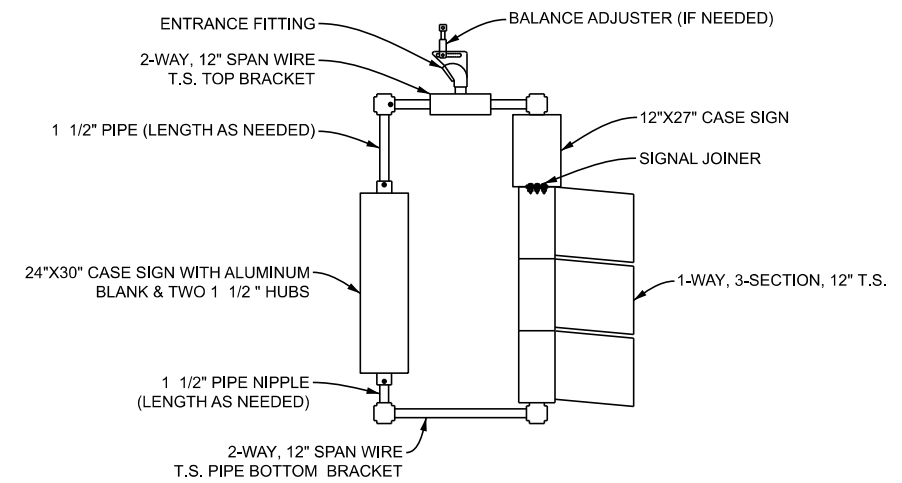
A DETAIL - PREFERRED METHOD 2-WAY T.S./CASE SIGN COMBINATION BELOW HUB
N.T.S.



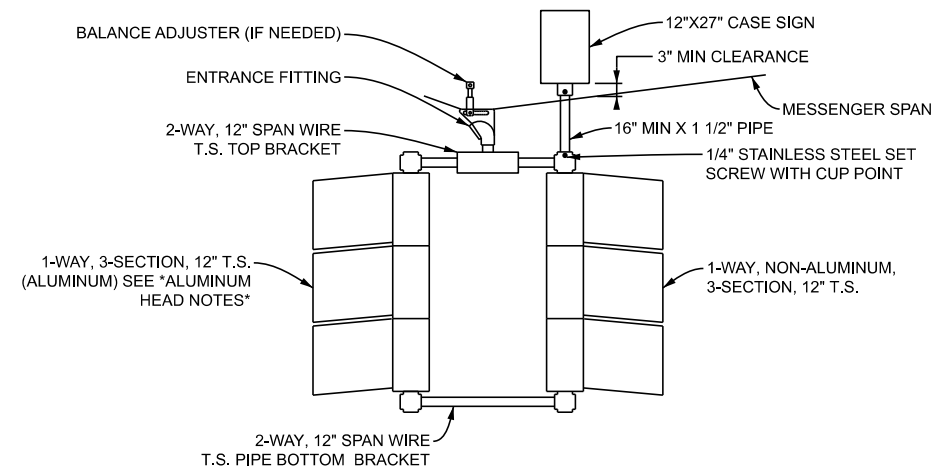
B DETAIL - (ALTERNATE) 2-WAY T.S./CASE SIGN COMBINATION ABOVE HUB
N.T.S.



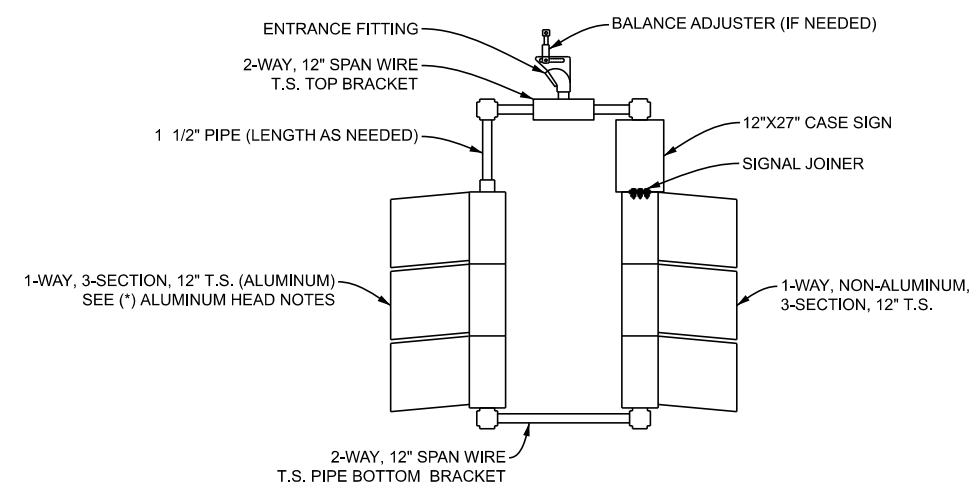
C DETAIL - 1-WAY T.S./CASE SIGN COMBINATION ABOVE HUB
N.T.S.



D DETAIL - 1-WAY T.S./CASE SIGN COMBINATION BELOW HUB
N.T.S.



E DETAIL - 1-WAY (ALUMINUM) & 1-WAY T.S./CASE SIGN COMBINATION ABOVE HUB
N.T.S.



F DETAIL - 1-WAY (ALUMINUM) & 1-WAY T.S./CASE SIGN COMBINATION BELOW HUB
N.T.S.

- (*) ALUMINUM HEAD NOTES:
- 6) TRAFFIC SIGNALS MUST CONFORM TO THE REQUIREMENTS OF THE CURRENT ITE PUBLICATION "VEHICLE TRAFFIC CONTROL SIGNAL HEADS."
 - 7) PROVIDE CAST ALUM. ALLOY HOUSINGS WITH A 2" DIAM. HOLE TOP & BOTTOM TO RECEIVE 1 1/2" SUPPORTING PIPE.
 - 8) PROVIDE A DETACHABLE, SHEET ALUM. VISOR (MIN. 0.057" THICK), FOR EACH SIGNAL INDICATION.
 - 9) PROVIDE TWIST ON SLOTS FOR VISOR MOUNTING THAT ARE EITHER IN THE VISOR OR ON THE TABS FORMED ON THE VISOR.

APPROVED BY: _____
DIRECTOR, BUREAU OF FIELD SERVICES



DEPARTMENT DIRECTOR
BRADLEY C. WIEFERICH, PE

APPROVED BY: _____
DIRECTOR, BUREAU OF DEVELOPMENT

STANDARD PLAN FOR
BRACKETING FOR SIGNAL
HEAD/CASE SIGN COMBINATIONS

(SPECIAL DETAIL)
FHWA APPROVAL

10/29/2024
PLAN DATE

SIG-311-A

SHEET
1 OF 5



DEPARTMENT DIRECTOR
BRADLEY C. WIEFERICH, PE

STANDARD PLAN FOR
BRACKETING FOR SIGNAL
HEAD/CASE SIGN COMBINATIONS

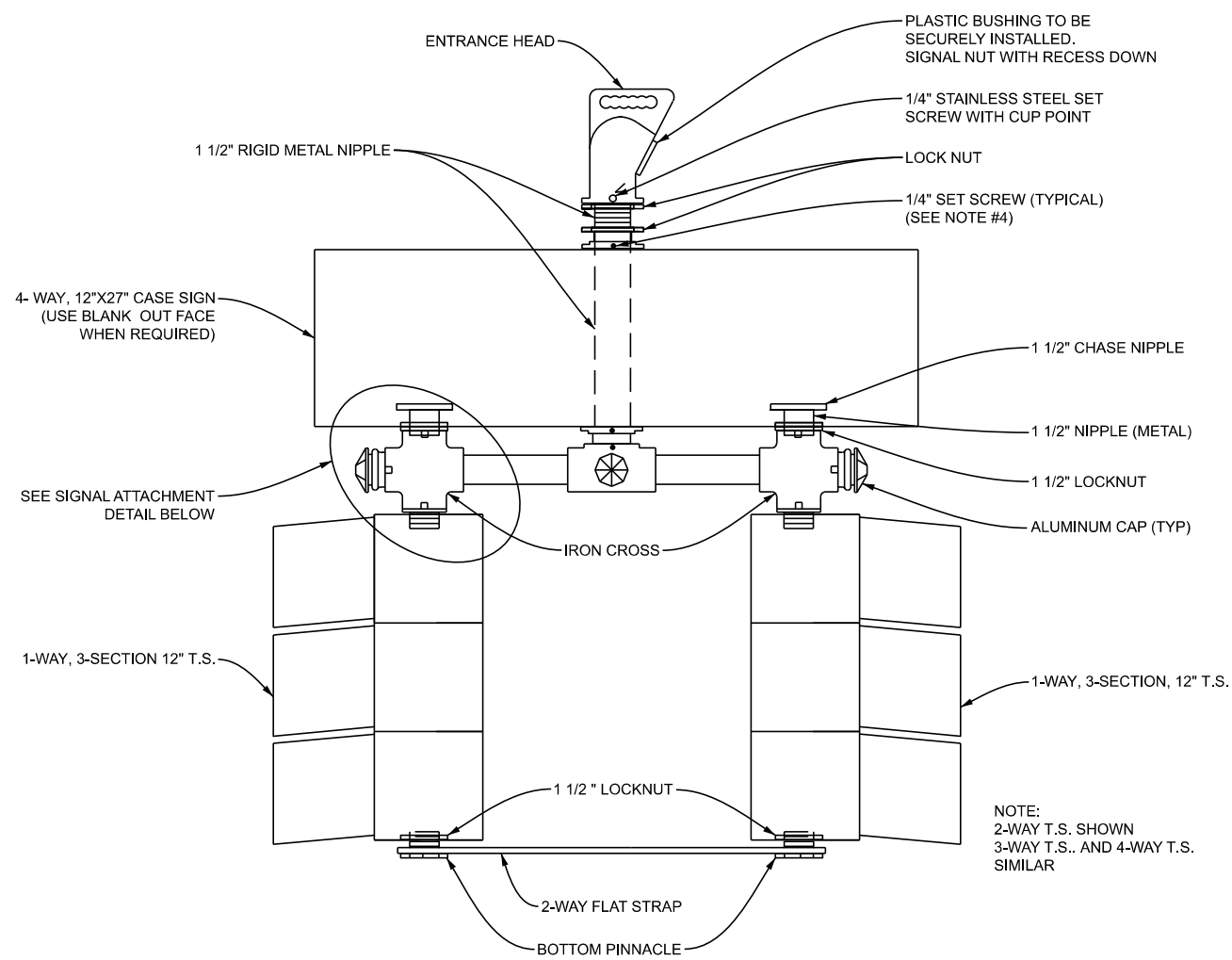
(SPECIAL DETAIL)
FHWA APPROVAL

10/29/2024
PLAN DATE

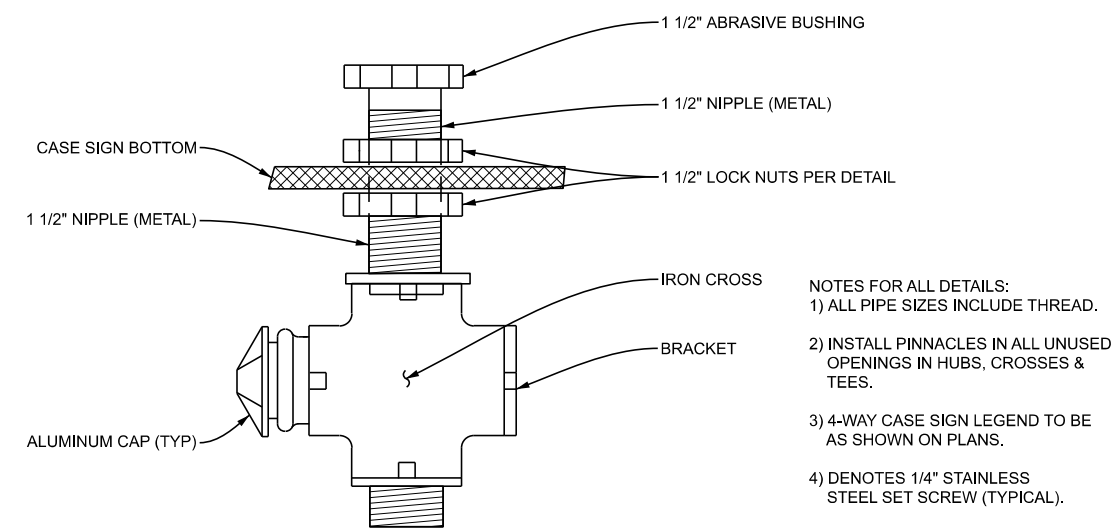
SIG-311-A

SHEET
2 OF 5

SECT

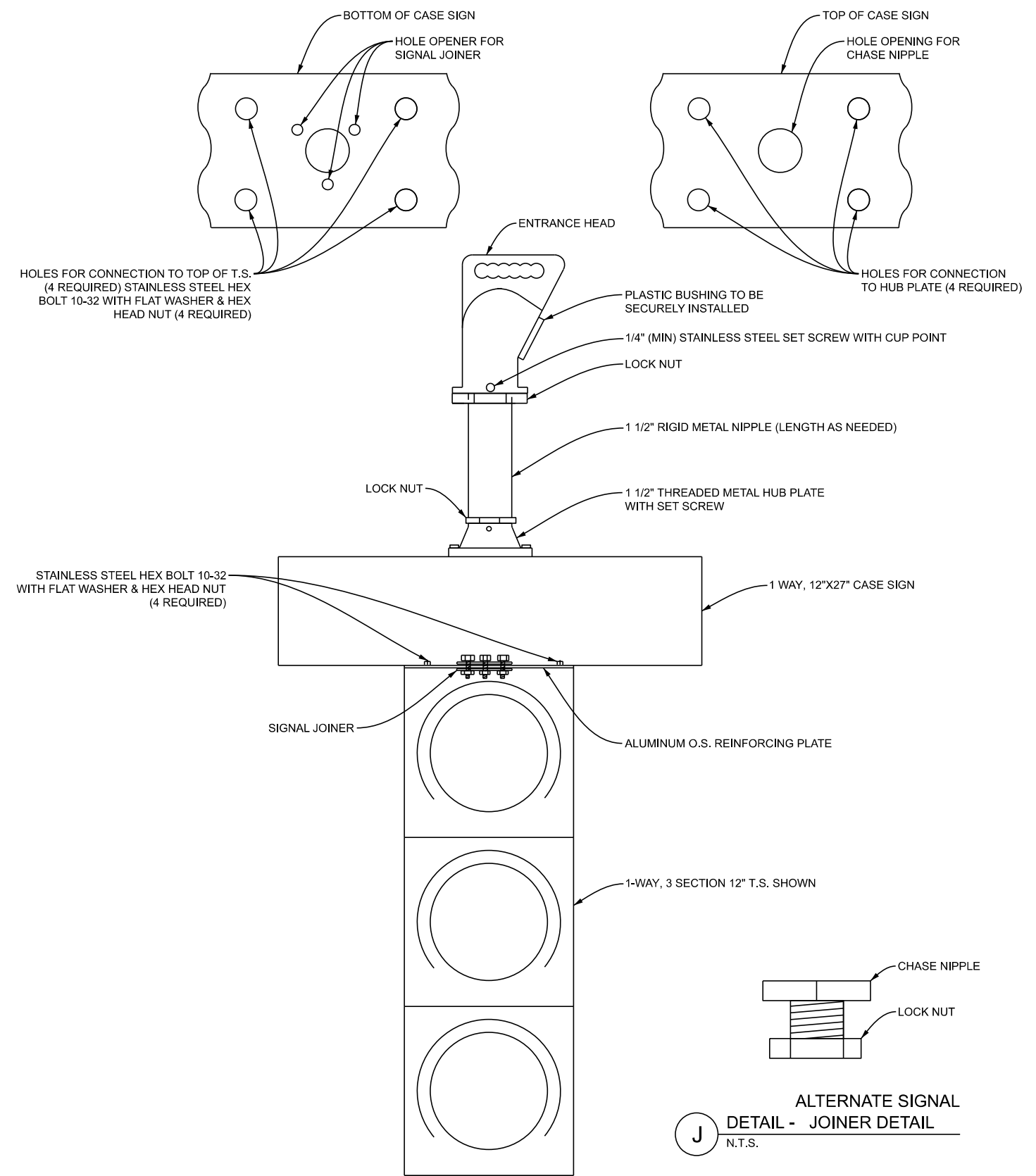


G DETAIL - SPAN WIRE MOUNTED T.S. BRACKET ASSEMBLY WITH 4-WAY CASE SIGN COMBINATION BELOW HUB
N.T.S.

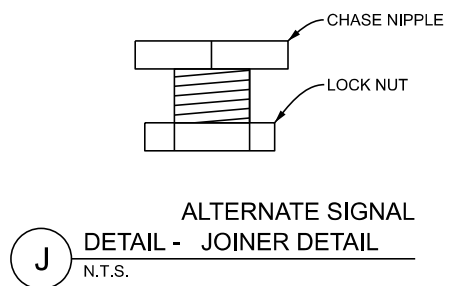


H DETAIL - SIGNAL ATTACHMENT DETAIL
N.T.S.

- NOTES FOR ALL DETAILS:
- 1) ALL PIPE SIZES INCLUDE THREAD.
 - 2) INSTALL PINNACLES IN ALL UNUSED OPENINGS IN HUBS, CROSSES & TEES.
 - 3) 4-WAY CASE SIGN LEGEND TO BE AS SHOWN ON PLANS.
 - 4) DENOTES 1/4" STAINLESS STEEL SET SCREW (TYPICAL).
 - 5) APPLY SILICON SEALANT TO THE FITTINGS ON THE TOP OF CASE SIGNS, AND THE TOP AND BOTTOM CONNECTIONS OF SIGNAL HEADS.



I DETAIL - T.S. MOUNTED BELOW CASE SIGN
N.T.S.



J ALTERNATE SIGNAL
DETAIL - JOINER DETAIL
N.T.S.

APPROVED BY: _____
DIRECTOR, BUREAU OF FIELD SERVICES

APPROVED BY: _____
DIRECTOR, BUREAU OF DEVELOPMENT



STANDARD PLAN FOR
BRACKETING FOR SIGNAL
HEAD/CASE SIGN COMBINATIONS

(SPECIAL DETAIL) 10/29/2024
FHWA APPROVAL PLAN DATE

SIG-311-A

SHEET 3 OF 5

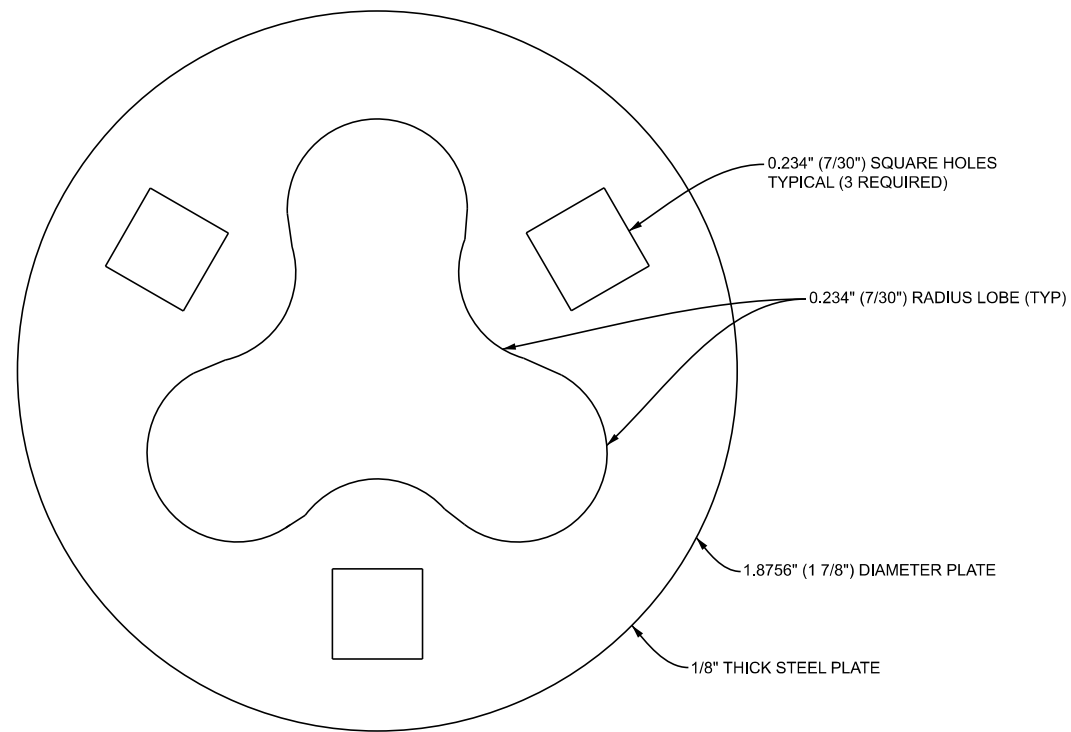
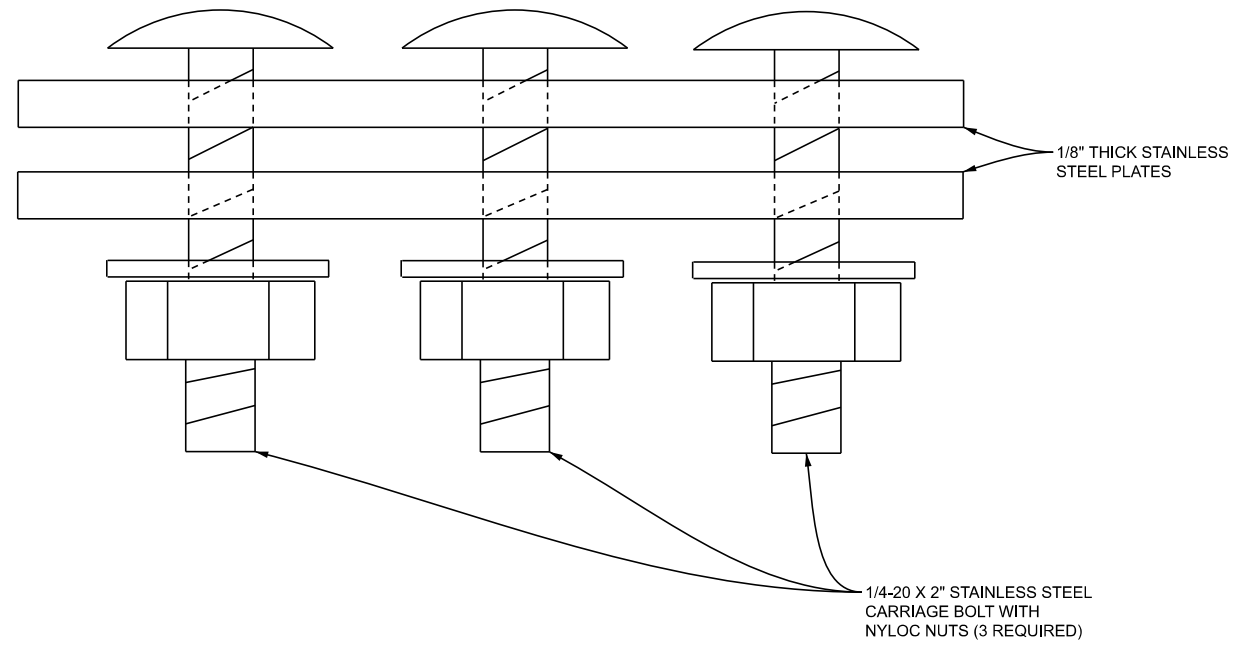


STANDARD PLAN FOR
BRACKETING FOR SIGNAL
HEAD/CASE SIGN COMBINATIONS

(SPECIAL DETAIL) 10/29/2024
FHWA APPROVAL PLAN DATE

SIG-311-A

SHEET 4 OF 5
SECT



K DETAIL - SIGNAL JOINER
N.T.S.

APPROVED BY: _____
DIRECTOR, BUREAU OF FIELD SERVICES



DEPARTMENT DIRECTOR
BRADLEY G. WIEFERICH, PE

APPROVED BY: _____
DIRECTOR, BUREAU OF DEVELOPMENT

(SPECIAL DETAIL)
FHWA APPROVAL

10/29/2024
PLAN DATE

STANDARD PLAN FOR
BRACKETING FOR SIGNAL
HEAD/CASE SIGN COMBINATIONS

SIG-311-A

SHEET
5 OF 5

SECT