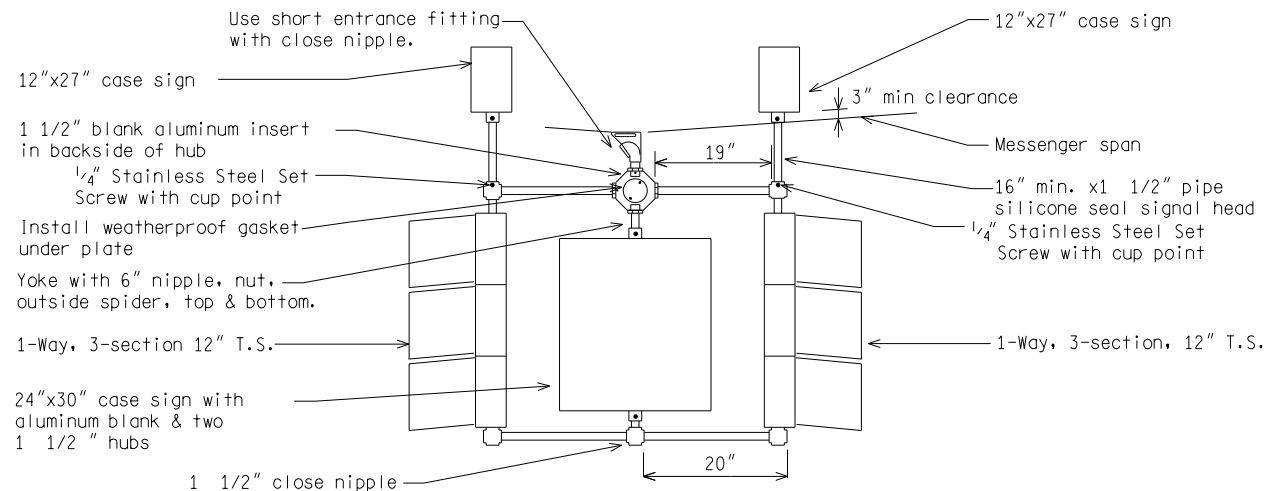
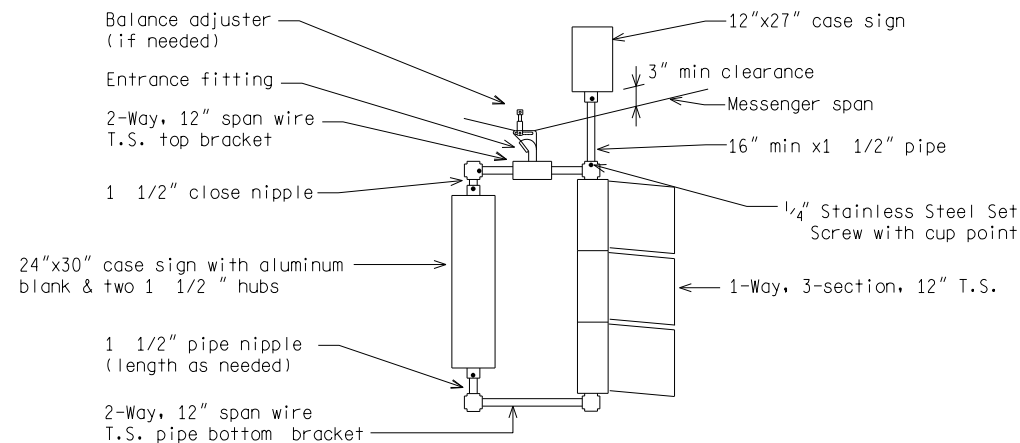


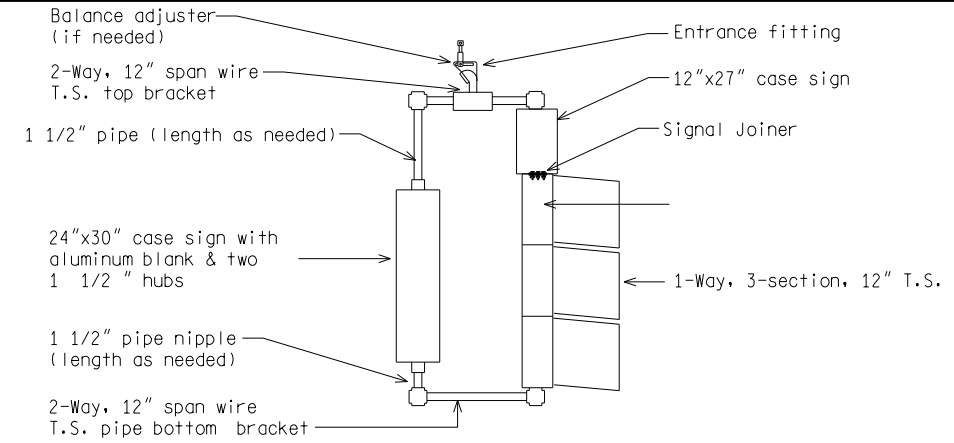
PREFERRED METHOD 2-WAY T.S./CASE SIGN COMBINATION BELOW HUB



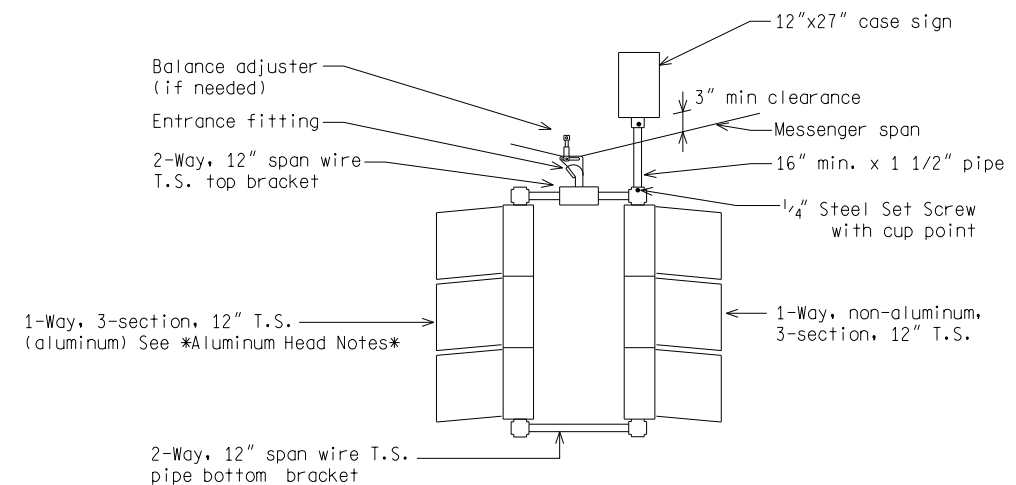
(ALTERNATE) 2-WAY T.S./CASE SIGN COMBINATION ABOVE HUB



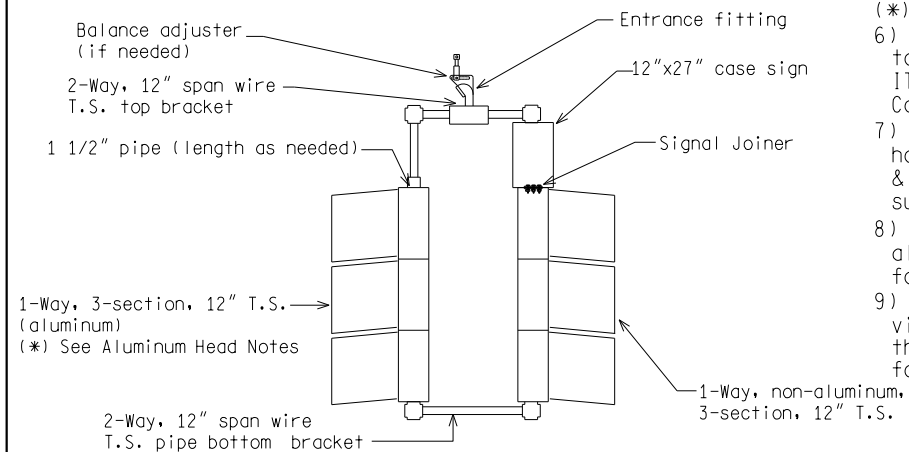
1-WAY T.S./CASE SIGN COMBINATION ABOVE HUB



1-WAY T.S./CASE SIGN COMBINATION BELOW HUB



1-WAY (ALUMINUM) & 1-WAY T.S./CASE SIGN COMBINATION ABOVE HUB



1-WAY (ALUMINUM) & 1-WAY T.S./CASE SIGN COMBINATION BELOW HUB

- (* Aluminum Head Notes:
- 6) Traffic signals must conform to the requirements of the current ITE publication "Vehicle Traffic Control Signal Heads."
 - 7) Provide cast alum. alloy housings with a 2" diam. hole top & bottom to receive 1 1/2" supporting pipe.
 - 8) Provide a detachable, sheet alum. visor (min. 0.057" thick), for each signal indication.
 - 9) Provide twist on slots for visor mounting that are either in the visor or on the tabs formed on the visor.

NOT TO SCALE

File: RefDoc/TR/Signals/Web/Sp Det/Fin/SIG311A.dgn Rev. 02/16/17



ENGINEER OF DELIVERY

ENGINEER OF DEVELOPMENT

(SPECIAL DETAIL)
FHWA APPROVAL DATE

MICHIGAN DEPARTMENT OF TRANSPORTATION
BUREAU OF HIGHWAYS DELIVERY STANDARD PLAN FOR
BRACKETING FOR SIGNAL
HEAD/CASE SIGN COMBINATIONS

SIG-311-A

SHEET
1 of 5

NOT TO SCALE

MICHIGAN DEPARTMENT OF TRANSPORTATION
BUREAU OF HIGHWAYS DELIVERY STANDARD PLAN

(SPECIAL DETAIL)
FHWA APPROVAL DATE

File: RefDoc/TR/Signals/Web/Sp Det/Fin/SIG311A.dgn Rev. 02/16/17

PLAN DATE

SIG-311-A

SHEET
2 of 5

AS-LET PLAN REVISIONS

NO.	DATE	AUTH	DESCRIPTION	NO.	DATE	AUTH	DESCRIPTION



FILE:

DATE:

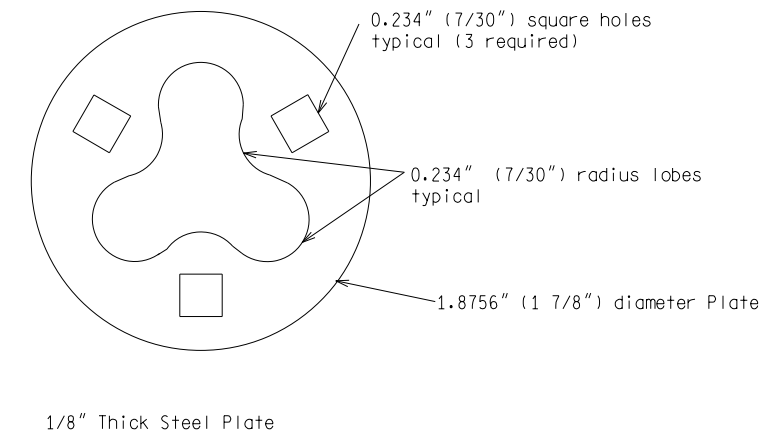
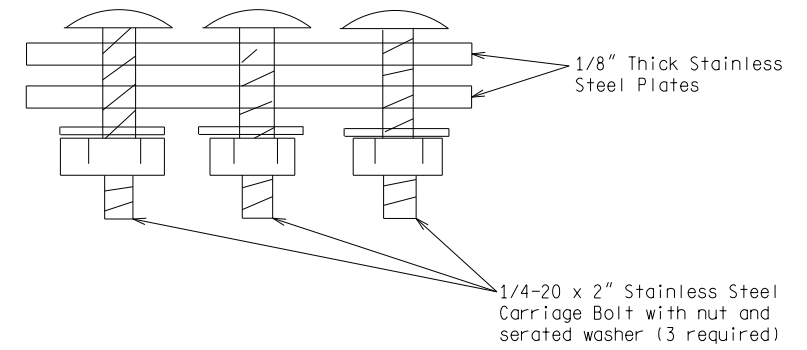
DESIGN UNIT:

TSC:

CS:

JN:

DRAWING SHEET



SIGNAL JOINER

NOT TO SCALE

MICHIGAN DEPARTMENT OF TRANSPORTATION BUREAU OF HIGHWAYS DELIVERY STANDARD PLAN	(SPECIAL DETAIL) FHWA APPROVAL DATE		SIG-311-A	SHEET 5 of 5
File: RefDoc/TR/Signals/Web/Sp Det/F in/SIG311A.dgn	Rev. 02/16/17	PLAN DATE		

AS-LET PLAN REVISIONS

NO.	DATE	AUTH	DESCRIPTION	NO.	DATE	AUTH	DESCRIPTION



DATE:	CS:	DRAWING	SHEET
DESIGN UNIT:	JN:		
TSC:			
FILE:			