

NOTE

THIS TYPICAL IS ONLY TO BE USED WITHIN AN EXISTING WORK ZONE. INCLUDE ADDITIONAL LEAD IN WORK ZONE SIGNS WHEN USING THIS TYPICAL.

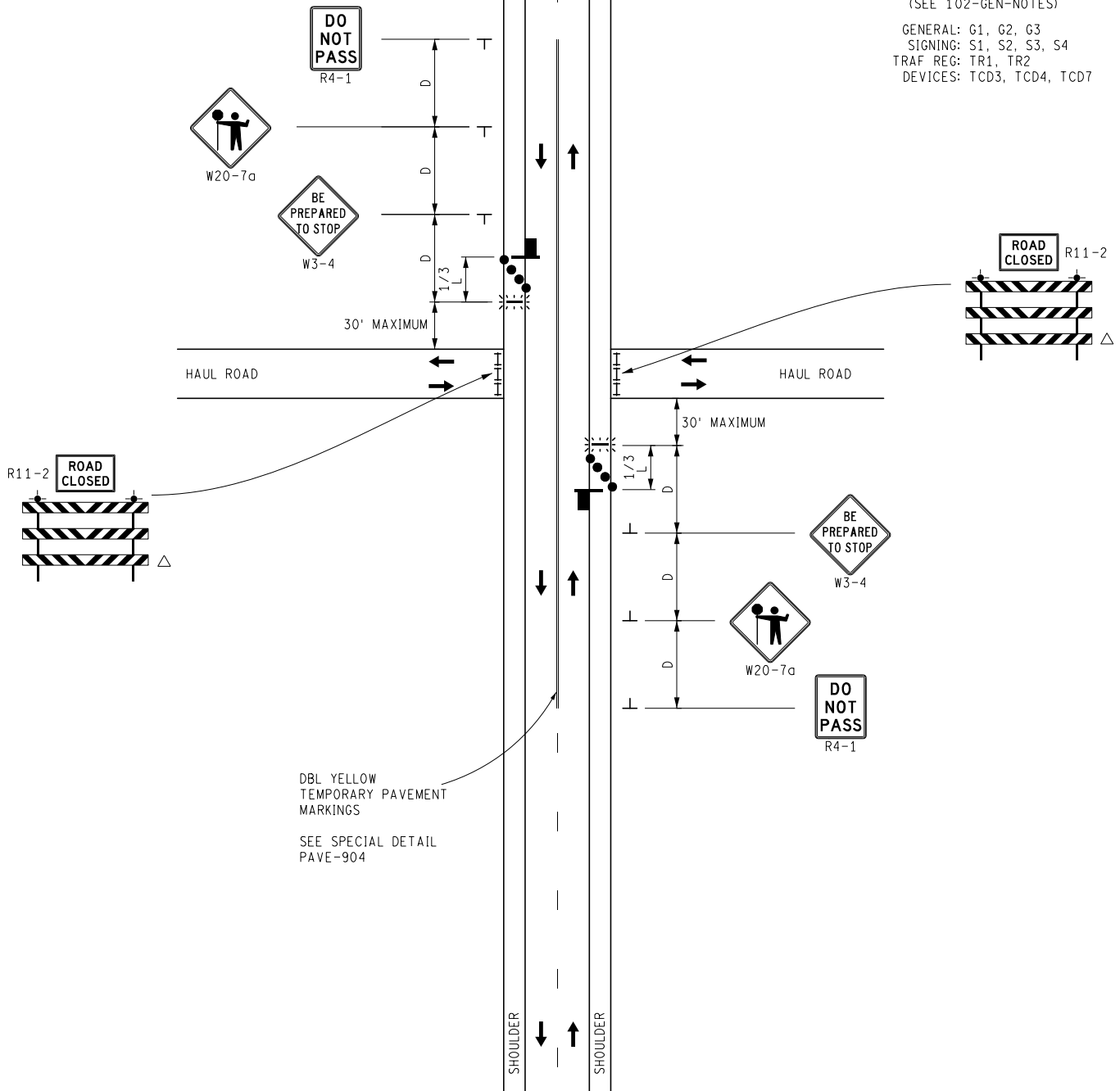
KEY

- CHANNELIZING DEVICES
- ▬ TRAFFIC REGULATOR
- ⚡ LIGHTED ARROW PANEL (CAUTION MODE)
- ← TRAFFIC FLOW
- △ PLACE BARRICADES AS INDICATED IN NOTE TCD7

STANDARD NOTES

(SEE 102-GEN-NOTES)

GENERAL: G1, G2, G3
 SIGNING: S1, S2, S3, S4
 TRAF REG: TR1, TR2
 DEVICES: TCD3, TCD4, TCD7



NOT TO SCALE

MAINTAINING TRAFFIC TYPICAL

NO:

113-TR-HAUL

HAUL ROAD CROSSING
 UTILIZING TRAFFIC REGULATORS
 ON A 2-LANE, UNDIVIDED ROADWAY
 WITHIN AN EXISTING WORK ZONE

DATE:
 MAY 2021

SHEET:

1 OF 1