

KEY

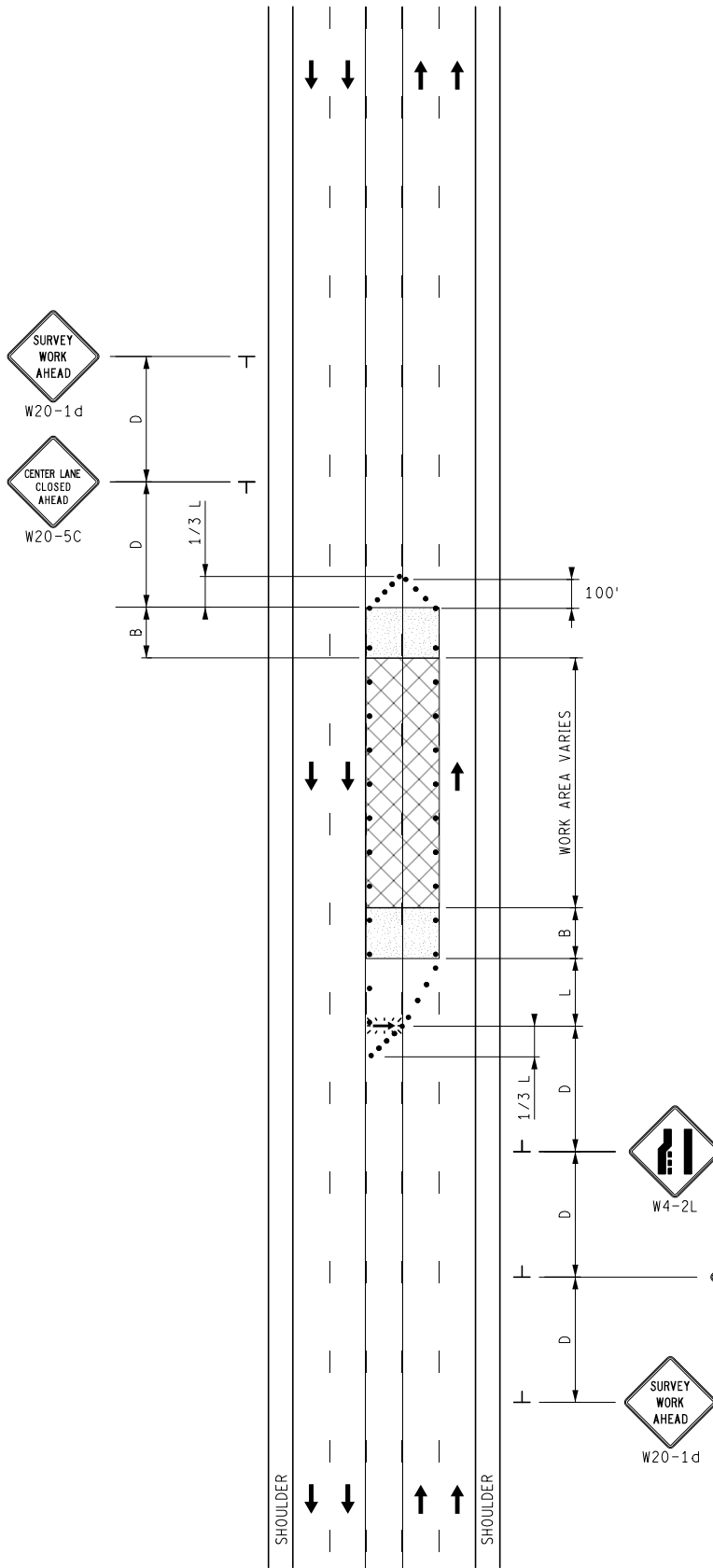
- CHANNELIZING DEVICES
- ⊘ LIGHTED ARROW PANEL
- ← TRAFFIC FLOW

NOTES

1. FOR SHORT DURATION OPERATIONS, AT LEAST ONE ADVANCE WARNING SIGN (W21-6 OR W20-1) SHALL BE USED.

STANDARD NOTES
(SEE 102-GEN-NOTES)

- GENERAL: G1, G2, G3, G4
- SIGNING: S1
- DEVICES: TCD1, TCD2, TCD6
- MAINT & SURV: MS2, MS3, MS4, MS6



NOT TO SCALE

	SURVEYING MAINTAINING TRAFFIC TYPICAL	DURATION: SHORT-TERM STATIONARY SHORT DURATION	CENTER AND LEFT LANE CLOSURE OF AN UNDIVIDED MULTI-LANE ROADWAY	DATE: MAY 2021
				NO: 5133-S-CLT-1LC-(L)
FILE: 5133-S-CLT-1LC-(L).dgn				SHEET: 1 OF 1