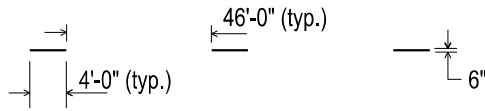
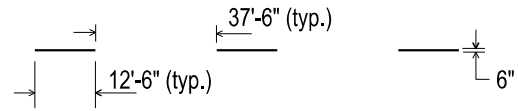


# TYPES OF TEMPORARY LONGITUDINAL LINES

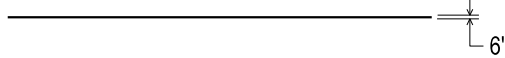
BROKEN WHITE LANE LINE (1)



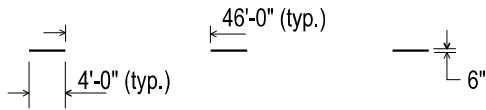
BROKEN WHITE LANE LINE (2)



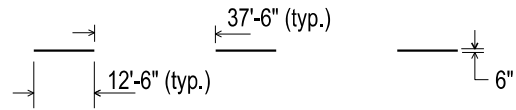
SOLID WHITE LANE LINE OR LANE SHIFT



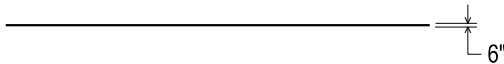
BROKEN YELLOW CENTERLINE (1)



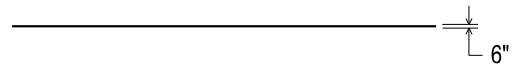
BROKEN YELLOW CENTERLINE (2)



SOLID WHITE EDGE LINE



SOLID YELLOW EDGE LINE

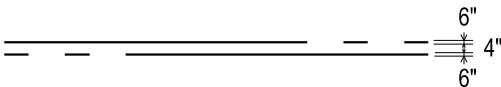


SOLID WHITE GORE MARKING

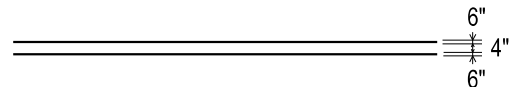


## LINE PATTERNS

TWO - LANE PASSING PROHIBITED (YELLOW)



DOUBLE SOLID YELLOW (OR WHITE)



**NOTE:**

1. SEE PROJECT DOCUMENTS FOR CORRECT BROKEN LINE PATTERN.

APPROVED BY: \_\_\_\_\_  
DIRECTOR, BUREAU OF FIELD SERVICES

APPROVED BY: \_\_\_\_\_  
DIRECTOR, BUREAU OF DEVELOPMENT



DEPARTMENT DIRECTOR  
BRADLEY C. WIEFERICH, PE

STANDARD PLAN FOR  
TEMPORARY LONGITUDINAL  
LINE TYPES & PLACEMENT

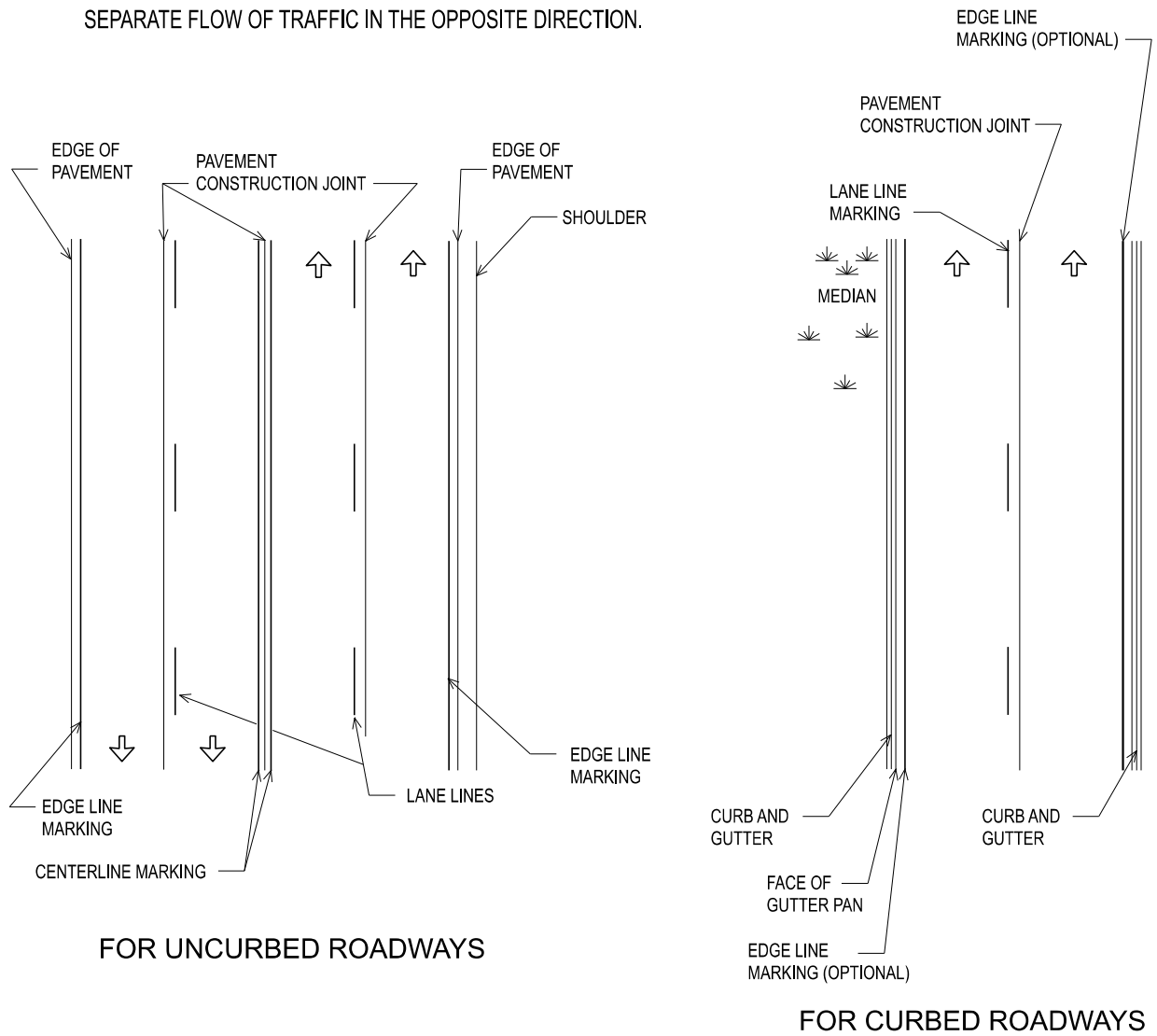
11/22/2023  
FHWA APPROVAL

09/13/2023  
PLAN DATE

PAVE-904-B

SHEET  
1 OF 2

**BASIC COLOR RULE:** WHITE LINES SEPARATE FLOW OF TRAFFIC IN THE SAME DIRECTION, YELLOW LINES SEPARATE FLOW OF TRAFFIC IN THE OPPOSITE DIRECTION.



## PLACEMENT OF LINES

**NOTES:**

1. TEMPORARY MARKING LOCATIONS SHALL CONFORM WITH SECTION 812 OF THE STANDARD SPECIFICATIONS FOR CONSTRUCTION.
2. SEE PAVE-905 FOR LOCATIONS OF PERMANENT PAVEMENT MARKING LINES.
3. REMOVE PAVEMENT MARKINGS THAT CONFLICT WITH PROPOSED TEMPORARY TRAFFIC MARKINGS BEFORE MAKING ANY CHANGES IN TRAFFIC PATTERN. DO NOT USE PAINT OR BITUMINOUS BOND COAT TO COVER EXISTING AND INAPPROPRIATE PAVEMENT MARKINGS. TAPE MAY ONLY BE USED WITH APPROVAL OF THE ENGINEER.



DEPARTMENT DIRECTOR  
BRADLEY C. WIEFERICH, PE

STANDARD PLAN FOR  
TEMPORARY LONGITUDINAL  
LINE TYPES & PLACEMENT

11/22/2023  
FHWA APPROVAL

09/13/2023  
PLAN DATE

PAVE-904-B

SHEET  
2 OF 2