

KEY

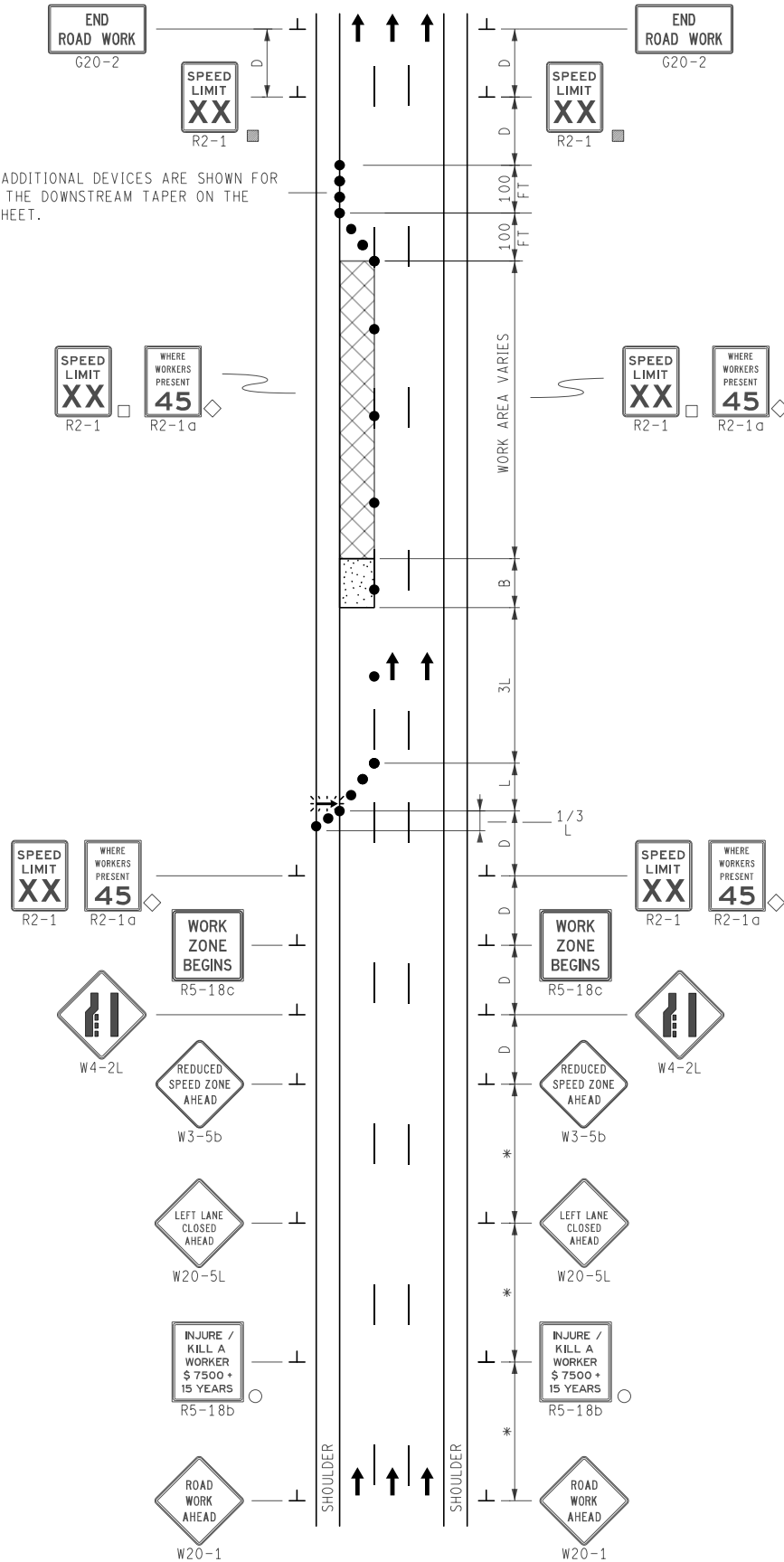
- CHANNELIZING DEVICES
- ⚡ LIGHTED ARROW PANEL
- ← TRAFFIC FLOW
- REFLECTS EXISTING SPEED LIMIT
- PLACE SIGN AS INDICATED IN NOTE S5
- PLACE SIGN AS INDICATED IN NOTE S2
- ◇ R2-1a OPTIONAL
- * PLACE SIGNS AT A SPACING OF D ON DIVIDED ROADWAYS AND 2D ON FREEWAYS

STANDARD NOTES

(SEE 102-GEN-NOTES)

GENERAL: G1, G2, G3, G4
 SIGNING: S1, S2, S3, S5, S8
 DEVICES: TCD1, TCD2, TCD6

THESE ADDITIONAL DEVICES ARE SHOWN FOR USE IN THE DOWNSTREAM TAPER ON THE NEXT SHEET.



END ROAD WORK
G20-2

SPEED LIMIT
XX
R2-1

END ROAD WORK
G20-2

SPEED LIMIT
XX
R2-1

SPEED LIMIT
XX
R2-1

WHERE WORKERS PRESENT
45
R2-1a

SPEED LIMIT
XX
R2-1

WHERE WORKERS PRESENT
45
R2-1a

WORK ZONE BEGINS
R5-18c

WORK ZONE BEGINS
R5-18c

SPEED LIMIT
XX
R2-1

WHERE WORKERS PRESENT
45
R2-1a

W4-2L

REDUCED SPEED ZONE AHEAD
W3-5b

LEFT TWO LANES CLOSED AHEAD
W20-5aL2

INJURE / KILL A WORKER
\$ 7500 + 15 YEARS
R5-18b

ROAD WORK AHEAD
W20-1

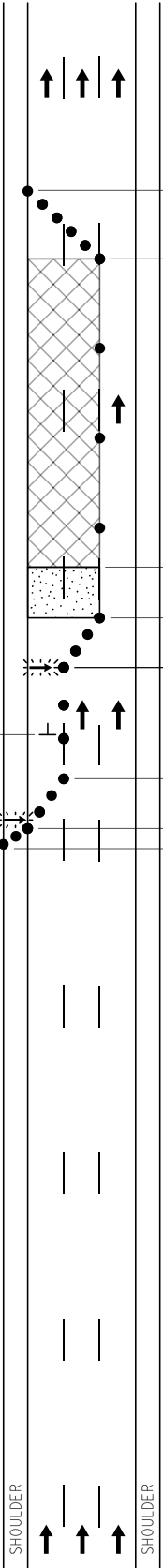
W4-2L

REDUCED SPEED ZONE AHEAD
W3-5b

LEFT TWO LANES CLOSED AHEAD
W20-5aL2

INJURE / KILL A WORKER
\$ 7500 + 15 YEARS
R5-18b

ROAD WORK AHEAD
W20-1



NOT TO SCALE

MAINTAINING TRAFFIC TYPICAL

NO:
202-FW-(1-2)LC-(L)

1-LANE TO 2-LANE CLOSURE
ON A 3-LANE FREEWAY
OR DIVIDED ROADWAY

DATE:
DECEMBER 2021
SHEET: