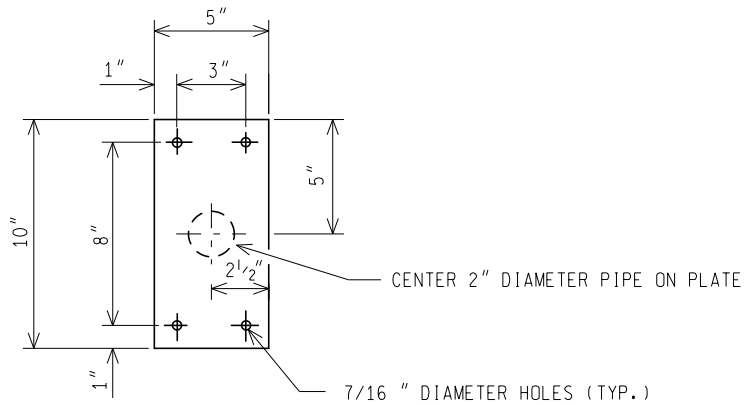


CONCRETE MEDIAN BARRIER CONNECTION



BASE PLATE DETAILS



PREPARED BY
DESIGN DIVISION

DRAWN BY: BMS

CHECKED BY: AJU

DEPARTMENT DIRECTOR
Kirk T. Steudle

APPROVED BY: *Randy V. Potts*
DIRECTOR, BUREAU OF FIELD SERVICES

APPROVED BY: *Paul A. Van Pelt*
DIRECTOR, BUREAU OF HIGHWAY DEVELOPMENT

MICHIGAN DEPARTMENT OF TRANSPORTATION
BUREAU OF HIGHWAY DEVELOPMENT STANDARD PLAN FOR

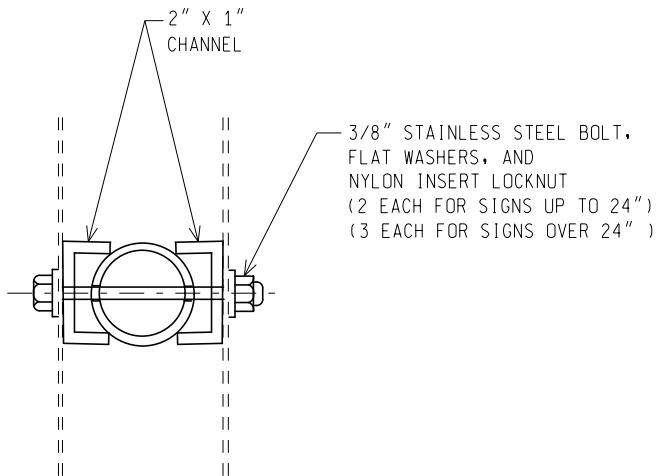
CONCRETE MEDIAN BARRIER CONNECTION

09/10/2013
F.H.W.A. APPROVAL

08/20/2013
PLAN DATE

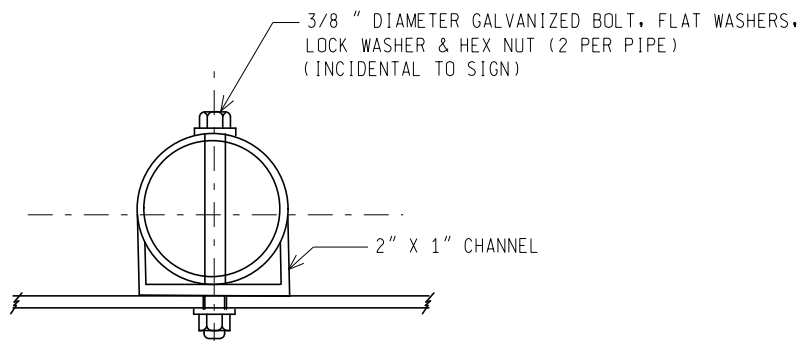
SIGN-720-B

SHEET
1 OF 2



TYPICAL SIGN CONNECTION DETAIL

(BACK TO BACK)



TYPICAL SIGN CONNECTION DETAIL

NOTES:

1. ENTIRE SECTION (PIPE & PLATE) TO BE HOT DIP GALVANIZED PER MDOT STANDARDS SPECIFICATIONS FOR CONSTRUCTION AFTER FABRICATION.
2. ALL CHANNELS, BOLTS, NUTS AND WASHERS TO BE GALVANIZED.
3. STEEL PIPE, PLATE AND CHANNEL MATERIAL PER MDOT STANDARD SPECIFICATIONS FOR CONSTRUCTION.
4. SUPPORT SUITABLE FOR A SINGLE SIGN CONNECTION WITH A MAXIMUM OF 4 SQ. FT. & BACK TO BACK SIGN CONNECTION WITH A MAXIMUM OF 8 SQ. FT.
5. USE THE CONCRETE MEDIAN BARRIER CONNECTION (SQUARE TUBE SUPPORT) WHEN INSTALLING SIGNS ON CONCRETE BARRIERS HAVING A TOP WIDTH OF 6 INCHES OR WIDER.
6. GLARE SCREEN AND BARRIER CONNECTIONS MUST BE INSTALLED TO ENSURE THAT EITHER A PIPE SUPPORT OR A SQUARE TUBE IS PLUMB ON THE GLARE SCREEN OR CONCRETE BARRIER WALL.

NOT TO SCALE

MICHIGAN DEPARTMENT OF TRANSPORTATION
BUREAU OF HIGHWAY DEVELOPMENT STANDARD PLAN

09/10/2013
F.H.W.A. APPROVAL

08/20/2013
PLAN DATE

SIGN-720-B

SHEET
2 OF 2