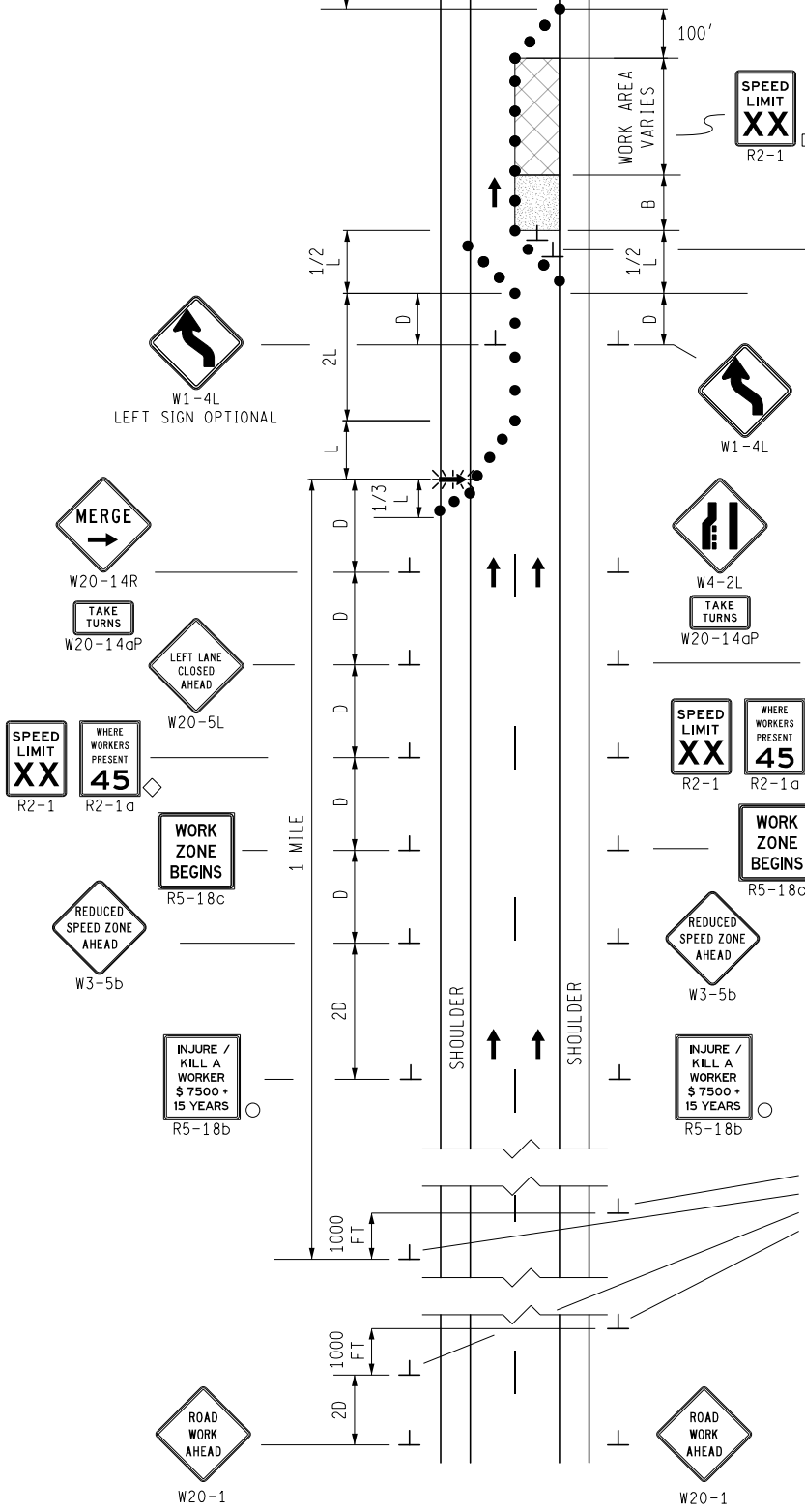


KEY

- CHANNELIZING DEVICES
- ⚡ LIGHTED ARROW PANEL
- ← TRAFFIC FLOW
- REFLECTS EXISTING SPEED LIMIT
- PLACE SIGN AS INDICATED IN NOTE S5
- ◇ R2-1a OPTIONAL
- PLACE AS INDICATED IN NOTE S2

STANDARD NOTES
(SEE 102-GEN-NOTES)

GENERAL: G1, G2, G3, G4
SIGNING: S1, S2, S3, S5, S6, S8, S11
DEVICES: TCD1, TCD2, TCD6, TCD10



PLACE PCMS EVERY ONE MILE FOR THE ESTIMATED MAXIMUM QUEUE DISTANCE AS DETERMINED BY THE ENGINEER.

USE ALL LANES

PORTABLE CHANGEABLE MESSAGE SIGN (PCMS) SCREEN 1

DURING BACKUPS

PORTABLE CHANGEABLE MESSAGE SIGN (PCMS) SCREEN 2