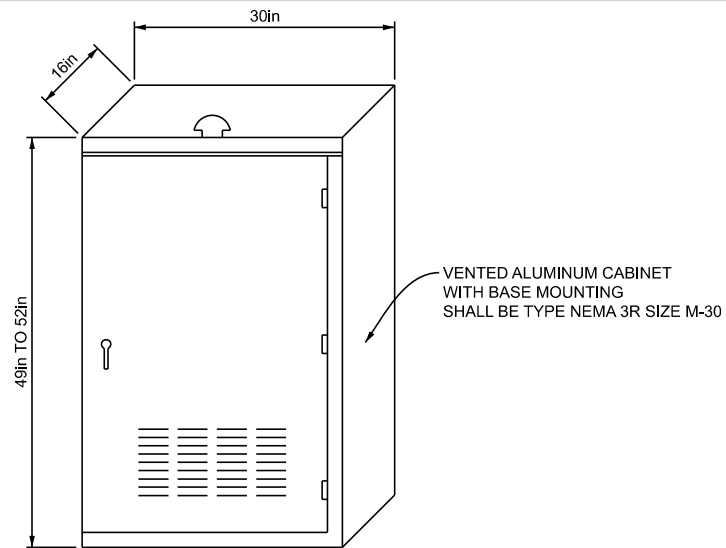
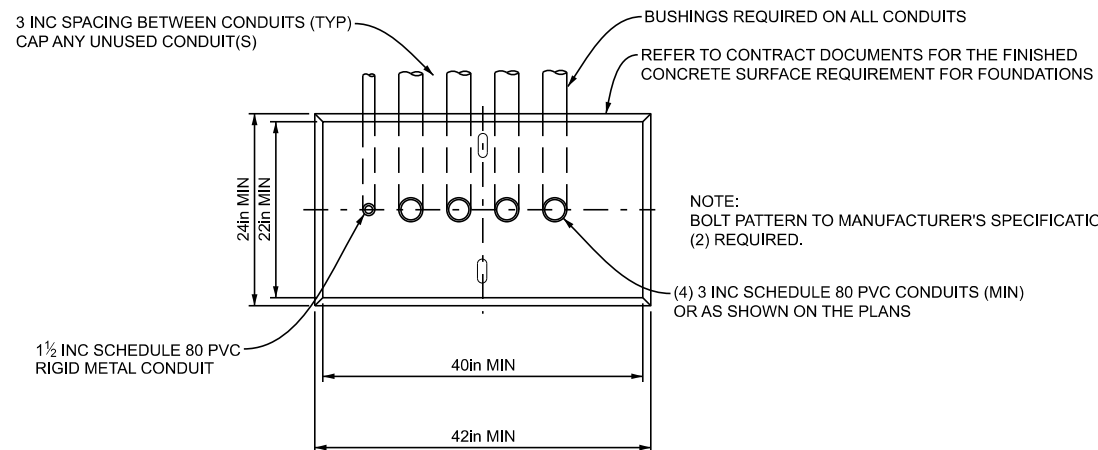


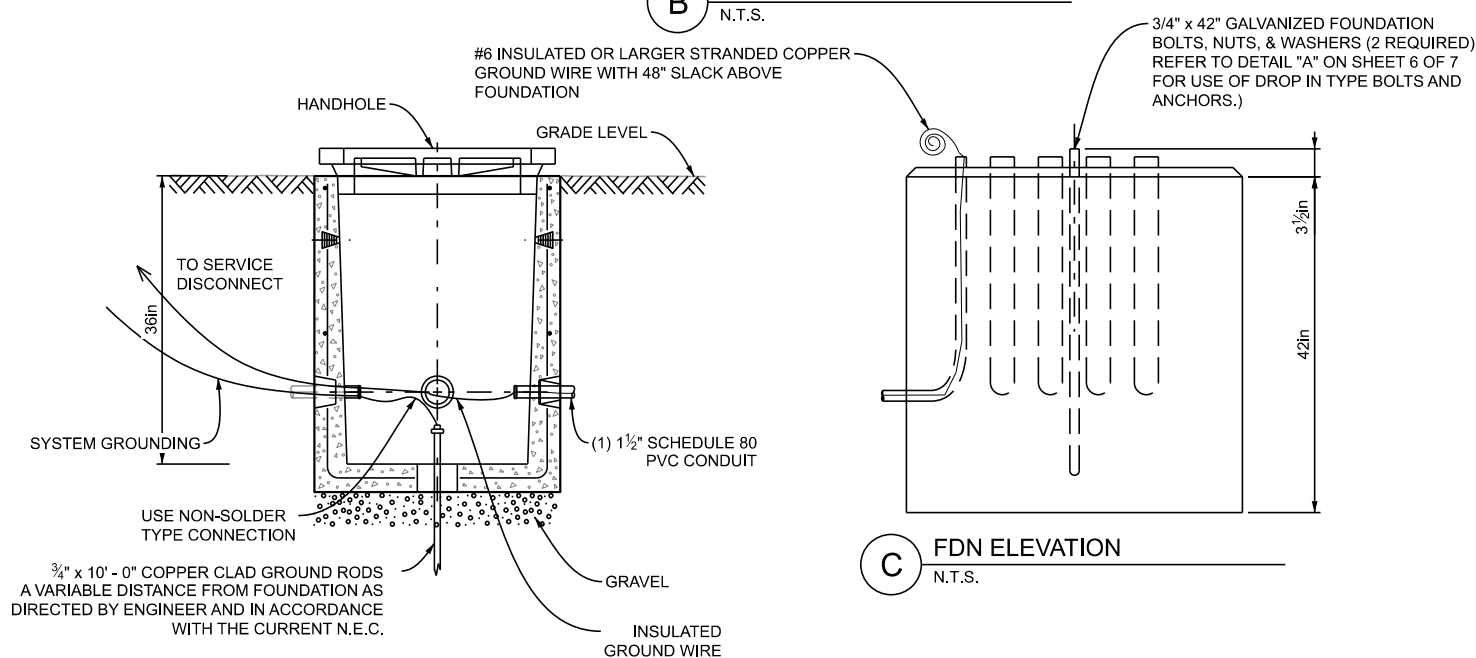
- NOTE:
- 1) GROUNDING SYSTEM SHALL MEASURE 10 OHM OR LESS TO GROUND, WITH A 10' (MIN) SPACING BETWEEN GROUND RODS.
 - 2) ALL INSULATED JACKETS ARE TO REMAIN ON CABLE ENTERING CONTROLLER.
 - 3) KEEP 1-3" CONDUIT ON LEFT SIDE OPEN FOR I.T.S.



A BASE MTD TRAFFIC SIGNAL CONTROLLER CABINET
N.T.S.

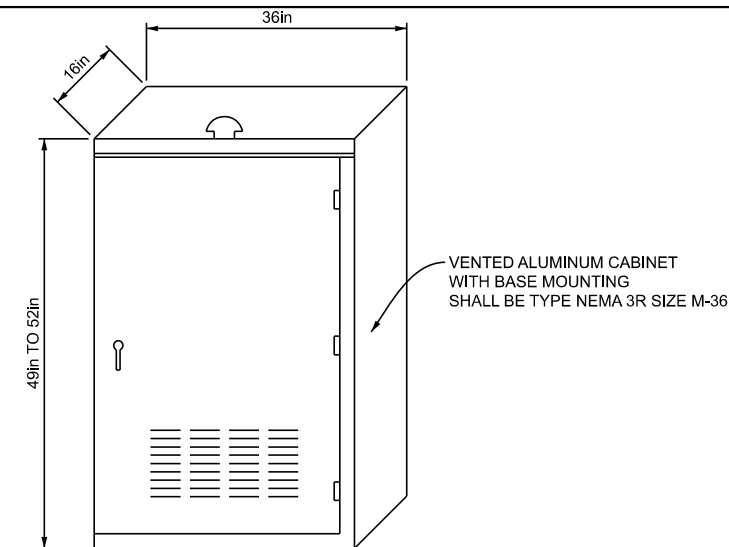


B PLAN
N.T.S.

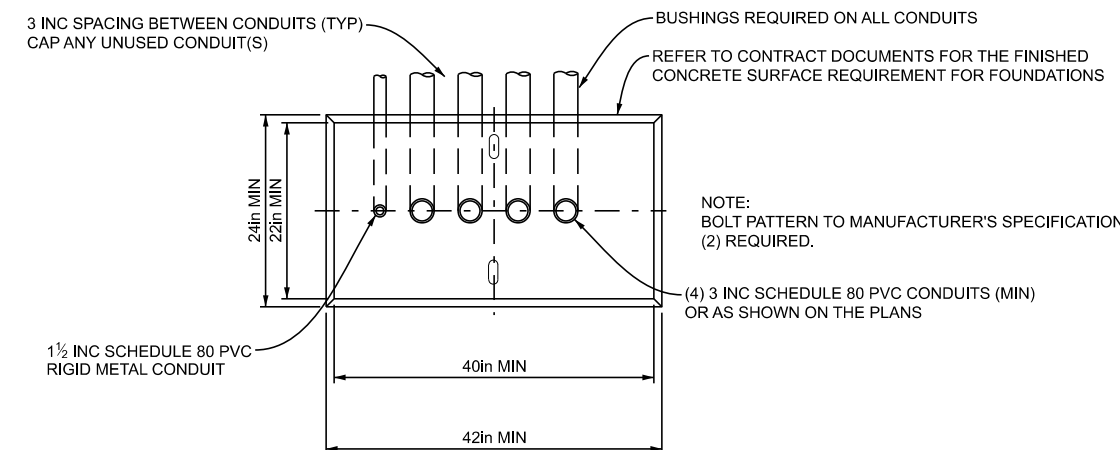


C FDN ELEVATION
N.T.S.

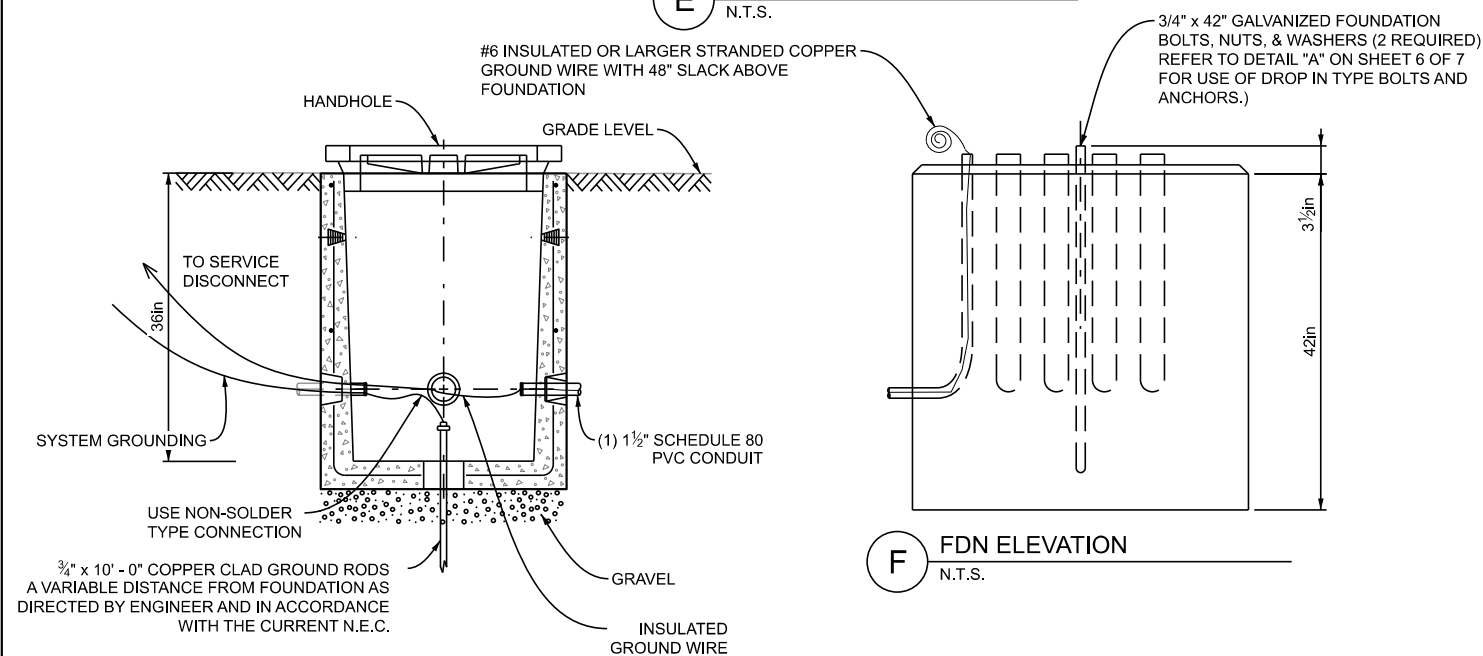
- NOTE:
- 1) GROUNDING SYSTEM SHALL MEASURE 10 OHM OR LESS TO GROUND, WITH A 10' (MIN) SPACING BETWEEN GROUND RODS.
 - 2) ALL INSULATED JACKETS ARE TO REMAIN ON CABLE ENTERING CONTROLLER.
 - 3) KEEP 1-3" CONDUIT ON LEFT SIDE OPEN FOR I.T.S.



D BASE MTD TRAFFIC SIGNAL CONTROLLER CABINET
N.T.S.



E PLAN
N.T.S.



F FDN ELEVATION
N.T.S.

APPROVED BY: _____
DIRECTOR, BUREAU OF FIELD SERVICES

APPROVED BY: _____
DIRECTOR, BUREAU OF DEVELOPMENT



DEPARTMENT DIRECTOR
BRADLEY C. WIEFERICH, PE

STANDARD PLAN FOR
BASE MOUNTED T.S.
CONTROLLER CABINET/FOUNDATIONS

(SPECIAL DETAIL)	11/05/25	SIG-110-A	SHEET 1 OF 7
FHWA APPROVAL	PLAN DATE		



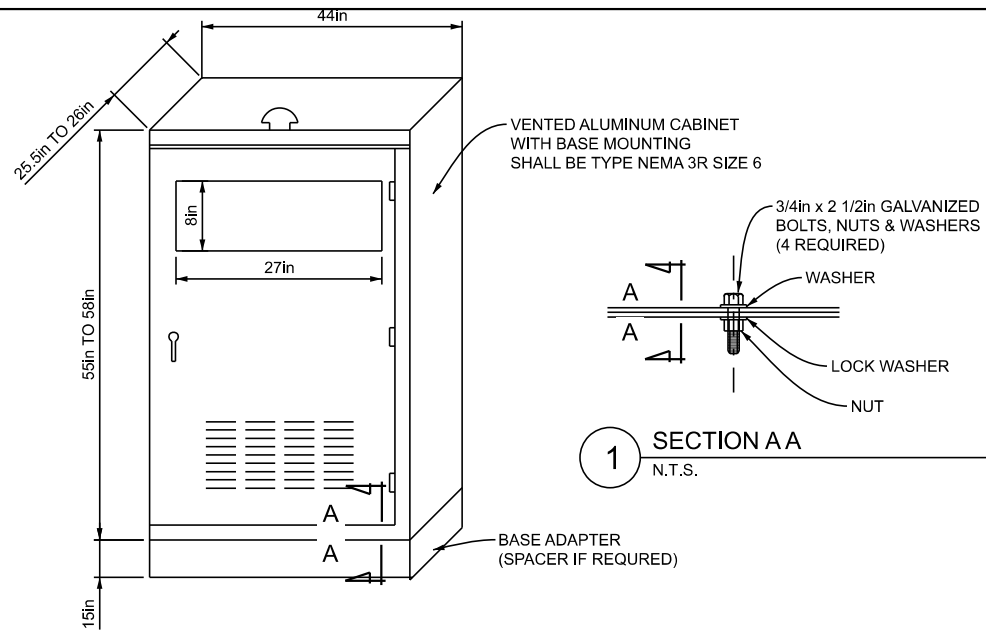
DEPARTMENT DIRECTOR
BRADLEY C. WIEFERICH, PE

STANDARD PLAN FOR
BASE MOUNTED T.S.
CONTROLLER CABINET/FOUNDATIONS

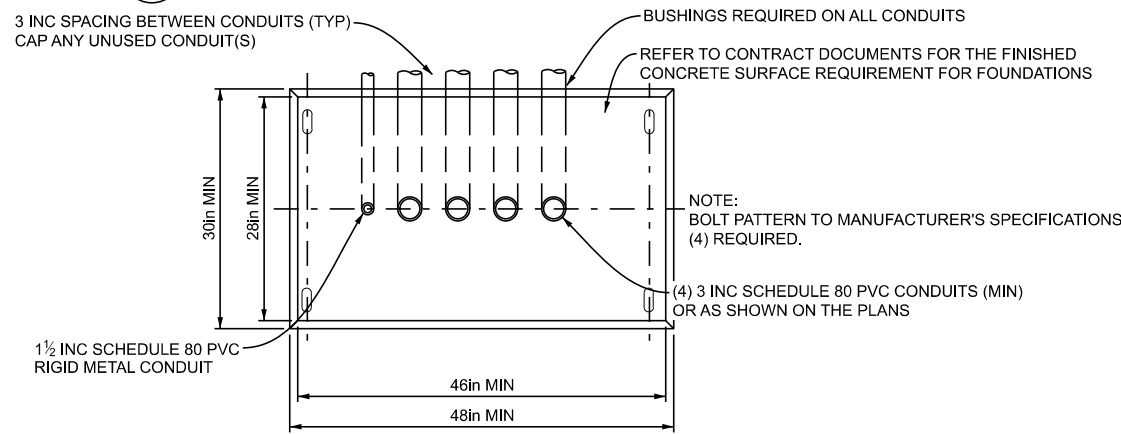
(SPECIAL DETAIL)	11/05/25	SIG-110-A	SHEET 2 OF 7
FHWA APPROVAL	PLAN DATE		

SECT

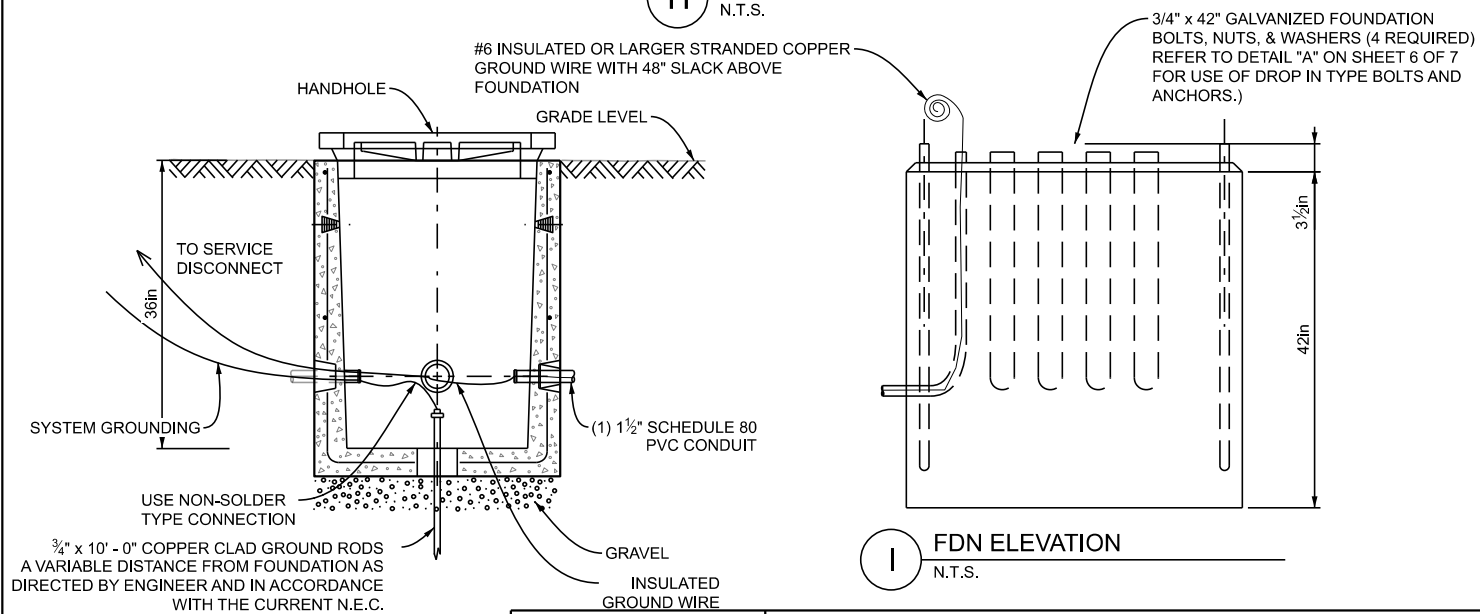
- NOTE:
- 1) GROUNDING SYSTEM SHALL MEASURE 10 OHM OR LESS TO GROUND, WITH A 10' (MIN) SPACING BETWEEN GROUND RODS.
 - 2) ALL INSULATED JACKETS ARE TO REMAIN ON CABLE ENTERING CONTROLLER.
 - 3) KEEP 1-3" CONDUIT ON LEFT SIDE OPEN FOR I.T.S.



G BASE MTD TRAFFIC SIGNAL CONTROLLER CABINET
N.T.S.



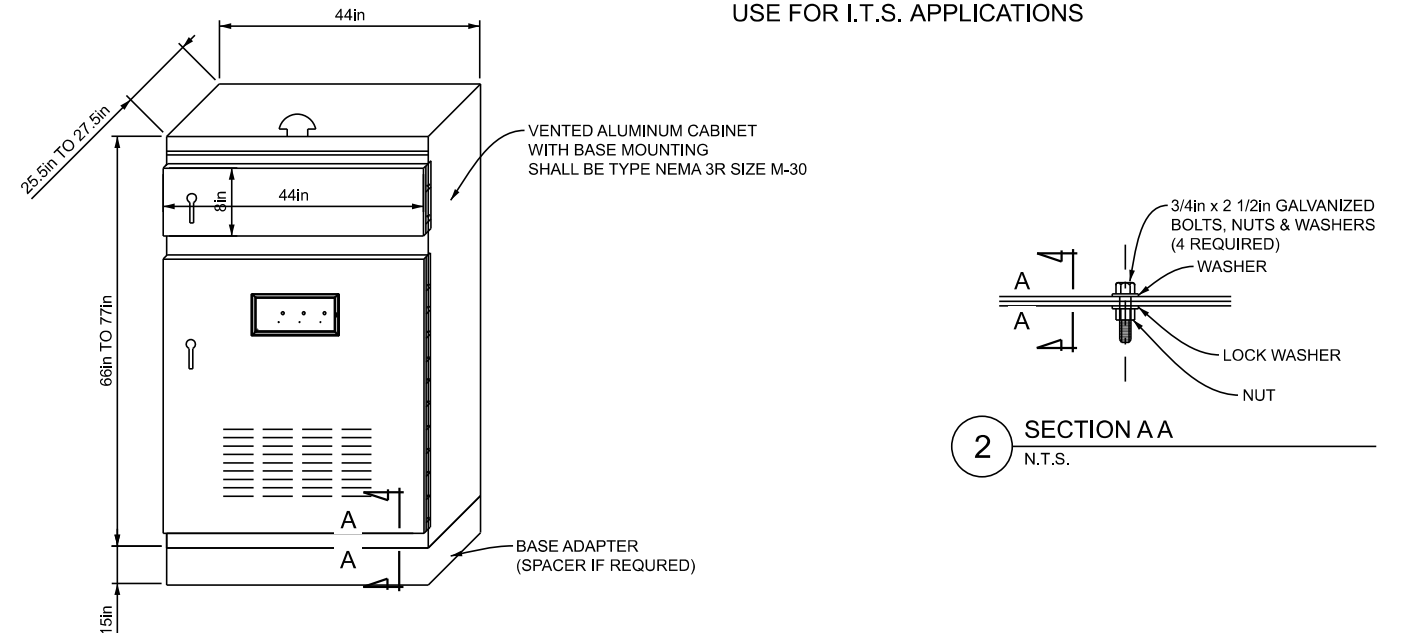
H PLAN
N.T.S.



I FDN ELEVATION
N.T.S.

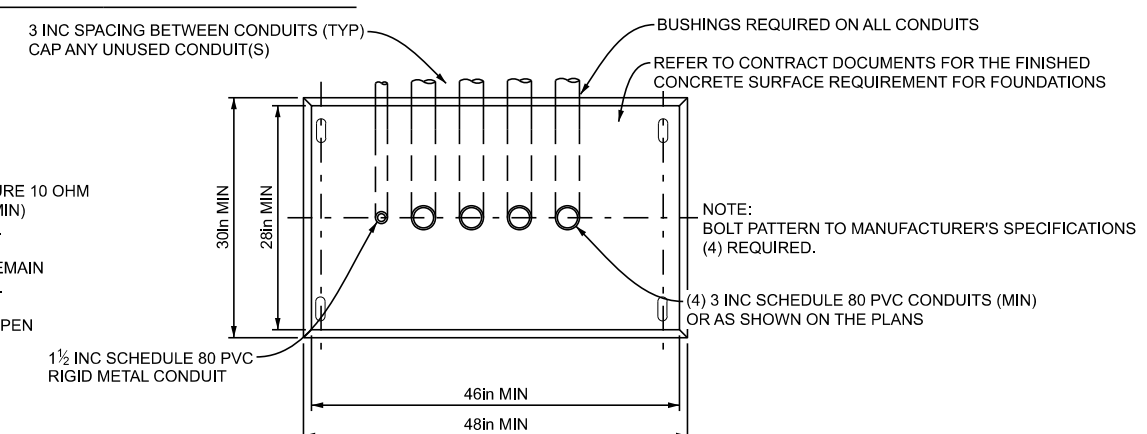
 Michigan Department of Transportation DEPARTMENT DIRECTOR BRADLEY C. WIEFERICH, PE	STANDARD PLAN FOR BASE MOUNTED T.S. CONTROLLER CABINET/FOUNDATIONS			SHEET 3 OF 7
	(SPECIAL DETAIL) FHWA APPROVAL	11/05/25 PLAN DATE	SIG-110-A	

USE FOR I.T.S. APPLICATIONS

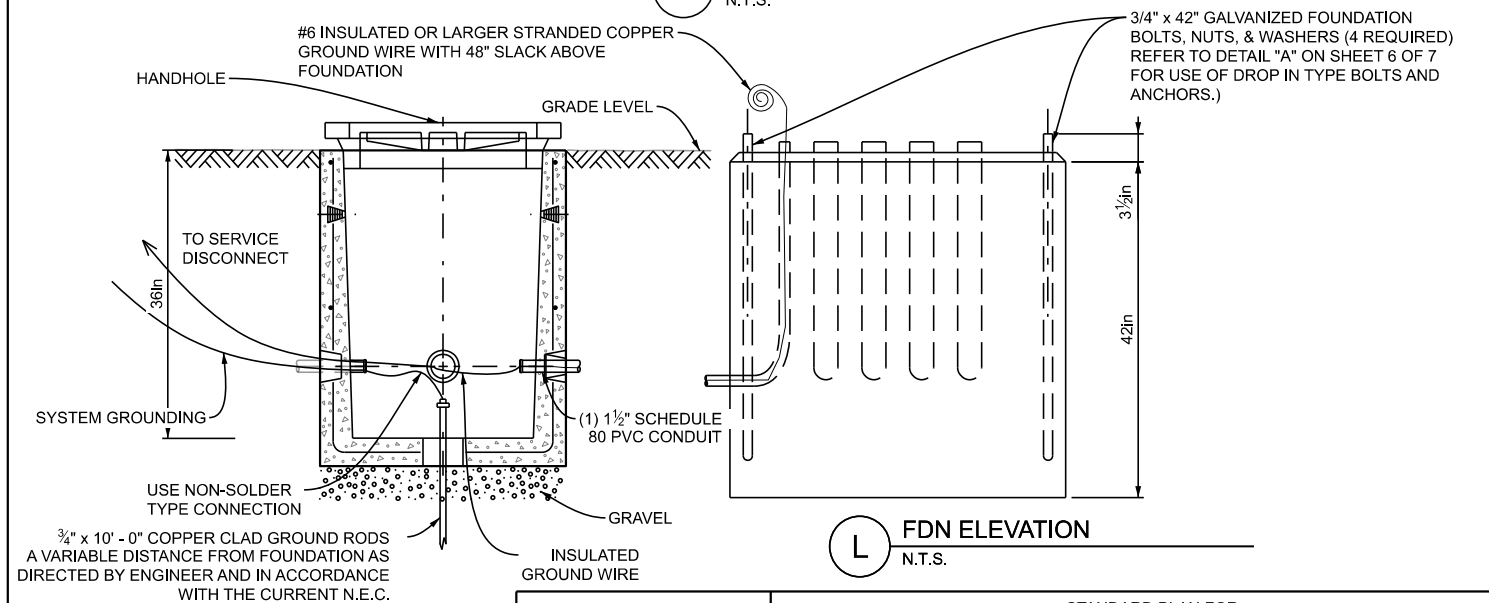


J BASE MTD TRAFFIC SIGNAL CONTROLLER CABINET
N.T.S. (I.T.S. CABINET IF USED)

- NOTE:
- 1) GROUNDING SYSTEM SHALL MEASURE 10 OHM OR LESS TO GROUND, WITH A 10' (MIN) SPACING BETWEEN GROUND RODS.
 - 2) ALL INSULATED JACKETS ARE TO REMAIN ON CABLE ENTERING CONTROLLER.
 - 3) KEEP 1-3" CONDUIT ON LEFT SIDE OPEN FOR I.T.S.

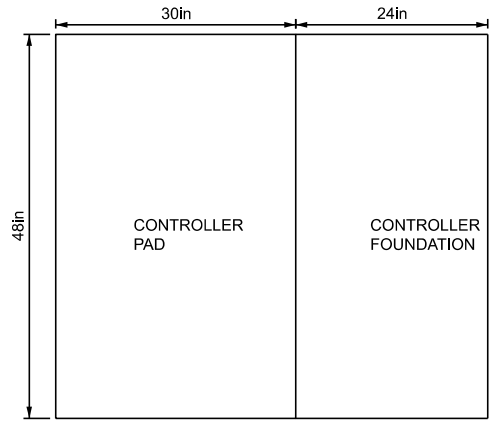
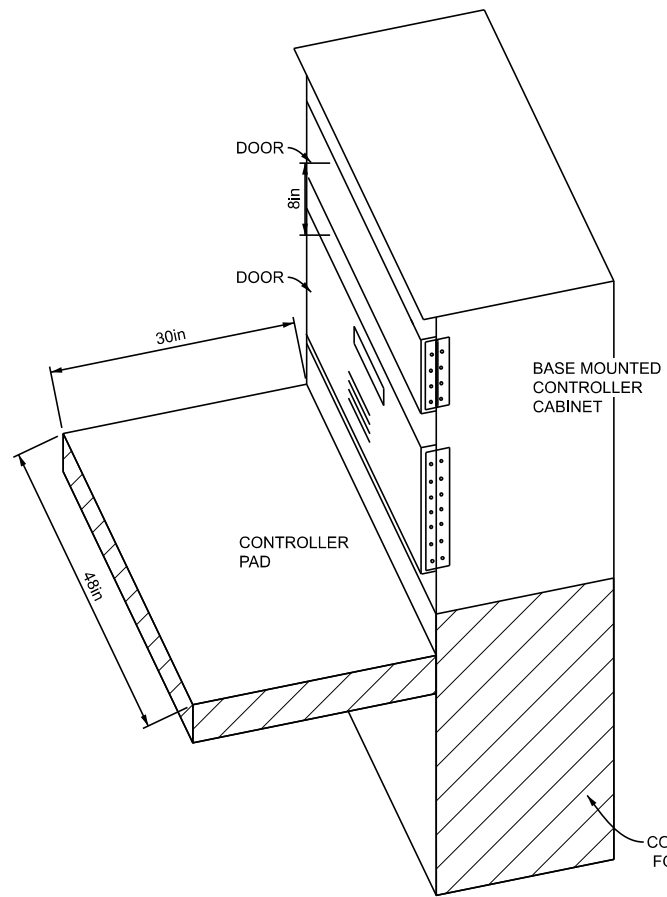


K FDN PLAN
N.T.S.

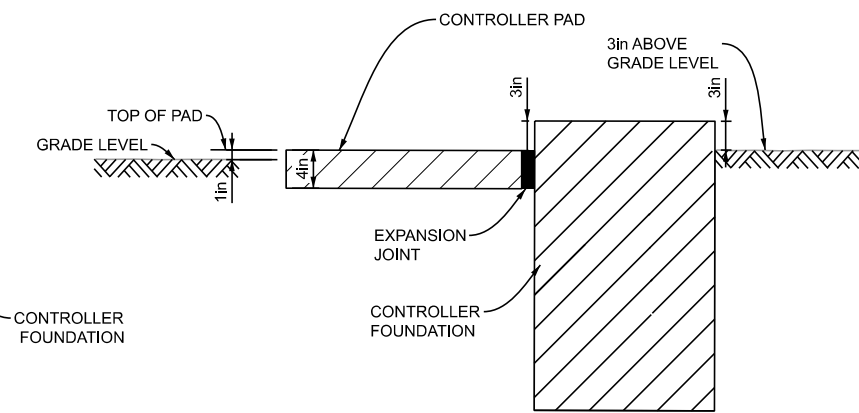


L FDN ELEVATION
N.T.S.

 Michigan Department of Transportation DEPARTMENT DIRECTOR BRADLEY C. WIEFERICH, PE	STANDARD PLAN FOR BASE MOUNTED T.S. CONTROLLER CABINET/FOUNDATIONS			SHEET 4 OF 7 SECT
	(SPECIAL DETAIL) FHWA APPROVAL	11/05/25 PLAN DATE	SIG-110-A	



M TOP VIEW
N.T.S.

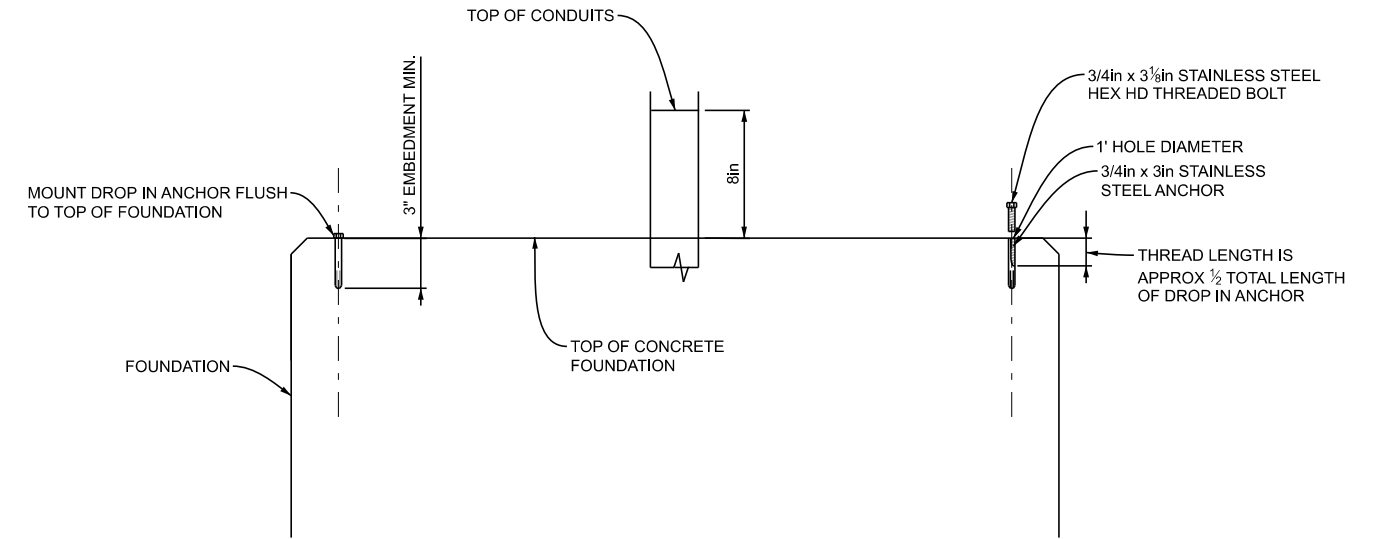


N SIDE VIEW
N.T.S.

O BASE MOUNTED CONTROLLER PAD
N.T.S.

NOTE:
PAYMENT FOR CONTROLLER PAD TO BE INCLUDED IN CONTROLLER FOUNDATION PAY ITEM
CONTROLLER CABINET DOOR TO OPEN TOWARD PAD.

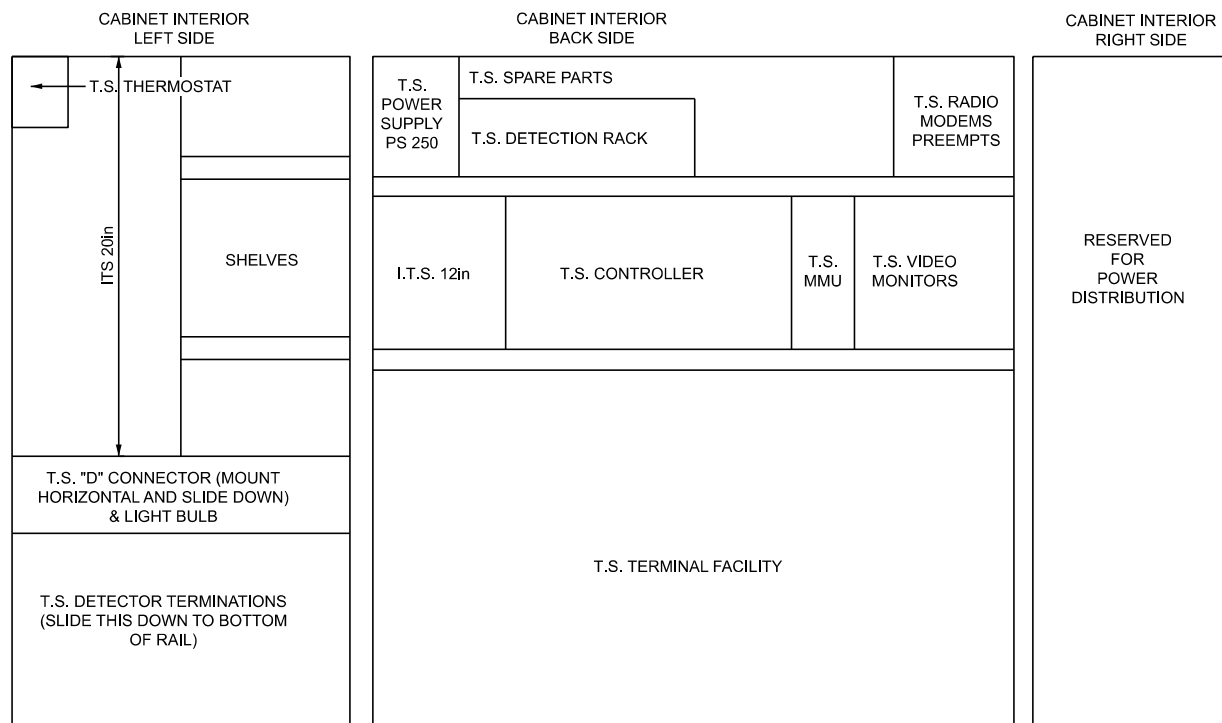
	STANDARD PLAN FOR BASE MOUNTED T.S. CONTROLLER CABINET/FOUNDATIONS			SHEET 5 OF 7
	(SPECIAL DETAIL) FHWA APPROVAL	11/05/25 PLAN DATE	SIG-110-A	



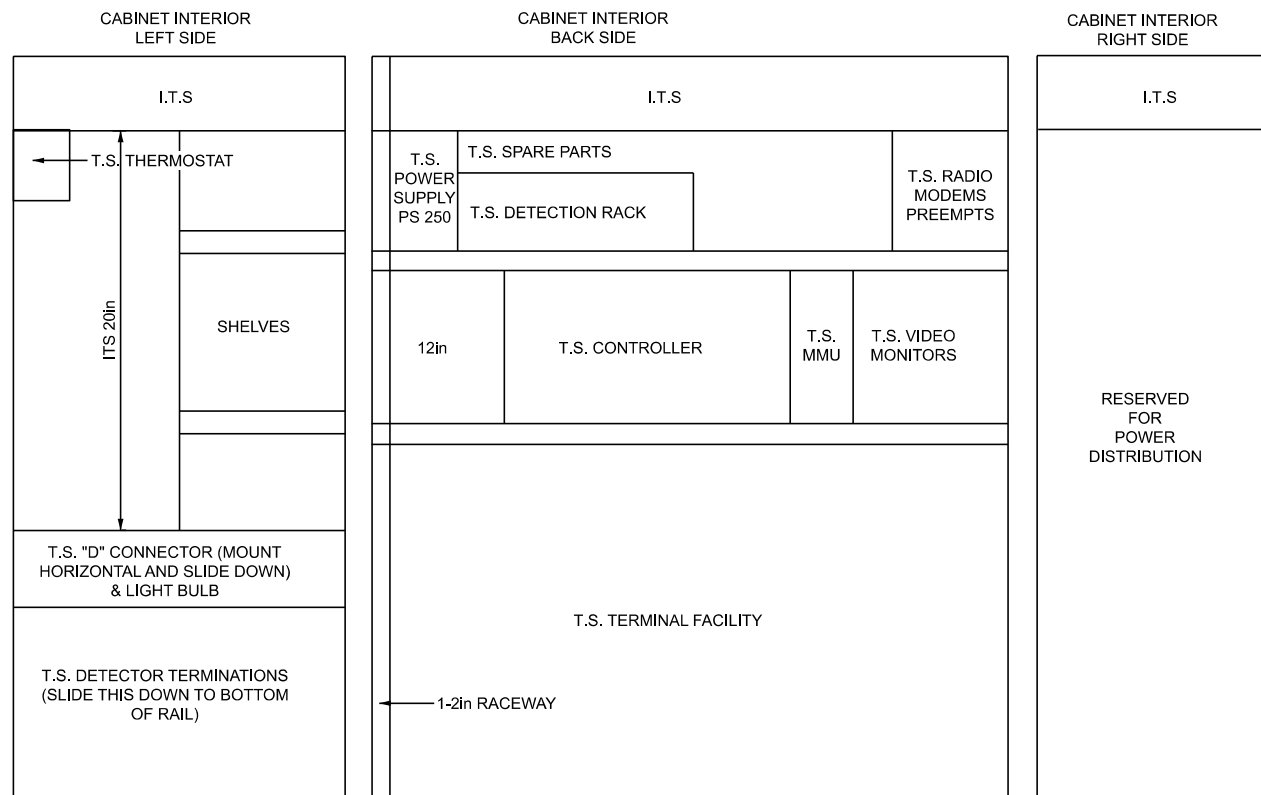
- NOTES:
- USE AISI 300 SERIES STAINLESS STEEL FOR ALL BOLTS AND ANCHORS.
 - USE DROP IN FOUNDATION BOLTS AND ANCHORS AS DIRECTED BY THE ENGINEER.

P ALTERNATIVE DET "A": DROP IN FDN BOLTS & ANCHORS
N.T.S.

	STANDARD PLAN FOR BASE MOUNTED T.S. CONTROLLER CABINET/FOUNDATIONS			SHEET 6 OF 7 SECT
	(SPECIAL DETAIL) FHWA APPROVAL	11/05/25 PLAN DATE	SIG-110-A	



Q TRAFFIC SIGNAL NEMA 3R SIZE 6
N.T.S. CABINET REQUIREMENTS



R TRAFFIC SIGNAL NEMA 3R SIZE 6 STRETCH
N.T.S. CABINET REQUIREMENTS FOR ITS APPLICATIONS

<p>DEPARTMENT DIRECTOR BRADLEY G. WIEFERICH, PE</p>	STANDARD PLAN FOR BASE MOUNTED T.S. CONTROLLER CABINET/FOUNDATIONS			SHEET 7 OF 7
	(SPECIAL DETAIL) FHWA APPROVAL	11/05/25 PLAN DATE	SIG-110-A	