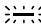

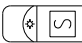
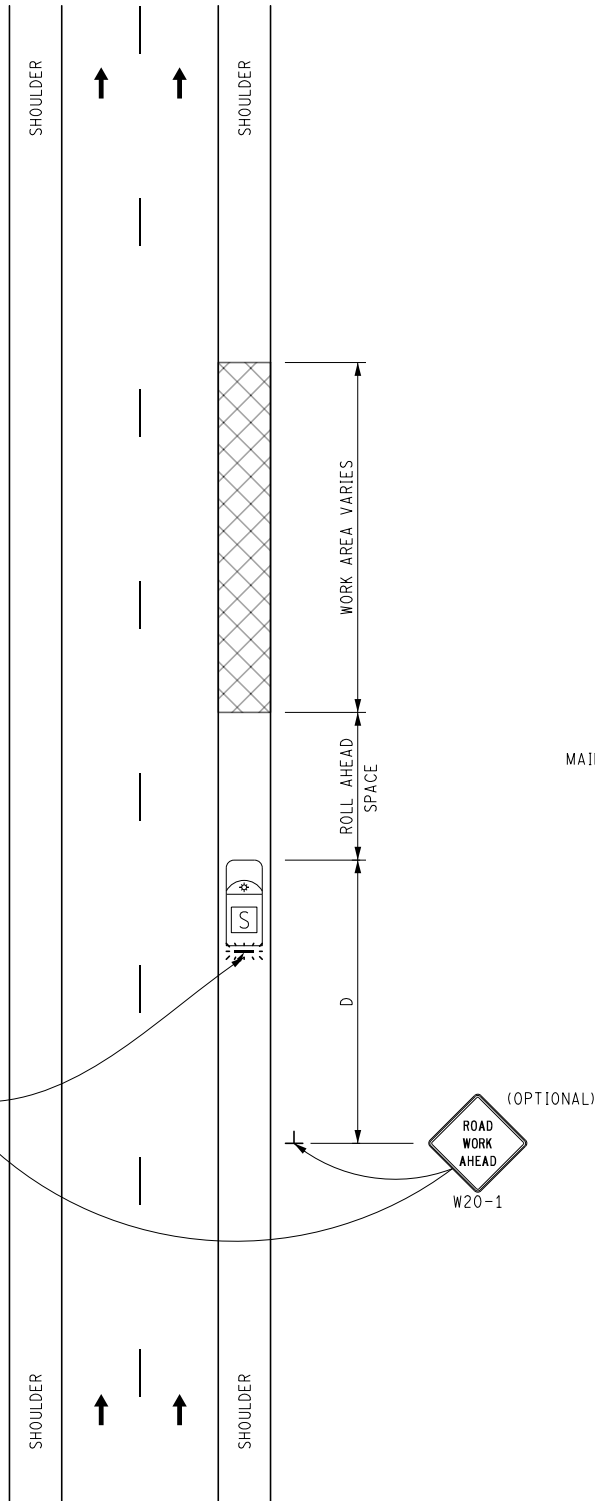


KEY

-  LIGHTED ARROW PANEL (CAUTION MODE)
-  TRAFFIC FLOW
-  SHADOW VEHICLE WITH OPTIONAL TRUCK MOUNTED ATTENUATOR



NOTES

THERE MUST BE EITHER AN APPROPRIATELY MARKED VEHICLE WITH A ROTATING BEACON OR OPTIONAL W20-1 SIGNS TO INDICATE TO THE PUBLIC THAT WORK IS BEING DONE IN THE AREA.

STANDARD NOTES

(SEE 102-GEN-NOTES)

GENERAL: G1, G2, G3, G4
 SIGNING: S1
 MAINT & SURV: MS2, MS3, MS4

LIGHTED ARROW PANEL (CAUTION MODE)

(OPTIONAL)



NOT TO SCALE

 FILE: 4420-M-FW-SHL.dgn	MAINTENANCE MAINTAINING TRAFFIC TYPICAL	DURATION: SHORT-DURATION MOBILE	SHOULDER WORK ON A DIVIDED ROADWAY OR FREEWAY	DATE: MAY 2021
				NO: 4420-M-FW-SHL SHEET: 1 OF 1