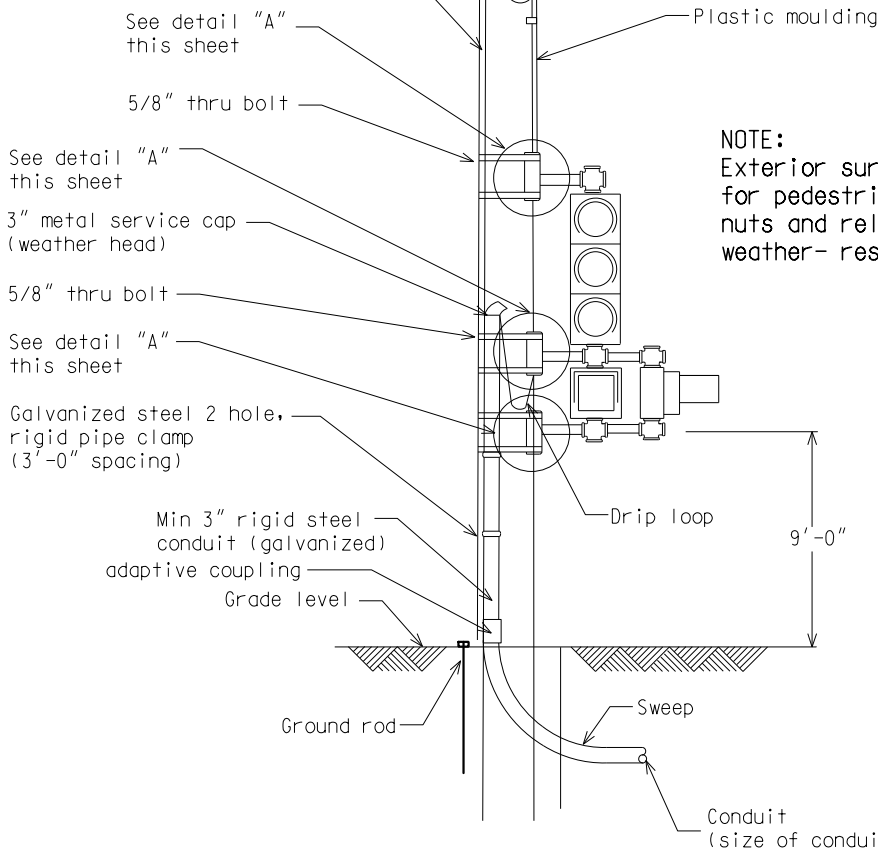


Wood pole

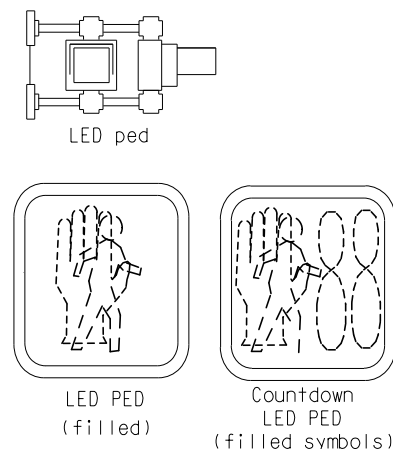
Multiconductor traffic signal cable.
Sag for drip loop (9" radius min.).

Above 10' above grade use plastic moulding,
below 10' use 1/2" rigid steel conduit
(galvanized) (grounding)

Ground wire #6 AWG



NOTE:
Exterior surface of all mounting assemblies for pedestrian signals including brackets, nuts and related hardware shall be weather-resistant black enamel.

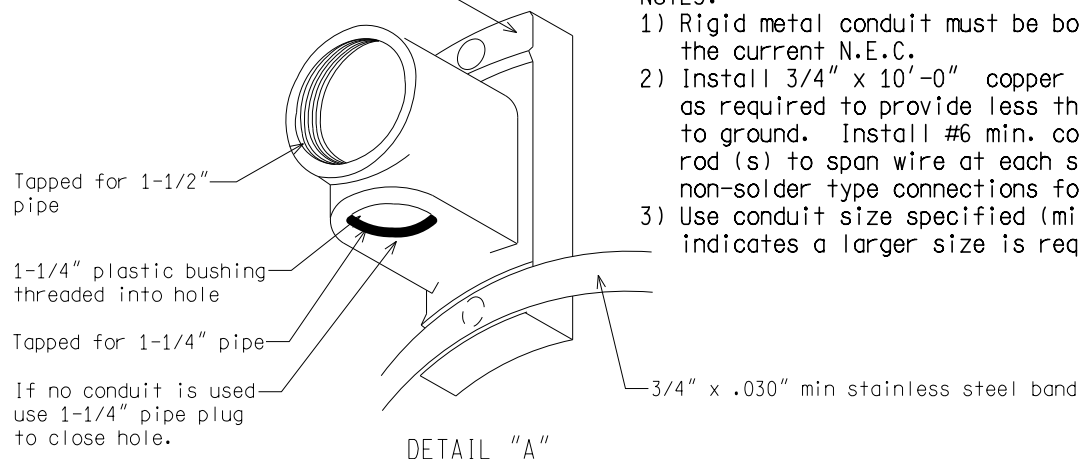


3/4" x .030" min stainless steel band (for top mounting bracket use 5/8" thru-bolt on top, use band on bottom. See "wood pole" detail this sheet)

WOOD POLE

NOTES:

- 1) Rigid metal conduit must be bonded according to the current N.E.C.
- 2) Install 3/4" x 10'-0" copper clad ground rod (s) as required to provide less than 10 ohm resistance to ground. Install #6 min. copper wires from ground rod (s) to span wire at each supporting pole using non-solder type connections for span wire ground.
- 3) Use conduit size specified (min.) unless current N.E.C. indicates a larger size is required.



DETAIL "A"

NOT TO SCALE

File: PW:RD/TR/Signals/WC SD/Final

Rev. 10/21/14



PREPARED BY
TRAFFIC AND SAFETY

ENGINEER OF DELIVERY

ENGINEER OF DEVELOPMENT

(SPECIAL DETAIL)
FHWA APPROVAL DATE

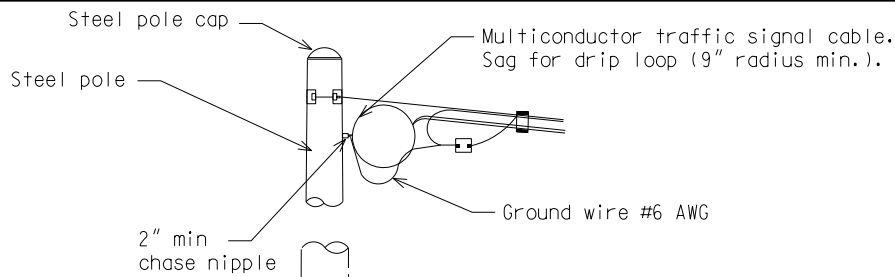
DRAWN BY: DJF
CHECKED BY:

PLAN DATE

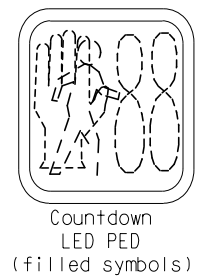
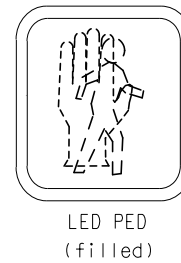
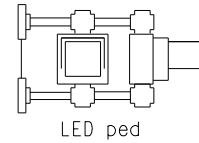
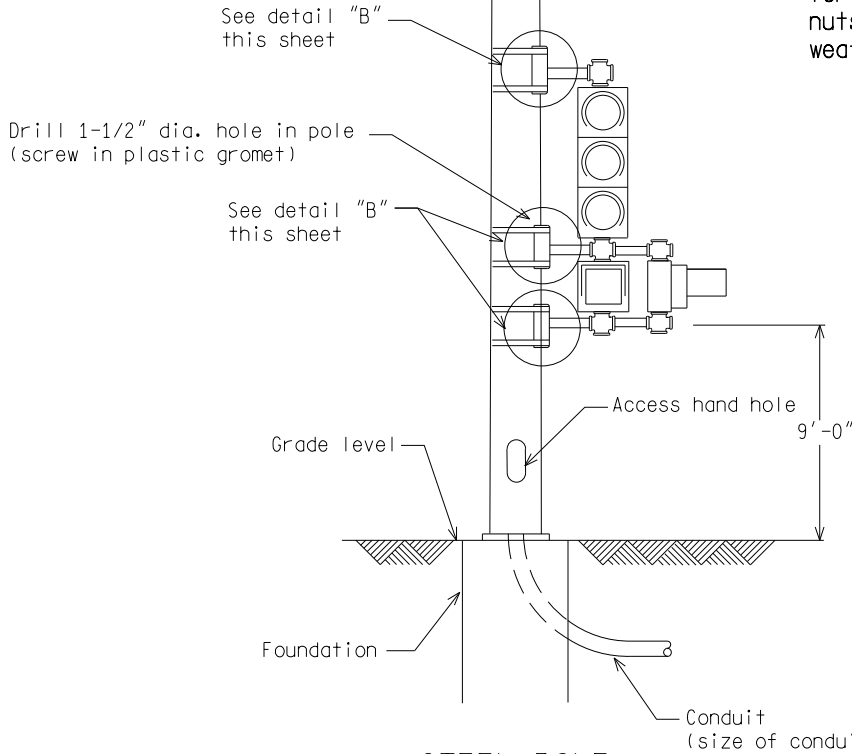
MICHIGAN DEPARTMENT OF TRANSPORTATION
BUREAU OF HIGHWAYS DELIVERY STANDARD PLAN FOR
**TYPICAL POLE MOUNTED
PEDESTRIAN SIGNALS**

WC-029-C

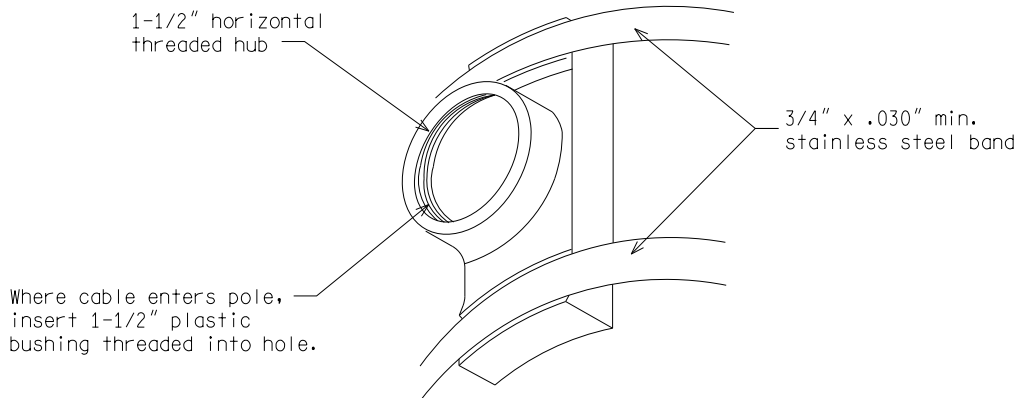
SHEET
1 of 4



NOTE:
Exterior surface of all mounting assemblies for pedestrian signals including brackets, nuts and related hardware shall be weather-resistant black enamel.



STEEL POLE



DETAIL "B"

NOT TO SCALE

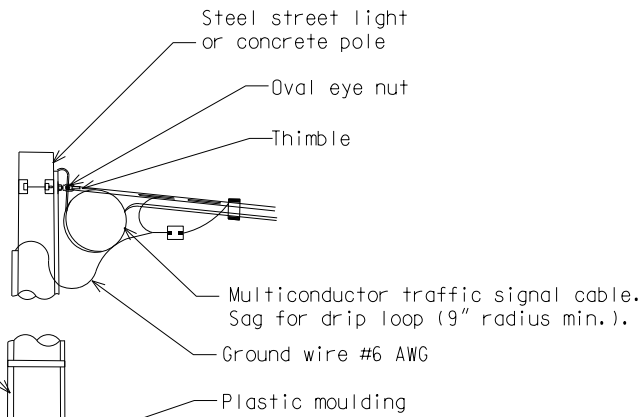
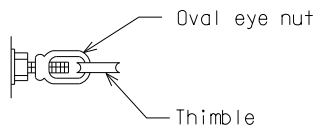
MICHIGAN DEPARTMENT OF TRANSPORTATION
BUREAU OF HIGHWAYS DELIVERY STANDARD PLAN

(SPECIAL DETAIL)
FHWA APPROVAL DATE

PLAN DATE

WC-029-C

SHEET
2 of 4



Above 10' above grade use plastic moulding, below 10' use 1/2" rigid steel conduit (galvanized) (grounding)

See detail "C" this sheet

3" metal service cap (galvanized)

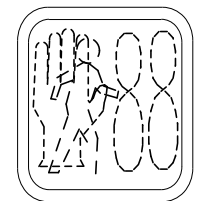
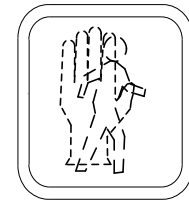
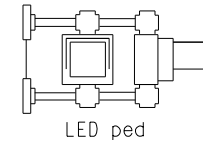
See detail "C" this sheet

Min. 3" rigid steel conduit (galvanized)

3/4" stainless steel banding (3'-0" spacing) see detail "D" sheet 4 of 4
Grade level

Ground rod

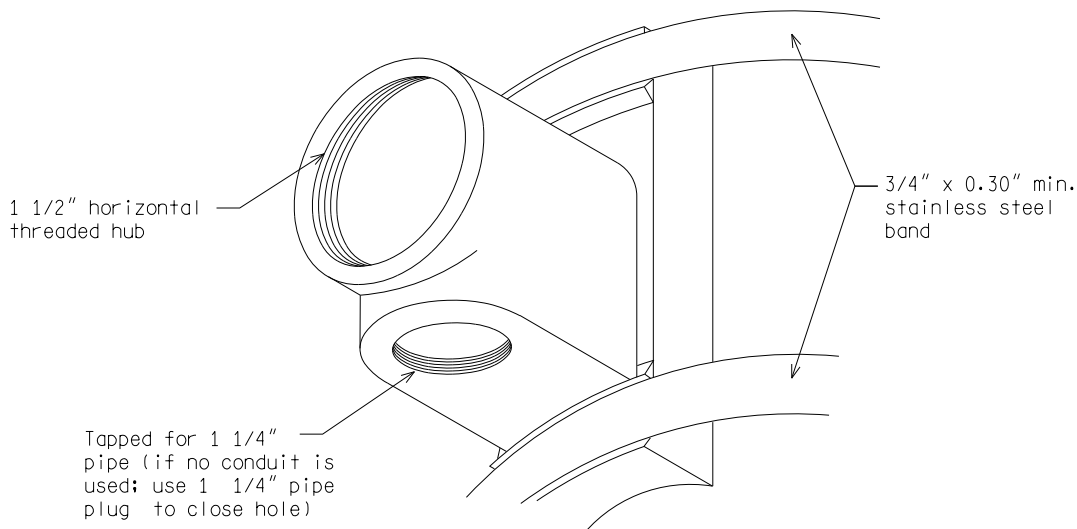
NOTE:
Exterior surface of all mounting assemblies for pedestrian signals including brackets, nuts and related hardware shall be weather-resistant black enamel.



Sweep

Conduit (size of conduit as shown on plans)

(STEEL STREET POLE OR CONCRETE POLE)



DETAIL "C"

NOT TO SCALE

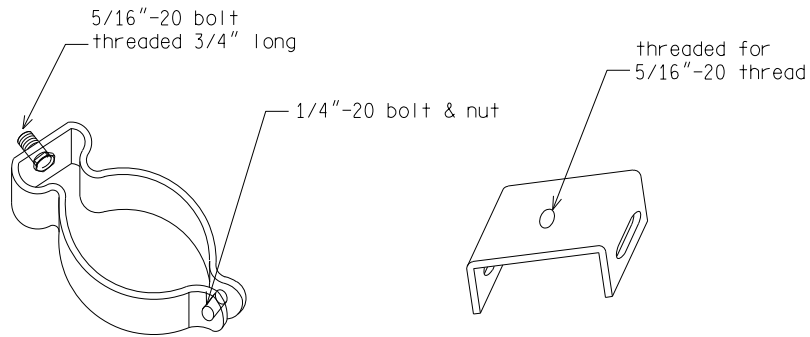
MICHIGAN DEPARTMENT OF TRANSPORTATION
BUREAU OF HIGHWAYS DELIVERY STANDARD PLAN

(SPECIAL DETAIL)
FHWA APPROVAL DATE

PLAN DATE

WC-029-C

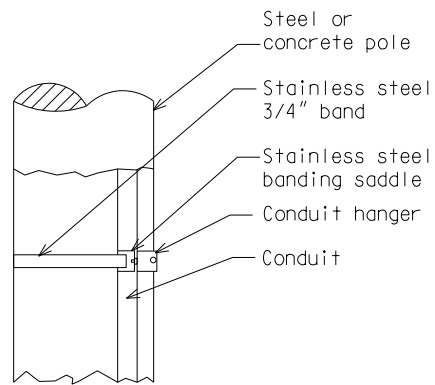
SHEET
3 of 4



HANGER

To fit conduit size hanger
as called for on plans
(zinc plated)

BANDING SADDLE



DETAIL "D"

TYPICAL CONDUIT ATTACHMENT
TO STEEL OR CONCRETE POLE

NOT TO SCALE

MICHIGAN DEPARTMENT OF TRANSPORTATION
BUREAU OF HIGHWAYS DELIVERY STANDARD PLAN

(SPECIAL DETAIL)
FHWA APPROVAL DATE

PLAN DATE

WC-029-C

SHEET
4 of 4