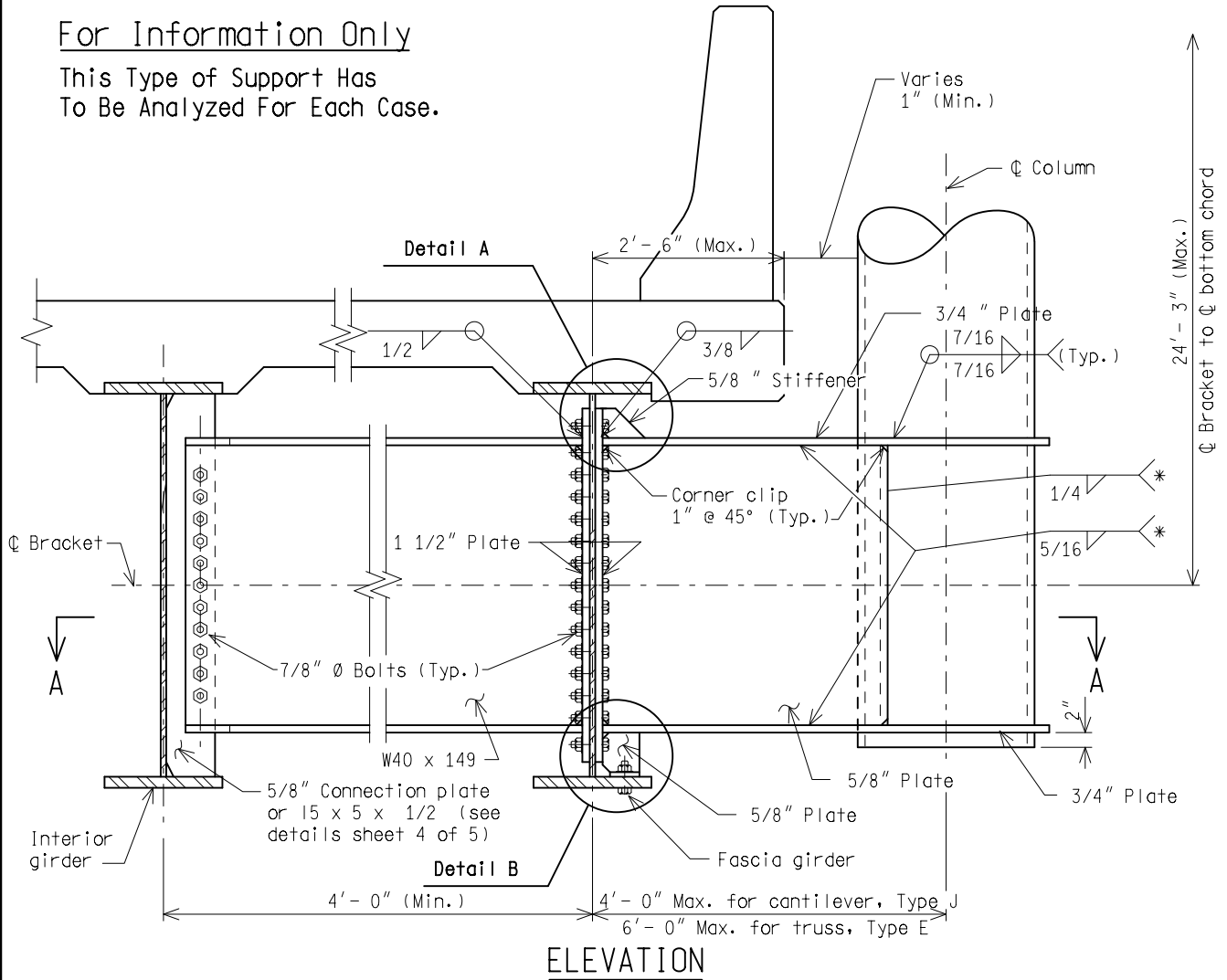
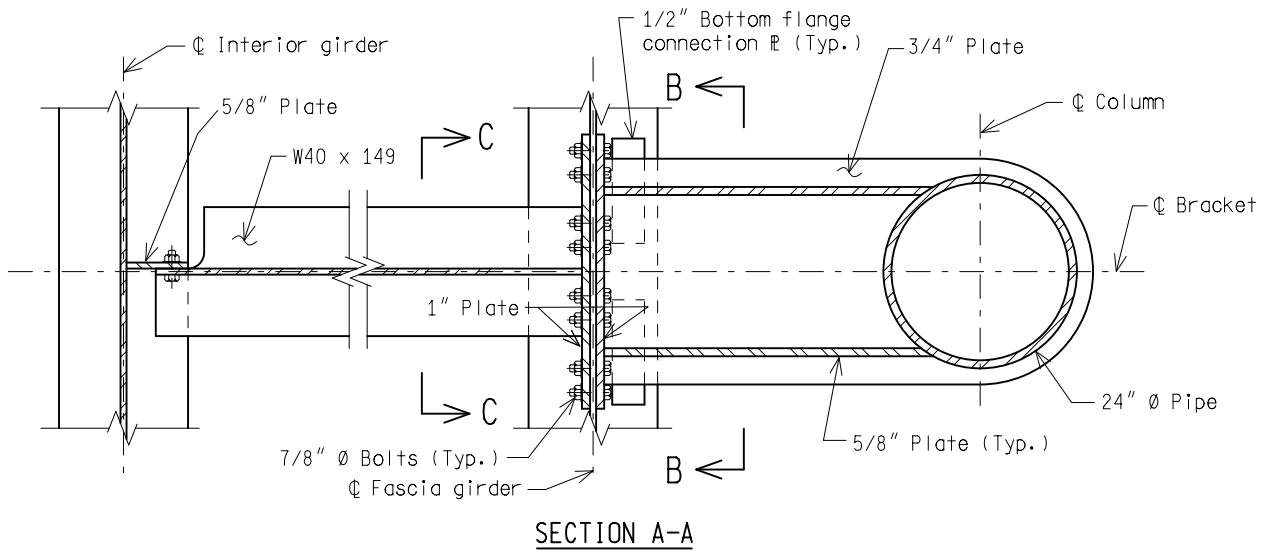


For Information Only

This Type of Support Has
To Be Analyzed For Each Case.



* Stop weld 1/4" short of corner clips



MDOT
Michigan Department of Transportation

PREPARED BY
DESIGN DIVISION

DRAWN BY: DHD

CHECKED BY: AJU

DEPARTMENT DIRECTOR
Kirk T. Stuedle

APPROVED BY: Randy U. Pittler
DIRECTOR, BUREAU OF FIELD SERVICES

APPROVED BY: Paul A. Van Park
DIRECTOR, BUREAU OF HIGHWAY DEVELOPMENT

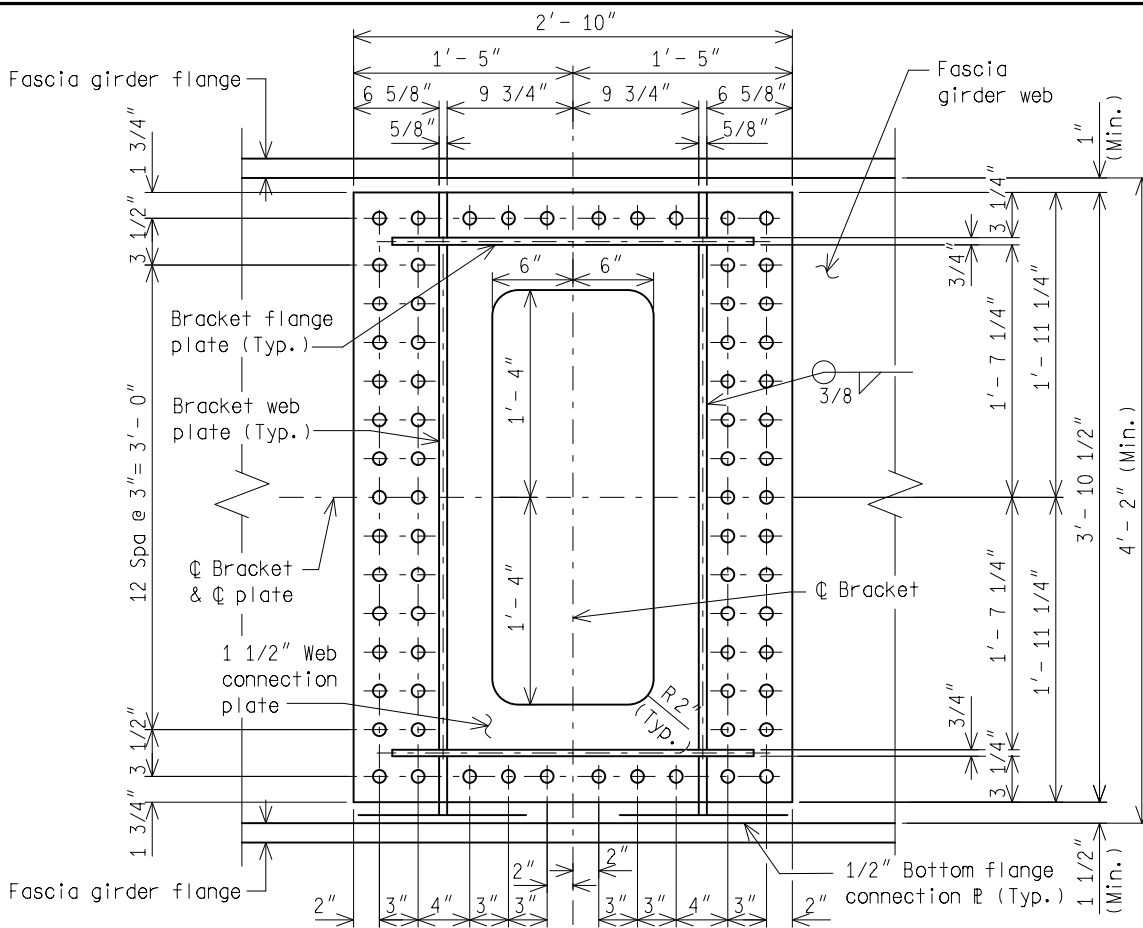
MICHIGAN DEPARTMENT OF TRANSPORTATION
BUREAU OF HIGHWAY DEVELOPMENT STANDARD PLAN FOR
**BRIDGE SUPPORT BRACKET FOR
STEEL TRUSS, TYPE E & STEEL
CANTILEVER TRUSS, TYPE J**

09/15/11
F.H.W.A. APPROVAL

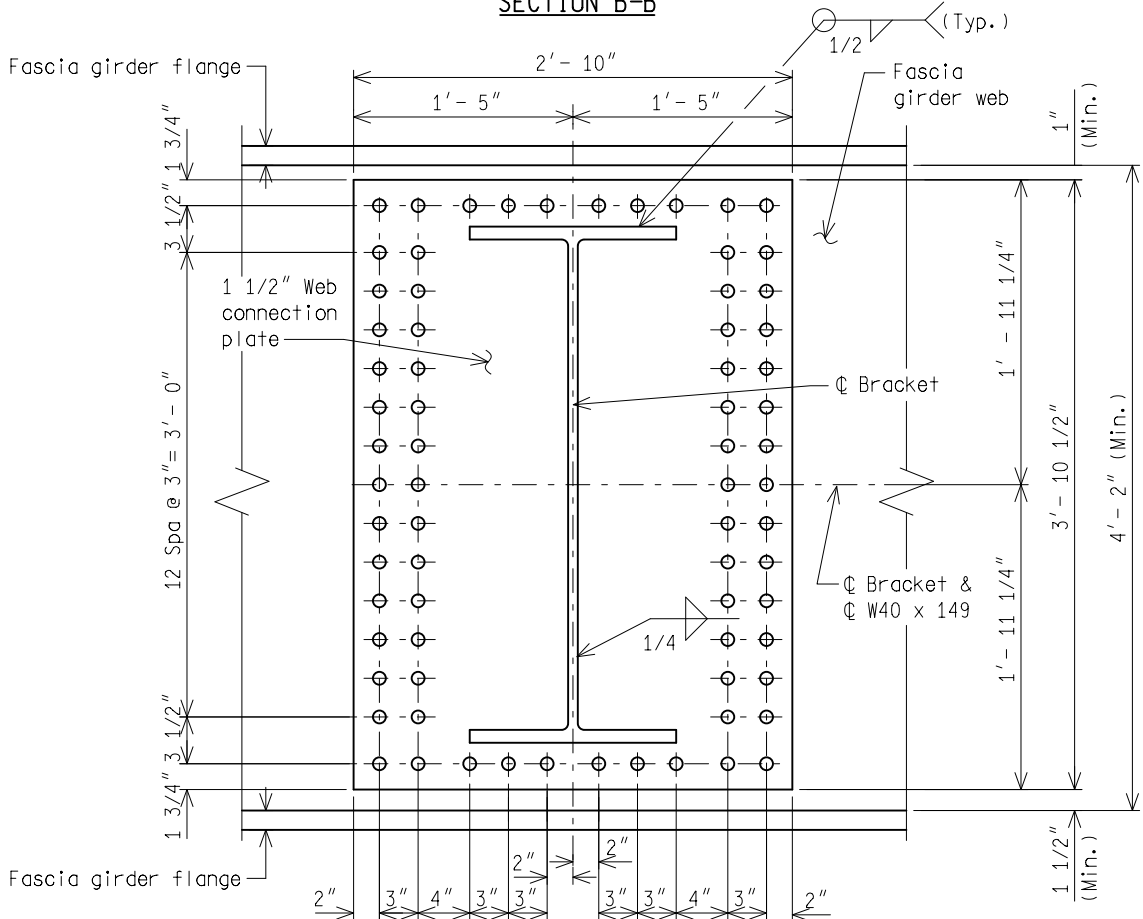
08/11/11
PLAN DATE

SIGN-380-A

SHEET
1 OF 5



SECTION B-B

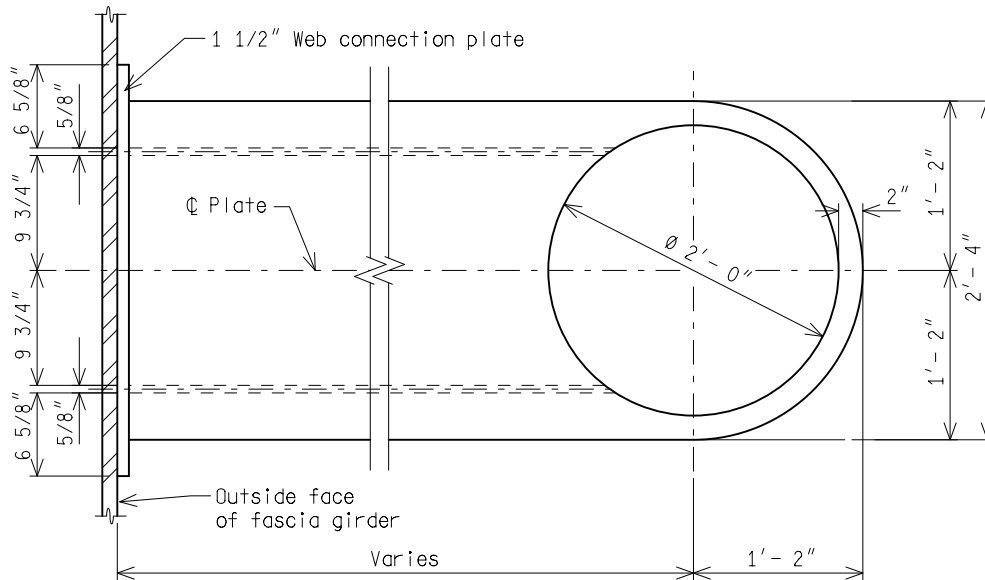


SECTION C-C

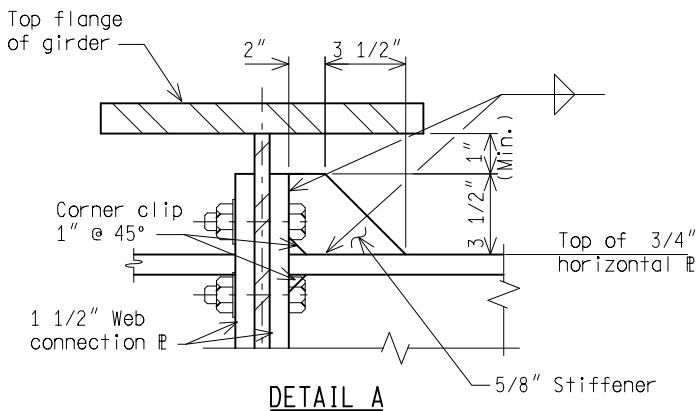
NOT TO SCALE

MICHIGAN DEPARTMENT OF TRANSPORTATION BUREAU OF HIGHWAY DEVELOPMENT STANDARD PLAN	09/15/11 F.H.W.A. APPROVAL	08/11/11 PLAN DATE	SIGN-380-A	SHEET 2 OF 5
--	-------------------------------	-----------------------	-------------------	-----------------

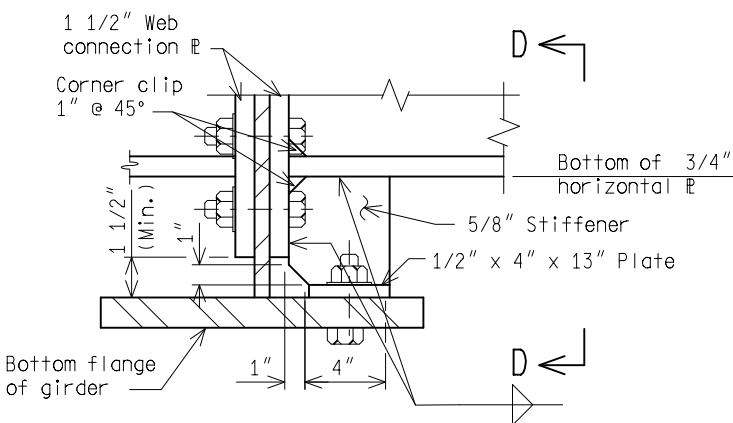
NOTE: THE ORIGINAL SIGNED COPY IS KEPT ON FILE AT THE MICHIGAN DEPARTMENT OF TRANSPORTATION.



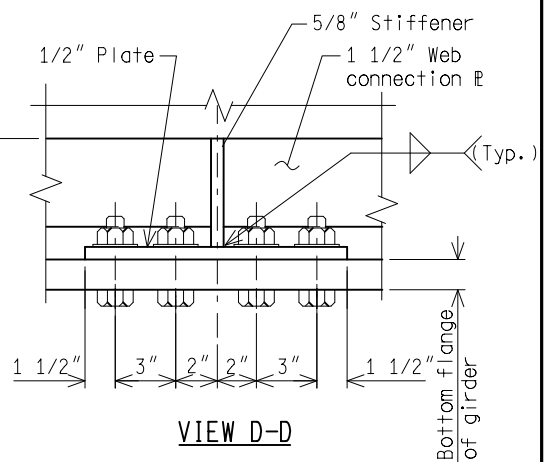
CONNECTION PLATE DETAIL



DETAIL A



DETAIL B



VIEW D-D

NOT TO SCALE

MICHIGAN DEPARTMENT OF TRANSPORTATION
BUREAU OF HIGHWAY DEVELOPMENT STANDARD PLAN

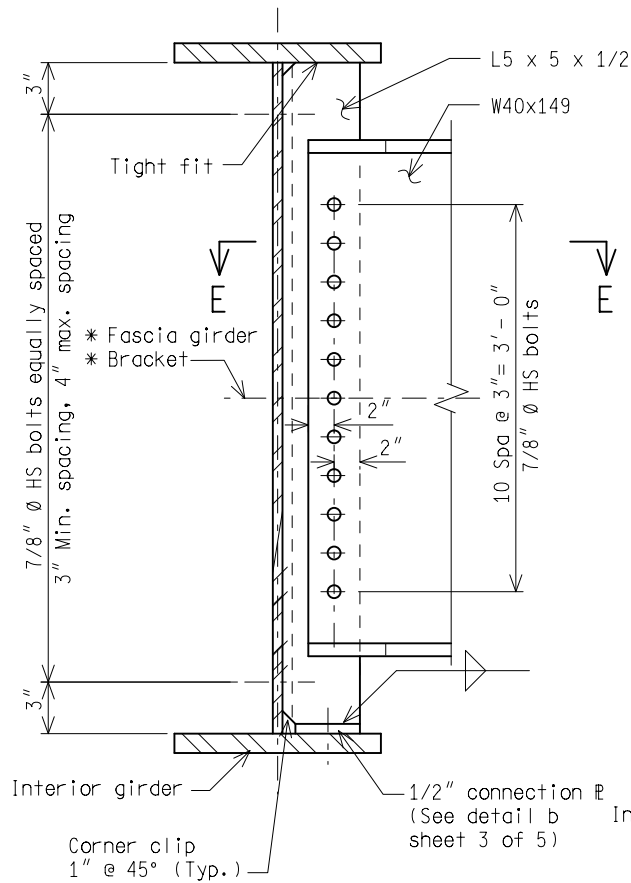
09/15/11
F.H.W.A. APPROVAL

08/11/11
PLAN DATE

SIGN-380-A

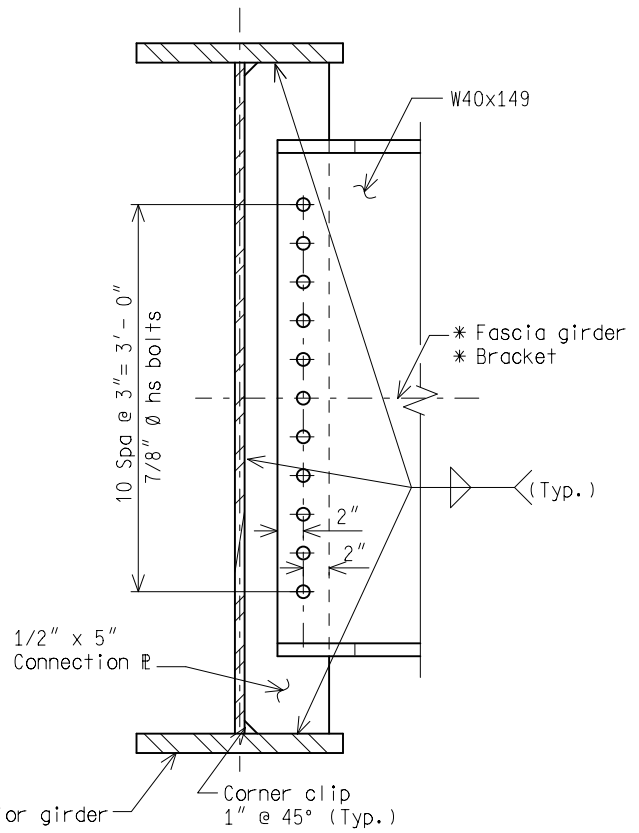
SHEET
3 OF 5

NOTE: THE ORIGINAL SIGNED COPY IS KEPT ON FILE AT THE MICHIGAN DEPARTMENT OF TRANSPORTATION.



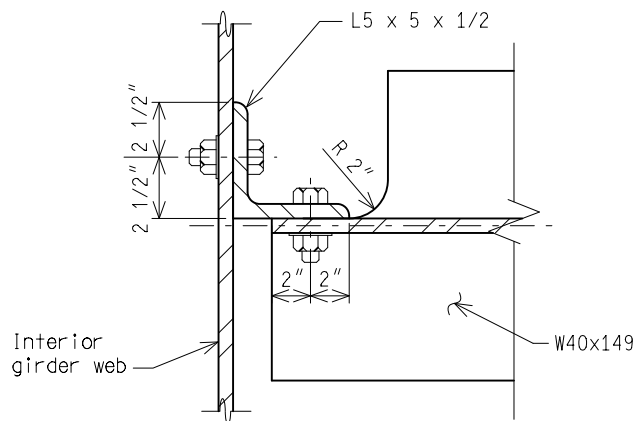
**INTERIOR GIRDER
CONNECTION DETAIL**

(TO BE USED WITH EXISTING BEAM)



**ALTERNATE INTERIOR GIRDER
CONNECTION DETAIL**

(TO BE USED WITH NEW CONSTRUCTION)



SECTION E-E

NOT TO SCALE

MICHIGAN DEPARTMENT OF TRANSPORTATION
BUREAU OF HIGHWAY DEVELOPMENT STANDARD PLAN

09/15/11
F.H.W.A. APPROVAL

08/11/11
PLAN DATE

SIGN-380-A

SHEET
4 OF 5

NOTE: THE ORIGINAL SIGNED COPY IS KEPT ON FILE AT THE MICHIGAN DEPARTMENT OF TRANSPORTATION.

NOTES:

1. Additional analysis may be required if conditions other than those shown on these plans exist or to ensure that the additional loading from this connection and from the sign support structure does not exceed the capacity of the bridge.
2. The design of this structure is based on the AASHTO Standard Specifications For Structural Supports For Highway Signs, Luminaires and Traffic signals, current Edition.
3. All structural steel, bolts, welding and galvanizing shall be per "MDOT Standard Specifications For Construction".
4. Blast clean base plates, stiffeners, and all weldments prior to galvanizing.
5. Hot-dip galvanize all components prior to bolted assembly.
6. Tighten all high strength galvanized bolts by the turn of the nut method.
7. All steel plates shall be ASTM A709, Grade 36.
8. Use 7/8" Ø ASTM A325 bolts for all connections. Provide 15/16" Ø holes unless otherwise stated.
9. Beam web depth is limited to 50". Minimum beam spacing is 4' - 0".

NOT TO SCALE

MICHIGAN DEPARTMENT OF TRANSPORTATION BUREAU OF HIGHWAY DEVELOPMENT STANDARD PLAN	09/15/11 F.H.W.A. APPROVAL	08/11/11 PLAN DATE	SIGN-380-A	SHEET 5 OF 5
--	-------------------------------	-----------------------	------------	-----------------

NOTE: THE ORIGINAL SIGNED COPY IS KEPT ON FILE AT THE MICHIGAN DEPARTMENT OF TRANSPORTATION.