

KEY

- CHANNELIZING DEVICES
- ← TRAFFIC FLOW
- REFLECTS EXISTING SPEED LIMIT
- TEMPORARY TRAFFIC SIGNAL
- TEMPORARY PAVEMENT MARKING (SOLID 24" STOP BAR)
- TEMPORARY CONCRETE BARRIER WALL
- CRASH ATTENUATOR

NOTES

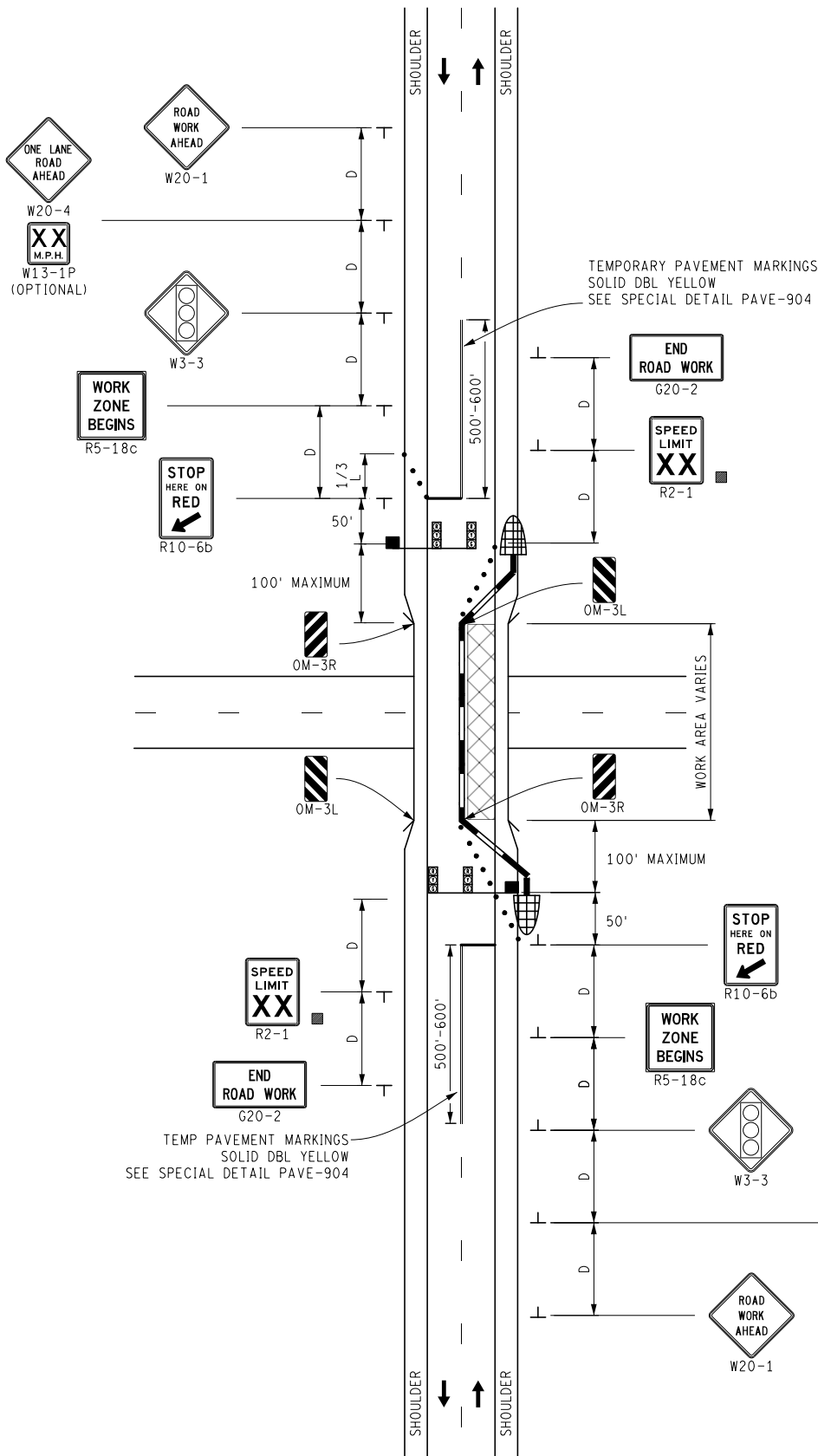
SEE TABLE 6-11 IN DESIGN MANUAL, EDGE DROP TREATMENT FOR BARRIER WALL USAGE GUIDELINES.

BARRIER WALL AND OM-3 SIGNS MAY BE REMOVED AND REPLACED WITH CHANNELIZING DEVICES IF THERE IS NO DROP OFF.

STANDARD NOTES

(SEE 102-GEN-NOTES)

GENERAL: G1, G2, G3, G5
 SIGNING: S1, S3, S4
 DEVICES: TCD1, TCD5
 MAINT & SURV MS2, MS3, MS4



NOT TO SCALE

	MAINTENANCE MAINTAINING TRAFFIC TYPICAL	DURATION: LONG-TERM STATIONARY INTERMEDIATE-TERM STATIONARY	TEMPORARY TRAFFIC SIGNAL ON A TWO-LANE, TWO-WAY ROADWAY NO SPEED REDUCTION (WITH TEMPORARY BARRIER WALL)	DATE: MAY 2021
	FILE: 4121-M-TS.dgn			NO: 4121-M-TS