






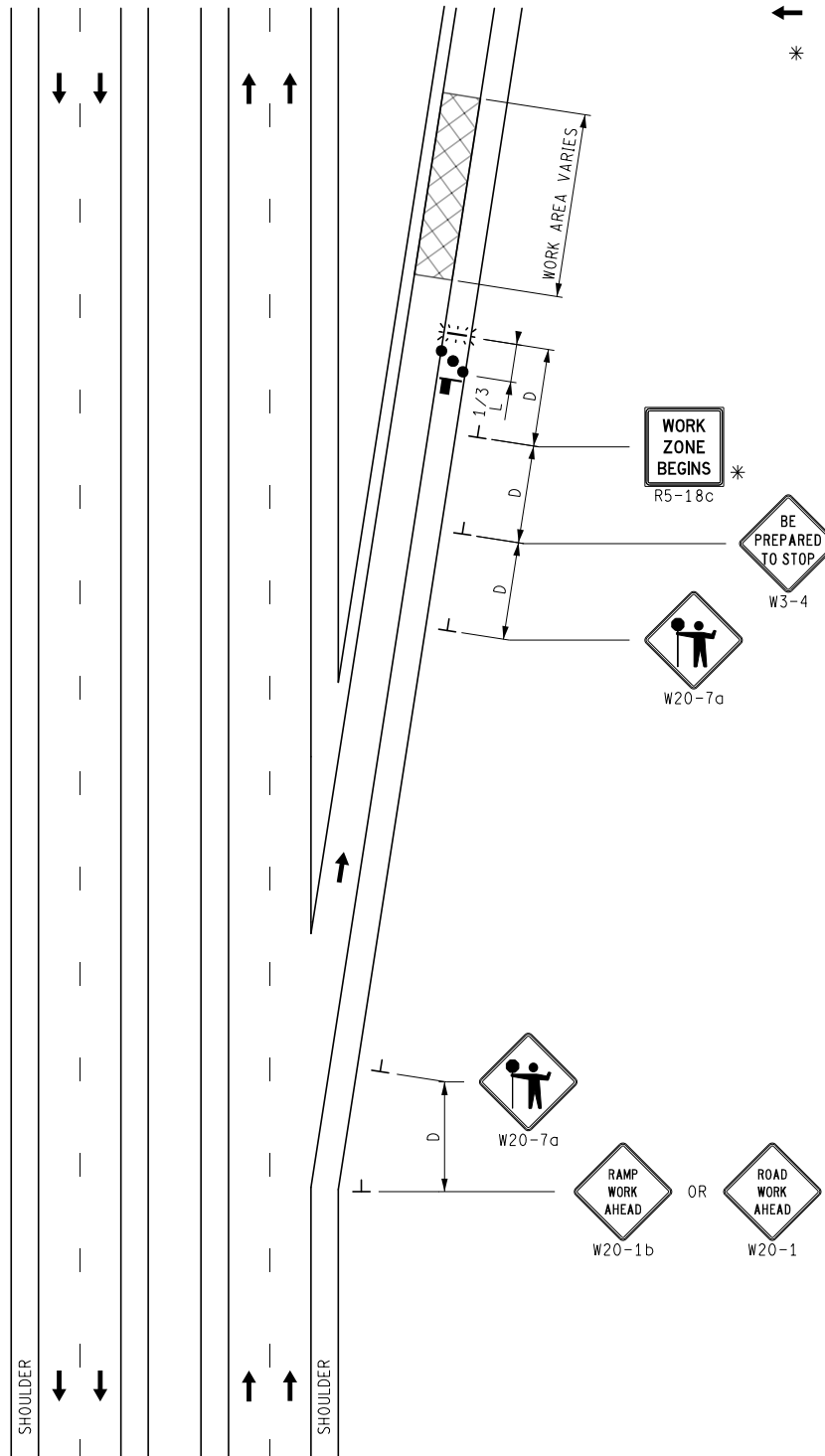
KEY

-  TRAFFIC REGULATOR
-  CHANNELIZING DEVICES
-  LIGHTED ARROW PANEL (CAUTION MODE)
-  TRAFFIC FLOW
-  \* ONLY REQUIRED FOR INTERMEDIATE-TERM STATIONARY AND LONG-TERM STATIONARY

STANDARD NOTES

(SEE 102-GEN-NOTES)

GENERAL: G1, G2, G3, G4  
 SIGNING: S1, S3, S4  
 TRAF REG: TR1, TR2  
 DEVICES: TCD1, TCD2, TCD6  
 MAINT & SURV: MS2, MS3, MS4



NOT TO SCALE

	MAINTENANCE MAINTAINING TRAFFIC TYPICAL	DURATION: LONG-TERM STATIONARY INTERMEDIATE-TERM STATIONARY SHORT-TERM STATIONARY	WORK OPERATIONS ON EXIT RAMPs	DATE: MAY 2021
				NO: 4224-M-FW-ExR-TR
FILE: 4224-M-FW-ExR-TR.dgn				SHEET: 1 OF 1