

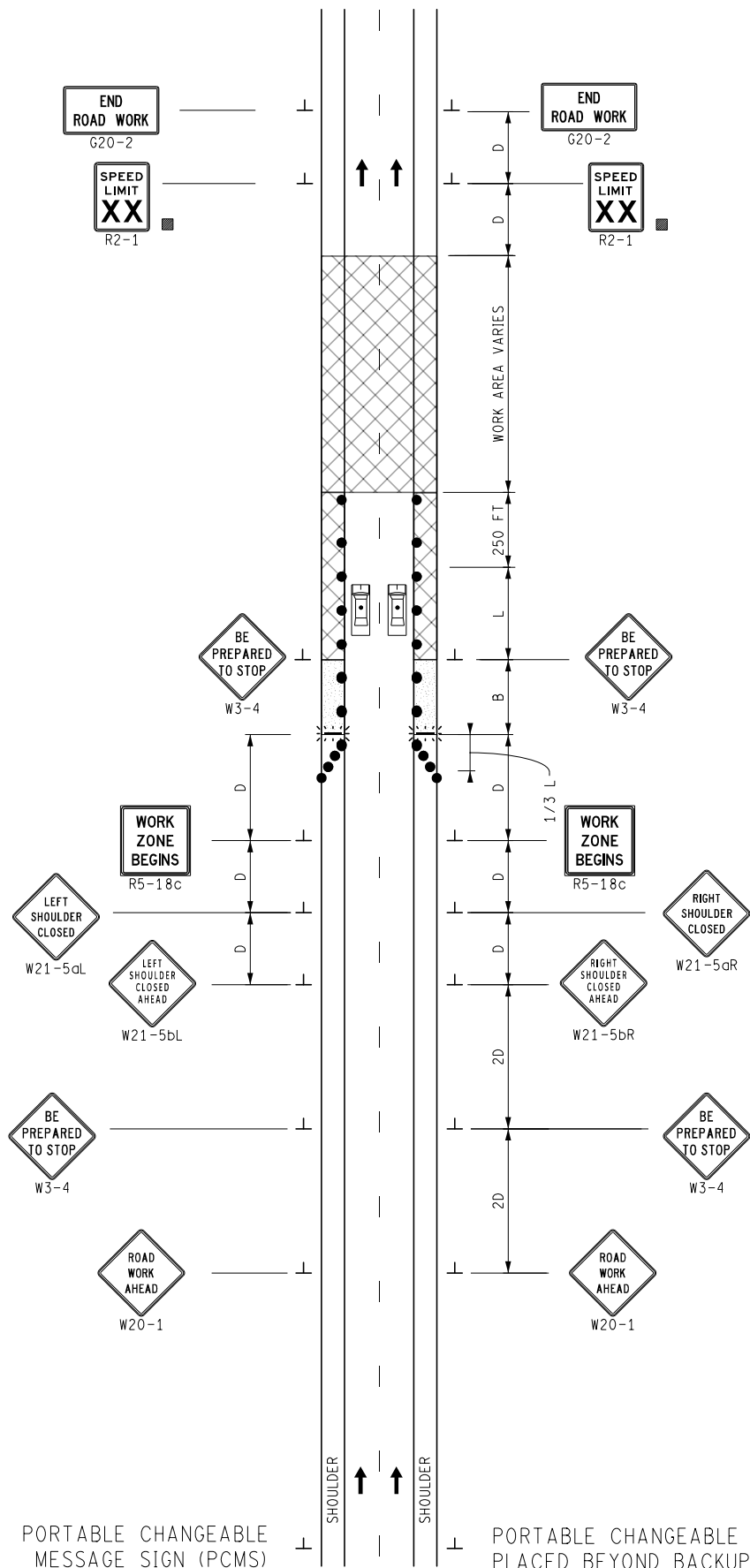
### KEY

- CHANNELIZING DEVICES
- ⚡ LIGHTED ARROW PANEL
- ← TRAFFIC FLOW
- REFLECTS EXISTING SPEED LIMIT
- PLACE SIGN AS INDICATED IN NOTE S5
- PLACE SIGN AS INDICATED IN NOTE S2
- ◇ R2-1a OPTIONAL
- 🚓 POLICE VEHICLE WITH LIGHT BAR OR CONSTRUCTION VEHICLE WITH PERMANENTLY AFFIXED ROTATING BEACON OR STROBE LIGHT

### STANDARD NOTES

(SEE 102-GEN-NOTES)

GENERAL: G1, G2, G3, G4  
 SIGNING: S1, S2, S3, S4, S5, S6  
 TRAF REG: TR1, TR2  
 DEVICES TCD1, TCD2, TCD10



PORTABLE CHANGEABLE MESSAGE SIGN (PCMS)

PORTABLE CHANGEABLE MESSAGE SIGN (PCMS) PLACED BEYOND BACKUP AND STAGGERED 1000 FT



NOT TO SCALE

MAINTAINING TRAFFIC TYPICAL

NO:

360-SP-ROLL

ROLLING ROADBLOCK  
ON A TWO LANE FREEWAY

DATE: MAY 2021

SHEET:

1 OF 1