

KEY

- CHANNELIZING DEVICES
- ← TRAFFIC FLOW

STANDARD NOTES

(SEE 102-GEN-NOTES)

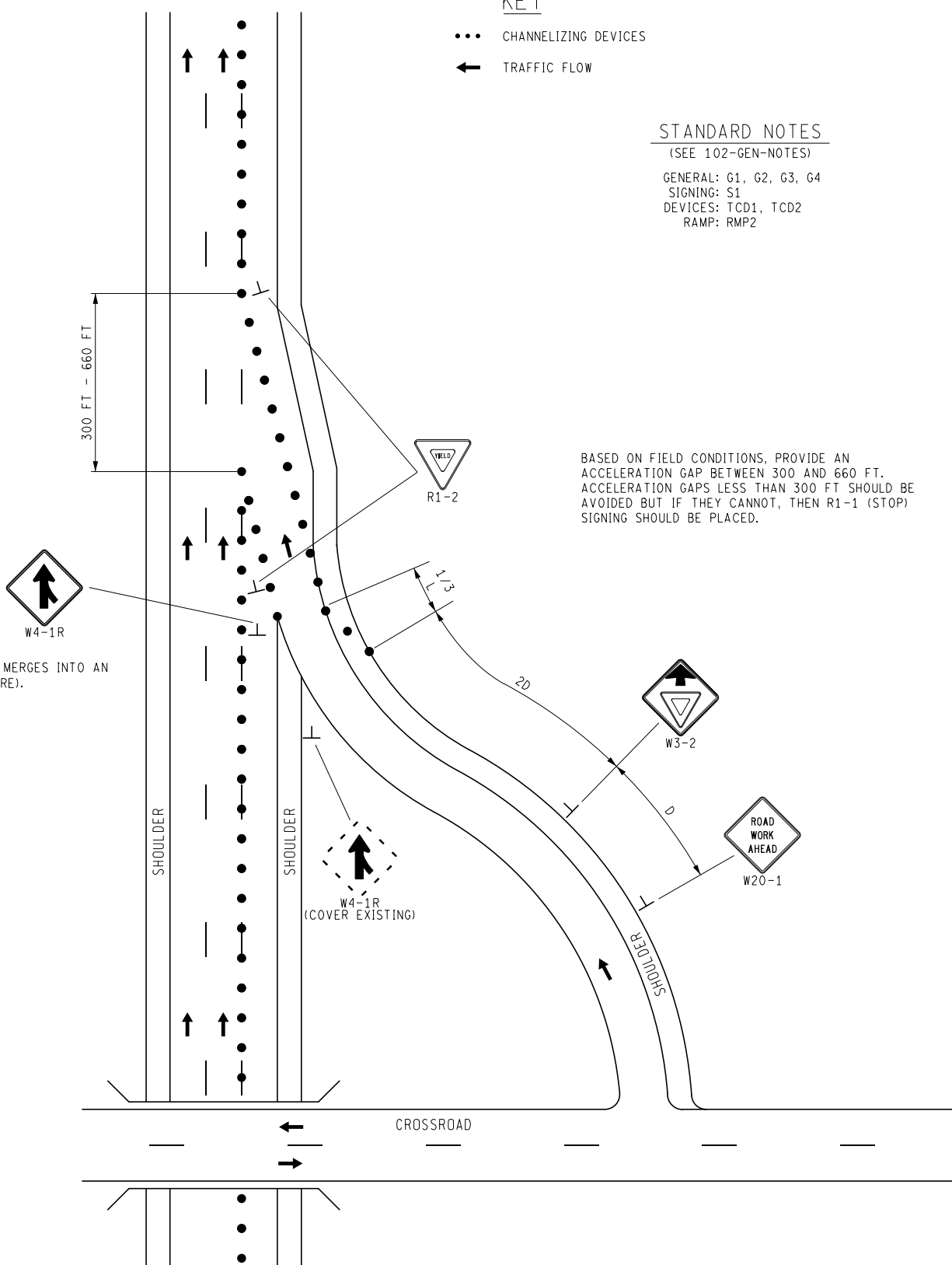
GENERAL: G1, G2, G3, G4

SIGNING: S1

DEVICES: TCD1, TCD2

RAMP: RMP2

BASED ON FIELD CONDITIONS, PROVIDE AN ACCELERATION GAP BETWEEN 300 AND 660 FT. ACCELERATION GAPS LESS THAN 300 FT SHOULD BE AVOIDED BUT IF THEY CANNOT, THEN R1-1 (STOP) SIGNING SHOULD BE PLACED.



USE W4-1 WHEN TRAFFIC MERGES INTO AN OPEN LANE (AS SHOWN HERE).



NOT TO SCALE

MAINTAINING TRAFFIC TYPICAL

NO: 222-FW-EnR-0  
-LC-YIELD

**YIELD CONDITION  
FREWAY ENTRANCE RAMP  
TREATMENT ON A FREWAY  
WITH OUTSIDE LANE CLOSURE**

DATE: MAY 2021

SHEET:

1 OF 1