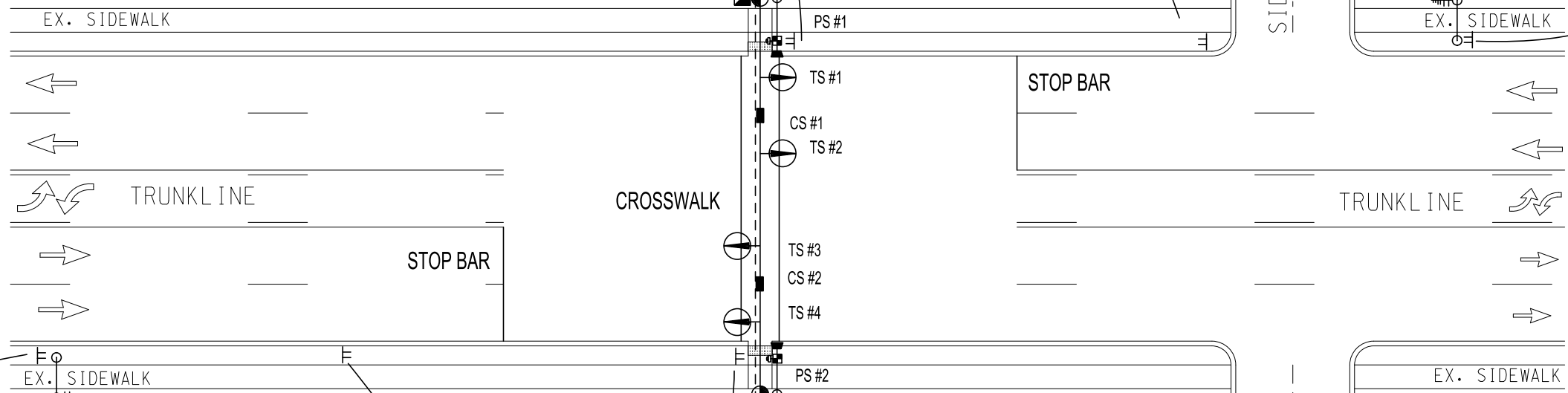


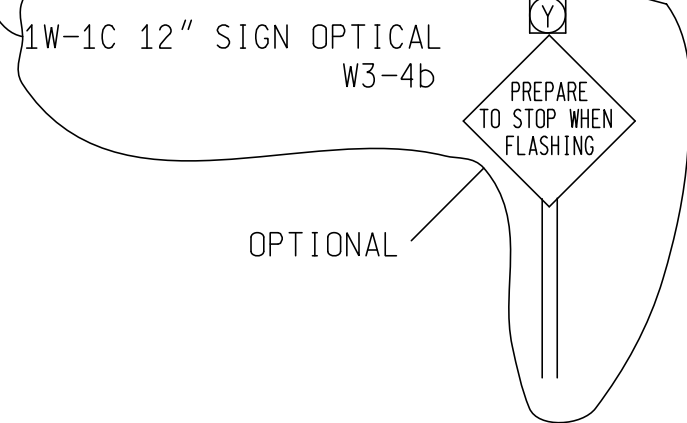
SECONDARY SERVICE
 SERVICE DISCONNECT (NEMA 4X)
 ANCHOR BASE STEEL STRAIN POLE & FDN
 WIRELESS INTERCONNECT MASTER YAGI ANTENNA
 DIGITAL TYPE POLE MTD. CONTROLLER
 HH
 1-3" DB CONDUIT
 ALUMINUM PEDESTAL & FDN
 PUSHBUTTON FOR CROSSING TRUNKLINE
 1W-2C-PA SEE DETAIL B-2 ON SIG-028-A

SECONDARY SERVICE
 SERVICE DISCONNECT
 EX. WOOD POLE
 WIRELESS INTERCONNECT REMOTE
 WITH YAGI ANTENNA
 HH
 1-3" DB CONDUIT
 1W-1C 12" SIGN OPTICAL
 W3-4b



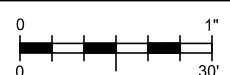
SECONDARY SERVICE
 SERVICE DISCONNECT
 EX. WOOD POLE
 WIRELESS INTERCONNECT REMOTE
 WITH YAGI ANTENNA
 HH
 1-3" DB CONDUIT

ANCHOR BASE STEEL STRAIN POLE & FDN
 HH
 1-3" DB CONDUIT
 ALUMINUM PEDESTAL & FDN
 PUSHBUTTON FOR CROSSING TRUNKLINE
 1W-2C-PA SEE DETAIL B-2 ON SIG-028-A



PUSH-BUTTONS FOR CROSSING TRUNKLINE ARE TO BE INSTALLED IN MIDDLE OF LANDING AREA (4' X 4' MIN.) WITH SLOPE OF 2% MAX.

AS-LET PLAN REVISIONS							
NO.	DATE	AUTH	DESCRIPTION	NO.	DATE	AUTH	DESCRIPTION



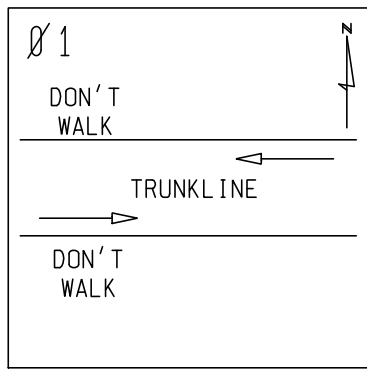
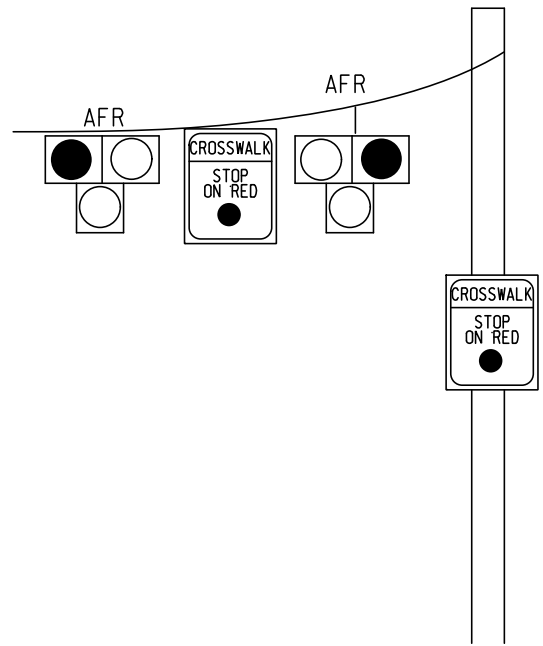
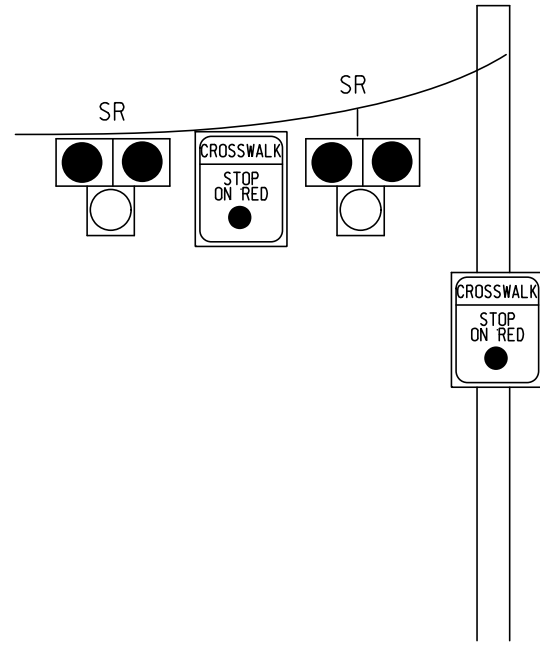
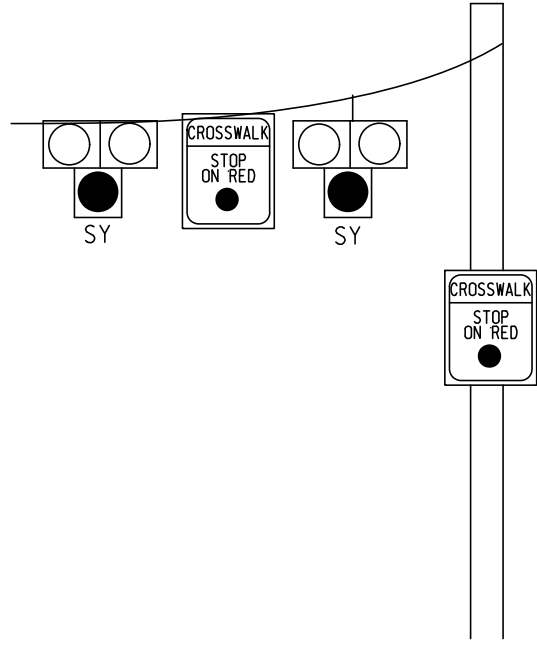
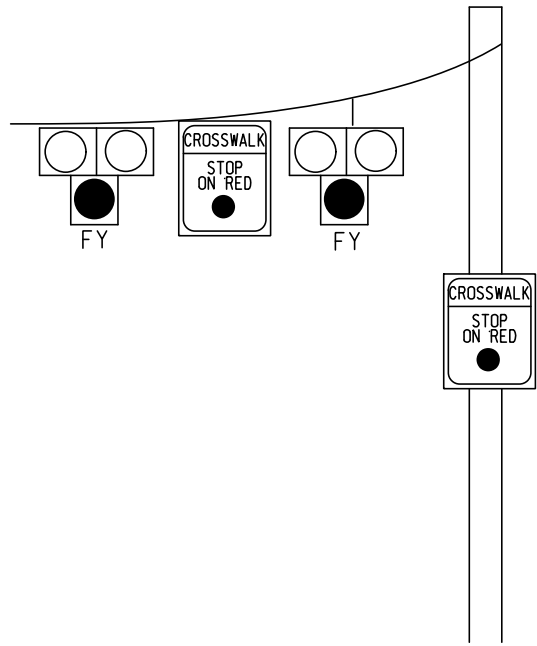
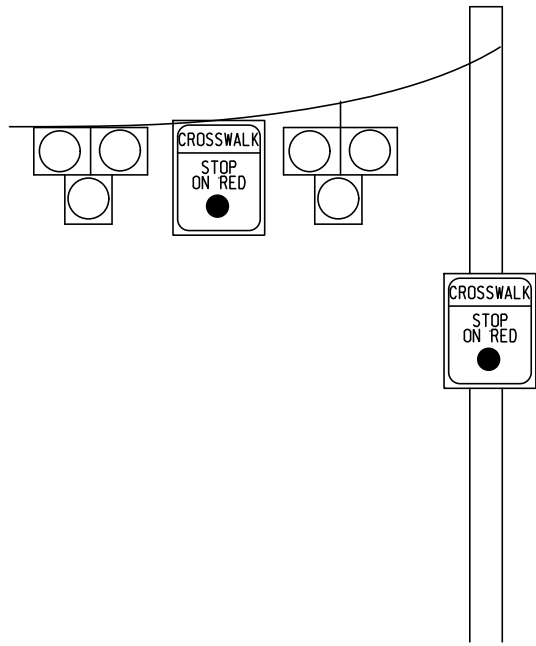
DESIGNED BY: YOUR NAME HERE
 PLAN: 12345-01-001
 FILE: 1234501001e-pr010210ct.dgn

DATE:
 DESIGN UNIT: TRAFFIC SIGNALS
 TSC:

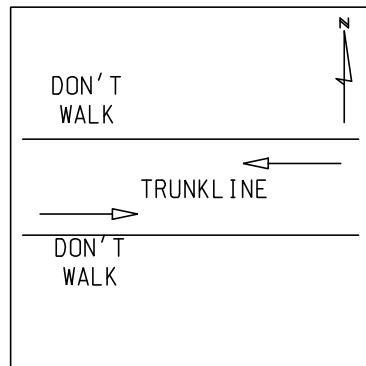
CS:
 JN:

TRAFFIC SIGNAL INSTALL SHEET
 HAWK Signal Sample Plan
 Sig-Design-030-F

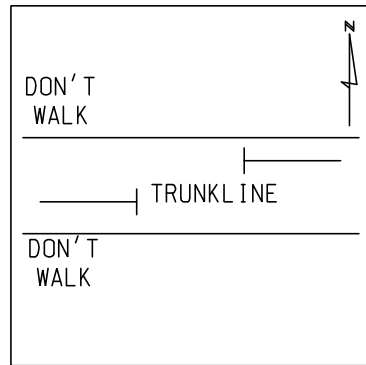
OPENINGS	18
CYCLIC	238
STEADY	0
DRAWING	SHEET
	1 of 3



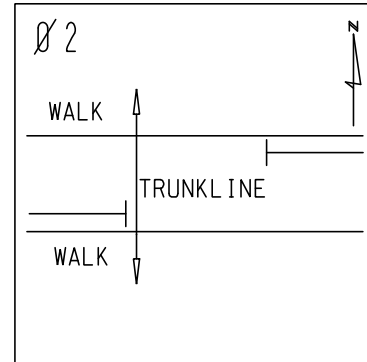
DARK DISPLAY FOR TRUNKLINE



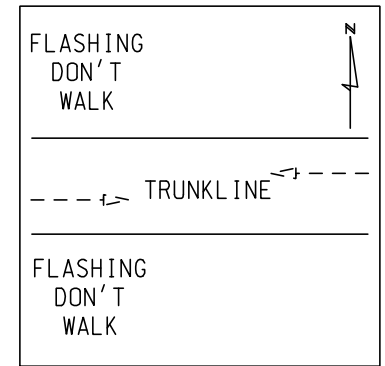
PB ACTUATION FLASHING YELLOW FOR TRUNKLINE



SOLID YELLOW FOR TRUNKLINE



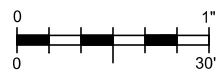
SOLID RED FOR TRUNKLINE



ALTERNATING FLASHING RED FOR TRUNKLINE

TRAFFIC SIGNAL INSTALL SHEET

AS-LET PLAN REVISIONS							
NO.	DATE	AUTH	DESCRIPTION	NO.	DATE	AUTH	DESCRIPTION



DESIGNED BY: YOUR NAME HERE
 PLAN: 12345-01-001
 FILE: 1234501001e-pr010210ct.dgn

DATE:
 DESIGN UNIT: TRAFFIC SIGNALS
 TSC:

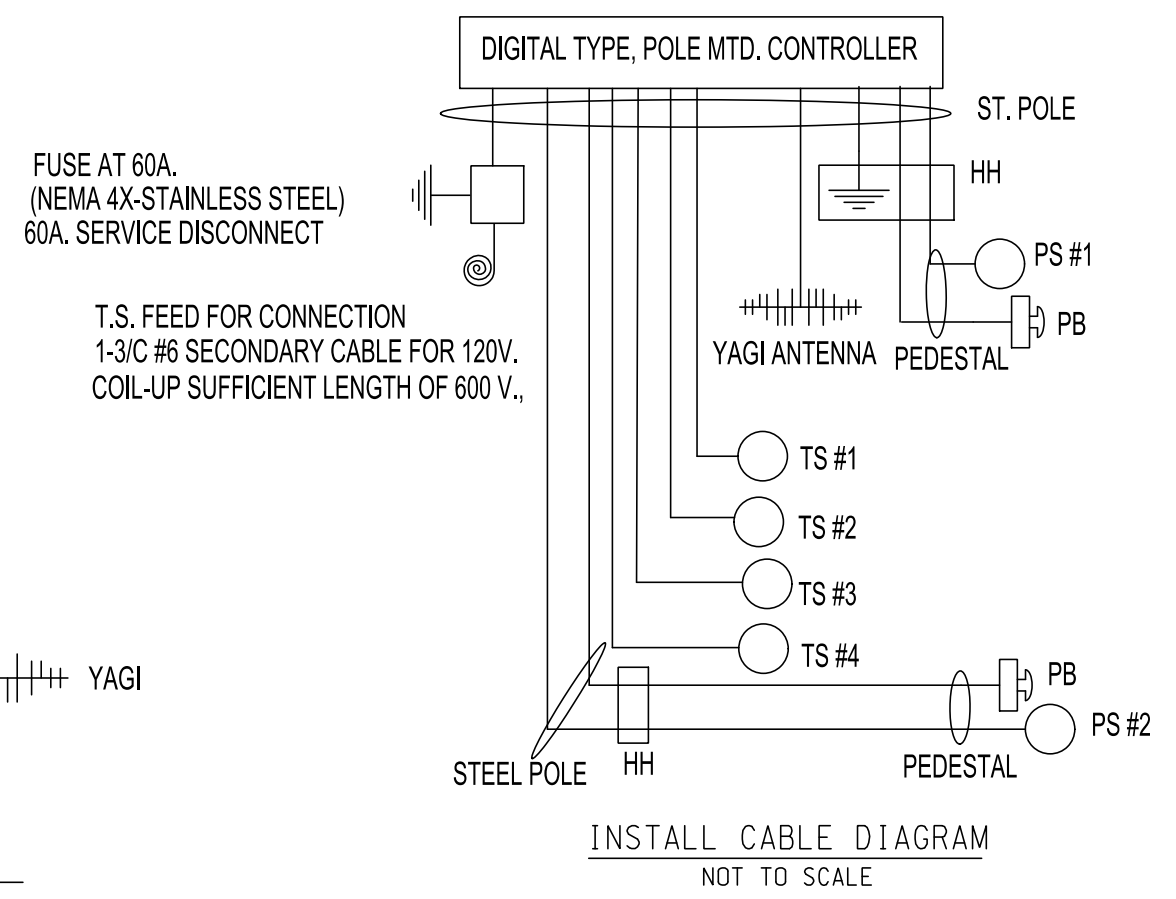
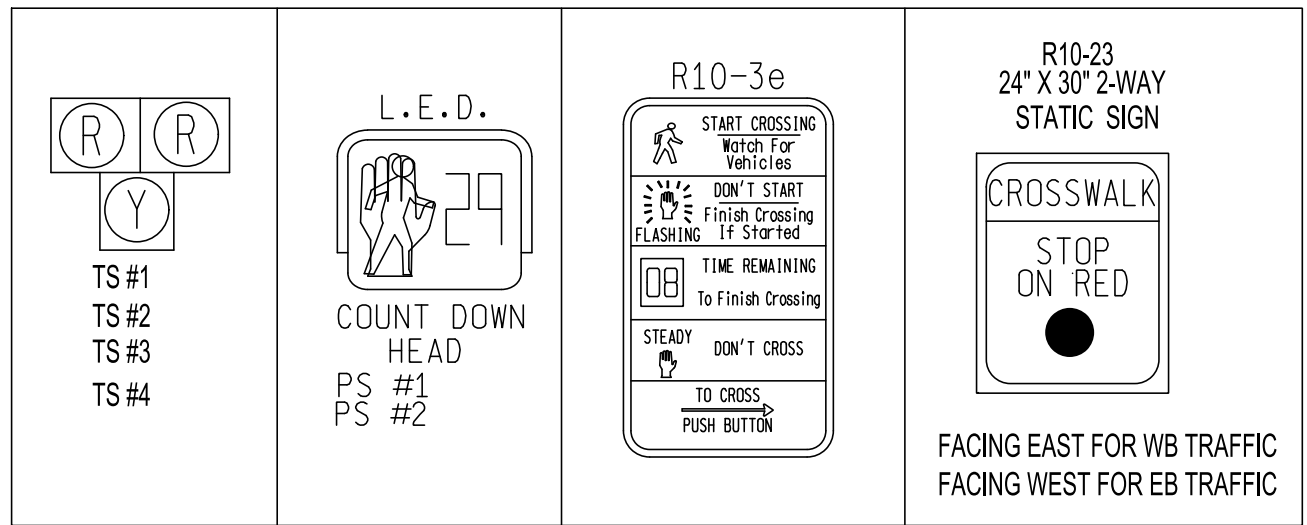
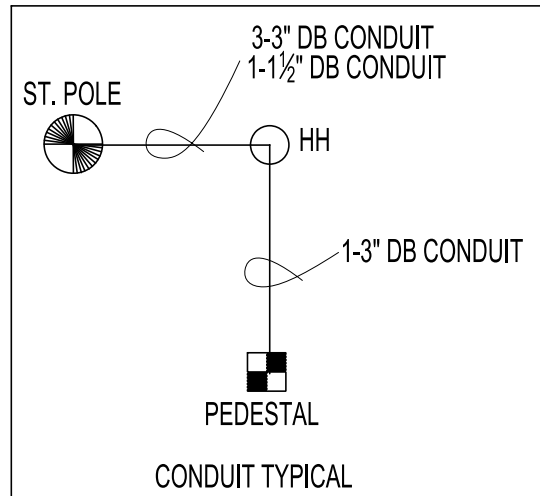
CS:
 JN:

HAWK Signal Sample Plan

Sig-Design-030-F

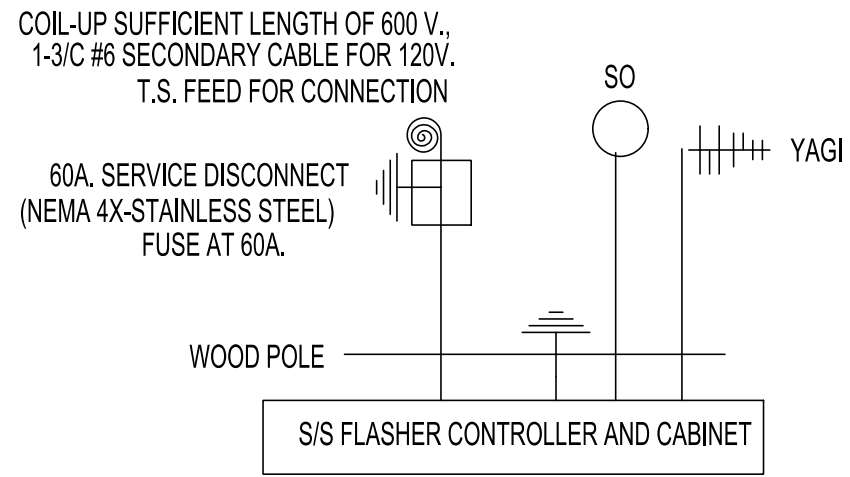
DRAWING SHEET

2 of 3

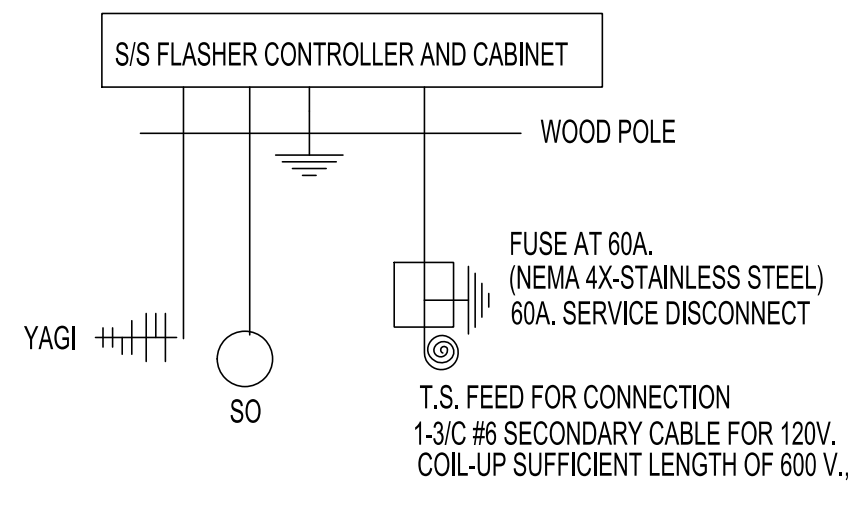


NOTE: CABLES TO BE USED UNLESS SPECIFIED OTHERWISE

1. TRAFFIC SIGNAL CABLES ARE 5/C#16 PJ.
2. PEDESTRIAN SIGNAL CABLES ARE 7/C#16 PJ.
3. PUSHBUTTON CABLES ARE 2/C#16 SHIELDED PJ.
4. YAGI ANTENNA CABLES ARE LMR 400 OR APPROVED EQUAL.

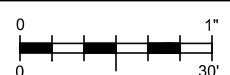


EB TRAFFIC INSTALL CABLE DIAGRAM
NOT TO SCALE



WB TRAFFIC INSTALL CABLE DIAGRAM
NOT TO SCALE

AS-LET PLAN REVISIONS							
NO.	DATE	AUTH	DESCRIPTION	NO.	DATE	AUTH	DESCRIPTION



DESIGNED BY: YOUR NAME HERE
PLAN: 12345-01-001
FILE: 1234501001e-pr010210ct.dgn

DATE:
DESIGN UNIT: TRAFFIC SIGNALS
TSC:

CS:
JN: