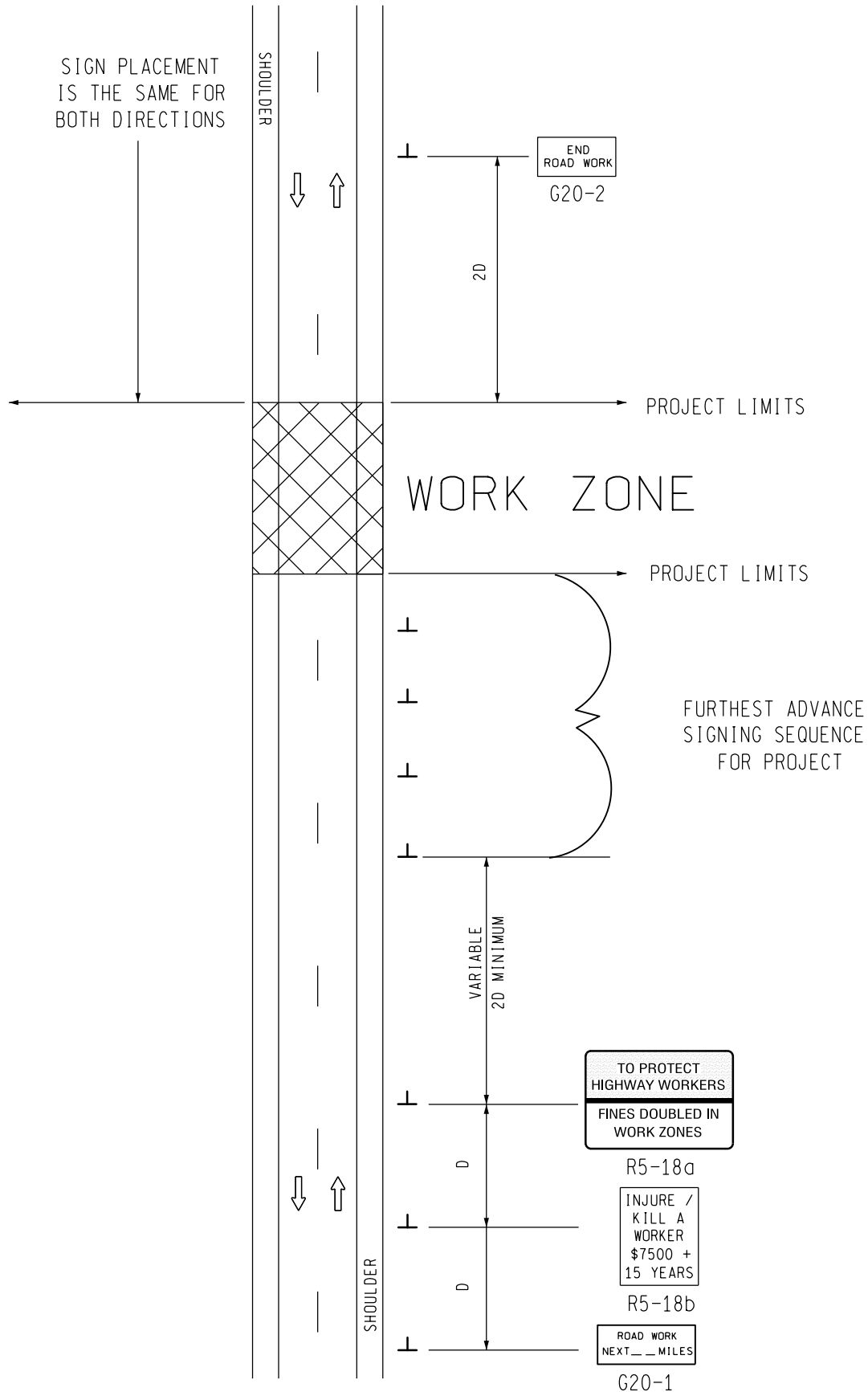


SIGN PLACEMENT IS THE SAME FOR BOTH DIRECTIONS



SIGN = 156 f+2 - TYPE B  
FOR BOTH DIRECTIONS OF TRAFFIC

**MDOT**  
Michigan Department of Transportation  
TRAFFIC AND SAFETY  
MAINTAINING TRAFFIC  
TYPICAL

TYPICAL ADVANCE SIGNING TREATMENT FOR LONG, INTERMEDIATE AND SHORT TERM STATIONARY WORK ZONE OPERATIONS OF MORE THAN TWO MILES IN LENGTH WHERE TRAFFIC CONTROL DEVICES MAY REMAIN AT END OF WORK DAY ON AN UNDIVIDED TWO-WAY ROADWAY

DRAWN BY: CON:AE:djf  
CHECKED BY: BMM:CRB

OCTOBER 2011  
PLAN DATE:

M0030a

SHEET  
1 OF 2

NOT TO SCALE

FILE: K:\-DGN-TSR-STD5-ENGLISH-MNTTRF-M0030a.dgn

REV. 10/13/2011


## NOTES

- 30. THE APPROPRIATE ADVANCE SIGNING SEQUENCE(S), (M0030a THROUGH M0080a) SHALL BE USED ON ALL PROJECTS.
- 32. THESE SIGNS SHALL BE LEFT IN PLACE AT THEIR PRESCRIBED LOCATIONS FOR THE DURATION OF THE PROJECT AND UNTIL ALL TEMPORARY TRAFFIC CONTROL HAS BEEN REMOVED.
- 33. THESE SIGNS ARE INTENDED TO BE USED OUTSIDE THE LIMITS OF ALL TEMPORARY SEQUENCE SIGNING AS IS SHOWN ON 1 OF 2. THESE SIGNS ARE NOT TO BE INTERMINGLED WITH ANY TEMPORARY SEQUENCE SIGNING.

### SIGN SIZES

G20-1	-	60" x 24"
G20-2	-	48" x 24"
R5-18a	-	96" x 60"
R5-18b	-	48" x 60"

NOT TO SCALE

 TRAFFIC AND SAFETY MAINTAINING TRAFFIC TYPICAL	TYPICAL ADVANCE SIGNING TREATMENT FOR LONG, INTERMEDIATE AND SHORT TERM STATIONARY WORK ZONE OPERATIONS OF MORE THAN TWO MILES IN LENGTH WHERE TRAFFIC CONTROL DEVICES MAY REMAIN AT END OF WORK DAY ON AN UNDIVIDED TWO-WAY ROADWAY		
	DRAWN BY: CON:AE:djf	OCTOBER 2011	SHEET
CHECKED BY: BMM:CRB	PLAN DATE:	M0030a	2 OF 2
FILE: K:\-DGN-TSR-STDS-ENGLISH-MNTTRF-M0030a.dgn		REV.	10/13/2011