

KEY

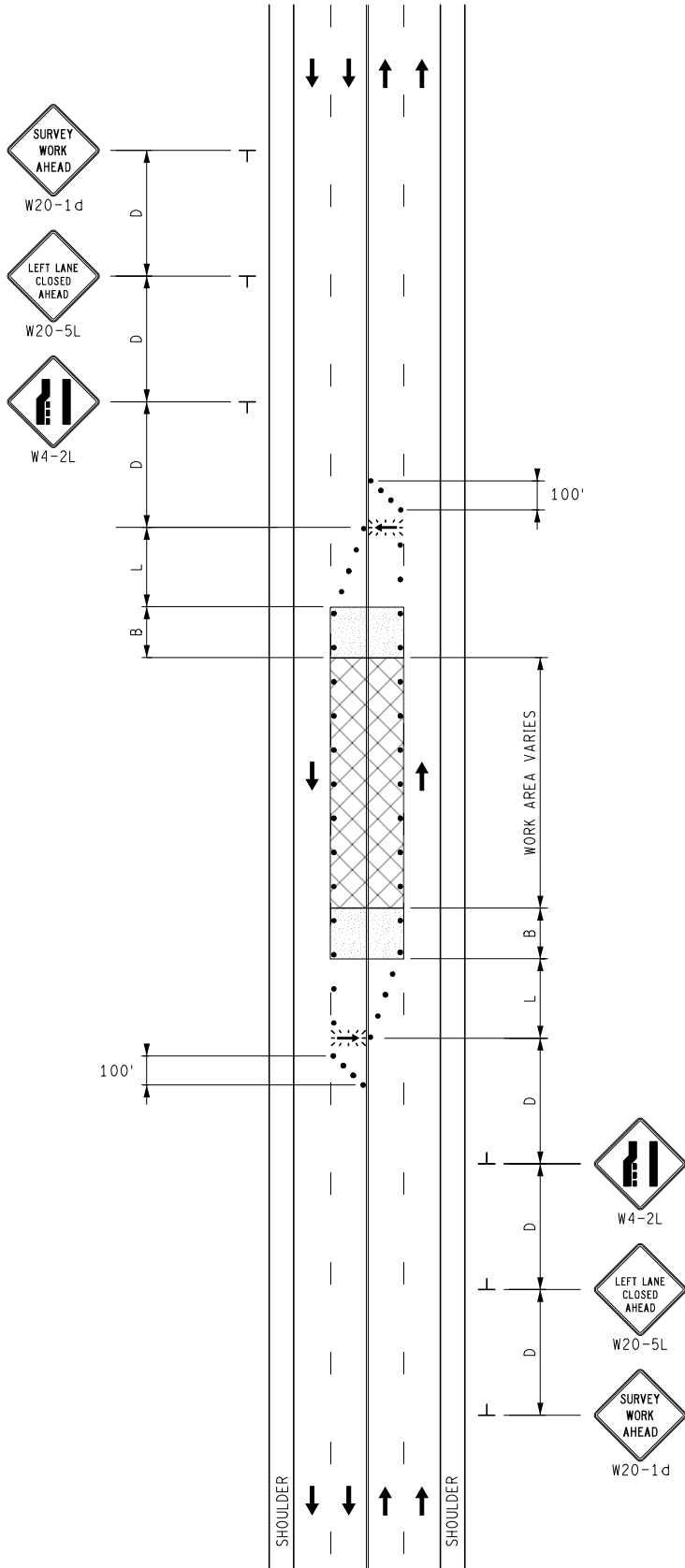
- CHANNELIZING DEVICES
- ⊘ LIGHTED ARROW PANEL
- ← TRAFFIC FLOW

NOTES

1. FOR SHORT DURATION OPERATIONS, AT LEAST ONE ADVANCE WARNING SIGN (W20-1 OR W21-6) SHALL BE USED.

STANDARD NOTES
(SEE 102-GEN-NOTES)

GENERAL: G1, G2, G3, G4
 SIGNING: S1
 DEVICES: TCD1, TCD2, TCD6
 MAINT & SURV: MS2, MS3, MS4, MS6



NOT TO SCALE

	SURVEYING MAINTAINING TRAFFIC TYPICAL	DURATION: SHORT-TERM STATIONARY SHORT DURATION	LANE CLOSURE – INSIDE TWO LANES OF AN UNDIVIDED MULTI-LANE ROADWAY	DATE: MAY 2021
				NO: 5125-S-NFW-2LC-(IN)
FILE: 5125-S-NFW-2LC-(IN).dgn				SHEET: 1 OF 1