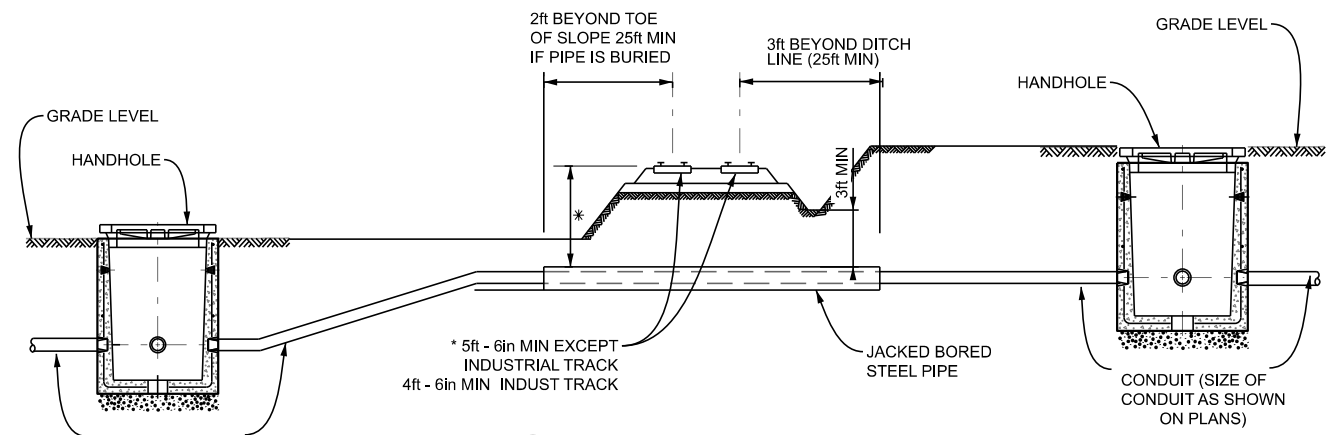
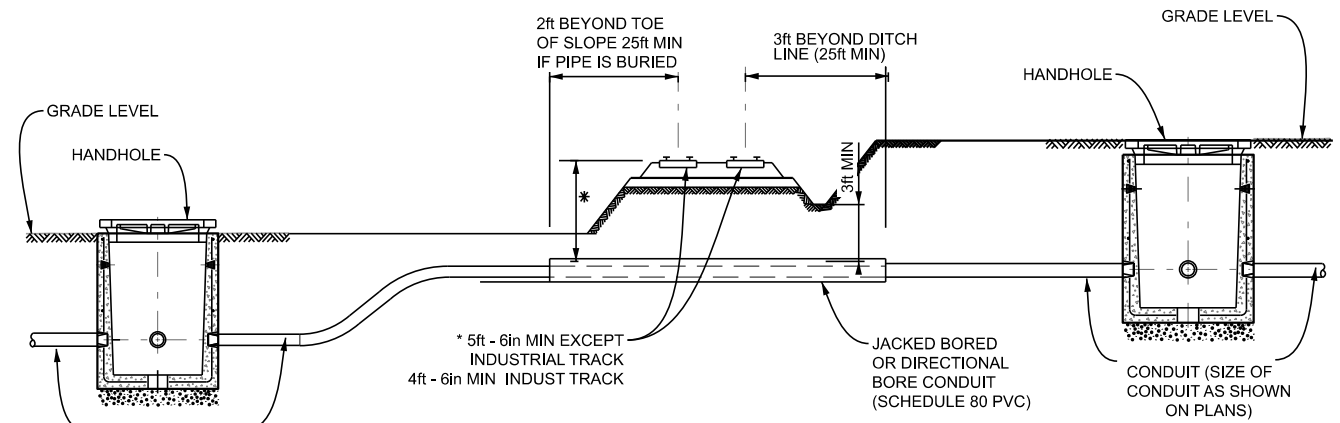


(* NOTE: JACKING-PIT IS TO BE A MINIMUM OF 25 FT FROM R.R. TRACK AND LOCATED WITHIN HIGHWAY R.O.W.

A PLAN - OVERVIEW
N.T.S.



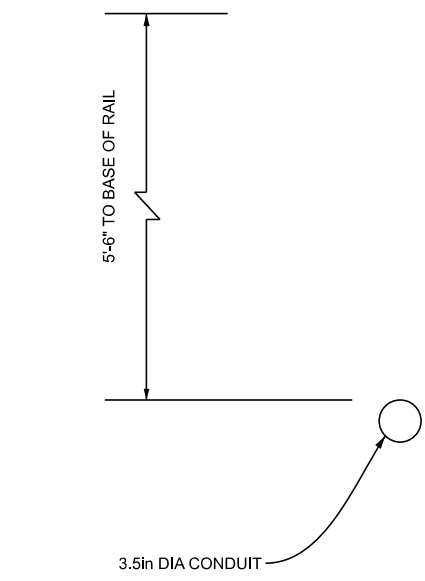
B CROSS SECTION - STEEL CONDUIT
N.T.S.



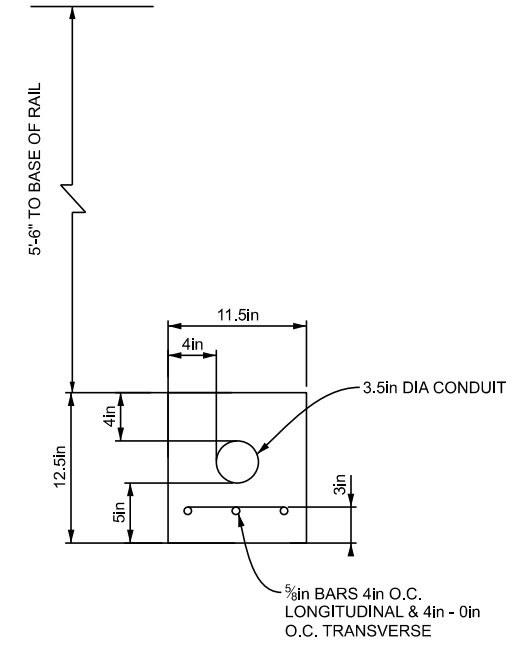
C CROSS SECTION - NON FLAMMABLE SUBSTANCES
N.T.S.
HORIZONTAL DISTANCES ARE MEASURED AT RIGHT ANGLES TO CENTERLINE OF TRACK

 DEPARTMENT DIRECTOR BRADLEY C. WIEFERICH, PE	STANDARD PLAN FOR CONDUIT UNDER RAILROAD TRACKS			SHEET 1 OF 2
	(SPECIAL DETAIL) FHWA APPROVAL	07/14/23 PLAN DATE	SIG-251-A	

- NOTES:
- 1) THE CONDUIT SHALL BE INSTALLED AT A MIN. DEPTH OF 5'-6" WITH REINFORCED BARS (IF REQUIRED PER R.R. REQUIREMENTS) AS SHOWN IN DETAIL AND AS INDICATED ON THE PLANS WITHIN THE ENTIRE CROSSING OF RAILROAD R.O.W.
 - 2) TRACK SUPPORT DEVICES SHALL BE PLACED & REMOVED TO CARRY THE RAILROAD. TRACKS OVER THE OPEN TRENCH INSTALLATION WITH THE TRENCH PROPERLY SUPPORTED WITH SHEETING & ANY OTHER SUPPORTS REQUIRED TO COMPLETE THE CONDUIT INSTALLATION WITHIN THE RAILROAD R.O.W. THE EXTRA COST OF SUCH INSTALLATION SHALL BE INCIDENTAL TO THE ENCASED CONDUIT ITEM.
 - 3) CONTRACTOR SHALL CONTACT DIVISION ENGINEER OF RAILROAD BEFORE STARTING EXCAVATION FOR CONDUIT INSTALLATION.
 - 4) CONTRACTOR SHALL REIMBURSE RAILROAD CO. FOR SERVICES PERFORMED BY RAILROAD CO. WHERE REQUIRED.
 - 5) ALL WORK SHALL BE CONDUCTED SO AS NOT TO INTERFERE WITH, INTERRUPT OR ENDANGER THE INTEGRITY OF RAIL OPERATION.



D DETAIL - (1) 3 INCH CONDUIT
N.T.S.



E DETAIL - (1) 3 INCH REINFORCED CONDUIT
N.T.S.

 DEPARTMENT DIRECTOR BRADLEY C. WIEFERICH, PE	STANDARD PLAN FOR CONDUIT UNDER RAILROAD TRACKS			SHEET 2 OF 2 SECT
	(SPECIAL DETAIL) FHWA APPROVAL	07/14/23 PLAN DATE	SIG-251-A	