

STANDARD NOTES

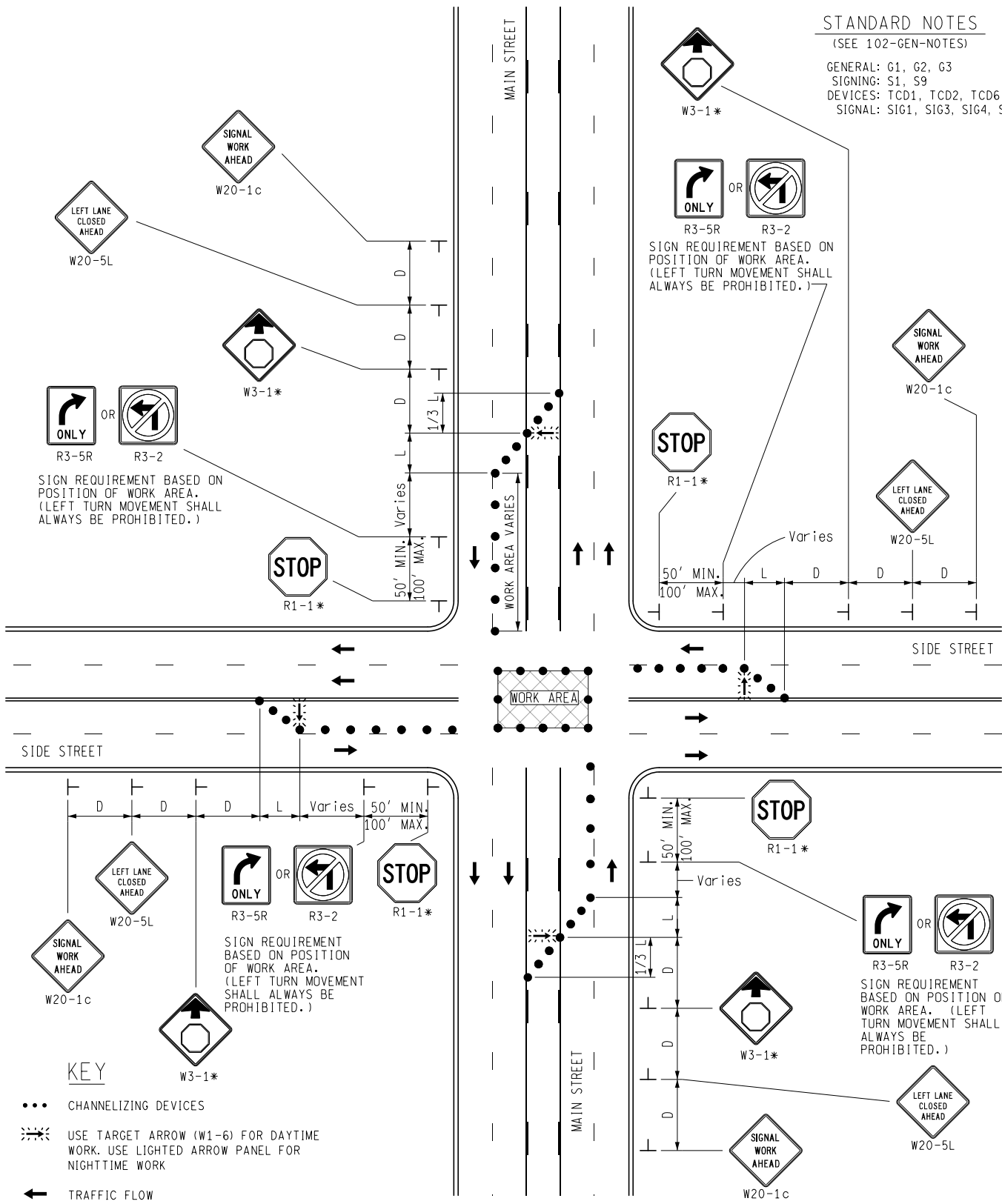
(SEE 102-GEN-NOTES)

GENERAL: G1, G2, G3

SIGNING: S1, S9

DEVICES: TCD1, TCD2, TCD6

SIGNAL: SIG1, SIG3, SIG4, SIG5



SIGN REQUIREMENT BASED ON POSITION OF WORK AREA. (LEFT TURN MOVEMENT SHALL ALWAYS BE PROHIBITED.)

SIGN REQUIREMENT BASED ON POSITION OF WORK AREA. (LEFT TURN MOVEMENT SHALL ALWAYS BE PROHIBITED.)

SIGN REQUIREMENT BASED ON POSITION OF WORK AREA. (LEFT TURN MOVEMENT SHALL ALWAYS BE PROHIBITED.)

SIGN REQUIREMENT BASED ON POSITION OF WORK AREA. (LEFT TURN MOVEMENT SHALL ALWAYS BE PROHIBITED.)

KEY

- CHANNELIZING DEVICES
- ➔ USE TARGET ARROW (W1-6) FOR DAYTIME WORK. USE LIGHTED ARROW PANEL FOR NIGHTTIME WORK
- ← TRAFFIC FLOW
- * SEE NOTE S9



NOT TO SCALE

MAINTAINING TRAFFIC TYPICAL

NO: 160-INT-LD-CLT-MID

**SIGNAL WORK AT INTERSECTION
LONGER THAN 1 HOUR
ON A 5-LANE UNDIVIDED ROADWAY**

DATE: MAY 2021

SHEET: 1 OF 1