

### KEY

- CHANNELIZING DEVICES
- ⋈ LIGHTED ARROW PANEL (CAUTION MODE)
- ← TRAFFIC FLOW
- REFLECTS EXISTING SPEED LIMIT
- \* ONLY REQUIRED FOR INTERMEDIATE-TERM STATIONARY AND LONG-TERM STATIONARY

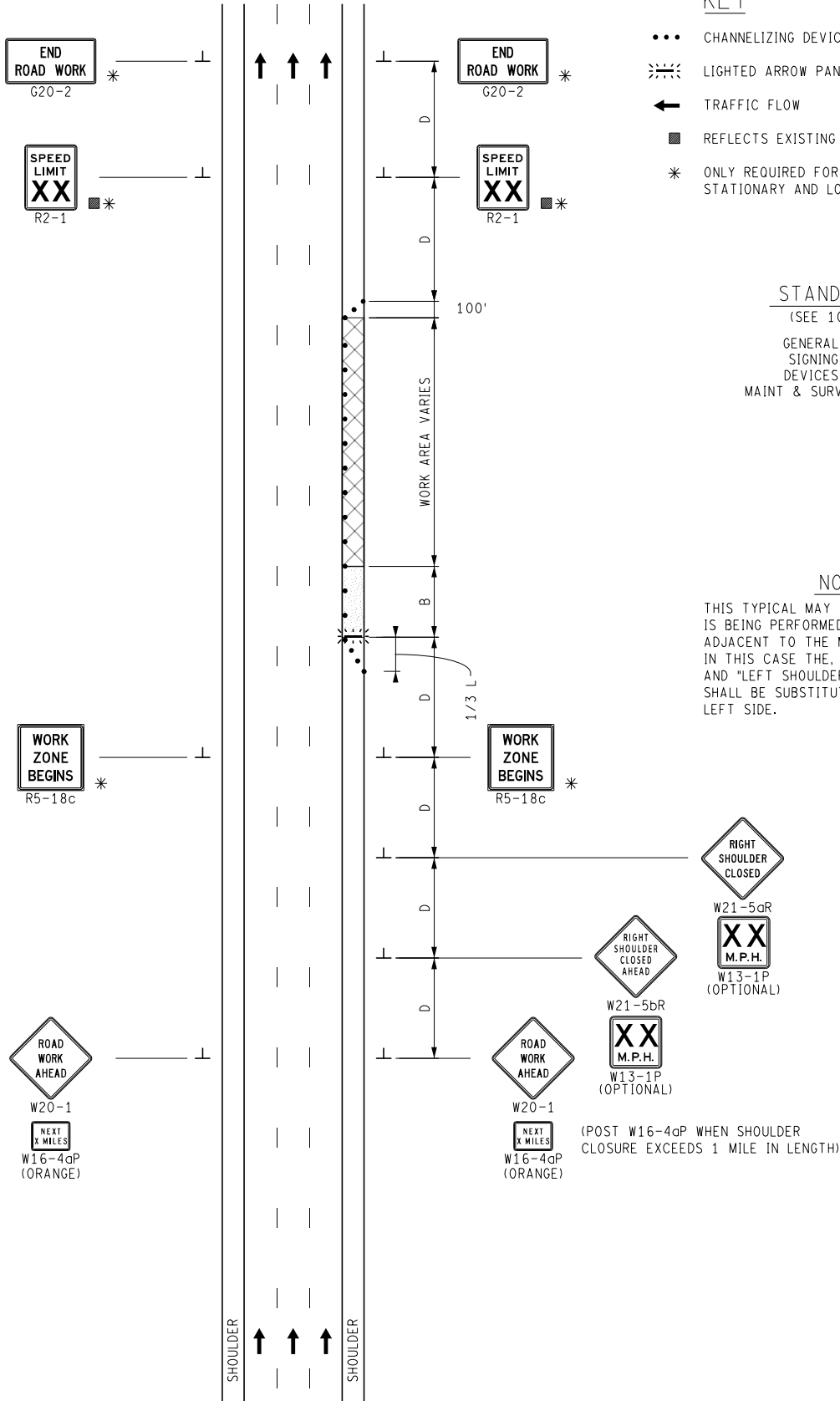
### STANDARD NOTES

(SEE 102-GEN-NOTES)

GENERAL: G1, G2, G3, G4  
 SIGNING: S1, S3  
 DEVICES: TCD1, TCD2, TCD6  
 MAINT & SURV MS2, MS3, MS4

### NOTE

THIS TYPICAL MAY ALSO BE USED WHEN WORK IS BEING PERFORMED IN THE SHOULDER ADJACENT TO THE MEDIAN OF THE ROADWAY. IN THIS CASE THE, "LEFT SHOULDER CLOSED" AND "LEFT SHOULDER CLOSED AHEAD" SIGNS SHALL BE SUBSTITUTED AND PLACED ON THE LEFT SIDE.



NOT TO SCALE

	MAINTENANCE MAINTAINING TRAFFIC TYPICAL	DURATION: LONG-TERM STATIONARY INTERMEDIATE-TERM STATIONARY SHORT-TERM STATIONARY	<b>SHOULDER CLOSURE                  ON A DIVIDED ROADWAY OR FREEWAY</b>	DATE: MAY 2021
				NO: 4200-M-FW-SHL
				SHEET: 1 OF 1

FILE: 4200-M-FW-SHL.dgn