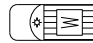


KEY

••• CHANNELIZING DEVICES

← TRAFFIC FLOW

 WORK VEHICLE

NOTES

1. TYPICAL MAY ONLY BE USED ON LOW VOLUME ROADWAYS WITH POSTED SPEED LIMIT OF 55 MPH OR LESS AND SUFFICIENT LANE AND SHOULDER WIDTH TO ALLOW 10 FT TRAVEL LANES ON EACH SIDE OF WORK SPACE.

STANDARD NOTES

(SEE 102-GEN-NOTES)

GENERAL: G1, G2, G3, G4

SIGNING: S1

DEVICES: TCD1, TCD2, TCD6

MAINT & SURV: MS2, MS3, MS4, MS6

(OMIT WHEN SPEED LIMIT IS BELOW 55 MPH)

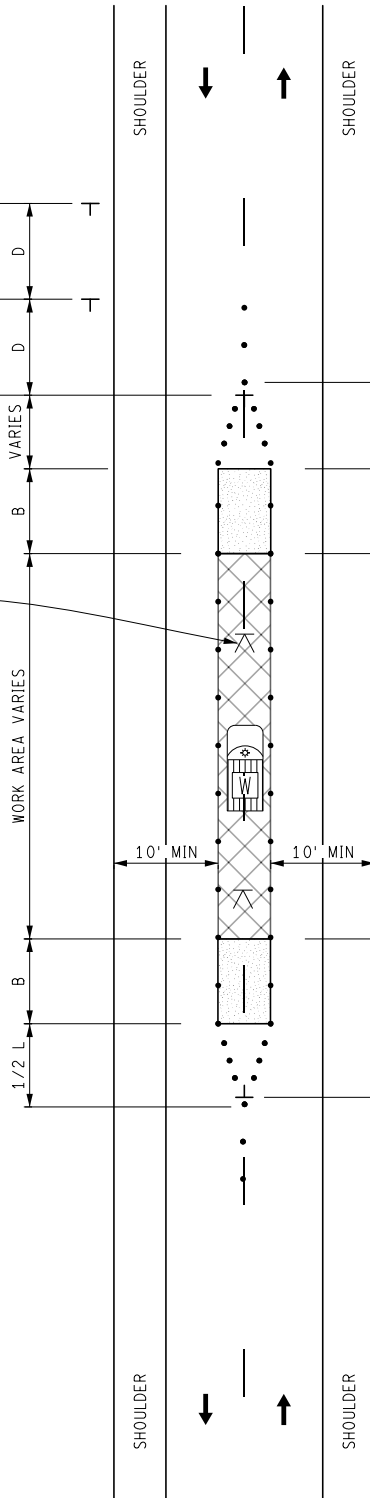


W20-1d



R4-7

INSTRUMENT (TYP)



10' MIN TO OUTSIDE EDGE OF PAVED SHOULDER (TYP)



R4-7




R2-1a



W20-1d

NOT TO SCALE

	SURVEYING MAINTAINING TRAFFIC TYPICAL	DURATION: SHORT-TERM STATIONARY	CLOSURE OF THE CENTER OF A TWO-LANE, TWO-WAY ROADWAY WITH LOW TRAFFIC VOLUMES	DATE: MAY 2021
				NO: 5182B-S-NFW-MID
FILE: 5182B-S-NFW-MID.dgn				SHEET: 1 OF 1