

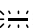


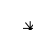

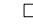


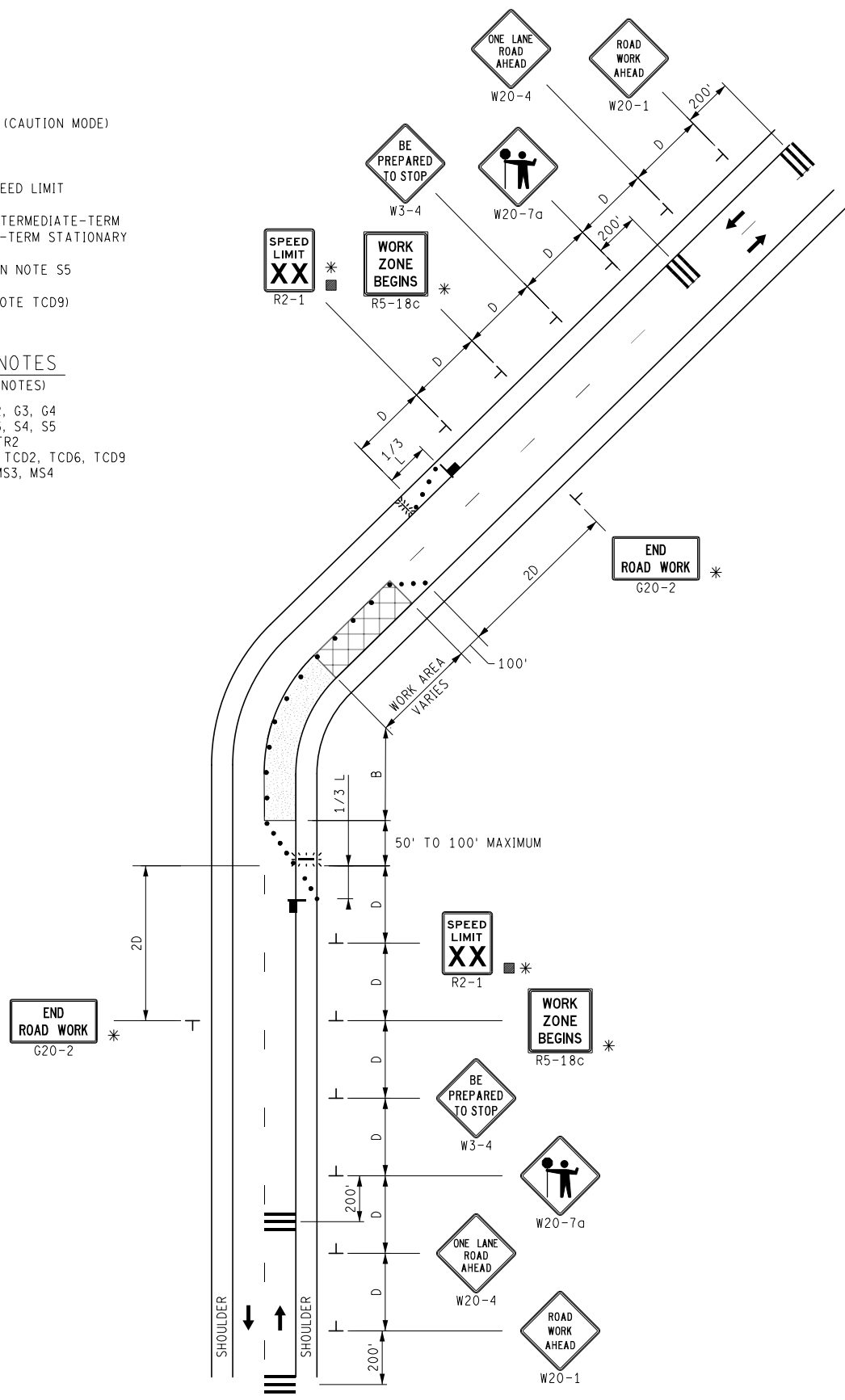
# KEY

-  TRAFFIC REGULATOR
-  CHANNELIZING DEVICES
-  LIGHTED ARROW PANEL (CAUTION MODE)
-  TRAFFIC FLOW
-  REFLECTS EXISTING SPEED LIMIT
-  \* ONLY REQUIRED FOR INTERMEDIATE-TERM STATIONARY AND LONG-TERM STATIONARY
-  □ PLACE AS INDICATED IN NOTE S5
-  RUMBLE STRIPS (SEE NOTE TCD9)

## STANDARD NOTES

(SEE 102-GEN-NOTES)

- GENERAL: G1, G2, G3, G4
- SIGNING: S1, S3, S4, S5
- TRAF REG: TR1, TR2
- DEVICES: TCD1, TCD2, TCD6, TCD9
- MAINT & SURV: MS2, MS3, MS4



NOT TO SCALE

	MAINTENANCE MAINTAINING TRAFFIC TYPICAL	DURATION: LONG-TERM STATIONARY INTERMEDIATE-TERM STATIONARY SHORT-TERM STATIONARY	<b>LANE CLOSURE</b> <b>FOR A TWO-LANE, TWO-WAY ROADWAY</b> <b>UTILIZING TRAFFIC REGULATORS,</b> <b>RUMBLE STRIPS, AND NO SPEED REDUCTION</b>	DATE: JUNE 2021
	FILE: 4111A-M-TR-NFW-2L-RUM.dgn			