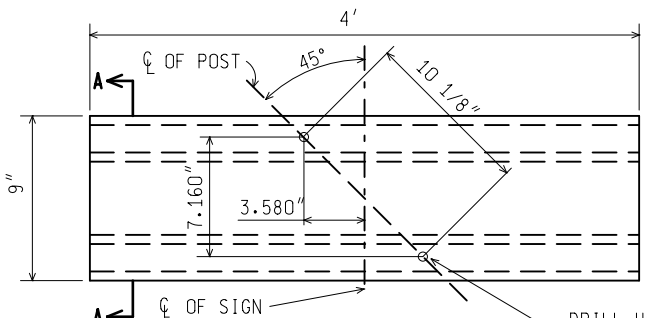


**COLORS**  
 LEGEND IS BLACK (NON-REFLECTORIZED)  
 BACKGROUND IS WHITE (REFLECTORIZED)

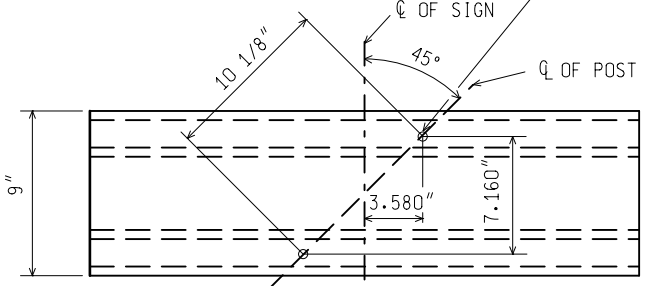
**R15-1**  
 WHITE HIGH INTENSITY (TYPE IX)  
 REFLECTORIZED BACKGROUND FULL FRONT  
 SIGN FACE, AND ONE 6" X 48" WHITE  
 (TYPE IX) REFLECTORIZED STRIP  
 CENTERED ON BACKSIDE OF EACH BLADE

**R15-2**  
 WHITE HIGH INTENSITY (TYPE IX)  
 REFLECTORIZED BACKGROUND FRONT  
 FACE ONLY

DRILL 7/16" DIA. HOLES IN R15-2 SIGNPLATE  
 R15-2 SIGN SHALL BE FABRICATED OF ALUMINUM SHEET

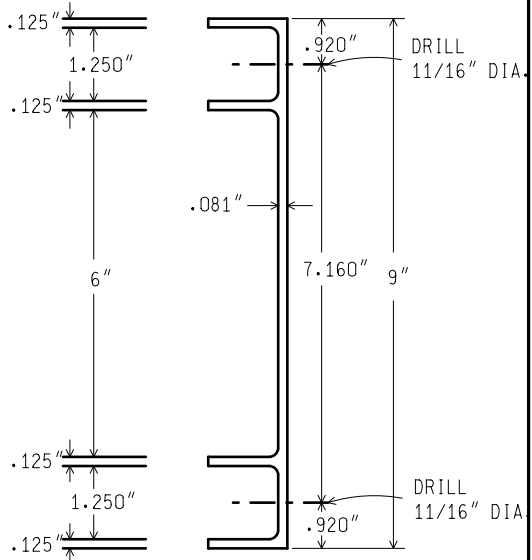


**RAILROAD BLADE** DRILL HOLES  
 11/16" DIA.



**CROSSING BLADE**

**EXTRUDED ALUMINUM BLADES**



**SECTION A-A**



PREPARED BY  
 DESIGN DIVISION  
 DRAWN BY: DHD  
 CHECKED BY: AJU

DEPARTMENT DIRECTOR  
 Kirk T. Steudle

APPROVED BY: Randy U. Penttil  
 DIRECTOR, BUREAU OF FIELD SERVICES

APPROVED BY: Neil A. Van Paul  
 DIRECTOR, BUREAU OF HIGHWAY DEVELOPMENT

MICHIGAN DEPARTMENT OF TRANSPORTATION  
 BUREAU OF HIGHWAY DEVELOPMENT STANDARD PLAN FOR

**RAILROAD CROSSING  
 SIGN**

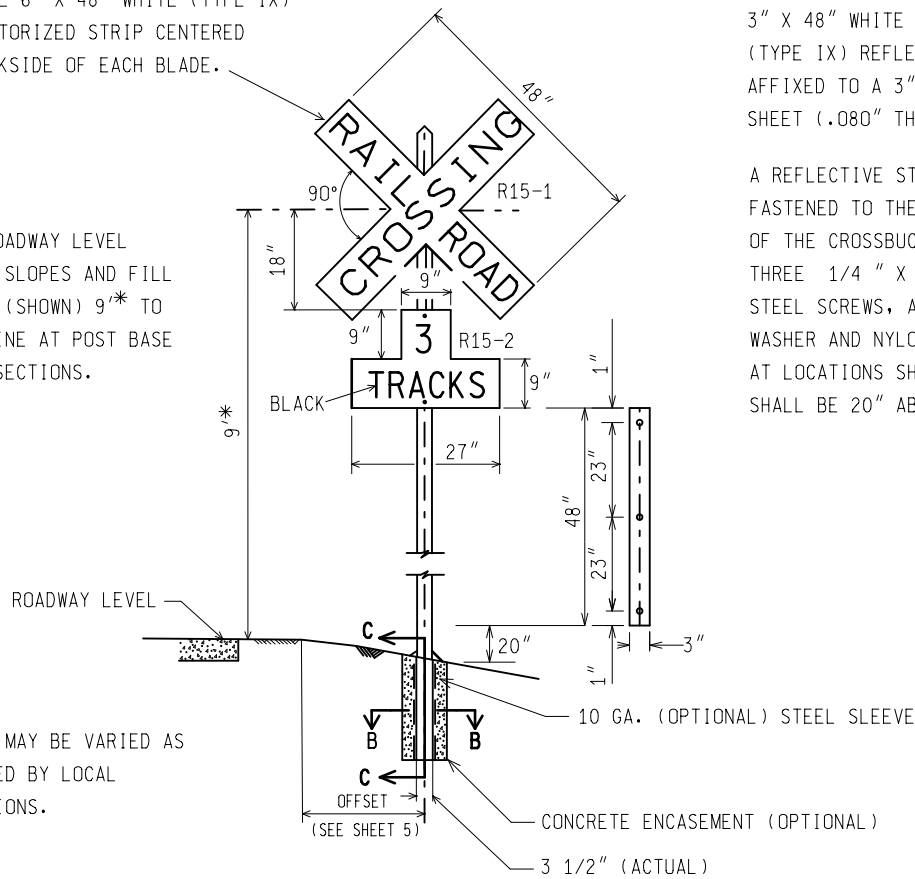
|                               |                       |            |                 |
|-------------------------------|-----------------------|------------|-----------------|
| 08/08/11<br>F.H.W.A. APPROVAL | 07/20/11<br>PLAN DATE | SIGN-130-B | SHEET<br>1 OF 5 |
|-------------------------------|-----------------------|------------|-----------------|

WHITE HIGH INTENSITY (TYPE IX)  
REFLECTORIZED BACKGROUND FULL FRONT FACE,  
AND ONE-6" X 48" WHITE (TYPE IX)  
REFLECTORIZED STRIP CENTERED  
ON BACKSIDE OF EACH BLADE.

3" X 48" WHITE HIGH INTENSITY  
(TYPE IX) REFLECTORIZED SHEETING  
AFFIXED TO A 3" X 48" ALUMINUM  
SHEET (.080" THICK).

9'\* TO ROADWAY LEVEL  
FOR FLAT SLOPES AND FILL  
SECTIONS (SHOWN) 9'\* TO  
GROUND LINE AT POST BASE  
FOR CUT SECTIONS.

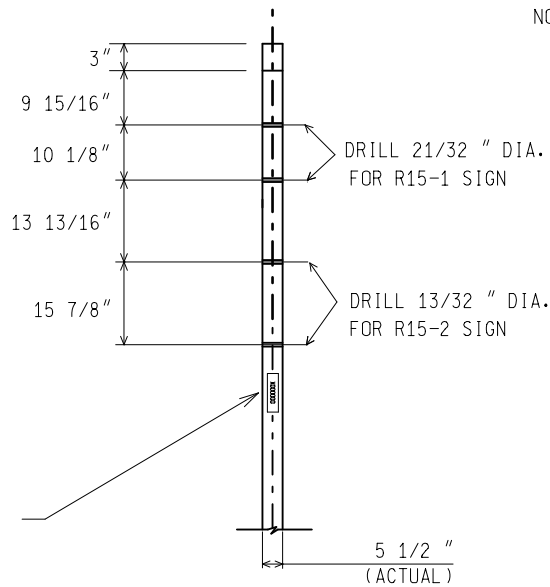
\* HEIGHT MAY BE VARIED AS  
REQUIRED BY LOCAL  
CONDITIONS.



### REFLECTIVE STRIP FRONT VIEW

NOTE: SEE SHEET 4 FOR WOOD POST  
DIRECT EMBEDMENT OPTION.

4" X 9" NATIONAL INVENTORY  
NUMBER TAG (SALVAGED OR  
FURNISHED BY THE RAILROAD)  
SHALL BE INSTALLED USING  
EITHER NAILS OR LONG STAPLES.  
THE INSTALLATION SHALL BE ON  
SIDE OF POST FACING THE  
ROADWAY JUST ABOVE EYE LEVEL.



### REFLECTIVE STRIP SIDE VIEW

BOLT HOLE LOCATIONS ARE SHOWN

NOT TO SCALE

MICHIGAN DEPARTMENT OF TRANSPORTATION  
BUREAU OF HIGHWAY DEVELOPMENT STANDARD PLAN

08/08/11  
F.H.W.A. APPROVAL

07/20/11  
PLAN DATE

SIGN-130-B

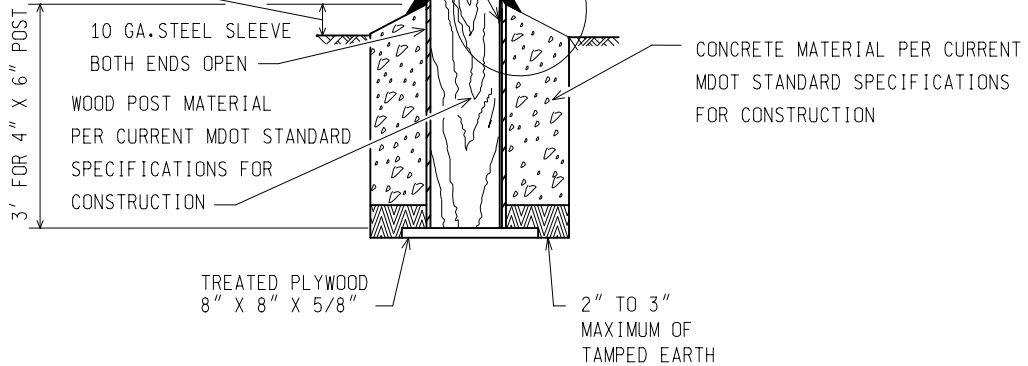
SHEET  
2 OF 5

NOTE: THE ORIGINAL SIGNED COPY IS KEPT ON FILE AT THE MICHIGAN DEPARTMENT OF TRANSPORTATION.

TAPERED HARD WOOD WEDGES (HARDWOOD WEDGES ARE OAK, MAPLE OR OTHER APPROVED DENSE HARDWOODS) TO HOLD POST IN A STABLE POSITION AFTER CONCRETE HAS SET. USE 2" OR 3" WEDGES TO COVER APPROXIMATELY 75% OF POST WIDTH ON TWO ADJACENT SIDES

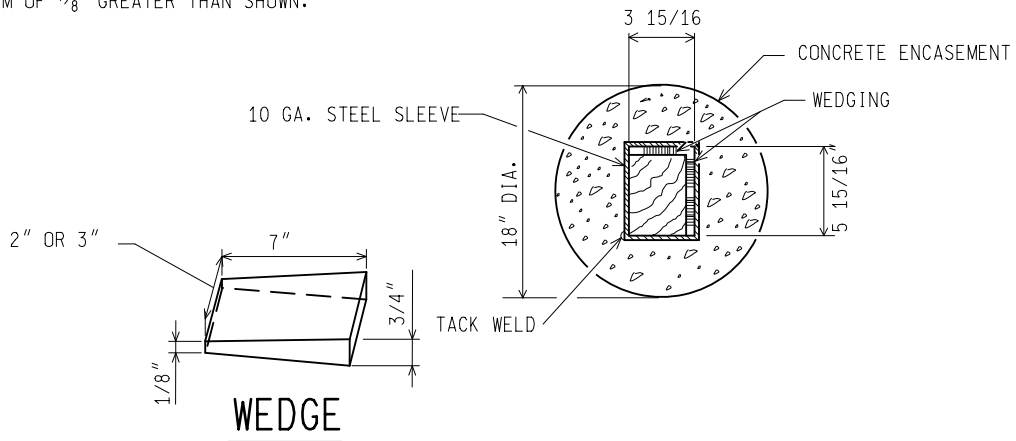
MINIMUM 1 1/2" FILLET OF BITUMINOUS WATER PROOFING MATERIAL

MAXIMUM OF 2" STEEL & CONCRETE PROJECTION ABOVE GROUND.  
NOTE: ON SLOPES, MEASURE FROM LOWEST POINT.



**SECTION C - C**

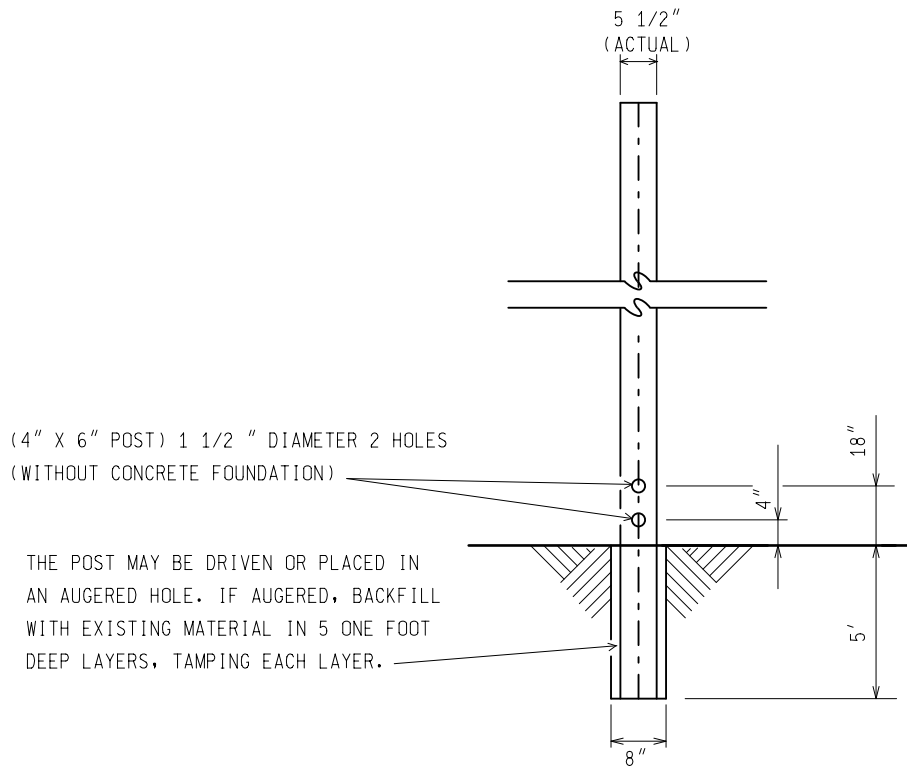
NOTE: INSIDE DIMENSIONS OF SLEEVE MAY BE A MAXIMUM OF 1/8" GREATER THAN SHOWN.



**SECTION B - B**

**WOOD POST CONCRETE FOUNDATION OPTION**

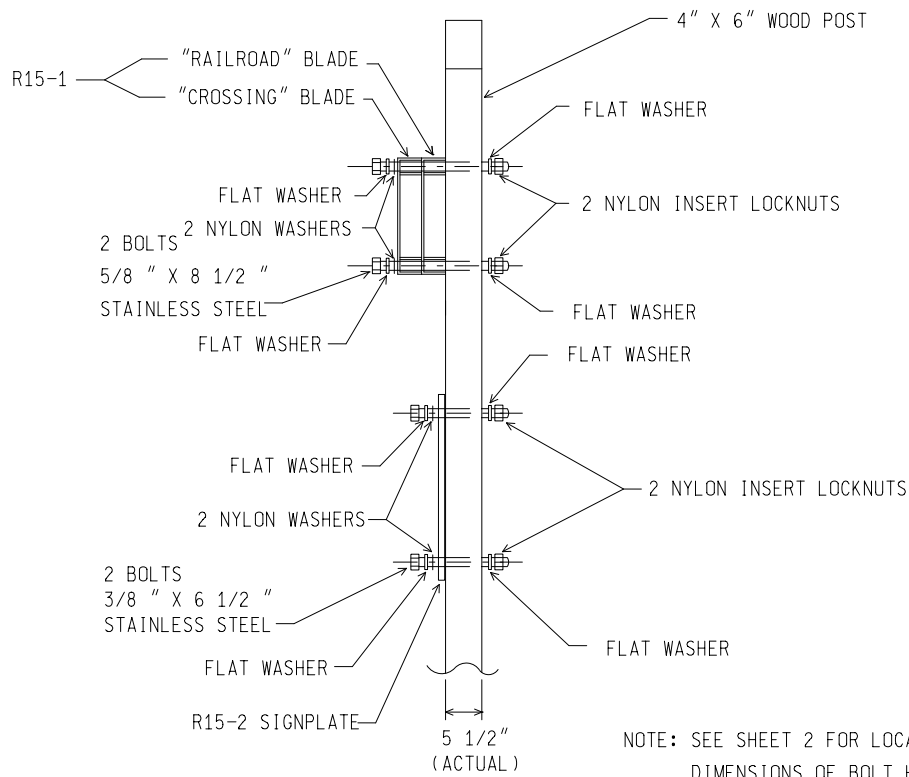
NOT TO SCALE



(4" X 6" POST) 1 1/2 " DIAMETER 2 HOLES  
(WITHOUT CONCRETE FOUNDATION)

THE POST MAY BE DRIVEN OR PLACED IN  
AN AUGERED HOLE. IF AUGERED, BACKFILL  
WITH EXISTING MATERIAL IN 5 ONE FOOT  
DEEP LAYERS, TAMPING EACH LAYER.

### SIDE VIEW WOOD POST DIRECT EMBEDMENT OPTION



NOTE: SEE SHEET 2 FOR LOCATIONS AND  
DIMENSIONS OF BOLT HOLES IN POST.

### FASTENERS

NOT TO SCALE

MICHIGAN DEPARTMENT OF TRANSPORTATION  
BUREAU OF HIGHWAY DEVELOPMENT STANDARD PLAN

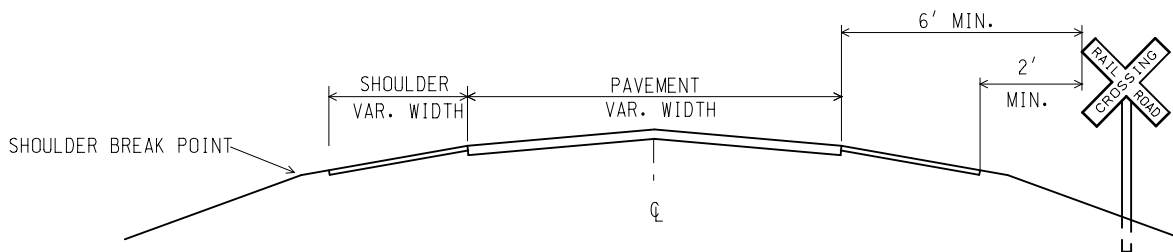
08/08/11  
F.H.W.A. APPROVAL

07/20/11  
PLAN DATE

SIGN-130-B

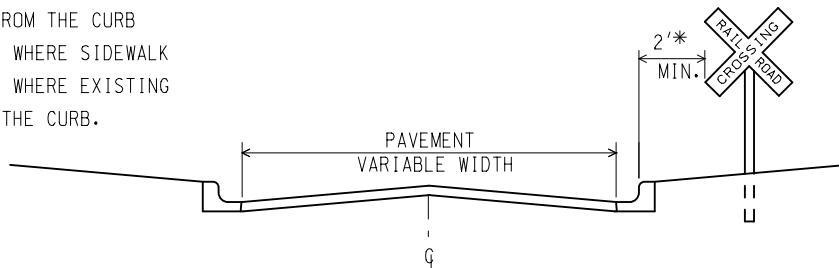
SHEET  
4 OF 5

NOTE: THE ORIGINAL SIGNED COPY IS KEPT ON FILE AT THE MICHIGAN DEPARTMENT OF TRANSPORTATION.

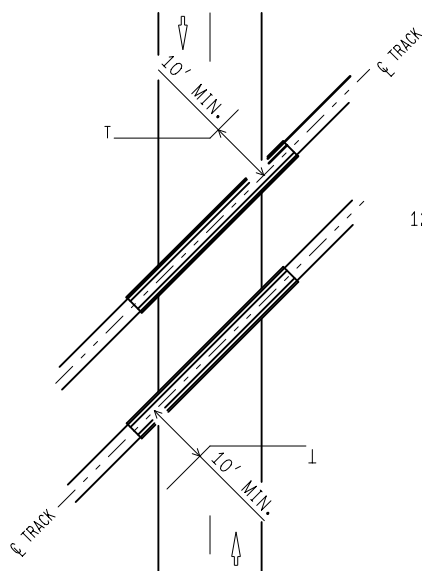
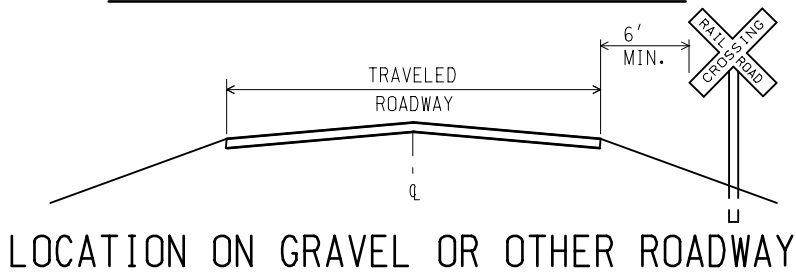


### LOCATION ON PAVED ROADWAY

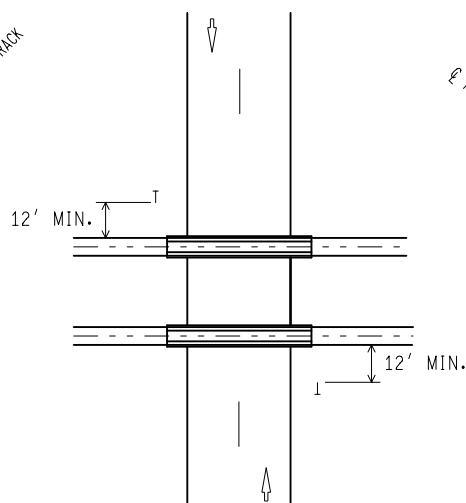
\* ALTHOUGH 2' IS RECOMMENDED AS A WORKING URBAN MINIMUM CLEARANCE, A CLEARANCE OF 1' FROM THE CURB FACE IS PERMISSIBLE WHERE SIDEWALK WIDTH IS LIMITED OR WHERE EXISTING POLES ARE CLOSE TO THE CURB.



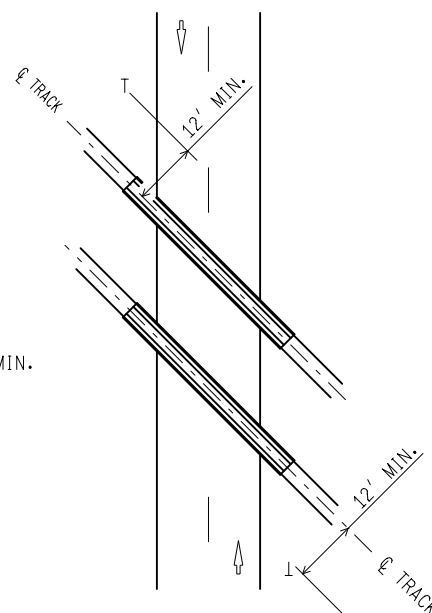
### LOCATION ON CURBED ROADWAY



### OBTUSE ANGLE



### RIGHT ANGLE



### ACUTE ANGLE

NOTE: SEE V111-965 FOR PAVEMENT MARKINGS

NOT TO SCALE

MICHIGAN DEPARTMENT OF TRANSPORTATION  
BUREAU OF HIGHWAY DEVELOPMENT STANDARD PLAN

08/08/11  
F.H.W.A. APPROVAL

07/20/11  
PLAN DATE

SIGN-130-B

SHEET  
5 OF 5

NOTE: THE ORIGINAL SIGNED COPY IS KEPT ON FILE AT THE MICHIGAN DEPARTMENT OF TRANSPORTATION.