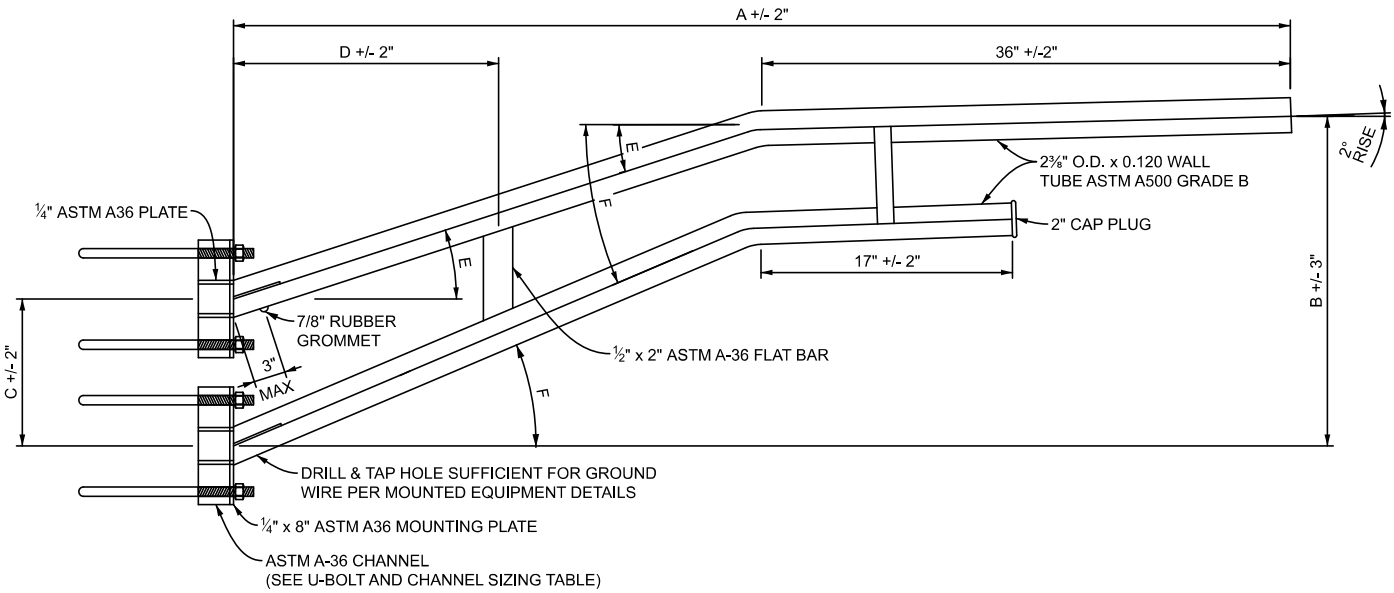


U-BOLT AND CHANNEL SIZING		
POLE O.D.	U-BOLT SIZE	CHANNEL SIZE
8 1/2" TO 9 1/8"	3/8"-11	C6x13
9 1/8" TO 10 1/4"	1/2"-10	C6x13
10 1/4" TO 16 1/8"	3/4"-9	C9x20
16 1/8" TO 18 1/8"	1"-8	C12x25

**1** STEEL POLE MOUNTED  
PLAN - TRUSS BRACKET ASSEMBLY  
N.T.S.



TRUSS BRACKET DIMENSIONS AND LIMITS							
A	B	C	D	E	F	MAX DEVICE WEIGHT (LBS)*	MAX DEVICE PROJECTED AREA (SFT)*
18'-0"	81 3/4"	21 3/4"	84"	18°	23°	30	1.00
15'-0"	66"	18"	66"	18°	23°	60	2.11
12'-0"	50 3/8"	14 1/4"	54"	18°	23°	75	2.75
9'-0"	36 3/4"	12"	36"	18°	23°	90	3.17
6'-0"	23"	10"	18"	18°	27°	90	3.17

\* THE SUM OF ALL DEVICE WEIGHTS AND PROJECTED AREAS SUPPORTED BY THE TRUSS BRACKET MUST BE LOWER THAN THESE VALUES.

**2** STEEL POLE MOUNTED  
ELEVATION - TRUSS BRACKET ASSEMBLY  
N.T.S.

APPROVED BY: \_\_\_\_\_  
DIRECTOR, BUREAU OF FIELD SERVICES

APPROVED BY: \_\_\_\_\_  
DIRECTOR, BUREAU OF DEVELOPMENT



DEPARTMENT DIRECTOR  
BRADLEY C. WIEFERICH, PE

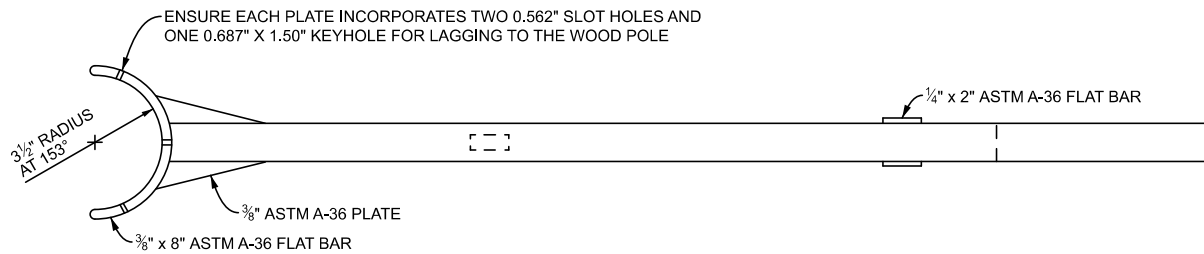
STANDARD PLAN FOR  
STEEL TRUSS BRACKET

(SPECIAL DETAIL)  
FHWA APPROVAL

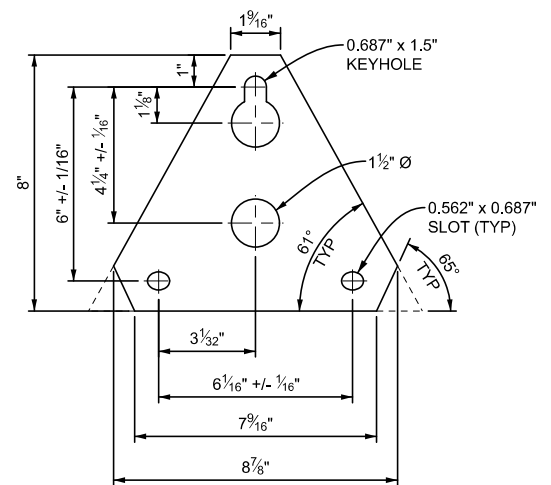
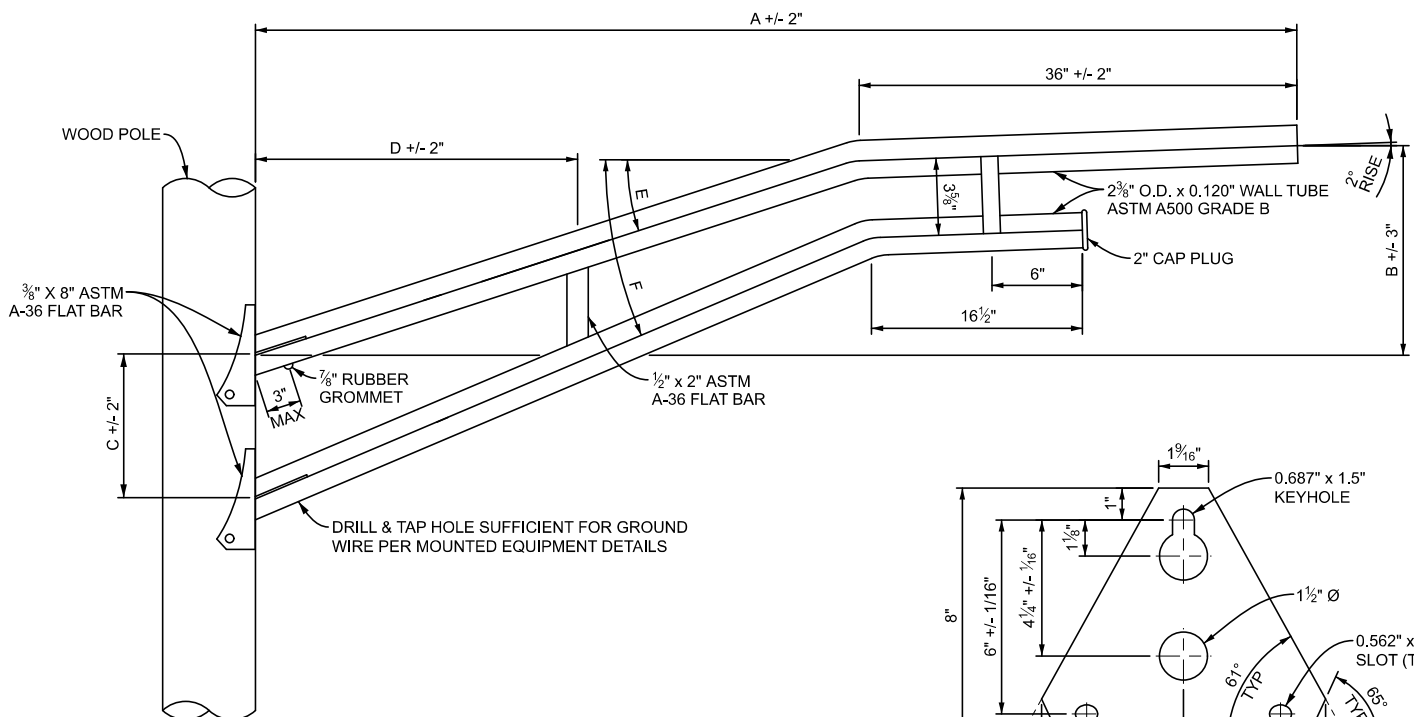
06/24/24  
PLAN DATE

SIG-060-B

SHEET  
1 OF 3



**3** WOOD POLE MOUNTED  
PLAN - TRUSS BRACKET ASSEMBLY  
N.T.S.



TRUSS BRACKET DIMENSIONS					
A	B	C	D	E	F
15'-0"	47 3/4"	18"	66"	18°	23°
12'-0"	36"	14 3/8"	48"	18°	23°
9'-0"	26 3/8"	12"	36"	18°	23°
6'-0"	12 1/2"	8 1/2"	18"	18°	23°

**4** WOOD POLE MOUNTED  
ELEVATION - TRUSS BRACKET ASSEMBLY  
N.T.S.

**8** DETAIL - MOUNTING PLATE  
N.T.S.



DEPARTMENT DIRECTOR  
BRADLEY C. WIEFERICH, PE

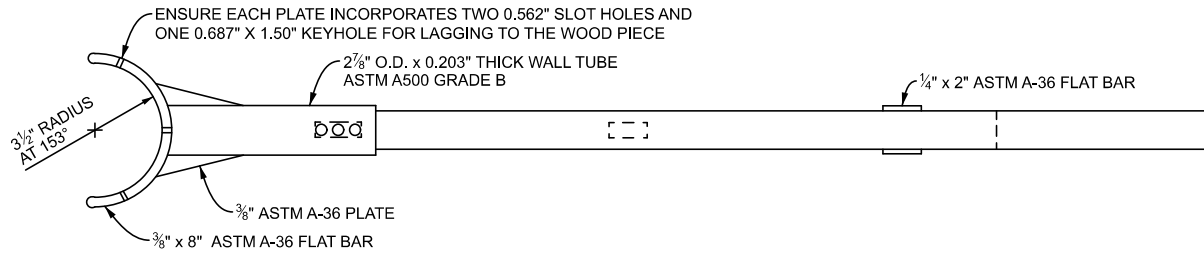
STANDARD PLAN FOR  
WOOD POLE MOUNTING DETAIL

(SPECIAL DETAIL)  
FHWA APPROVAL

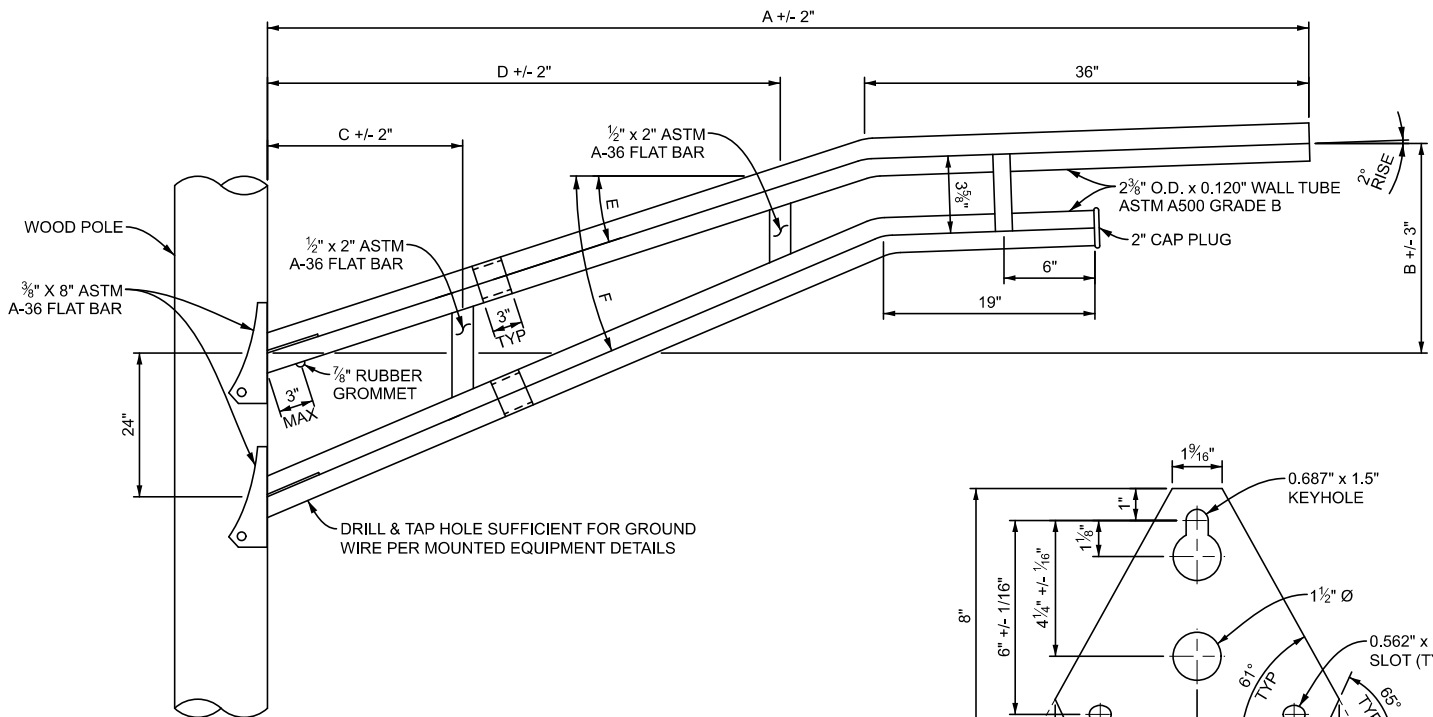
06/24/24  
PLAN DATE

SIG-060-B

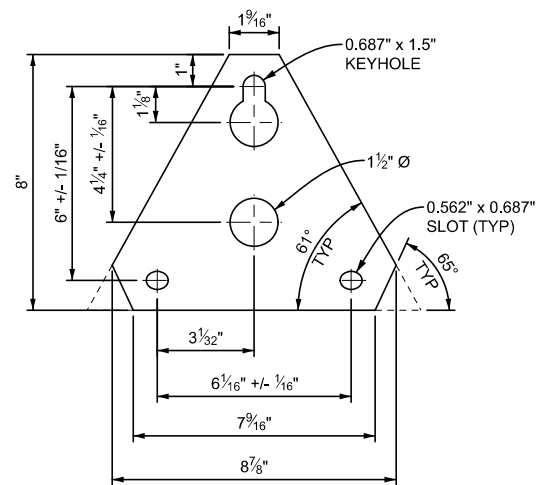
SHEET  
2 OF 3



**6** WOOD POLE MOUNTED  
PLAN - TRUSS BRACKET ASSEMBLY  
N.T.S.



TRUSS BRACKET DIMENSIONS					
A	B	C	D	E	F
17'-6"	60"	28"	80"	19°	26°



**7** WOOD POLE MOUNTED  
ELEVATION - TRUSS BRACKET ASSEMBLY  
N.T.S.

**8** DETAIL - MOUNTING PLATE  
N.T.S.



DEPARTMENT DIRECTOR  
BRADLEY C. WIEFERICH, PE

STANDARD PLAN FOR  
WOOD POLE MOUNTING PLATE

(SPECIAL DETAIL)  
FHWA APPROVAL

06/24/24  
PLAN DATE

SIG-060-B

SHEET  
3 OF 3