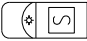


KEY

- CHANNELIZING DEVICES
- ⚡ LIGHTED ARROW PANEL (CAUTION MODE)
- ← TRAFFIC FLOW
-  SHADOW VEHICLE WITH AMBER BEACON AND OPTIONAL TRUCK MOUNTED ATTENUATOR

NOTES

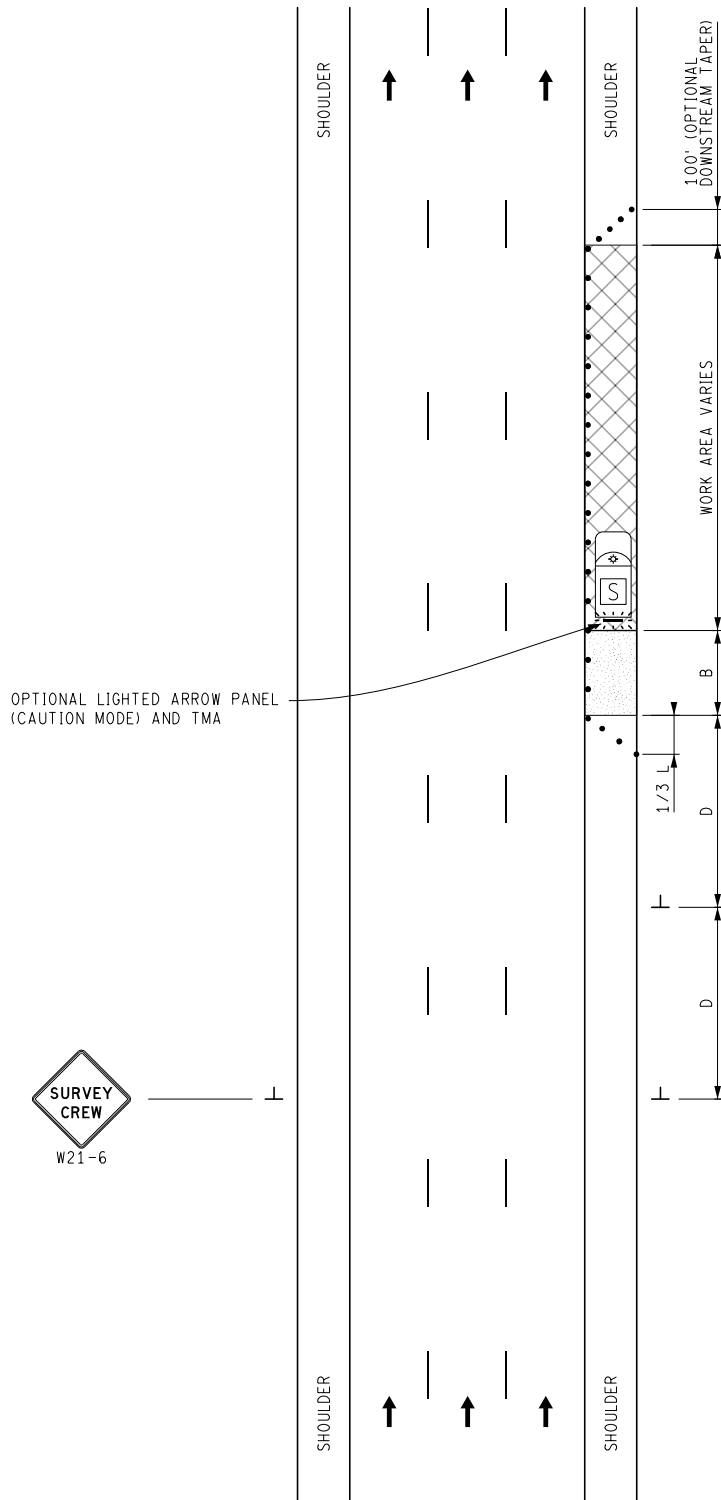
THIS TYPICAL ALSO MAY BE USED WHEN WORK IS BEING PERFORMED ON THE LEFT SHOULDER ADJACENT TO THE MEDIAN OF THE FREEWAY. IN THAT CASE, THE "LEFT SHOULDER CLOSED" SIGN SHALL BE SUBSTITUTED.

STANDARD NOTES

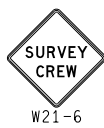
(SEE 102-GEN-NOTES)

GENERAL: G1, G2, G3, G4
 SIGNING: S1
 DEVICES: TCD1, TCD2, TCD6
 MAINT & SURV: MS2, MS3, MS4, MS6


SEE GUIDANCE NOTE 03 IN SECTION 66.07 OF THE MMUTCD FOR WHY THE SIGN ON THE SIDE WITHOUT THE SHOULDER CLOSURE IS NOT NEEDED.



OPTIONAL LIGHTED ARROW PANEL (CAUTION MODE) AND TMA



NOT TO SCALE

 FILE: 5200-S-FW-SHL.dgn	SURVEYING MAINTAINING TRAFFIC TYPICAL	DURATION: SHORT-TERM STATIONARY	SHOULDER CLOSURE ON A DIVIDED ROADWAY OR FREEWAY	DATE: MAY 2021
				NO: 5200-S-FW-SHL
				SHEET: 1 OF 1