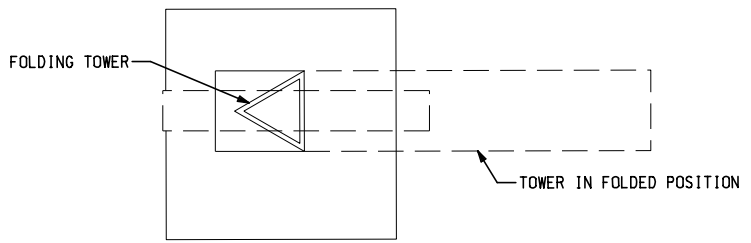
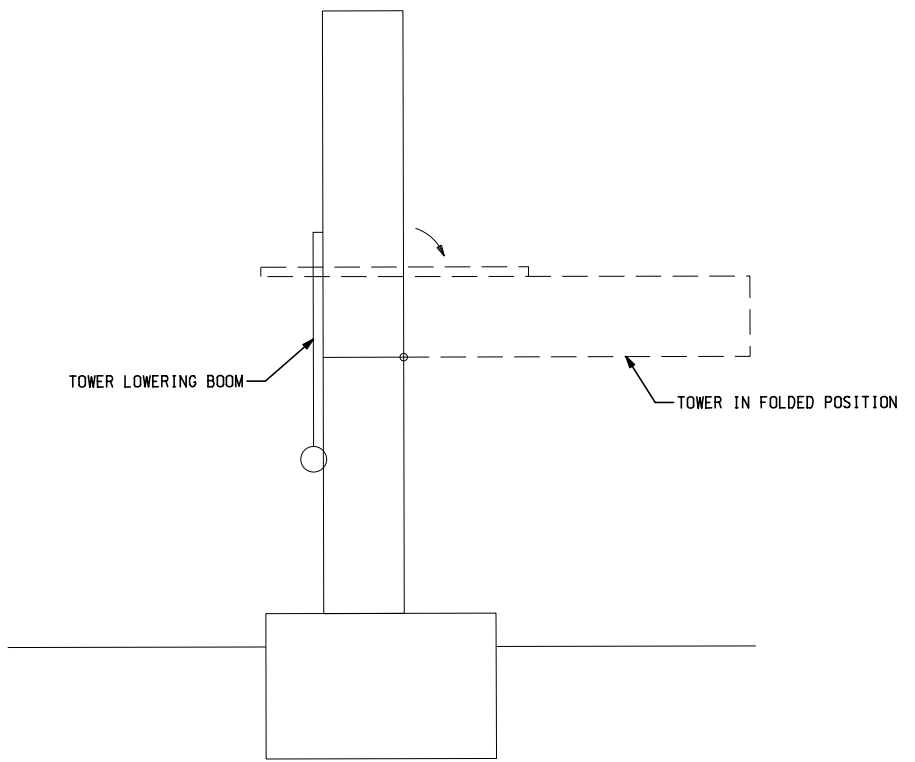


ESS TOWER DETAIL
ELEVATION VIEW
SCALE: NTS



TYPICAL TOWER FOLDING DETAIL
PLAN VIEW
SCALE: NTS



TYPICAL TOWER FOLDING DETAIL
ELEVATION VIEW
SCALE: NTS

Equipment	Recommended Mounting	Horiz Offset from Tw	Weight
Air Temperature Sensor/ Relative Humidity Sensor	Tower, at approx 8' height	approx 12"	2 lb
Barometric Pressure Sensor	In RPU cabinet	0 (inside RPU cabinet)	1 lb
Precipitation/Visibility Sensor	Tower, at approx 8'7" height	approx 12"	34 lb
Ultrasonic Anemometer	Tower, 10" below top of tower	2'	2 lb
Radar Precipitation Sensor Tower	Tower, 10" below top of tower	2'	2 lb
Pavement Sensor	Flush with Pavement Surface	inset in ground	n/a
Subsurface Probe	In vertical array, below pavement	inset in ground	n/a
PTZ Camera	Tower, near top	approx 12"	10 lb
Tower			300 lb
Microwave Vehicle Detection System High Resolution (MVDS)	Tower, at 20' to 30' height (site specific)	0 (bolts directly to tower)	5 lb
Wireless Antenna	Tower, Near Top		5 lb
Hinged Base	Tower, Underneath		3 lb
IR Illuminator	Below Camera		3-4 lb
Air Terminal	Top of Tower		

NOTES:

- ITEMS NOT SHOWN:
CONCRETE SERVICE PAD: IN-GROUND POWER, COMMUNICATION, SENSOR CABLES AND BAROMETRIC PRESSURE SENSOR.
- IT IS THE CONTRACTOR'S RESPONSIBILITY TO INSTALL PTZ CAMERA TO PROVIDE BEST VIEWING ANGLE OF BOTH DIRECTIONS OF TRAFFIC AND SENSORS ON ROADWAY. FINAL PLACEMENT SHALL BE APPROVED BY THE ENGINEER.
- LIGHTNING ROD MUST BE MOUNTED TO PROTECT ESS EQUIPMENT.
- IR ILLUMINATOR SHALL BE ALIGNED TO PROVIDE BEST VIEW OF ROADWAY AND PAVEMENT SENSORS. FINAL PLACEMENT SHALL BE APPROVED BY THE ENGINEER.
- ATTACHMENTS OF ALL DEVICES TO TOWER SHALL BE PER MANUFACTURER SPECIFICATIONS.
- ALL HARDWARE SHALL BE STAINLESS STEEL.
- ALL EQUIPMENT SHALL BE MOUNTED TO THE STRUCTURE WITH THE USE OF PRE-DRILLED HOLES ON THE TOWER. IT IS THE CONTRACTOR'S RESPONSIBILITY TO DETERMINE THE EXACT SIZE AND PLACEMENT OF THE HOLES ON THE TOWER. UNUSED HOLES SHALL BE FILLED USING APPROPRIATELY SIZED NUTS AND BOLTS.
- EQUIPMENT SHOWN ABOVE IS FOR DIAGRAMMATIC PURPOSES ONLY AND ARE NOT OF SPECIFIC PRODUCTS. CONTRACTOR SHALL PROCURE EQUIPMENT BASED ON THE SPECIFICATIONS IN THE PROPOSAL.

FINAL ROW PLAN REVISIONS		(SUBMITTAL DATE:)	
NO.	DATE	AUTH	DESCRIPTION



NO SCALE

PRINT DATE: 1/12/2017
FILE: ESS Tower- 1-12-2017 ITS052B

DATE:
DESIGN UNIT:
TSC:

CS:
JN:

ESS TOWER
DRAWING SHEET
SHEET 1 OF 1