

### KEY

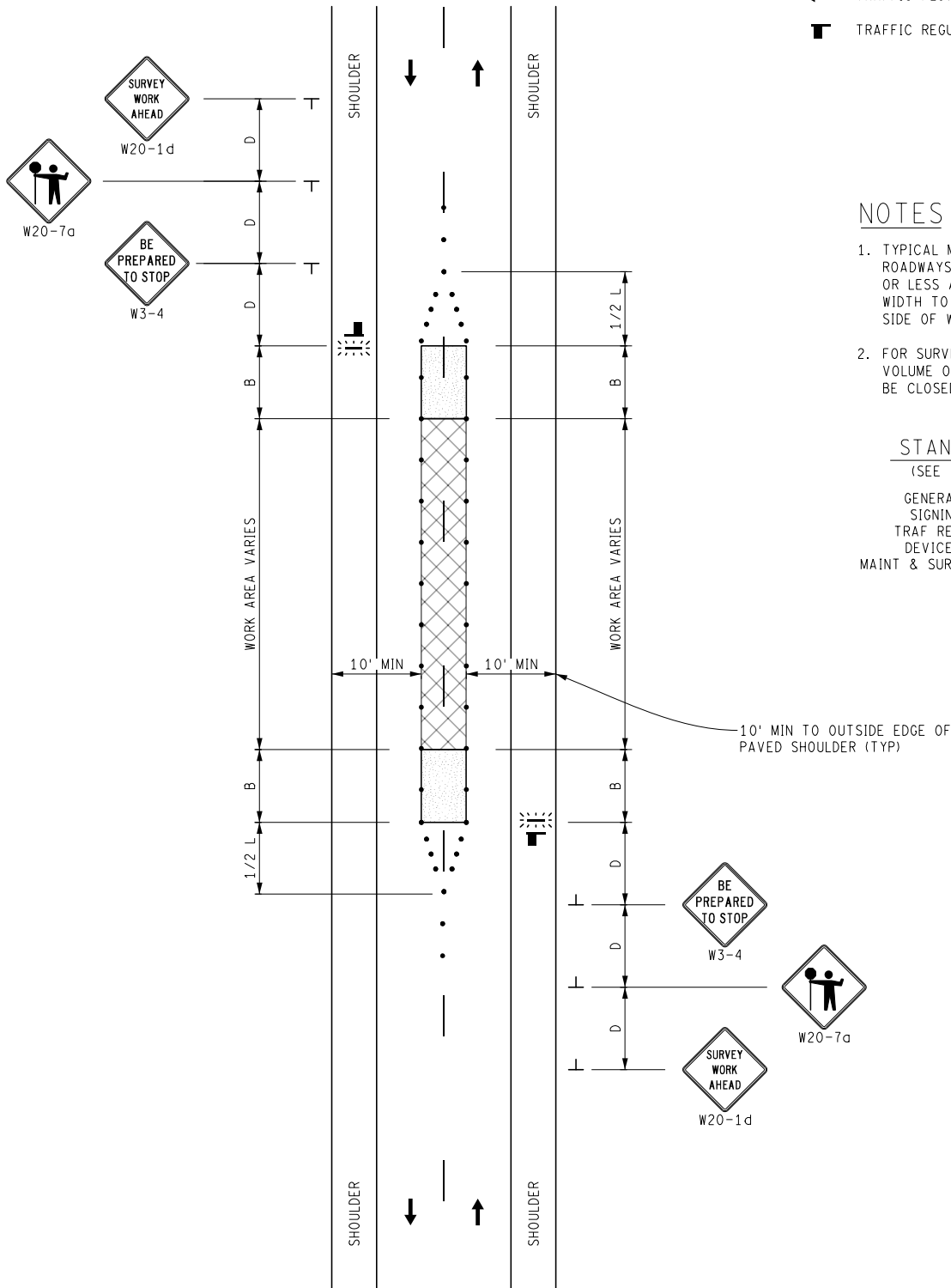
- CHANNELIZING DEVICES
- ⚡ LIGHTED ARROW PANEL (CAUTION MODE)
- ← TRAFFIC FLOW
- TRAFFIC REGULATOR

### NOTES

1. TYPICAL MAY ONLY BE USED ON LOW VOLUME ROADWAYS WITH POSTED SPEED LIMIT OF 55 MPH OR LESS AND SUFFICIENT LANE AND SHOULDER WIDTH TO ALLOW 10 FT TRAVEL LANES ON EACH SIDE OF WORK SPACE.
2. FOR SURVEYING ON THE CENTERLINE OF A HIGH VOLUME OR HIGHER SPEED ROAD, ONE LANE SHALL BE CLOSED USING APPROPRIATE LANE CLOSURE.

### STANDARD NOTES

(SEE 102-GEN-NOTES)  
 GENERAL: G1, G2, G3, G4  
 SIGNING: S1  
 TRAF REG: TR1, TR2  
 DEVICES: TCD1, TCD2, TCD6  
 MAINT & SURV: MS2, MS3, MS4, MS6



NOT TO SCALE

	SURVEYING MAINTAINING TRAFFIC TYPICAL	DURATION: SHORT-TERM STATIONARY	CLOSURE OF THE CENTER OF A TWO-LANE, TWO-WAY ROADWAY UTILIZING TRAFFIC REGULATORS FOR POSTED SPEEDS OF 55 MPH OR LESS	DATE: MAY 2021
				NO: 5182A-S-NFW-MID
FILE: 5182A-S-NFW-MID.dgn				SHEET: 1 OF 1