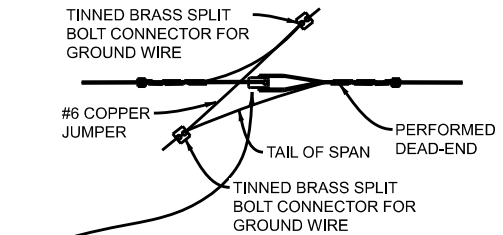


1 DETAIL - TYPICAL SPAN WIRE INSTALLATION T.S.
NTS STEEL POLE & WOOD POLES

NO.	ITEM
1	TRAFFIC SIGNAL (NO. HEADS AS INDICATED)
2	SPAN WIRE HANGER
3	5/16" EXTRA HIGH STRENGTH SPAN WIRE
4	3" SERVICE CAP (WEATHERHEAD), (METAL FOR STEEL AND PVC FOR WOOD POLES)
5	P.J. TRAFFIC SIGNAL CABLE (AS SPECIFIED)
6	PREFORMED LASHING RODS
7	POLE BAND CLAMP (STEEL POLE)
8	GUY THIMBLE (2" DIA.)
9	(2) 5/8" X 4" LONG BOLT, NUT, WASHERS PER POLE BAND CLAMP (STEEL POLE)
10	INSTALL SPAN WIRE PREFORMED (ARMOR ROD) UNDER EACH SPAN HANGER
11	ACCESS HAND HOLE ALL NEW & EXISTING STEEL POLES
12	5/8" EYEBOLT, OVAL EYE AND NUT
13	WOOD MOULDING OR PLASTIC DUCT (10' FROM GROUND LEVEL)
14	3" SCHEDULE 80 PVC OR RIGID METAL (*) SEE NOTE ON SHEET 2 OF 5
15	PREFORMED GUY GRIP DEAD ENDS



DETAIL - COPPER JUMPER
NTS

NOTE:
PORCELAIN STRAIN INSULATOR (IF REQUIRED) SHALL MEET THE CODES AND PLACEMENT REQUIREMENTS OF THE LOCAL UTILITY CO.

APPROVED BY: _____
DIRECTOR, BUREAU OF FIELD SERVICES



DEPARTMENT DIRECTOR
BRADLEY C. WIEFERICH, PE

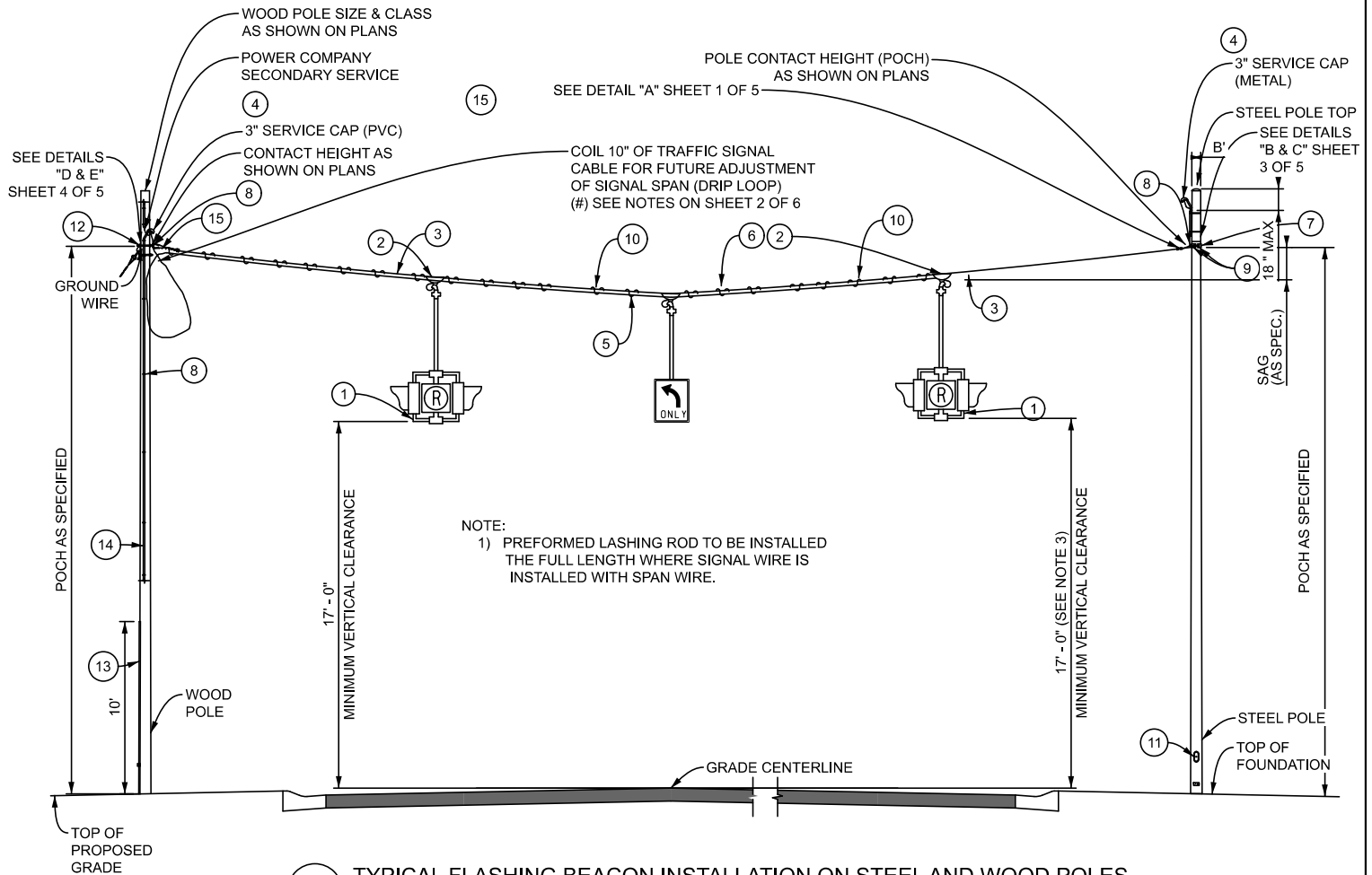
APPROVED BY: _____
DIRECTOR, BUREAU OF DEVELOPMENT

STANDARD PLAN FOR
SPAN WIRE CASING DETAILS

(SPECIAL DETAIL) 07/27/23
FHWA APPROVAL PLAN DATE

SIG-010-A

SHEET
1 OF 7



1 TYPICAL FLASHING BEACON INSTALLATION ON STEEL AND WOOD POLES
NTS

NO.	ITEM
1	TRAFFIC SIGNAL (NO. HEADS AS INDICATED)
2	SPAN WIRE HANGER
3	5/16" EXTRA HIGH STRENGTH SPAN WIRE
4	3" SCHEDULE 80 PVC OR RIGID METAL (*) SEE NOTE ON SHEET 2 OF 5
5	P.J. TRAFFIC SIGNAL CABLE (AS SPECIFIED)
6	PREFORMED LASHING RODS
7	POLE BAND CLAMP (STEEL POLE)
8	GUY THIMBLE (2" DIA.)
9	(2) 5/8" X 4" LONG BOLT, NUT, WASHERS PER POLE BAND CLAMP (STEEL POLE)
10	INSTALL SPAN WIRE PREFORMED (ARMOR ROD) UNDER EACH SPAN HANGER
11	ACCESS HAND HOLE ALL NEW & EXISTING STEEL POLES
12	5/8" EYEBOLT, OVAL EYE AND NUT
13	WOOD MOULDING OR PLASTIC DUCT (10' FROM GROUND LEVEL)
14	3" SERVICE CAP (WEATHERHEAD), (METAL FOR STEEL AND PVC FOR WOOD POLES)
15	PREFORMED GUY GRIP DEAD ENDS

NOTES:
 (*) FOR PROJECTS MAINTAINED BY THE WAYNE CO. DEPARTMENT OF PUBLIC SERVICES (WCDPS), USE RIGID METAL FOR CONDUIT(S) FROM GRADE LEVEL TO 10' (MIN.) ABOVE GRADE OR AS DIRECTED BY THE ENGINEER.

(#) FOR PROJECTS MAINTAINED BY THE ROAD COMMISSION FOR OAKLAND COUNTY (RCOC), USE DRIP LOOP (WITHOUT COIL) FOR FUTURE ADJUSTMENT OF SIGNAL SPAN.



DEPARTMENT DIRECTOR
BRADLEY C. WIEFERICH, PE

STANDARD PLAN FOR
SPAN WIRE CASING DETAILS

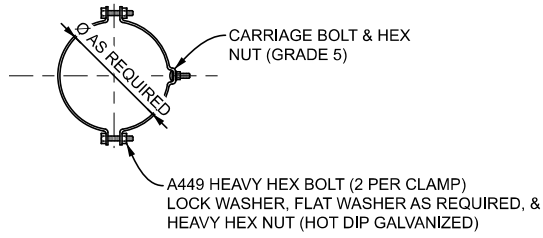
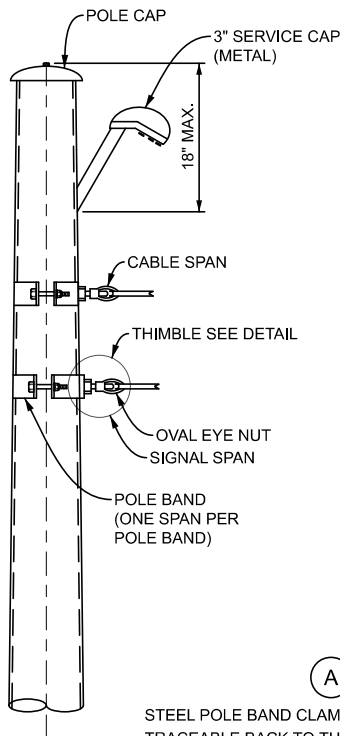
(SPECIAL DETAIL)
FHWA APPROVAL

07/27/23
PLAN DATE

SIG-010-A

SHEET
2 OF 7

SECT



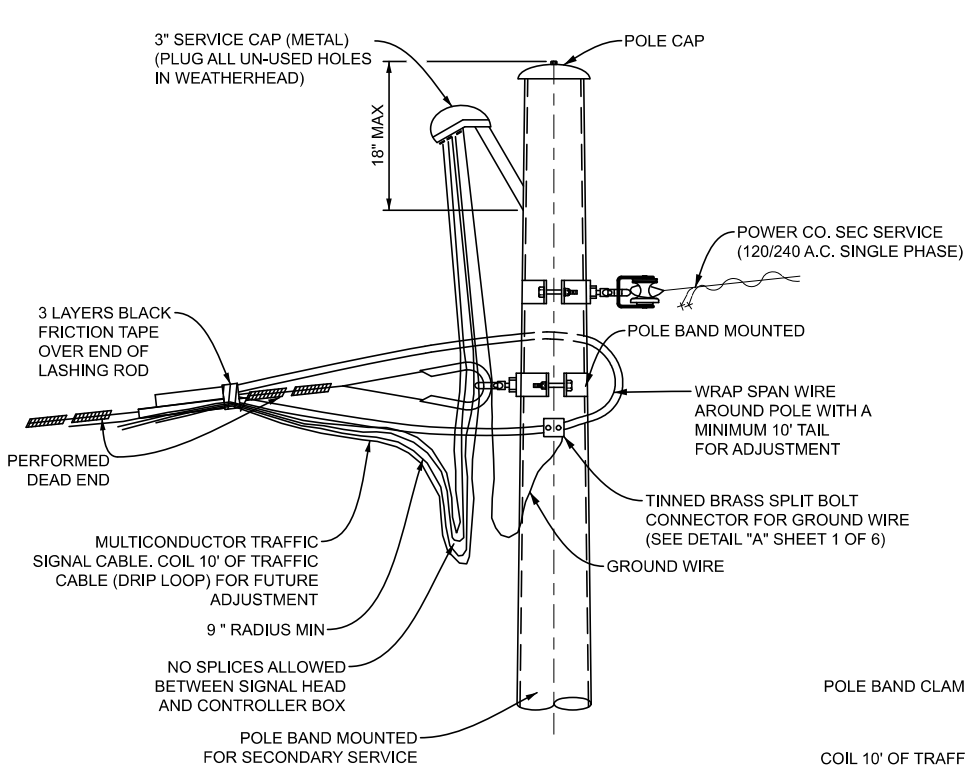
A DETAIL - POLE BAND CLAMP ON STEEL POLE

SIDE

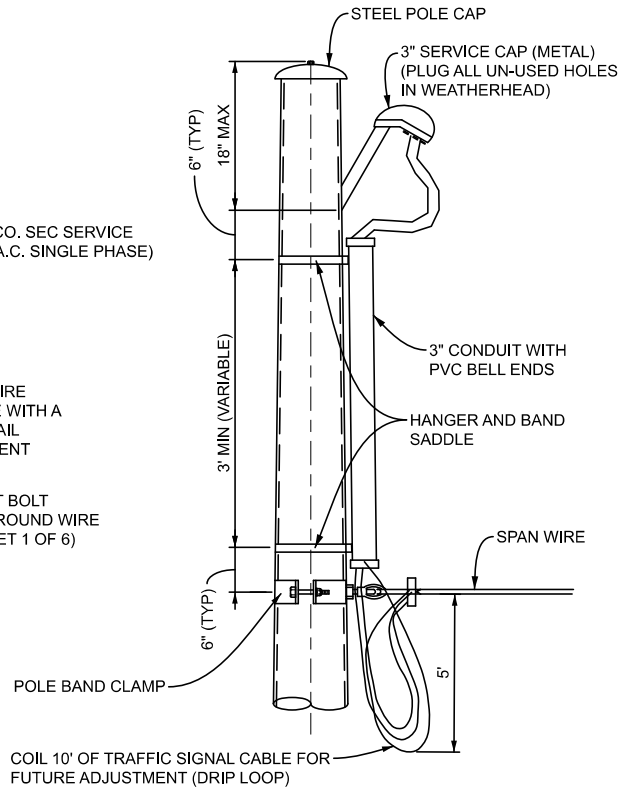
BACK

B DETAIL - THIMBLE

STEEL POLE BAND CLAMPS MUST BE STAMPED WITH IDENTIFICATION THAT IS TRACEABLE BACK TO THE MANUFACTURER, WHICH CAN BE USED TO DETERMINE THE MONTH AND YEAR OF CLAMP MANUFACTURE. THE STAMPING METHOD MUST BE A LOW STRESS STAMPING METHOD. THE STAMP CANNOT BE LOCATED NEAR THE BOLTED FLANGE, MUST BE LOCATED NEAR THE CENTER OF THE CLAMP ON THE BACK SIDE FACING AWAY FROM TRAFFIC, AND BE VISIBLE AFTER GALVANIZING. ALL BEND RADII ARE TO BE A MINIMUM OF 1.5 TIMES THE POLE BAND THICKNESS.



C DETAIL-CABLING ON STEEL POLE

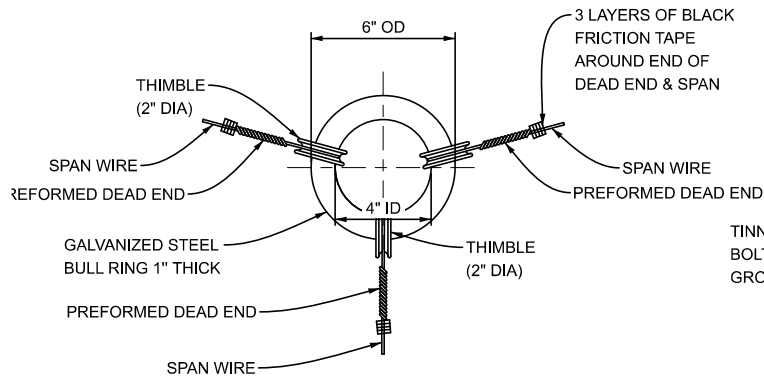


D DETAIL - SERVICE CABLE ON STEEL POLE

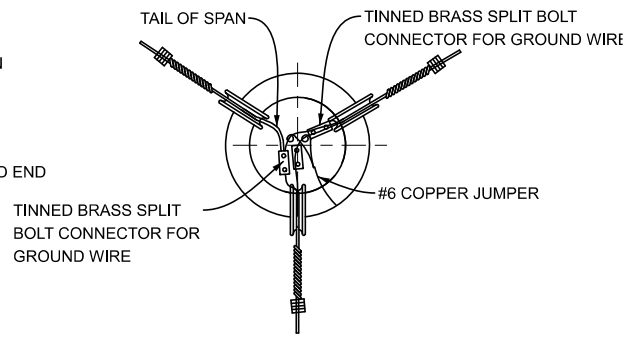
MDOT
Michigan Department of Transportation

DEPARTMENT DIRECTOR
BRADLEY C. WIEFERICH, PE

STANDARD PLAN FOR SPAN WIRE CASING DETAILS			
(SPECIAL DETAIL)	07/27/23	SIG-010-A	SHEET 3 OF 7
FHWA APPROVAL	PLAN DATE		

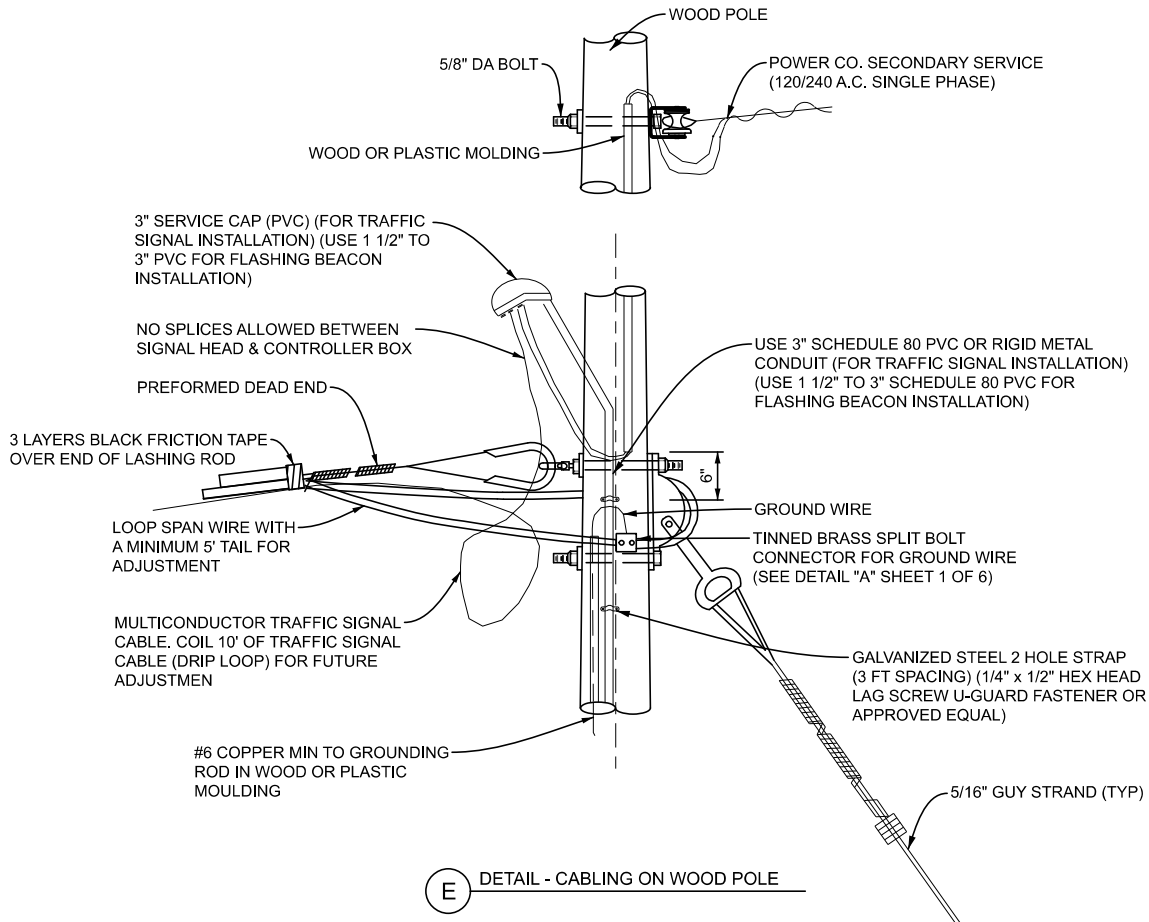


DETAIL
3-WAY TIE OFF BULL RING



DETAIL COPPER JUMPER
3-WAY TIE OFF

NOTE:
PORCELAIN STRAIN INSULATOR (IF REQUIRED)
SHALL MEET THE CODES AND PLACEMENT
REQUIREMENTS OF THE LOCAL UTILITY CO.



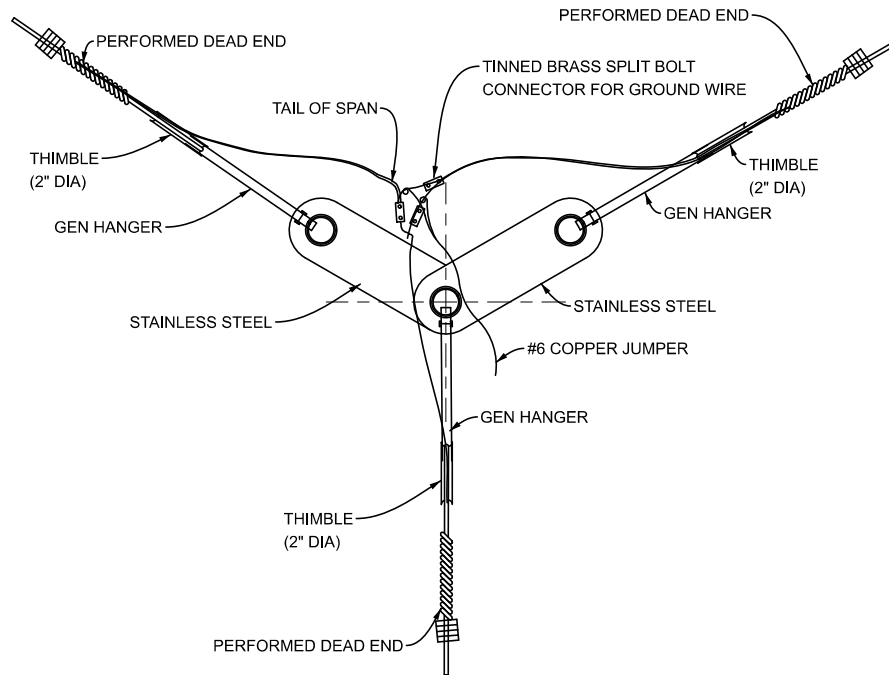
E **DETAIL - CABLING ON WOOD POLE**

MDOT
Michigan Department of Transportation

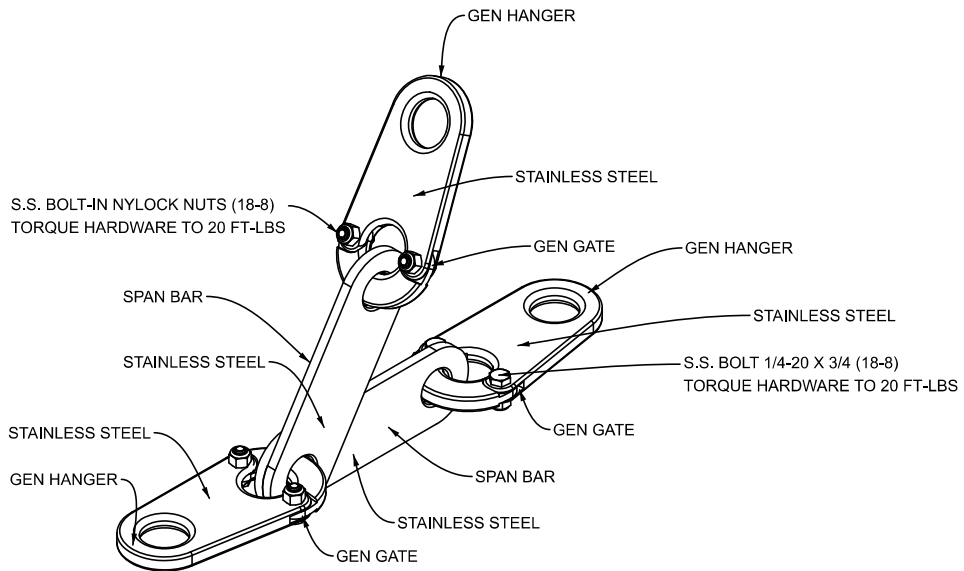
DEPARTMENT DIRECTOR
BRADLEY C. WIEFERICH, PE

STANDARD PLAN FOR SPAN WIRE CASING DETAILS			
(SPECIAL DETAIL)	07/27/23	SIG-010-A	SHEET
FHWA APPROVAL	PLAN DATE		4 OF 7

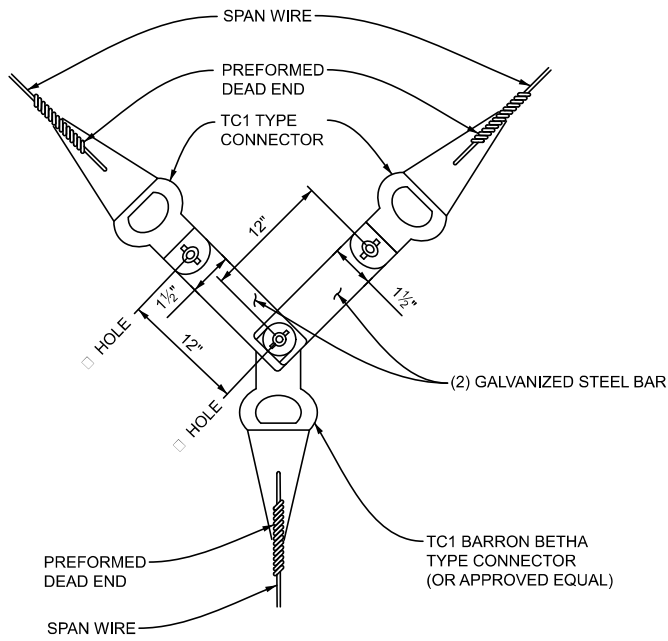
SECT



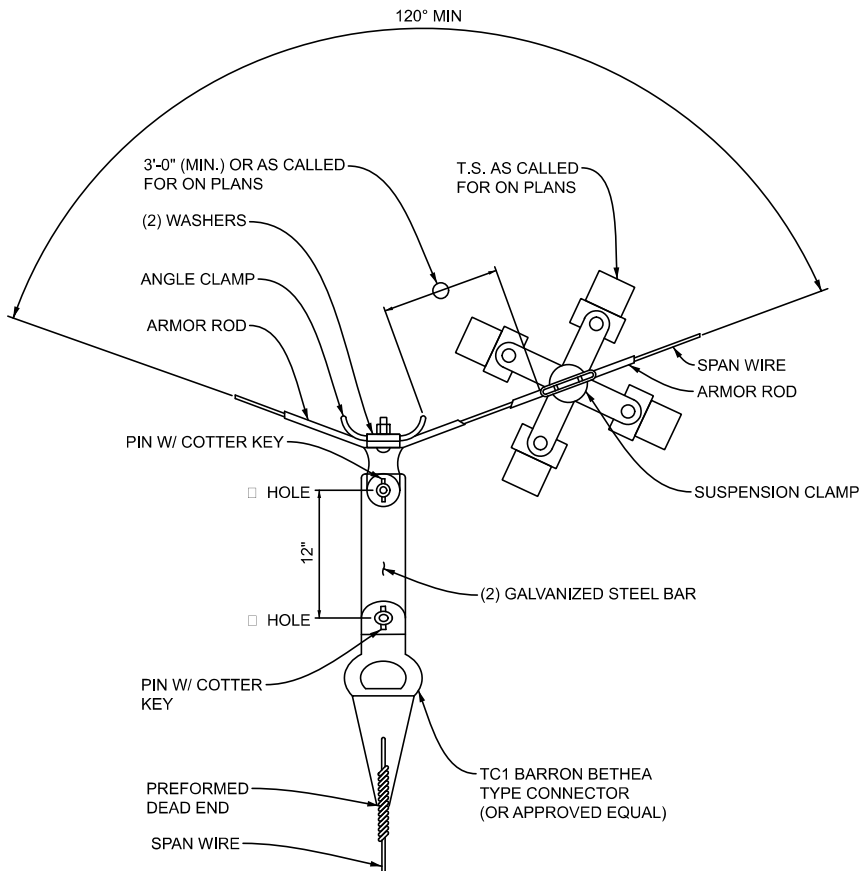
**DETAIL COPPER JUMPER
3-WAY TIE OFF**



DETAIL SPAN HANGER ASSEMBLY (ALTERNATE)



PULL-OFF CONNECTION DETAIL (ALTERNATE)
FOR 3-WAY SUSPENSION



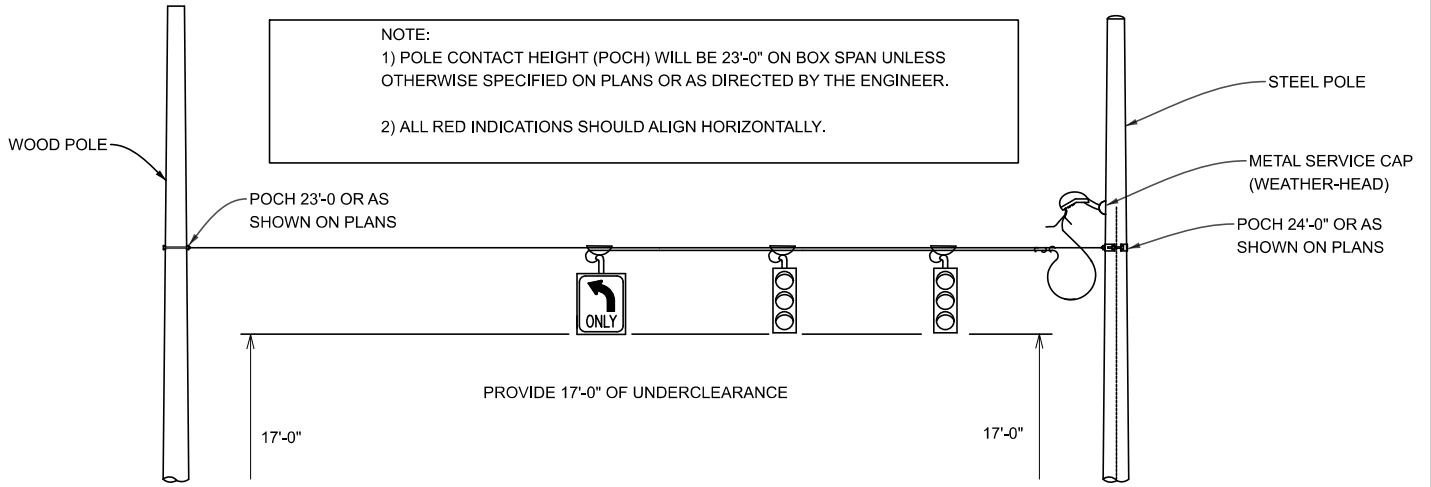
PULL-OFF CONNECTION DETAIL (ALTERNATE)
FOR 3-WAY SUSPENSION

MDOT
Michigan Department of Transportation

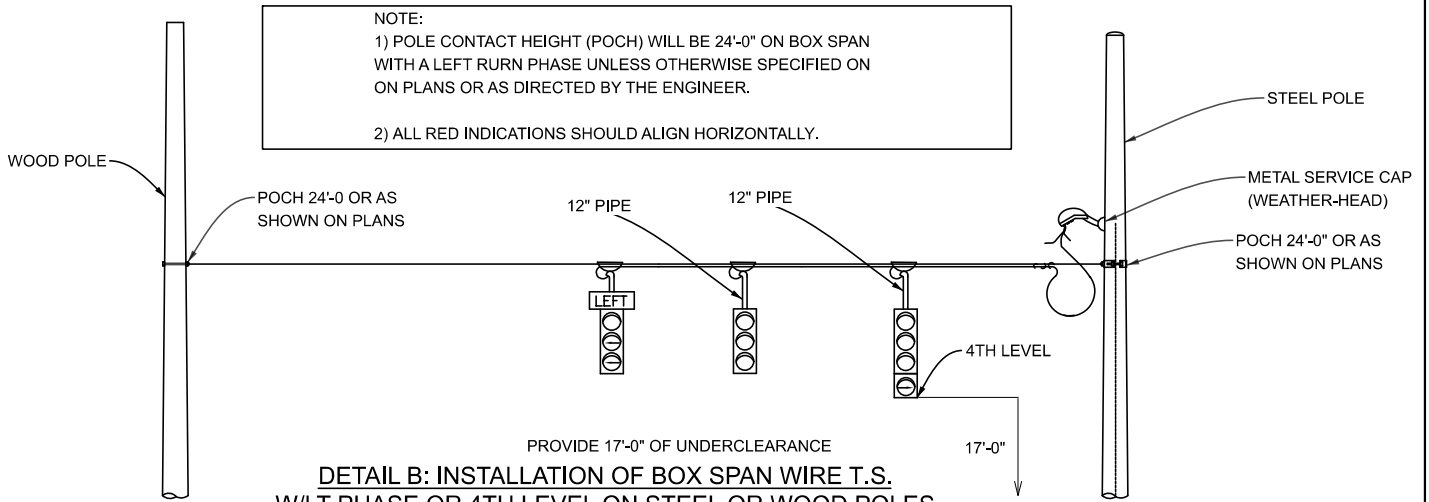
DEPARTMENT DIRECTOR
BRADLEY C. WIEFERICH, PE

STANDARD PLAN FOR SPAN WIRE CASING DETAILS			
(SPECIAL DETAIL) FHWA APPROVAL	07/27/23 PLAN DATE	SIG-010-A	SHEET 6 OF 7

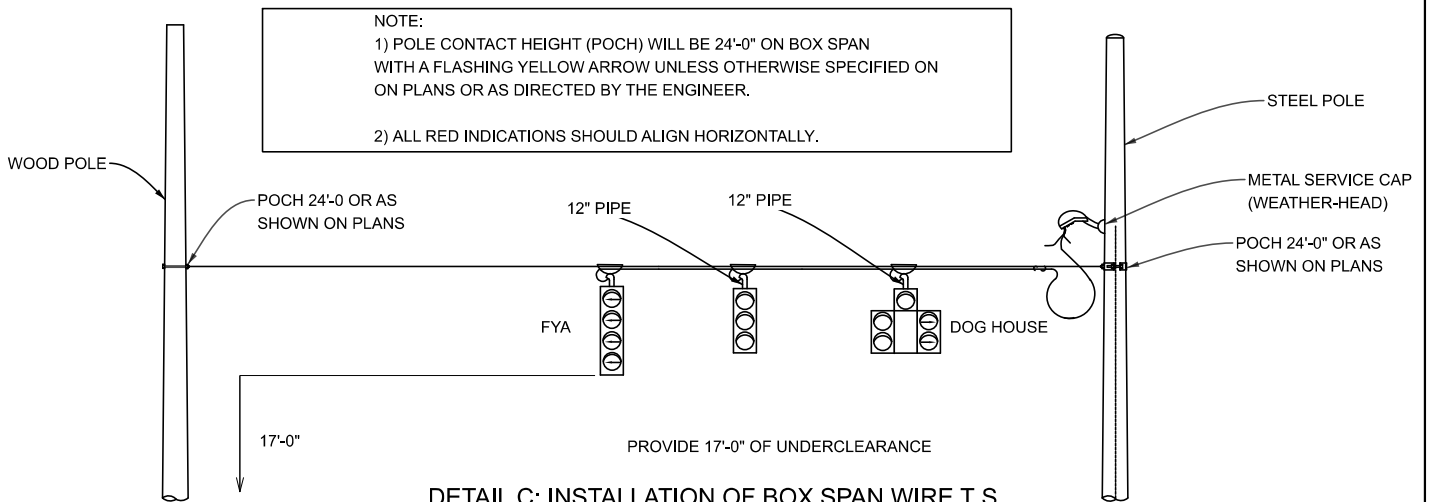
SECT



DETAIL INSTALLATION OF BOX SPAN WIRE T.S. ON STEEL OR WOOD POLES



DETAIL B: INSTALLATION OF BOX SPAN WIRE T.S. W/LT PHASE OR 4TH LEVEL ON STEEL OR WOOD POLES



DETAIL C: INSTALLATION OF BOX SPAN WIRE T.S. FYA AND DOGHOUSE ON STEEL OR WOOD POLES

BOX SPAN WIRE T.S. ON STEEL OR WOOD POLES FOR USE ON OAKLAND COUNTY ROADS ONLY



DEPARTMENT DIRECTOR
BRADLEY C. WIEFERICH, PE

STANDARD PLAN FOR
SPAN WIRE CASING DETAILS

(SPECIAL DETAIL)
FHWA APPROVAL

07/27/23
PLAN DATE

SIG-010-A

SHEET
7 OF 7

SECT