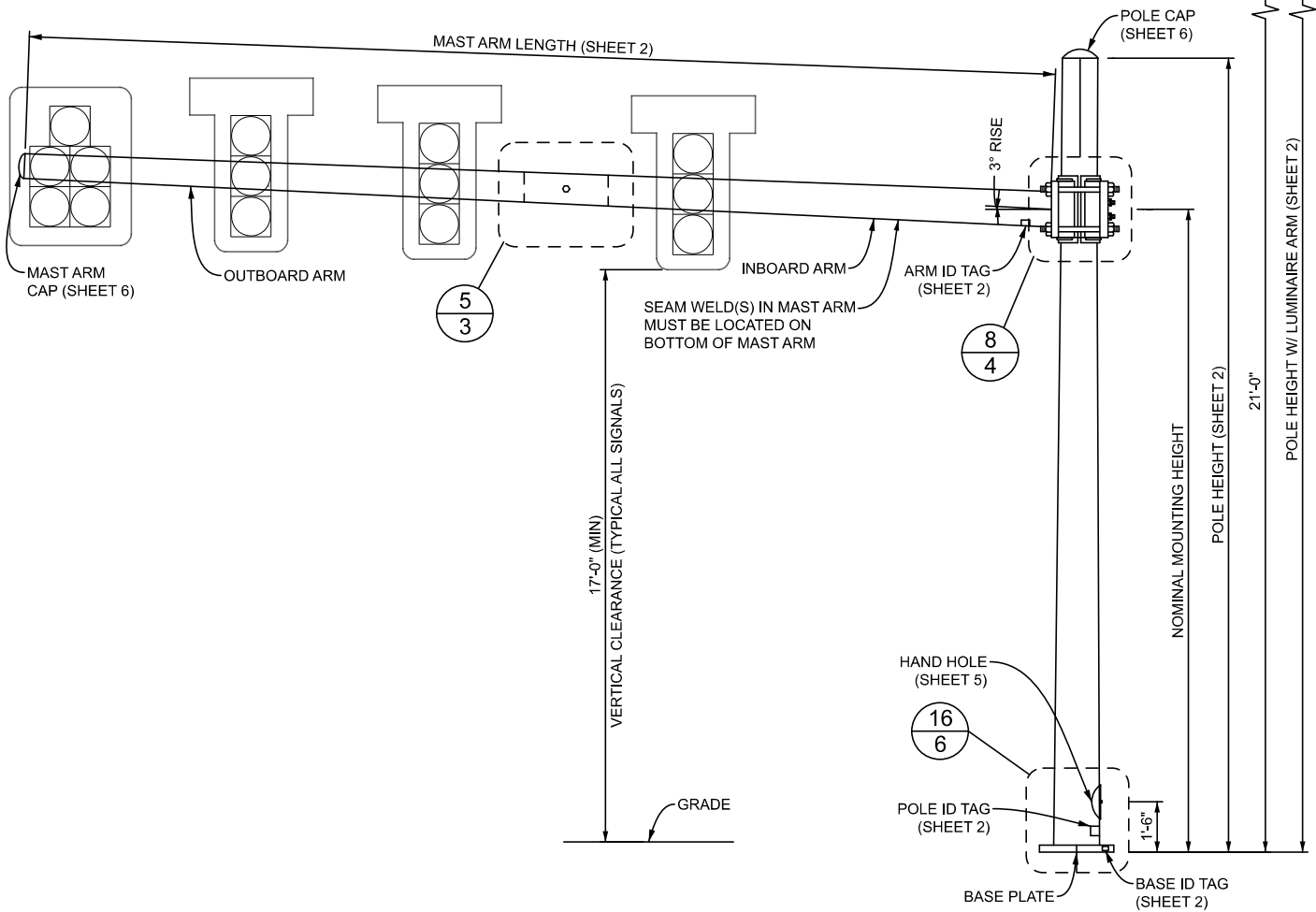
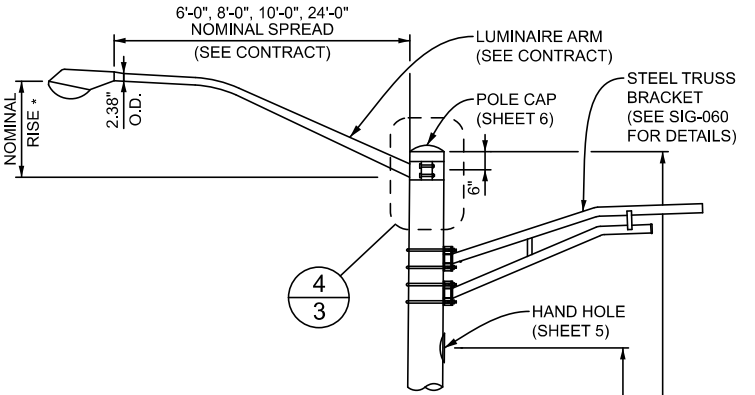


* NOMINAL RISE
 1'-6" (6'-0" ARM)
 1'-10" (8'-0" ARM)
 2'-0" (10'-0" ARM)
 5'-0" (24'-0" ARM)



ELEVATION - MAST ARM POLE

APPROVED BY: _____
 DIRECTOR, BUREAU OF FIELD SERVICES

APPROVED BY: _____
 DIRECTOR, BUREAU OF DEVELOPMENT



DEPARTMENT DIRECTOR
 BRADLEY C. WIEFERICH, PE

STANDARD PLAN FOR
 TRAFFIC SIGNAL MAST ARM POLE AND
 MAST ARM DETAILS - CATEGORY III

(SPECIAL DETAIL)
 FHWA APPROVAL

05/17/24
 PLAN DATE

SIG-033-B

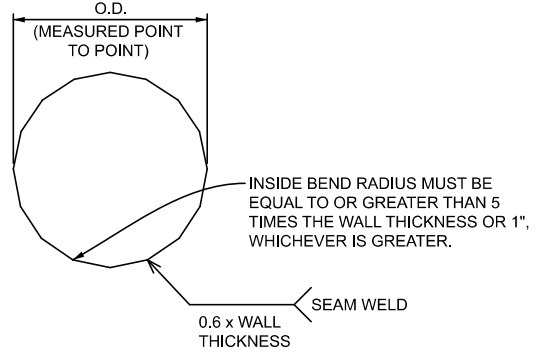
SHEET
 1 OF 6

TAPERED STEEL MAST ARM POLE			
POLE DIMENSIONS*	LUMINAIRE ARM DIMENSIONS	STEEL TRUSS BRACKET	MAST ARM LENGTH (FT)
0.4375"-14.00" x 11.06" x 21'-0"	6'-0"	NO	20, 25, 30, 35, 40, 45, 50
0.4375"-14.00" x 9.80" x 30'-0"	8'-0"	YES	
0.4375"-14.00" x 8.96" x 36'-0"	10'-0"	YES	
0.4375"-14.00" x 8.40" x 40'-0"	24'-0"	YES	
0.4375"-15.50" x 12.56" x 21'-0"	6'-0"	NO	55, 60
0.4375"-15.50" x 11.30" x 30'-0"	8'-0"	YES	
0.4375"-15.50" x 10.46" x 36'-0"	10'-0"	YES	
0.4375"-15.50" x 9.90" x 40'-0"	24'-0"	YES	

POLE TUBE TAPER IS 0.140 IN/FT
 * DIAMETERS GIVEN ARE O.D.

TAPERED STEEL MAST ARM	
MAST ARM LENGTH	MAST ARM DIMENSIONS*
20'-0"	0.2500"-8.00" x 5.20" x 20'-0"
25'-0"	0.2500"-8.00" x 4.50" x 25'-0"
30'-0"	0.2500"-8.00" x 3.80" x 30'-0"
35'-0"	0.2500"-11.00" x 6.10" x 35'-0"
40'-0"	0.2500"-11.00" x 5.40" x 40'-0"
45'-0"	0.3125"-11.00" x 8.66" x 16'-9" 0.1793"-9.18" x 5.10" x 29'-5"
50'-0"	0.3750"-15.00" x 12.66" x 16'-9" 0.2391"-13.37" x 8.48" x 34'-11"
55'-0"	0.3750"-15.00" x 12.66" x 16'-9" 0.2391"-13.37" x 7.78" x 39'-11"
60'-0"	0.4290"-15.00" x 12.66" x 16'-9" 0.3125"-13.52" x 7.23" x 44'-11"

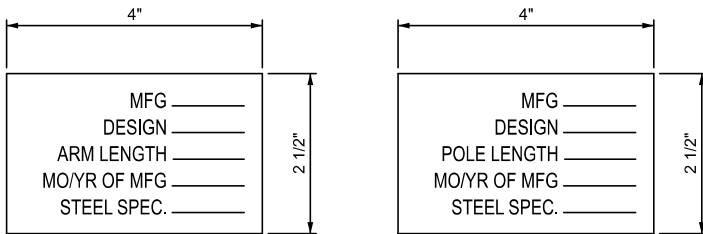
MAST ARM TUBE TAPER IS 0.140 IN/FT
 * DIAMETERS GIVEN ARE O.D.



1 **DETAIL - 16-SIDED SECTION**

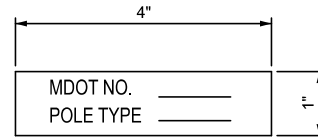
NOTES:

- THE DESIGN OF THIS STRUCTURE IS BASED ON CATEGORY III GALLOPING, NATURAL WIND GUSTS, AND TRUCK INDUCED FATIGUE LOADS.
- WELD THE LONGITUDINAL ARM SEAM ON THE INBOARD AND OUTBOARD SECTIONS OF THE TELESCOPIC FIELD SPLICE WITH A COMPLETE JOINT PENETRATION (CJP) WELD WITH A LENGTH EQUAL TO THE TELESCOPIC FIELD SPLICE LENGTH PLUS 6 INCHES. THE LAP OF THE ARM SECTIONS CANNOT EXTEND BEYOND THE LONGITUDINAL ARM SEAM CJP WELD WHEN THE FIELD SPLICE IS ERRECTED AND IN ITS FINAL POSITION. IN ADDITION, LONGITUDINAL SEAM WELDS MUST HAVE 60% MINIMUM PENETRATION OR FUSION AND MUST BE CJP FOR A MINIMUM OF 6 INCHES FROM TUBE TO PLATE CJP WELDS.
- SEAM WELDS IN MAST ARM POLE MUST BE 90° ± FROM HAND HOLE AT BASE. SEAM WELDS IN MAST ARM MUST BE LOCATED ON BOTTOM OF MAST ARMS.
- LUMINAIRE ARM IS 11 GAUGE ROUND STEEL WITH 0.140 INCH PER FOOT TAPER.
- BACKING BAR FOR PIPE TO BASE PLATE (R) AND MAST ARM TO MAST ARM PLATE MUST BE MINIMUM 5/16 INCH X 2 INCH PLATE.
- 1/2 INCH DIAMETER (Ø) ROUND STOCK C-HOOK ATTACHED TO ALL POLE SIZES. 1 INCH SCHEDULE (SCH.) 80 PIPE ATTACHED TO ALL POLE SIZES AND INBOARD AND OUTBOARD ARM.
- S.S. DENOTES STAINLESS STEEL. GA. DENOTES GAUGE. O.D. DENOTES OUTSIDE DIAMETER. I.D. DENOTES INSIDE DIAMETER. H.S. DENOTES HIGH STRENGTH.
- ROUND OR 16-SIDED SECTIONS ARE ALLOWED.
- MULTI-PLY SECTIONS ARE NOT ALLOWED.



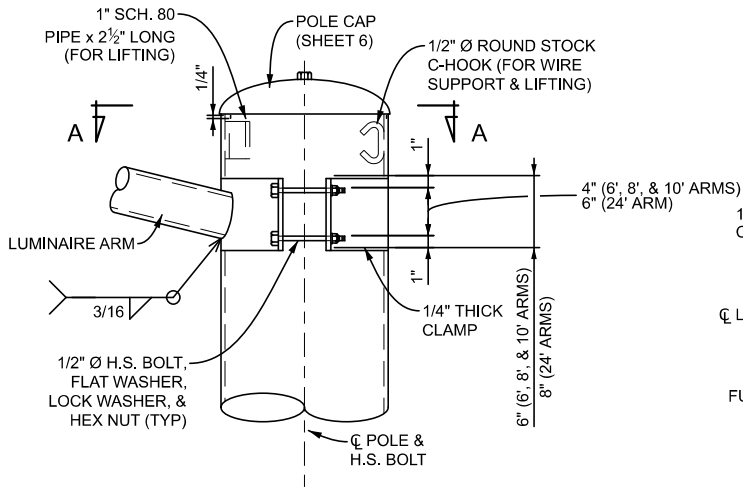
ATTACH TO POLE AND MAST ARM AT LOCATIONS SHOWN
 4" FROM BASE OF TUBE BELOW HANDHOLE WITH (4) #8 x 3/8"
 S.S. TYPE U DRIVE SCREWS.
 (LETTERS STAMPED IN 3/8" CHARACTERS)
 STEEL SPEC. REFERS TO THE ASTM SPECIFICATION AND GRADE: "AXXX GR YY"

2 **DETAIL - ARM/POLE S.S. ID TAG**



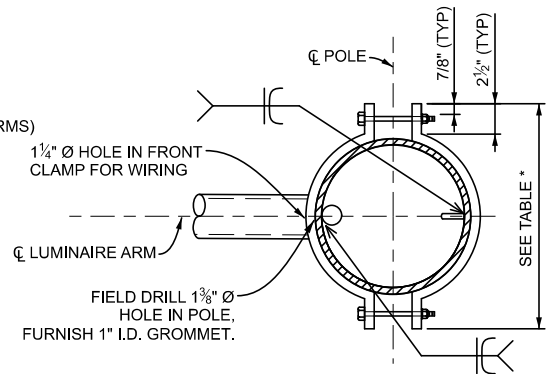
WELD TAG TO EDGE OF BASE PLATE
 (LETTERS STAMPED IN 3/8" CHARACTERS)

3 **DETAIL - BASE S.S. ID TAG**



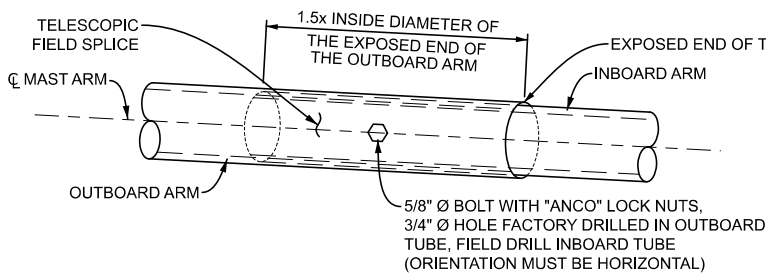
ORIENTATION OF SCH. 80 PIPE 180° FROM HAND HOLE AT BASE & C-HOOK 180° FROM SCH. 80 PIPE

4 DETAIL - LUMINAIRE ARM BRACKET



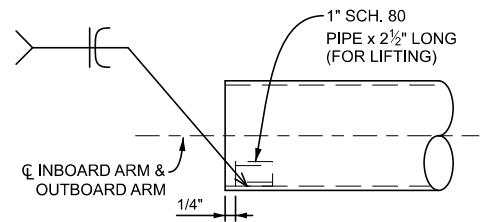
	CLAMP WIDTHS*	
	20'-50' ARMS	55'-60' ARMS
30' POLE	1'-2 1/8"	1'-4 3/8"
36' POLE	1'-2"	1'-3 1/2"
40' POLE	1'-1 1/2"	1'-3"

A SECTION - LUMINAIRE ARM BRACKET



NOTES:
 1. FOR 45'-0" ARMS AND GREATER.
 2. THE INBOARD AND OUTBOARD ARMS MUST FIT TIGHTLY.

5 DETAIL - TELESCOPIC SPLICE



6 INBOARD/OUTBOARD ARM DETAIL - LIFTING DEVICE



DEPARTMENT DIRECTOR
 BRADLEY C. WIEFERICH, PE

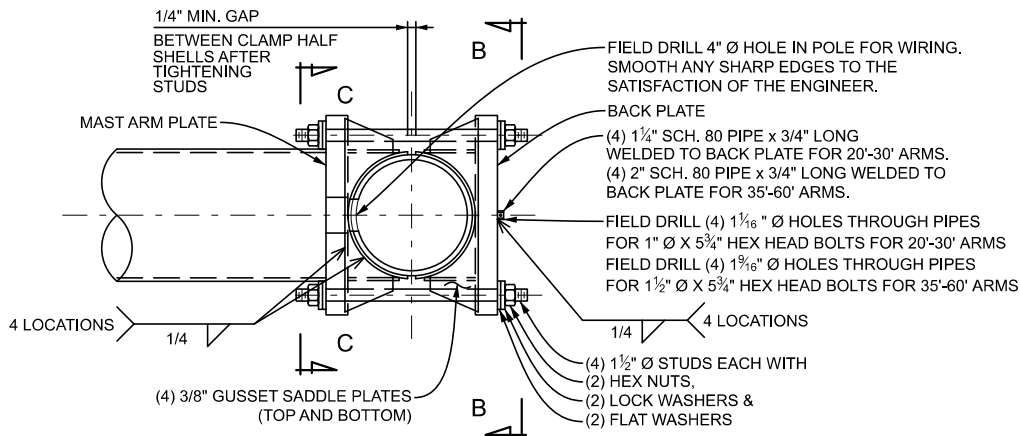
STANDARD PLAN FOR
 LUMINAIRE ARM BRACKET, TELESCOPIC
 SPLICE, AND LIFTING DEVICE DETAILS

(SPECIAL DETAIL)
 FHWA APPROVAL

05/17/24
 PLAN DATE

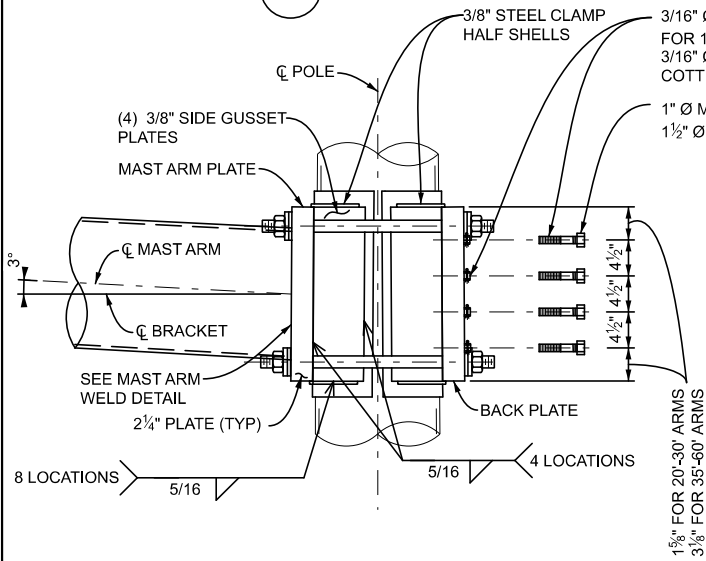
SIG-033-B

SHEET
 3 OF 6



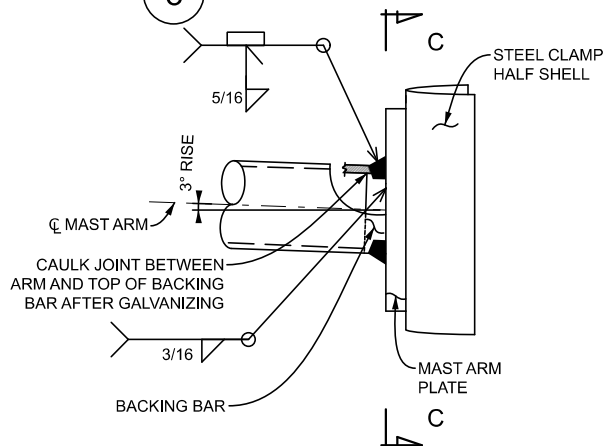
ROUND SECTION SHOWN, SAME CONNECTION DETAILS FOR 16-SIDED SECTION
GUSSET SADDLE PLATES MUST MATCH 16-SIDED POLE SHAPE

7 DETAIL - MAST ARM BRACKET PLAN



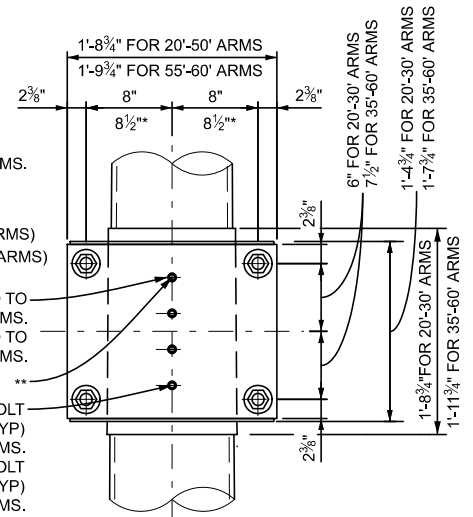
** FIELD DRILL (4) 1 1/16" Ø HOLES IN POLE FOR 1" Ø X 5 3/4" HEX HEAD BOLTS FOR 20'-30' ARMS.
FIELD DRILL (4) 1 3/16" Ø HOLES IN POLE FOR 1 1/2" Ø X 5 3/4" HEX HEAD BOLTS FOR 35'-60' ARMS.

8 DETAIL - MAST ARM BRACKET ELEVATION



GUSSET SADDLE PLATES AND SIDE GUSSET PLATES NOT SHOWN FOR CLARITY

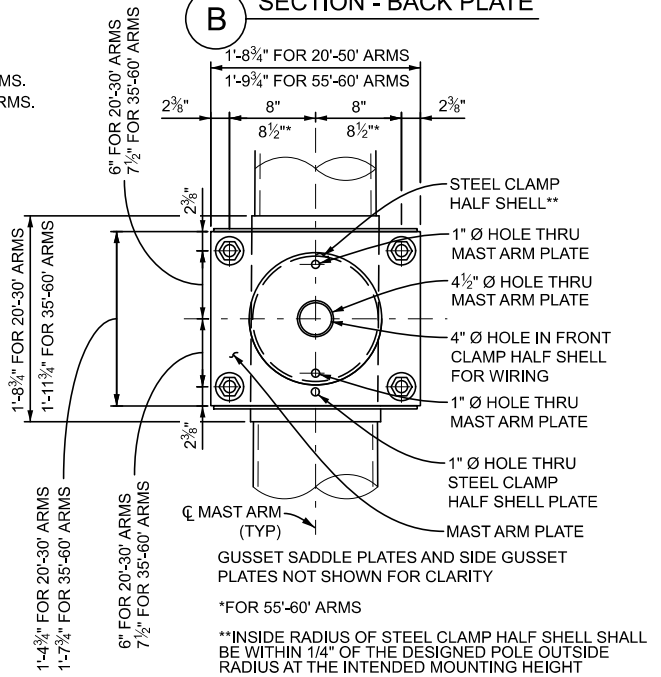
9 DETAIL - MAST ARM WELD



GUSSET SADDLE PLATES AND SIDE GUSSET PLATES NOT SHOWN FOR CLARITY

*FOR 55'-60' ARMS

B SECTION - BACK PLATE



*FOR 55'-60' ARMS

**INSIDE RADIUS OF STEEL CLAMP HALF SHELL SHALL BE WITHIN 1/4" OF THE DESIGNED POLE OUTSIDE RADIUS AT THE INTENDED MOUNTING HEIGHT

C SECTION - MAST ARM PLATE



DEPARTMENT DIRECTOR
BRADLEY C. WIEFERICH, PE

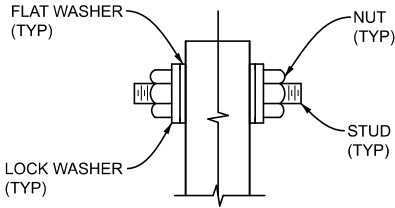
STANDARD PLAN FOR
MAST ARM BRACKET DETAILS

(SPECIAL DETAIL)
FHWA APPROVAL

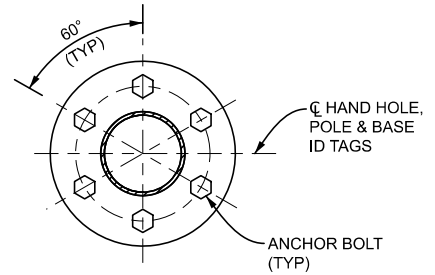
05/17/24
PLAN DATE

SIG-033-B

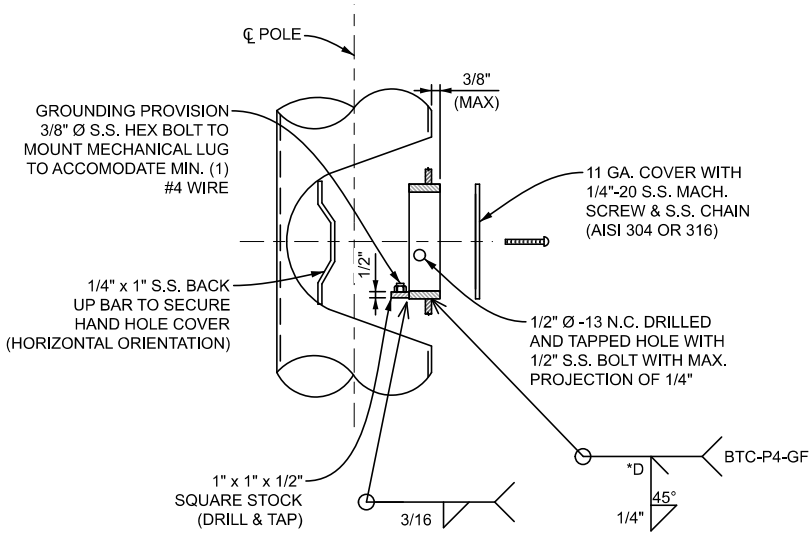
SHEET
4 OF 6



10 DETAIL - MAST ARM BRACKET WASHERS

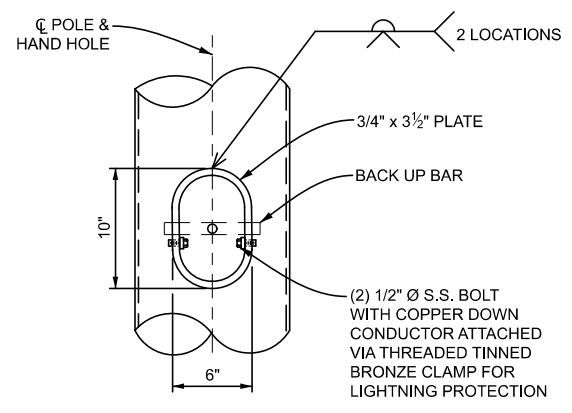


11 DETAIL - ORIENTATION OF HAND HOLE

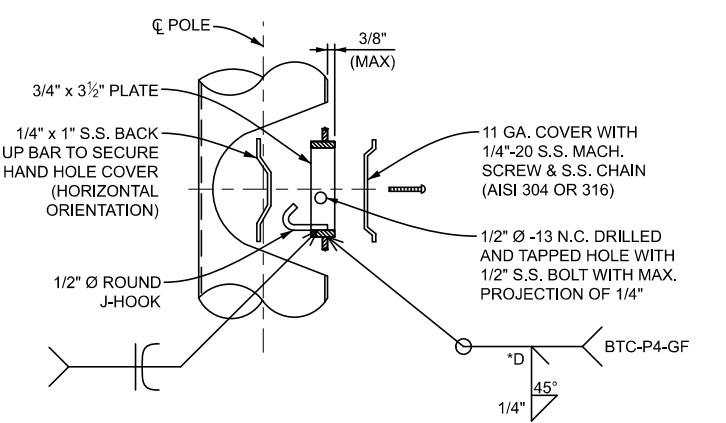


*GROOVE DEPTH (D) EQUALS WELD SIZE (S) EQUALS POLE WALL THICKNESS MINUS 1/8 INCH FLAT (1G) OR HORIZONTAL (2G) POSITION

12 DETAIL - 6" X 10" BAR BOTTOM HAND HOLE

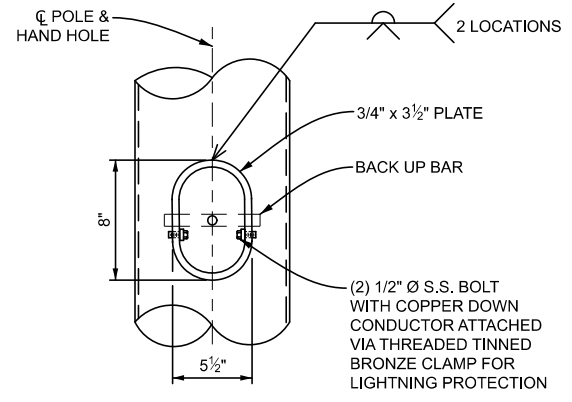


13 DETAIL - 6" X 10" BAR BOTTOM HAND HOLE
VIEW ROTATED 90 DEGREES

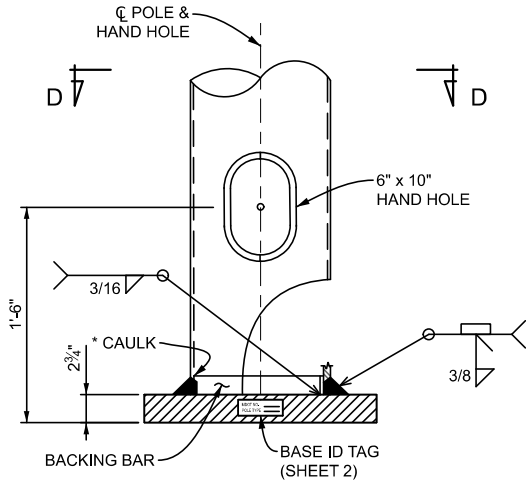


*GROOVE DEPTH (D) EQUALS WELD SIZE (S) EQUALS POLE WALL THICKNESS MINUS 1/8 INCH FLAT (1G) OR HORIZONTAL (2G) POSITION

14 DETAIL - 5 1/2" X 8" BAR TOP HAND HOLE

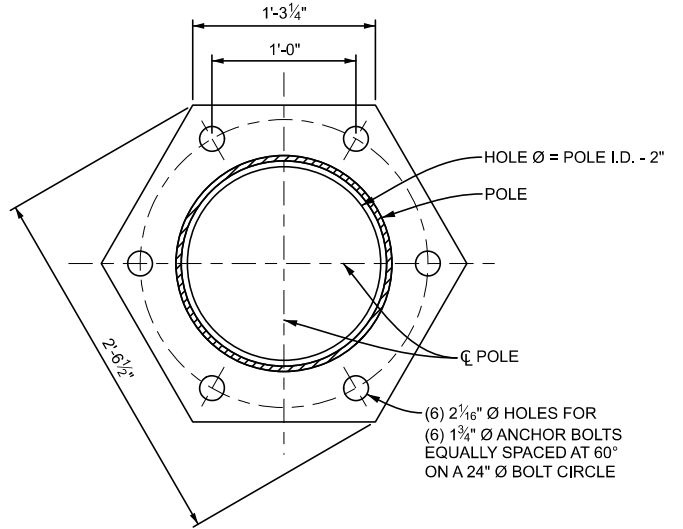


15 DETAIL - 5 1/2" X 8" BAR TOP HAND HOLE
VIEW ROTATED 90 DEGREES

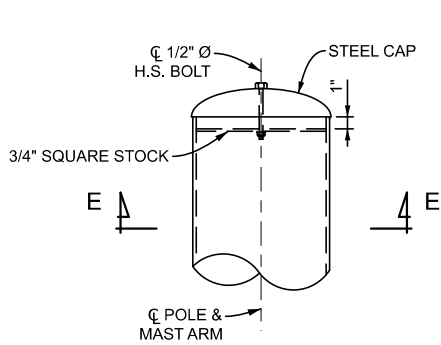


*SEAL JOINT WITH CAULK AFTER GALVANIZING

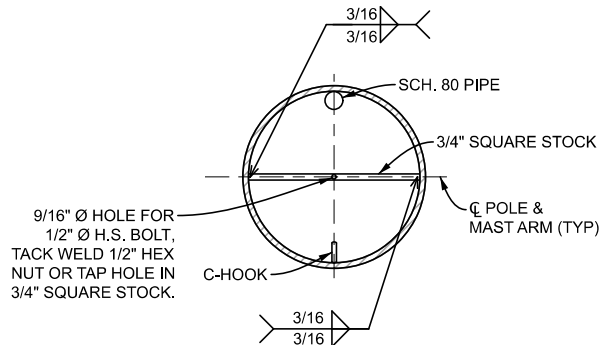
16 DETAIL - BASE PLATE WELD
VIEW ROTATED 90 DEGREES



D SECTION - BASE PLATE



17 DETAIL - POLE AND MAST ARM CAP



E SECTION - POLE AND MAST ARM CAP



DEPARTMENT DIRECTOR
BRADLEY C. WIEFERICH, PE

STANDARD PLAN FOR
BASE PLATE, MAST ARM POLE CAP, AND
MAST ARM CAP DETAILS

(SPECIAL DETAIL)
FHWA APPROVAL

05/17/24
PLAN DATE

SIG-033-B

SHEET
6 OF 6