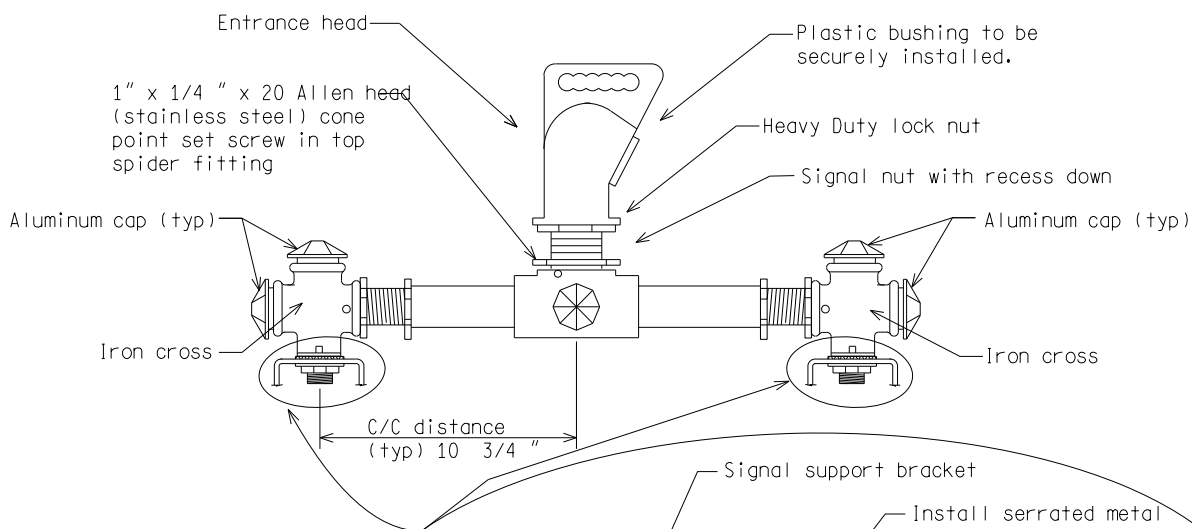


NOTE:
* Cotter key required as shown

ONE-WAY TRAFFIC SIGNAL HEAD



NOTE:
2-way T.S. shown
3-way T.S. & 4-way similar

MULTIPLE-WAY TRAFFIC SIGNAL HEAD(S)

NOT TO SCALE

File: PW:RD/TR/Signals/WC SD/Final

Rev. 10/21/14



PREPARED BY
TRAFFIC AND SAFETY

DRAWN BY: DJF

CHECKED BY:

ENGINEER OF DELIVERY

ENGINEER OF DEVELOPMENT

(SPECIAL DETAIL)

FHWA APPROVAL DATE

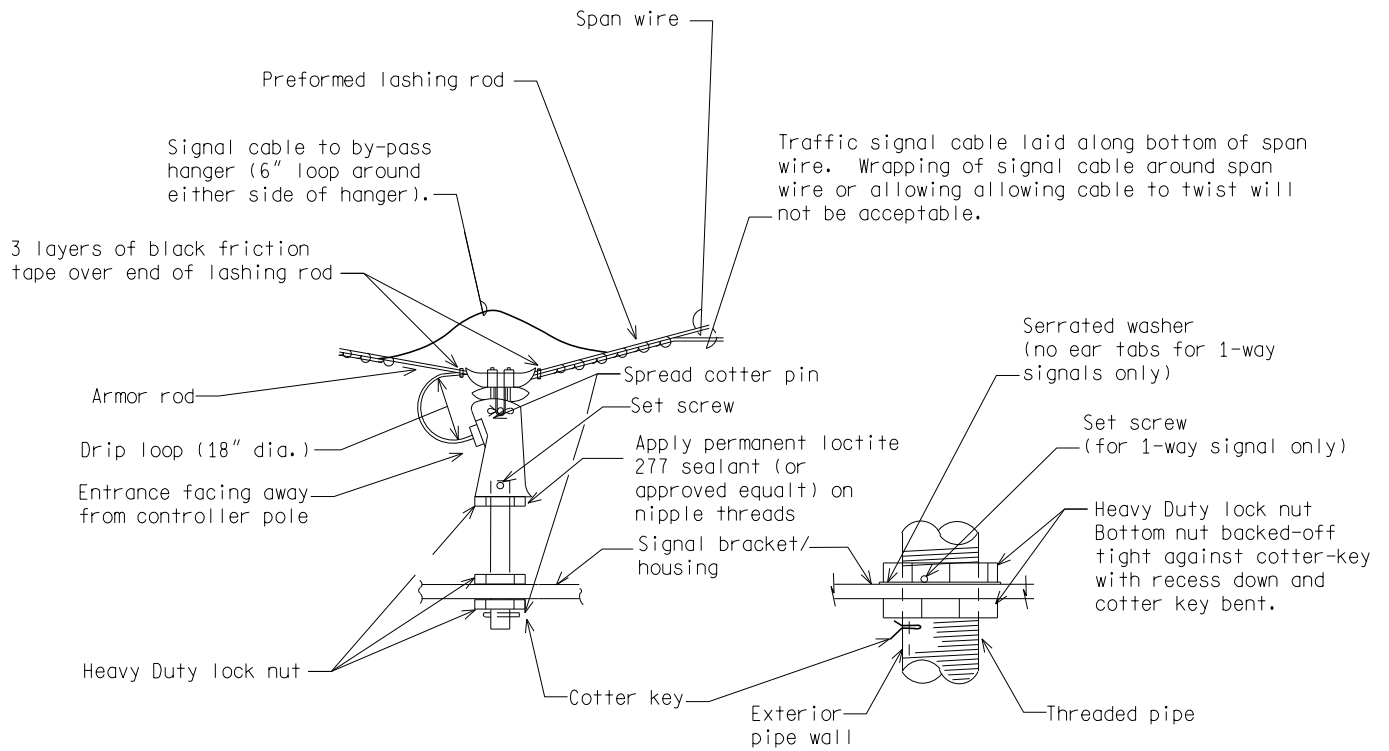
MICHIGAN DEPARTMENT OF TRANSPORTATION
BUREAU OF HIGHWAYS DELIVERY STANDARD PLAN FOR

SPAN WIRE MOUNTED
T.S. BRACKET ASSEMBLY

PLAN DATE

WC-030-A

SHEET
1 of 2



HANGER ATTACHMENT

NOTE:
 Exterior surface of all mounting assemble located below span clamps, including stems, lock nuts, and related hardware must match the current FHWA Highway yellow color tolerance chart per the Standard Specifications for Construction.

NOT TO SCALE

MICHIGAN DEPARTMENT OF TRANSPORTATION
 BUREAU OF HIGHWAYS DELIVERY STANDARD PLAN

(SPECIAL DETAIL)
 FHWA APPROVAL DATE

PLAN DATE

WC-030-A

SHEET
 2 of 2