

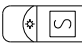
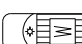


KEY

-  LIGHTED ARROW PANEL
-  TRAFFIC FLOW
-  SHADOW VEHICLE WITH OPTIONAL TRUCK MOUNTED ATTENUATOR
-  WORK VEHICLE WITH OPTIONAL TRUCK MOUNTED ATTENUATOR

STANDARD NOTES

(SEE 102-GEN-NOTES)

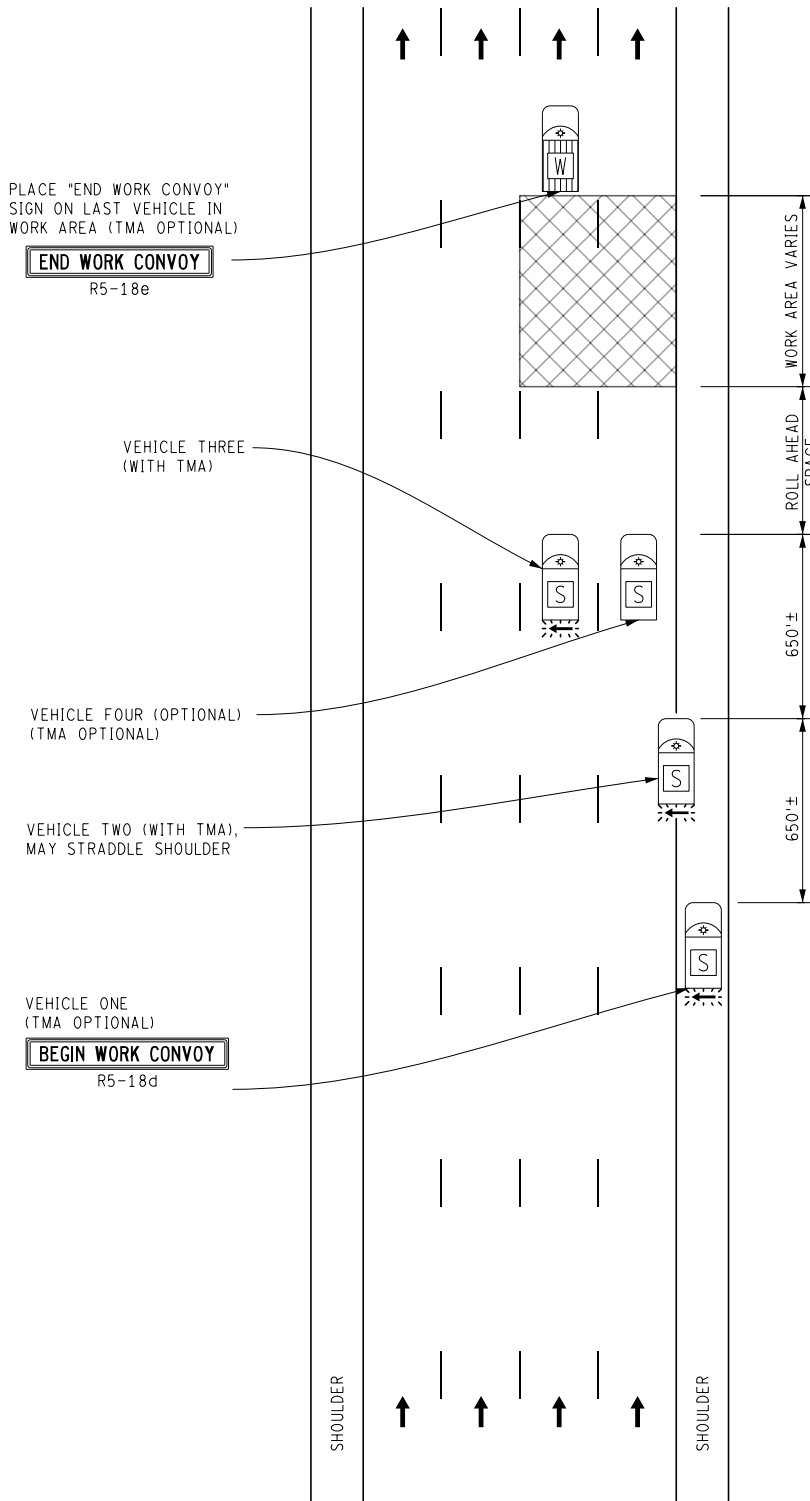
GENERAL: G1, G2, G3, G4

SIGNING: S1

MAINT & SURV: MS1, MS2, MS3, MS4, MS5

NOTES

1. THIS TYPICAL ALSO MAY BE USED WHEN WORK IS BEING PERFORMED IN THE LANE ADJACENT TO THE MEDIAN OF THE ROADWAY. IN THIS CASE, THE "LEFT TWO LANES CLOSED AHEAD" SIGNS SHALL BE SUBSTITUTED.



NOT TO SCALE

	MAINTENANCE MAINTAINING TRAFFIC TYPICAL	DURATION: SHORT-DURATION MOBILE	MOBILE OPERATION ON A MULTI-LANE ROADWAY - 2 LANES	DATE: MAY 2021
				NO: 4422-M-FW-2LC
FILE: 4422-M-FW-2LC.dgn				SHEET: 1 OF 1