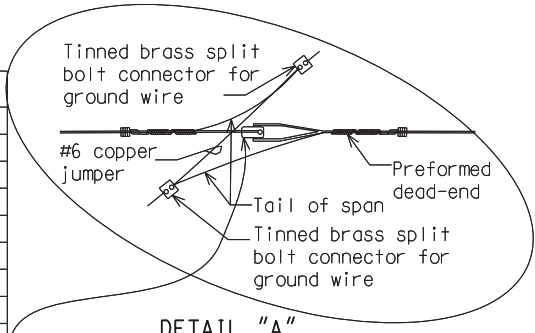


NO.	ITEM
1	Traffic signal (no. heads as indicated)
2	Span wire hanger
3	5/16" extra high strength span wire
4	3" Service cap (weatherhead), (metal for steel and PVC for wood poles)
5	P.J. traffic signal cable (as specified)
6	Preformed lashing rods
7	Pole band clamp (steel pole)
8	Guy thimble (2" dia.)
9	(2) 5/8" x 4" long bolt, nut, washers per pole band clamp (steel pole)
10	Install span wire preformed (armor rod) under each span hanger
11	Access hand hole all new & existing steel poles
12	5/8" eyebolt, oval eye and nut
13	Wood moulding or plastic duct (10' from ground level)
14	3" schedule 80 PVC or rigid metal (*) See note on sheet 2 of 5
15	Preformed guy grip dead ends

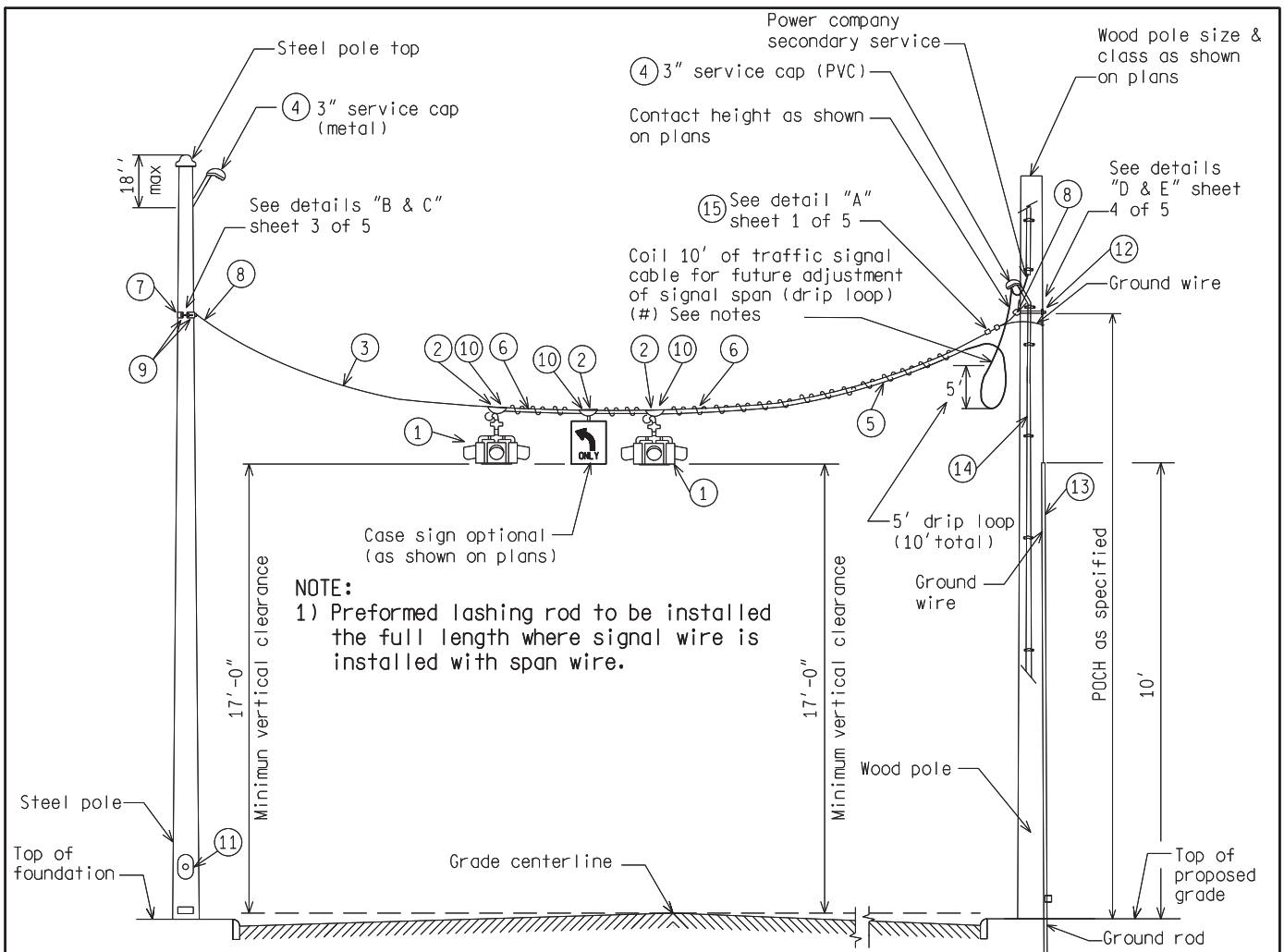


DETAIL "A"
COPPER JUMPER
NOTE: Porcelain strain insulator (if required shall meet the codes and placement requirements of the local utility co.)

NOT TO SCALE

File: RefDoc/TR/Signals/Web/Sp Det/Fin/SIG010A.dgn Rev: 02/16/17

<p>PREPARED BY TRAFFIC AND SAFETY</p>	<p>ENGINEER OF DELIVERY</p>	<p>MICHIGAN DEPARTMENT OF TRANSPORTATION BUREAU OF HIGHWAYS DELIVERY STANDARD PLAN FOR ALL SPAN WIRE T.S. ON STEEL AND WOOD POLES</p>	<p>SHEET 1 of 7</p>
	<p>ENGINEER OF DEVELOPMENT</p>		
<p>DRAWN BY: DJF</p>	<p>(SPECIAL DETAIL)</p>	<p>PLAN DATE</p>	
<p>CHECKED BY:</p>	<p>FHWA APPROVAL DATE</p>		



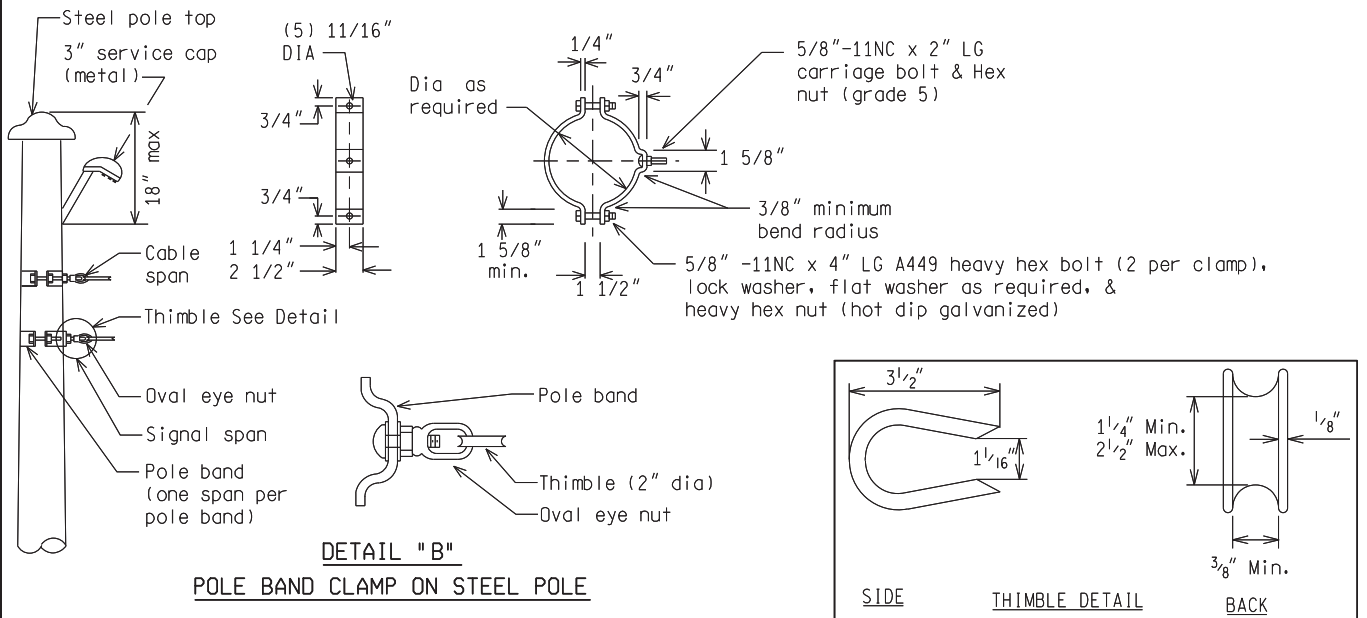
TYPICAL FLASHING BEACON INSTALLATION ON STEEL AND WOOD POLES

NO.	ITEM
1	Traffic signal (no. heads as indicated)
2	Span wire hanger
3	5/16" extra high strength span wire
4	3" service cap (weatherhead), (metal for steel and PVC for wood poles)
5	P.J. traffic signal cable (as specified)
6	Preformed lashing rods
7	Pole band clamp (steel pole)
8	Guy thimble (2" dia.)
9	(2) 5/8" x 4" long bolt, nut, washers per pole band clamp (steel pole)
10	Install span wire preformed (armor rod) under each span hanger
11	Access hand hole all new & existing steel poles
12	5/8" eyebolt, oval eye and nut
13	Wood moulding or plastic duct (10' from ground level)
14	1 1/2" to 2" schedule 80 PVC or rigid metal (*) See note
15	Preformed guy grip dead ends

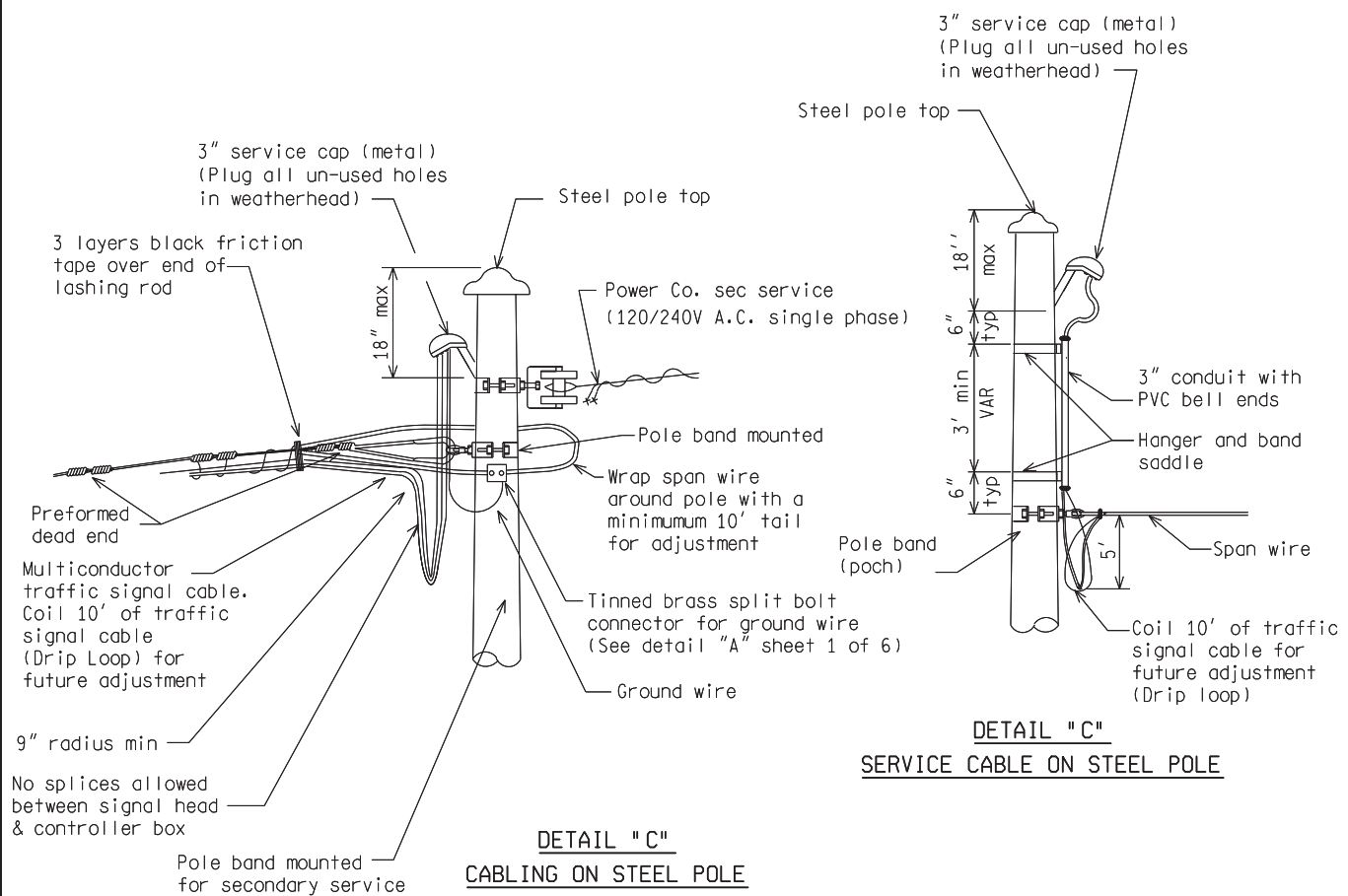
NOTES:
 (*) For projects maintained by the Wayne Co. Department of Public Services (WCDPS), use rigid metal for conduit(s) from grade level to 10' (min.) above grade or as directed by the Engineer.

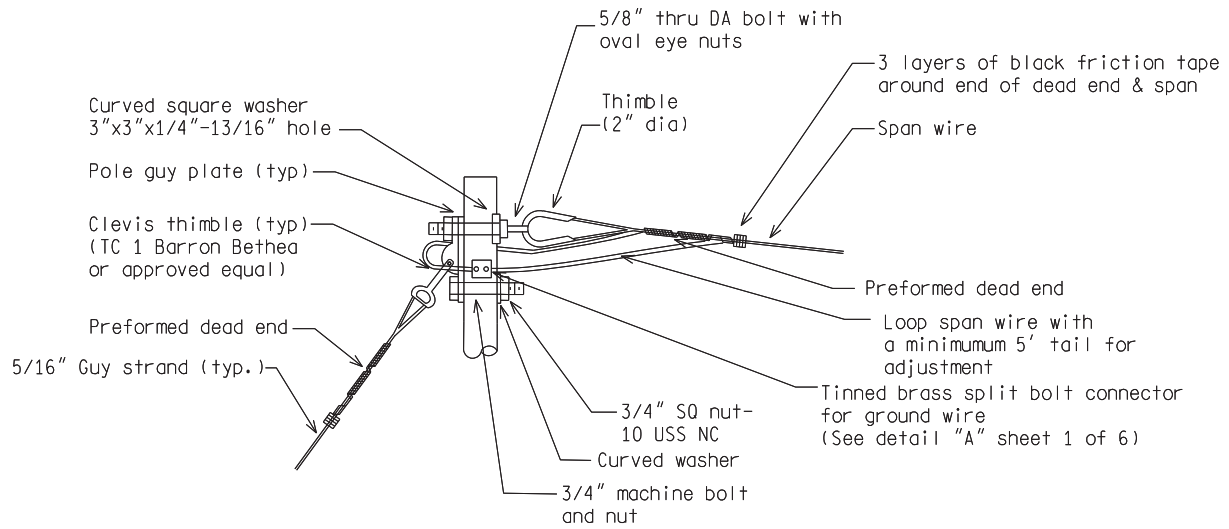
(#) For projects maintained by the Road Commission for Oakland County (RCOC), use drip loop (without coil) for future adjustment of signal span.

NOT TO SCALE

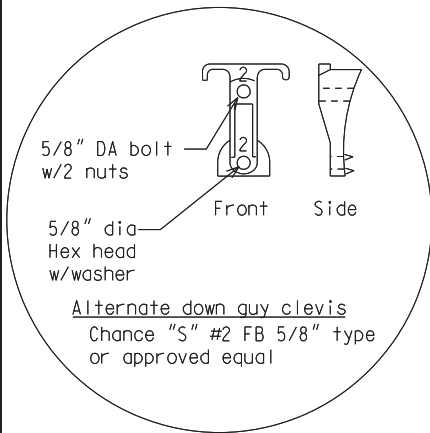


ASTM A36 steel pole band clamps must be stamped with identification that is traceable back to the manufacturer, which can be used to determine the month and year of clamp manufacture. The stamping method must be a low stress stamping method. The stamp cannot be located near the bolted flange, must be located near the center of the clamp on the back side facing away from traffic, and be visible after galvanizing. All bend radii are to be a minimum of 1.5 times the pole band thickness.

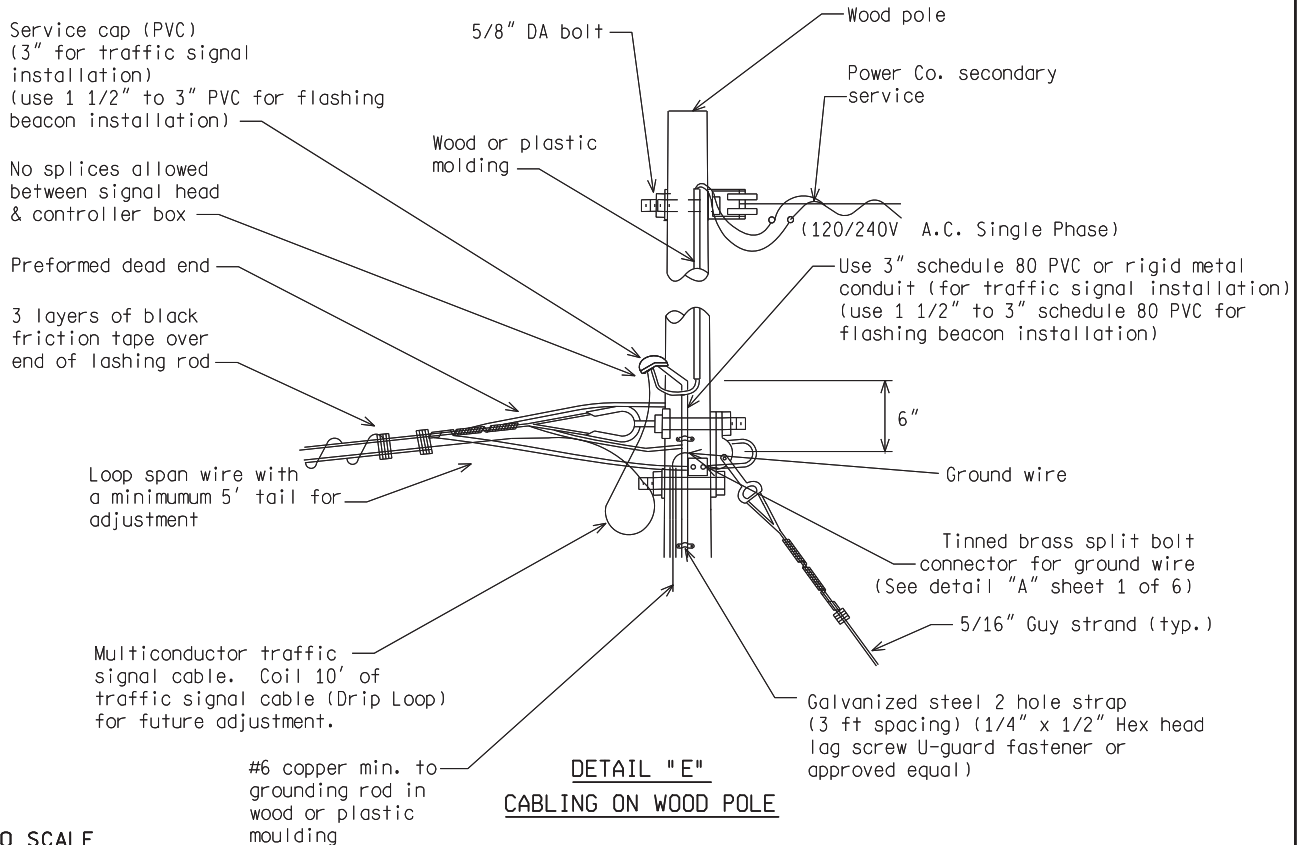




DETAIL "D"
SPAN WIRE POLE PLATE AND HARDWARE ON WOOD POLE



NOTE:
 Porcelain strain insulator (if required) shall meet the codes and placement requirements of the local utility co.



DETAIL "E"
CABLING ON WOOD POLE

NOT TO SCALE

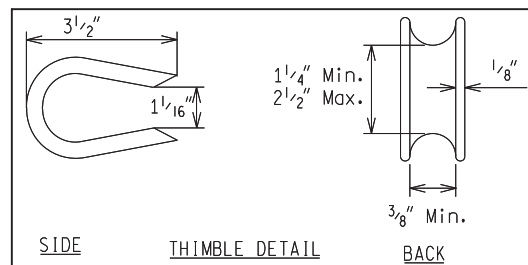
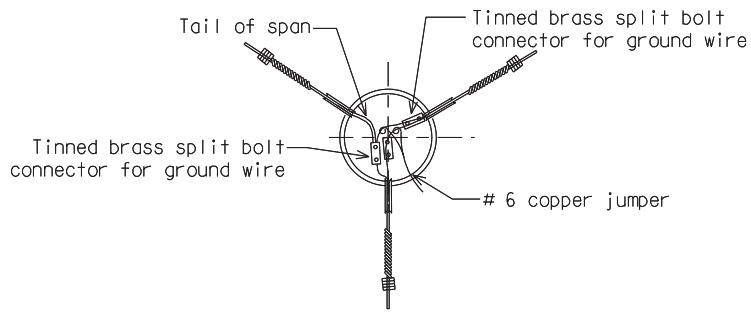
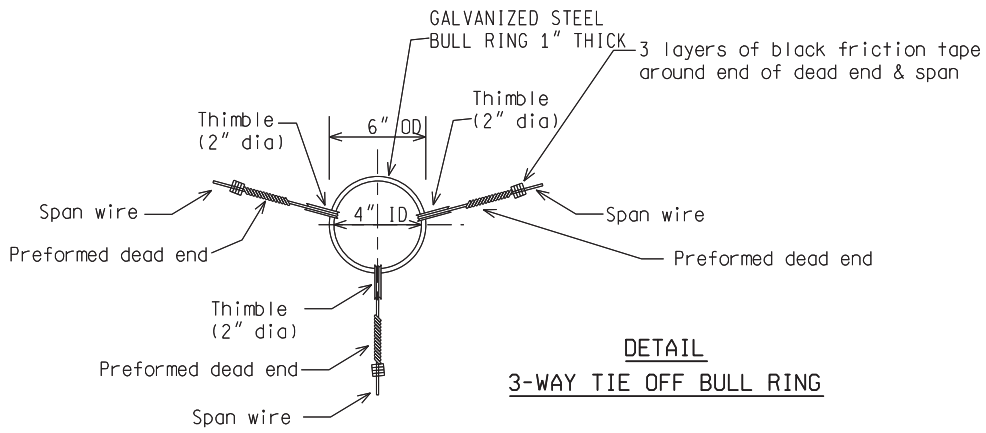
MICHIGAN DEPARTMENT OF TRANSPORTATION
 BUREAU OF HIGHWAYS DELIVERY STANDARD PLAN

(SPECIAL DETAIL)
 FHWA APPROVAL DATE

PLAN DATE

SIG-010-A

SHEET
 4 of 7



NOT TO SCALE

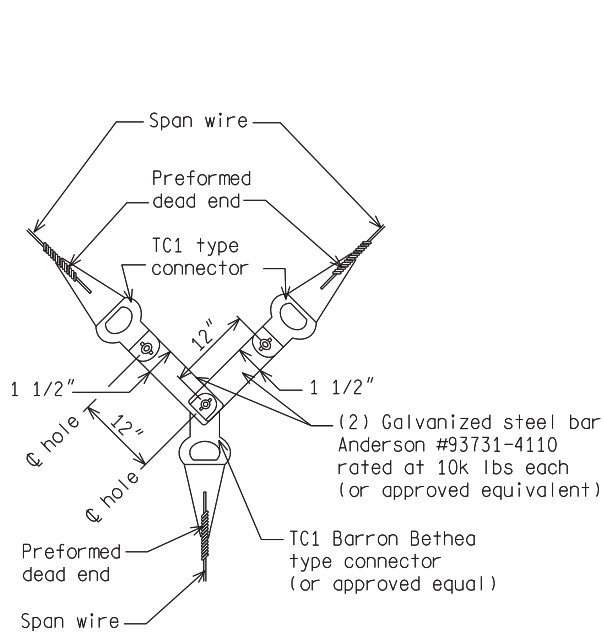
MICHIGAN DEPARTMENT OF TRANSPORTATION
BUREAU OF HIGHWAYS DELIVERY STANDARD PLAN

(SPECIAL DETAIL)
FHWA APPROVAL DATE

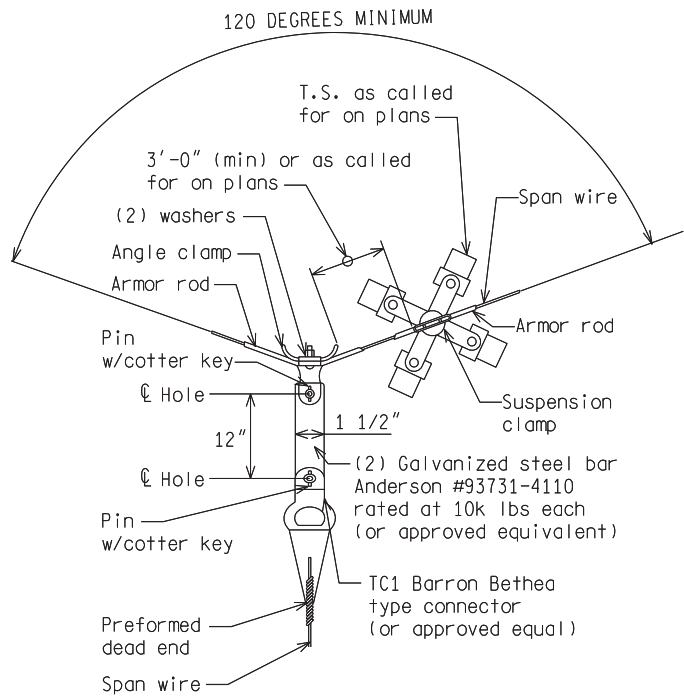
PLAN DATE

SIG-010-A

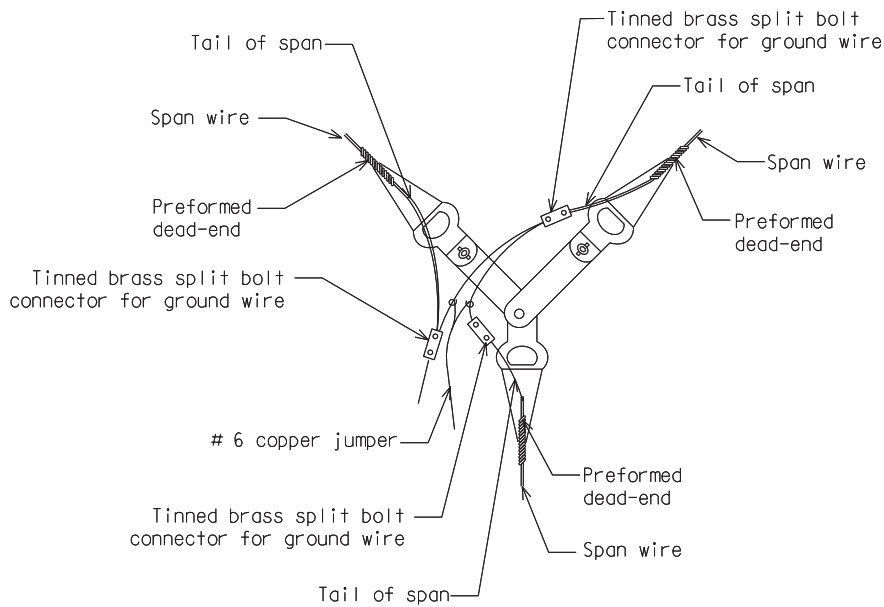
SHEET
5 of 7



PULL-OFF CONNECTION DETAIL (ALTERNATE)
FOR 3-WAY SUSPENSION



PULL-OFF CONNECTION DETAIL (ALTERNATE)
FOR 3-WAY SUSPENSION



DETAIL COPPER JUMPER (ALTERNATE)
SPAN WIRE GROUNDING

NOT TO SCALE

MICHIGAN DEPARTMENT OF TRANSPORTATION
BUREAU OF HIGHWAYS DELIVERY STANDARD PLAN

(SPECIAL DETAIL)
FHWA APPROVAL DATE

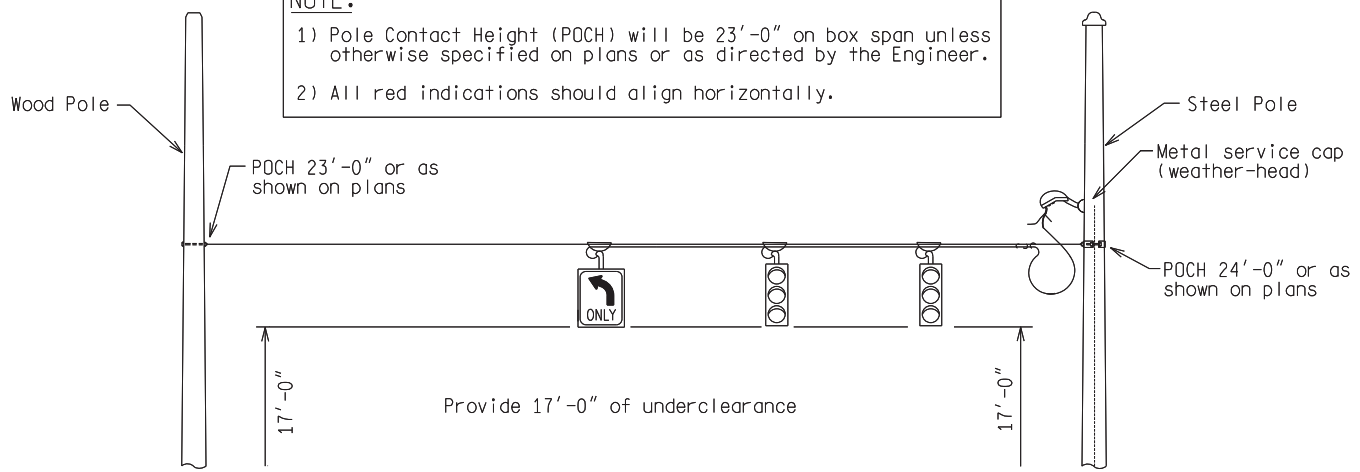
File: RefDoc/TR/Signals/Web/Sp Det/Fin/SIG010A.dgn Rev. 02/16/17

PLAN DATE

SIG-010-A

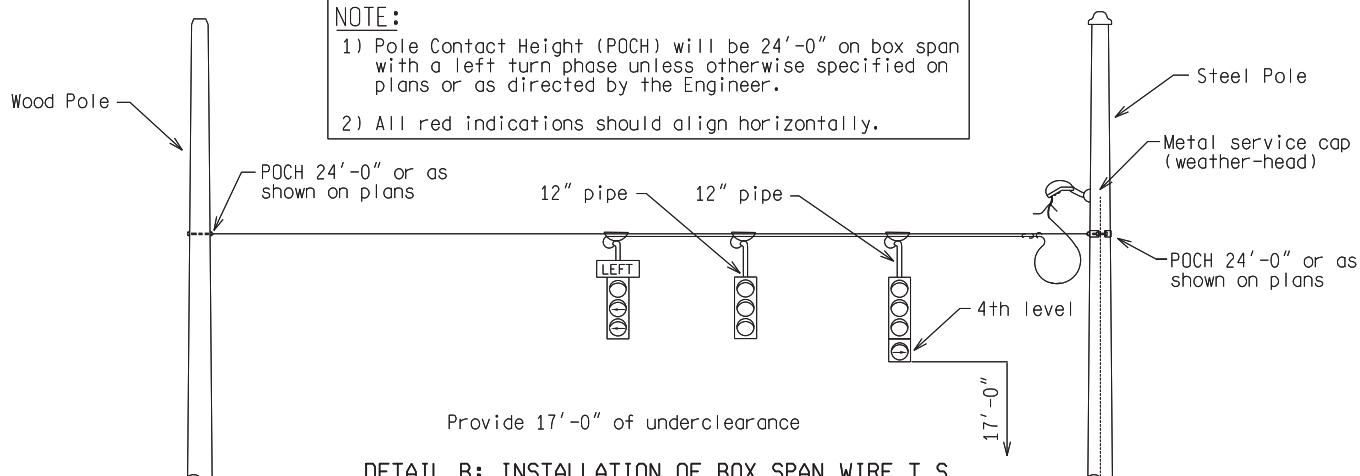
SHEET
6 of 7

NOTE:
 1) Pole Contact Height (POCH) will be 23'-0" on box span unless otherwise specified on plans or as directed by the Engineer.
 2) All red indications should align horizontally.



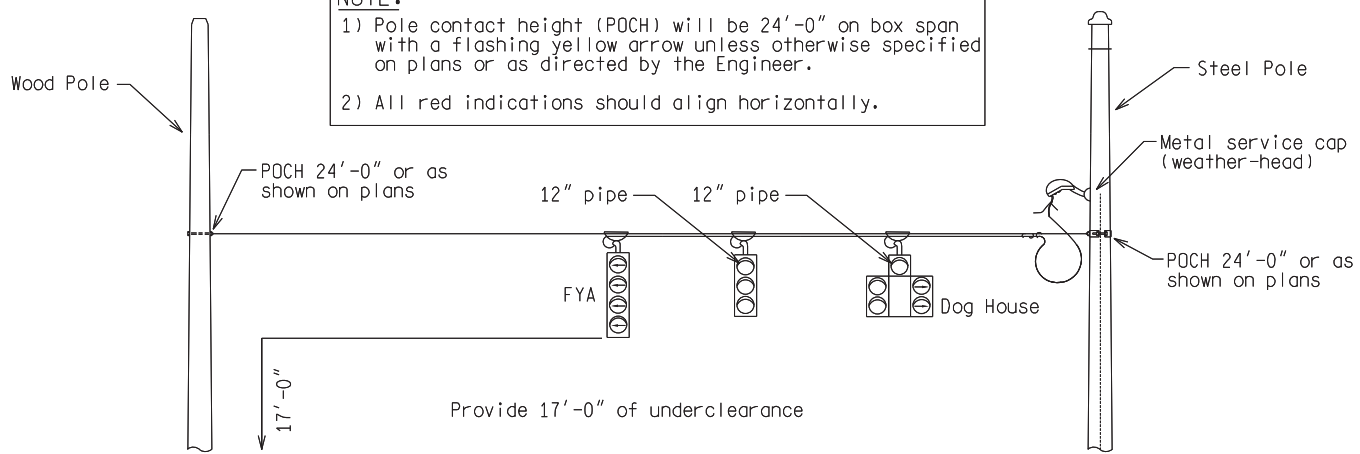
DETAIL A: INSTALLATION OF BOX SPAN WIRE T.S. ON STEEL OR WOOD POLES

NOTE:
 1) Pole Contact Height (POCH) will be 24'-0" on box span with a left turn phase unless otherwise specified on plans or as directed by the Engineer.
 2) All red indications should align horizontally.



DETAIL B: INSTALLATION OF BOX SPAN WIRE T.S. W/LT PHASE OR 4TH LEVEL ON STEEL OR WOOD POLES

NOTE:
 1) Pole contact height (POCH) will be 24'-0" on box span with a flashing yellow arrow unless otherwise specified on plans or as directed by the Engineer.
 2) All red indications should align horizontally.



DETAIL C: INSTALLATION OF BOX SPAN WIRE T.S. FYA AND DOGHOUSE ON STEEL OR WOOD POLES

BOX SPAN WIRE T.S. ON STEEL OR WOOD POLES

For use on Oakland County roads only.

NOT TO SCALE

MICHIGAN DEPARTMENT OF TRANSPORTATION BUREAU OF HIGHWAYS DELIVERY STANDARD PLAN	(SPECIAL DETAIL) FHWA APPROVAL DATE	PLAN DATE	SIG-010-A	SHEET 7 of 7
File: RefDoc/TR/Signals/Web/Sp Det/Fin/SIG010A.dgn Rev. 02/16/17				