

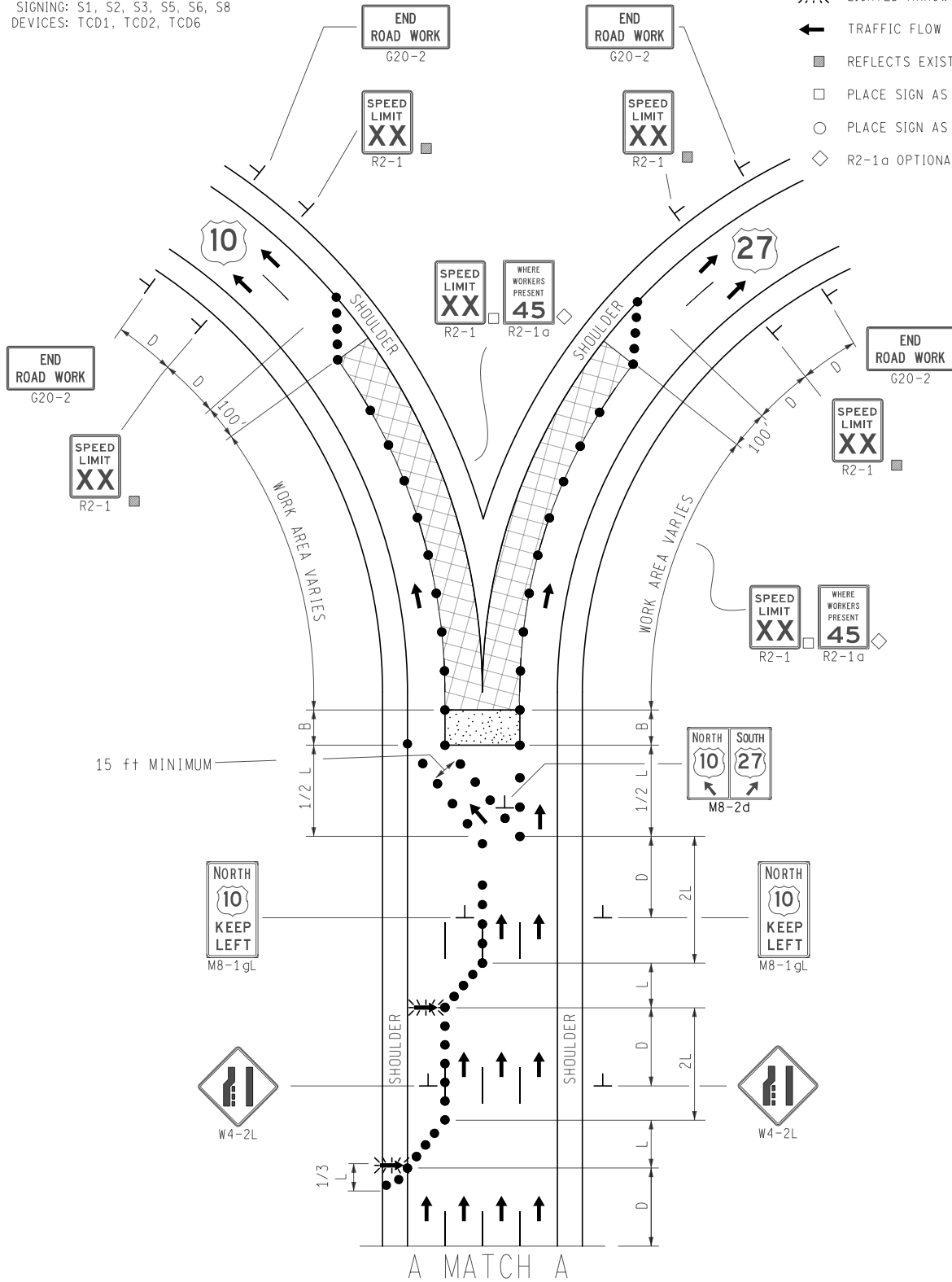
**STANDARD NOTES**

(SEE 102-GEN-NOTES)

GENERAL: G1, G2, G3, G4, G5  
 SIGNING: S1, S2, S3, S5, S6, S8  
 DEVICES: TCD1, TCD2, TCD6

**KEY**

- CHANNELIZING DEVICES
- ⚡ LIGHTED ARROW PANEL
- ← TRAFFIC FLOW
- REFLECTS EXISTING SPEED LIMIT
- PLACE SIGN AS INDICATED IN NOTE S5
- PLACE SIGN AS INDICATED IN NOTE S2
- ◇ R2-1a OPTIONAL



NOT TO SCALE

MAINTAINING TRAFFIC TYPICAL

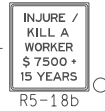
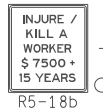
NO: 352-  
 SP-GORE(4)-2LC-(L)

**2-LANE CLOSURE  
 IN ADVANCE OF GORE WITH SHIFT  
 ON A 4-LANE FREEWAY**

DATE:  
 NOVEMBER 2021  
 SHEET:



A MATCH A



SHOULDER

SHOULDER

D  
D  
D  
2D  
2D  
2D