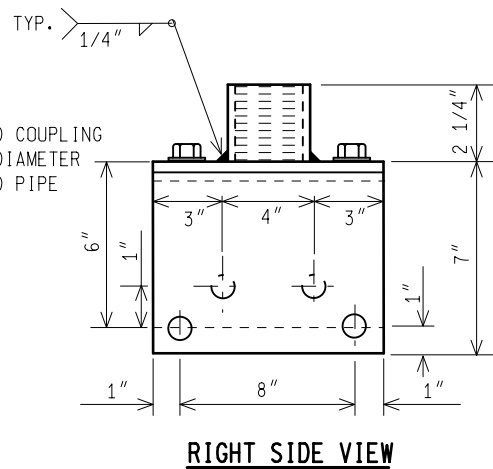
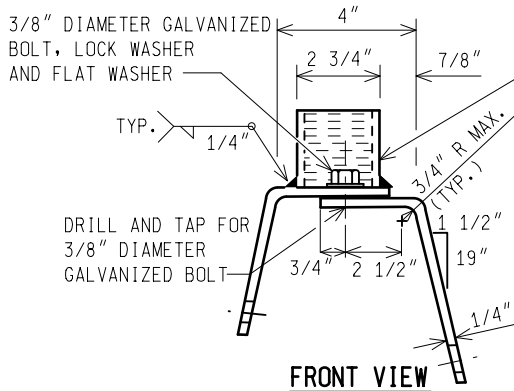
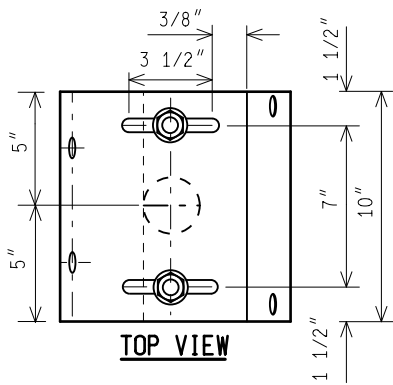


CONCRETE GLARE SCREEN CONNECTION

(BACK TO BACK)



BENT PLATE DETAILS



PREPARED BY
DESIGN DIVISION

DRAWN BY: DHD

CHECKED BY: AJU

DEPARTMENT DIRECTOR
Kirk T. Steudle

APPROVED BY: Randy V. Penttila
DIRECTOR, BUREAU OF FIELD SERVICES

APPROVED BY: Mark A. Van Paul
DIRECTOR, BUREAU OF HIGHWAY DEVELOPMENT

MICHIGAN DEPARTMENT OF TRANSPORTATION
BUREAU OF HIGHWAY DEVELOPMENT STANDARD PLAN FOR

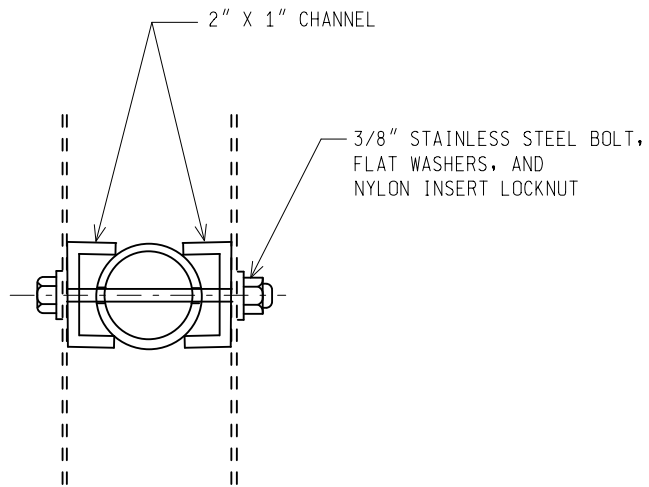
CONCRETE GLARE SCREEN CONNECTION

08/08/11
F.H.W.A. APPROVAL

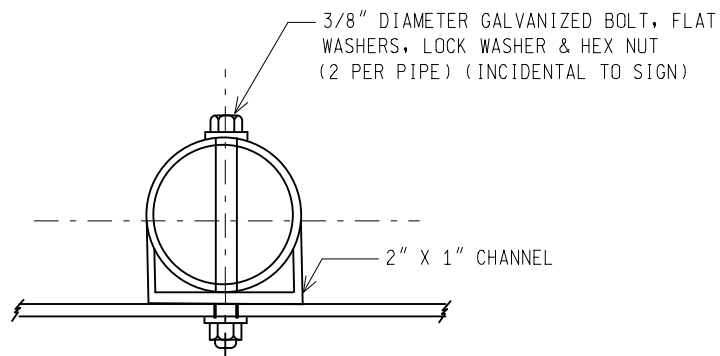
07/20/11
PLAN DATE

SIGN-730-B

SHEET
1 OF 2



TYPICAL SIGN CONNECTION DETAIL
(BACK TO BACK)



TYPICAL SIGN CONNECTION DETAIL

NOTES:

1. ENTIRE SECTION (PIPE & PLATE) TO BE HOT DIP GALVANIZED PER MDOT CURRENT STANDARD SPECIFICATIONS FOR CONSTRUCTION AFTER FABRICATION.
2. ALL CHANNELS, BOLTS, NUTS AND WASHERS TO BE GALVANIZED.
3. STEEL PIPE, PLATE AND CHANNEL MATERIAL PER MDOT CURRENT STANDARD SPECIFICATIONS FOR CONSTRUCTION.
4. SUPPORT SUITABLE FOR A SINGLE SIGN CONNECTION WITH A MAXIMUM OF 4 SQ. FT. & BACK TO BACK SIGN CONNECTION WITH A MAXIMUM OF 8 SQ. FT.

NOT TO SCALE

MICHIGAN DEPARTMENT OF TRANSPORTATION
BUREAU OF HIGHWAY DEVELOPMENT STANDARD PLAN

08/08/11
F.H.W.A. APPROVAL

07/20/11
PLAN DATE

SIGN-730-B

SHEET
2 OF 2