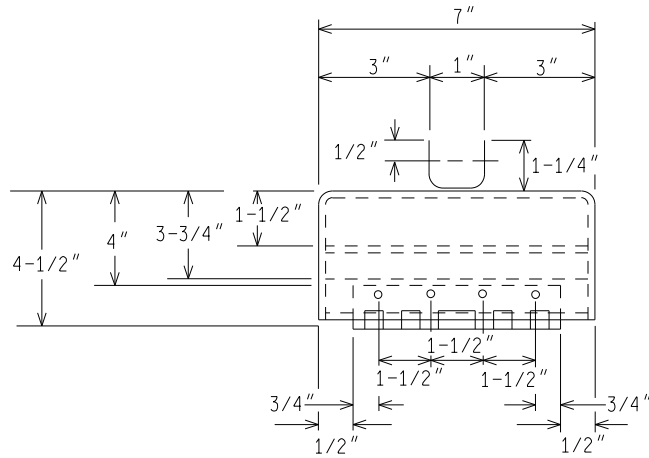
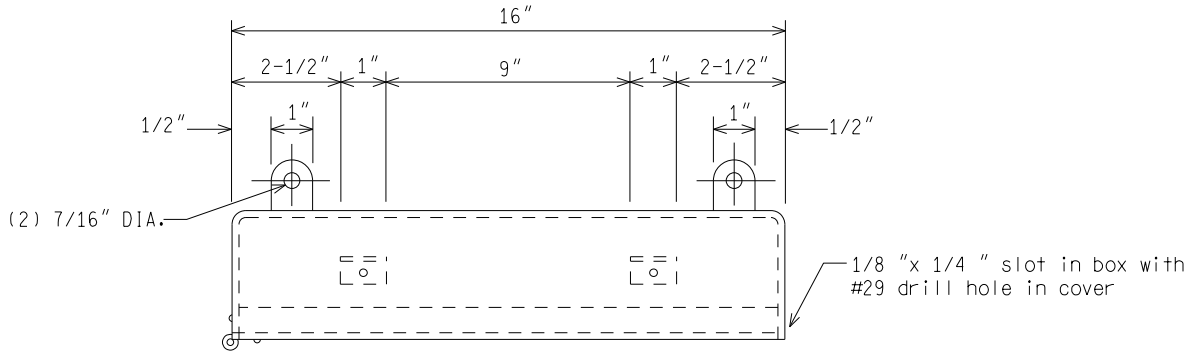
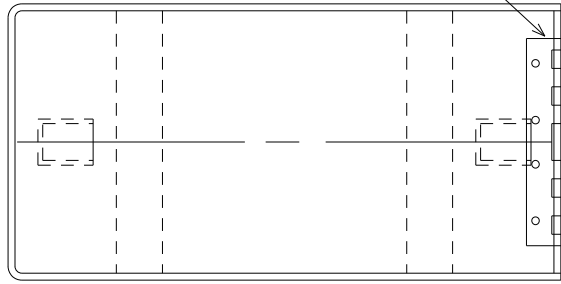


6" strap hinge w/8-1/8" aluminum rivets



NOTES:

- 1) Box to be of weather tight construction.
- 2) Bushing for cable entrance to be liquid tight, sized per cable used.
- 3) Terminal Block to be cinch 17-142, 17 position or approved equal.
- 4) Mounting brackets to be same material as box.
- 5) All material to be 13 gauge sheet aluminum.

ALUMINUM SPAN WIRE JUNCTION BOX

NOT TO SCALE

File:PW:RD/TR/Signals/WC SD/Final

Rev. 12/16/14



PREPARED BY
TRAFFIC AND SAFETY

ENGINEER OF DELIVERY

ENGINEER OF DEVELOPMENT

MICHIGAN DEPARTMENT OF TRANSPORTATION
BUREAU OF HIGHWAYS DELIVERY STANDARD PLAN FOR

**SPAN WIRE
JUNCTION BOX**

DRAWN BY:DJF

(SPECIAL DETAIL)
FHWA APPROVAL DATE

PLAN DATE

WC-408-A

SHEET
1 of 1